



Trans Adriatic
Pipeline

TAP AG Project Title / Facility Name:

Trans Adriatic Pipeline Project

Document Title:

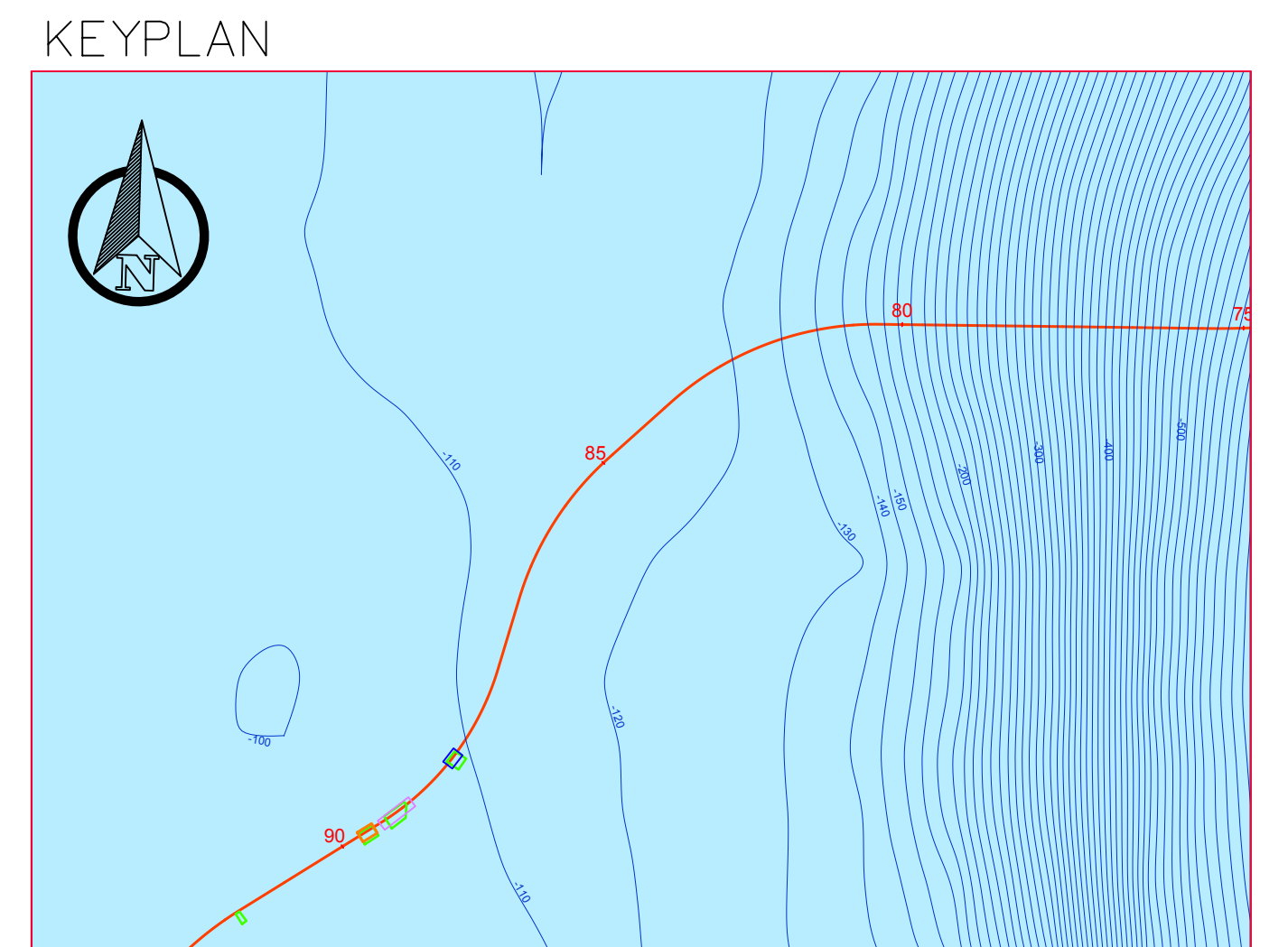
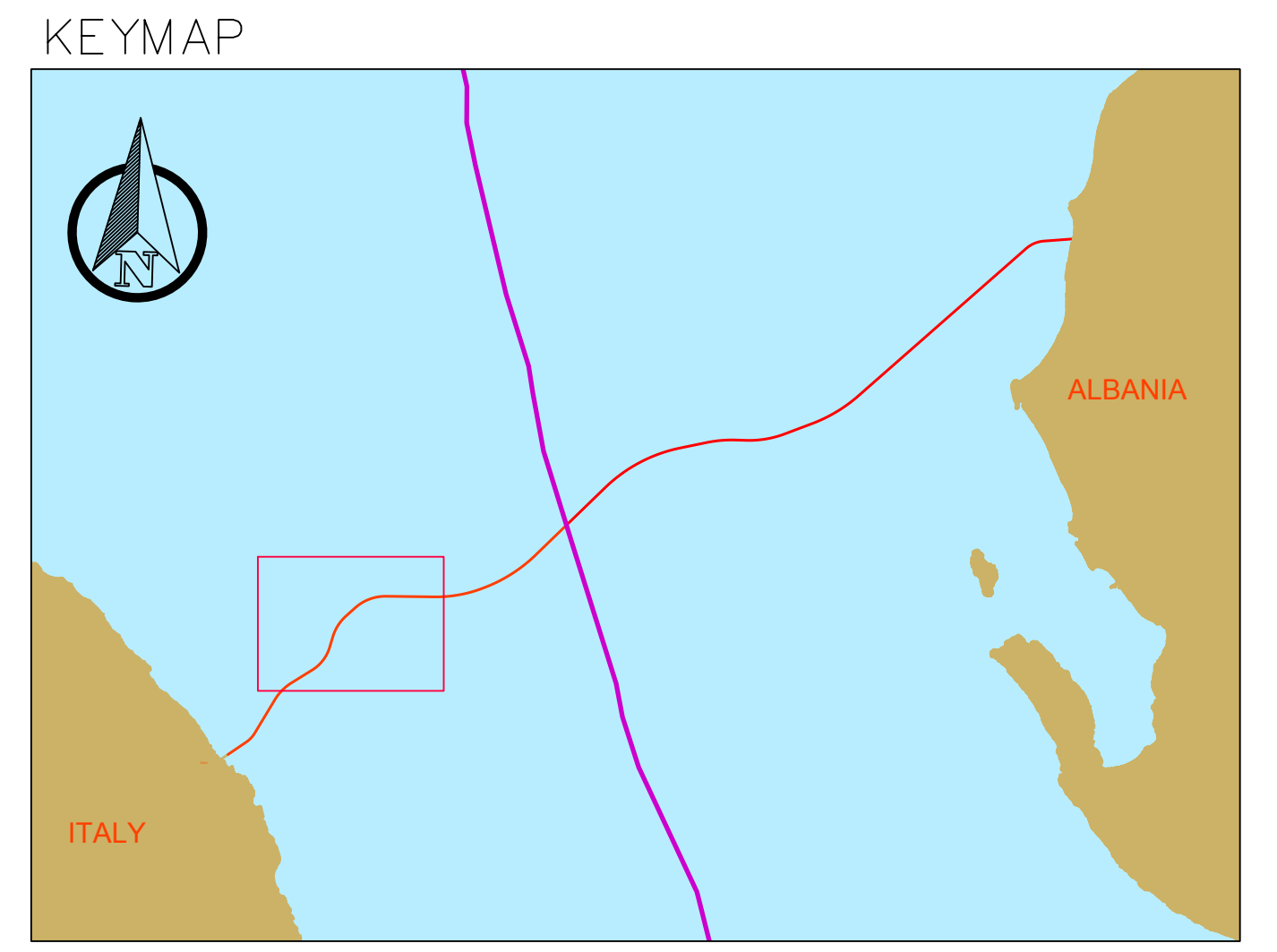
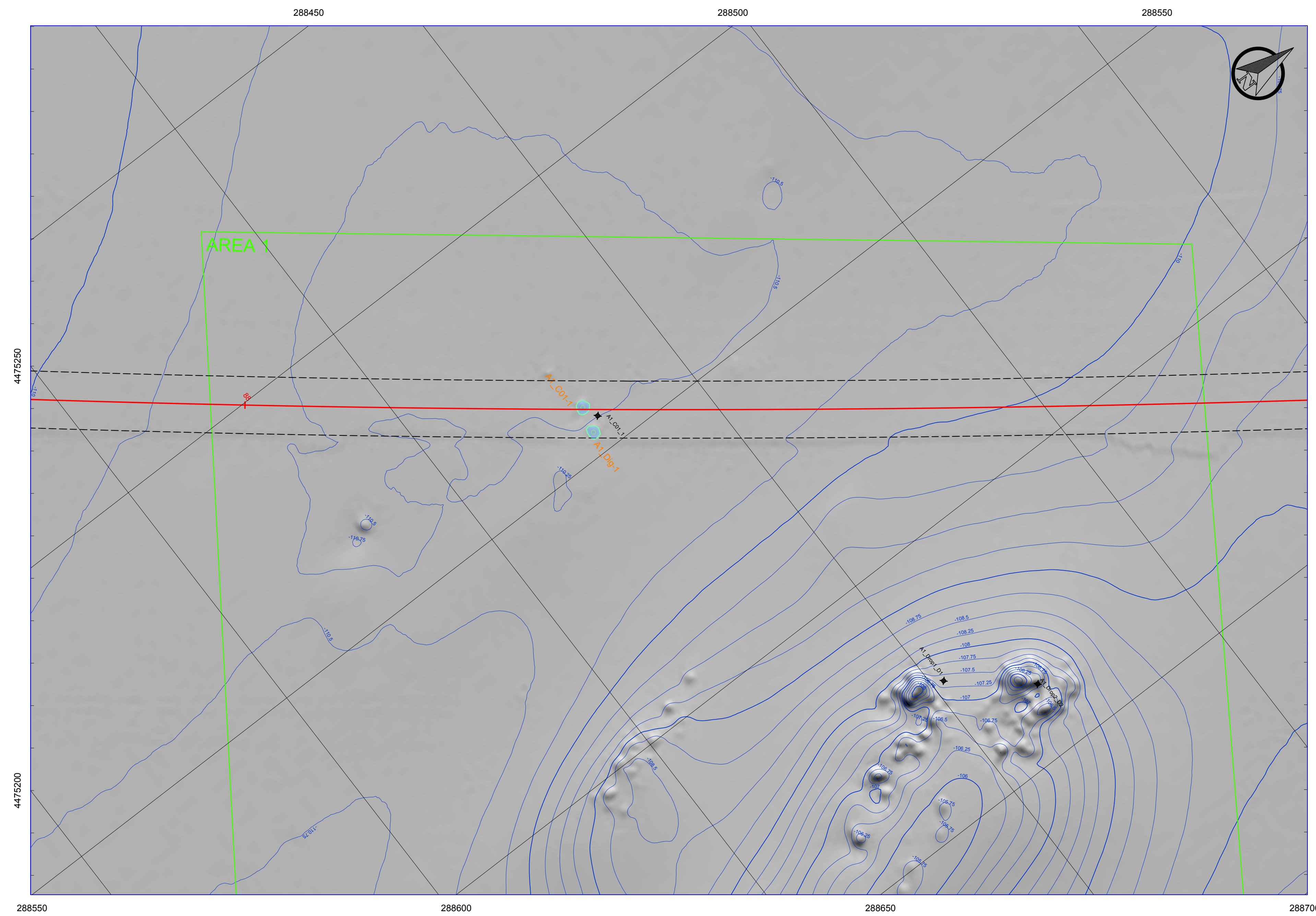
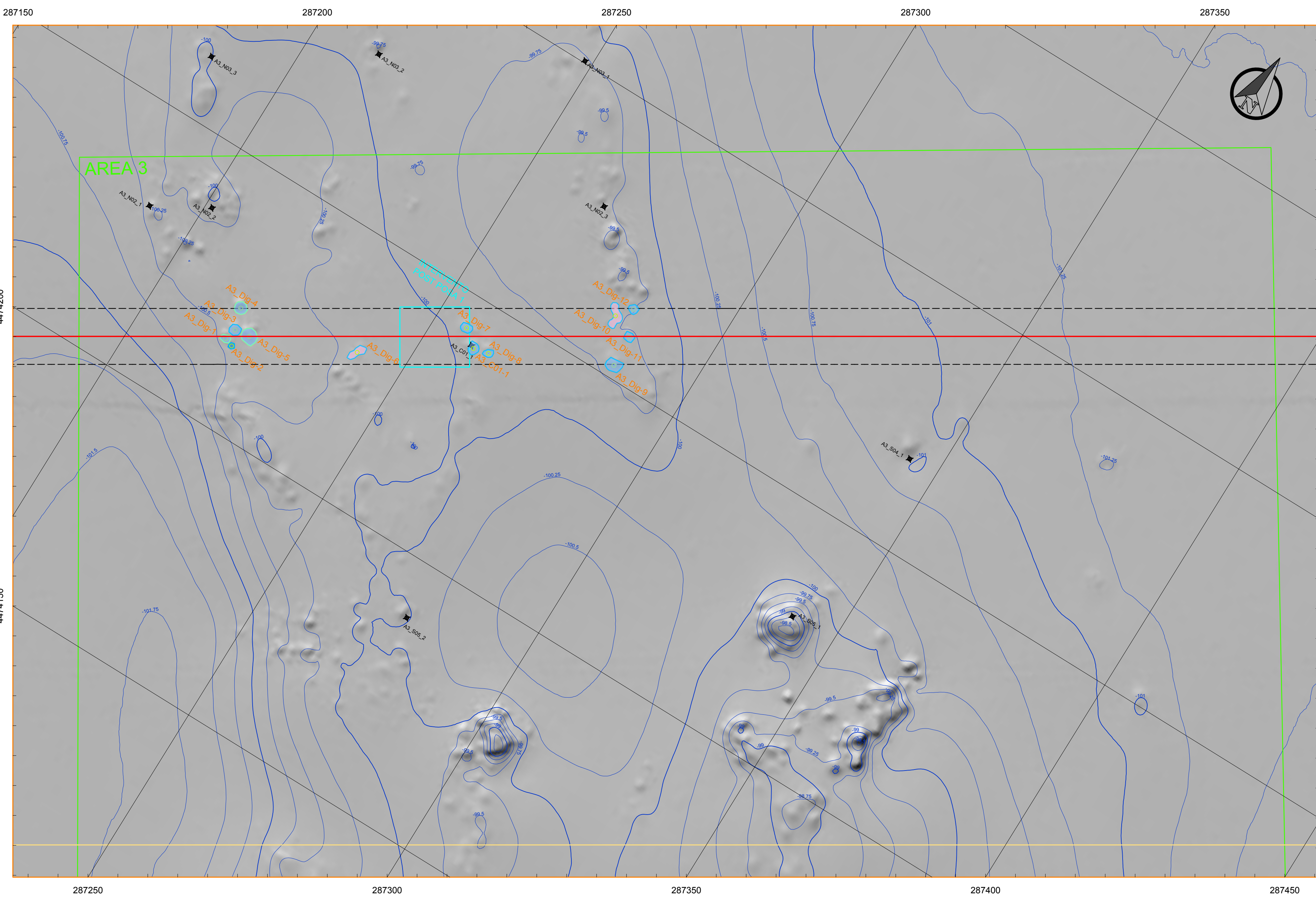
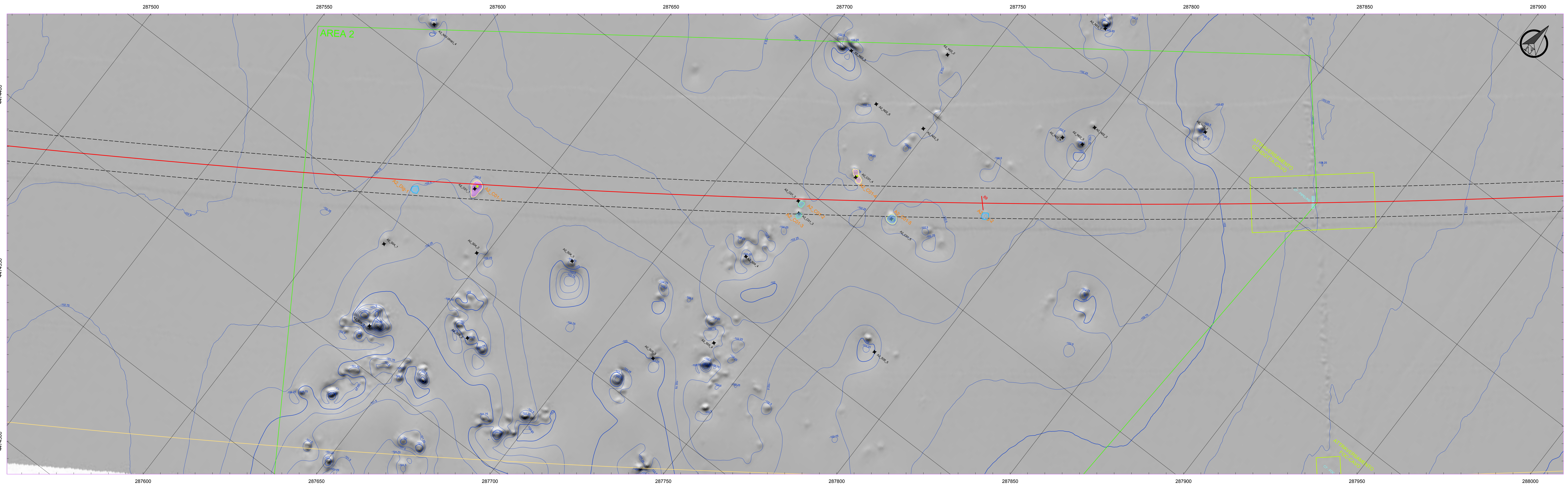
ALLEGATO 11

Studio Preliminare Ambientale

**Condotta sottomarina ed affioramenti di biocostruzioni
Prescrizioni A.9, A.10 e A.31 del D.M. 223 del 11/09/2014**

CARTA DEGLI AFFIORAMENTI LUNGO LA PIPELINE/FOC (AREE 1-2-3)

(Doc. Rif. No. OPL00-C493-150-Y-TRX-0013)



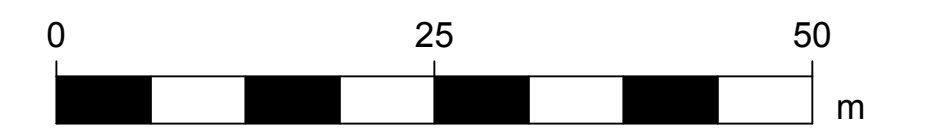
LEGENDA / LEGENDA

- PIPELINE/FOC (CENTER LINE) / PIPELINE/FOC (LINEA CENTRALE)
- BUFFER 5 m + 5 m FOOTPRINT / BUFFER 5 m + 5 m FOOTPRINT
- CABLE CROSSING ("PROGETTO DEFINITIVO 2014")
- BATHYMETRY / BATIMETRIA:
 BATHYMETRY / BATIMETRIA 25 cm
 BATHYMETRY / BATIMETRIA 1 m
- OGS BIOCONSTRUCTION SURVEY STATE OF CORALLIGENOUS ASSEMBLAGES / STATO DEI POPOLAMENTI CORALLIGENI:
- OGS BIOCONSTRUCTION SURVEY / OGS SURVEY BIOCOSTRUZIONI:
 OYSTER BED STRUCTURE / STRUTTURE LETTO OSTRICHE
- STRUCTURES DISTRIBUTION / DISTRIBUZIONE STRUTTURE:
 STRUCTURES DIGITIZATION*/ DIGITALIZZAZIONE STRUTTURE*
- OUTCROPS CLASSIFICATION / CLASSIFICAZIONE AFFIORAMENTI:**
- MAXIMUM LENGTH / LUNGHEZZA MASSIMA:**
- CLASS / CLASSE C1 (Lmax <2m)
- CLASS / CLASSE C2 (Lmax 2-4m)
- CLASS / CLASSE C3 (Lmax 4-6m)
- CLASS / CLASSE C4 (Lmax 6-8m)
- CLASS / CLASSE C5 (Lmax 8-10m)
- MAX SLOPE / PENDENZA MASSIMA:**
- CLASS / CLASSE P1 (Pmax <10°)
- CLASS / CLASSE P2 (Pmax 10°-20°)
- CLASS / CLASSE P3 (Pmax 20°-30°)
- CLASS / CLASSE P4 (Pmax 30°-40°)
- CLASS / CLASSE P5 (Pmax >40°)
- ELEVATION / ELEVAZIONE:**
- CLASS / CLASSE E1 (Elev <0.5m)
- CLASS / CLASSE E2 (Elev 0.5-1m)
- ▲ CLASS / CLASSE E3 (Elev 1-2m)
- ▲ CLASS / CLASSE E4 (Elev 2-3m)
- INTERVENTI POSTPOSA
- ATTRAVERSAMENTI CAVI

NOTES

* Visible when classified outcrops layers are disabled / visibile quando gli affioramenti classificati sono disabilitati.

Coordinate System Reference: WGS84 (ETRF 1989) Datum, WGS84 Spheroid
 Grid coordinates are in metres on the Universal Transverse Mercator Projection, Zone 34 N, Central Meridian 21°E.



SUPPLIER DOCUMENT NUMBER 16-1352-H14	REVISION NO. 0	RIR
---	-------------------	------------

PROJ. TITLE TAP Trans Adriatic Pipeline Project	TAG NUMBERS ---
DRAWING TITLE ALLEGATO 11 CARTA DEGLI AFFIORAMENTI PIPELINE/FOC (BUFFER +/- 5 m) AREE 1-2-3	DRAWING NO. 1
FORMAT A0+	REVISION NO. 0

DRAWING NO. OPL00-C493-150-Y-TRX-0013