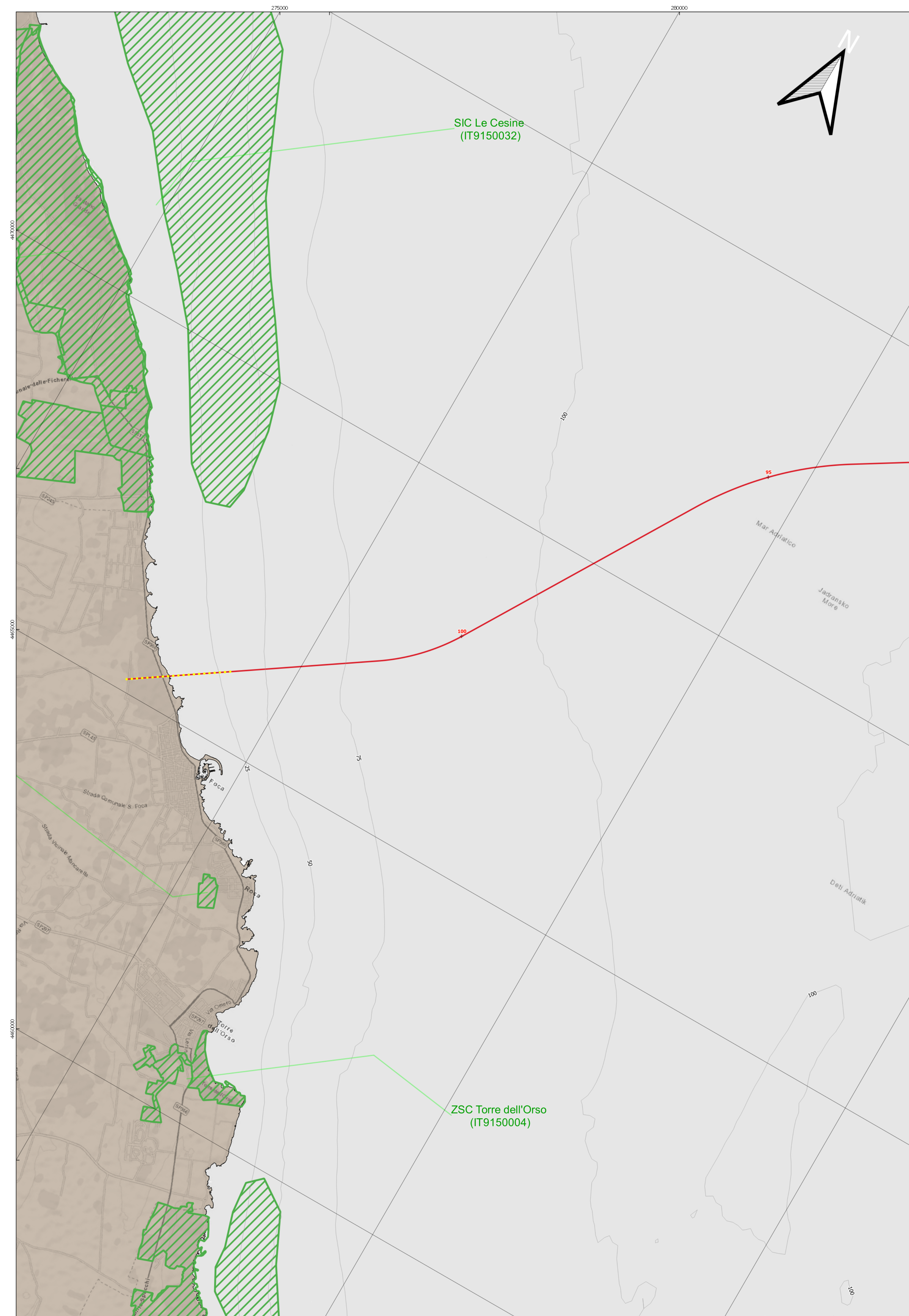
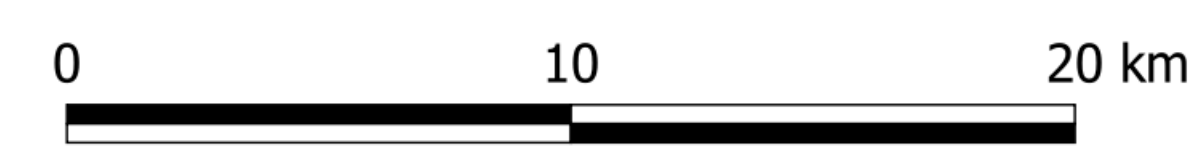
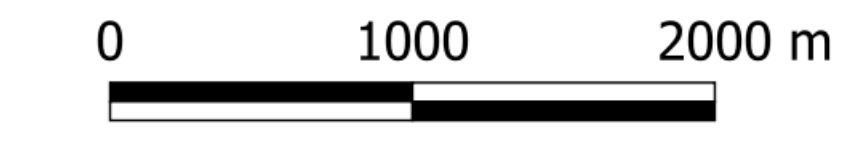


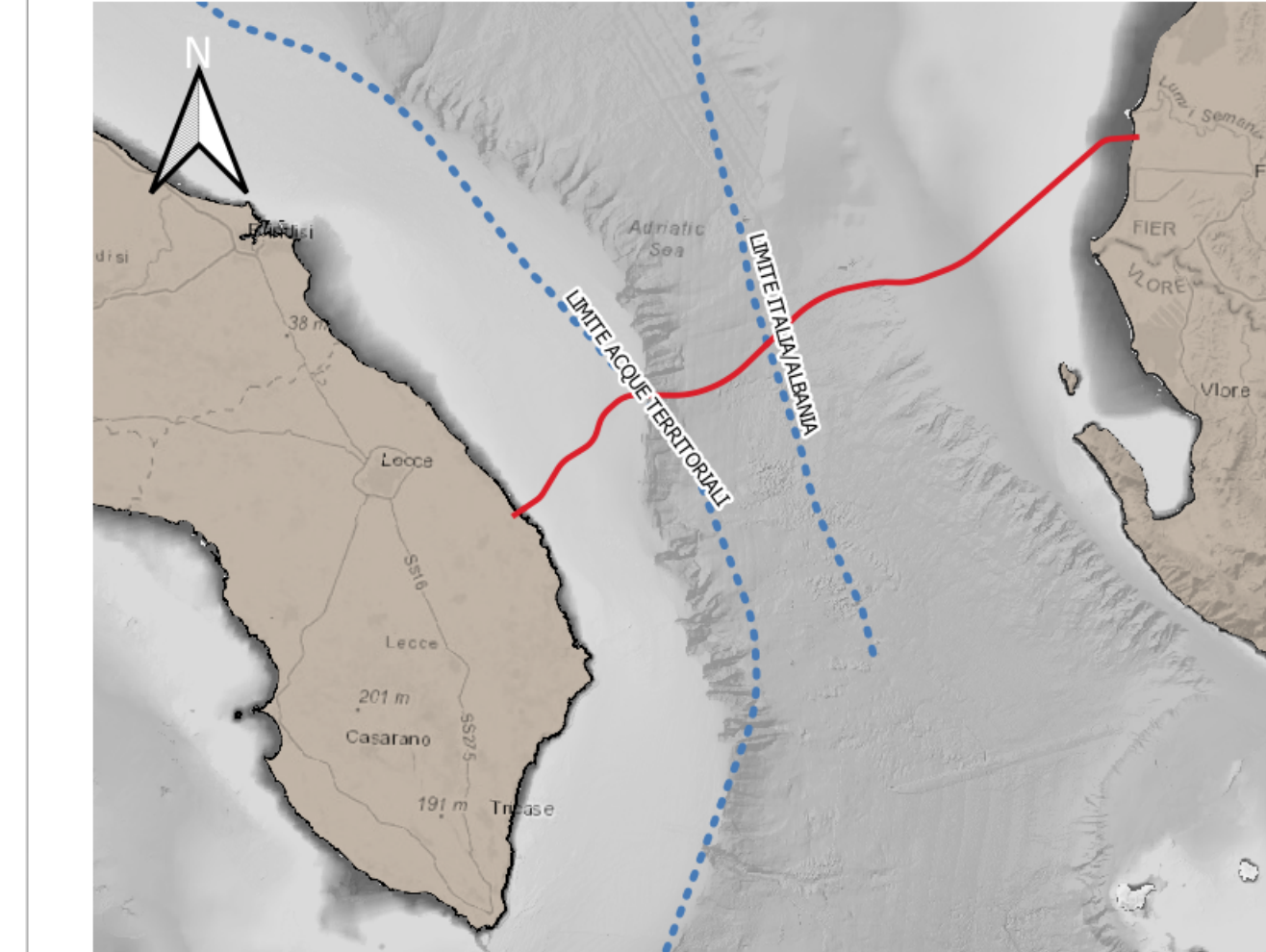
Rete Natura 2000 da Brindisi a Capo S. Maria di Leuca (scala 1:150,000)



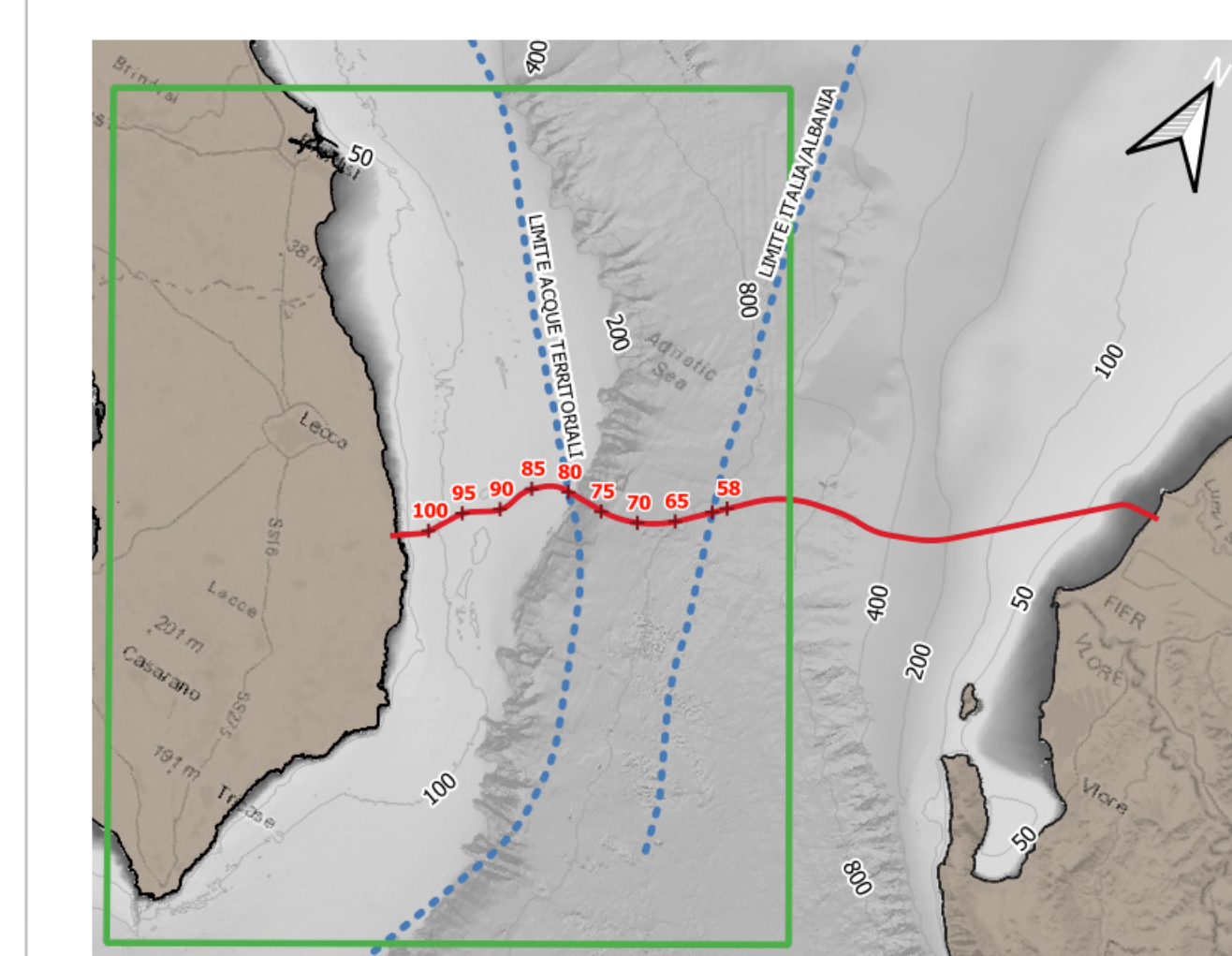
Rete Natura 2000 zona di San Foca (scala 1:25,000)



KEY MAP



KEY PLAN



LEGENDA



Progetto

- Pipeline/FOC
- - - - Microtunnel
- Rete Natura 2000

NOTE:

Confini dei Siti Natura 2000 relativi alla Trasmissione CE Dicembre 2017 (ftp://ftp.minambiente.it/PNM/Natura2000/trasmissioneCE_dicembre2017/)

Coordinate System Reference: WGS84 (ETRF 1989) Datum, WGS84 Spheroid Grid coordinates are in metres on the Universal Transverse Mercator Projection, Zone 34 N, Central Meridian 21°E.

		
NUMBER DOCUMENT NUMBER 16-1352-M07-H14	REVISION NUMBER 0	
PROJECT TITLE TAP Trans Adriatic Pipeline Project		
DRAWING TITLE ALLEGATO 12 - TAVOLA 1 RETE NATURA 2000		
DRAWING NO. 1	REVISION NO. 0	TAG NUMBERS
FORMAT A0+	SCALE 1:150000 1:250000	FACILITY CODE SYSTEM NO. RD CODE REVISION NO.
OPL00 - C493 - 150 - Y - TRX - 0013		