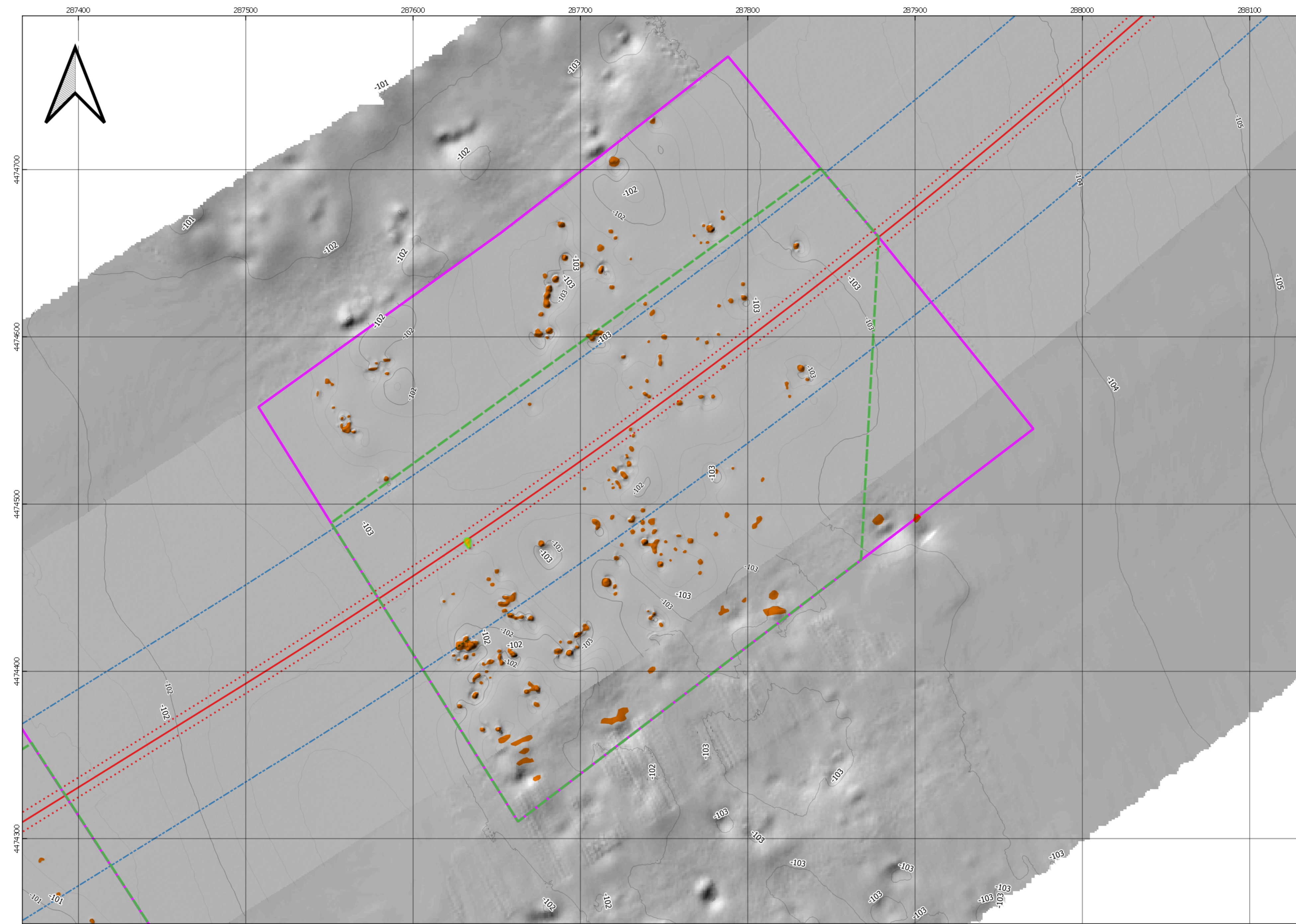
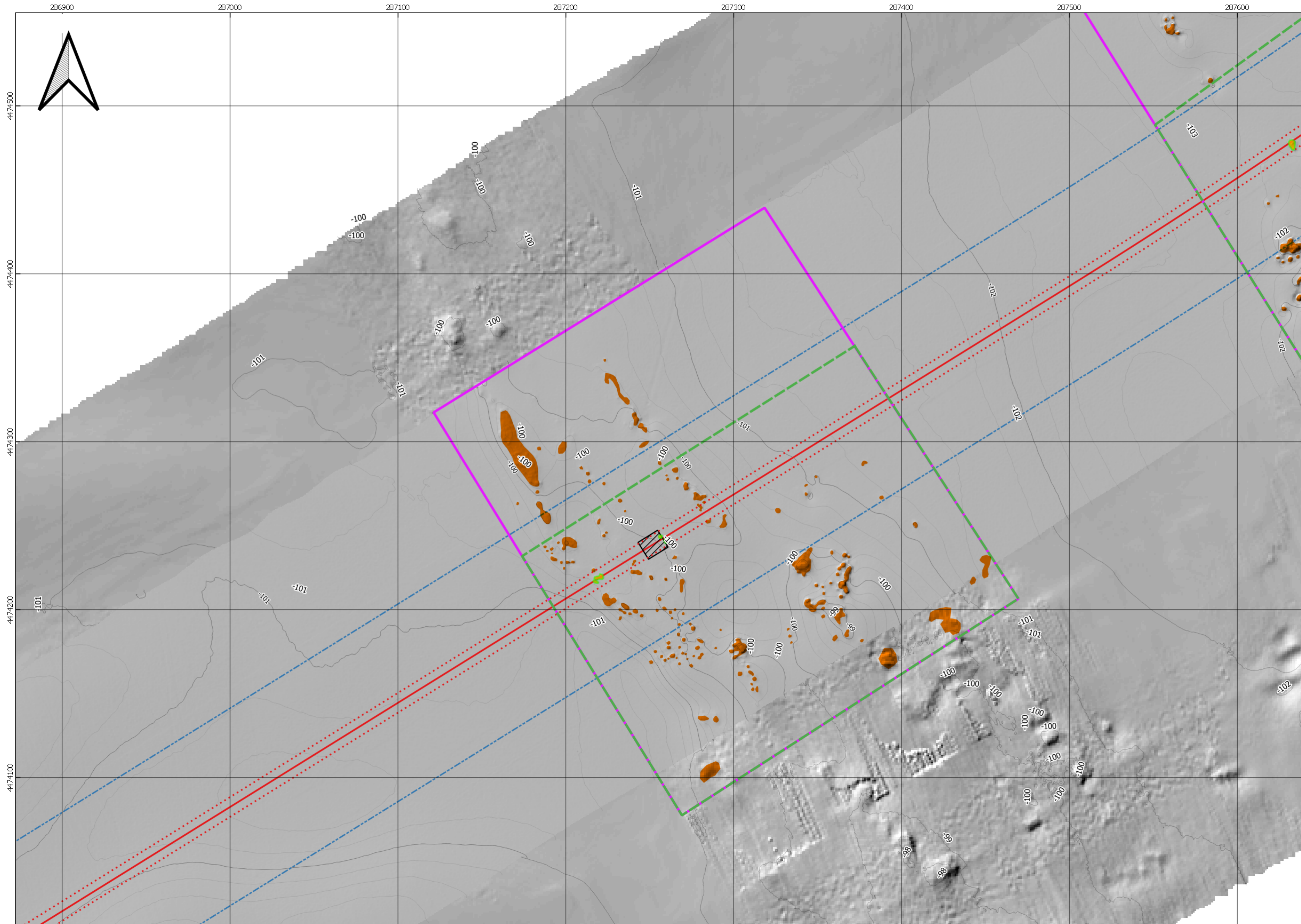


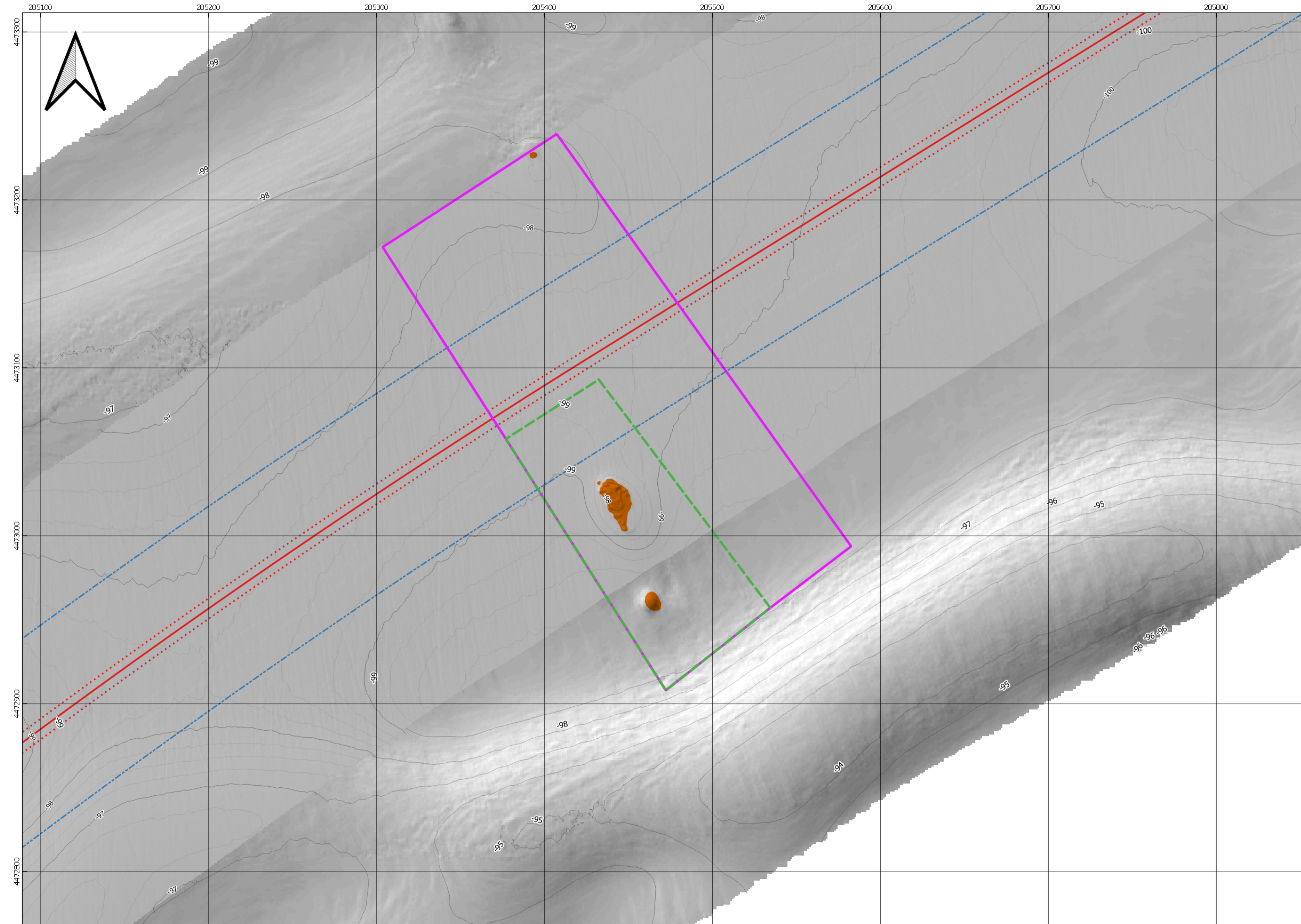
AREA 1



AREA 2

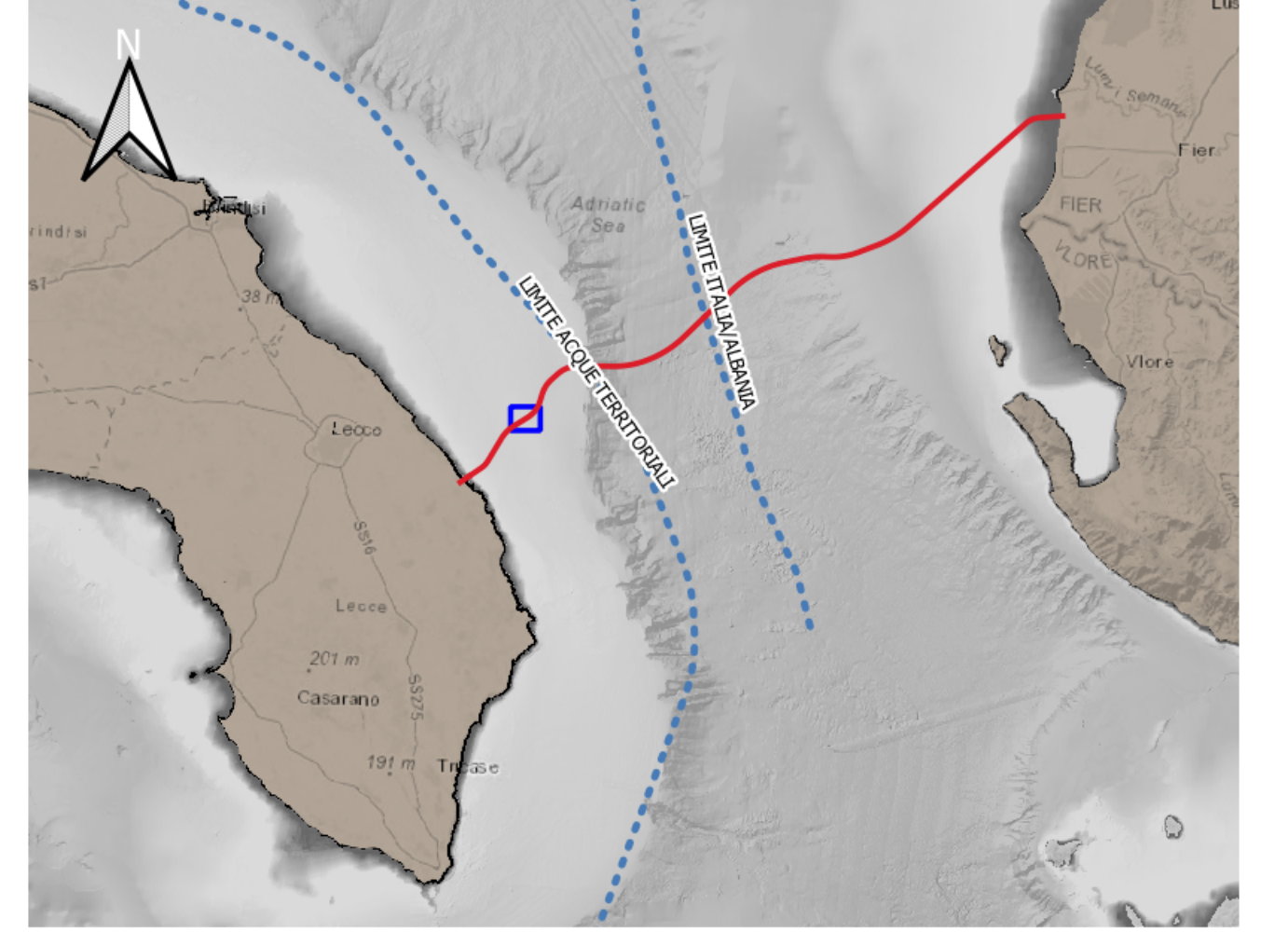


AREA 3

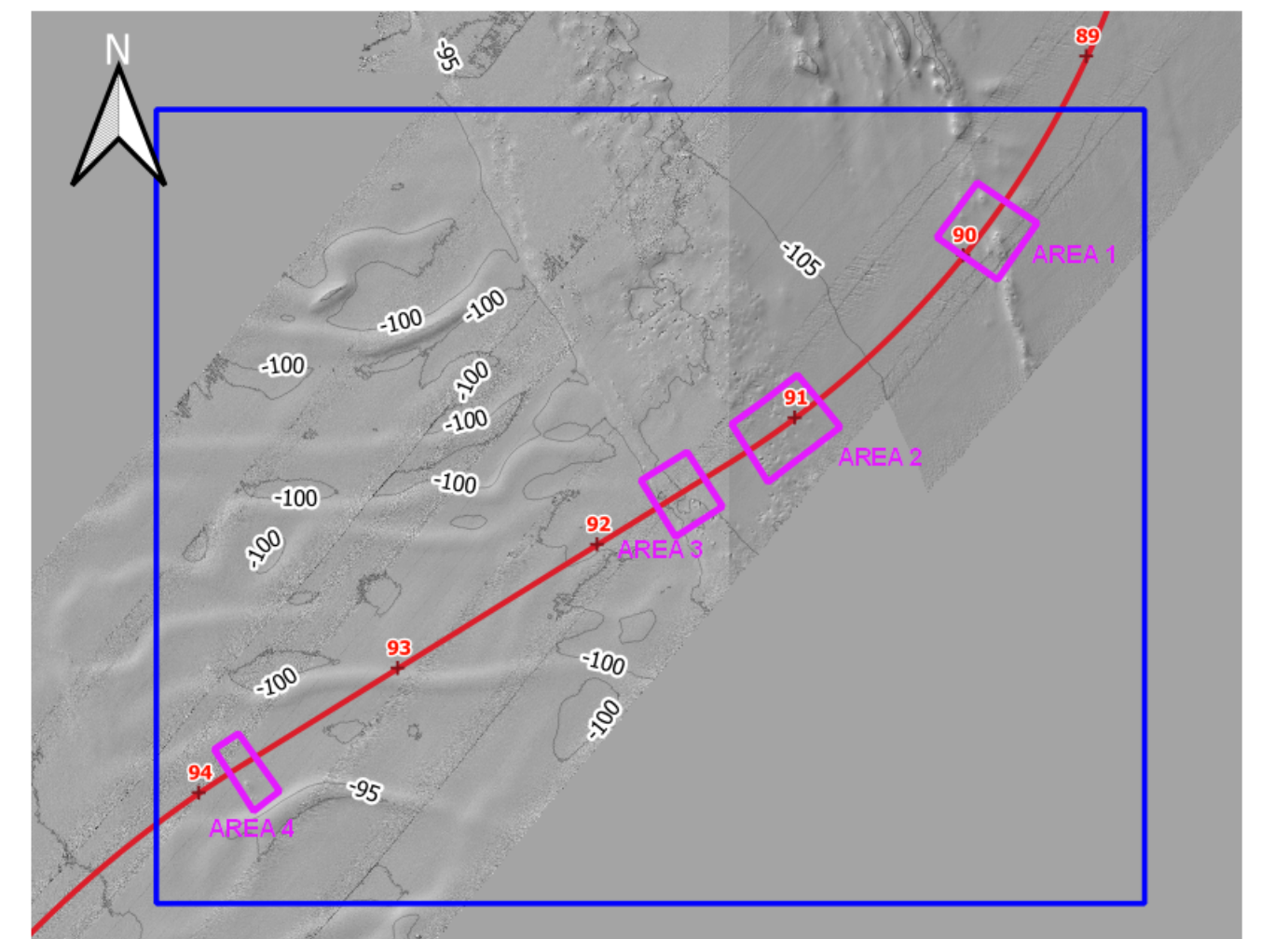


AREA 4

KEY MAP



KEY PLAN

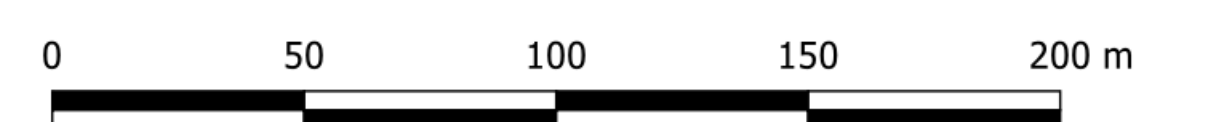


LEGENDA

- Pipeline/FOC (Footprint)
- Corridoio di Varo (+/- 5 m)
- Buffer 50 m (Pipeline/FOC)
- Post-Lay
- Strutture a letti di ostriche interferite
- Strutture a Letti di Ostriche
- Area 1-2-3-4 (OGS)
- Aree 1-2-3-4 (aree di analisi)

NOTE:
Strutture a letti di ostriche identificate con rilievi ROV e classificate dall'Istituto Nazionale di Oceanografia e Geofisica Sperimentale (OGS) (Campagna Giugno 2016). Digitalizzazione su Rilievi Geofisici MBES/SSS (Campagne ST12590 e FUGRO 2016).

Coordinate System Reference: WGS84 (ETRF 1989) Datum, WGS84 Spheroid
Grid coordinates are in metres on the Universal Transverse Mercator Projection, Zone 34 N, Central Meridian 21°E.



		RIIR
SHEET DOCUMENT NUMBER 16-1352-M10-H14	REVISION NUMBER 0	
PROJECT TITLE TAP Trans Adriatic Pipeline Project		
DRAWING TITLE ALLEGATO 12 - TAVOLA 4 (FOGLIO 2) CARTA DEGLI AFFICRAMENTI INTERFERITI - STRUTTURE A LETTI DI OSTRICHE (AREA 1-2-3-4) (SCALA 1:1500)		
DRAWING NO. 2	REVISION NO. 0	
OPL00 - C493 - 150 - Y - TRX - 0013		