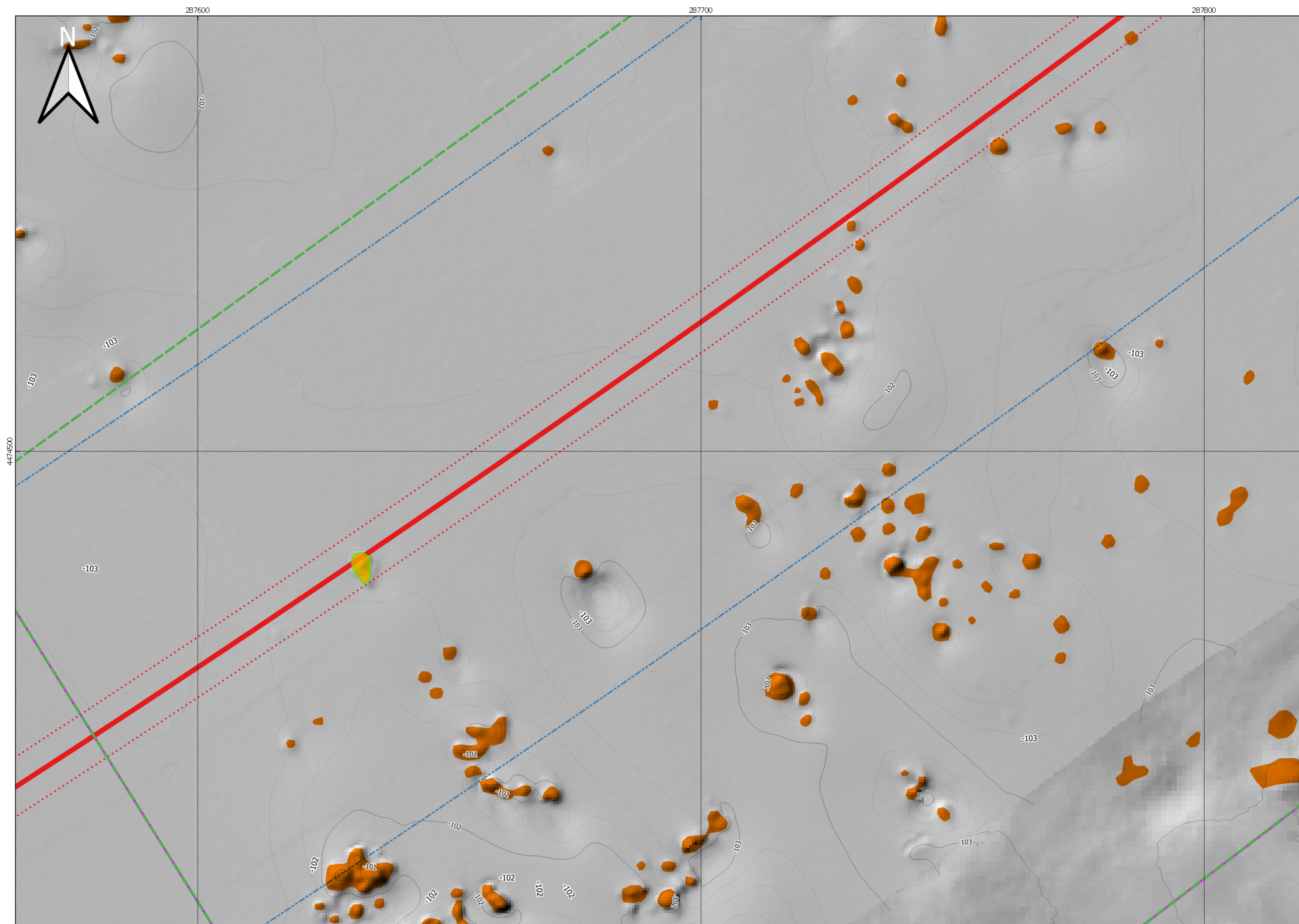
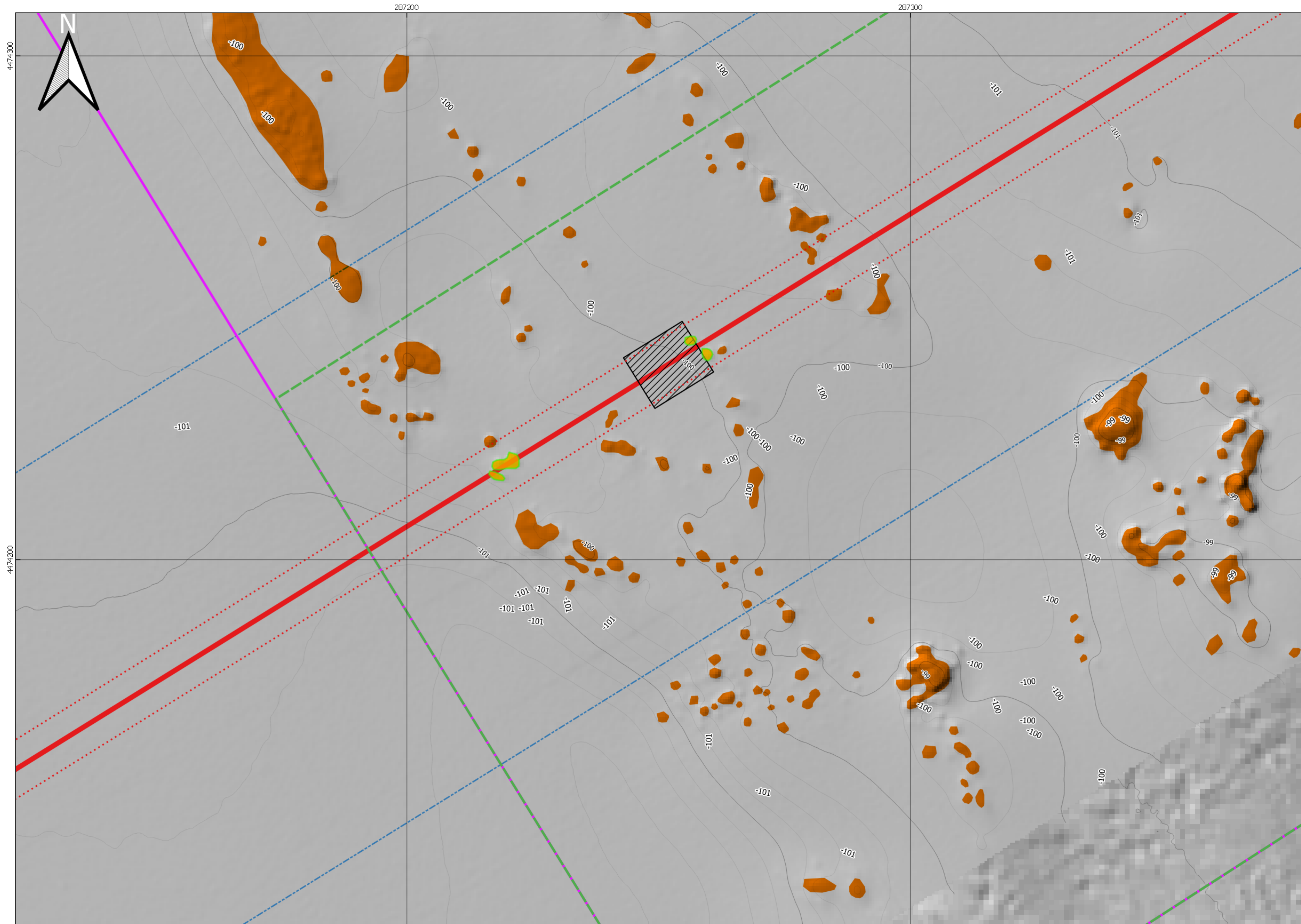


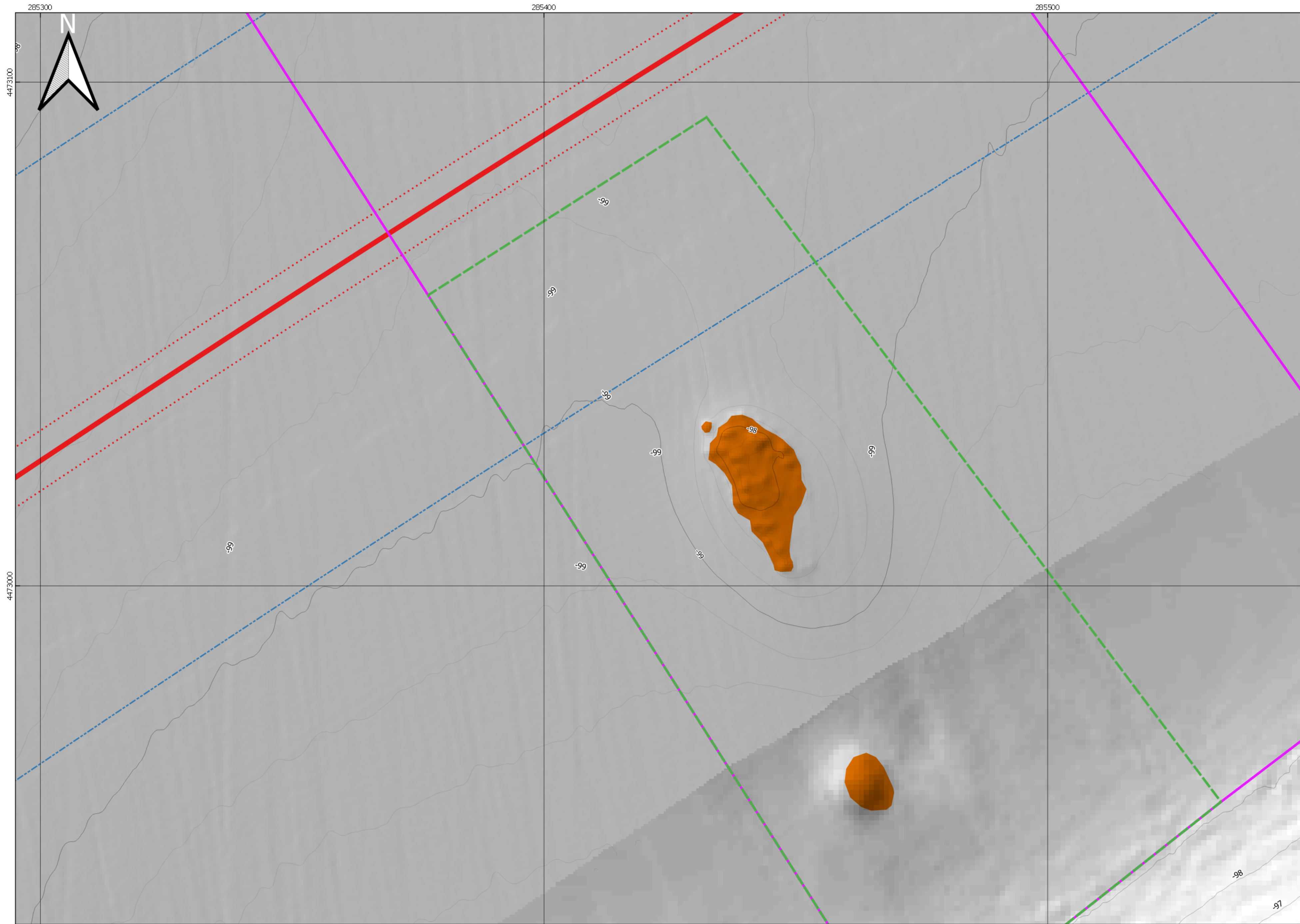
AREA 1



AREA 2

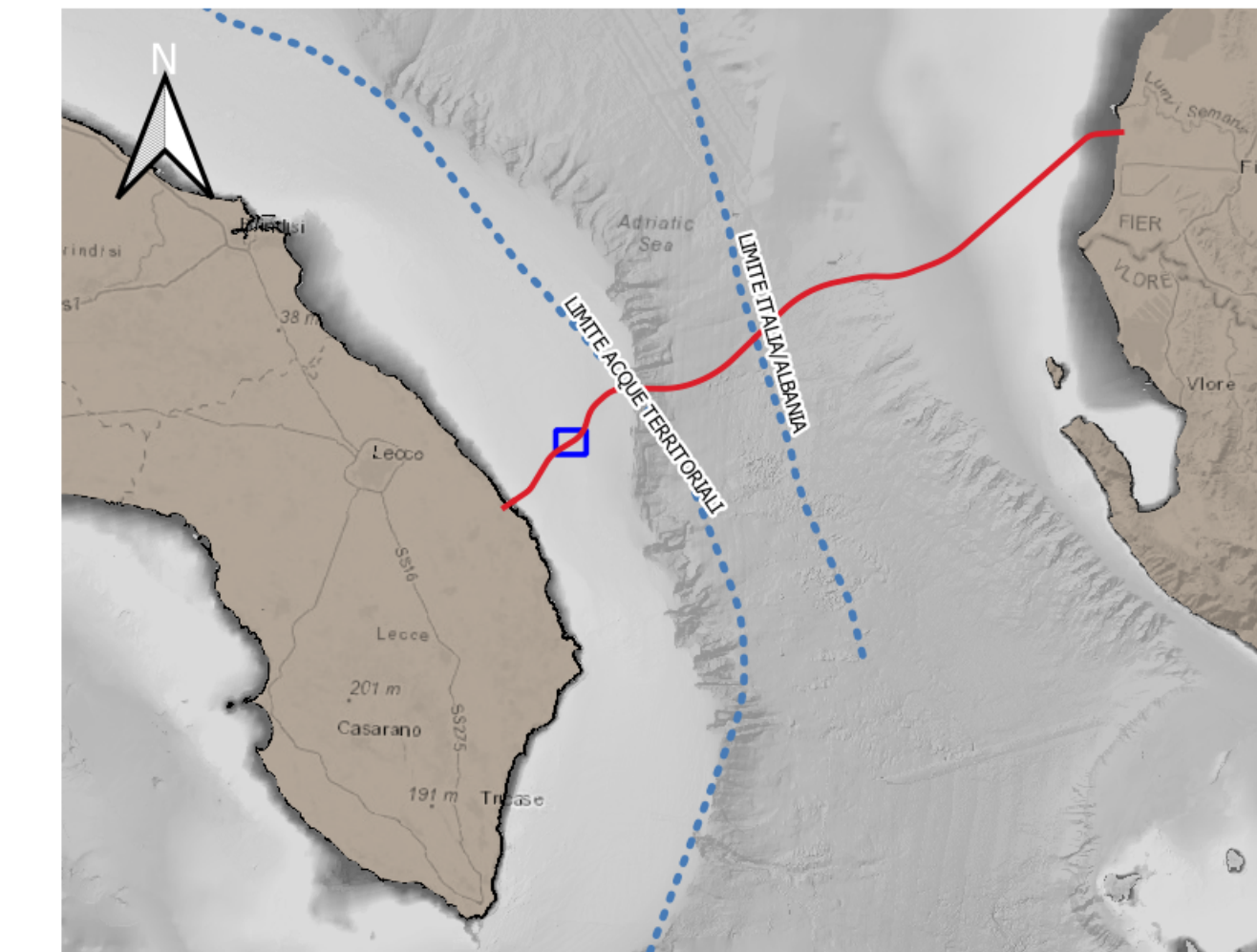


AREA 3

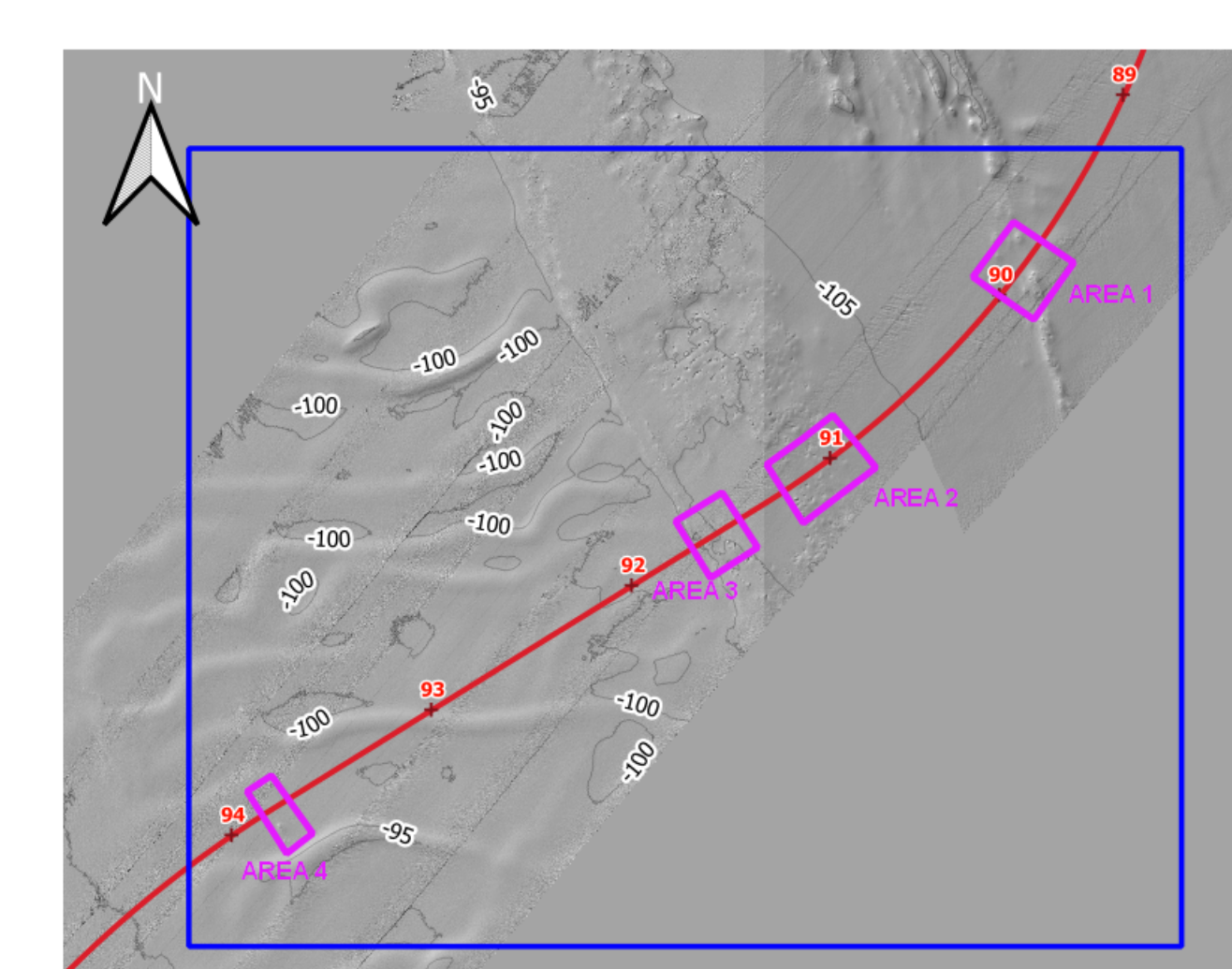


AREA 4

KEY MAP



KEY PLAN

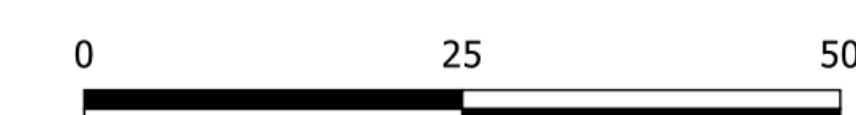


LEGENDA

- Pipeline/FOC (Footprint)
- Corridoio di Varo (+/- 5 m)
- Buffer 50 m (Pipeline/FOC)
- Post-Lay
- Strutture a letti di ostriche interferite
- Strutture a Letti di Ostriche
- Aree 1-2-3-4 (OGS)
- Aree 1-2-3-4 (aree di analisi)

NOTE:  
 Strutture a letti di ostriche identificate con rilievi ROV e classificate dall'Istituto Nazionale di Oceanografia e Geofisica Sperimentale (OGS) (Campagna Giugno 2016); Digitalizzazione su Rilievi Geofisici MBES/SSS (Campagne ST12590 e FUGRO 2016).

Coordinate System Reference: WGS84 (ETRF 1989) Datum, WGS84 Spheroid  
 Grid coordinates are in metres on the Universal Transverse Mercator Projection, Zone 34 N, Central Meridian 21°E.



SAPUBER DOCUMENT NUMBER 16-1352-M10-H14		REVISION NO. 0			
PROJECT TITLE <b>TAP Trans Adriatic Pipeline Project</b>					
DRAWING TITLE <b>ALLEGATO 12 - TAVOLA 4 (FOGLIO 3)          CARTA DEGLI AFFIORAMENTI INTERFERITI - STRUTTURE A LETTI DI OSTRICHE (AREA 1-2-3-4) (DETTAGLIO A SCALA 1:500)</b>					
FORMATT A0+	SCALE 1:1500	FACILITY CODE ----	SYSTEM NO. ----	SD CODE ----	REVISION NO. 0
DRAWINGS NO. <b>OPL00 - C493 - 150 - Y - TRX - 0013</b>					