







NUOVO SVINCOLO DI COSENZA NORD AL km 250+000 - IN LOCALITÀ SETTIMO DI RENDE

PROGETTO DI FATTIBILITA' TECNICA ED ECONOMICA


Legenda

-  Intervento in nuova sede
-  Adeguamento in sede viabilità esistente



ELEMENTI DI STRUTTURA DEL PAESAGGIO

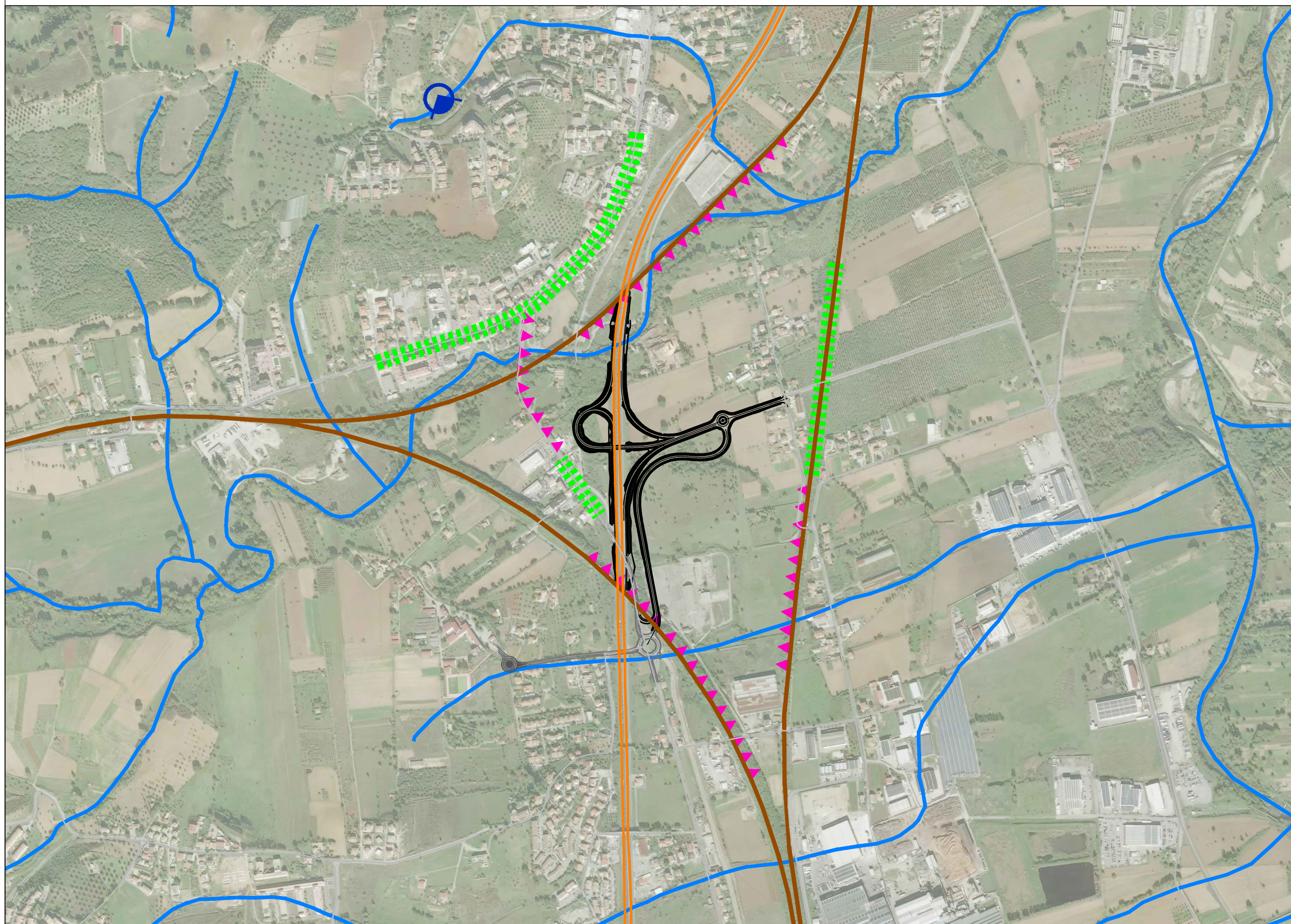
-  Autostrada A2
-  Rete viaria
-  Ferrovia
-  Reticolo Idrografico

ELEMENTI VISUALI

-  Punti di visuale statica a scarsa fruizione (verso l'intervento)

BARRIERE VISIVE

-  Visuale schermata
-  Visuale libera (verso l'intervento)



Lista di Controllo per la Valutazione Preliminare

ALLEGATO 10 - Carta della Percezione Visiva

tavola:

10

scala:

1:10.000