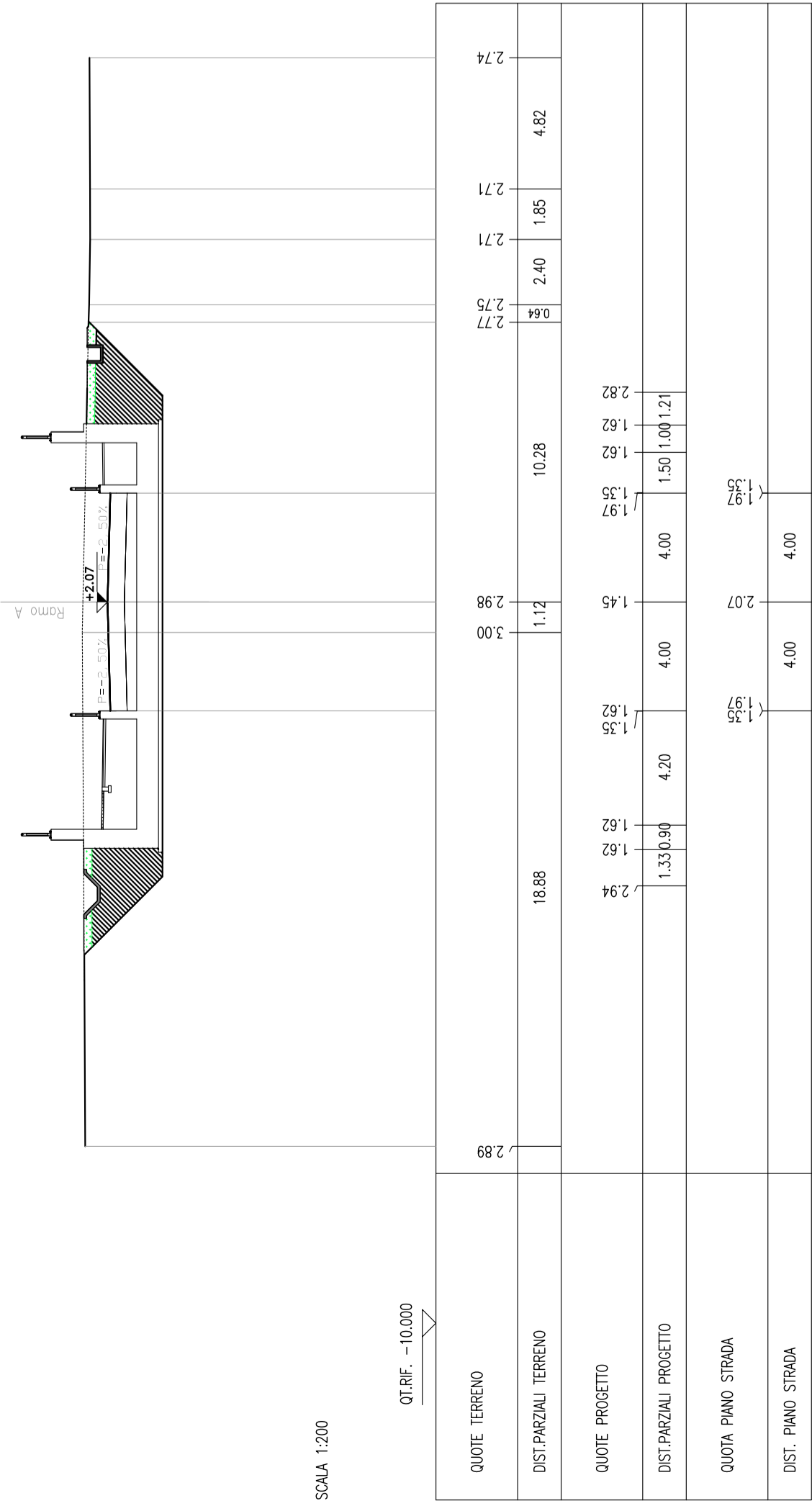
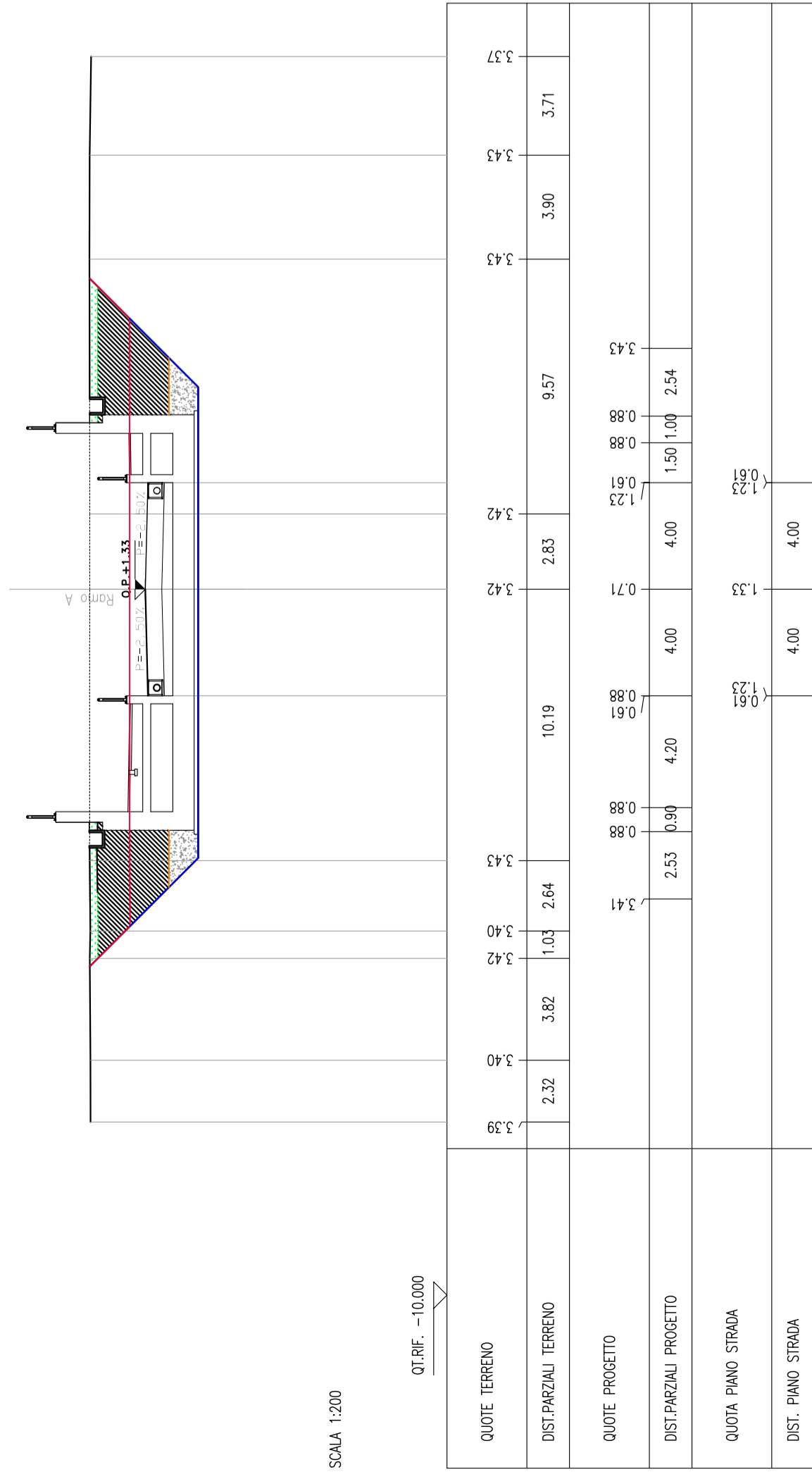


SEZIONE N. 1
DI PROGETTO: 0,706
DIST.PREC.: 20,000
DIST.SACC.: 20,000



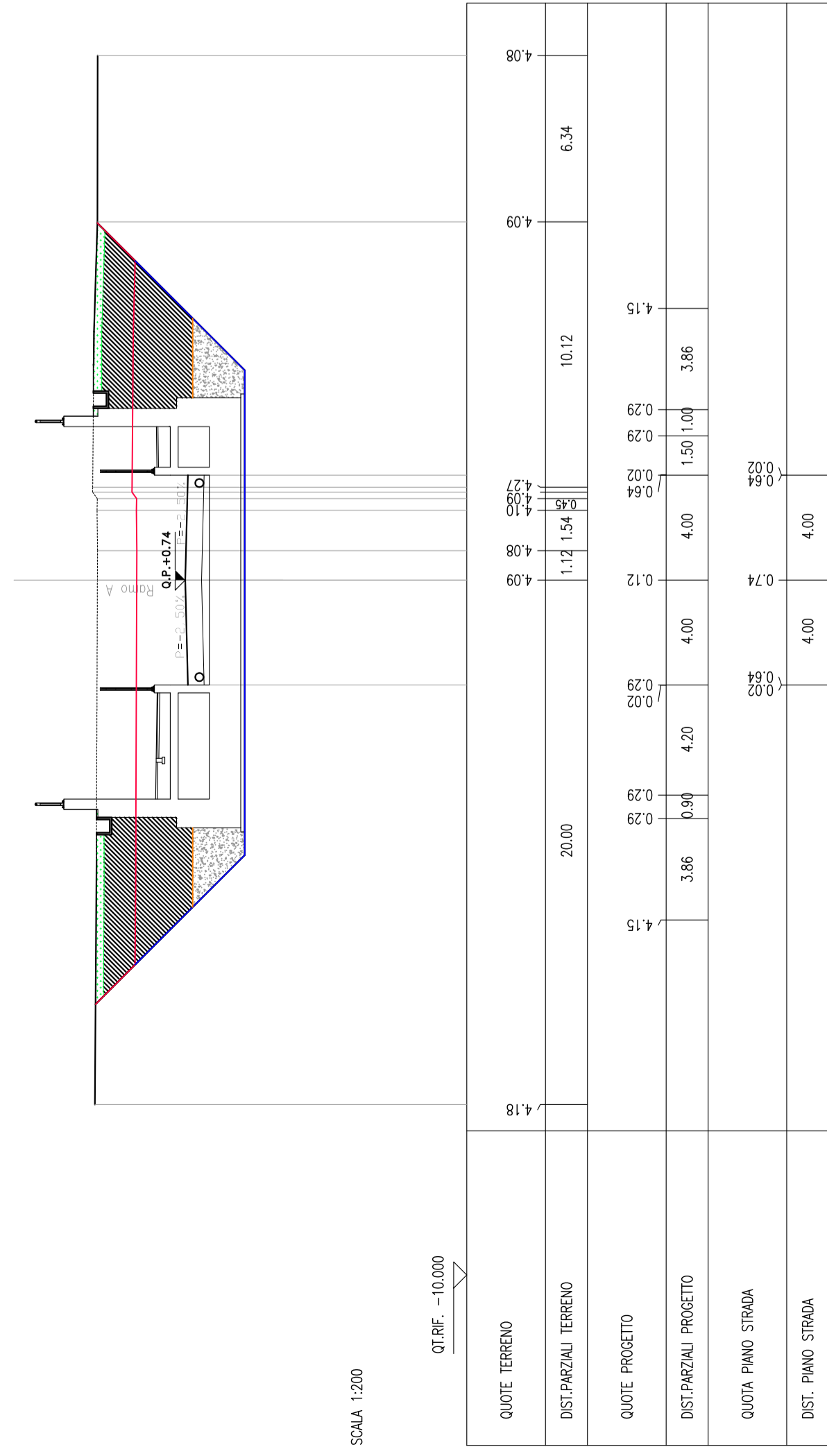
SCALA 1:200

SEZIONE N. 4
DI PROGETTO: 1,324
DIST.PREC.: 20,000
DIST.SACC.: 20,000



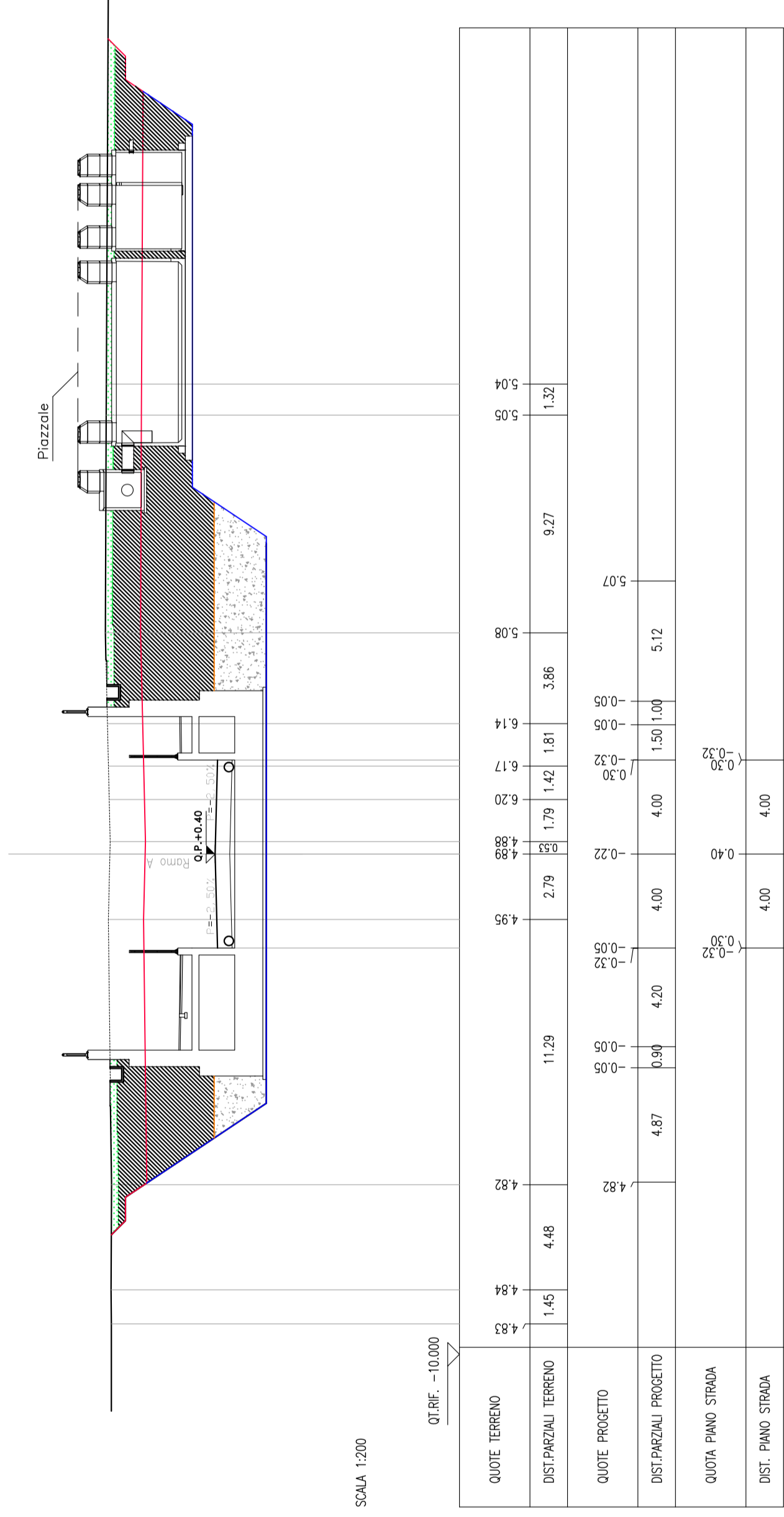
SCALA 1:200

SEZIONE N. 5
DI PROGETTO: 0,706
DIST.PREC.: 20,000
DIST.SACC.: 20,000



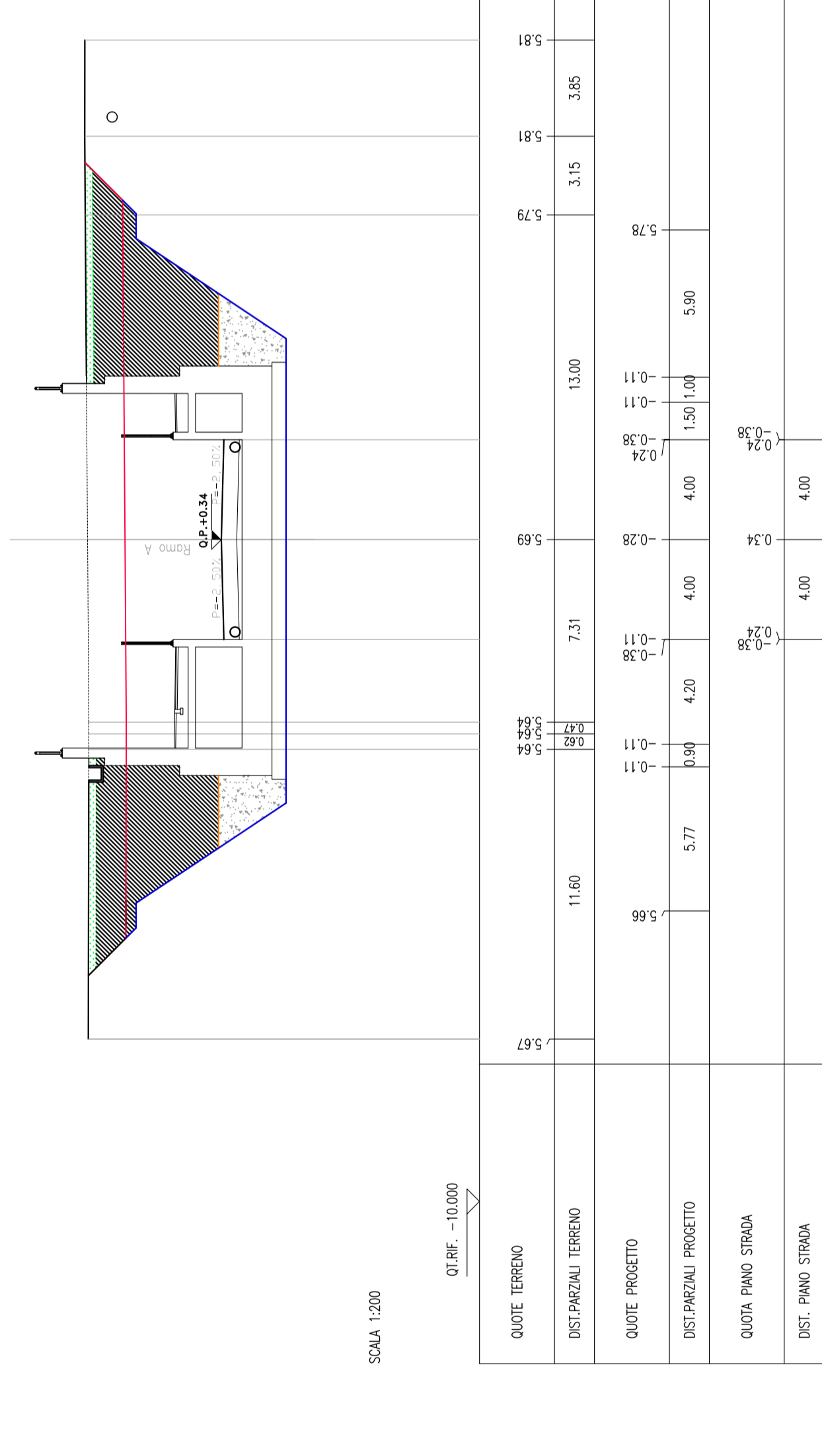
SCALA 1:200

SEZIONE N. 6
DI PROGETTO: 0,706
DIST.PREC.: 20,000
DIST.SACC.: 20,000



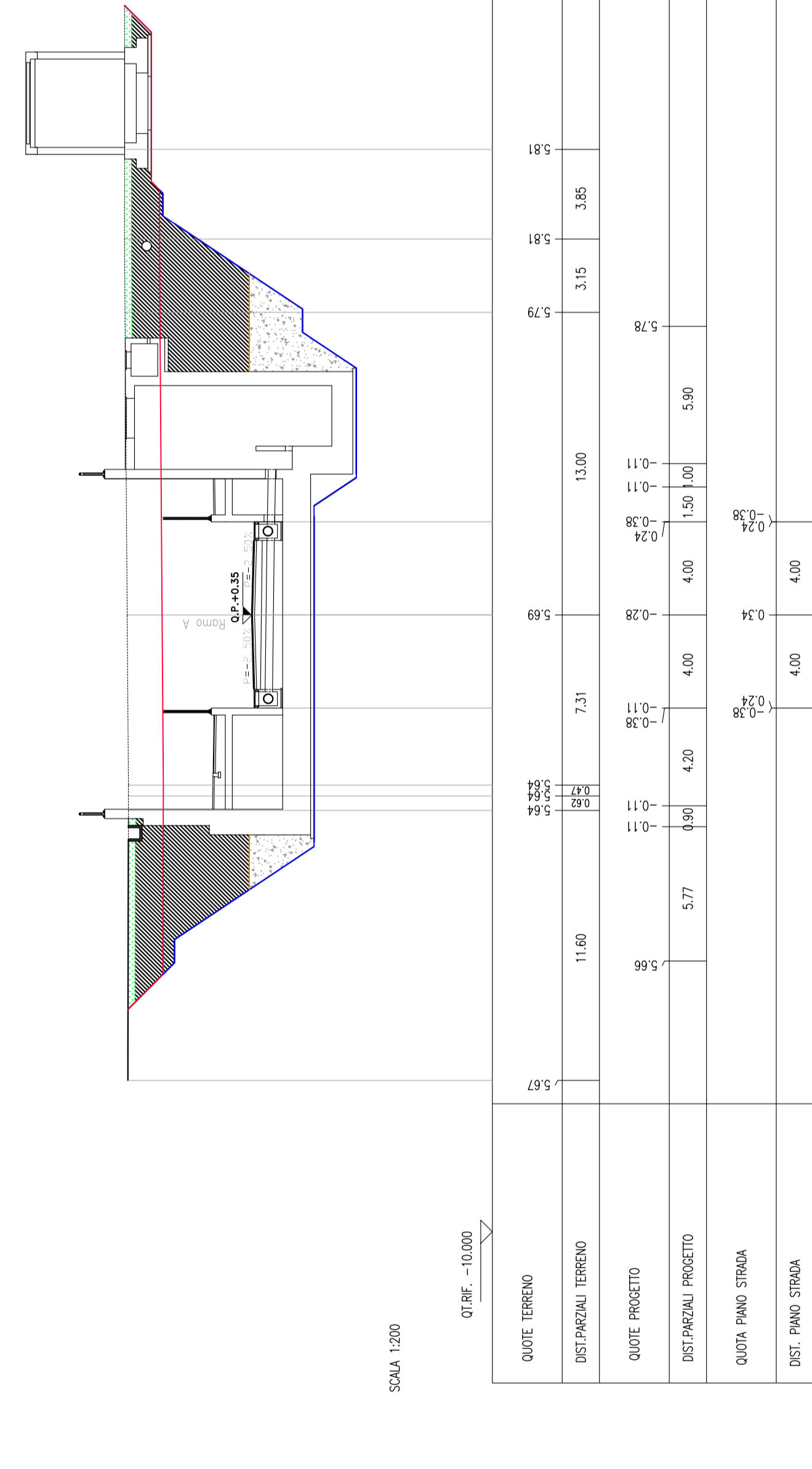
SCALA 1:200

SEZIONE N. 7
DI PROGETTO: 0,338
DIST.PREC.: 20,000
DIST.SACC.: 20,000



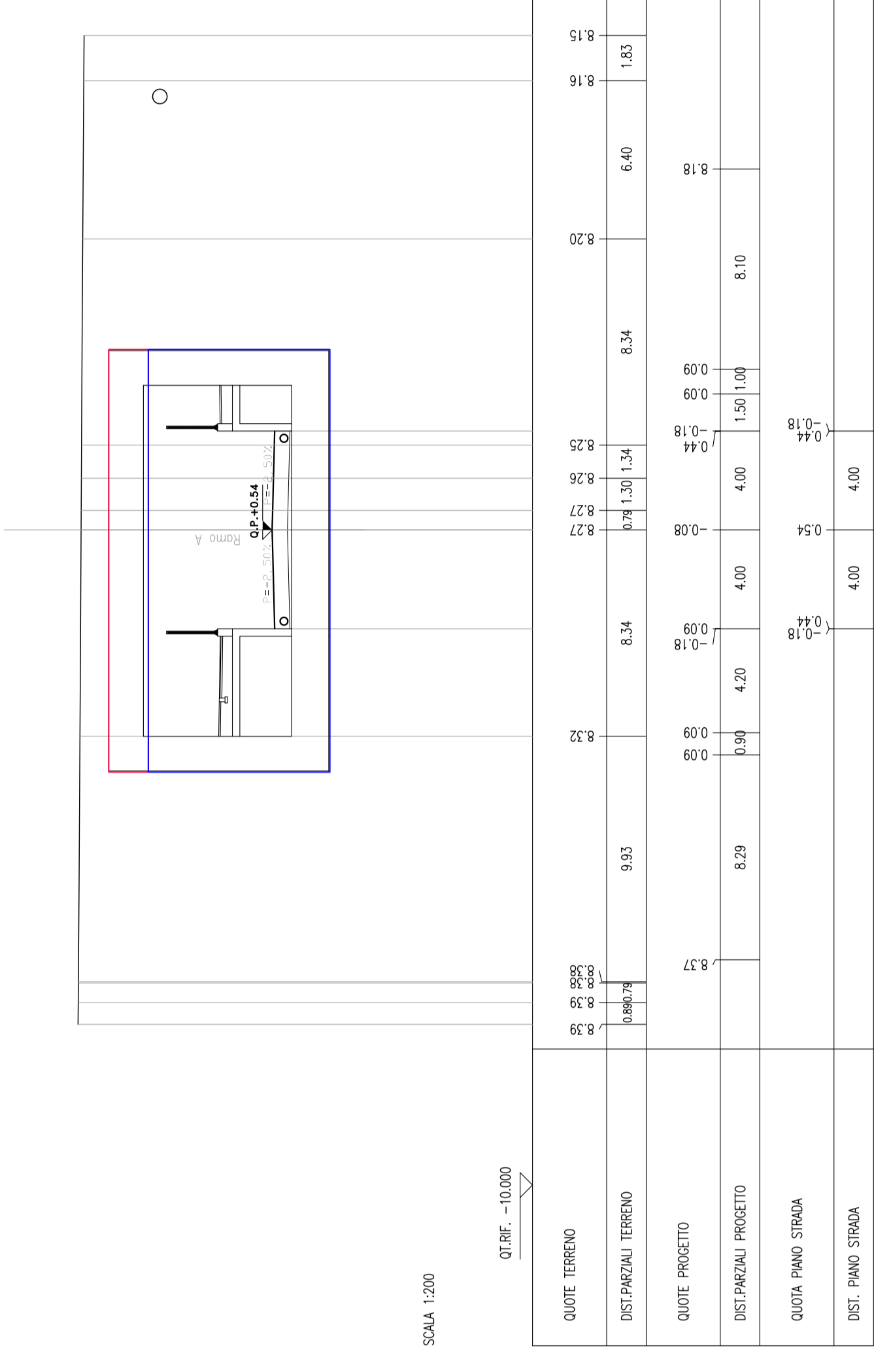
SCALA 1:200

SEZIONE N. 8
DI PROGETTO: 1,233
DIST.PREC.: 20,000
DIST.SACC.: 20,000



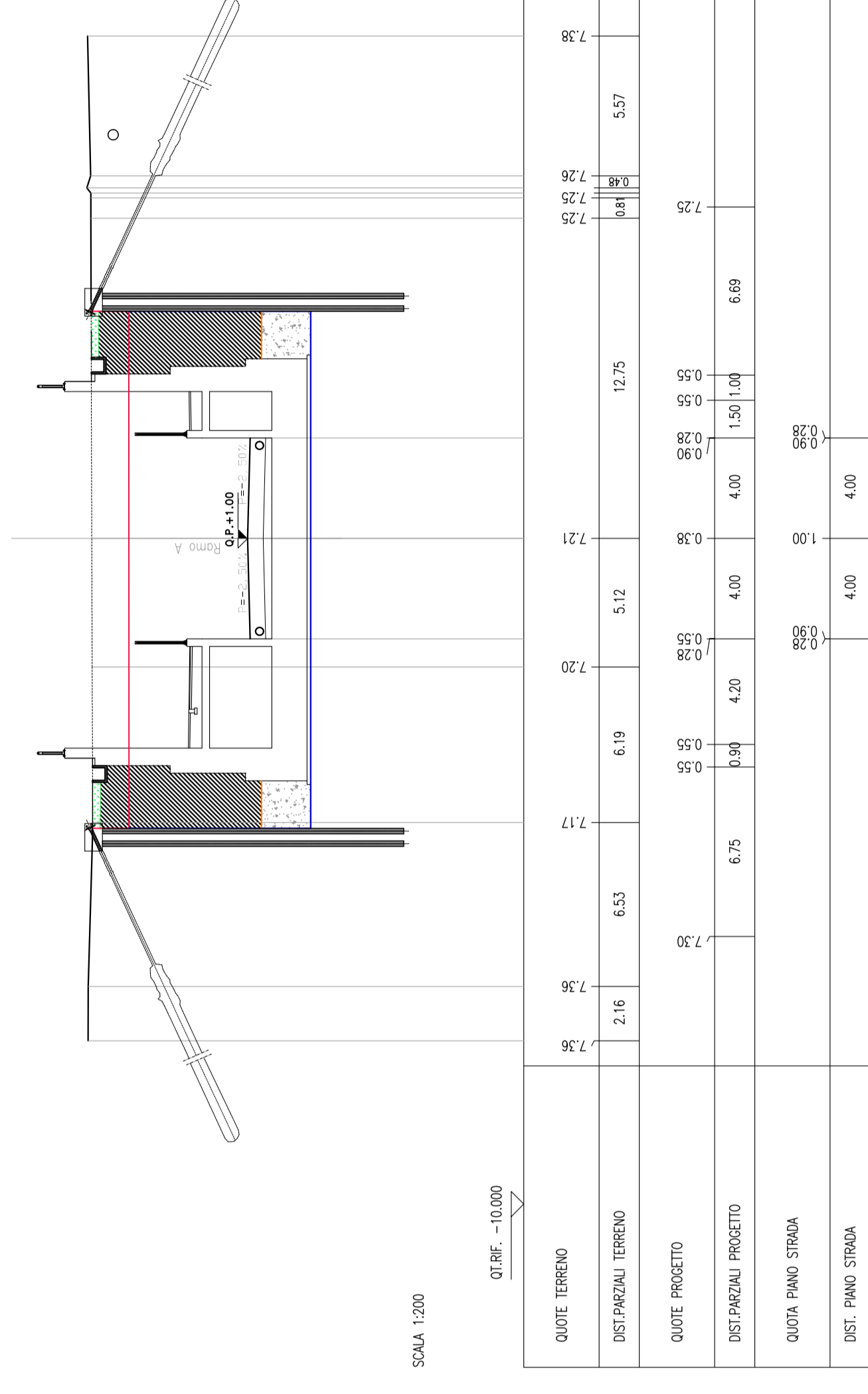
SCALA 1:200

SEZIONE N. 9
DI PROGETTO: 1,002
DIST.PREC.: 20,000
DIST.SACC.: 20,000



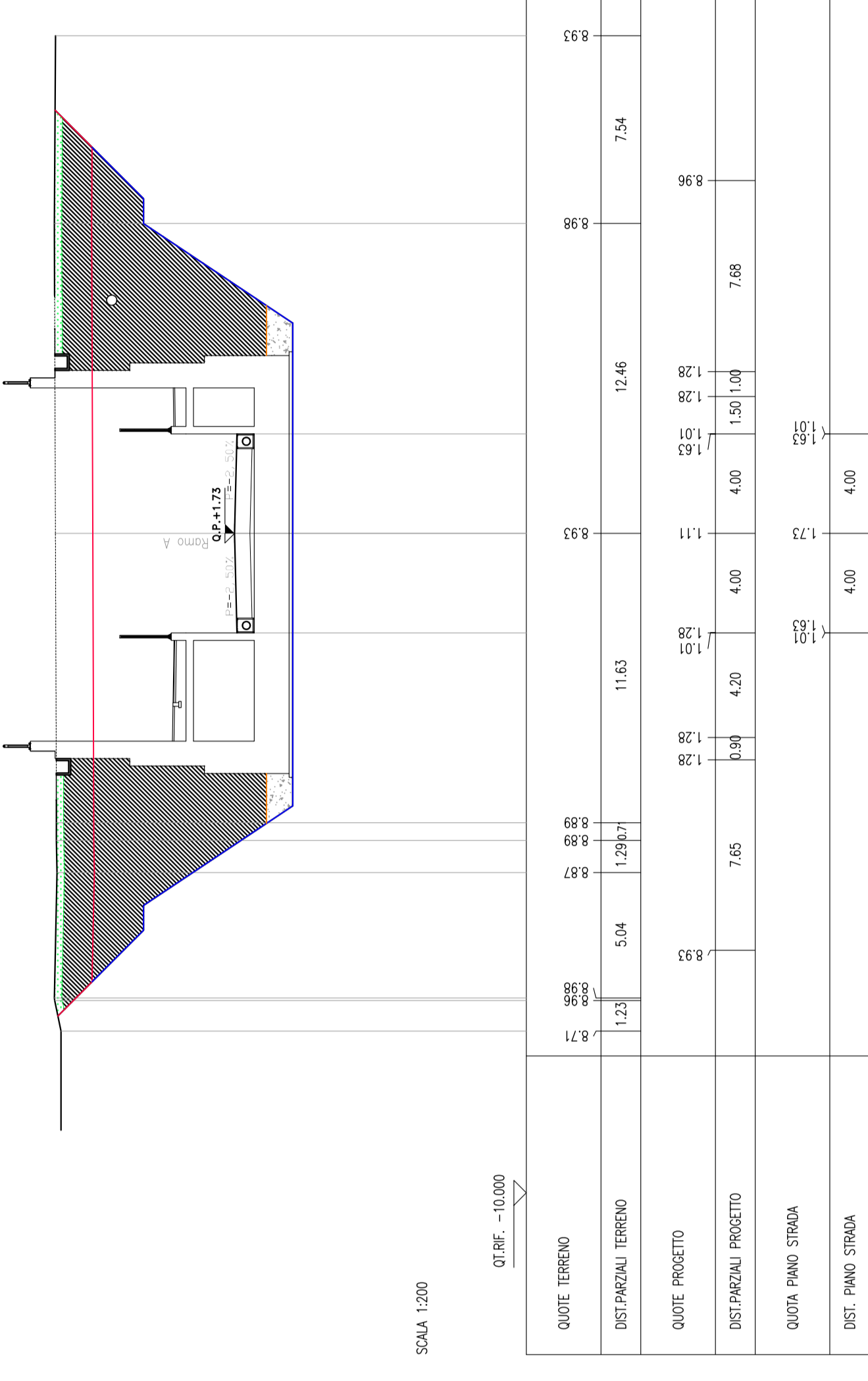
SCALA 1:200

SEZIONE N. 9
DI PROGETTO: 1,002
DIST.PREC.: 20,000
DIST.SACC.: 20,000

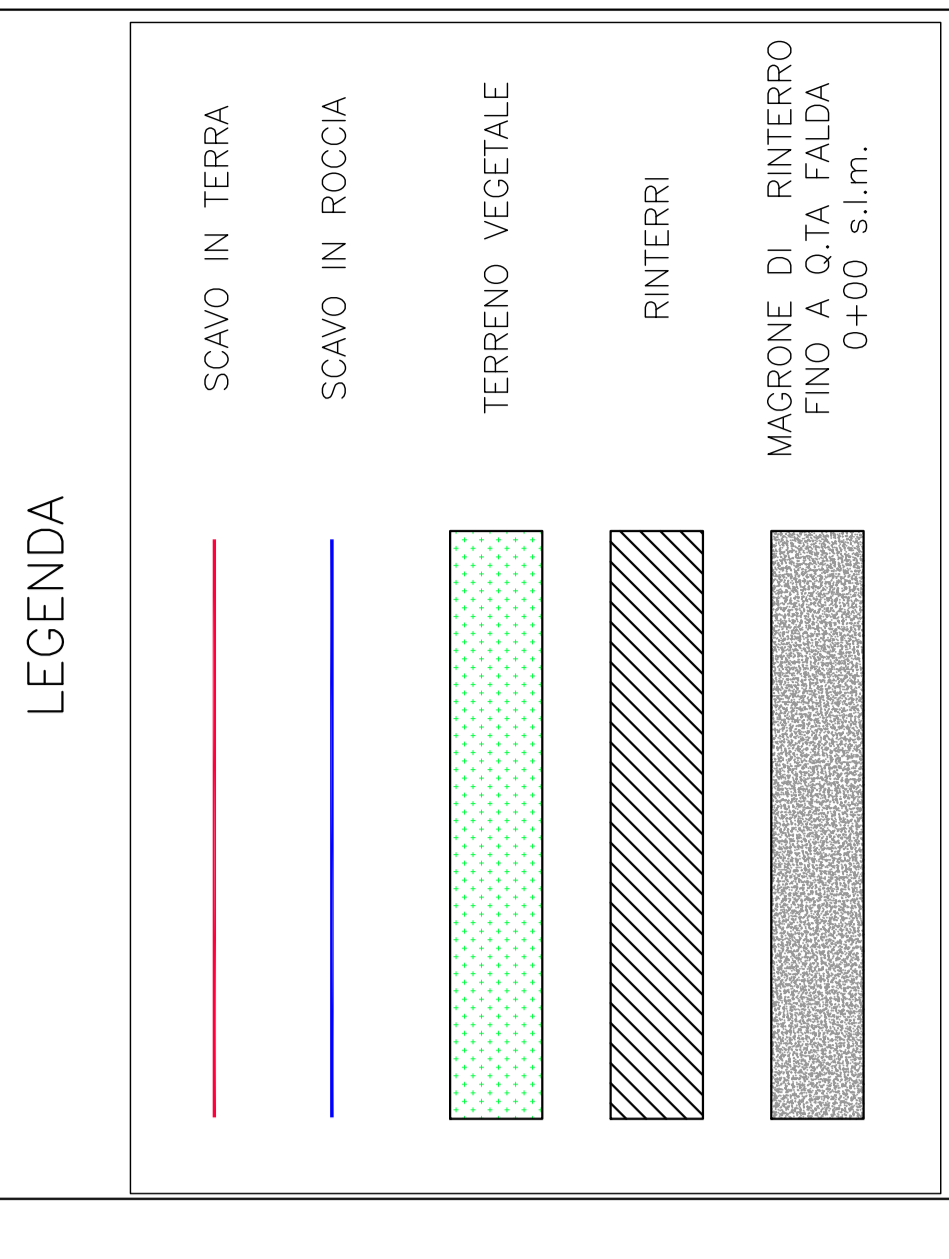


SCALA 1:200

SEZIONE N. 10
DI PROGETTO: 1,233
DIST.PREC.: 20,000
DIST.SACC.: 20,000



SCALA 1:200



Project information block containing logos for IRI (Istituto Nazionale per lo Sviluppo Industriale) and ITALFER (Gruppo Imobiliario Romano). It lists the project name 'RIASSETTO NODO DI BARI', the client 'NUOVA VIABILITA', and the location 'Sezioni trasversali Roma A - Tav. 1 di 2'. It also includes a table with project details like 'COMMESSA', 'LOTTO FASE', 'ENTE TIPO DOC.', 'OPERASUBCLINA', 'PROGR.', 'REV.', and a table for 'Rev.' with columns for 'Descrizione', 'Data', 'Verificato', and 'Approvato'.