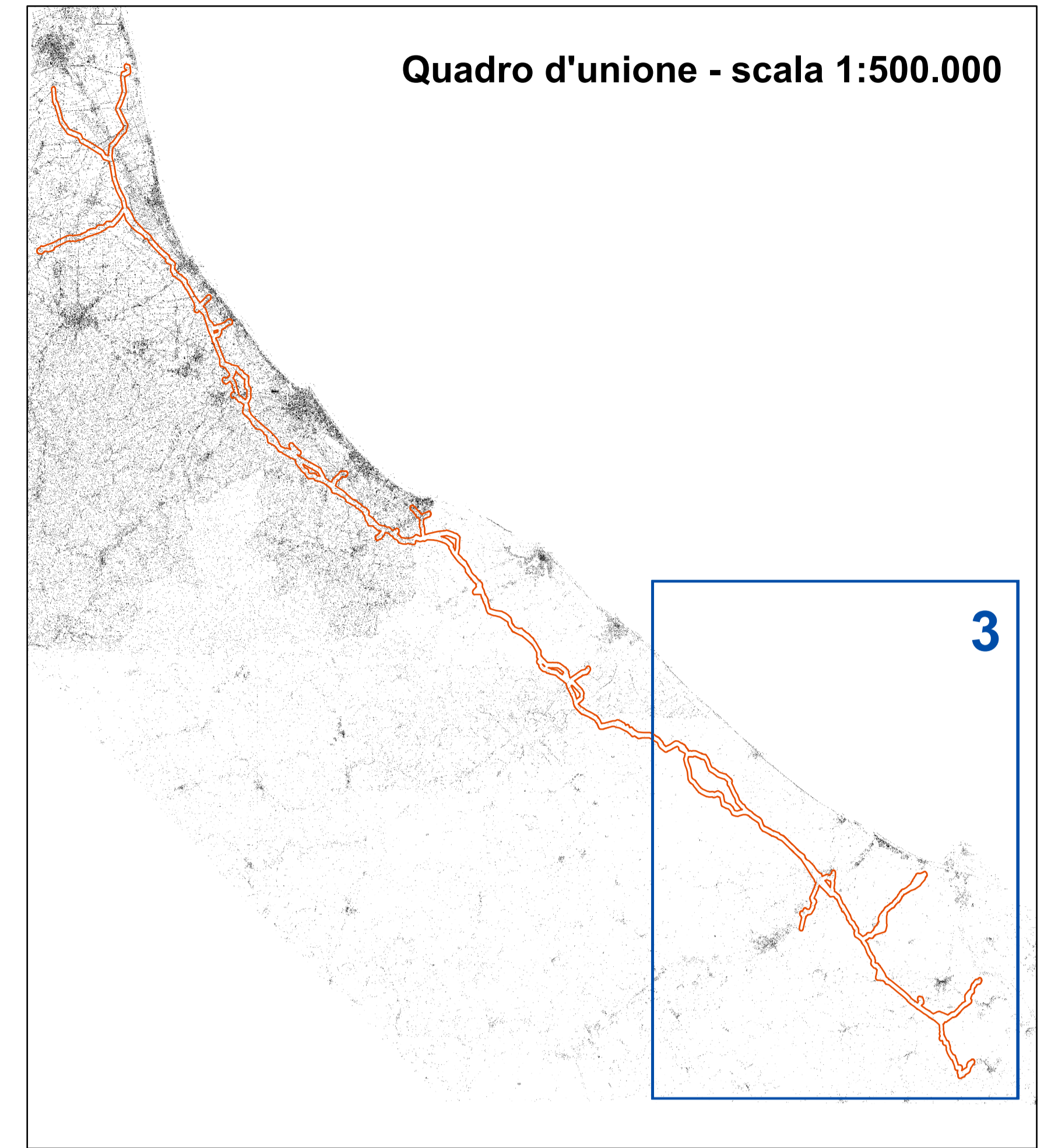









CARTA DELLE CATEGORIE TOPOGRAFICHE



scala 1:50.000



Legenda

-  Tracciato principale in progetto
-  Ricollegamento/rifacimento in progetto
-  Tracciato principale in dismissione
-  Linee secondarie in dismissione
-  Linea esistente da mantenere in esercizio

Categorie topografiche

-  T1
-  T2

