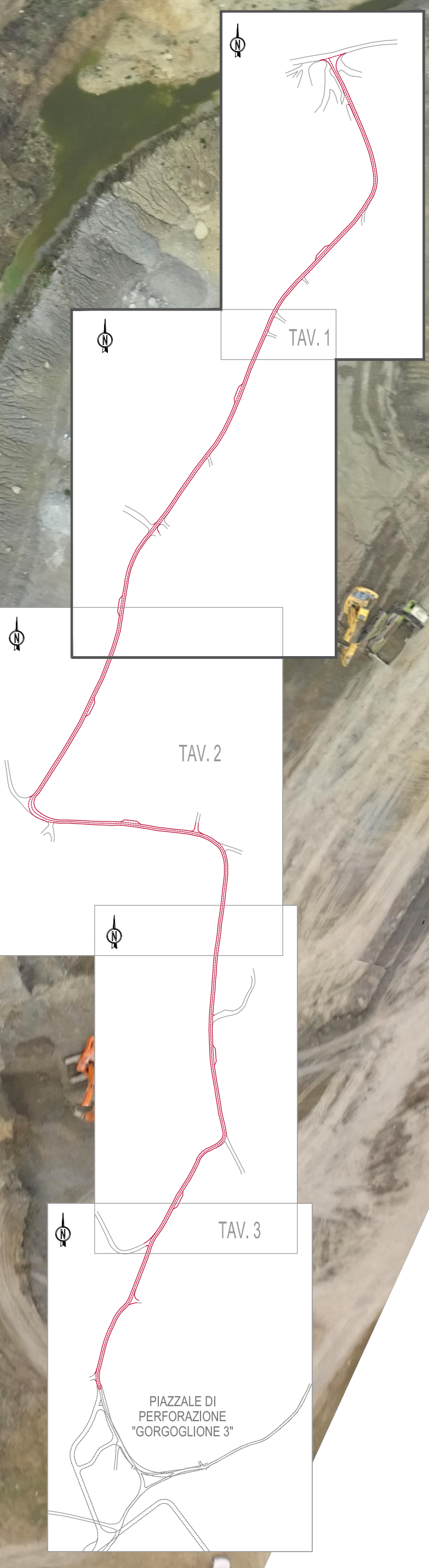


INTERVENTI DI SISTEMAZIONE DEI VERSANTI E DELLE SCARPATE "TRATTO A" - L=70.00 m



00	30/06/2017	IFC	Issued For Comments	COLLUZZI	AZZAROLI	BIONDI
Revision	Date	Status	Revision memo	Issued by	Checked by	Approved by
			  			
<p style="font-size: small;">This document is the property of TOTAL and shall not be disclosed to third parties or reproduced without permission of the owner. This document has been generated by an Electronic Document Management System. When printed it is considered as a for information only copy. The controlled copy is the screen version and it is the holder's responsibility that he/she holds the latest valid version.</p>						
PROGETTO ESECUTIVO						
STRADA DI ACCESSO POZZO GG3 ORTOFOTO DI PROGETTO - FOGLIO 1 DI 3						
Doc. Type:	DRW	Syst. / S.Syst.:	NA	Discipline:	CIV	Electronic Format:
Document N.:	IT-TPR-WS-RPA-002210_rev00	Rev	00	Scale:	1/500	IT-TPR-WS-RPA-002210_rev00.dwg
Contractor Document N.:	IT-TPR-WS-RPA-002210_rev00.dwg	Format	A0	Folio:	1 of 3	