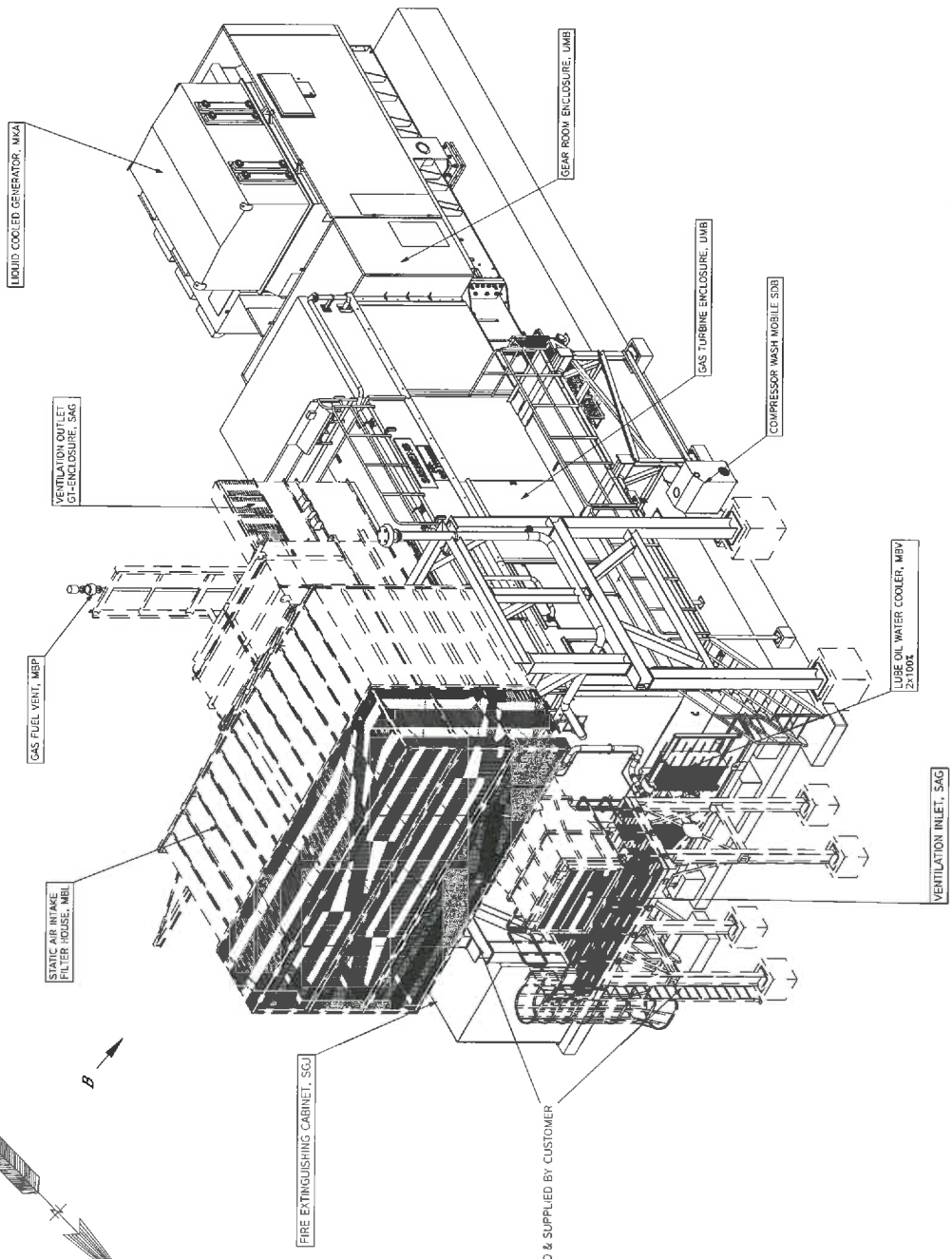
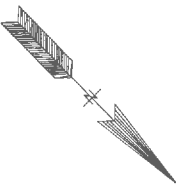


PLANT NORTH



ALL 10-3

| ADDITIONAL INFORMATION | |
|----------------------------|-----------|
| FOUNDATION GENERAL LAYOUT | 152912073 |
| FOUNDATION LOADS INTENSITY | 152912074 |
| TERMINAL POINTS | 152912075 |
| AUXILIARY LAYOUT | 152912076 |
| HAZARDOUS AREA LAYOUT | 152912077 |
| REMOVAL & SERVICE LAYOUT | 152912078 |

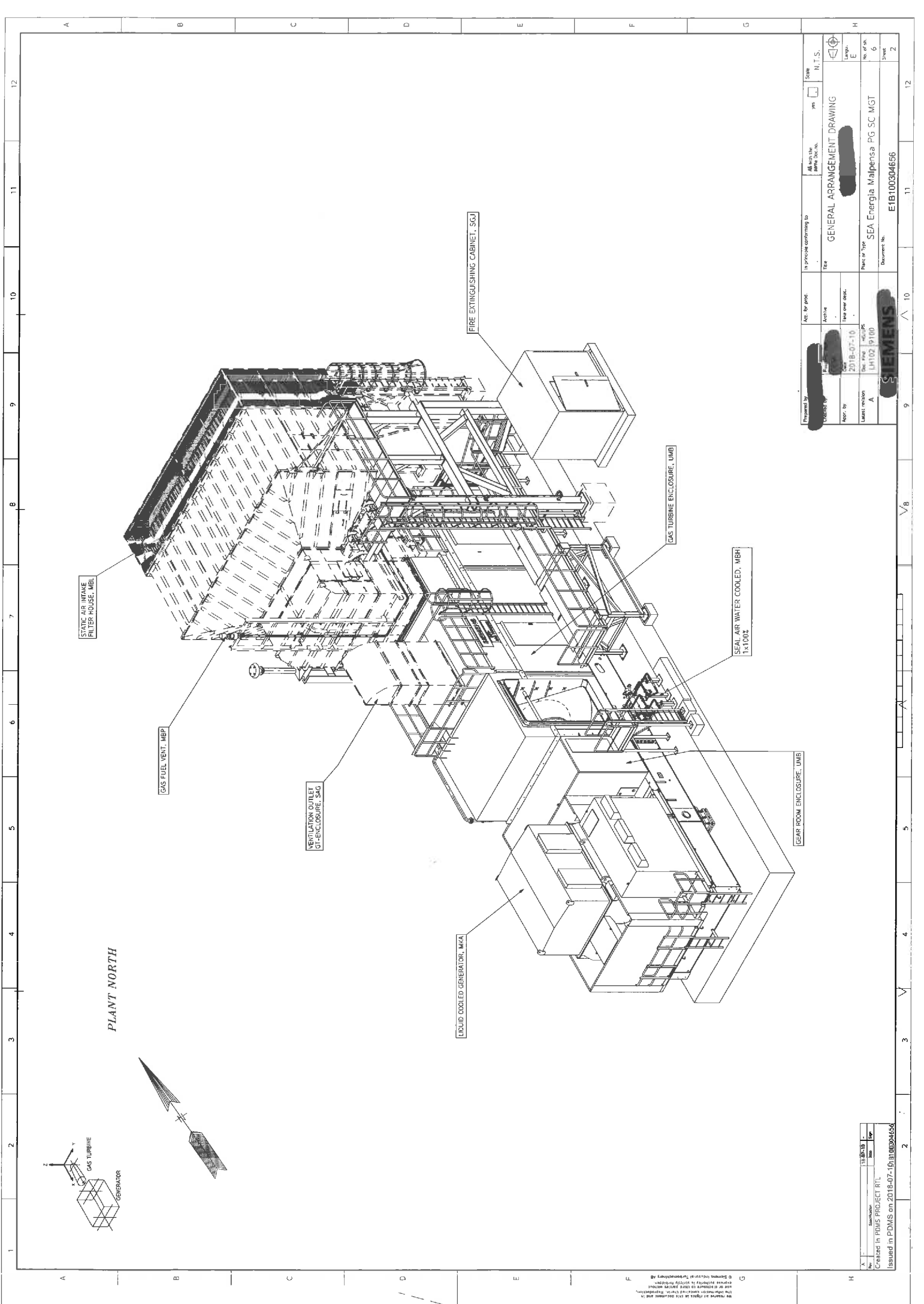
| | | | |
|----------------|--|-----------------------------|--------------------------------|
| Acc. for prod. | yes <input type="checkbox"/> no <input type="checkbox"/> | Scale | N.T.S. |
| Checked by | GENI | GENERAL ARRANGEMENT DRAWING | |
| Appr. by | 2018-07-10 | Lay. E | |
| Letter | A | Part or Type | SEA Energia Malpensa PG SC MGT |
| | | Doc. No. | E1B100304656 |
| | | No. of sh. | 6 |
| | | Sheet | 1 |

NOTES:

- VIEW DIRECTION A SHEET 4
- VIEW DIRECTION B SHEET 5
- VIEW DIRECTION C SHEET 6
- VIEW DIRECTION D SHEET 6

Created in PDMS PROJECT 3D

Siemens Energy is not responsible for the content of this drawing. The user is responsible for the content of this drawing. The user is responsible for the content of this drawing. The user is responsible for the content of this drawing.



PLANT NORTH

| | | | | |
|--------------------------------|--------------------------------|--------------------------------|--------------------------------|--------------------------------|
| Prepared by | Approved by | Checked by | Issue No. | Scale |
| | | | 2018-07-10 | N.T.S. |
| In principle conforming to | | Title | | |
| All with the same doc. no. | | GENERAL ARRANGEMENT DRAWING | | |
| Approved by | Checked by | Issue No. | Scale | |
| | | 2018-07-10 | N.T.S. | |
| Plant of Type | Plant of Type | Plant of Type | Plant of Type | Plant of Type |
| SEA Energia Malpensa PG SC MGT | SEA Energia Malpensa PG SC MGT | SEA Energia Malpensa PG SC MGT | SEA Energia Malpensa PG SC MGT | SEA Energia Malpensa PG SC MGT |
| Document No. | Document No. | Document No. | Document No. | Document No. |
| EIB1003004656 | EIB1003004656 | EIB1003004656 | EIB1003004656 | EIB1003004656 |

| | | | |
|--|--|--|--|
| 18.04.18 | 18.04.18 | 18.04.18 | 18.04.18 |
| Created in PDMS PROJECT RTL | Created in PDMS PROJECT RTL | Created in PDMS PROJECT RTL | Created in PDMS PROJECT RTL |
| Issued in PDMS on 2018-07-10 in 00004656 | Issued in PDMS on 2018-07-10 in 00004656 | Issued in PDMS on 2018-07-10 in 00004656 | Issued in PDMS on 2018-07-10 in 00004656 |

Siemens AG, Energy Sector, Power Generation Division, Siemensstrasse 1, 90474 Regensburg, Germany