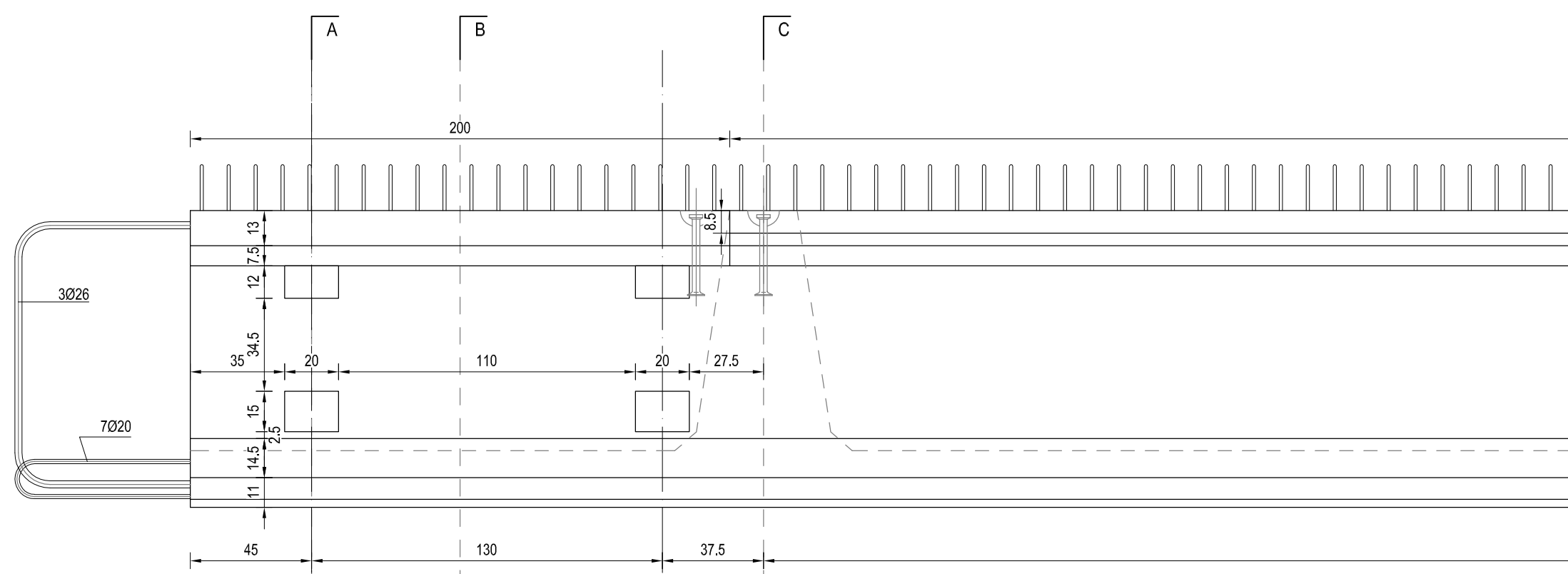
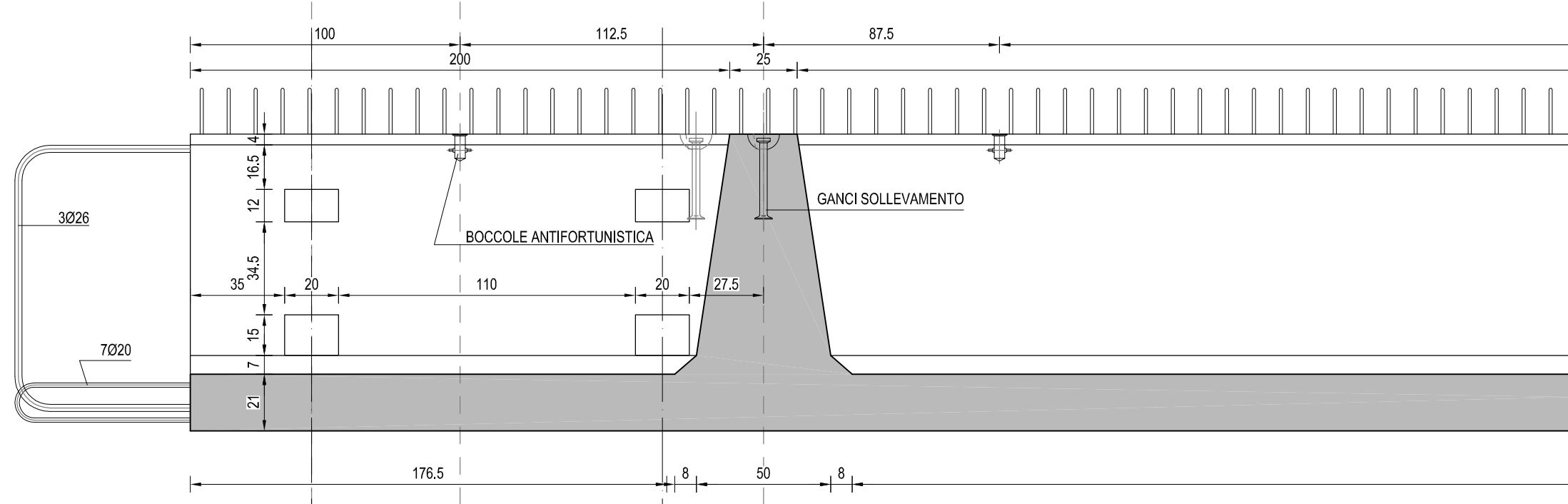


TRAVE TIPO "A"

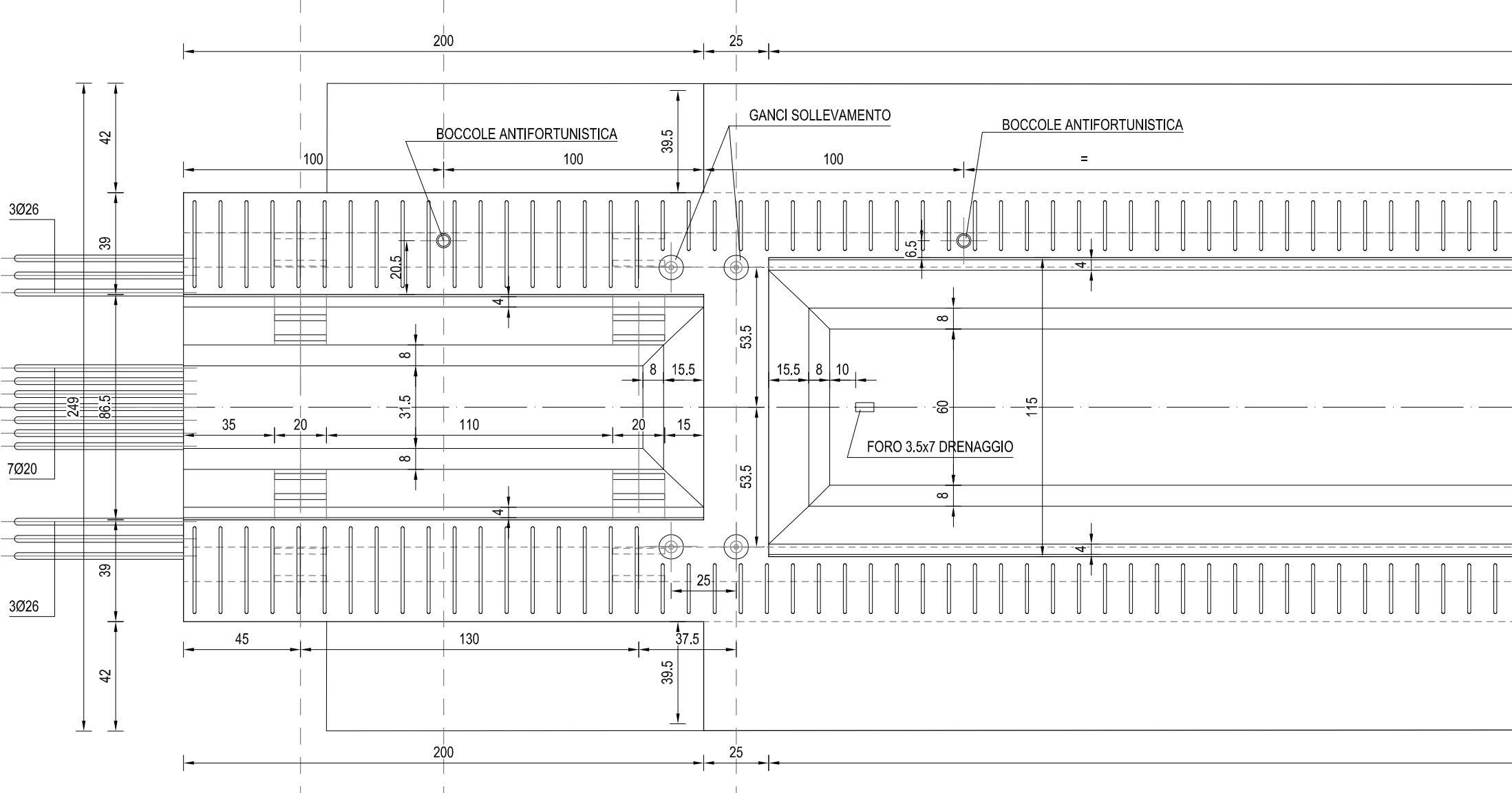
PROSPETTO
SCALA 1:20



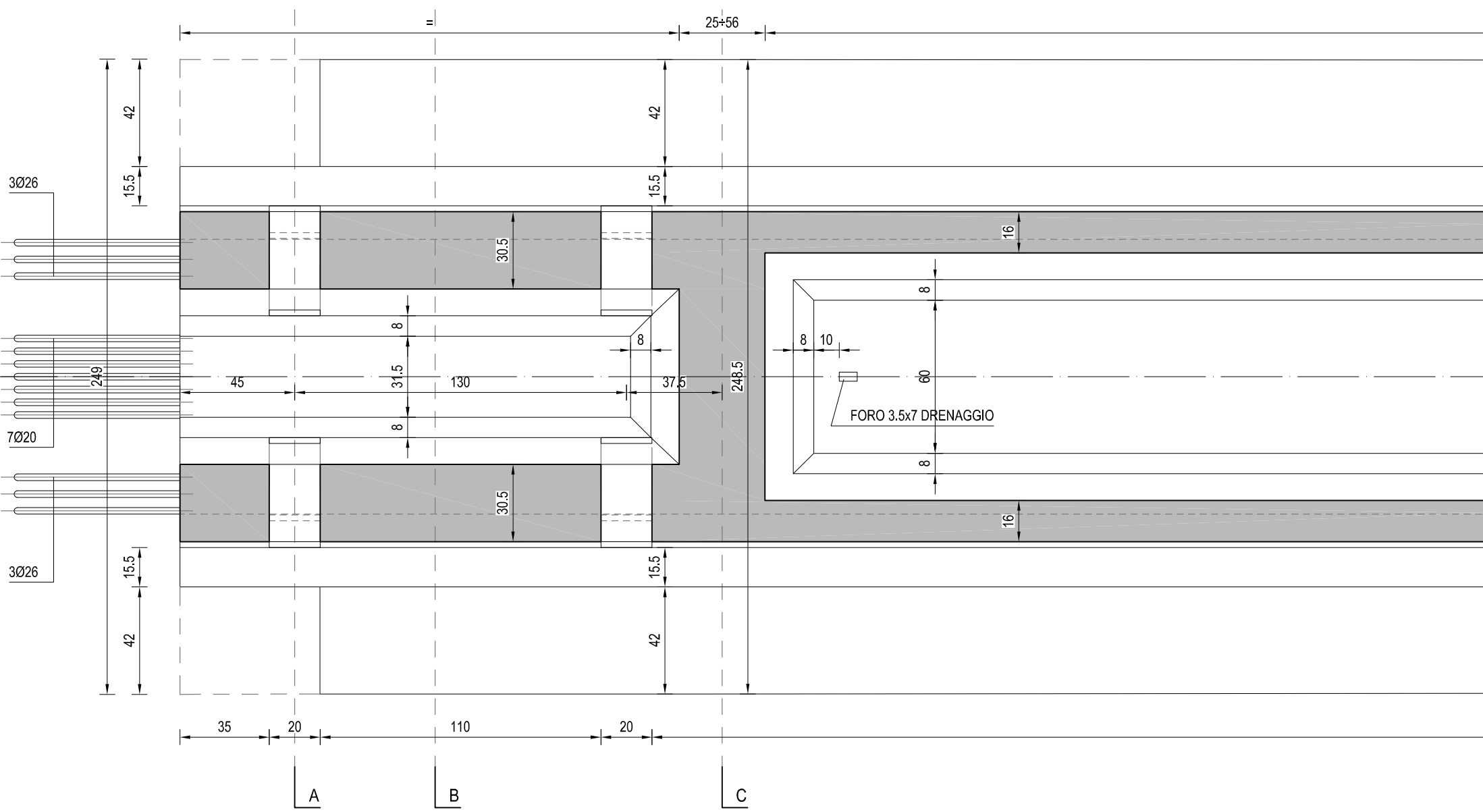
SEZIONE F-F
SCALA 1:20



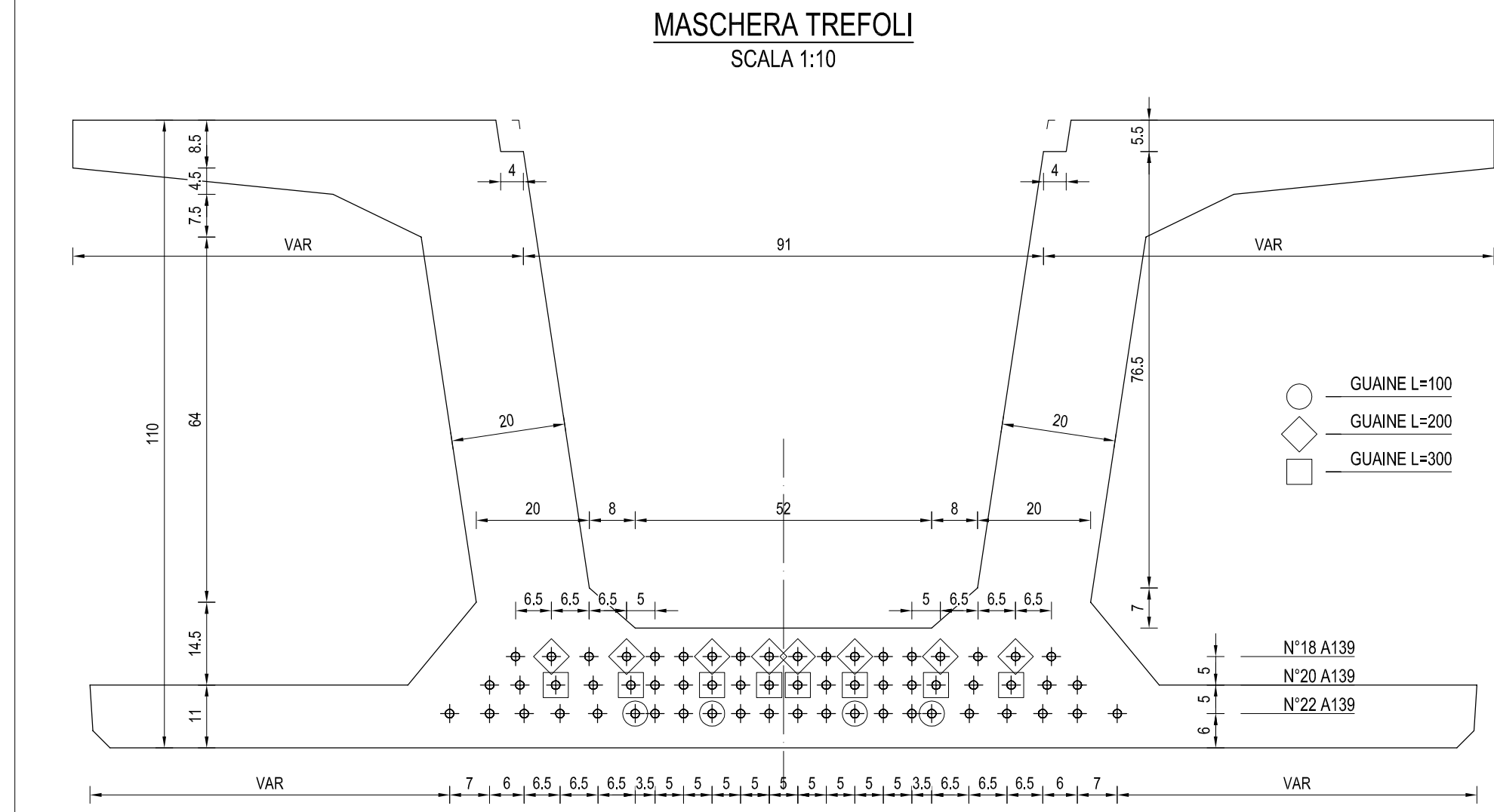
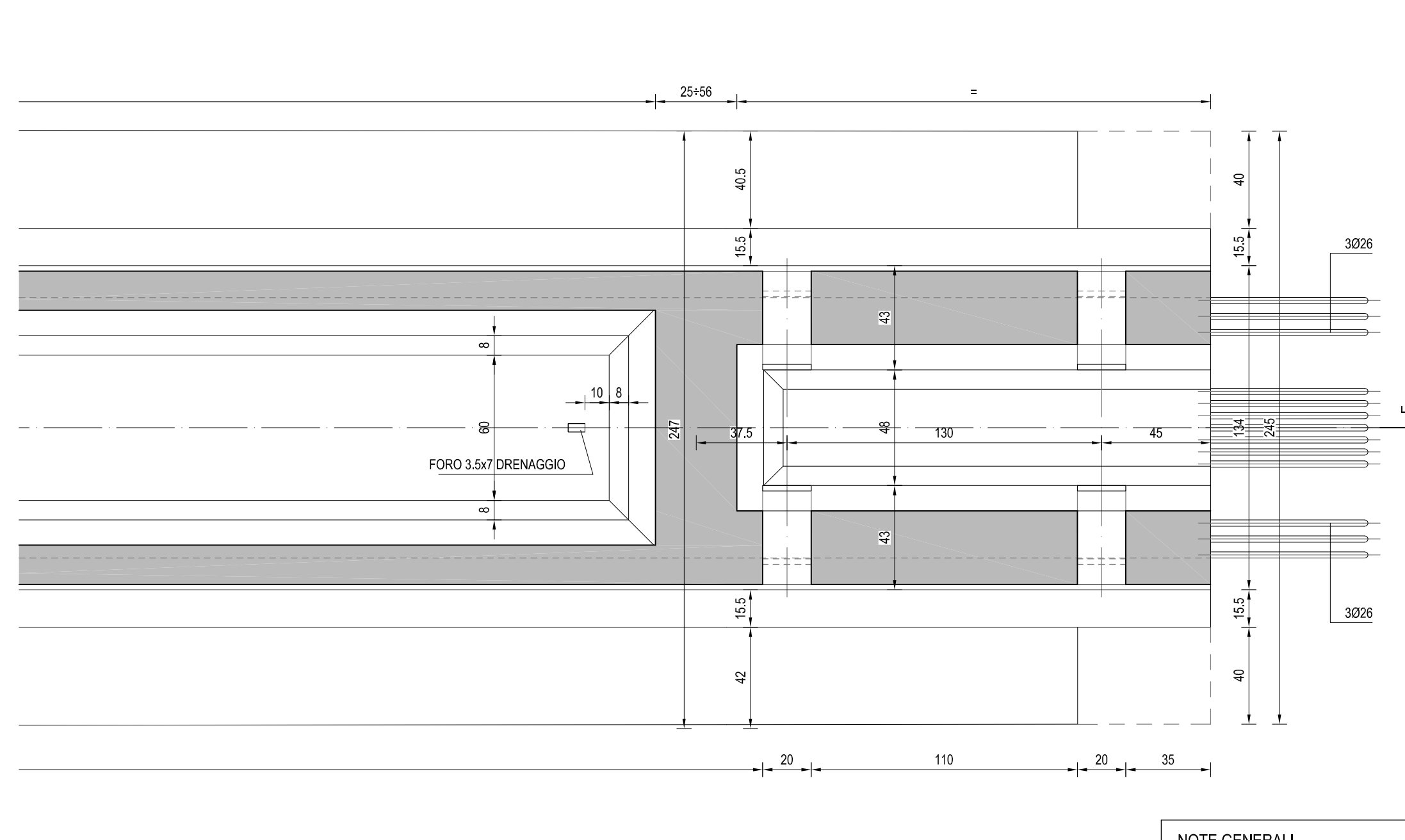
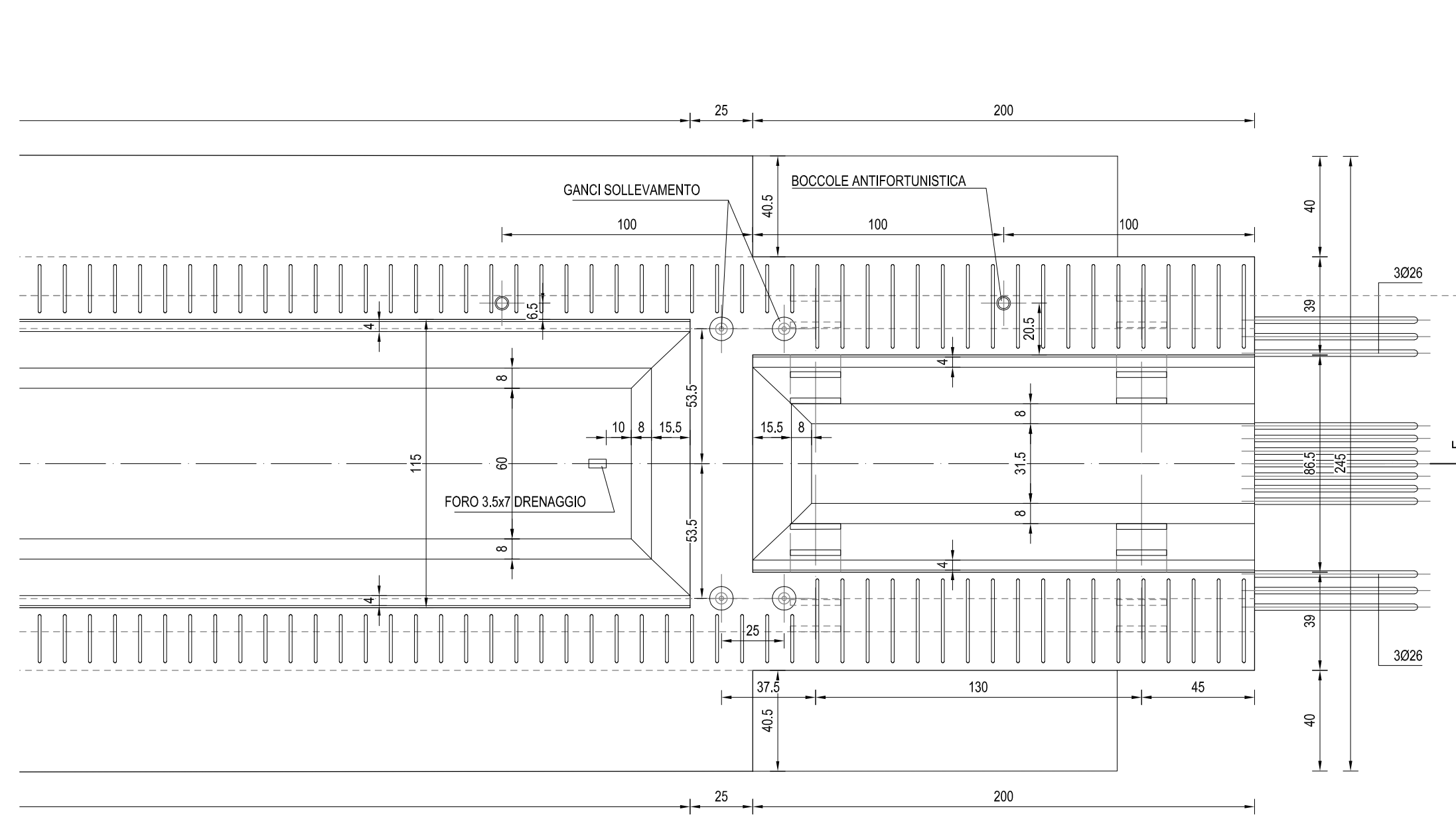
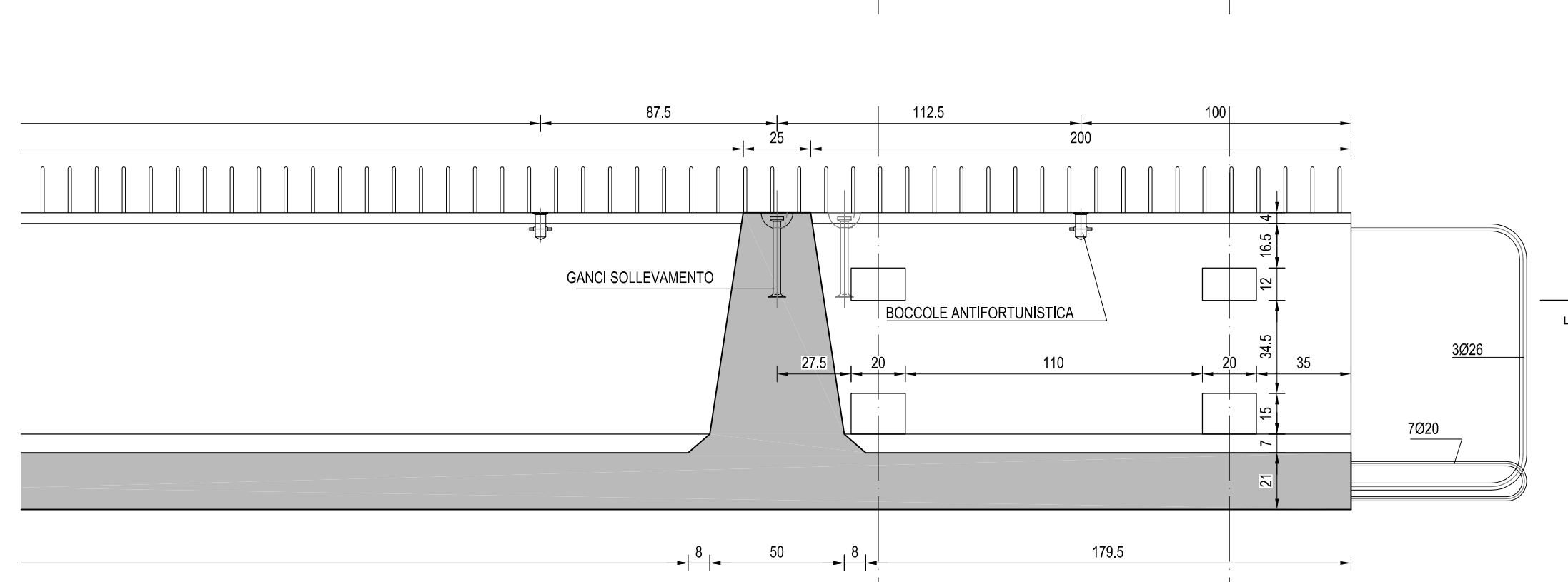
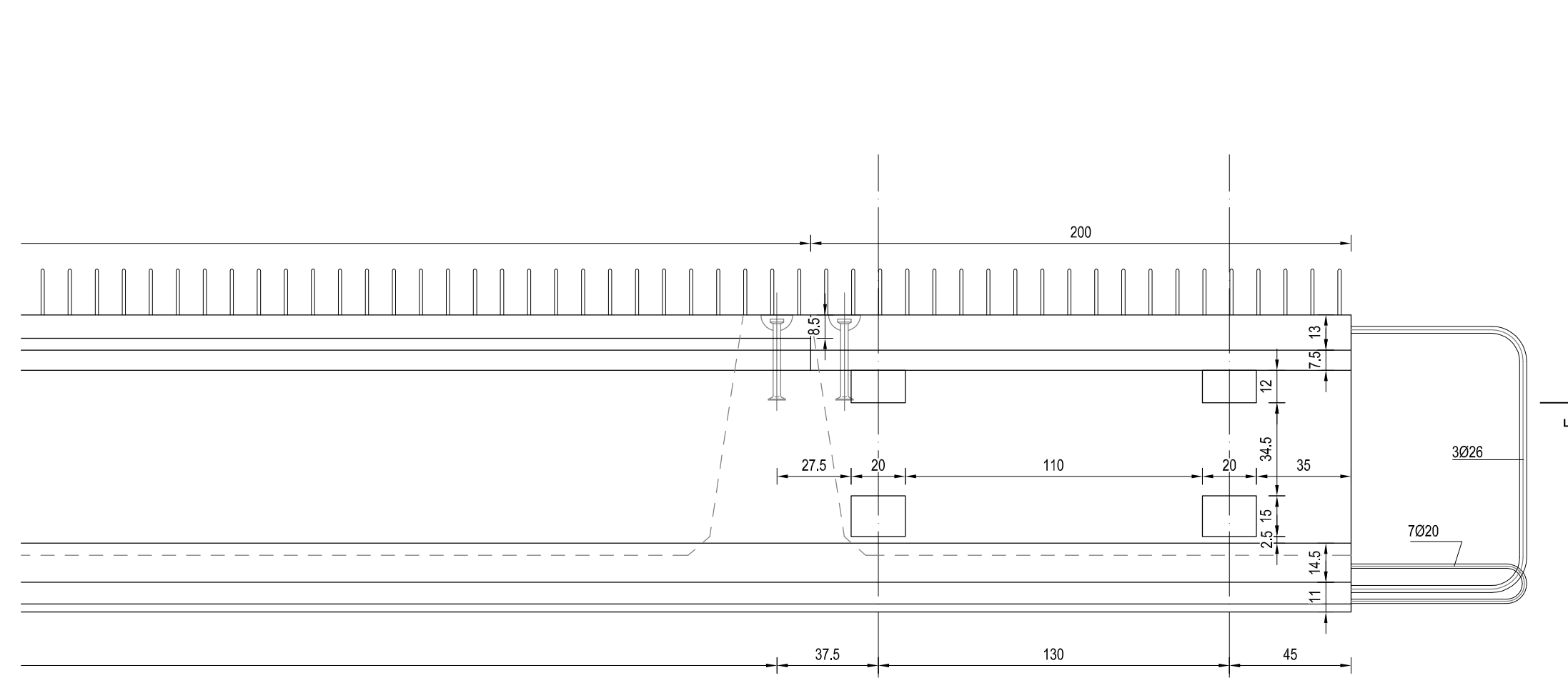
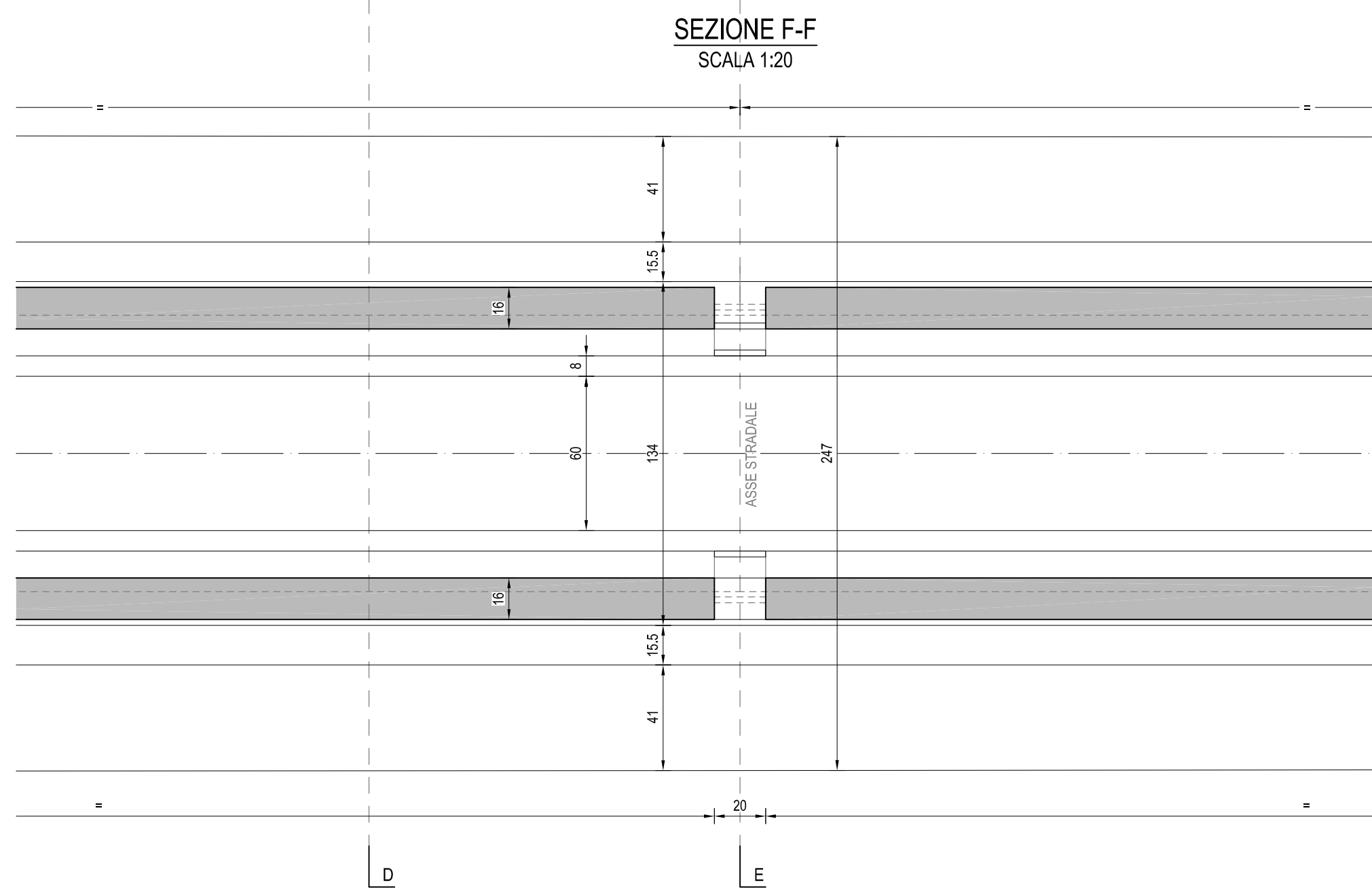
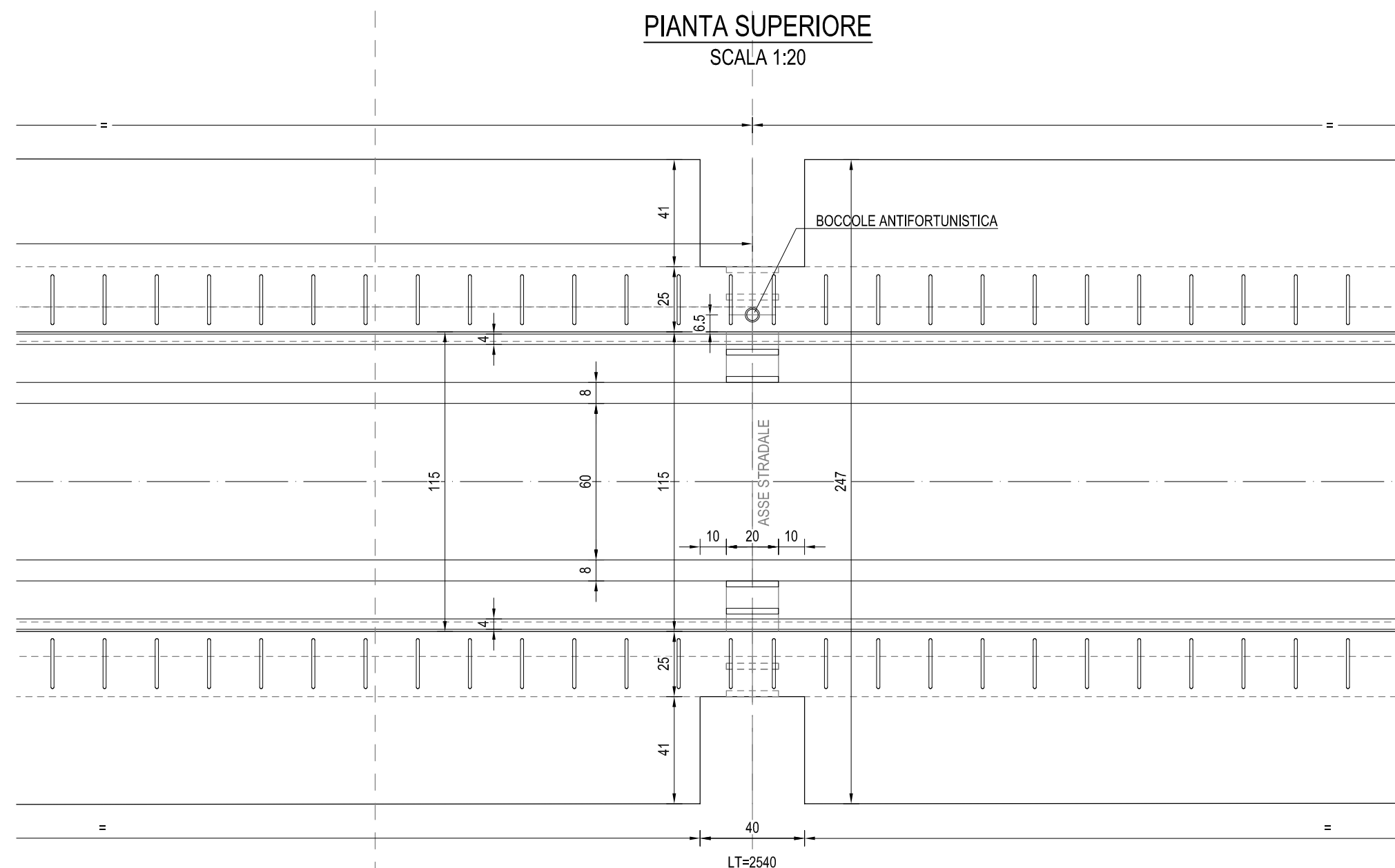
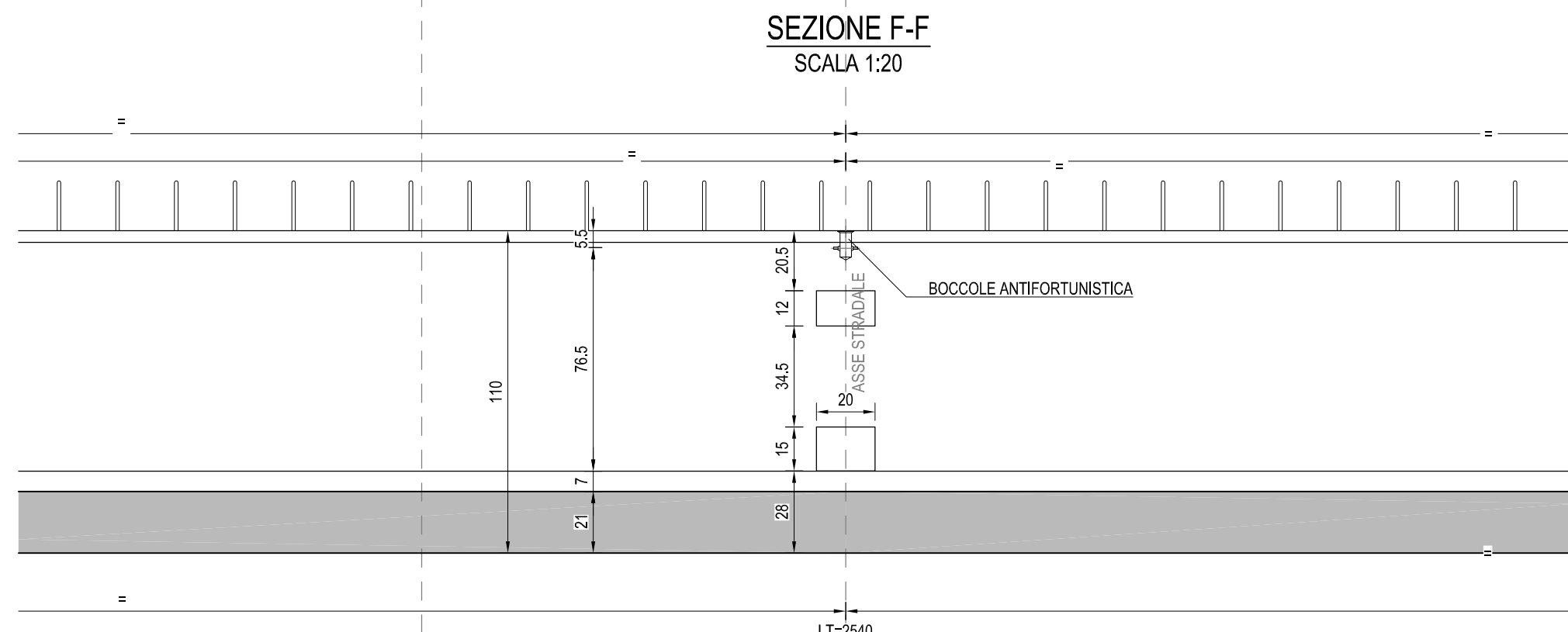
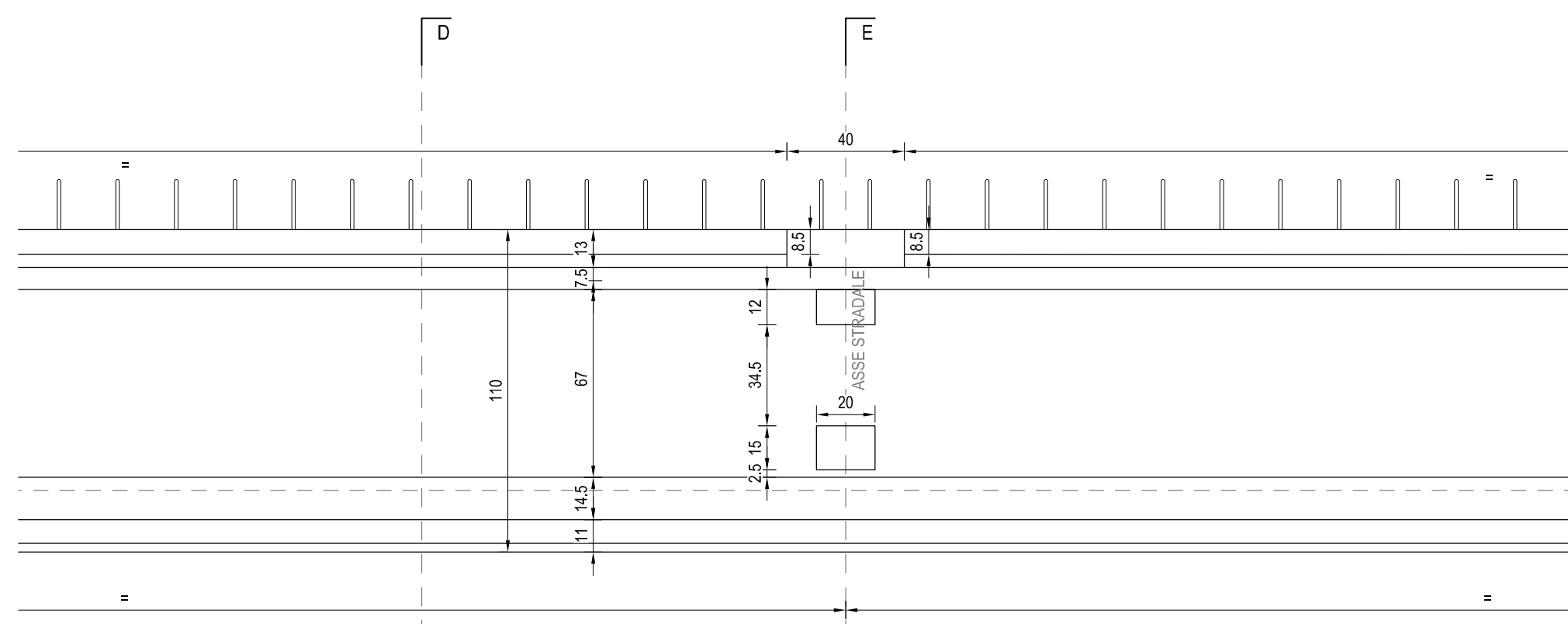
PIANTA SUPERIORE
SCALA 1:20



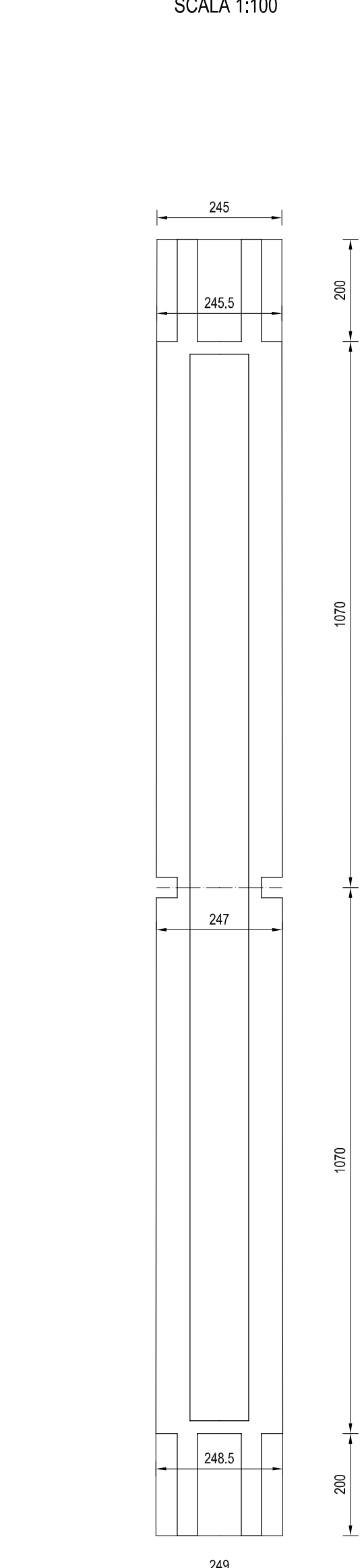
SEZIONE F-F
SCALA 1:20



SEZIONE F-F
SCALA 1:20



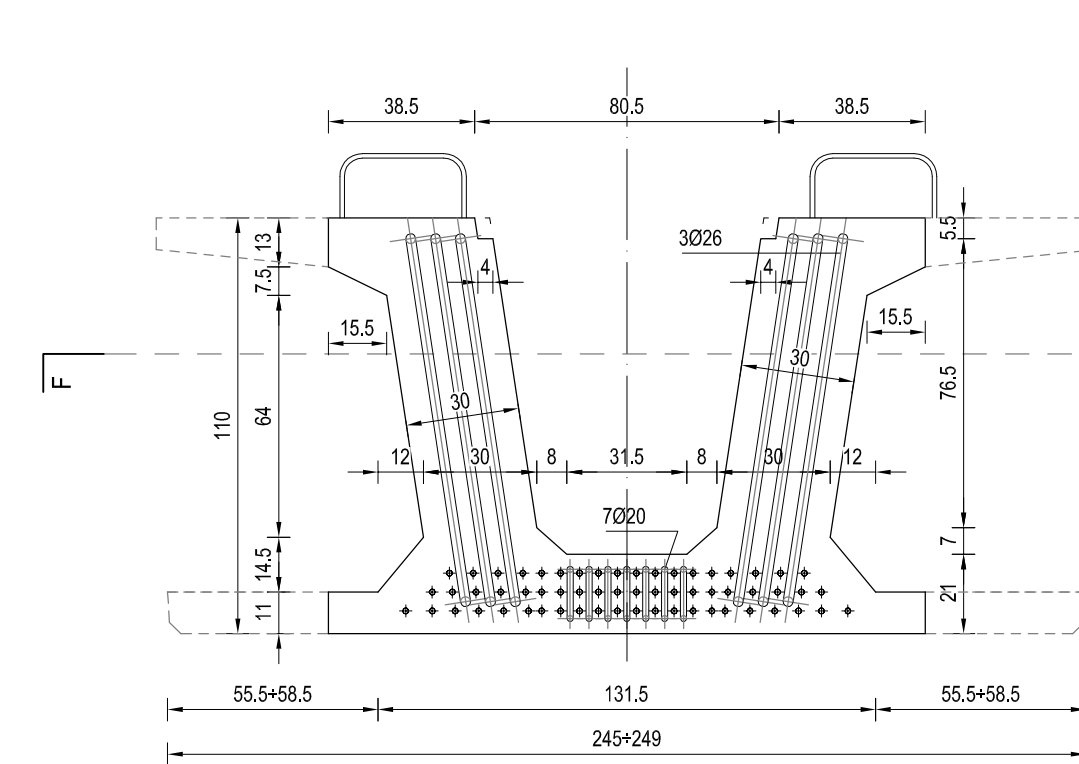
SCHEMA SAGOMA TRAVE
SCALA 1:100



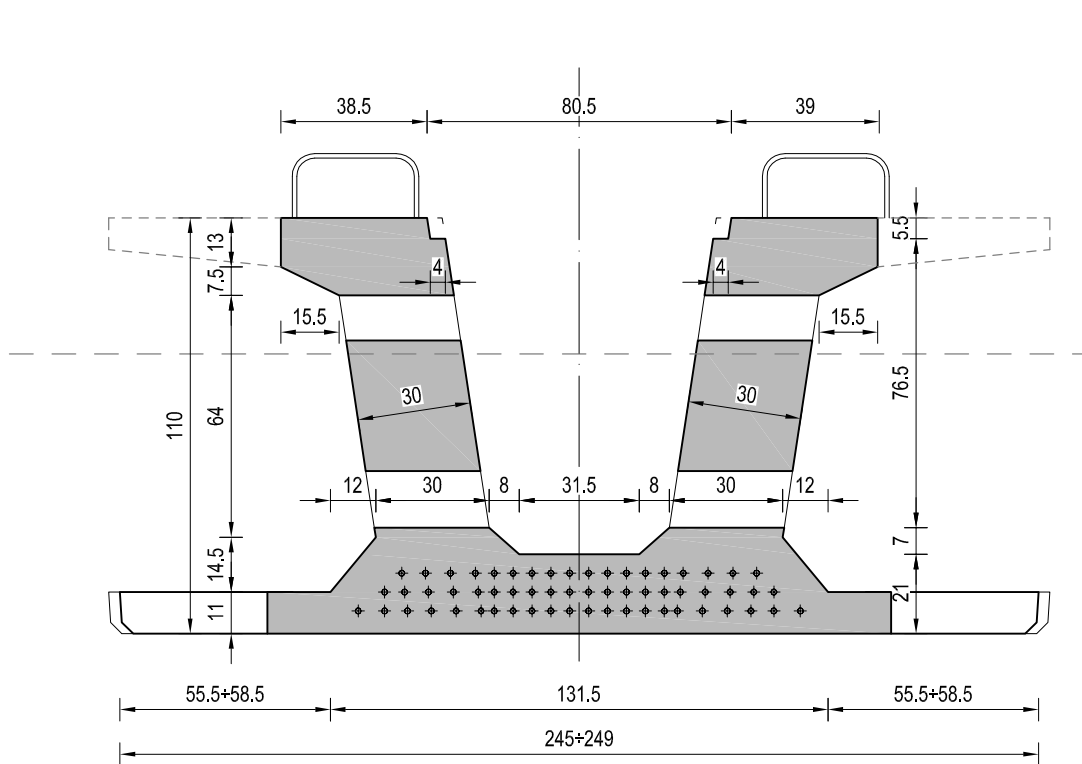
DIMENSIONI TRAVI
TIPO LT (cm)
"A" 2540

NOTE GENERALI
1) TUTTE LE MISURE SONO IN CM, TUTTE LE QUOTE ALTIMETRICHE SONO S.L.M.

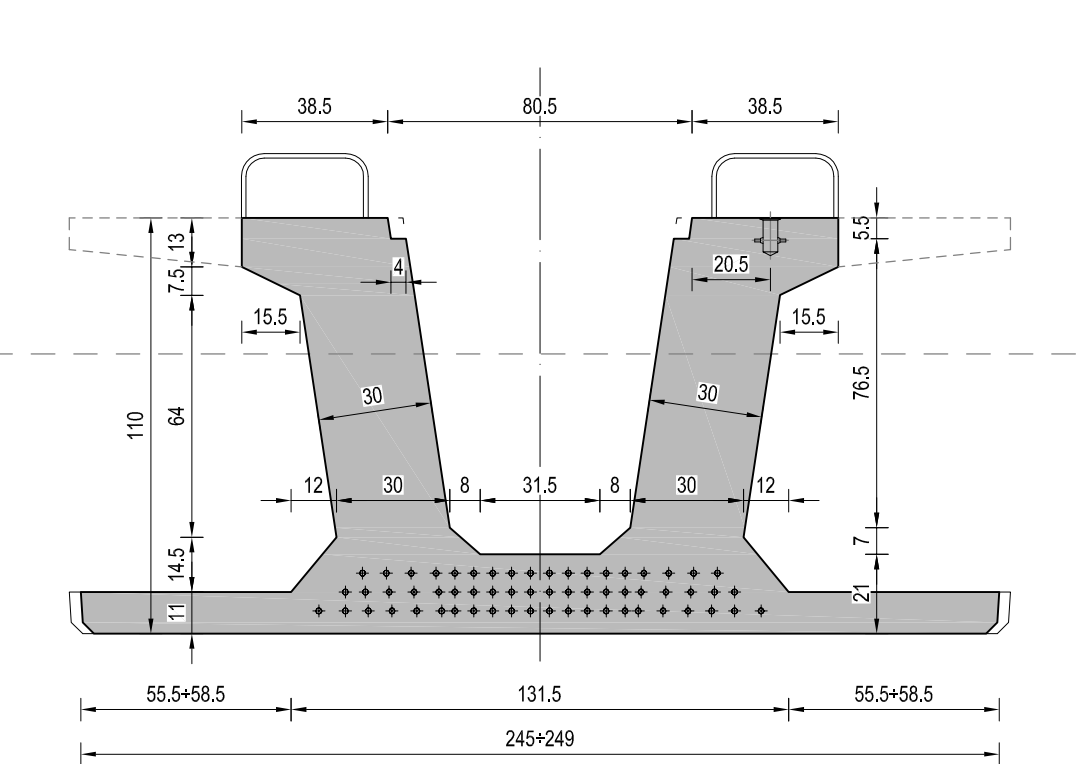
PROSPETTO TESTATA
SCALA 1:20



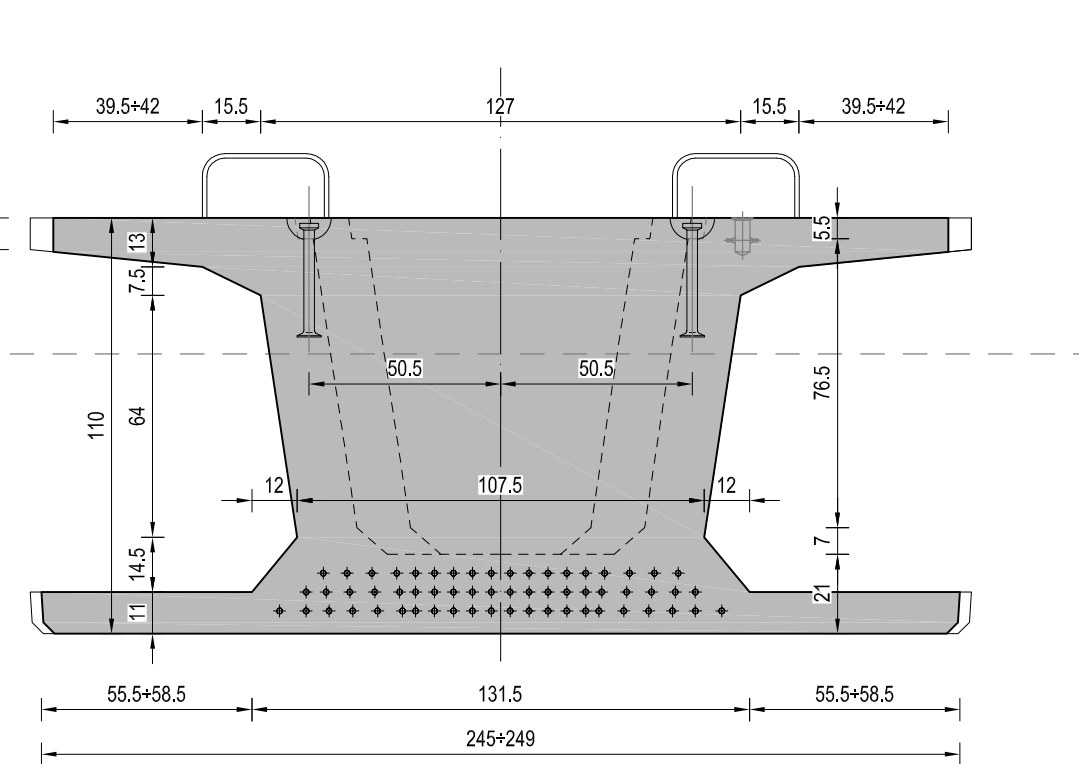
SEZIONE A-A
SCALA 1:20



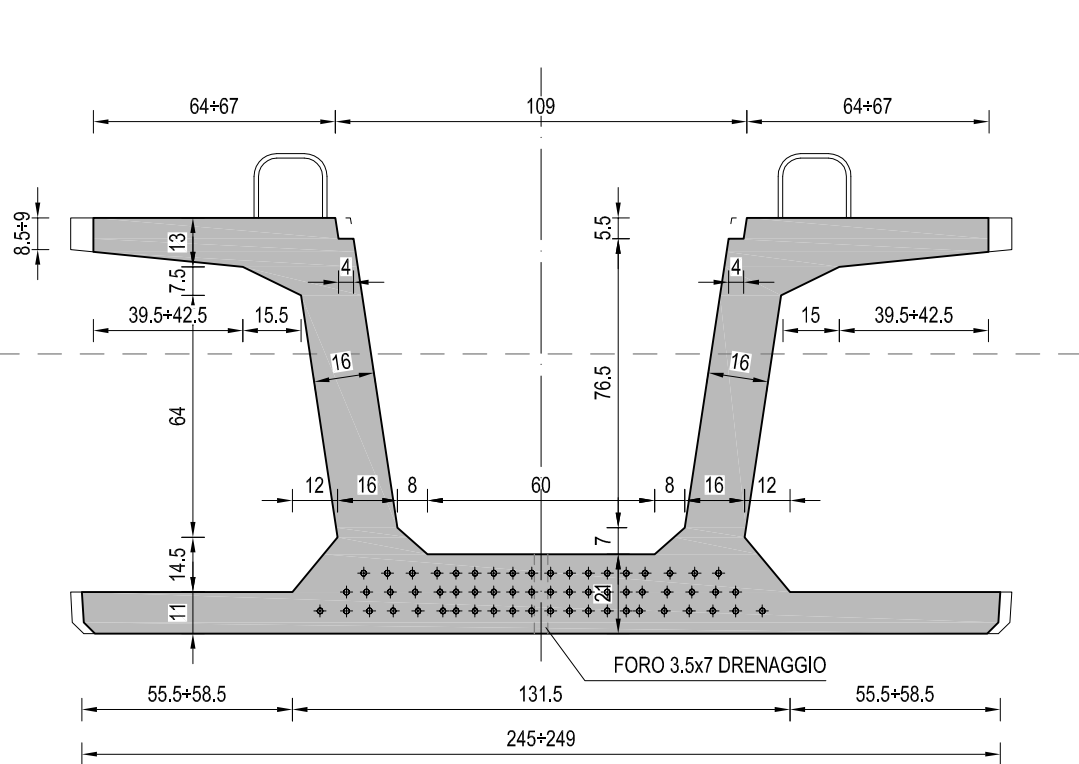
SEZIONE B-B
SCALA 1:20



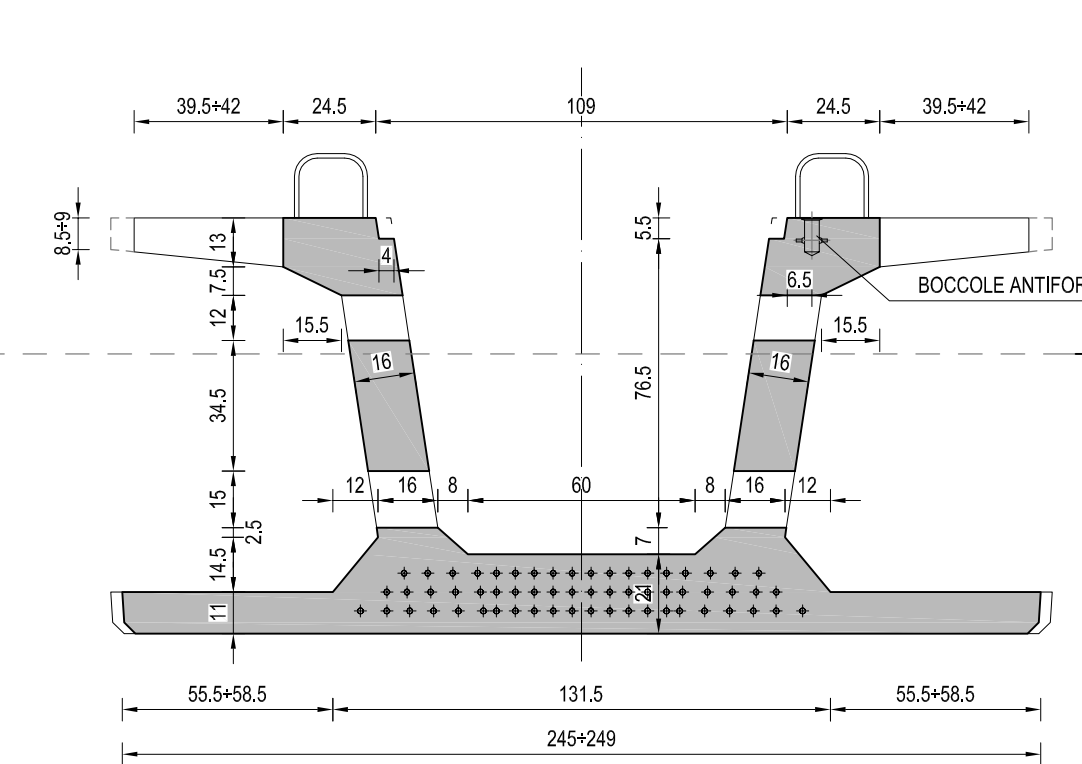
SEZIONE C-C
SCALA 1:20



SEZIONE D-D
SCALA 1:20



SEZIONE E-E
SCALA 1:20



Project Number XXX

Accordo di Programma (Approvato con D.P.G.R. del 22.05.2009 N.5095) PRIMO ATTO INTEGRATIVO (Approvato con D.P.G.R. del 29.03.2010 N.3148)

POTENZIAMENTO DELLA S.P. N.103 "ANTICA DI CASSANO" 1° LOTTO - 2° STRALCIO TRATTA B

PROGETTO ESECUTIVO

Titolo elaborato: OPERE D'ARTE MAGGIORI GALLERIE ARTIFICIALI GA01 - Galleria artificiale Est Travi impalcato: carpenteria

Autore: SCALABRIN, Martignoni, Rinaldi

Scale: varie

Data: Maggio 2015

Revisori: A SCALABRIN, B SCALABRIN, C SCALABRIN, D SCALABRIN

Approvato: RINALDI

DATA: VERIFICA - SETT. 2015, VERIFICA - LUG. 2016

Progettazione:

Visito: WESTFIELD MILAN S.p.a. Case Giacomo Matteotti, 10 20121 Milano