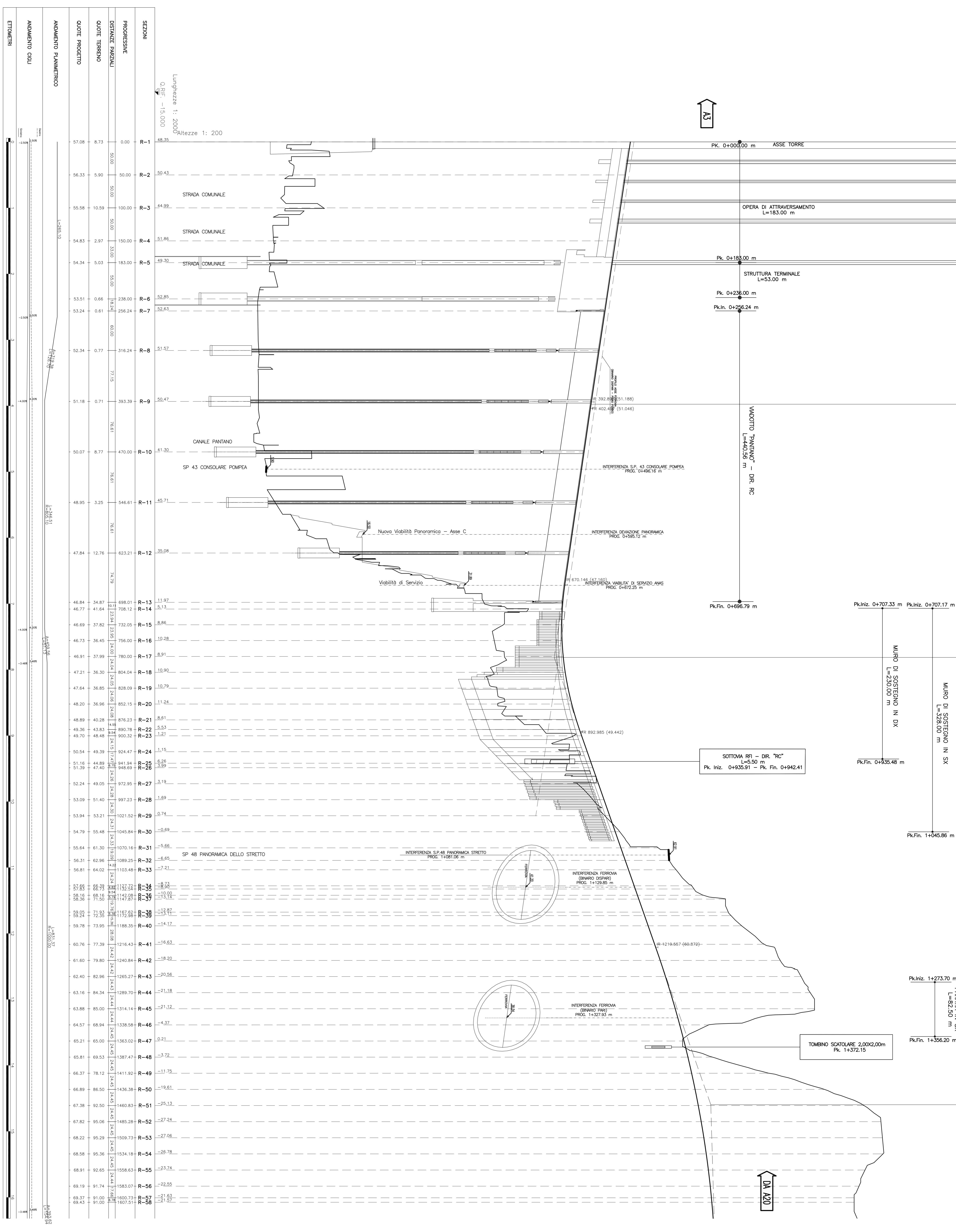


PROFLO ASSE DIREZIONE REGGIO CALABRIA DA PK. 0+000.00 m A PK. 1+631.97 m

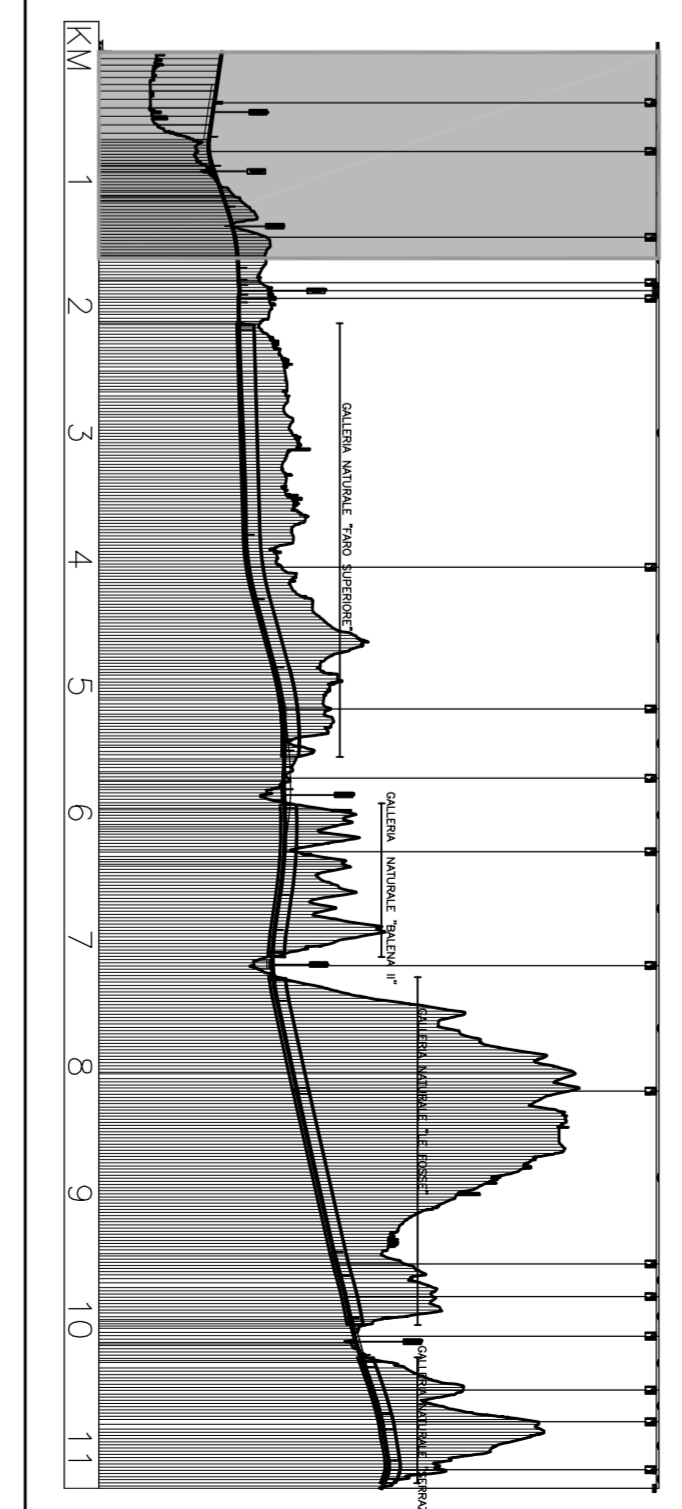
NOTE GENERALI

PROVINCIA: MESSINA
 COMUNE: MESSINA
 LUNGLIEVE: 0+000.00 - 0+200.00, 0+200.00 - 0+400.00, 0+400.00 - 0+600.00, 0+600.00 - 0+800.00, 0+800.00 - 1+000.00, 1+000.00 - 1+200.00, 1+200.00 - 1+400.00, 1+400.00 - 1+600.00, 1+600.00 - 1+631.97

PK	T1	T2	SV	SP
0+000.00	0.000	0.000	0.000	0.000
0+200.00	0.000	0.000	0.000	0.000
0+400.00	0.000	0.000	0.000	0.000
0+600.00	0.000	0.000	0.000	0.000
0+800.00	0.000	0.000	0.000	0.000
1+000.00	0.000	0.000	0.000	0.000
1+200.00	0.000	0.000	0.000	0.000
1+400.00	0.000	0.000	0.000	0.000
1+600.00	0.000	0.000	0.000	0.000
1+631.97	0.000	0.000	0.000	0.000



SEZIONI	PROGRESSIVE	DISTANZE PARALLELE	QUOTE TERRENO	QUOTE PROGETTO	ANDAMENTO PLANIMETRICO	ANDAMENTO CIGLI	ETTOGNERI
R-1	48.35	0.00	57.08	8.73			
R-2	50.43	50.00	56.33	5.90			
R-3	44.92	100.00	55.58	10.59			
R-4	51.86	150.00	54.83	2.97			
R-5	49.30	200.00	54.34	5.03			
R-6	52.85	250.00	53.51	0.66			
R-7	52.63	300.00	53.24	0.61			
R-8	51.52	350.00	52.34	0.77			
R-9	50.47	400.00	51.18	0.71			
R-10	41.30	450.00	50.07	8.77			
R-11	45.71	500.00	48.95	3.25			
R-12	35.08	550.00	47.84	12.76			
R-13	11.97	600.00	46.84	34.87			
R-14	5.12	650.00	46.77	41.64			
R-15	8.86	700.00	46.69	37.82			
R-16	10.28	750.00	46.73	36.45			
R-17	8.91	800.00	46.91	37.99			
R-18	10.90	850.00	47.21	36.30			
R-19	10.79	900.00	47.64	36.85			
R-20	17.24	950.00	48.20	36.96			
R-21	8.61	1000.00	48.89	40.28			
R-22	5.53	1050.00	49.36	43.83			
R-23	1.21	1100.00	49.70	46.48			
R-24	1.15	1150.00	50.54	49.39			
R-25	5.26	1200.00	51.16	44.89			
R-26	3.99	1250.00	51.39	47.40			
R-27	3.19	1300.00	52.24	49.05			
R-28	1.69	1350.00	53.09	51.40			
R-29	0.74	1400.00	53.94	53.21			
R-30	-0.69	1450.00	54.79	55.48			
R-31	-0.66	1500.00	55.64	61.30			
R-32	-5.65	1550.00	56.31	62.96			
R-33	-7.21	1600.00	56.81	64.02			
R-34	-8.81	1650.00	57.85	66.04			
R-35	-10.00	1700.00	58.16	66.15			
R-36	-11.15	1750.00	58.36	66.15			
R-37	-11.15	1800.00	59.05	71.72			
R-38	-11.15	1850.00	59.24	71.72			
R-39	-11.15	1900.00	59.78	73.95			
R-40	-14.17	1950.00	60.76	77.39			
R-41	-16.83	2000.00	61.60	79.80			
R-42	-18.20	2050.00	62.40	82.96			
R-43	-20.86	2100.00	63.16	84.34			
R-44	-21.18	2150.00	63.88	85.00			
R-45	-21.12	2200.00	64.57	88.94			
R-46	-4.32	2250.00	65.21	85.00			
R-47	0.21	2300.00	65.81	89.53			
R-48	-3.72	2350.00	66.37	89.53			
R-49	-11.75	2400.00	66.37	78.12			
R-50	-19.81	2450.00	66.89	86.50			
R-51	-29.13	2500.00	67.38	92.50			
R-52	-27.24	2550.00	67.82	95.06			
R-53	-27.06	2600.00	68.22	92.62			
R-54	-26.78	2650.00	68.58	95.36			
R-55	-23.74	2700.00	68.91	92.65			
R-56	-22.55	2750.00	69.19	91.74			
R-57	-21.71	2800.00	69.37	91.16			
R-58	-21.71	2850.00	69.43	91.00			



Stretto di Messina
 Società per la progettazione, esecuzione e gestione del collegamento stradale tra Reggio Calabria e Messina
 (Legge n° 103 del 1° gennaio 1971, modificata dal D.Lgs. n° 411 del 24 aprile 2000)

di Messina

EUROINIK S.C.S.P.A.
 IMPRESA S.P.A. MESSINA
 SOCIETA' ITALIANA PER CONDOTTE EVACUATA S.P.A. (Messina)
 COPERTIVITA' MARITTIMA E S.P.A. (Messina)
 SICHIMAVIA - HEVIA HEAVY INDUSTRIES CO. LTD. (Messina)
 A.C.I. S.C.P.A. - CONSORCIO STRADALE (Messina)

PROGETTO DEFINITIVO

COLLEGAMENTI SICILIA
PA0004-FO
 VADO TIRANICO - INFRASTRUTTURA STRADALE/FERROVIARIA
 OPERE CIVILI STRADALI/FERROVIARI
 VADO TIRANICO
 PROFILO LONGITUDINALE CARREGGIATA DIREZIONE REGGIO CALABRIA

PROGETTAZIONE
 CIG 0170101P/F2 I.D. S.I.V.P. C.I.I.V.I. 01.01.01.2.FO.1.200/200
 Data: 20/06/2011
 Firma: [Firma] / [Firma]
 Nome: [Nome] / [Nome]