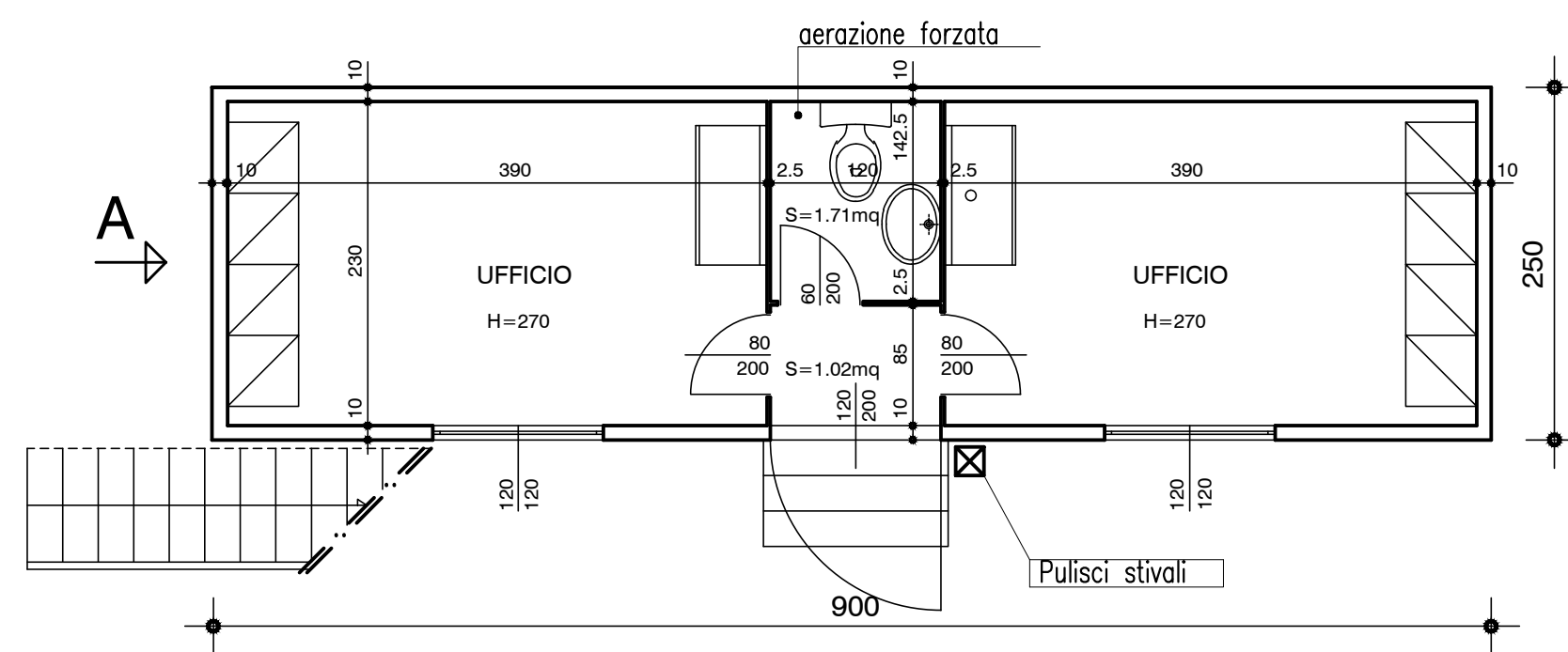
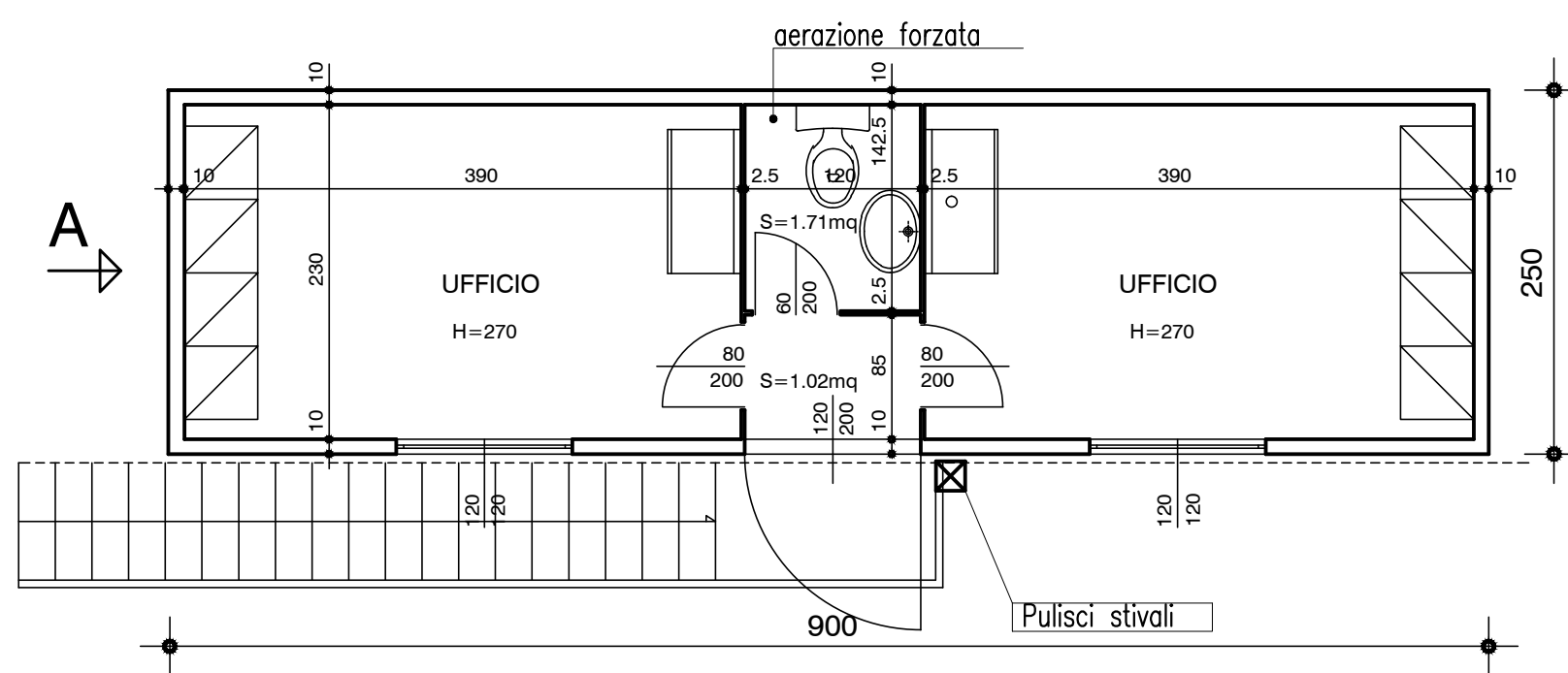


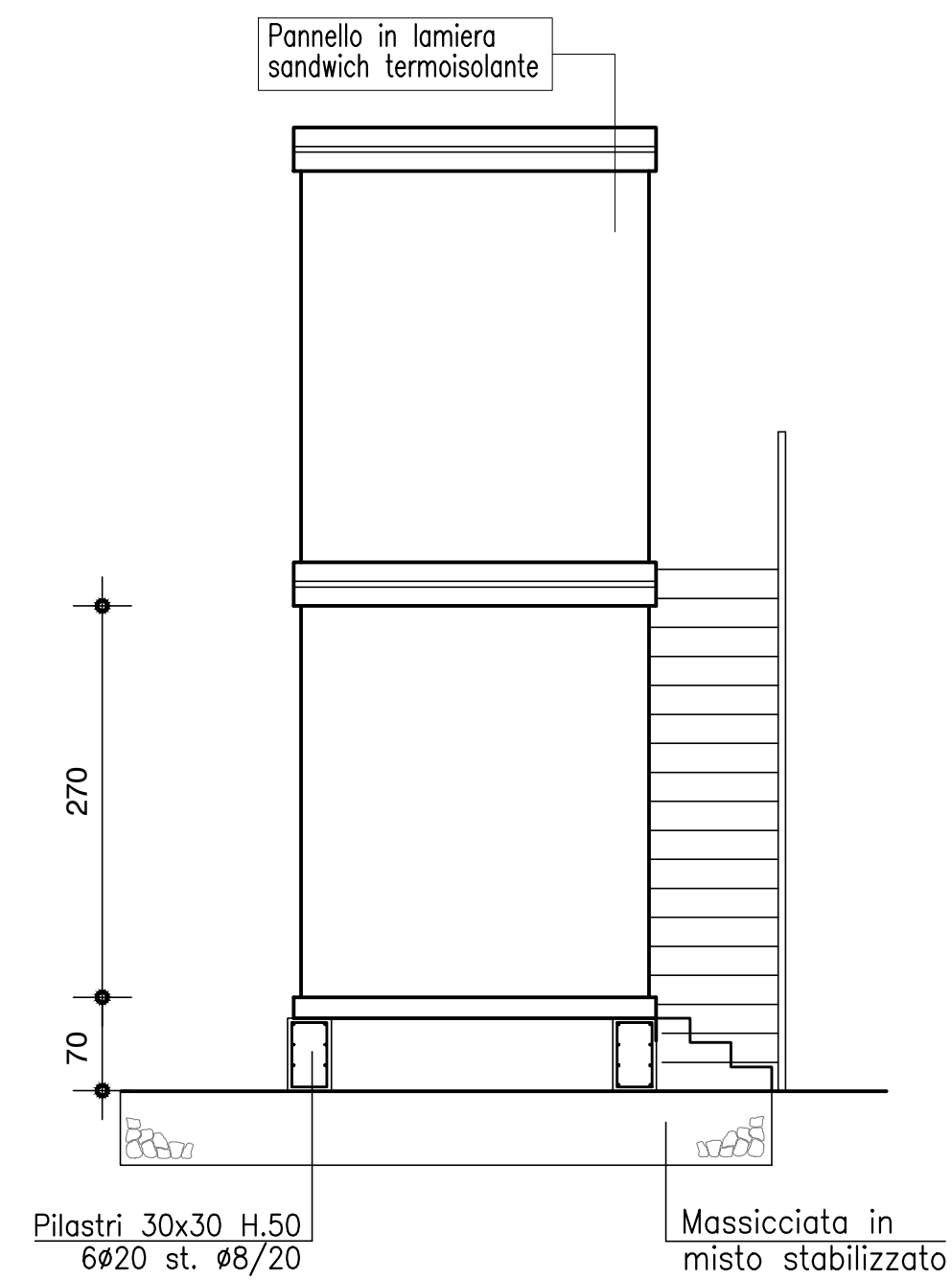
PIANTA PIANO TERRA



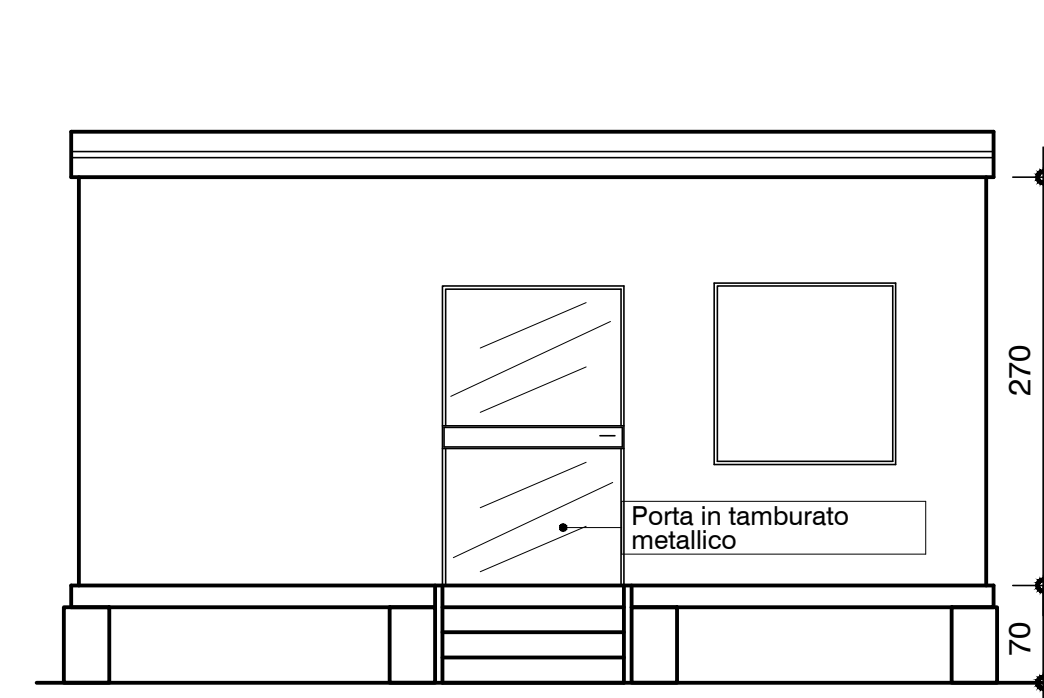
PIANTA PIANO PRIMO



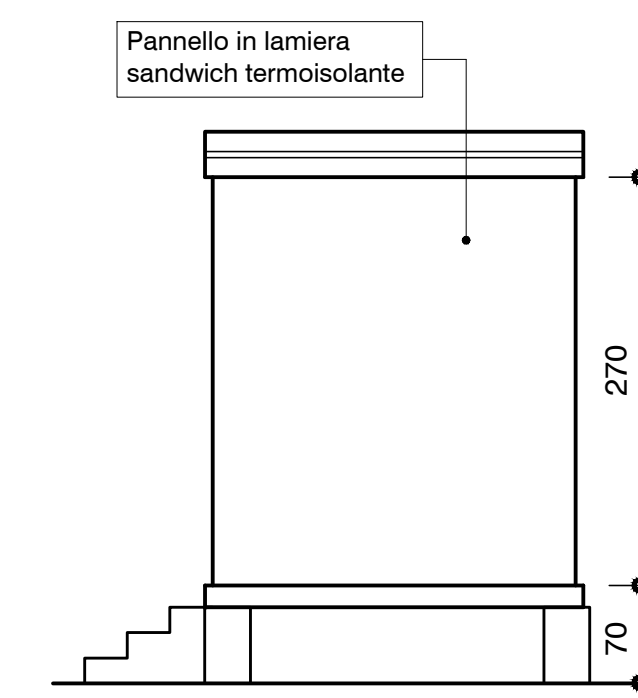
PROSPETTO A



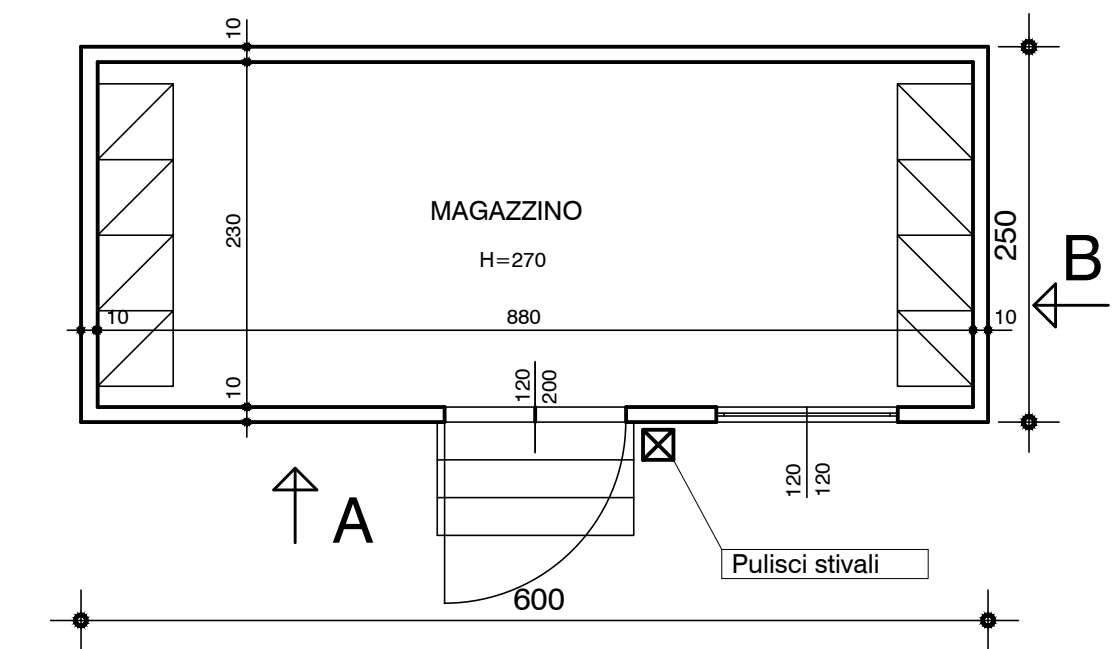
PROSPETTO A



PROSPETTO B

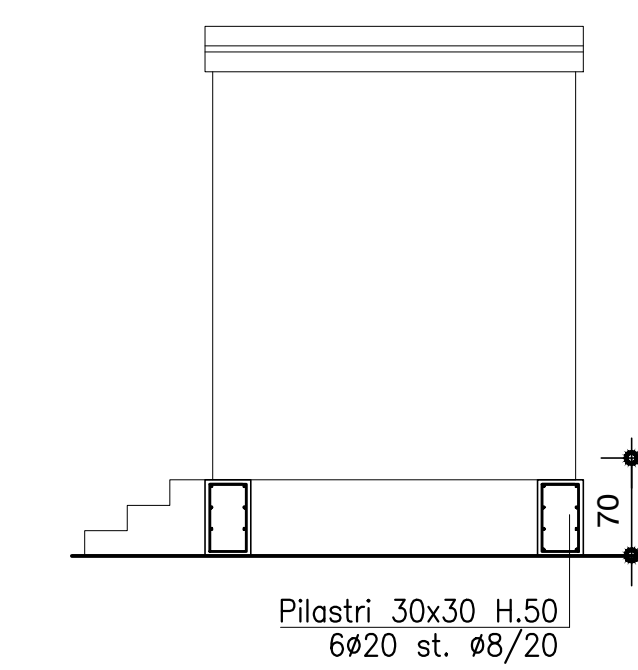


PIANTA

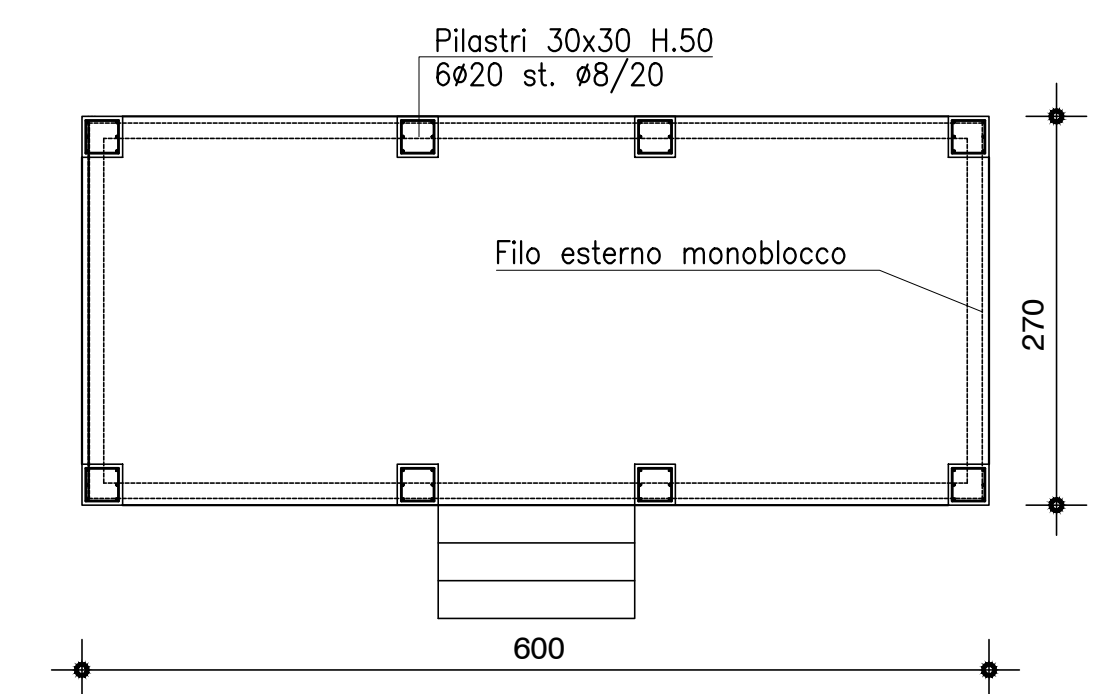


CARPENTERIA E ARMATURA BASAMENTO DEPOSITO

SEZIONE



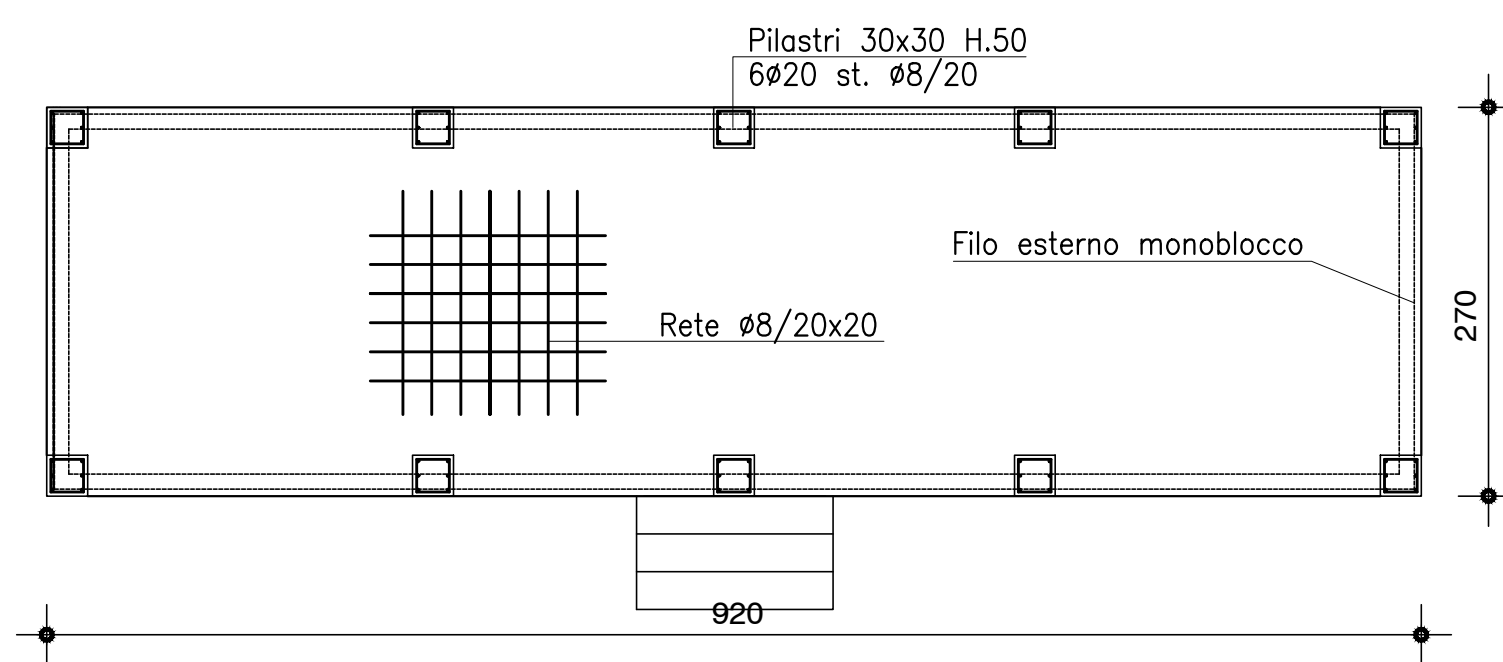
PIANTA



**MATERIALI**  
 CLS C30/35  
 ACCIAIO B450C  
 MAGRONE C15/20 SPESSORE: 15-20cm  
 COPRIFERRO MINIMO 3CM  
 TIRAFONDI: VITE CLASSE 8.8 - DADO 6S  
 ACCIAIO PER CARPENTERIA: Fe 360  
 INCIDENZA FERRO: 150 Kg/mc.

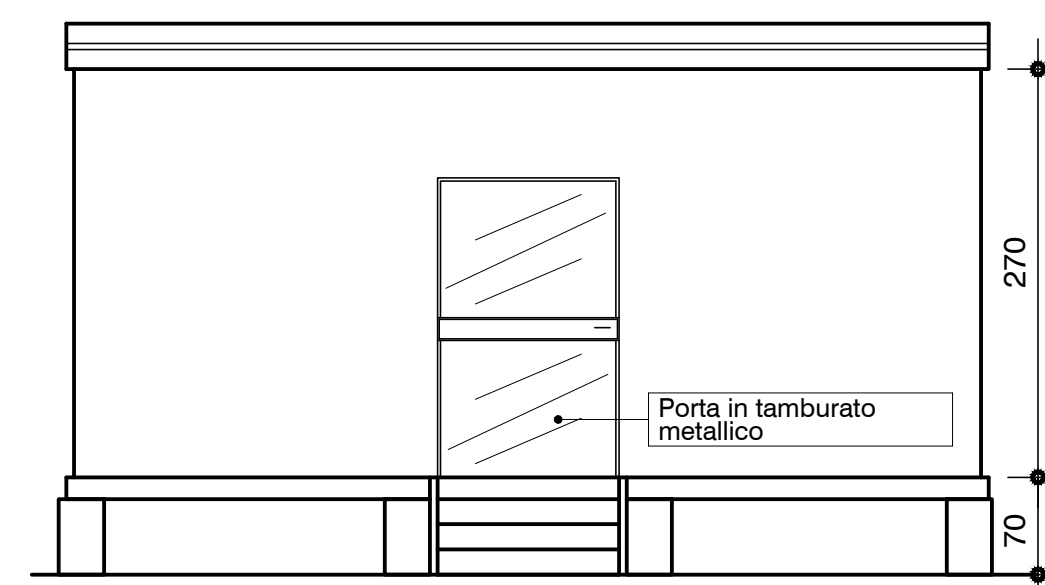
CARPENTERIA E ARMATURA BASAMENTO UFFICI

PIANTA

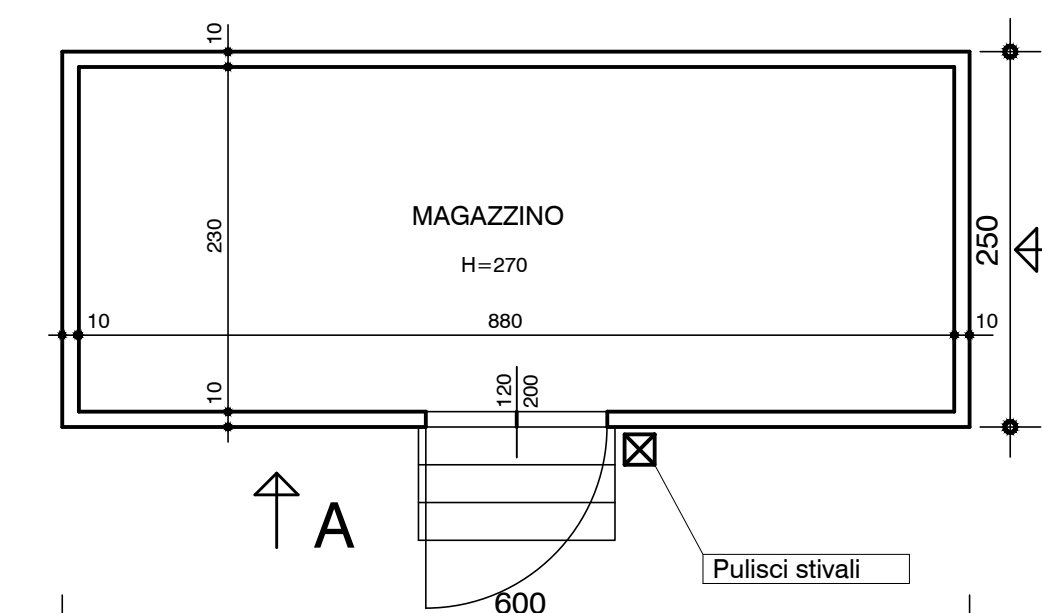


CONTAINER DOTAZIONI DI SICUREZZA 1:50

PROSPETTO A

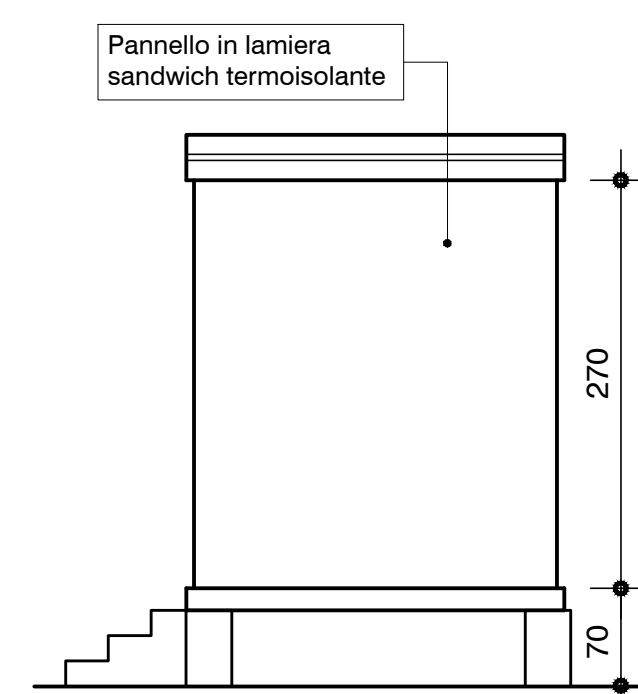


PIANTA

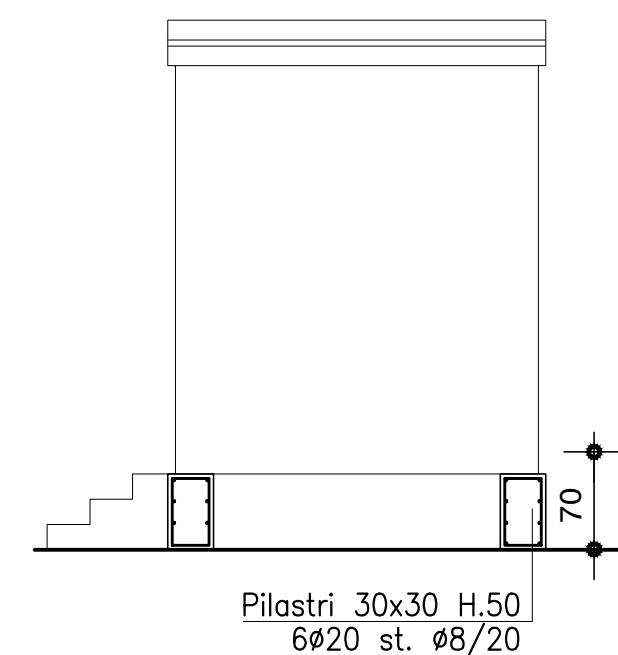


CARPENTERIA E ARMATURA BASAMENTO CONTAINER

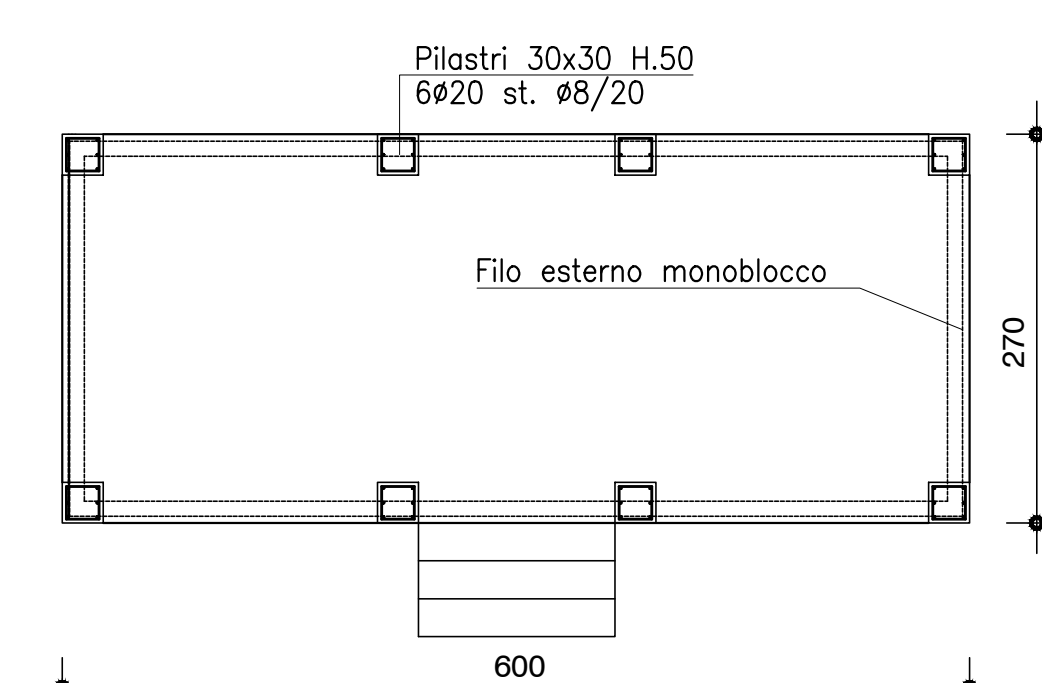
PROSPETTO B



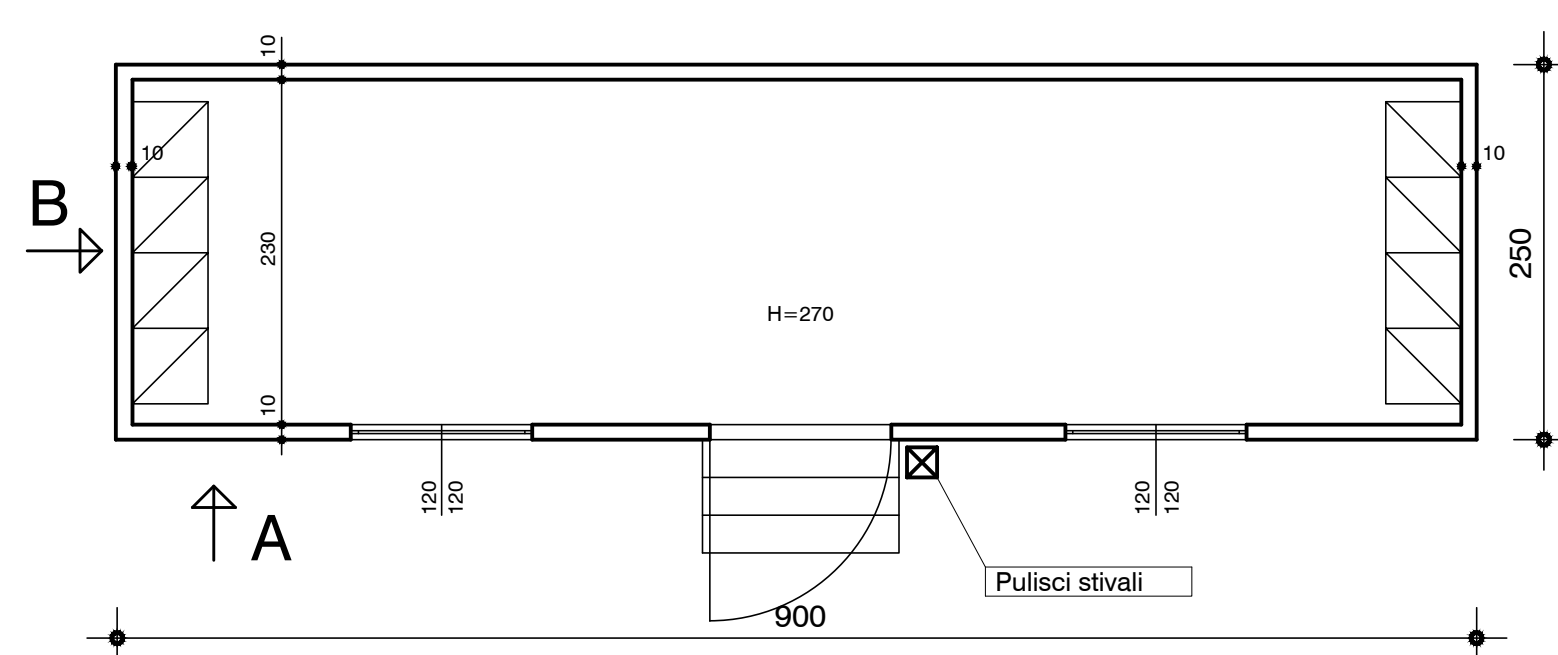
SEZIONE



PIANTA



PIANTA



COMMITTENTE:

ALTA Sorveglianza:

GENERAL CONTRACTOR:

INFRASTRUTTURE FERROVIARIE STRATEGICHE DEFINITE DALLA LEGGE OBIETTIVO N.443/01  
 TRATTA A.V./A.C. TERZO VALICO DEI GIOVI  
 PROGETTO ESECUTIVO

CA22 - CANTIERE OPERATIVO PERNIGOTTI COP6

PREFABBRICATI USO UFFICIO DI CANTIERE, CONTAINER DOTAZIONI, DEPOSITO ADDITIVI  
 PIANTE, PROSPETTI E ARMATURA FONDAZIONI

GENERAL CONTRACTOR <b>Cociv</b> Ing. N. Meistro		DIRETTORE LAVORI		SCALA: 1:50
COMMESSA <b>IG51</b>	LOTTO <b>01</b>	FASE <b>E</b>	ENTE <b>CV</b>	TIPO DOC. <b>AB</b>
OPERA/DISCIPLINA <b>CA2201</b>		PROGR. <b>101</b>	REV. <b>A</b>	

PROGETTAZIONE

Rev.	Descrizione emissione	Redatto	Data	Verificato	Data	Progettista Integratore	Data	IL PROGETTISTA
A00	Prima Emissione	COCIV	25/07/2019	COCIV	25/07/2019	A. Mancarella	25/07/2019	

Nome File: IG51-01-E-CV-AB-CA22-01-101-A00  
 CUP: F81H9200000008