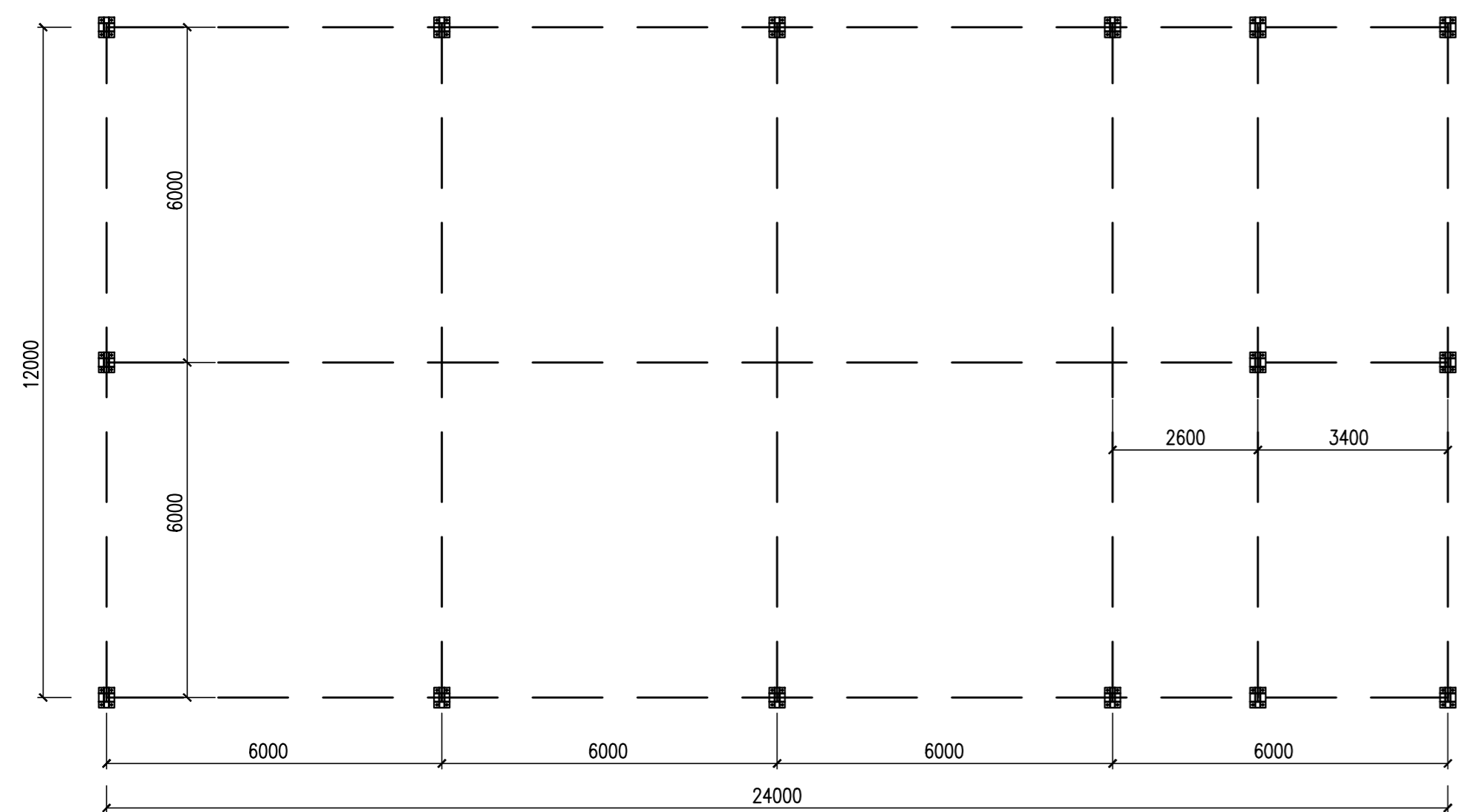
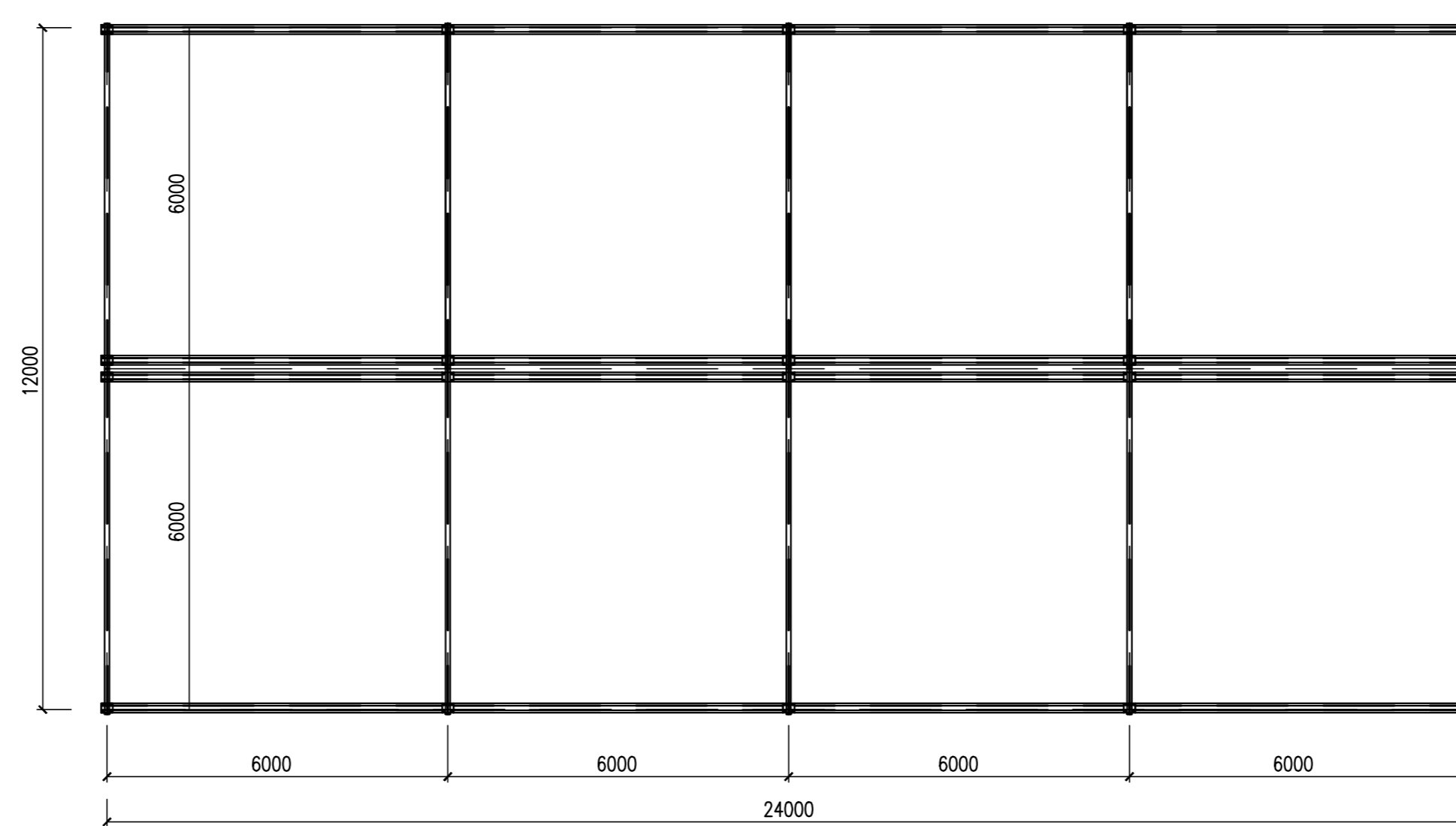


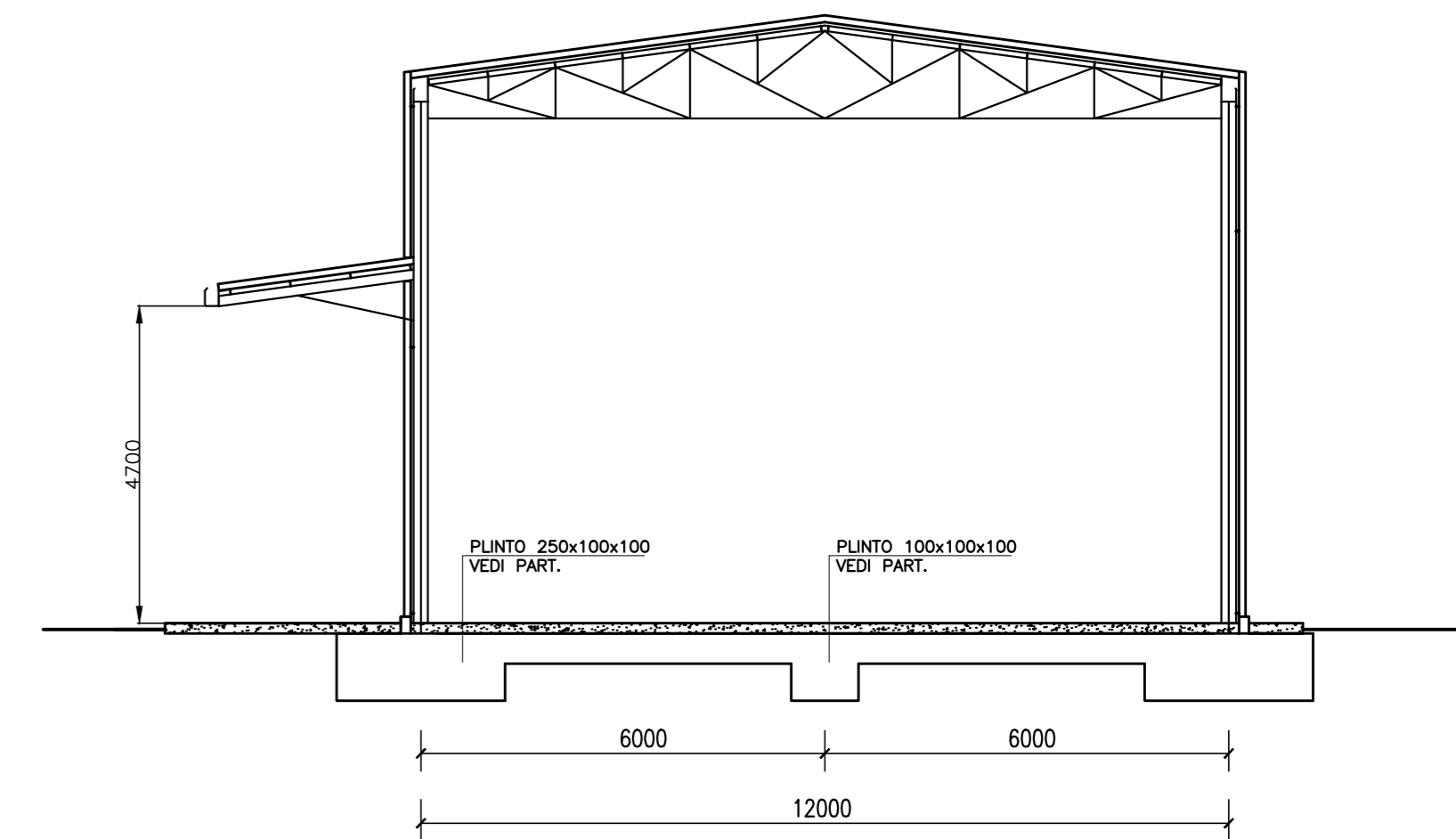
PIANTA PILASTRI (1:100)



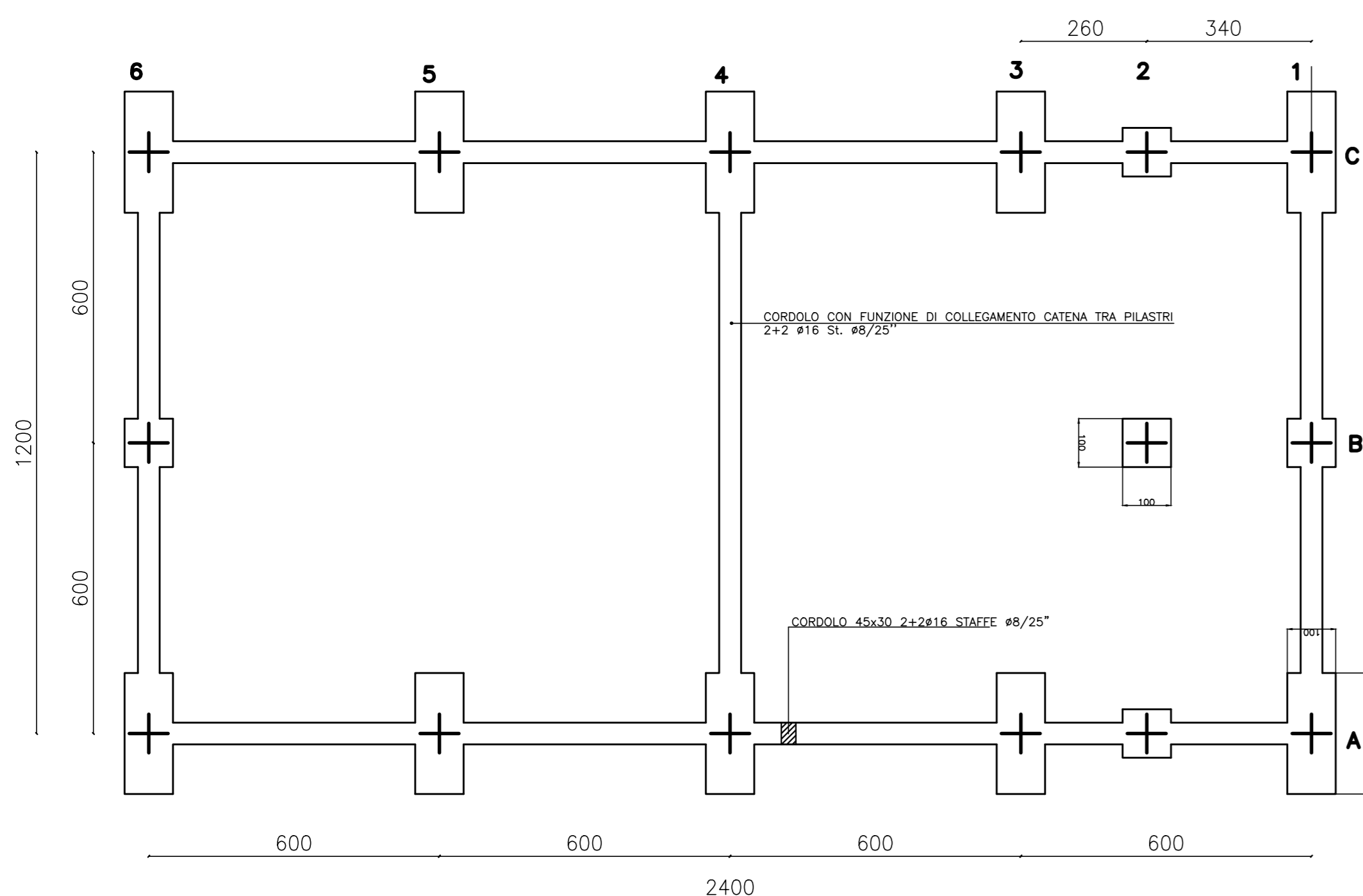
CARPENTERIA COPERTURA (1:100)



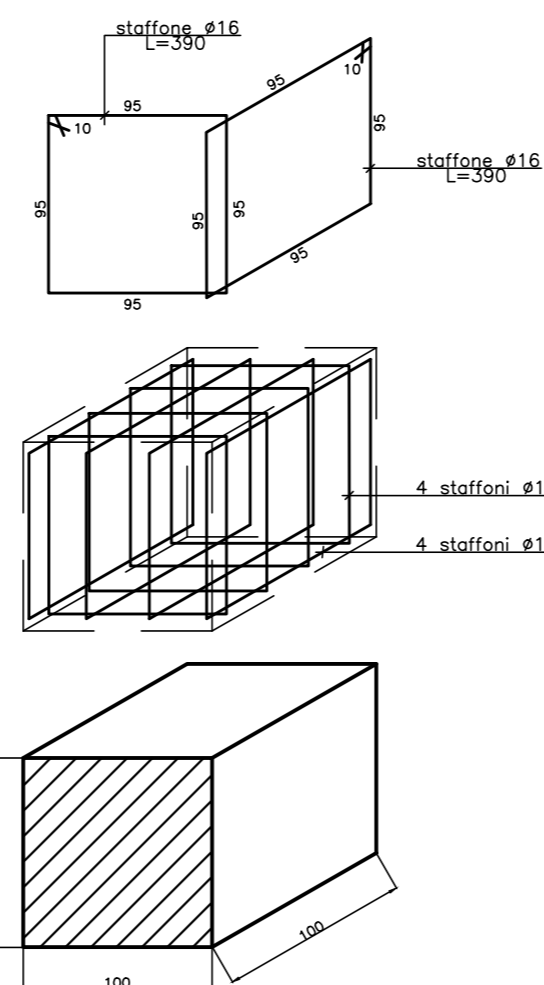
SEZIONE (1:100)



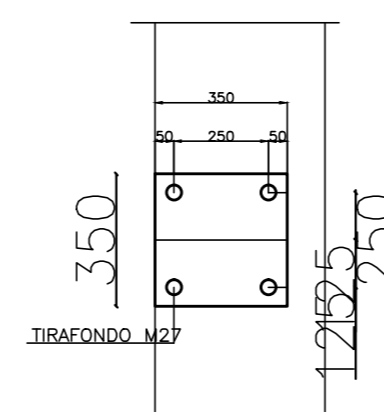
PIANTA FONDAZIONI (1:100)



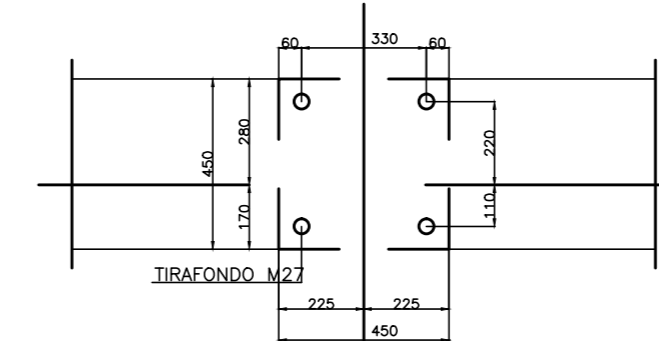
PART. PLINTO 100x100x100 (1:20)



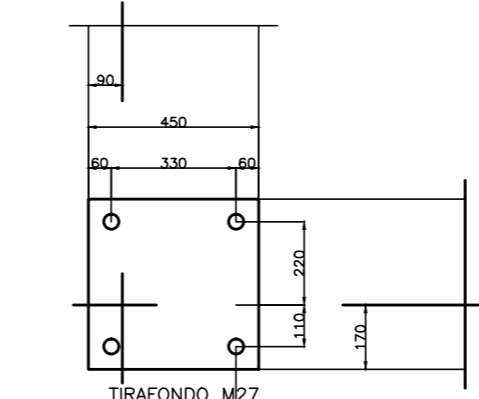
PARTIC. B1 (1:10)



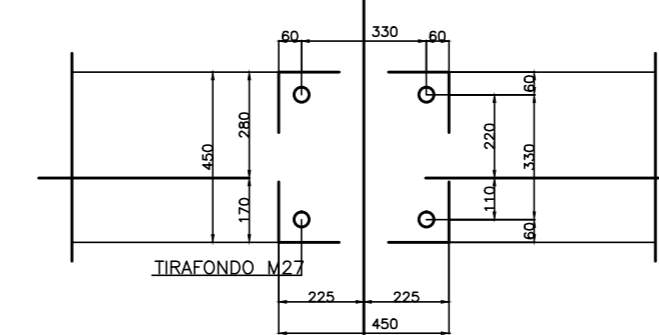
PARTIC. C4 (1:10)



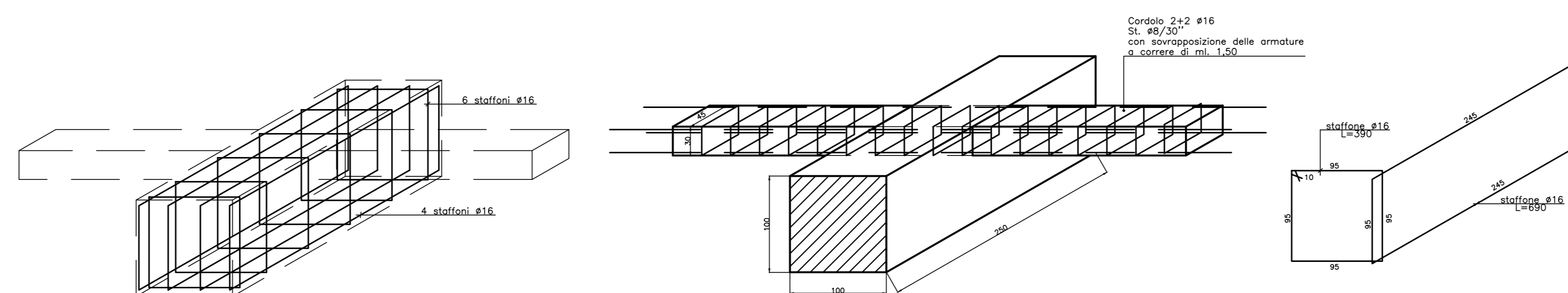
PARTIC. C1 (1:10)



PARTIC. C3 (1:10)



PART. PLINTO 250x100x100 (1:20)



**MATERIALI**  
 CLS C30/35  
 ACCIAIO B450C  
 MAGRONE C15/20 SPESSORE: 15-20cm  
 COPRIFERRO MINIMO 3CM  
 TIRAFONDI: VITE CLASSE 8.8 - DADO 6S  
 ACCIAIO PER CARPENTERIE: Fe 360  
 INCIDENZA FERRO: 150 Kg/mc.

COMMITTENTE: **RFI** RETE FERROVIARIA ITALIANA GRUPPO FERROVIE DELLO STATO ITALIANE

ALTA Sorveglianza: **ITALFERR** GRUPPO FERROVIE DELLO STATO ITALIANE

GENERAL CONTRACTOR: **COCIV** Consorzio Collegamenti Integrati Valcis

INFRASTRUTTURE FERROVIARIE STRATEGICHE DEFINITE DALLA LEGGE OBIETTIVO N.443/01  
 TRATTA A.V./A.C. TERZO VALICO DEI GIOVI  
 PROGETTO ESECUTIVO

CA22 - CANTIERE OPERATIVO PERNIGOTTI COP6

PREFABBRICATO USO OFFICINA  
 CARPENTERIA E ARMATURA FONDAZIONI

GENERAL CONTRACTOR <b>Cociv</b> Ing. N. Maestro		DIRETTORE LAVORI		SCALA: varie
COMMESSA <b>IG51</b>	LOTTO <b>01</b>	FASE <b>E</b>	ENTE <b>CV</b>	TIPO DOC. <b>BZ</b>
OPERA/DISCIPLINA <b>CA2201</b>		PROGR. <b>102</b>	REV. <b>A</b>	

Rev.	Descrizione emissione	Redatto	Data	Verificato	Data	Progettista	Data	IL PROGETTISTA
A00	Prima Emissione	COCIV	25/07/2019	COCIV	25/07/2019	A. Mancarella	25/07/2019	<b>COCIV</b> Dott. Ing. A. Mancarella Ordine Ingegneri Prov. TO n. 6271 R

n. Elab. Nome File: IG51-01-E-CV-BZ-CA22-01-102-A00  
 CUP: F81H9200000008