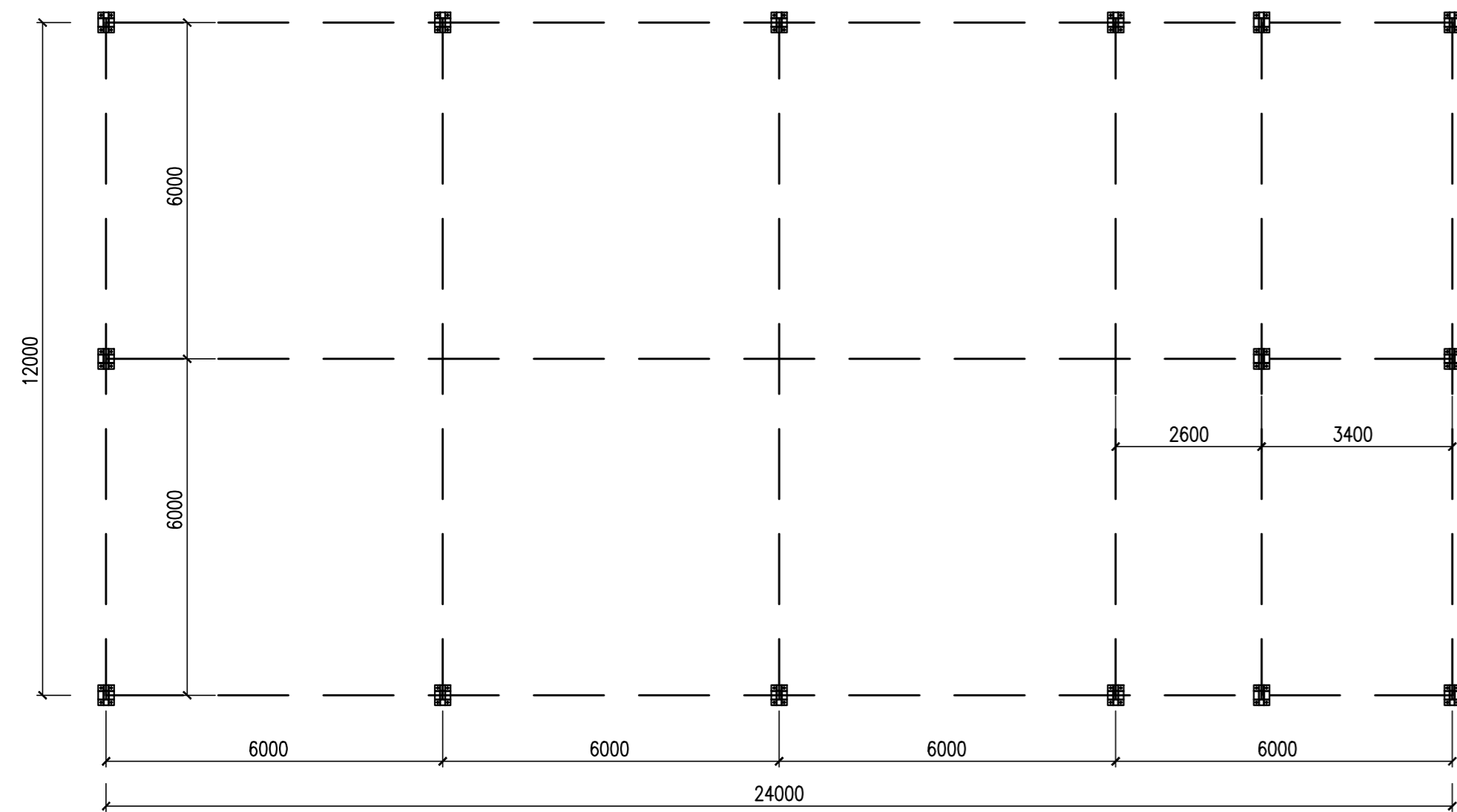
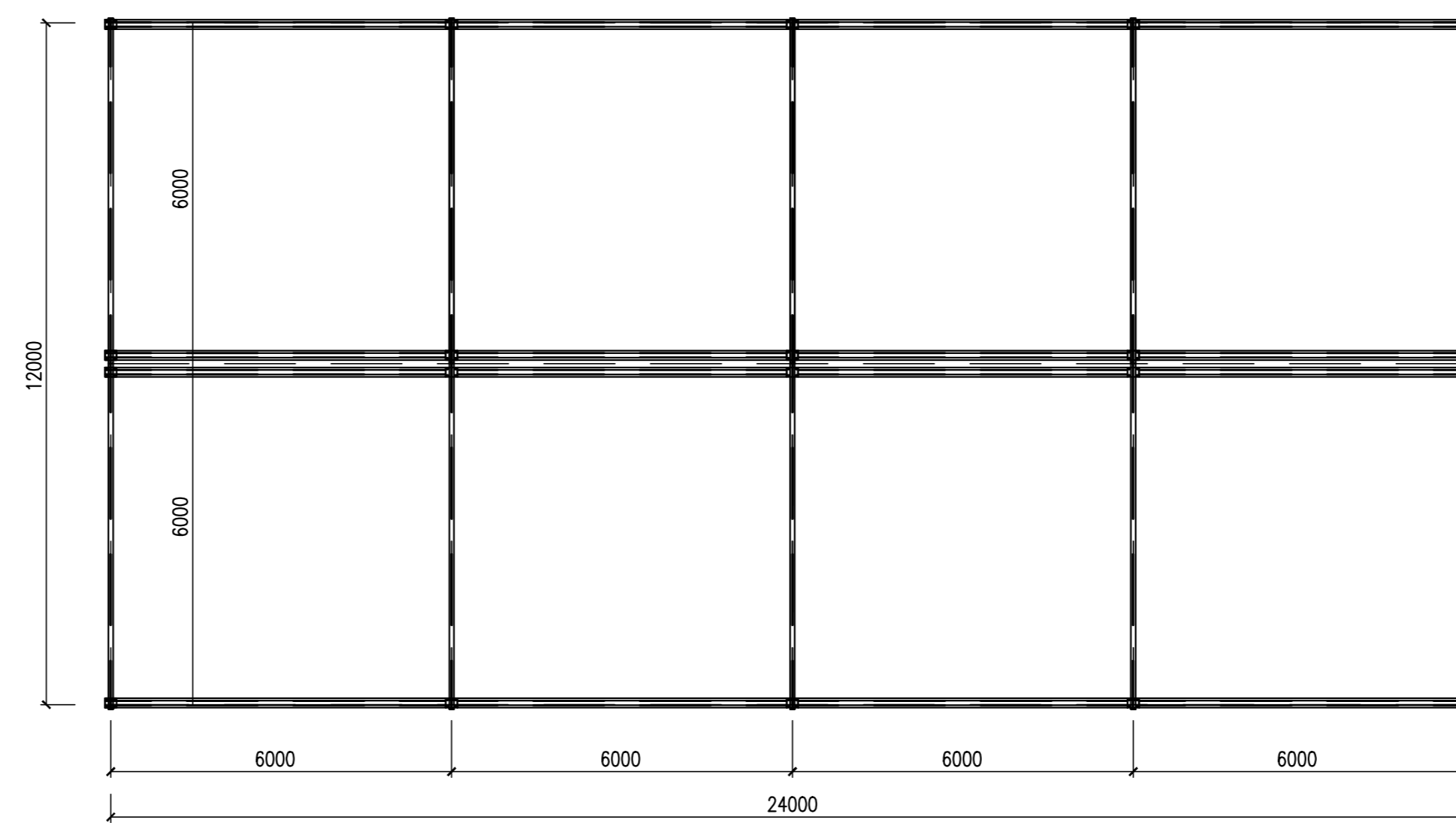


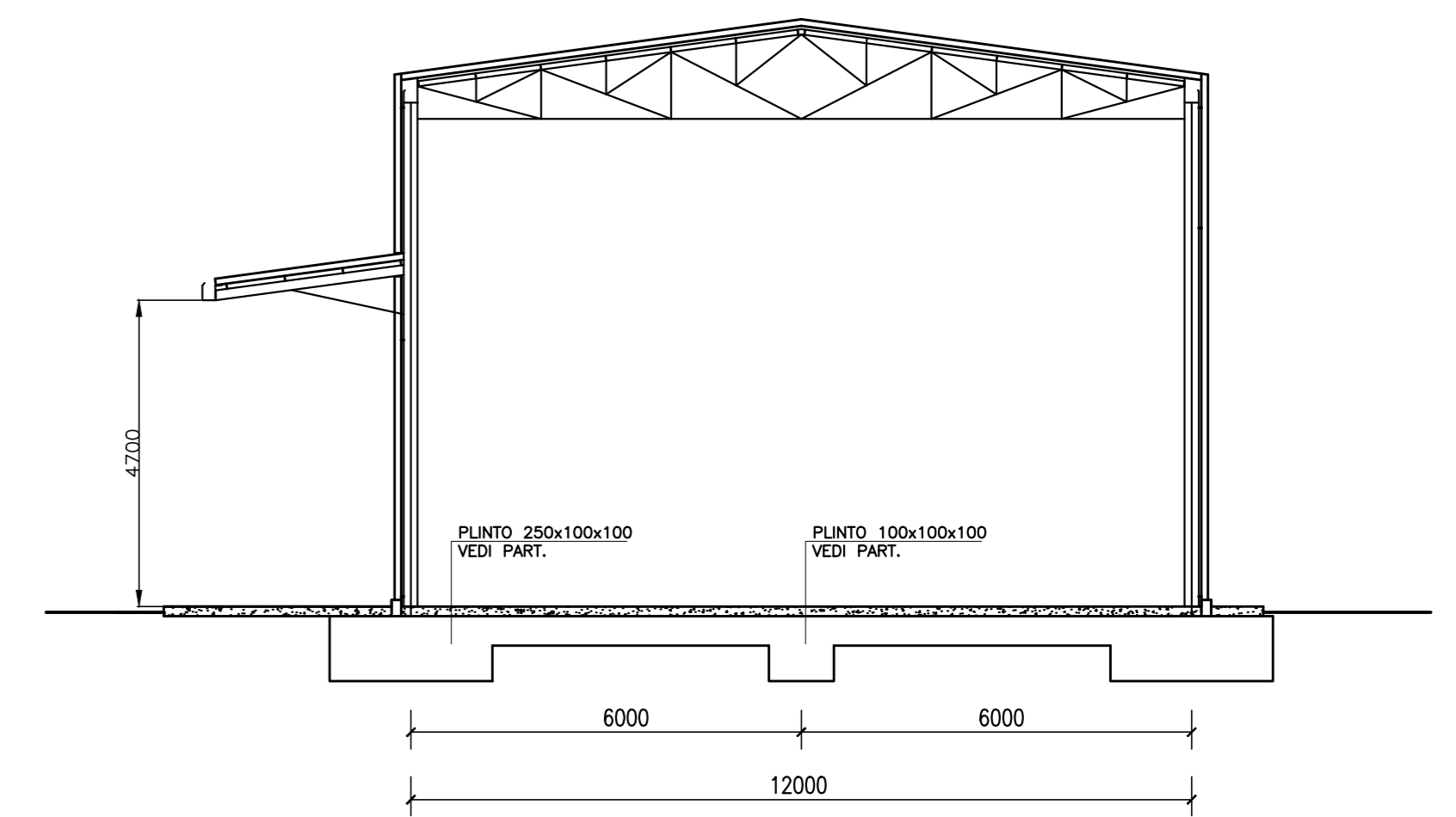
PIANTA PILASTRI (1:100)



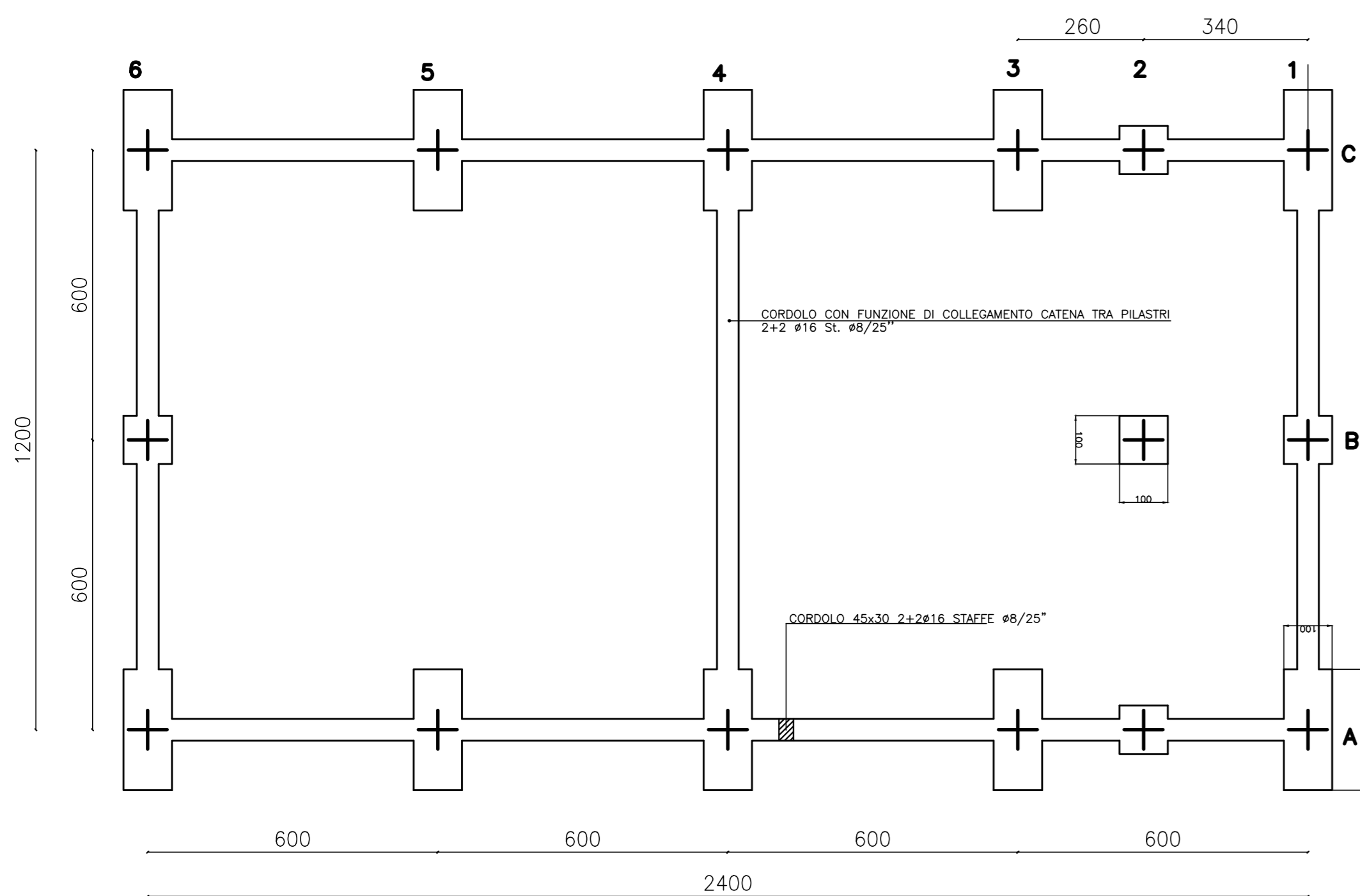
CARPENTERIA COPERTURA (1:100)



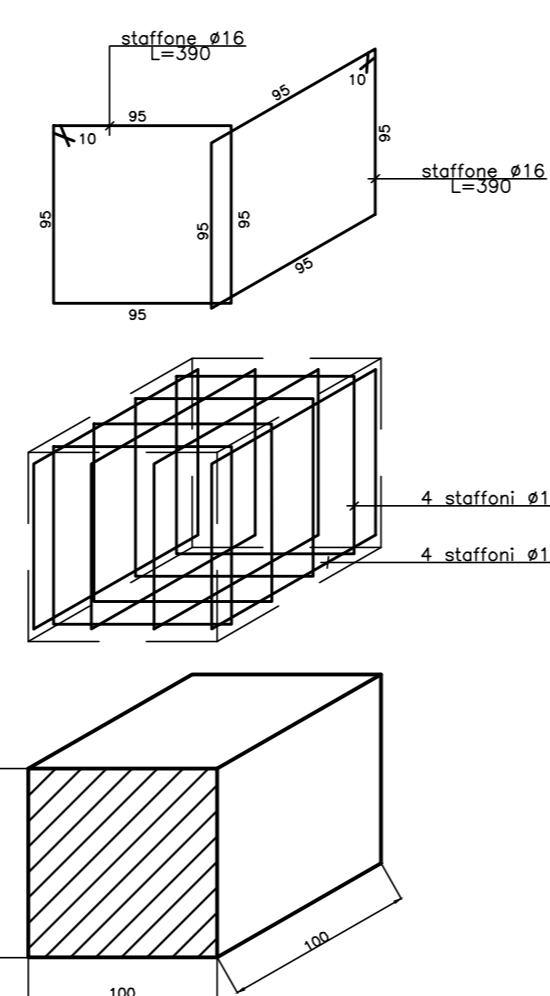
SEZIONE (1:100)



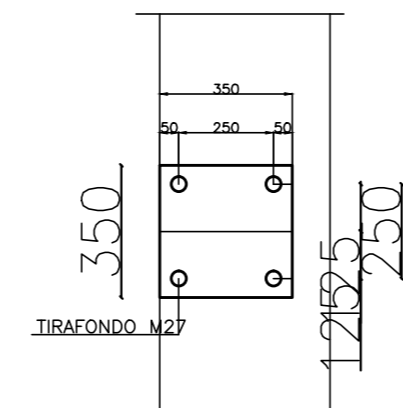
PIANTA FONDAZIONI (1:100)



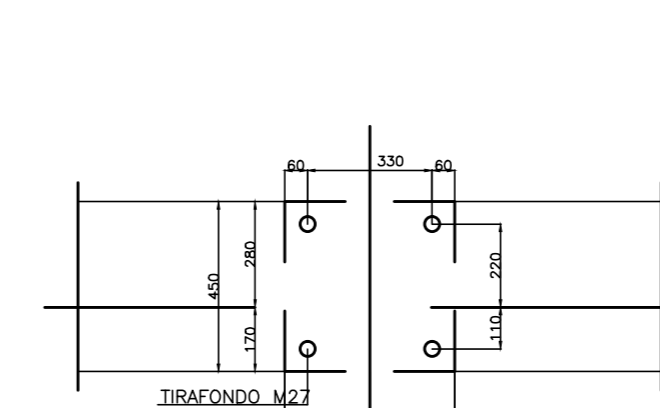
PART. PLINTO 100x100x100 (1:20)



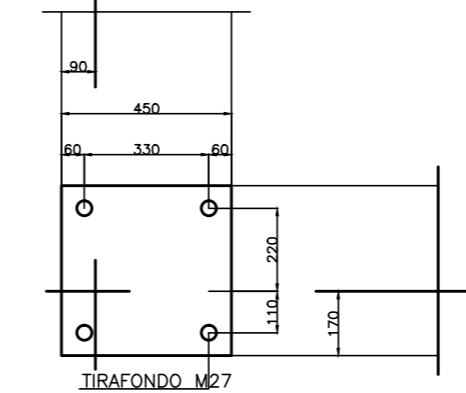
PARTIC. B1 (1:10)



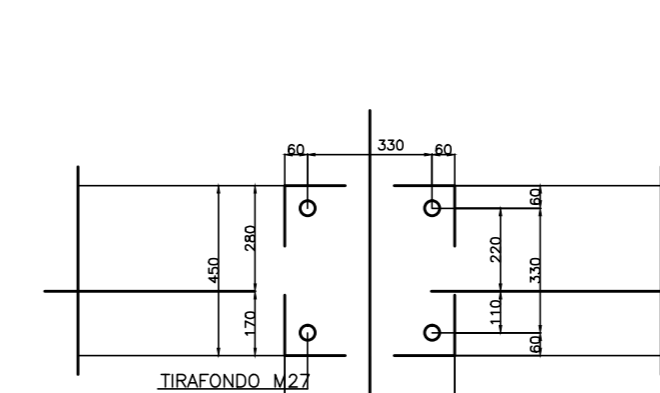
PARTIC. C4 (1:10)



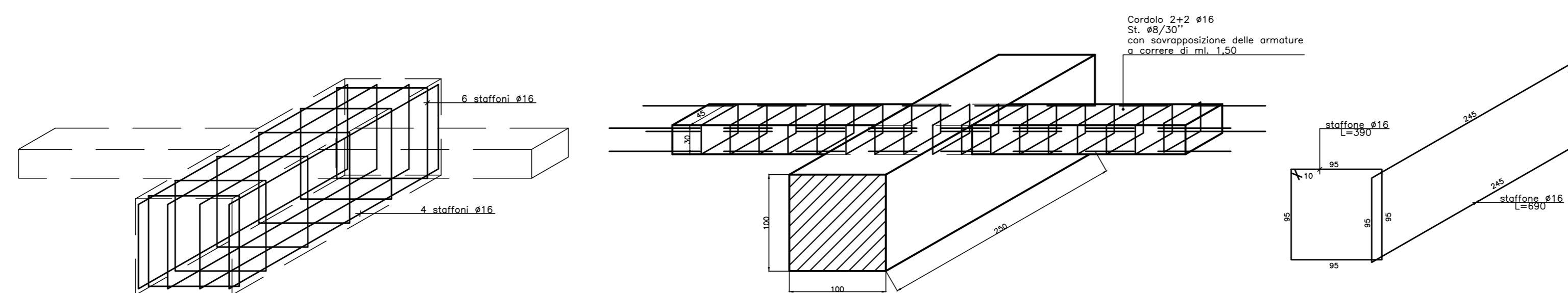
PARTIC. C1 (1:10)



PARTIC. C3 (1:10)



PART. PLINTO 250x100x100 (1:20)



MATERIALI
 CLS C30/35
 ACCIAIO B450C
 MAGRONE C15/20 SPESSORE: 15-20cm
 COPRIFERRO MINIMO 3CM
 TIRAFONDI: VITE CLASSE 8.8 - DADO 6S
 ACCIAIO PER CARPENTERIE: Fe 360
 INCIDENZA FERRO: 150 Kg/mc.

COMMITTENTE:

 ALTA Sorveglianza:

 GENERAL CONTRACTOR:

INFRASTRUTTURE FERROVIARIE STRATEGICHE DEFINITE DALLA LEGGE OBIETTIVO N.443/01
TRATTA A.V./A.C. TERZO VALICO DEI GIOVI
PROGETTO ESECUTIVO
CA22 - CANTIERE OPERATIVO PERNIGOTTI COP6
 PREFABBRICATO USO MAGAZZINO
 CARPENTERIA E ARMATURA FONDAZIONI

GENERAL CONTRACTOR Cociv Ing. N. Melstro		DIRETTORE LAVORI		SCALA: varie
COMMESSA IG51	LOTTO 01	FASE E	ENTE CV	TIPO DOC. BZ
OPERA/DISCIPLINA CA2201		PROGR. 103	REV. A	

Rev.	Descrizione emissione	Redatto	Data	Verificato	Data	Progettista Integratore	Data	IL PROGETTISTA
A00	Prima Emissione	COCIV	25/07/2019	COCIV	25/07/2019	A. Mancarella	25/07/2019	

Nome File: IG51-01-E-CV-BZ-CA22-01-103-A00
 CUP: F81H9200000008