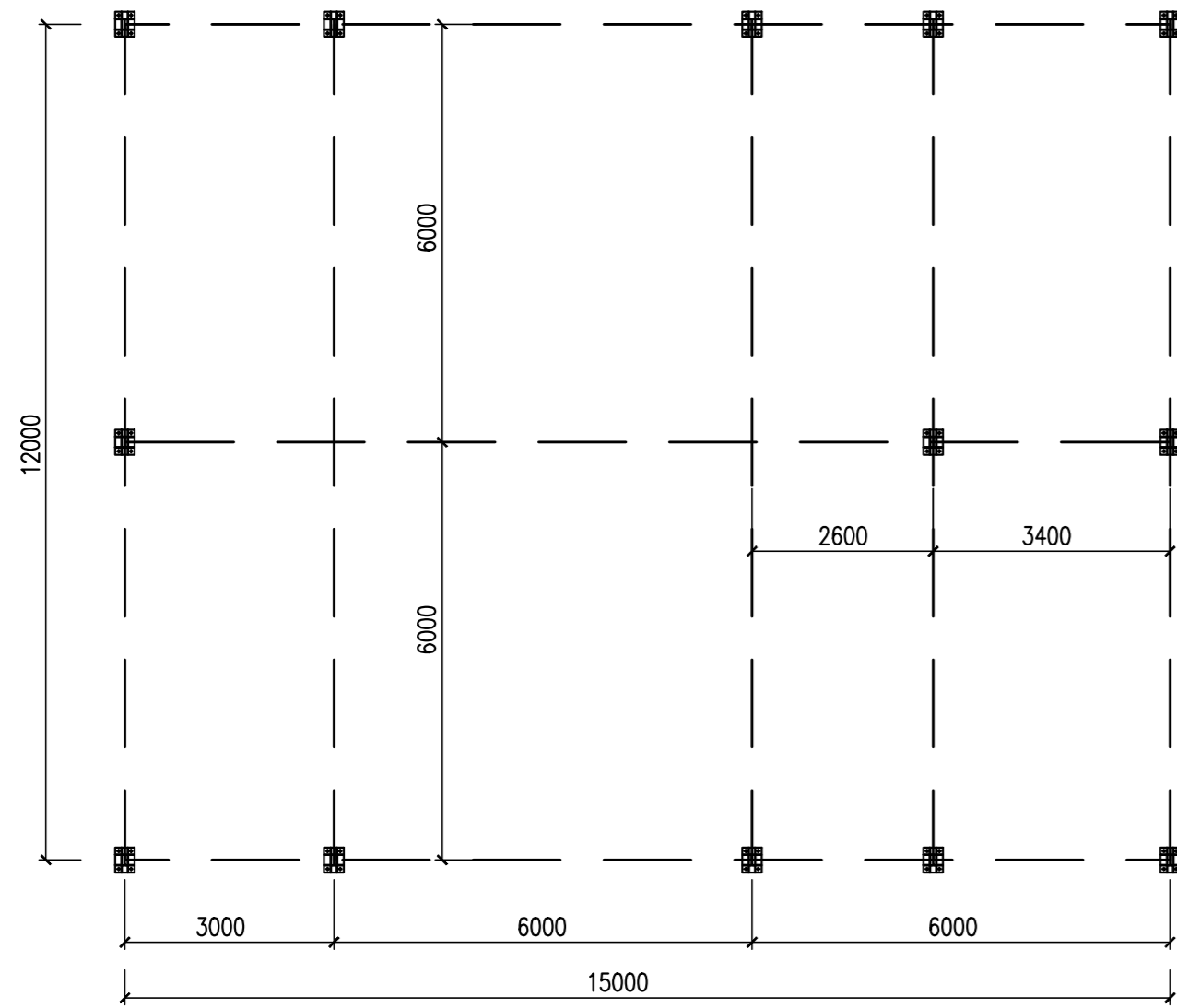
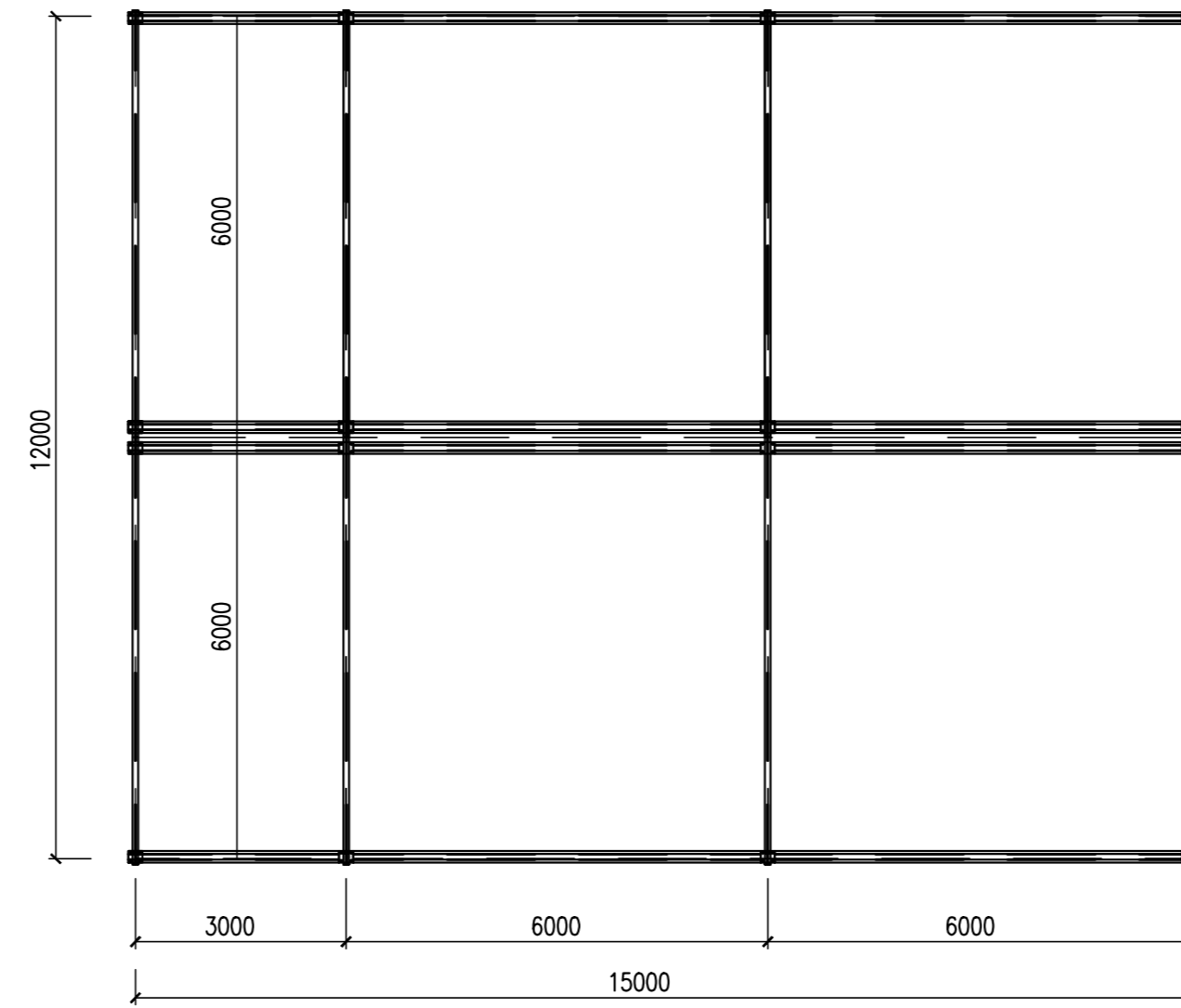


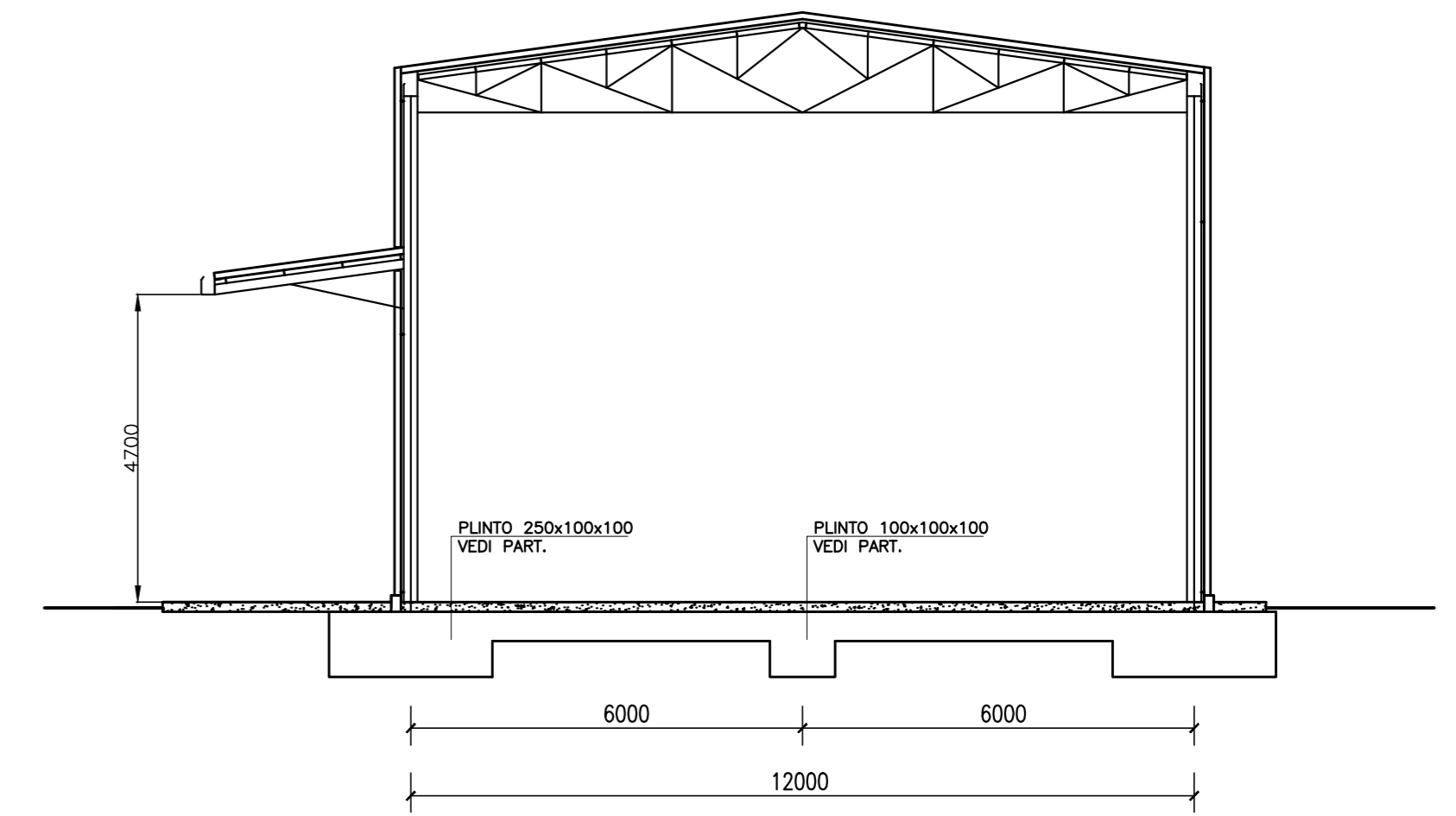
PIANTA PILASTRI (1:100)



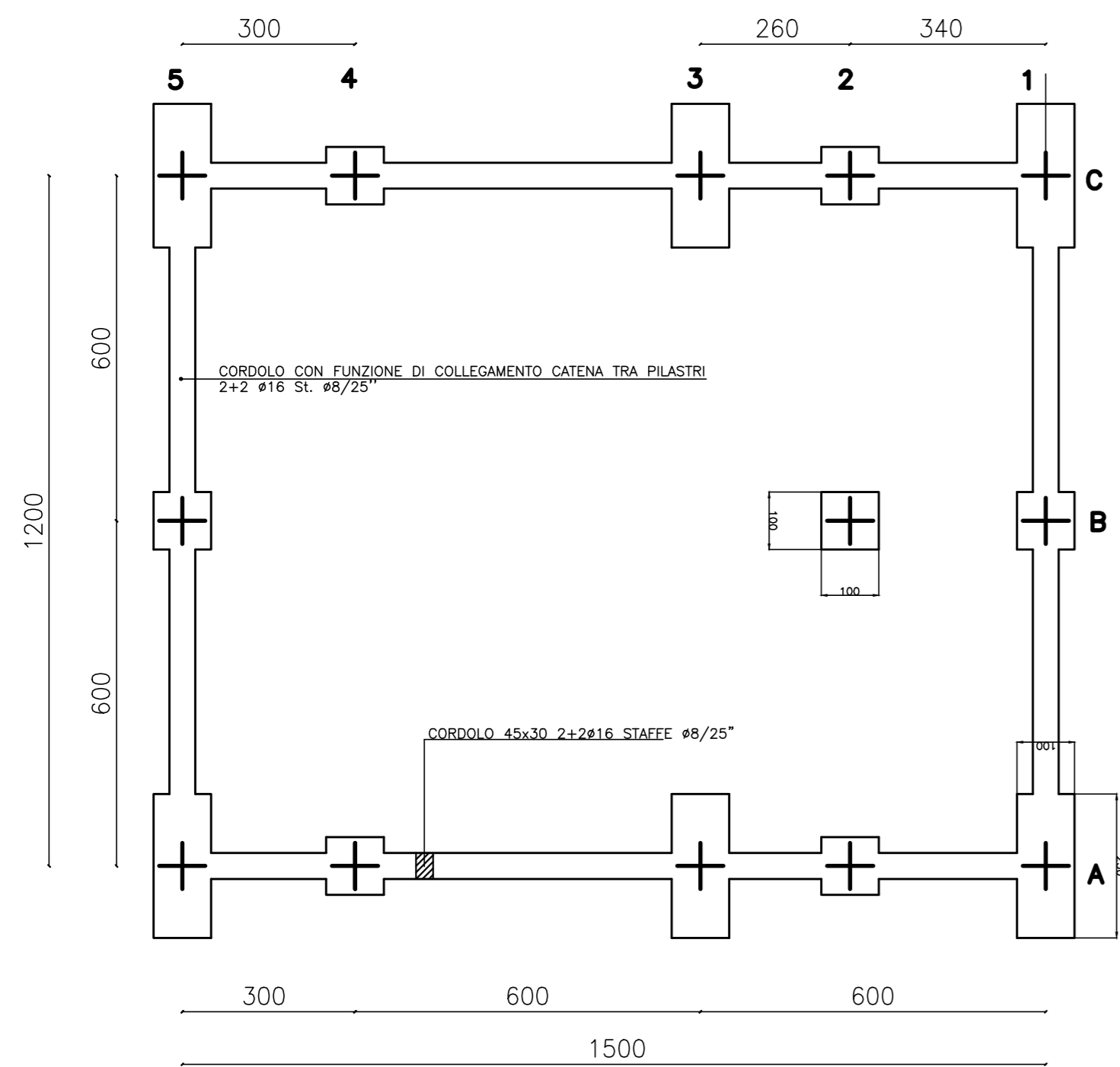
CARPENTERIA COPERTURA (1:100)



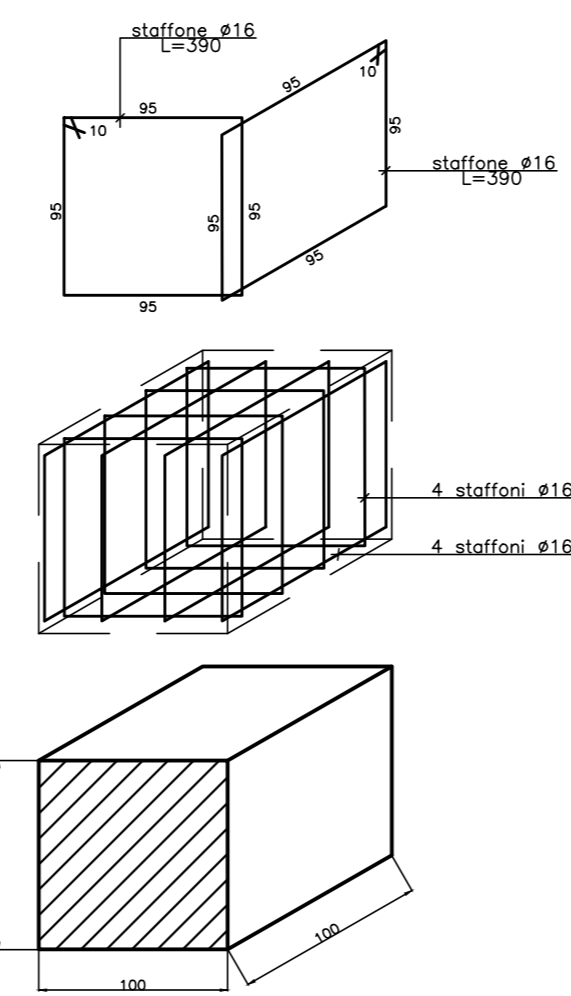
SEZIONE (1:100)



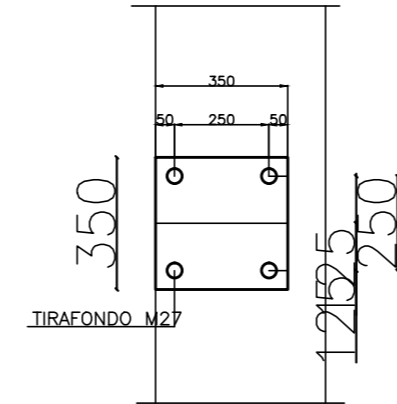
PIANTA FONDAZIONI (1:100)



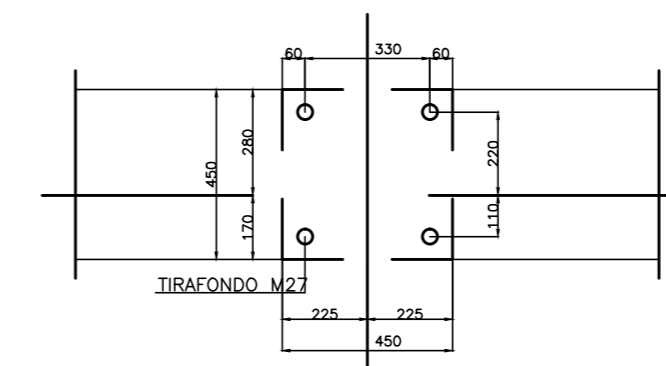
PART. PLINTO 100x100x100 (1:20)



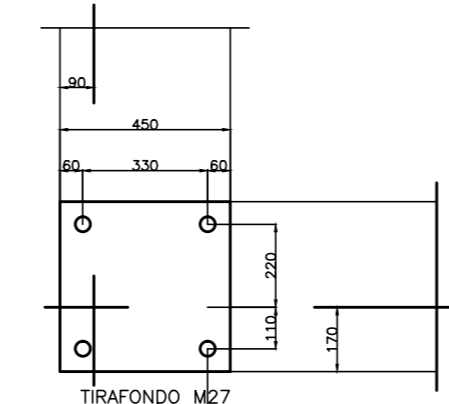
PARTIC. B1 (1:10)



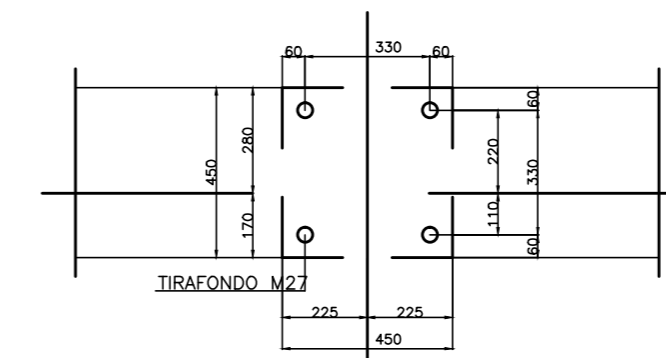
PARTIC. C4 (1:10)



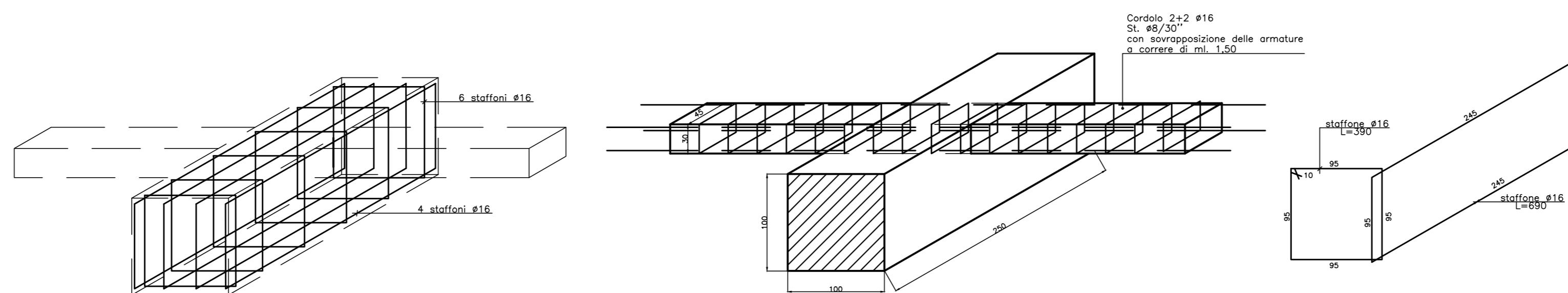
PARTIC. C1 (1:10)




PARTIC. C3 (1:10)





PART. PLINTO 250x100x100 (1:20)



MATERIALI
 CLS C30/35
 ACCIAIO B450C
 MAGRONE C15/20 SPESSORE: 15-20cm
 COPRIFERRO MINIMO 3CM
 TIRAFONDI: VITE CLASSE 8.8 - DADO 6S
 ACCIAIO PER CARPENTERIE: Fe 360
 INCIDENZA FERRO: 150 Kg/mc.

COMMITTENTE:

 RETE FERROVIARIA ITALIANA
 GRUPPO FERROVIE DELLO STATO ITALIANE

ALTA Sorveglianza:

 GRUPPO FERROVIE DELLO STATO ITALIANE


GENERAL CONTRACTOR:

 Consorzio Collegamenti Integrati Valchi

INFRASTRUTTURE FERROVIARIE STRATEGICHE DEFINITE DALLA LEGGE OBIETTIVO N.443/01
 TRATTA A.V./A.C. TERZO VALICO DEI GIOVI
 PROGETTO ESECUTIVO

CA22 - CANTIERE OPERATIVO PERNIGOTTI COP6

PREFABBRICATO USO DEPOSITO-MAGAZZINO
 TIPOLOGICO - CARPENTERIA E ARMATURA FONDAZIONI

GENERAL CONTRACTOR Cociv Ing. N. Maestro		DIRETTORE LAVORI		SCALA: varie
COMMESSA IG51	LOTTO 01	FASE E	ENTE CV	TIPO DOC. BZ
OPERA/DISCIPLINA CA2201		PROGR. 104	REV. A	

Rev.	Descrizione emissione	Redatto	Data	Verificato	Data	Progettista	Data	IL PROGETTISTA
A00	Prima Emissione	COCIV	25/07/2019	COCIV	25/07/2019	A. Mancarella	25/07/2019	

Nome File: I051-01-E-CV-82-CA22-01-104-A00
 CUP: F81H92000000008