

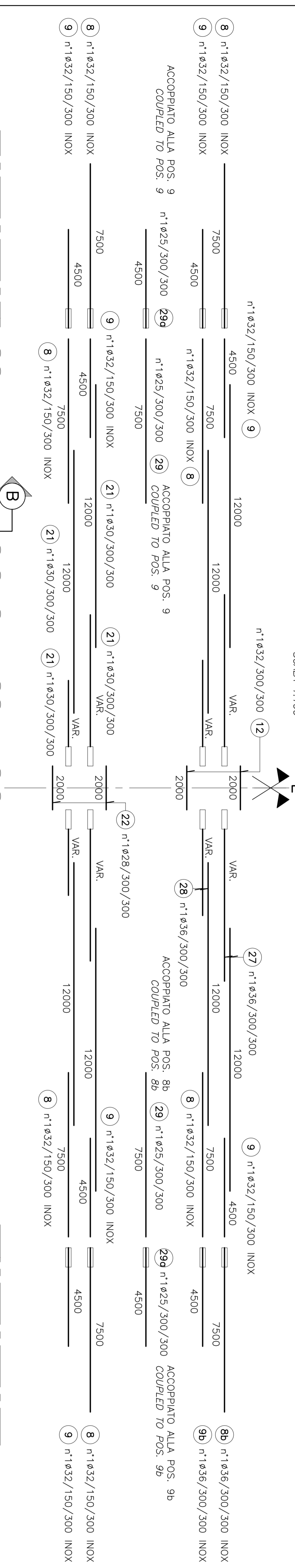
NOTE GENERALI

NOTE:
TUTTE LE DIMENSIONI SONO IN MILLIMETRI, SALVO LE DIMENSIONI INDICATE ALTRIMENTI.
LE QUOTE ALTERNATIVE SONO IN METRI SIMIL

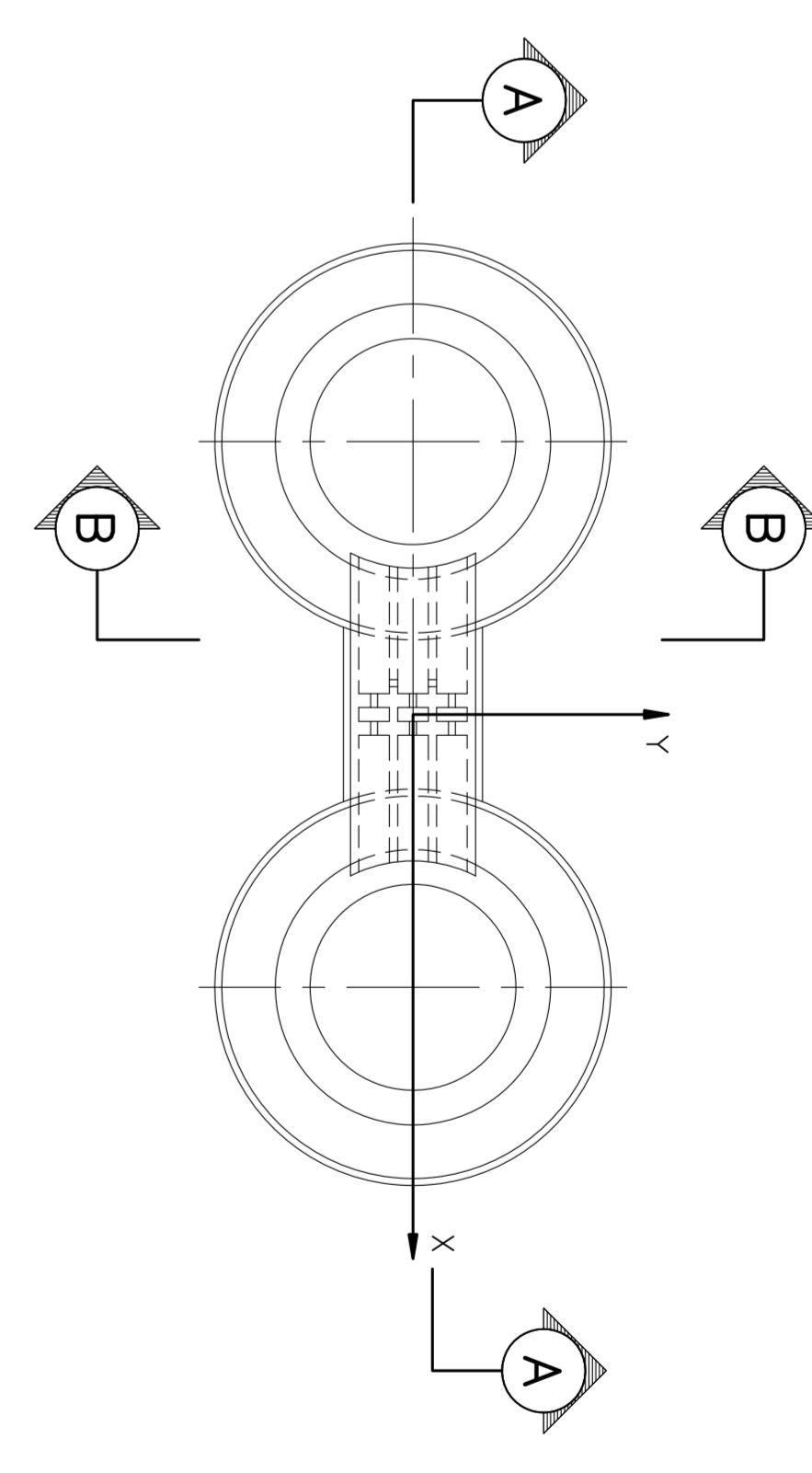
NOTE:
ALL THE DIMENSIONS ARE IN MILLIMETERS, EXCEPT WHERE OTHERWISE INDICATED.
ALL LEVELS ARE IN METERS ABOVE SEA LEVEL.

QUESTO ELABORATO GRAFICO VA LETTO INSIEME A TUTTE LE ALTRE TAVOLE DI ARMATURA.
THIS DRAWING TO BE READ IN CONJUNCTION WITH TOGETHER WITH ALL THE OTHER REINFORCEMENT TABLES.

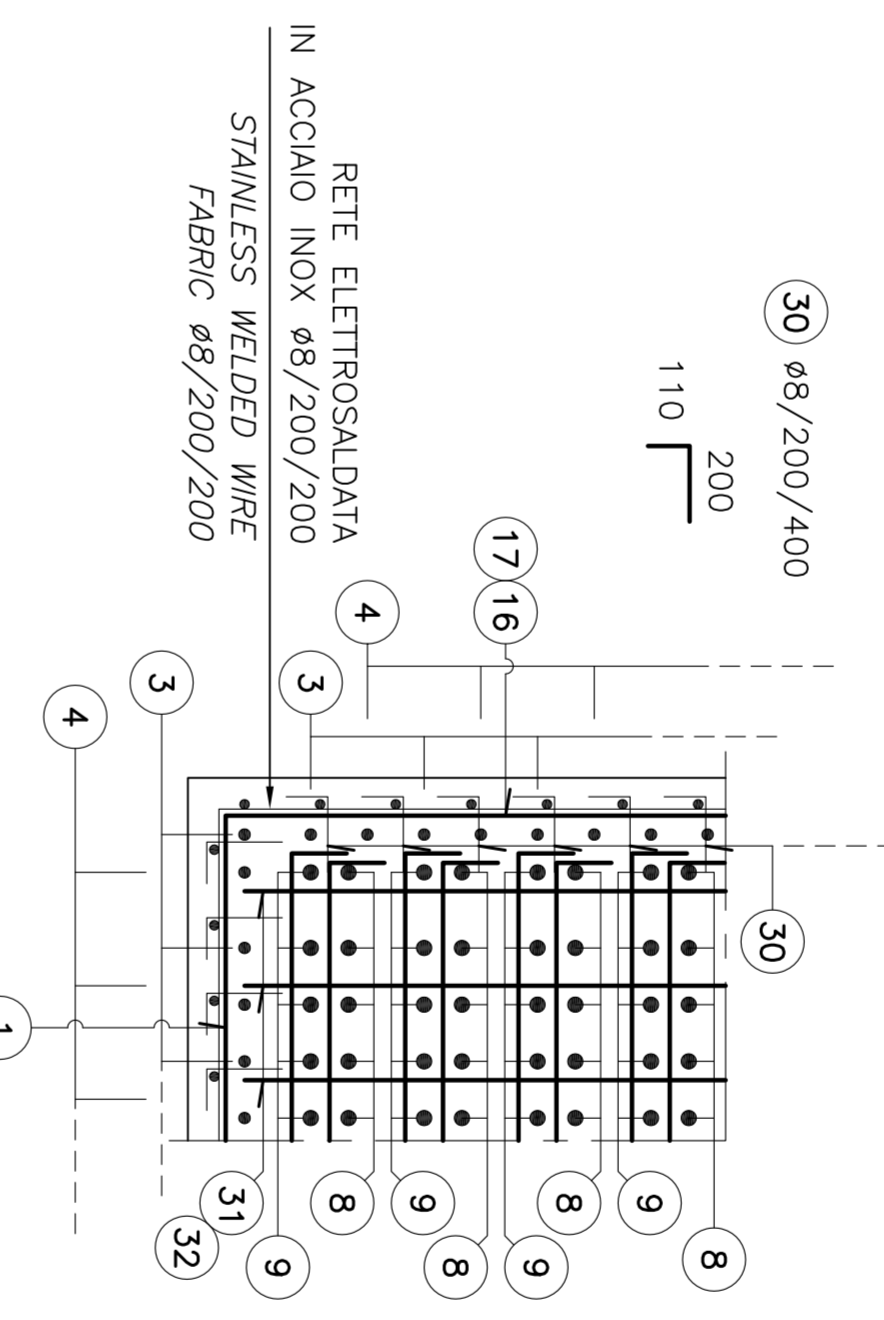
SEZIONE A-A



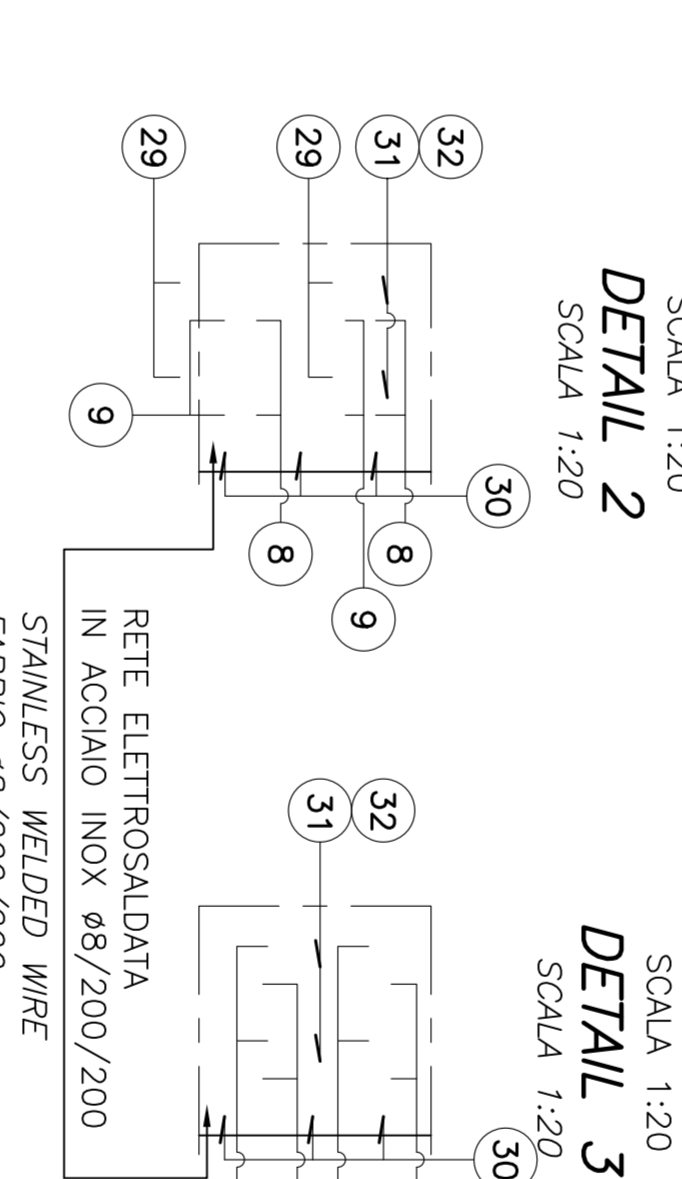
PIANTA DI RIFERIMENTO



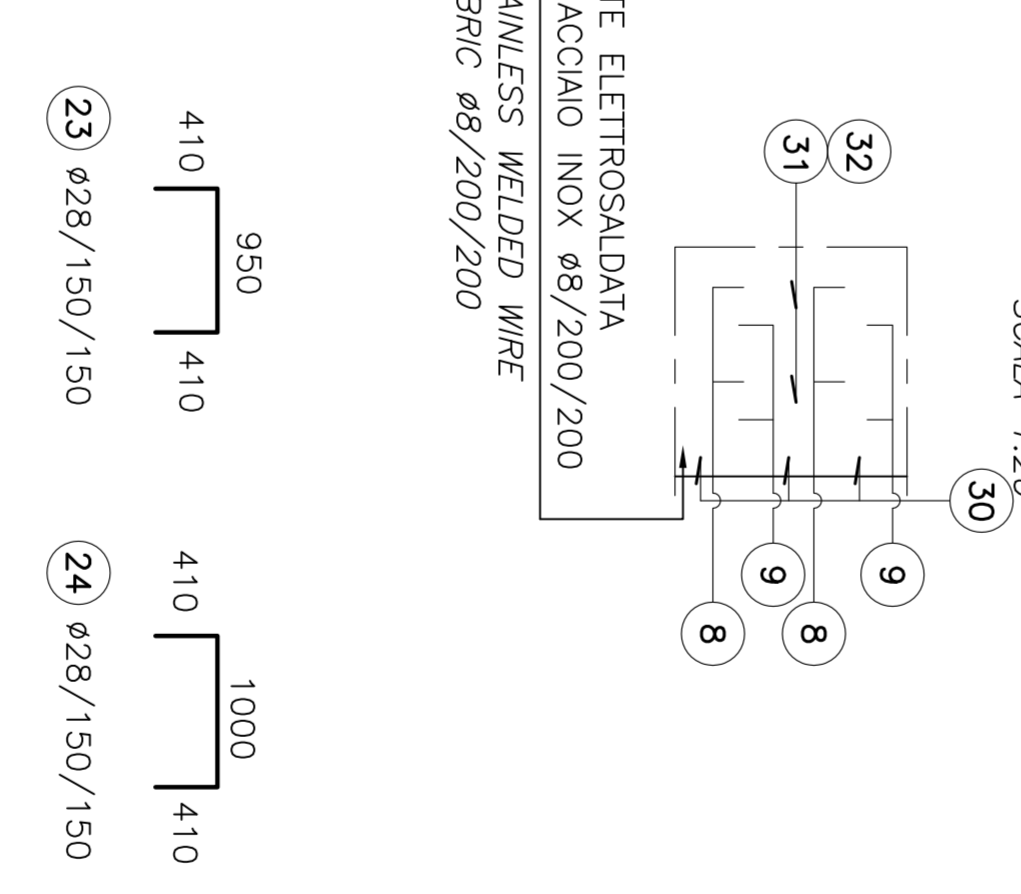
DETTAGLIO 1



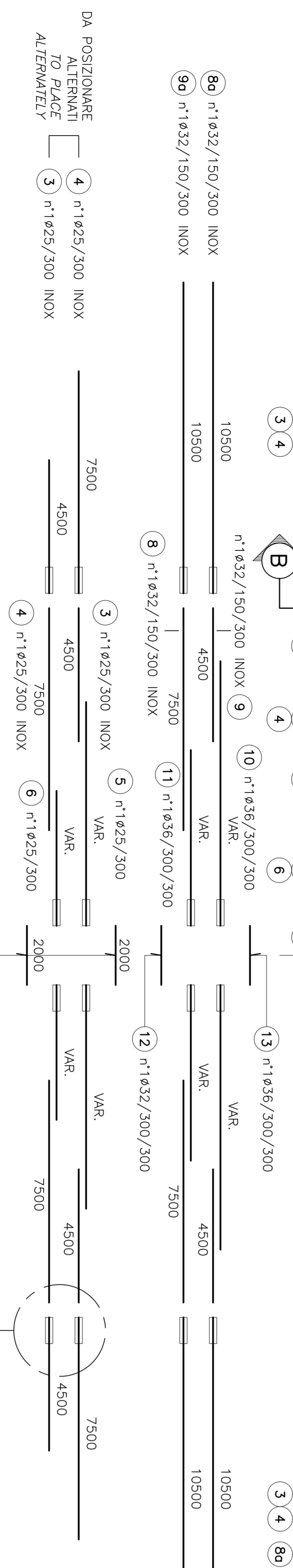
DETTAGLIO 2



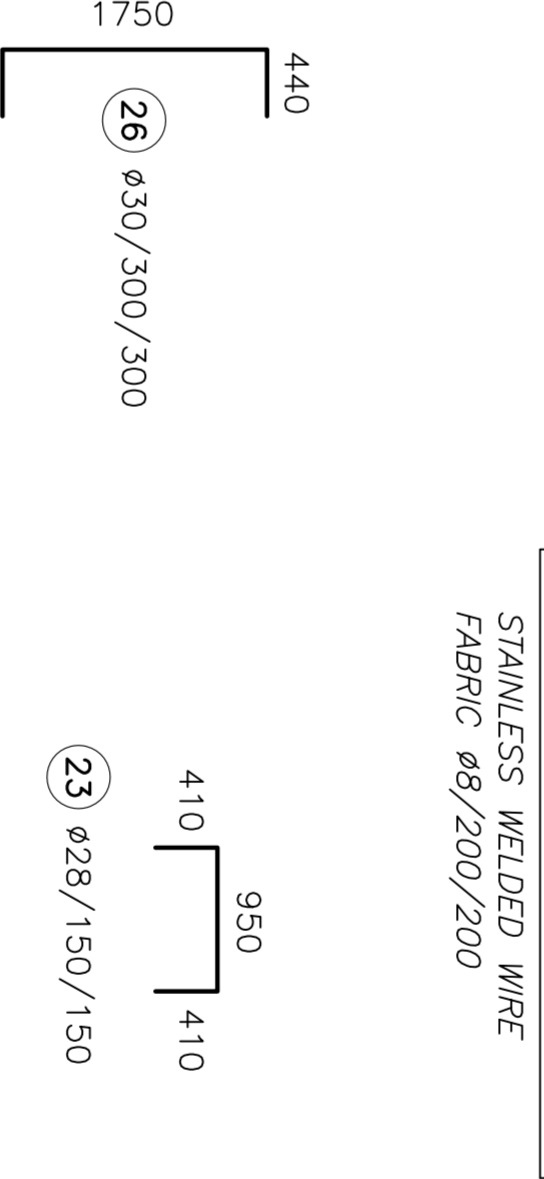
DETTAGLIO 3



SEZIONE B-B



DETTAGLIO 2



DETTAGLIO 3

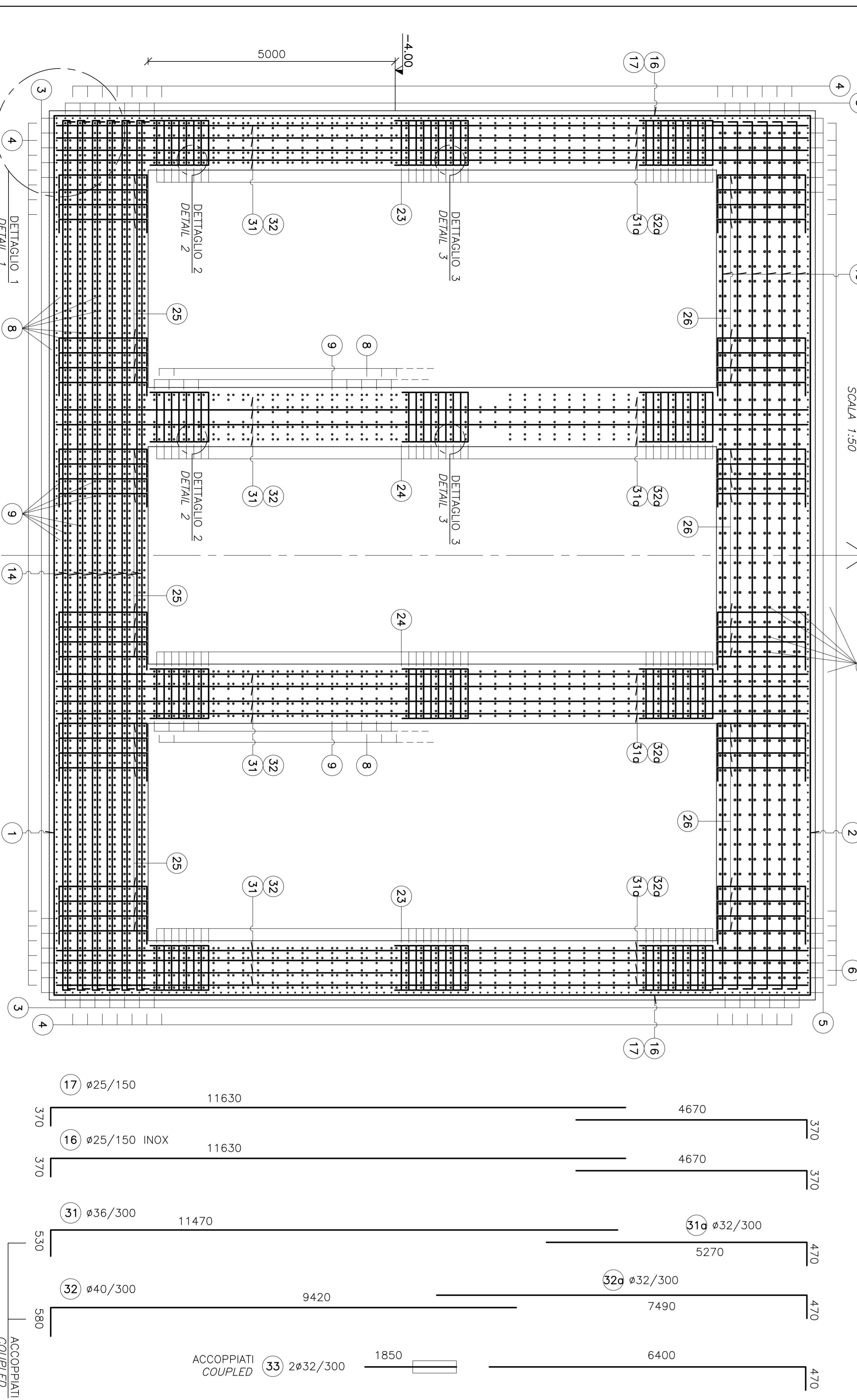
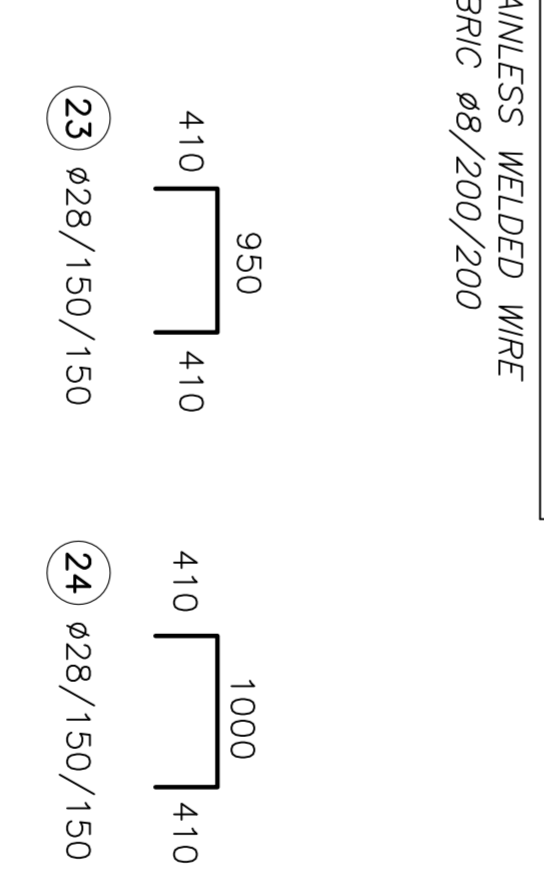


Table listing reinforcement bar specifications: diameter, spacing, length, and lap length. Includes entries for bars 1 through 34, with details for lap splices and alternative dimensions.

PONTE SULLO STRETTO DI MESSINA
PROGETTO DEFINITIVO
Logo of Stritto di Messina and Eurolink.

EUROLINK S.C.A.
SOCIETA' ITALIANA PER CONDOTTE D'ACQUA S.p.A. (Messina)
CONSERVATORIO MUNICIPALITÀ DI MESSINA S.p.A. (Messina)
ISIRIKAWAKA - HARIMA HEAVY INDUSTRIES CO. LTD. (Marsina)
A.S. S.C.S. - CONSORZIO STABILE (Messina)

OPERA DI ATTRAVERSAMENTO
SOTTOSTRUTTURE
FONDAZIONI TORRI
TORRE SICILIA
ARMATURA - TRAVE DI COLLEGAMENTO

PROGETTO
ING. E.A. VIGI
ING. G. MARIANO
ING. G. MARIANO
ING. G. MARIANO
ING. G. MARIANO