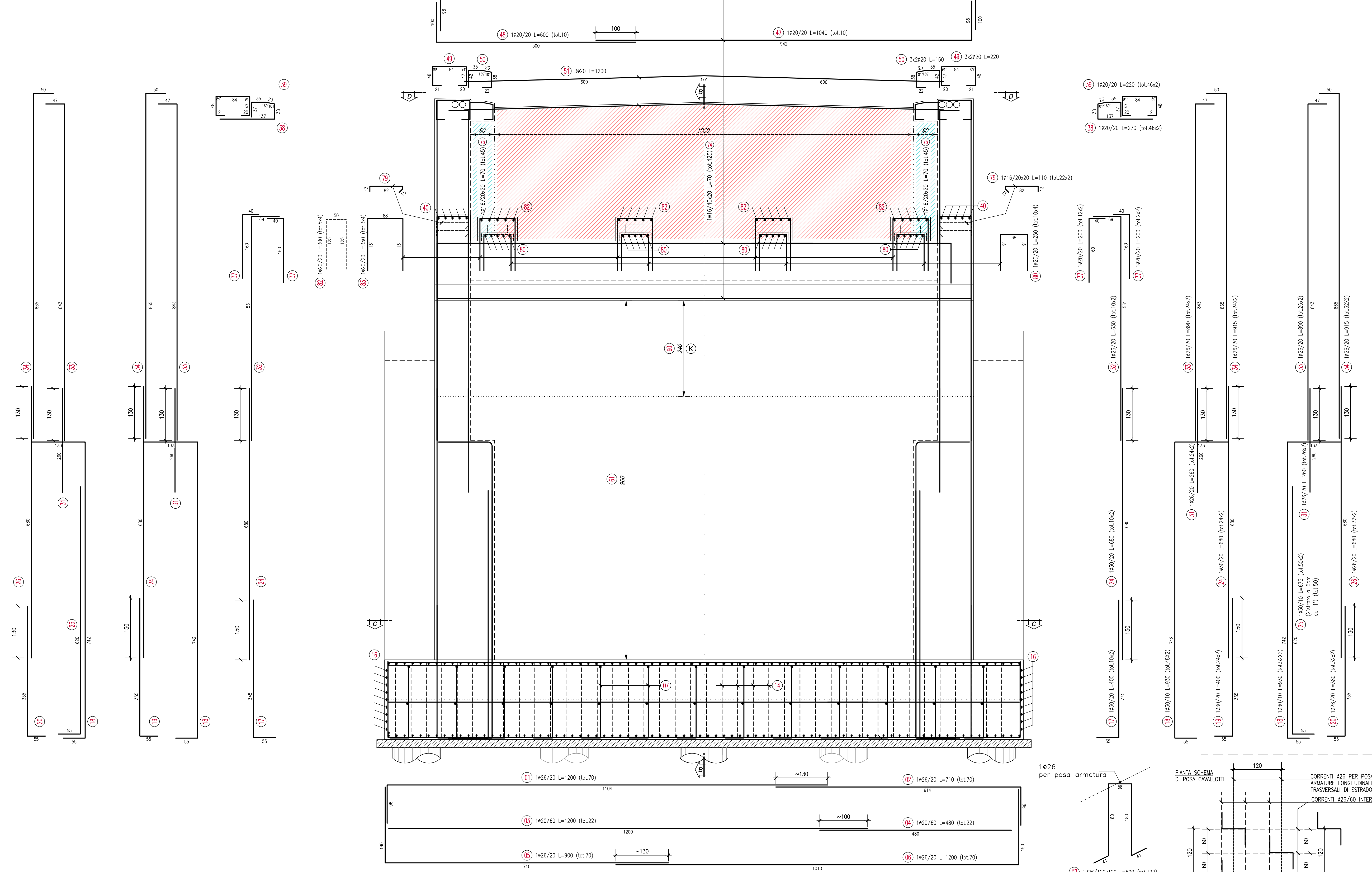
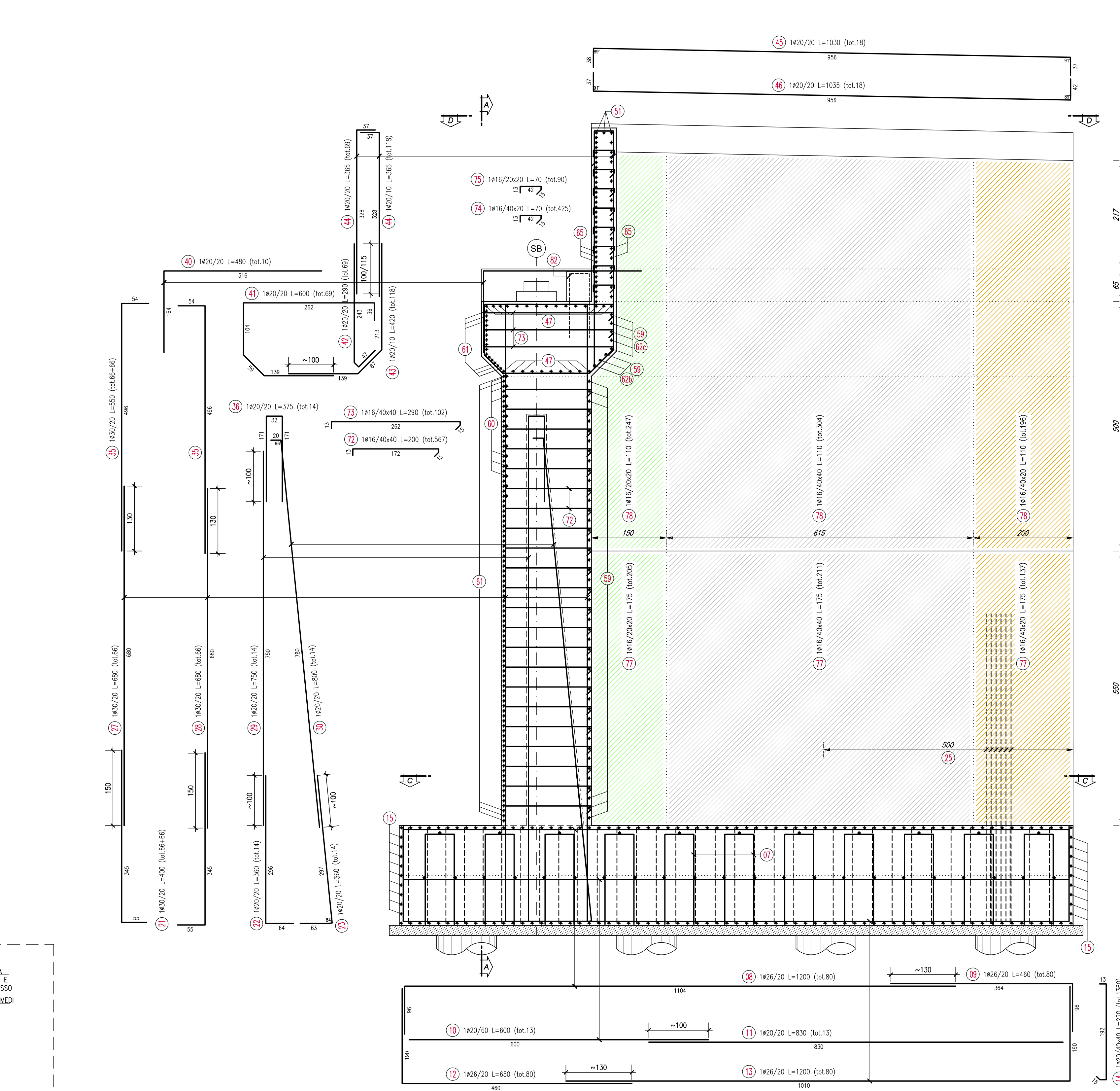


SEZIONE A-A scala 1:50



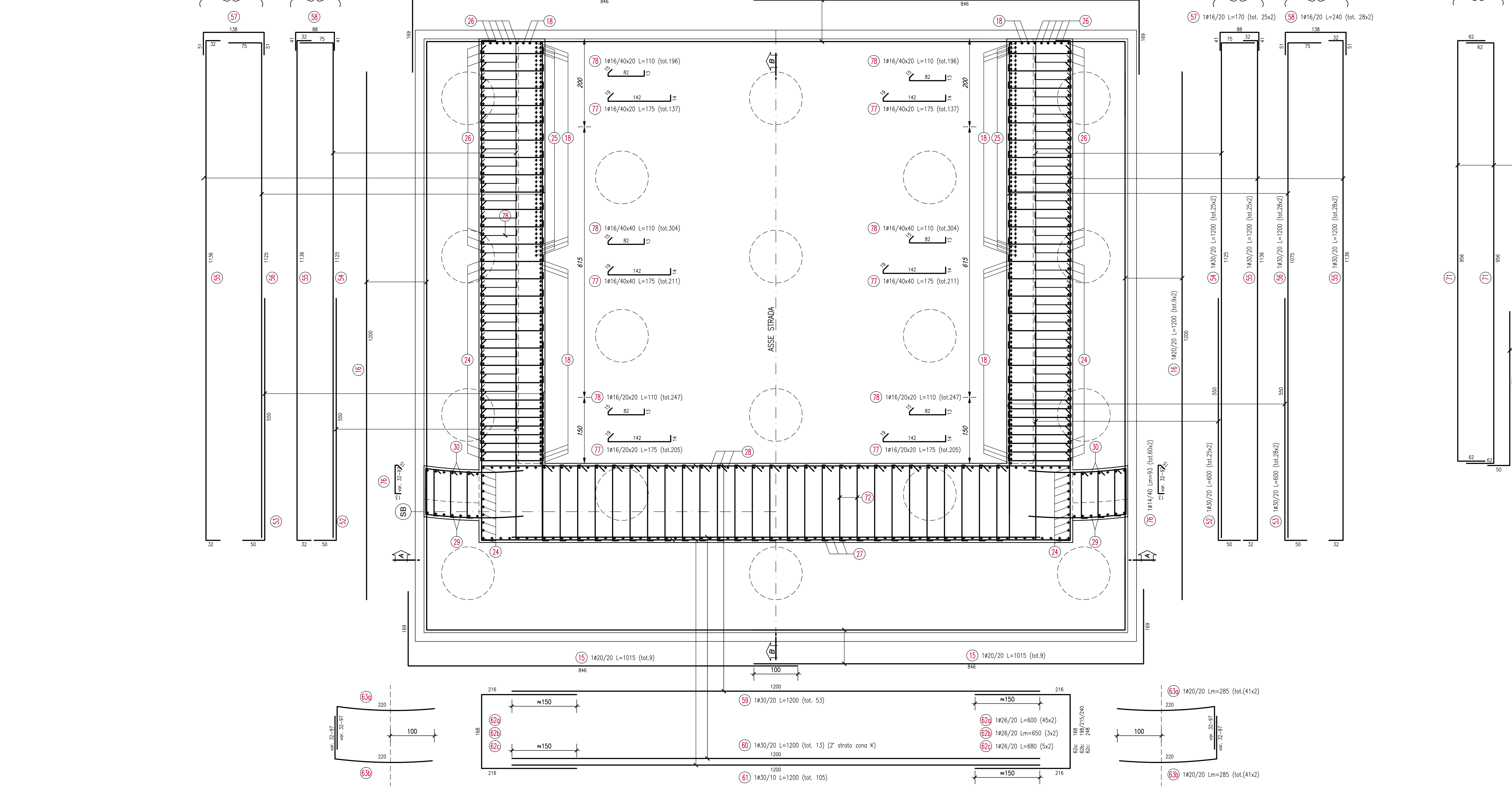
SEZIONE B-B scala 1:50



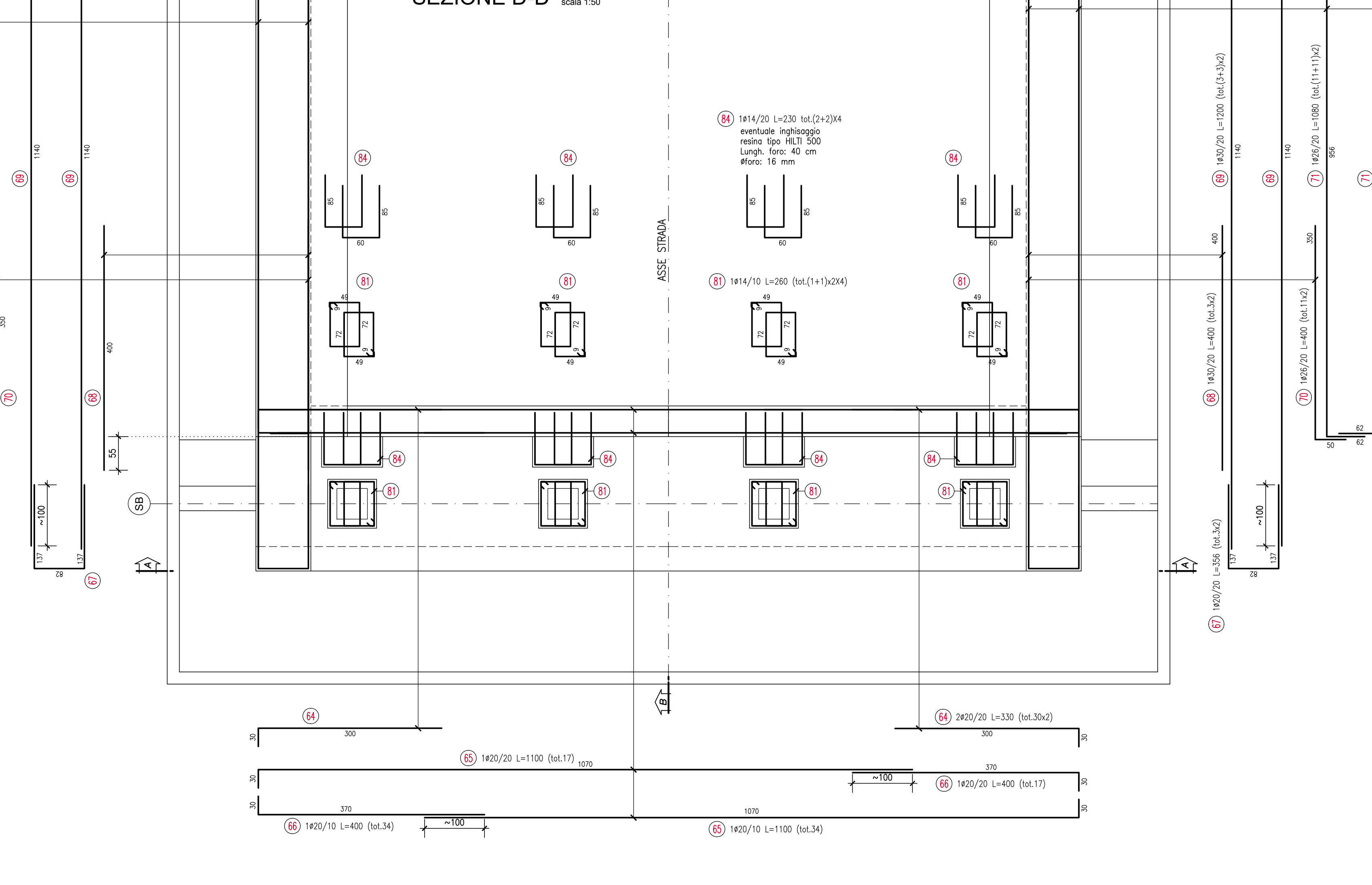
DISTINTA FERRI SPALLA B

Table with columns: POS., NUM. FERRI, D [mm], Layer [cm], Layer [ft], Peso [kg/m], Peso [kg/ft]. It lists reinforcement details for 84 different positions.

SEZIONE C-C scala 1:50



SEZIONE D-D scala 1:50



NOTE
In corrispondenza degli spigoli retti convessi, in presenza di armatura #20mm,
prevedere opportuni smussi 40x40 mm.
Per la tabella materiali si fa riferimento all'elaborato IG51-00-E-CV-TT-0000-00-001

Project information block including: COMMITTENTE (R.F.I. Ferrovie Italiane), GENERAL CONTRACTOR (COCIV), INFRASTRUTTURE FERROVIARIE STRATEGICHE DEFINITE DALLA LEGGE OBIETTIVO N.443/01, and project details for Tratto 0 at Pk 38+765.