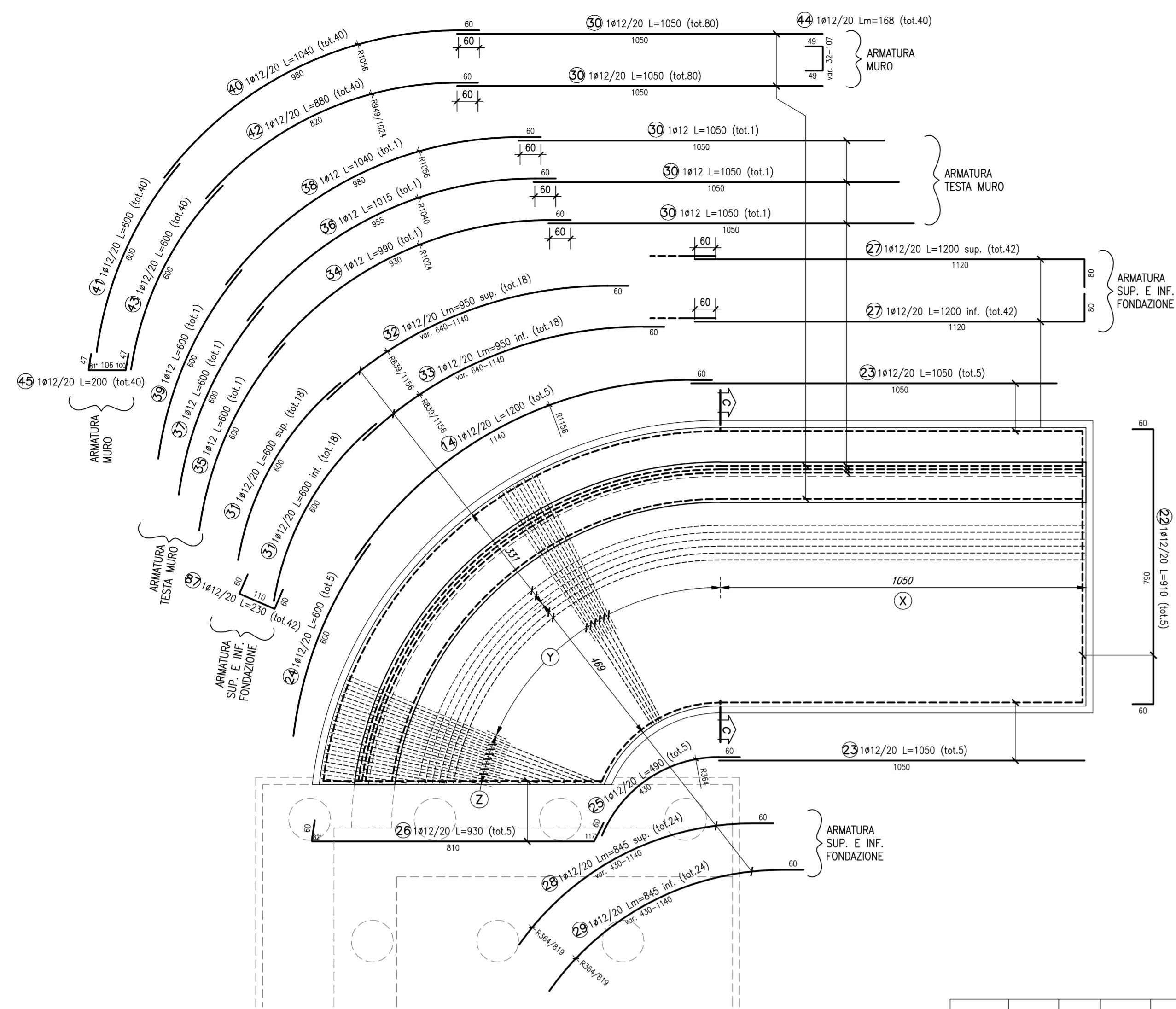
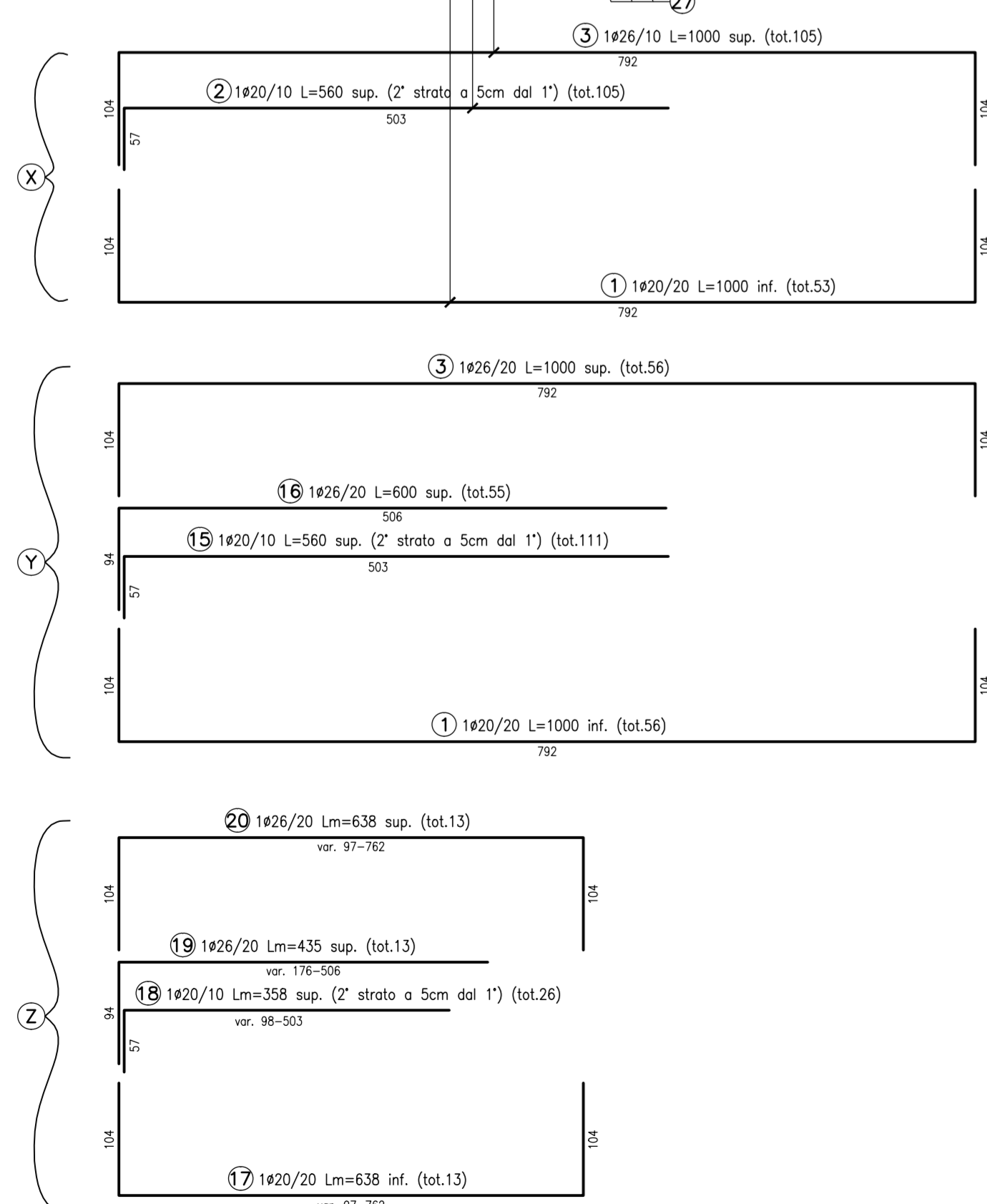
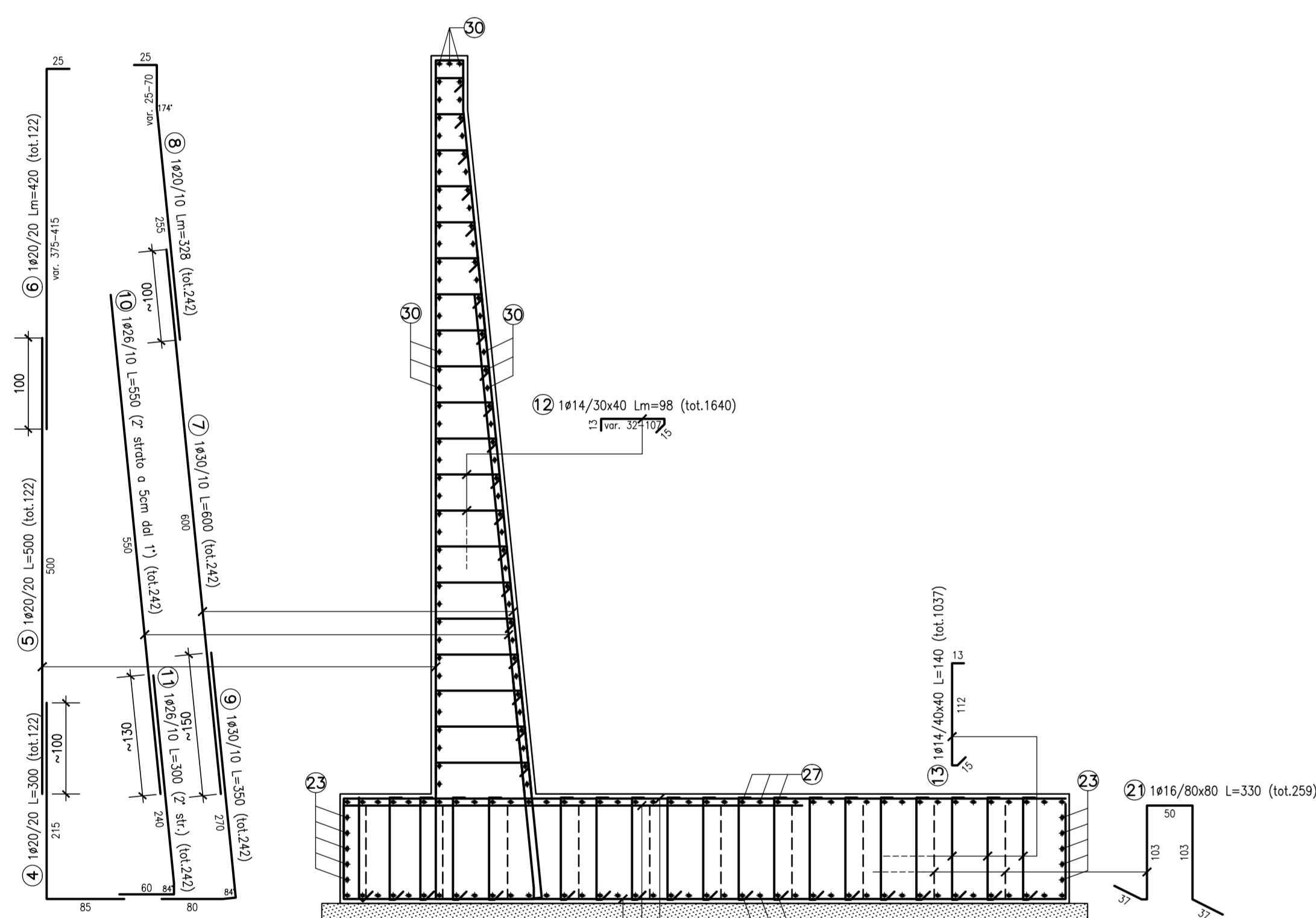


PIANTA MURO "C" scala 1:100

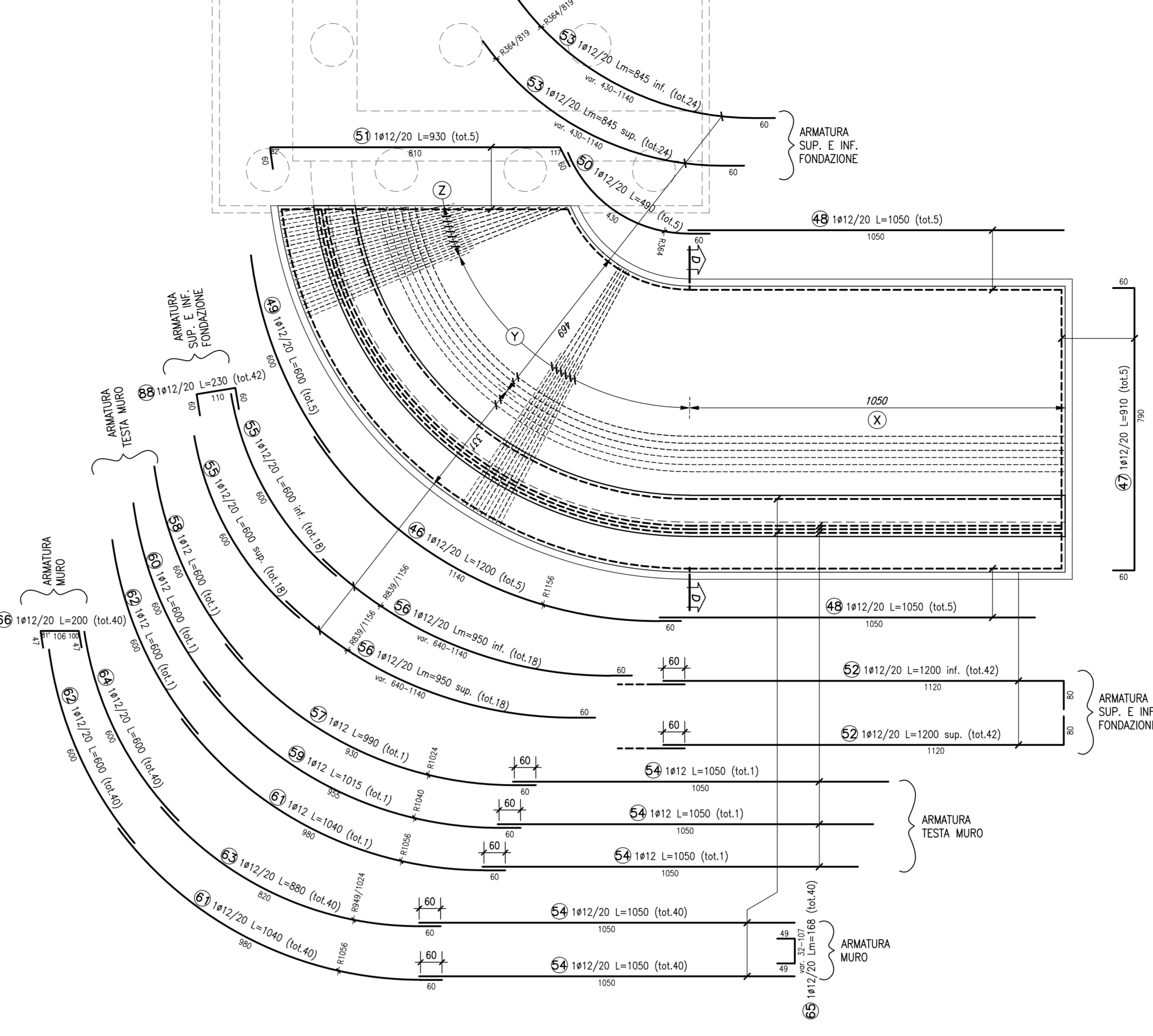


SEZIONE C-C scala 1:50

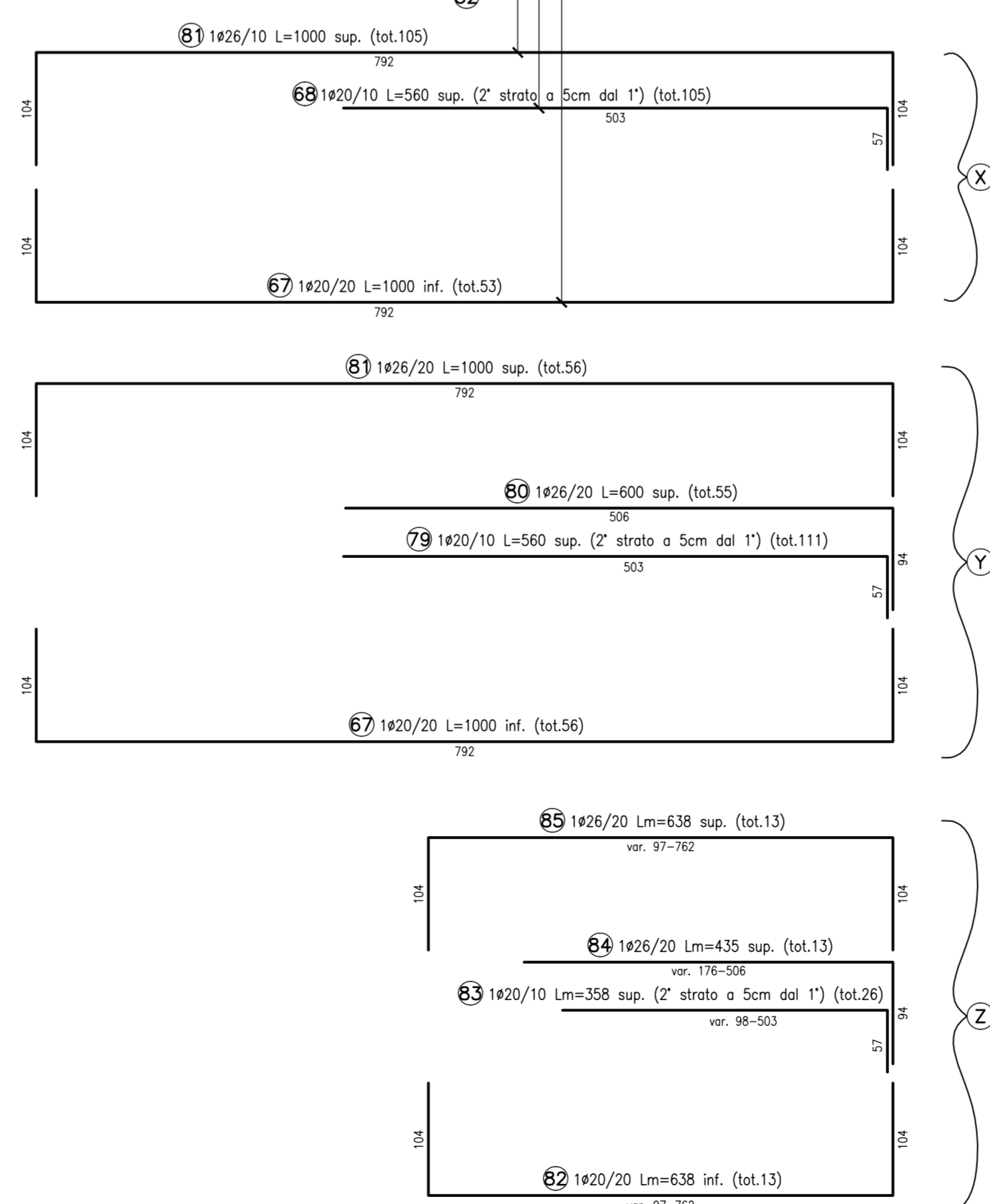
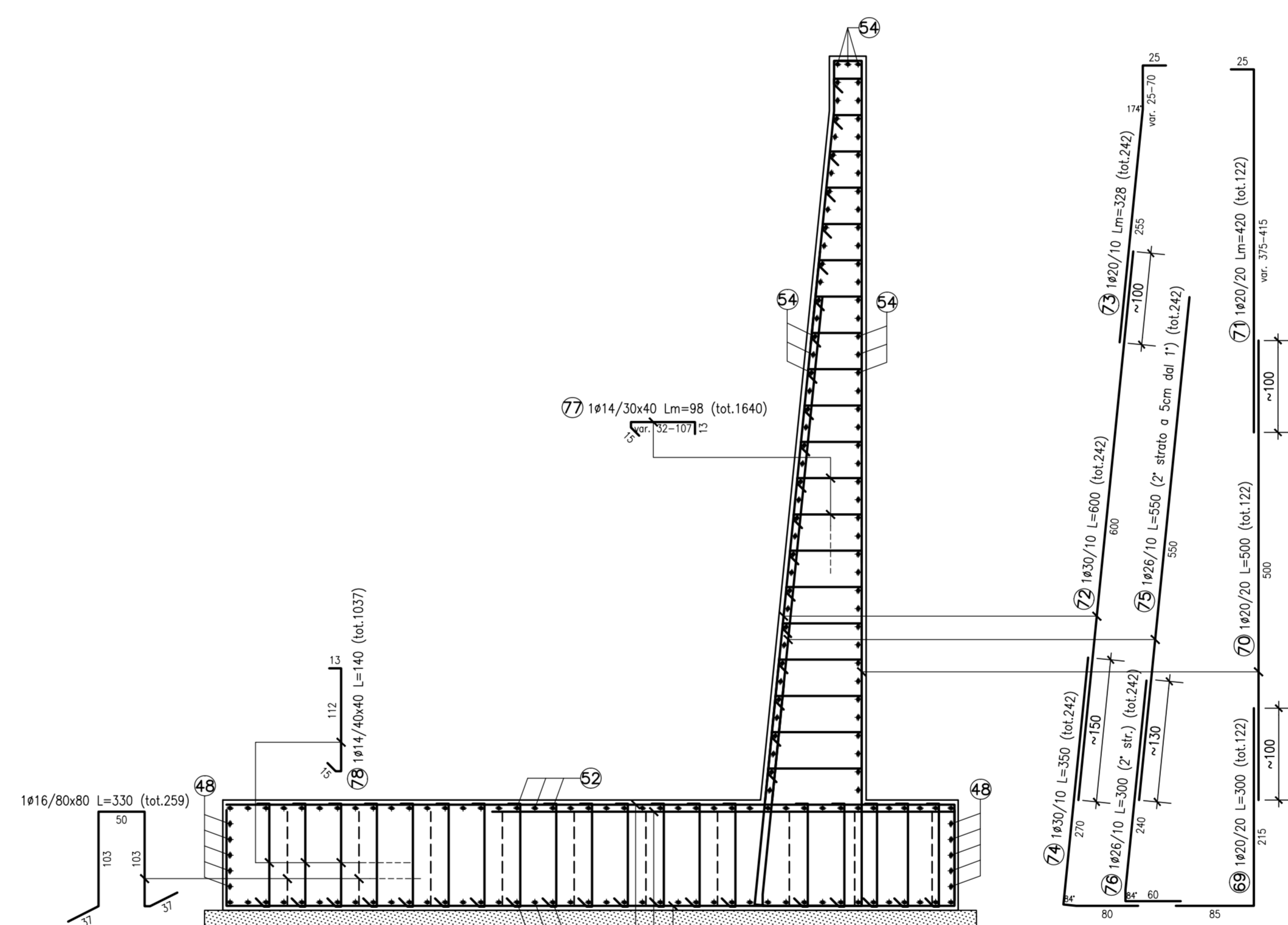


POSIZIONE	N. PEZZI	Ø [mm]	L [cm]	L TOT [m]	PESO [kg]	SCHEMA PEGATURA [cm] (misure al filo esterno)
1	189	20	1000	1990.00	2687.94	[Diagram]
2	195	20	560	588.00	1450.01	[Diagram]
3	161	26	1000	1610.00	670.48	[Diagram]
4	122	20	300	366.00	902.56	[Diagram]
5	122	20	500	610.00	1554.26	[Diagram]
6	122	20	420	510.40	1263.58	[Diagram]
7	242	30	600	1452.00	8951.75	[Diagram]
8	242	20	328	792.55	1954.43	[Diagram]
9	242	30	358	847.00	4700.00	[Diagram]
10	242	26	550	1331.00	5547.61	[Diagram]
11	242	26	300	726.00	3025.97	[Diagram]
12	1640	14	98	1599.00	19315.90	[Diagram]
13	1037	14	140	1451.80	1753.77	[Diagram]
14	5	12	1000	60.00	53.28	[Diagram]
15	111	20	560	621.60	1532.87	[Diagram]
16	55	26	600	330.00	1375.44	[Diagram]
17	13	20	638	82.88	204.37	[Diagram]
18	26	20	358	92.95	229.22	[Diagram]
19	13	26	435	56.55	235.70	[Diagram]
20	13	26	638	82.88	345.42	[Diagram]
21	259	16	330	854.70	1348.72	[Diagram]
22	5	12	910	45.50	44.10	[Diagram]
23	10	12	1050	105.00	93.24	[Diagram]
24	5	12	600	30.00	26.64	[Diagram]
25	5	12	490	24.50	21.76	[Diagram]
26	5	12	930	46.50	44.29	[Diagram]
27	84	12	1200	1007.73	894.87	[Diagram]
28	24	12	845	202.80	180.09	[Diagram]
29	24	12	845	202.80	180.09	[Diagram]
30	163	12	1050	1711.50	1519.81	[Diagram]
31	36	12	600	216.00	191.81	[Diagram]
32	18	12	950	171.00	151.85	[Diagram]
33	18	12	950	171.00	151.85	[Diagram]
34	1	12	990	9.90	8.79	[Diagram]
35	1	12	600	6.00	5.33	[Diagram]
36	1	12	1015	10.15	9.01	[Diagram]
37	1	12	600	6.00	5.33	[Diagram]
38	1	12	1040	10.40	9.23	[Diagram]
39	1	12	600	6.00	5.33	[Diagram]
40	40	12	1040	416.00	369.41	[Diagram]
41	40	12	600	240.00	213.12	[Diagram]
42	40	12	880	352.00	312.58	[Diagram]
43	40	12	600	240.00	213.12	[Diagram]
44	40	12	168	67.00	59.58	[Diagram]
45	40	12	200	80.00	71.04	[Diagram]
46	40	12	230	92.00	81.78	[Diagram]
47	42	12	230	96.60	85.18	[Diagram]
PESO TOTALE:					51675.60	

PIANTA MURO "D" scala 1:100



SEZIONE D-D scala 1:50



POSIZIONE	N. PEZZI	Ø [mm]	L [cm]	L TOT [m]	PESO [kg]	SCHEMA PEGATURA [cm] (misure al filo esterno)
44	5	12	1000	60.00	53.28	[Diagram]
47	5	12	910	45.50	44.10	[Diagram]
48	10	12	1050	105.00	93.24	[Diagram]
49	5	12	600	30.00	26.64	[Diagram]
50	5	12	490	24.50	21.76	[Diagram]
51	5	12	930	46.50	44.29	[Diagram]
52	84	12	1200	1007.73	894.87	[Diagram]
53	48	12	845	405.60	360.17	[Diagram]
54	63	12	1050	661.50	573.89	[Diagram]
55	36	12	600	216.00	191.81	[Diagram]
56	36	12	950	342.00	303.70	[Diagram]
57	1	12	990	9.90	8.79	[Diagram]
58	1	12	600	6.00	5.33	[Diagram]
59	1	12	1015	10.15	9.01	[Diagram]
60	1	12	600	6.00	5.33	[Diagram]
61	41	12	1040	424.00	378.64	[Diagram]
62	41	12	600	246.00	218.45	[Diagram]
63	40	12	880	352.00	312.58	[Diagram]
64	40	12	600	240.00	213.12	[Diagram]
65	40	12	168	67.00	59.58	[Diagram]
66	40	12	200	80.00	71.04	[Diagram]
67	189	20	1000	1990.00	2687.94	[Diagram]
68	195	20	560	588.00	1450.01	[Diagram]
69	122	20	300	366.00	902.56	[Diagram]
70	122	20	500	610.00	1554.26	[Diagram]
71	122	20	420	510.40	1263.58	[Diagram]
72	242	30	600	1452.00	8951.75	[Diagram]
73	242	20	328	792.55	1954.43	[Diagram]
74	242	30	358	847.00	4700.00	[Diagram]
75	242	26	550	1331.00	5547.61	[Diagram]
76	242	26	300	726.00	3025.97	[Diagram]
77	1640	14	98	1599.00	19315.90	[Diagram]
78	1037	14	140	1451.80	1753.77	[Diagram]
79	111	20	560	621.60	1532.87	[Diagram]
80	55	26	600	330.00	1375.44	[Diagram]
81	13	20	638	82.88	204.37	[Diagram]
82	13	20	358	92.95	229.22	[Diagram]
83	13	26	435	56.55	235.70	[Diagram]
84	13	26	638	82.88	345.42	[Diagram]
85	259	16	330	854.70	1348.72	[Diagram]
86	5	12	910	45.50	44.10	[Diagram]
87	10	12	1050	105.00	93.24	[Diagram]
88	5	12	600	30.00	26.64	[Diagram]
89	5	12	490	24.50	21.76	[Diagram]
90	5	12	930	46.50	44.29	[Diagram]
91	5	12	1015	10.15	9.01	[Diagram]
92	5	12	600	6.00	5.33	[Diagram]
93	1	12	990	9.90	8.79	[Diagram]
94	1	12	600	6.00	5.33	[Diagram]
95	1	12	1015	10.15	9.01	[Diagram]
96	1	12	600	6.00	5.33	[Diagram]
97	1	12	1040	10.40	9.23	[Diagram]
98	1	12	600	6.00	5.33	[Diagram]
99	40	12	1040	416.00	369.41	[Diagram]
100	40	12	600	240.00	213.12	[Diagram]
101	40	12	880	352.00	312.58	[Diagram]
102	40	12	600	240.00	213.12	[Diagram]
103	40	12	168	67.00	59.58	[Diagram]
104	40	12	200	80.00	71.04	[Diagram]
105	40	12	230	92.00	81.78	[Diagram]
106	42	12	230	96.60	85.18	[Diagram]
PESO TOTALE:					50929.68	

NOTA

Per la tabella materiali si fa riferimento all'elaborato IG51-00-E-CV-TT-0C00-00-001

COMMITTENTE:



ALTA Sorveglianza:



GENERAL CONTRACTOR:



INFRASTRUTTURE FERROVIARIE STRATEGICHE DEFINITE DALLA LEGGE OBIETTIVO N.443/01

TRATTA A.V./A.C. TERZO VALICO DEI GIOVI PROGETTO ESECUTIVO

Cavalcaferrovia SP 152 Linea III Valico alla Pk 38+765 - Tratto 0

Muri di sottoscampa Armatura - tav. 2

GENERAL CONTRACTOR		DIRETTORE LAVORI		SCALA:			
COCIV Ing. M. Mestri				1:50			
COMMESSA	LOTTO	FASE	ENTE	TIPO DOC.	OPERAZIONE/OPERA	PROGR.	REV.
IG51	04	E	CV	BB	IV140X	102	A
PROGETTAZIONE							
Rev.	Descrizione emissione	Redatto	Data	Verificato	Data	Progettista	Data
A00	Prima emissione	COCIV	25/07/2019	COCIV	25/07/2019	A. Marcella	25/07/2019
Nome File: IG51-00-E-CV-TT-0C00-00-001-000 CUP: F31H22000000000							