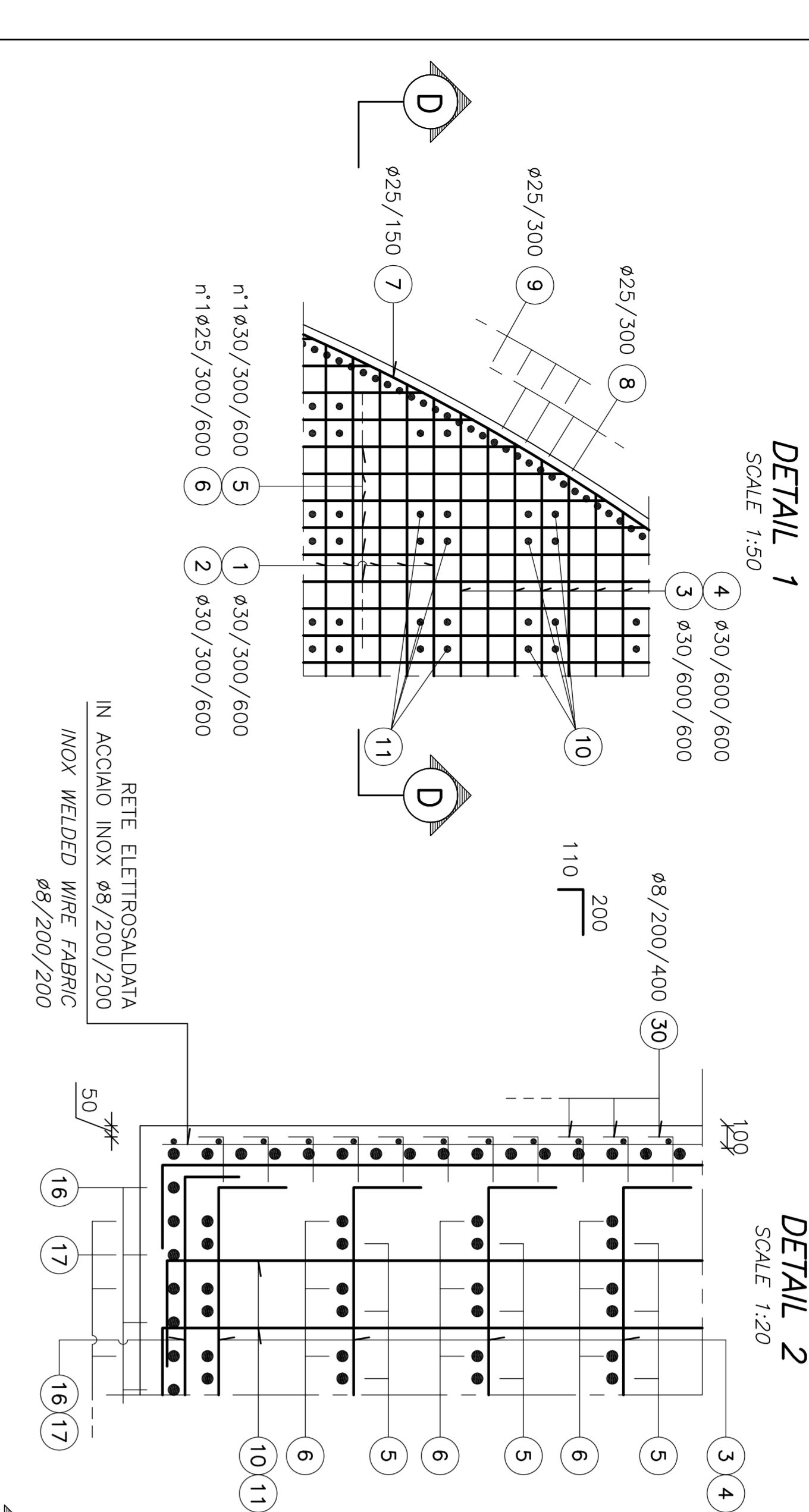
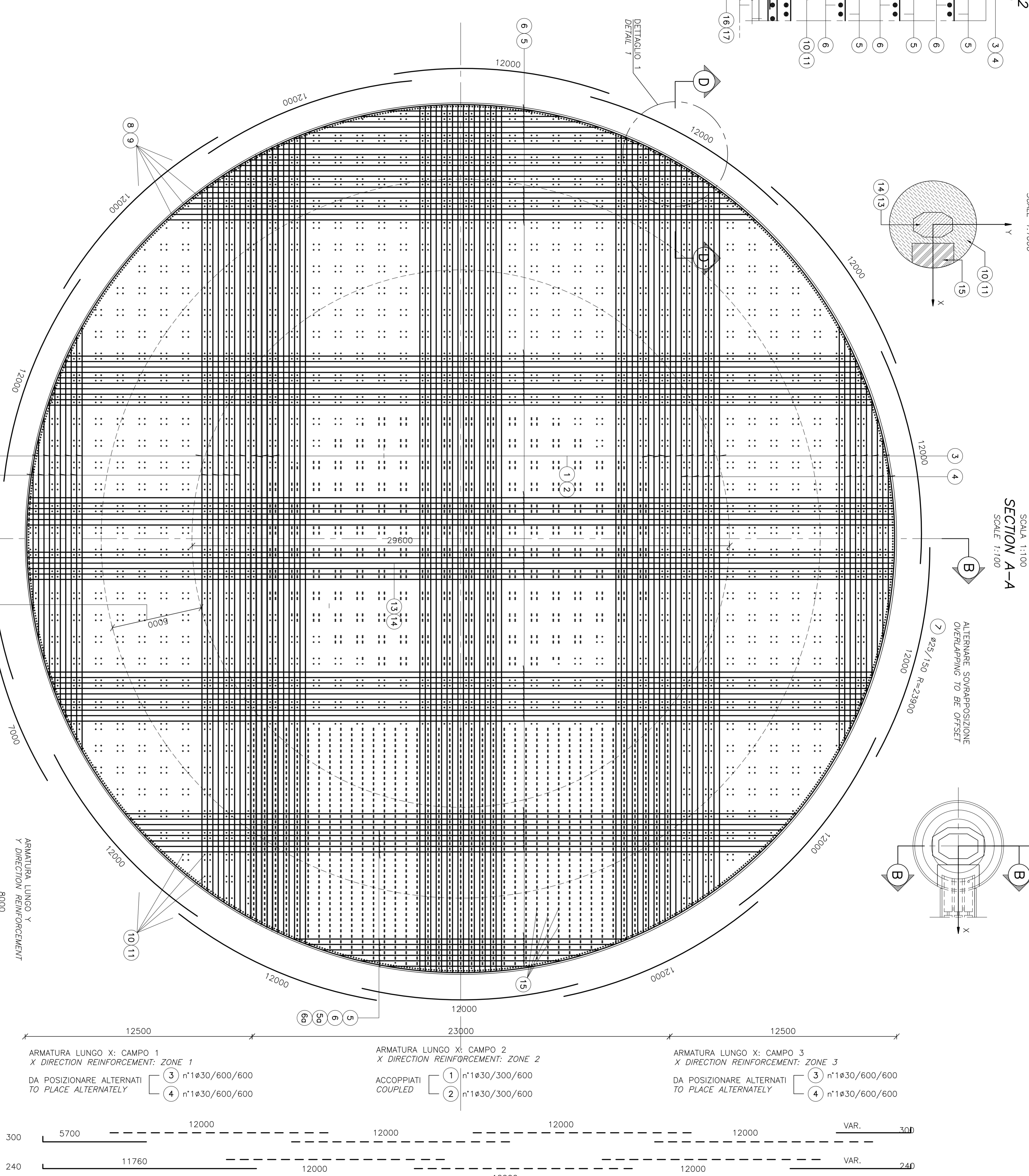


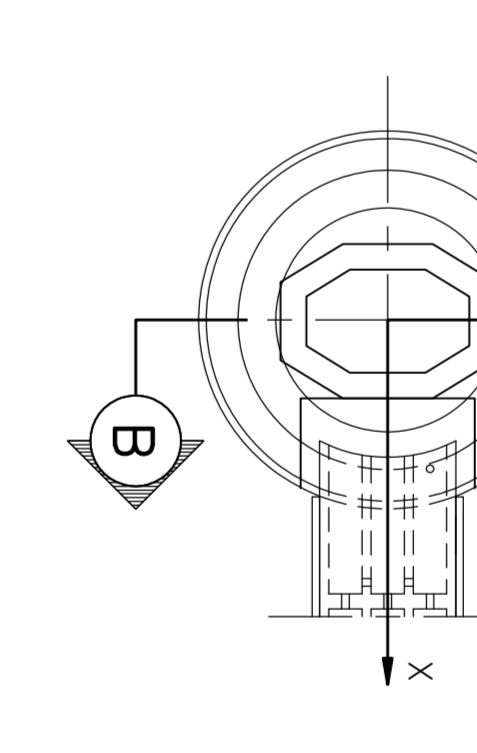
PIANTA DI RIFERIMENTO  
PER ARMATURA VERTICALE  
REFERENCE PLAN  
FOR VERTICAL REINFORCEMENT  
SCALE 1:1000



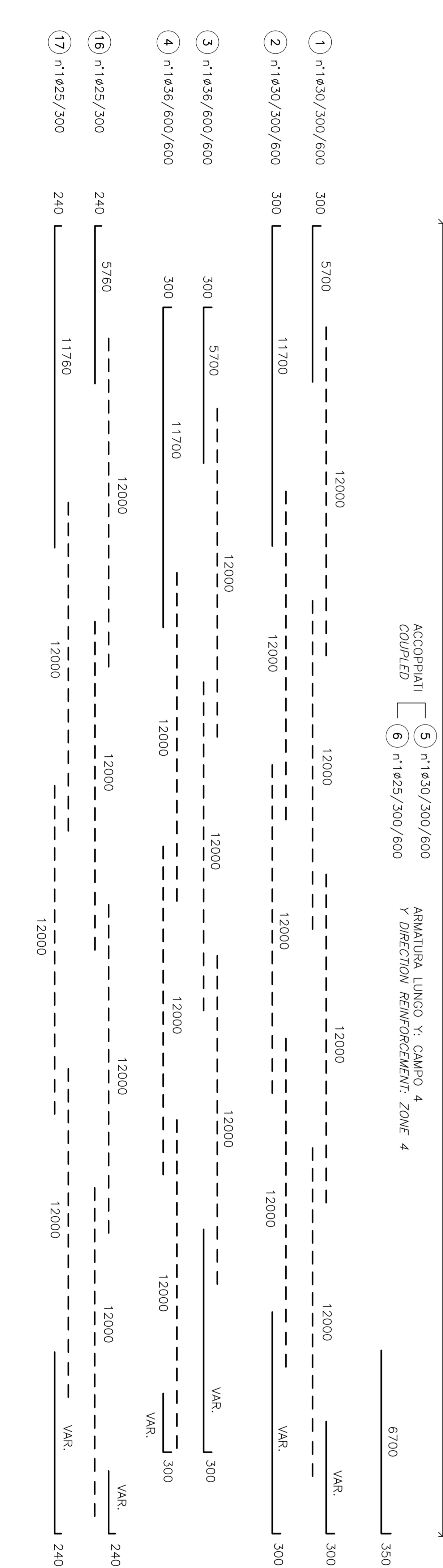
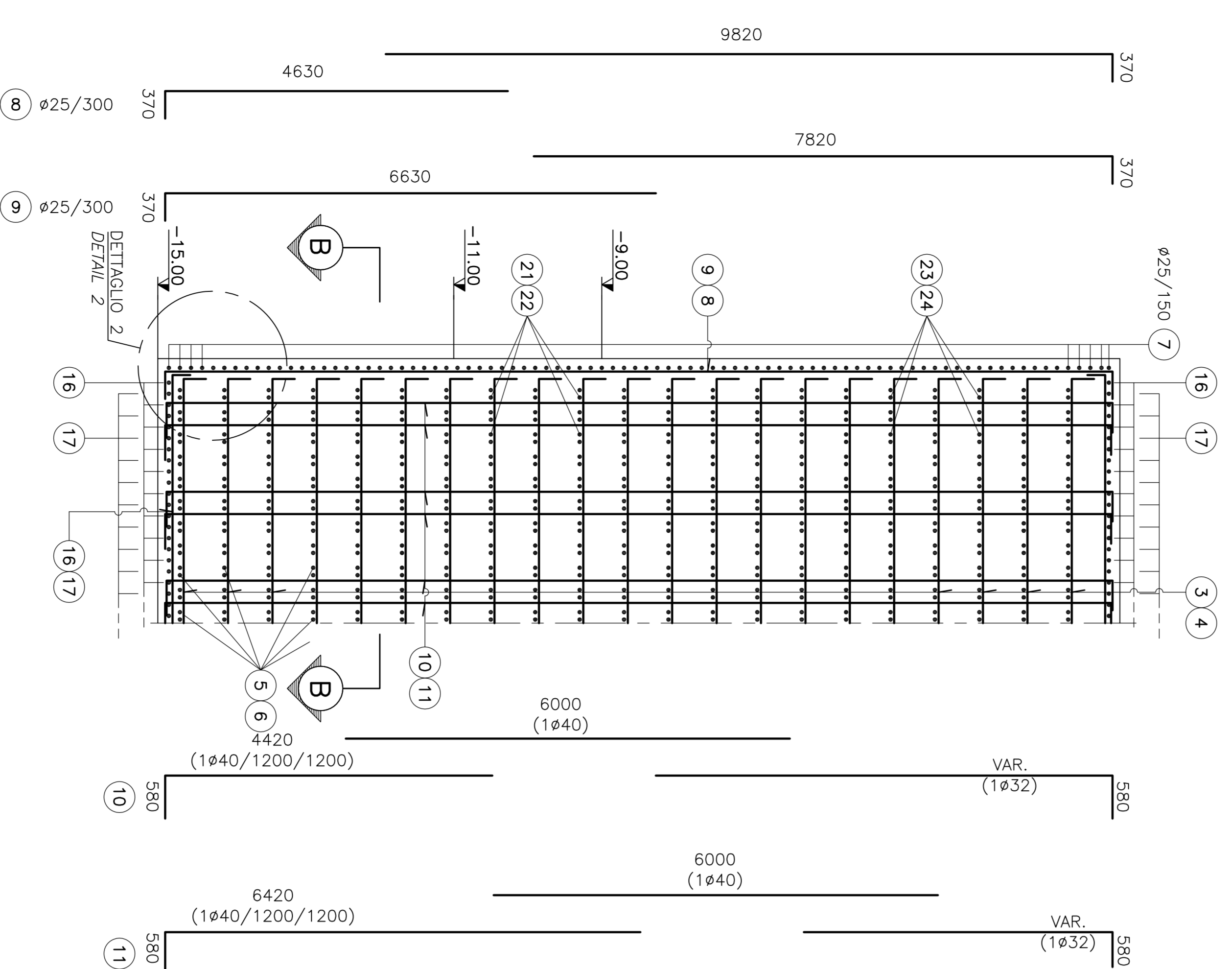
PIANTA DI RIFERIMENTO  
REFERENCE PLAN  
SCALE 1:1000



SEZIONE A-A  
SCALE 1:100



SEZIONE D-D  
SCALE 1:50



NOTE GENERALI

**NOTE:**  
TUTTE LE DIMENSIONI SONO IN MILLIMETRI.  
DIMENSIONS: ALL THE DIMENSIONS ARE IN MILLIMETERS.  
EXCEPT WHERE OTHERWISE INDICATED.  
ALL LEVELS ARE IN METERS ABOVE SEA LEVEL.  
-NOTE 1: COVER 100MM ON ORDINARY REINFORCEMENT AND 50MM ON SURFACE STAINLESS STEEL.  
-NOTE 2: MEAN REINFORCEMENT RATIO 200 kg/m<sup>3</sup> VALUE REDUCED OF 10% AND SUBJECTED TO CONFIRMATION BY NON-LINEAR THERMO-MECHANICAL ANALYSIS TO BE PERFORMED IN EXECUTIVE DESIGN.

QUESTO ELABORATO GRATICO VA LETTO INSIEME A  
TUTTE LE ALTRE TAVOLE DI ARMATURA.  
THIS DRAWING TO BE READ IN CONJUNCTION WITH  
TOGETHER WITH AN THE OTHER REINFORCEMENT TABLES:  
4-5232\_CG1001-PWADPST-F31C000000-03  
4-5233\_CG1001-PWADPST-F31C000000-04  
4-5234\_CG1001-PWADPST-F31C000000-04

**Stretto di Messina**  
EUROLINK S.C.A.  
PROGETTO DEFINITIVO

**OPERA DI ATTRAVERSAMENTO**  
FONDAZIONI TORRI  
TORRE CALABRIA  
ARMATURA - PIASTRA DI FONDAZIONE, SEZIONE E DETTAGGI

**PROGETTAZIONE**  
COWI  
EUROLINK S.C.A.  
SOCIETA' ITALIANA PER CONOTTE (VACUUM SPA, (Milano))  
COOPERATIVA INNOVATION E SICUREZZA (Milano)  
ISHIKAWAKI, HANBA HEAVY INDUSTRIES CO. LTD. (Milano)  
A&S S.p.A. CONSULENZA STRUTTURALE (Milano)