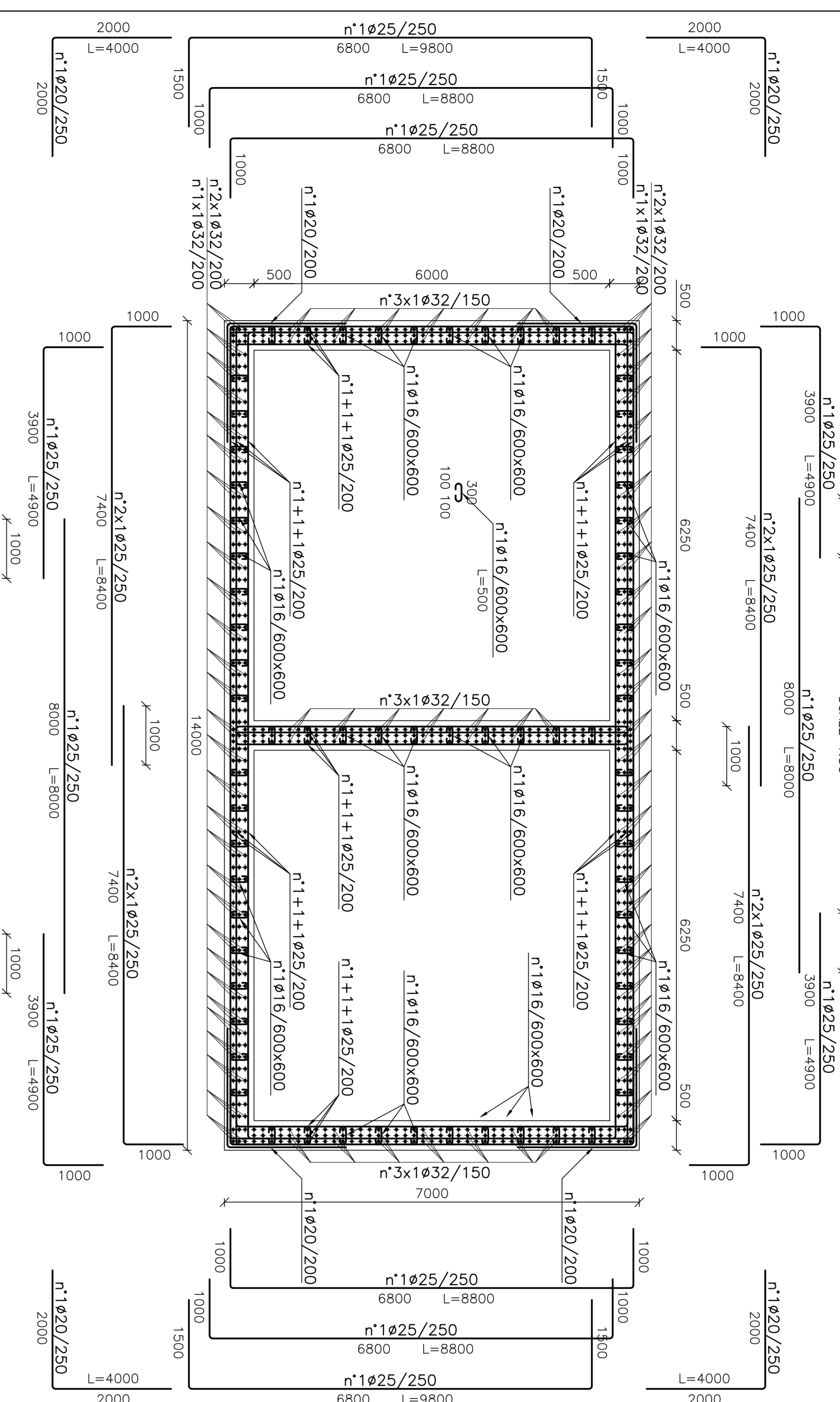
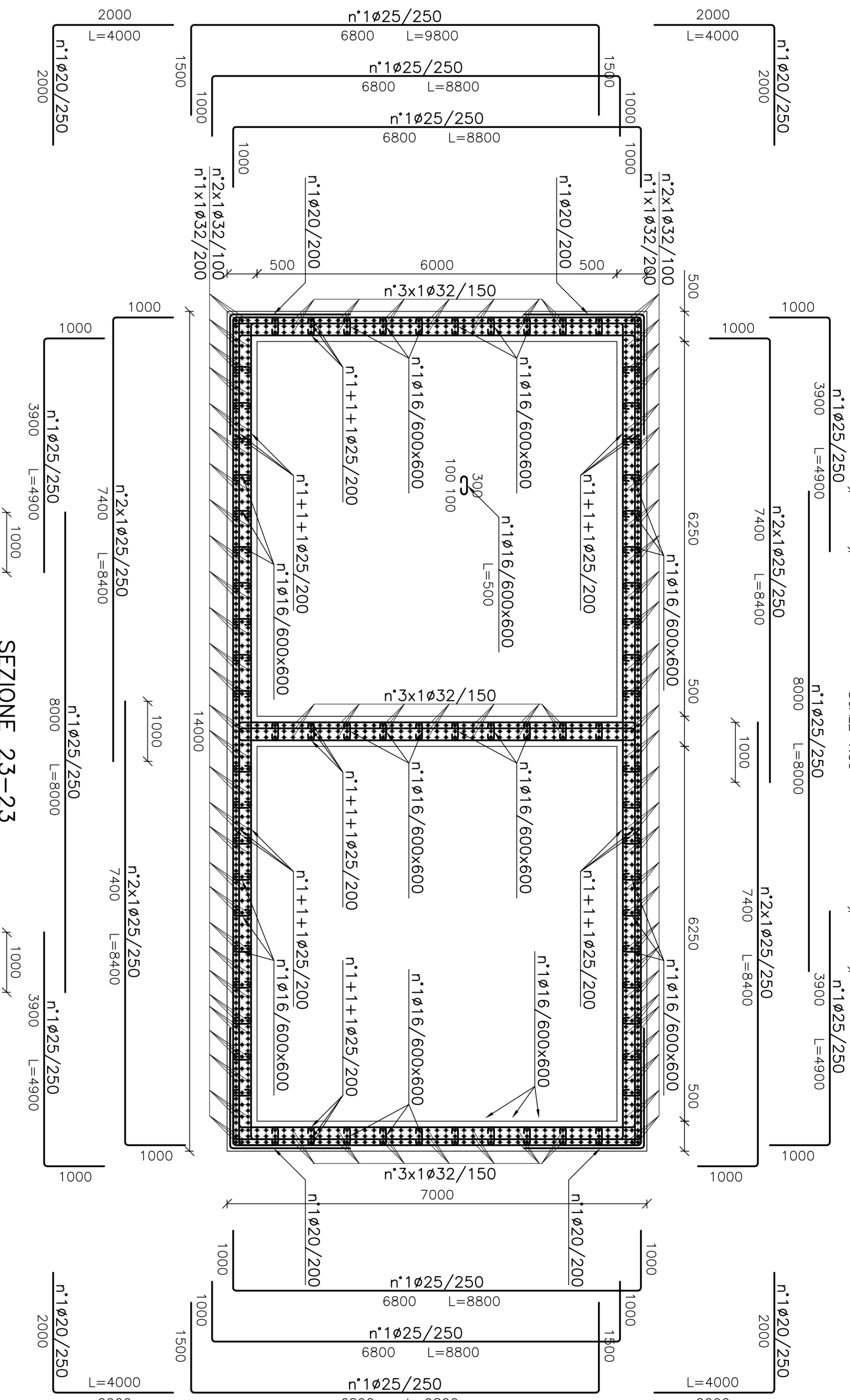


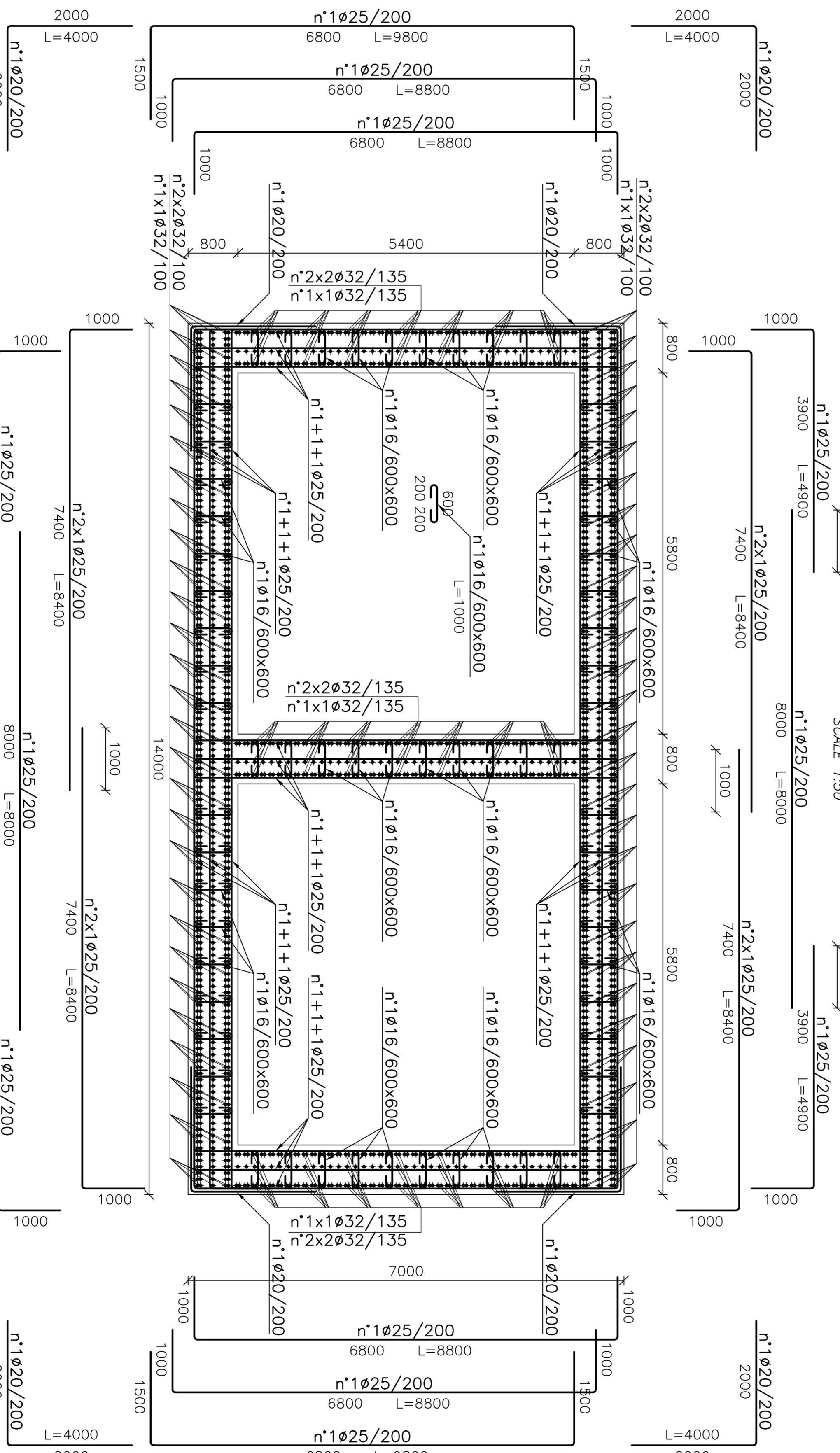
SEZIONE 24-24
 SCALE 1:50
SECTION 24-24
 SCALE 1:50



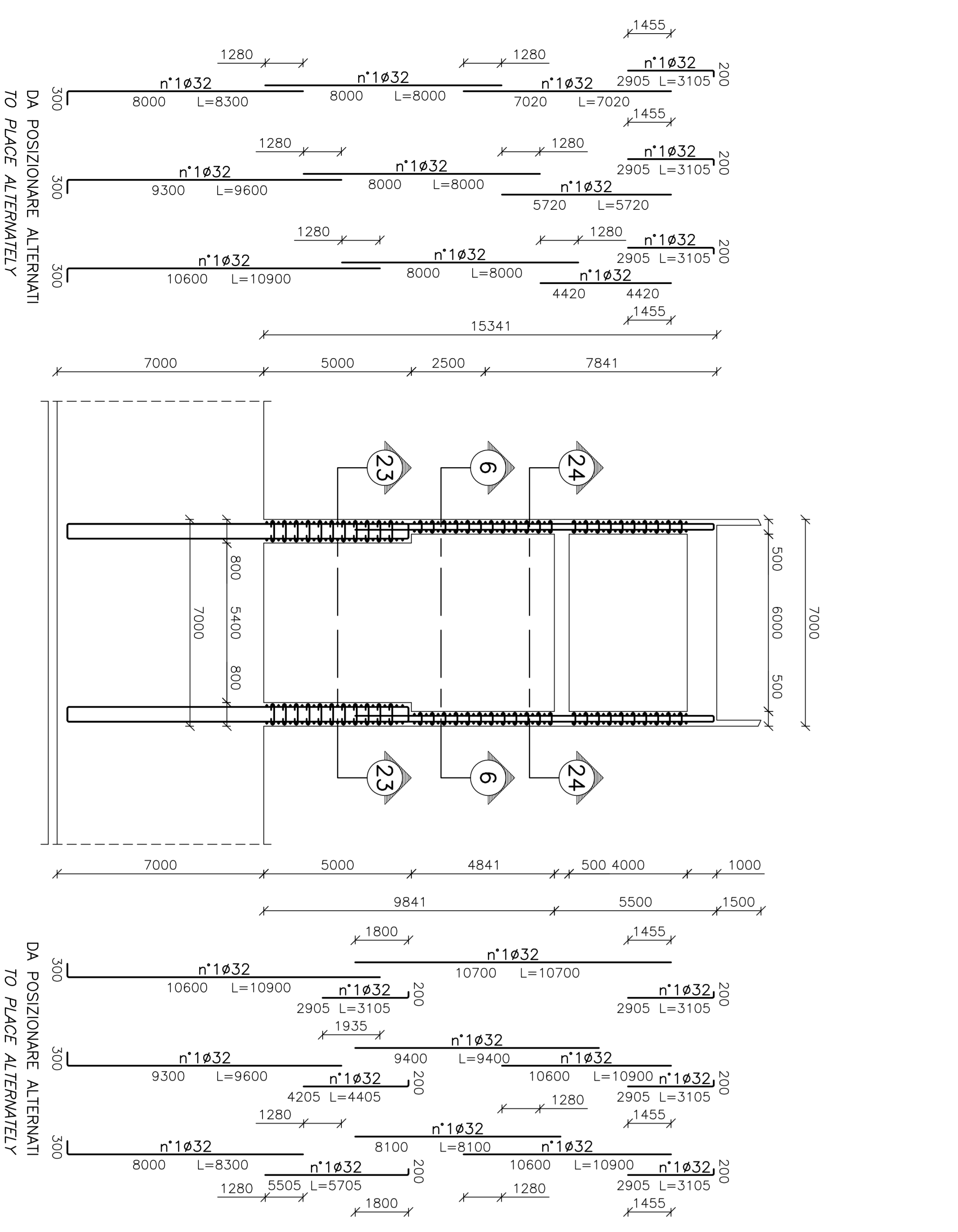
SEZIONE 6-6
 SCALE 1:50
SECTION 6-6
 SCALE 1:50



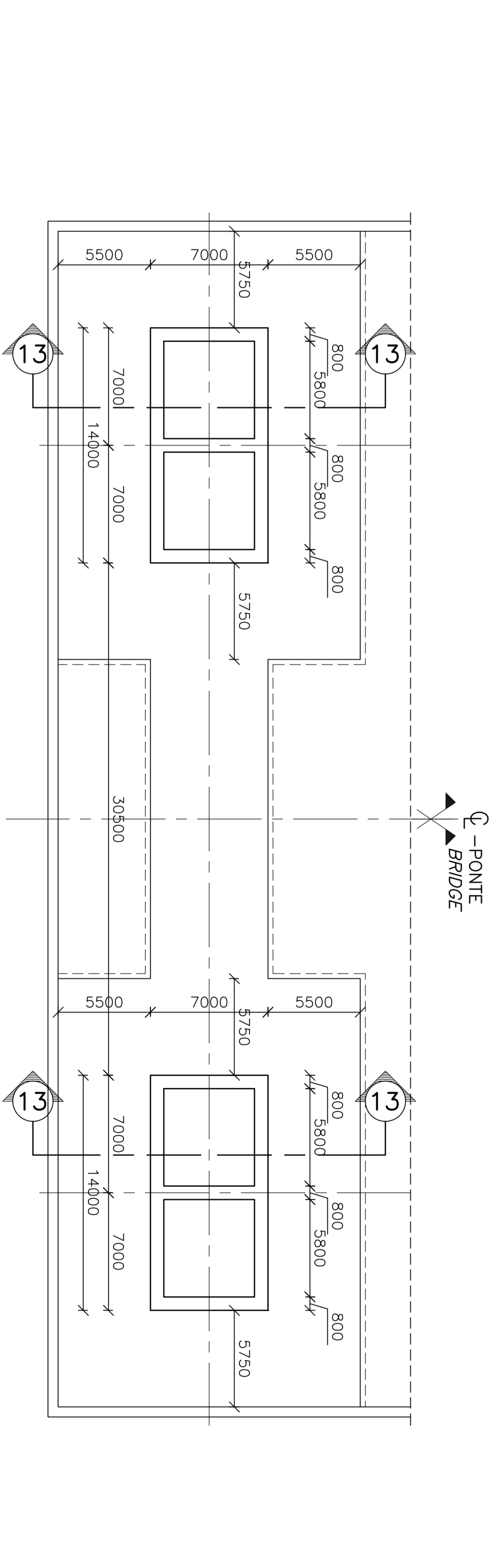
SEZIONE 23-23
 SCALE 1:50
SECTION 23-23
 SCALE 1:50



SEZIONE 13-13
 SCALE 1:100
SECTION 13-13
 SCALE 1:100



Pianta di riferimento (Pile lato terra)
 SCALE 1:200
REFERENCE PLAN (PIERS LAND SIDE)
 SCALE 1:200



NOTE GENERALI

NOTE: TUTTE LE DIMENSIONI SONO IN MILLIMETRI.
 DIMENSIONS: SAUN OUF DIMENSIONEMENT INDICATO.
 LE QUOTE ALTIMETRICHES SONO IN METRI (SLMM)

ELABORATI DI RIFERIMENTO:
 CG1000-PSXPST-0000000000-01 NOTE GENERALE

NOTES: DIMENSIONS ARE IN MILLIMETRES UNLESS OTHERWISE NOTED.
 DIMENSIONS: SAUN OUF DIMENSIONEMENT INDICATO.
 LEVELS ARE IN METRES (MSL)

REFERENCES:
 CG1000-PSXPST-0000000000-02 GENERAL NOTES

QUESTO ELABORATO GRAFICO VA LETTO INSIEME AL
 THIS DRAWING TO BE READ IN CONJUNCTION WITH:
 CG1002-PPDPS1-FAQC0000000-01
 CG1002-PMXDPS1-FAQC0000000-01
 CG1002-PMXDPS1-FAQC0000000-02
 CG1002-PMXDPS1-FAQC0000000-03
 CG1002-PMXDPS1-FAQC0000000-05
 CG1002-PMXDPS1-FAQC0000000-06

Stretto di Messina
 EUROINIK S.C.A.
 SOCIETA' ITALIANA PER CONDOTTE D'ACQUA S.p.A. (Messina)
 COOPERATIVA EDILITON E S.A.C.I. (Messina)
 ISHIMAWAMA, HANJIMA HEAVY INDUSTRIES CO. LTD. (Messina)
 A.C.I. S.C.S. - CONSORZIO STRETTO DI MESSINA (Messina)

PROGETTO DEFINITIVO

OPERA D'ATTRAVERSAMENTO
 SOTTOSTRUTTURE
 FONDAZIONI STRUTTURE TERMINALI
 STRUTTURAZIONE TERMINALE CALABRIA
 ANIMAZIONE FILE - SEZIONI E DETTAGLI 1A, 2/3

PRO156_F0

COMI
 EUROINIK S.C.A.
 SOCIETA' ITALIANA PER CONDOTTE D'ACQUA S.p.A. (Messina)
 COOPERATIVA EDILITON E S.A.C.I. (Messina)
 ISHIMAWAMA, HANJIMA HEAVY INDUSTRIES CO. LTD. (Messina)
 A.C.I. S.C.S. - CONSORZIO STRETTO DI MESSINA (Messina)

PRO156_F0

CG1002-PPDPS1-FAQC0000000-01
 CG1002-PMXDPS1-FAQC0000000-01
 CG1002-PMXDPS1-FAQC0000000-02
 CG1002-PMXDPS1-FAQC0000000-03
 CG1002-PMXDPS1-FAQC0000000-05
 CG1002-PMXDPS1-FAQC0000000-06