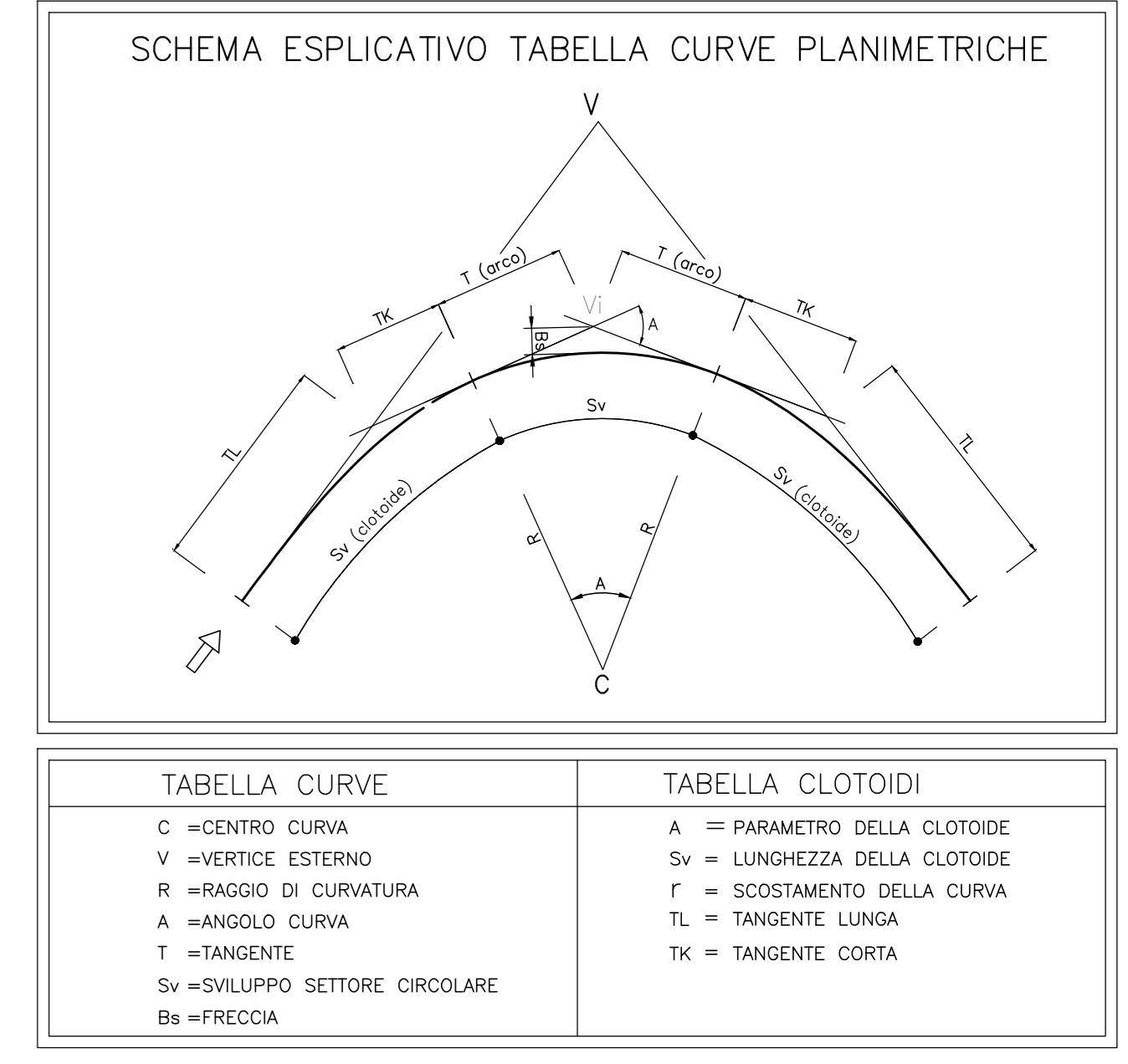
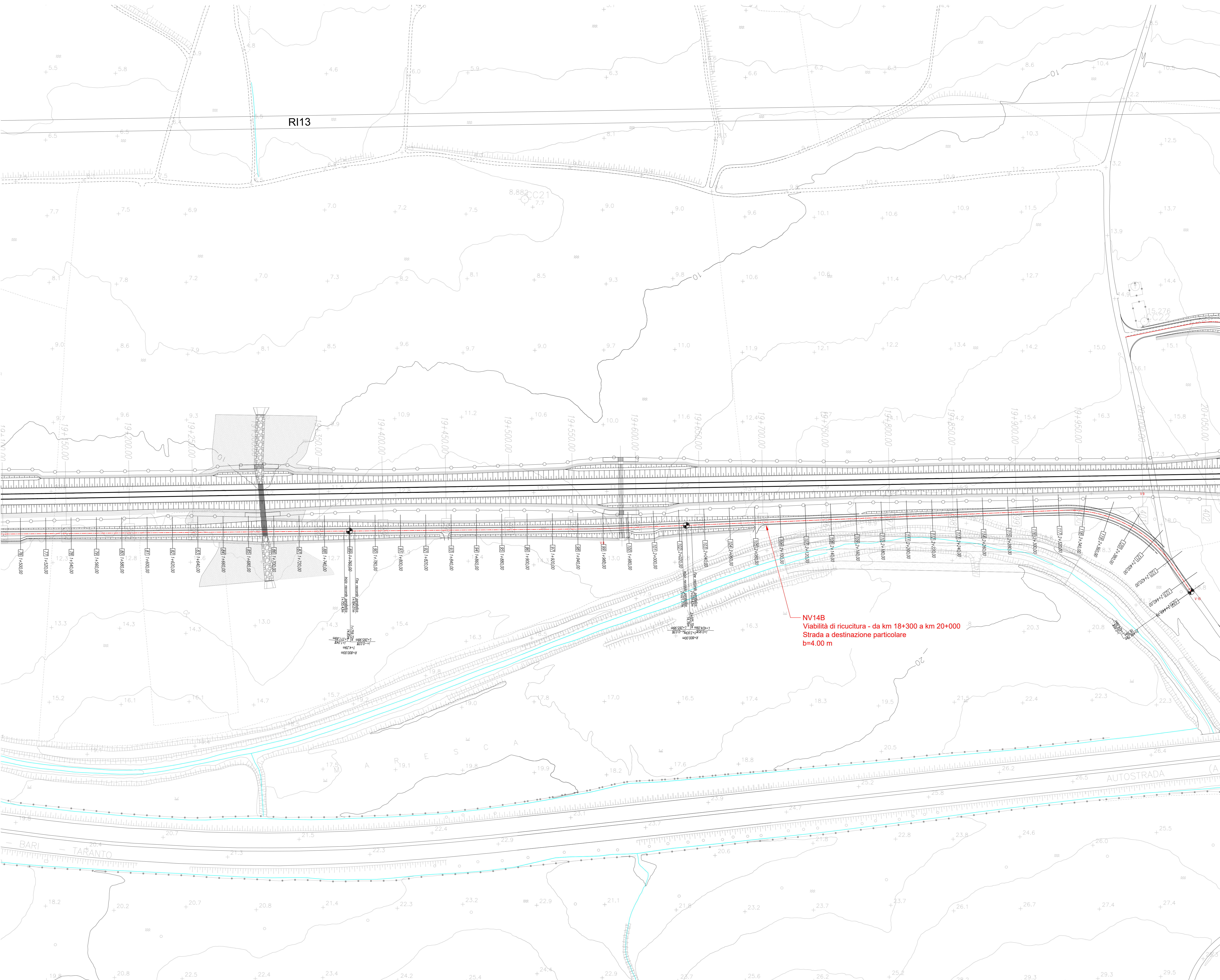


LEGENDA
 --- ASSE DI TRACCIAMENTO
 ■ DEMOLIZIONI



Stazione	Cl	Cv	Cs	Cv	Cs	Cv	Cs	Cv	Cs	Cv	Cs
19+000.00	19+000.00	19+000.00	19+000.00	19+000.00	19+000.00	19+000.00	19+000.00	19+000.00	19+000.00	19+000.00	19+000.00
19+050.00	19+050.00	19+050.00	19+050.00	19+050.00	19+050.00	19+050.00	19+050.00	19+050.00	19+050.00	19+050.00	19+050.00
19+100.00	19+100.00	19+100.00	19+100.00	19+100.00	19+100.00	19+100.00	19+100.00	19+100.00	19+100.00	19+100.00	19+100.00
19+150.00	19+150.00	19+150.00	19+150.00	19+150.00	19+150.00	19+150.00	19+150.00	19+150.00	19+150.00	19+150.00	19+150.00
19+200.00	19+200.00	19+200.00	19+200.00	19+200.00	19+200.00	19+200.00	19+200.00	19+200.00	19+200.00	19+200.00	19+200.00
19+250.00	19+250.00	19+250.00	19+250.00	19+250.00	19+250.00	19+250.00	19+250.00	19+250.00	19+250.00	19+250.00	19+250.00
19+300.00	19+300.00	19+300.00	19+300.00	19+300.00	19+300.00	19+300.00	19+300.00	19+300.00	19+300.00	19+300.00	19+300.00
19+350.00	19+350.00	19+350.00	19+350.00	19+350.00	19+350.00	19+350.00	19+350.00	19+350.00	19+350.00	19+350.00	19+350.00
19+400.00	19+400.00	19+400.00	19+400.00	19+400.00	19+400.00	19+400.00	19+400.00	19+400.00	19+400.00	19+400.00	19+400.00
19+450.00	19+450.00	19+450.00	19+450.00	19+450.00	19+450.00	19+450.00	19+450.00	19+450.00	19+450.00	19+450.00	19+450.00
19+500.00	19+500.00	19+500.00	19+500.00	19+500.00	19+500.00	19+500.00	19+500.00	19+500.00	19+500.00	19+500.00	19+500.00
19+550.00	19+550.00	19+550.00	19+550.00	19+550.00	19+550.00	19+550.00	19+550.00	19+550.00	19+550.00	19+550.00	19+550.00
19+600.00	19+600.00	19+600.00	19+600.00	19+600.00	19+600.00	19+600.00	19+600.00	19+600.00	19+600.00	19+600.00	19+600.00
19+650.00	19+650.00	19+650.00	19+650.00	19+650.00	19+650.00	19+650.00	19+650.00	19+650.00	19+650.00	19+650.00	19+650.00
19+700.00	19+700.00	19+700.00	19+700.00	19+700.00	19+700.00	19+700.00	19+700.00	19+700.00	19+700.00	19+700.00	19+700.00
19+750.00	19+750.00	19+750.00	19+750.00	19+750.00	19+750.00	19+750.00	19+750.00	19+750.00	19+750.00	19+750.00	19+750.00
19+800.00	19+800.00	19+800.00	19+800.00	19+800.00	19+800.00	19+800.00	19+800.00	19+800.00	19+800.00	19+800.00	19+800.00
19+850.00	19+850.00	19+850.00	19+850.00	19+850.00	19+850.00	19+850.00	19+850.00	19+850.00	19+850.00	19+850.00	19+850.00
19+900.00	19+900.00	19+900.00	19+900.00	19+900.00	19+900.00	19+900.00	19+900.00	19+900.00	19+900.00	19+900.00	19+900.00
19+950.00	19+950.00	19+950.00	19+950.00	19+950.00	19+950.00	19+950.00	19+950.00	19+950.00	19+950.00	19+950.00	19+950.00
20+000.00	20+000.00	20+000.00	20+000.00	20+000.00	20+000.00	20+000.00	20+000.00	20+000.00	20+000.00	20+000.00	20+000.00

COMMITTENTE: **RFI** RETE FERROVIARIA ITALIANA GRUPPO FERROVIE DELLO STATO ITALIANE

PROGETTAZIONE: **ITALFER** INFRASTRUTTURE FERROVIARIE

INFRASTRUTTURE FERROVIARIE STRATEGICHE DEFINITE DALLA LEGGE OBIETTIVO N.443/01

U.O. INFRASTRUTTURE SUD

PROGETTO DEFINITIVO

LINEA PESCARA - BARI
RADDOPPIO DELLA TRATTA FERROVIARIA TERMOLI - LESINA
LOTTI 2 e 3 - RADDOPPIO TERMOLI - RIPALTA
VIABILITA' - NV

NV14 - Viabilità minore di ricicatura - da km 18+300 a km 20+000
 Planimetria di progetto con dati di tracciamento piano - altimetrico Tratto B - Tav. 3 di 3

SCALA: **1:1000**

COMMESSA	LOTTO	FASE	ENTE	TIPO DOC.	OPERA/DISCIPLINA	PROGR.	REV.
L102	02	D	78	P7	NV1400	007	C

Rev.	Descrizione	Redatto	Verificato	Data	Approvato	Data	Autorizzato Data
A	Emesso Esecutivo	E. Altobelli	C. Mastro	02/09/2018	S. M. Bianchi	02/09/2018	02/09/2018
B	Emesso Esecutivo	E. Altobelli	C. Mastro	02/09/2018	S. M. Bianchi	02/09/2018	02/09/2018
C	Emesso Esecutivo	E. Altobelli	C. Mastro	02/09/2018	S. M. Bianchi	02/09/2018	02/09/2018

File: L10202D78P7NV1400007C.DWG n. Etab.: _____