

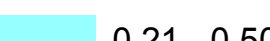
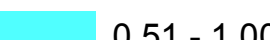
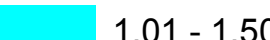

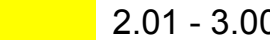
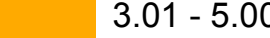
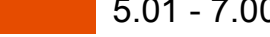
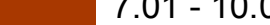
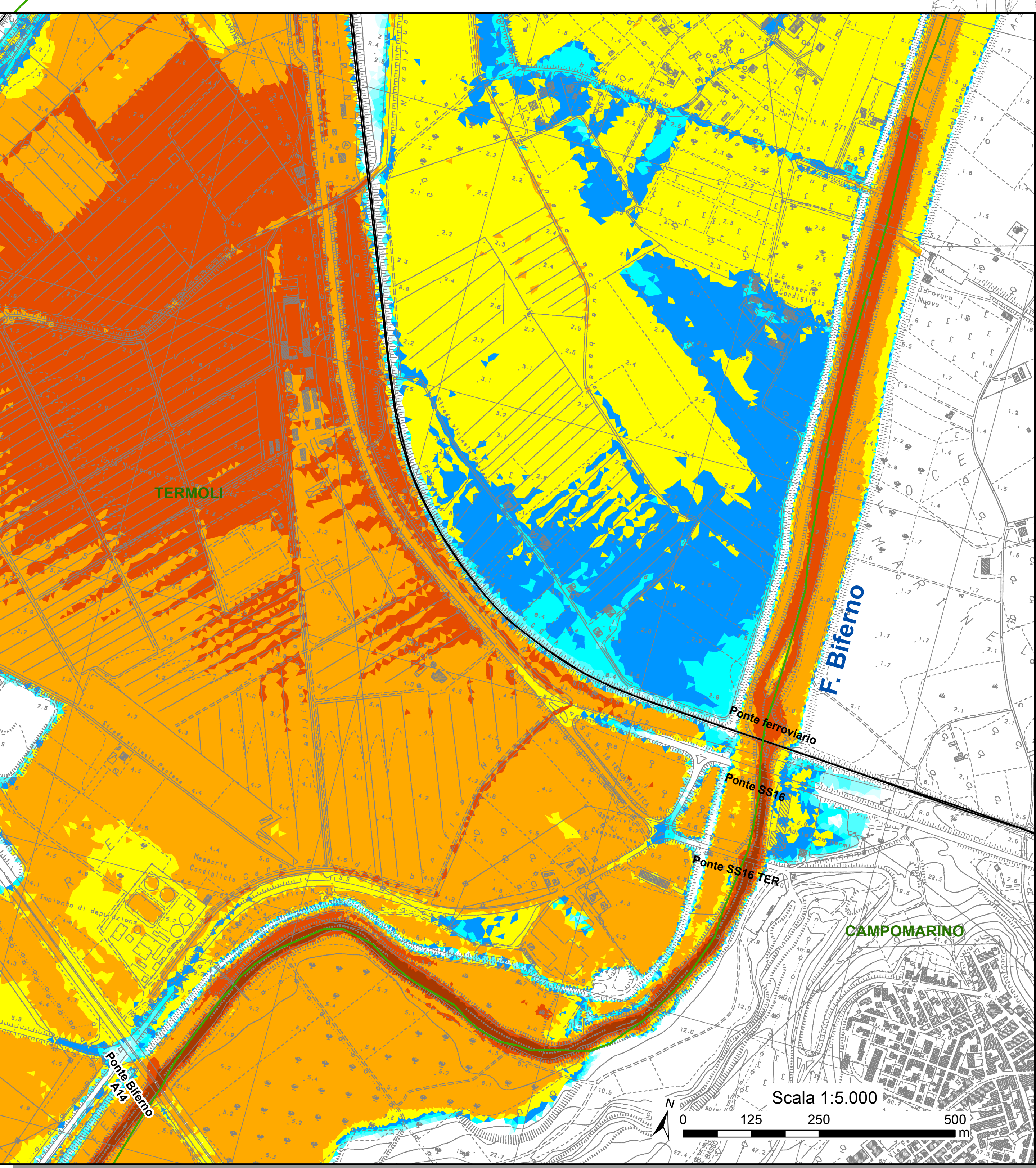
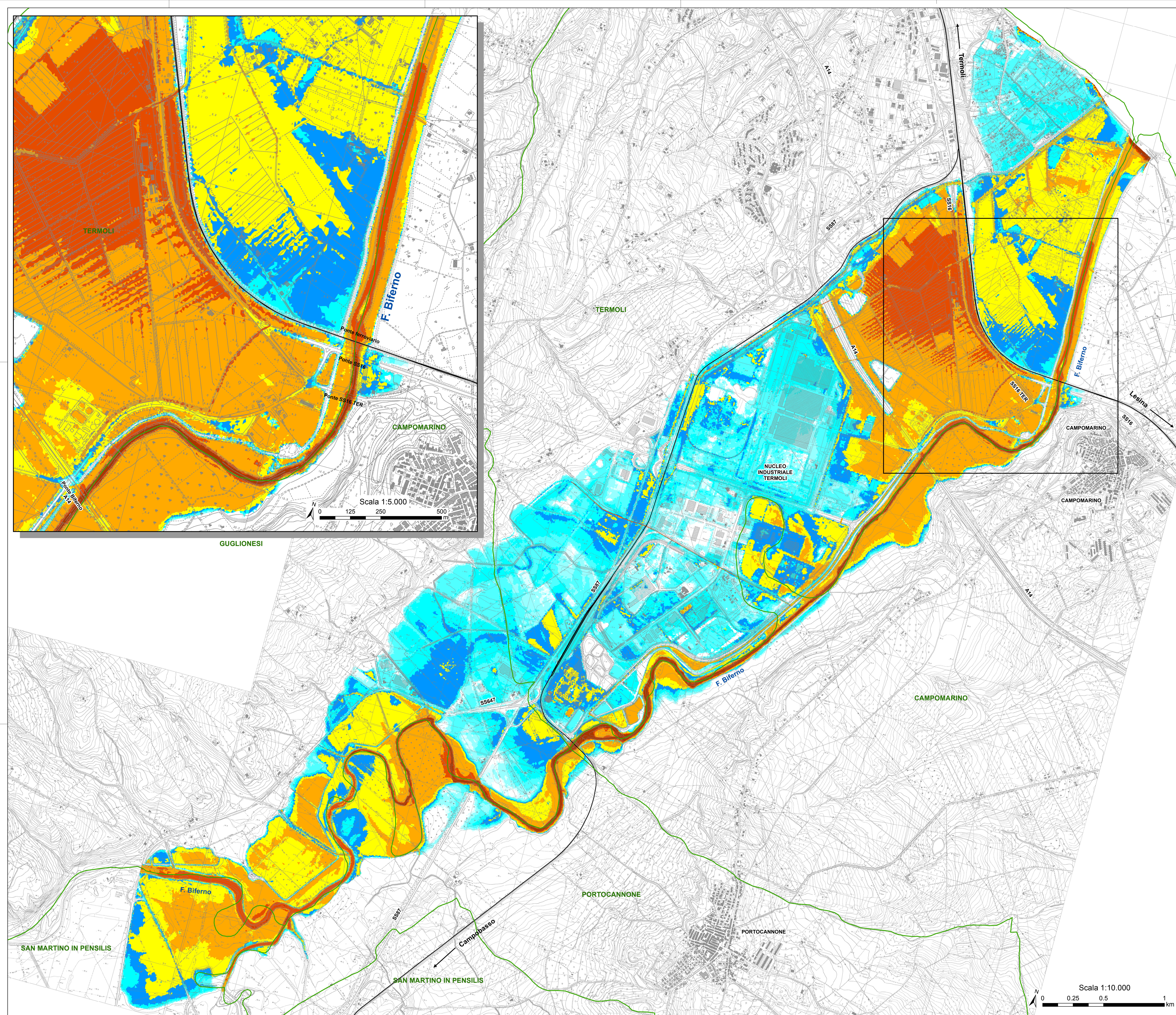
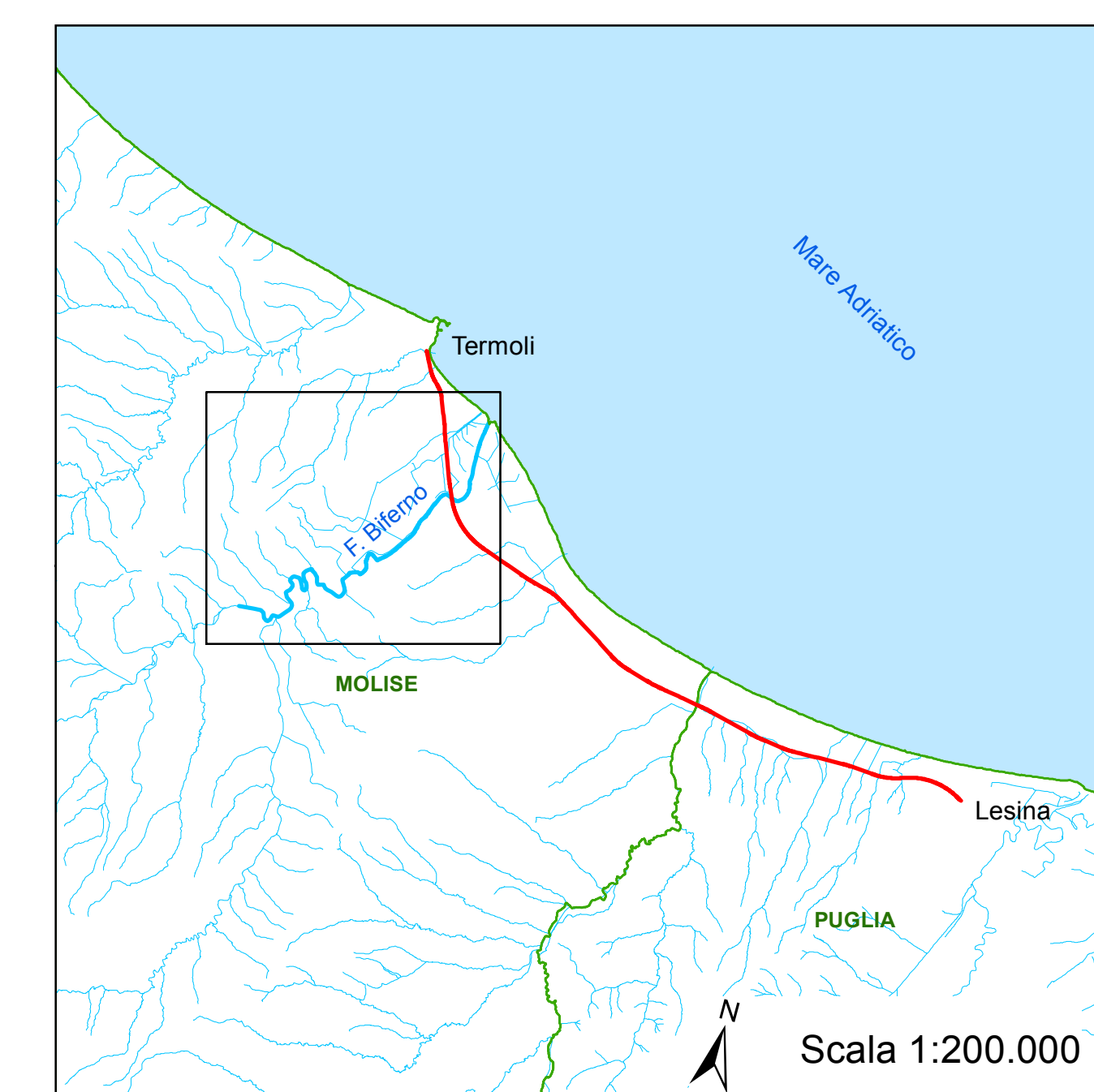


Legenda

-  Limiti comunali
-  Linea ferroviaria esistente

Classi di tirante TR300 anni [m]

-  0.00 - 0.20
-  0.21 - 0.50
-  0.51 - 1.00
-  1.01 - 1.50
-  1.51 - 2.00
-  2.01 - 3.00
-  3.01 - 5.00
-  5.01 - 7.00
-  7.01 - 10.00



COMMITTENTE: 

PROGETTAZIONE: 

INFRASTRUTTURE FERROVIARIE STRATEGICHE DEFINITE DALLA LEGGE OBIETTIVO N.443/01

U.O. INFRASTRUTTURE SUD

PROGETTO DEFINITIVO

LINEA PESCARA - BARI
RADDOPPIO DELLA TRATTA FERROVIARIA TERMOLI - LESINA
LOTTI 2 e 3 - RADDOPPIO TERMOLI - RIPALTA

IDROLOGIA E IDRAULICA
 Fiume Biferno
 Aree di esondazione con indicazione dei tiranti idrici per Tr 300 anni - ante operam 1

SCALA: **varie**

COMMESSA	LOTTO	FASE	ENTE	TIPO DOC.	OPERA/DISCIPLINA	PROGR.	REV.
L1	02	D	78	P2	100002	002	A

Rev.	Descrizione	Redatto	Data	Verificato	Data	Approvato	Data	Autorizzato Data
A	Progetto Definitivo	M. Cecchi	03/01/18	[Signature]	03/01/18	[Signature]	03/01/18	[Signature]

File: L10202078P21C0002002A.dwg