
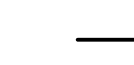











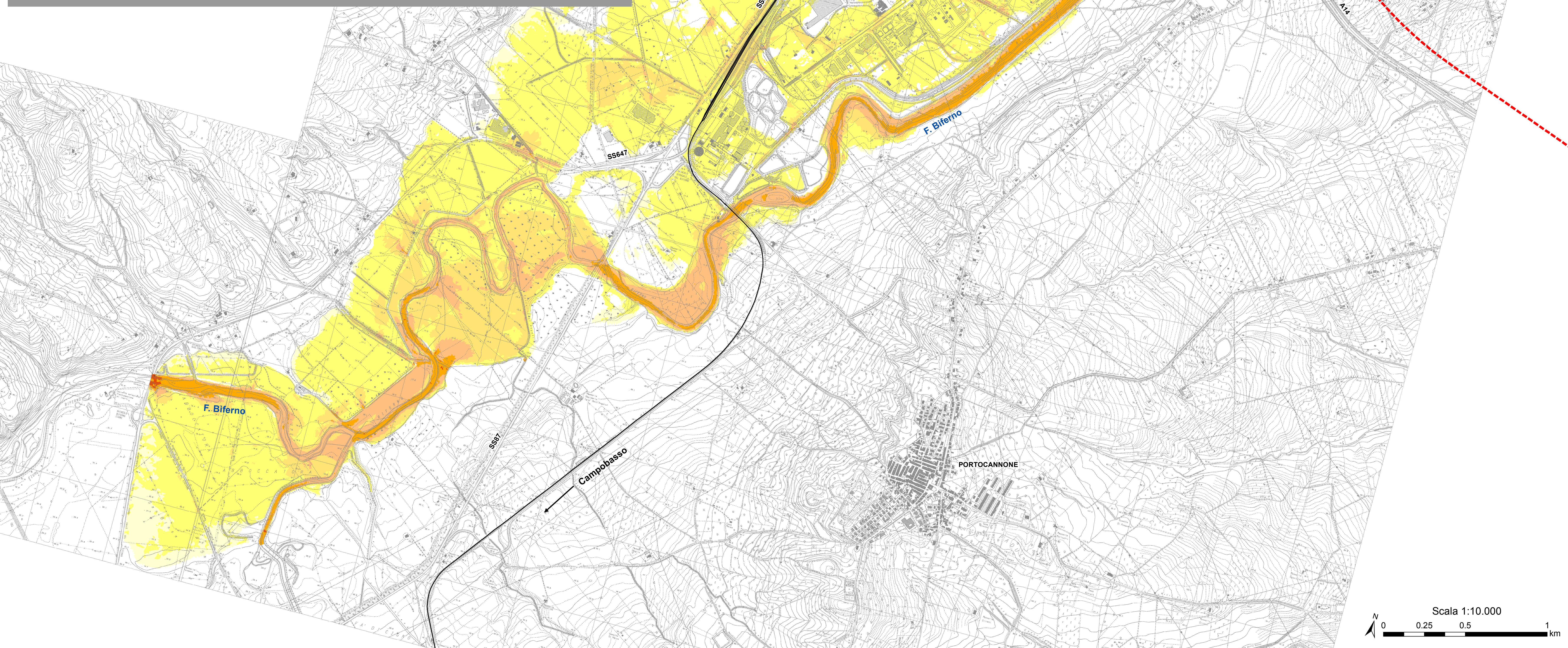
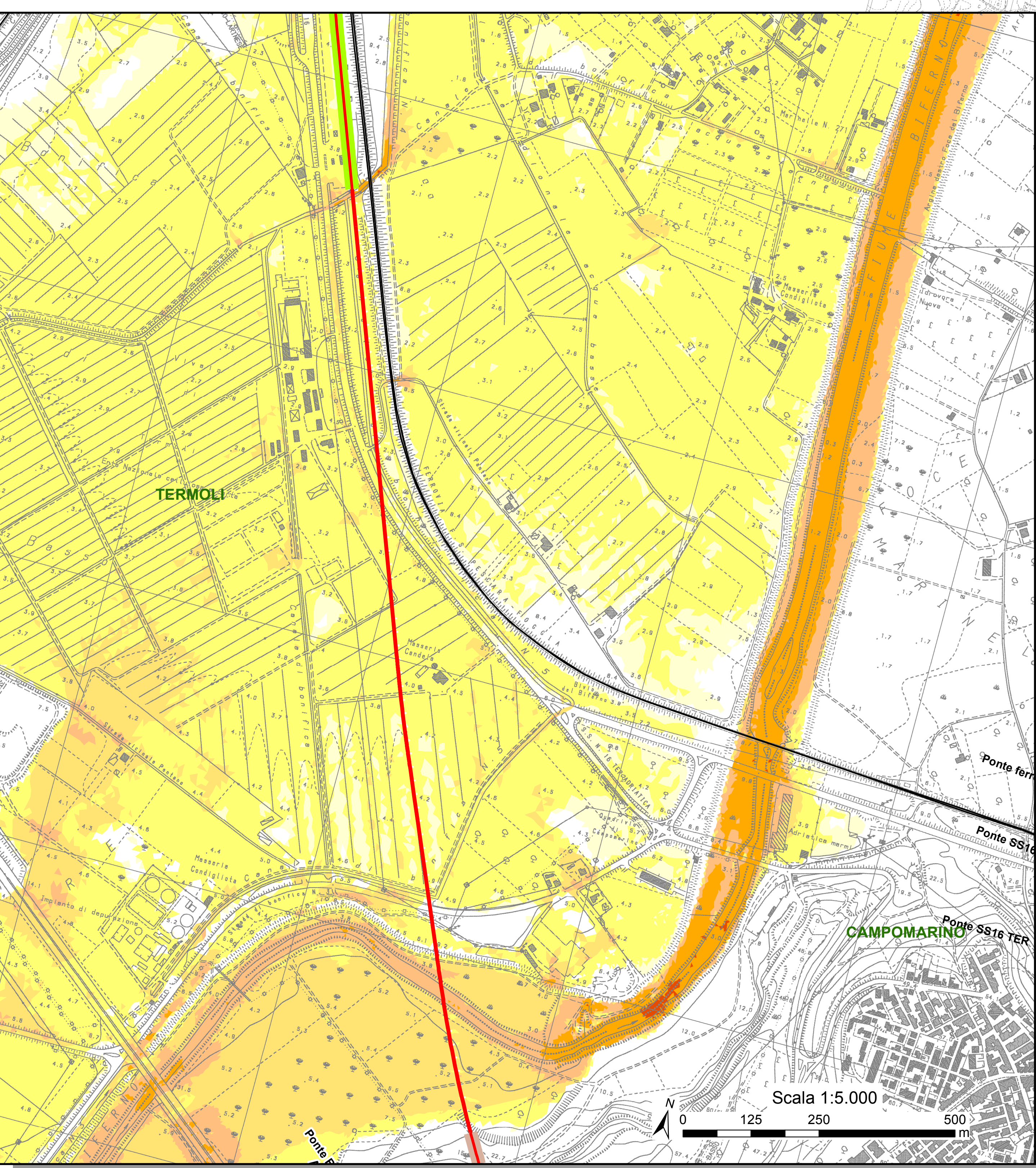
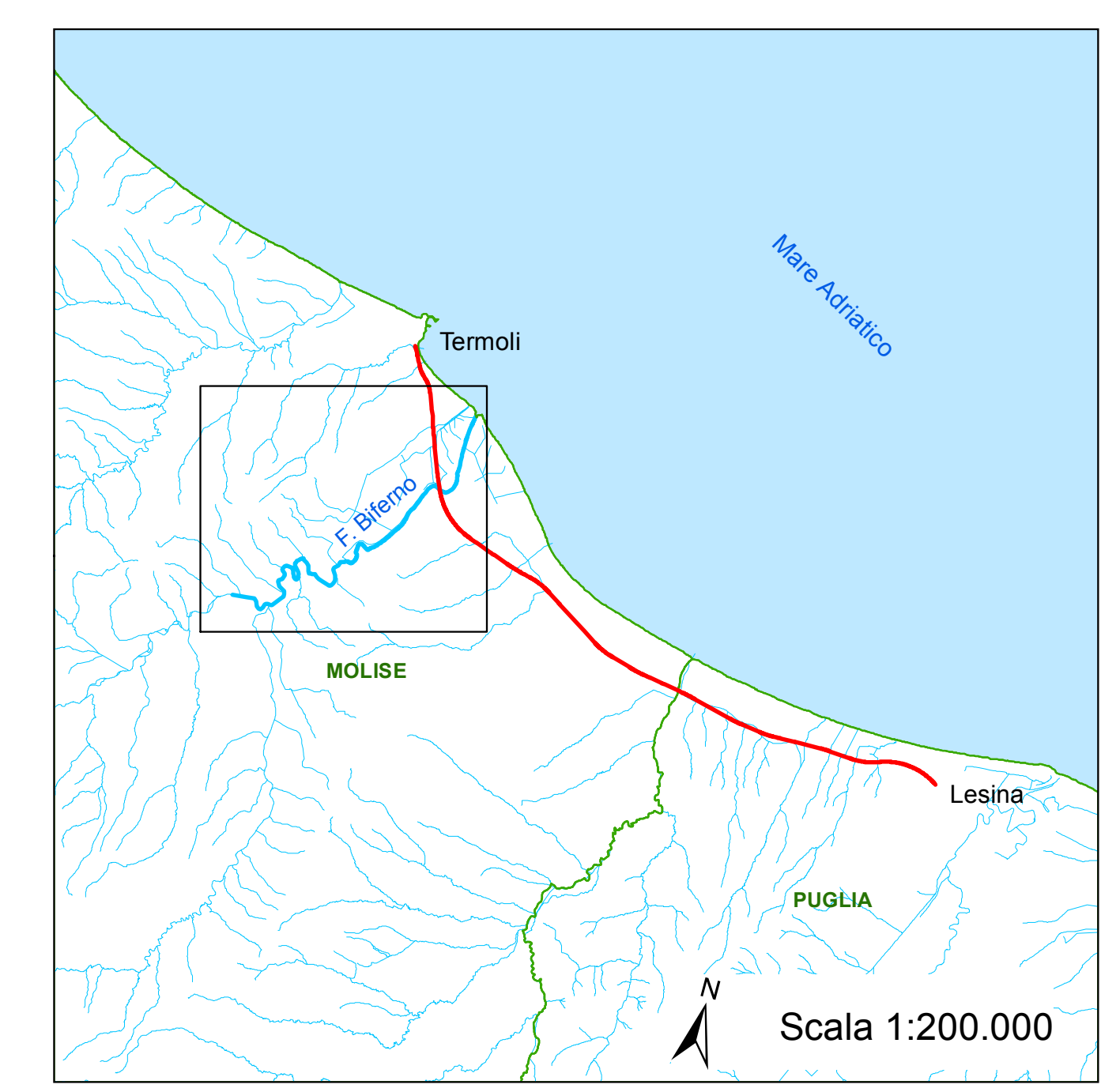



Legenda

-  Limiti comunali
-  Linea ferroviaria esistente
- Opera in progetto**
-  Tratto in galleria
-  Tratto in rilevato
-  Tratto in trincea
-  Tratto in viadotto
- Aree di esondazione:**
velocità [m/s] (Tr 30 anni)
-  0.00 - 0.05
-  0.06 - 0.50
-  0.51 - 1.00
-  1.01 - 2.00
-  2.01 - 4.00
-  4.01 - 7.00
-  7.01 - 10.00



COMMITTENTE



PROGETTAZIONE

INFRASTRUTTURE FERROVIARIE STRATEGICHE DEFINITE DALLA LEGGE OBIETTIVO N.443/01

U.O. INFRASTRUTTURE SUD

PROGETTO DEFINITIVO

LINEA PESCARA - BARI
RADDOPPIO DELLA TRATTA FERROVIARIA TERMOLI - LESINA
LOTTI 2 e 3 - RADDOPPIO TERMOLI - RIPALTA
IDROLOGIA E IDRAULICA

Flume Biferno
 Aree di esondazione con indicazione delle velocità per Tr 30 anni post operam 1

SCALA
 VARIE

COMMESSA	LOTTO	FASE	ENTE	TIPO DOC.	OPERA/DISCIPLINA	PROGR.	REV.
L102	02	D	78	PZ	I00002	063	A

Rev.	Descrizione	Redatto	Data	Verificato	Data	Approvato	Data	Autorizzato Data
A	Emissione Definitiva	M. Crosti	Mar 2019	C. Ruffini	Mar 2019	[Signature]	Mar 2019	G. Tassi Mar 2019

File: L10202D78PZID0002063A.MXD