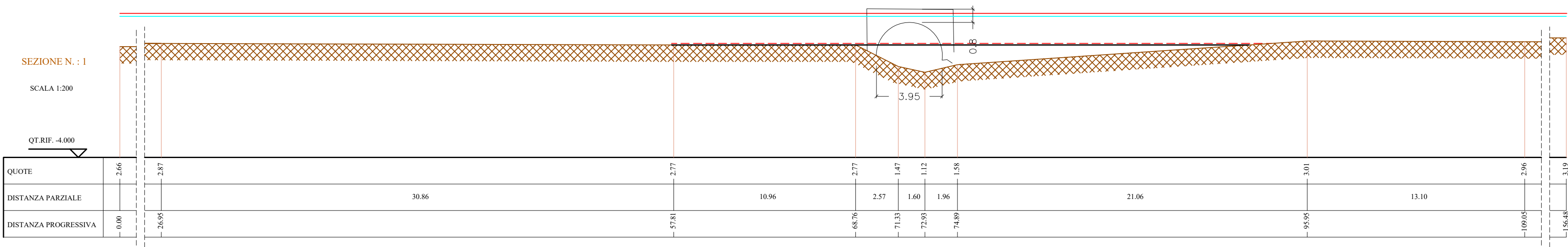
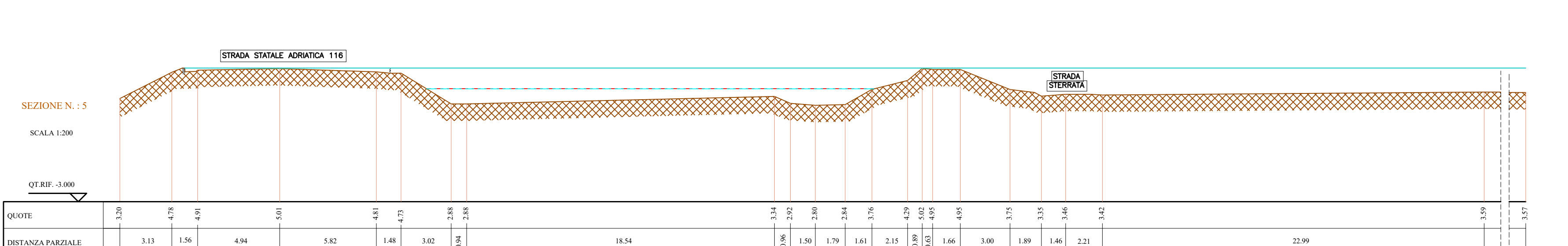
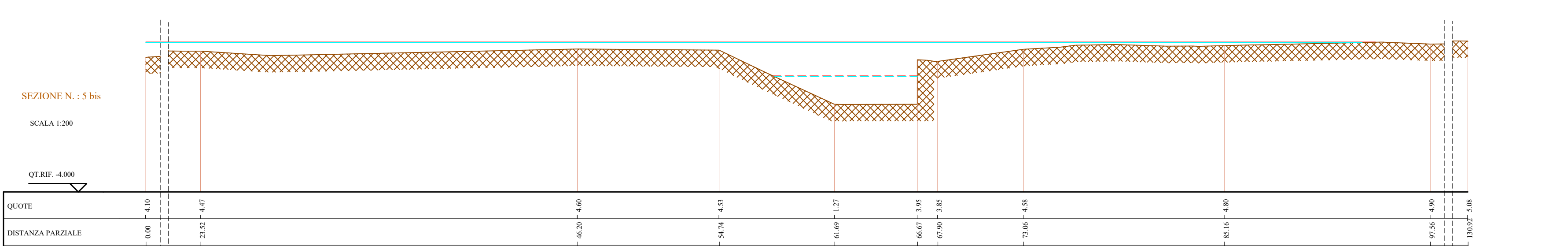
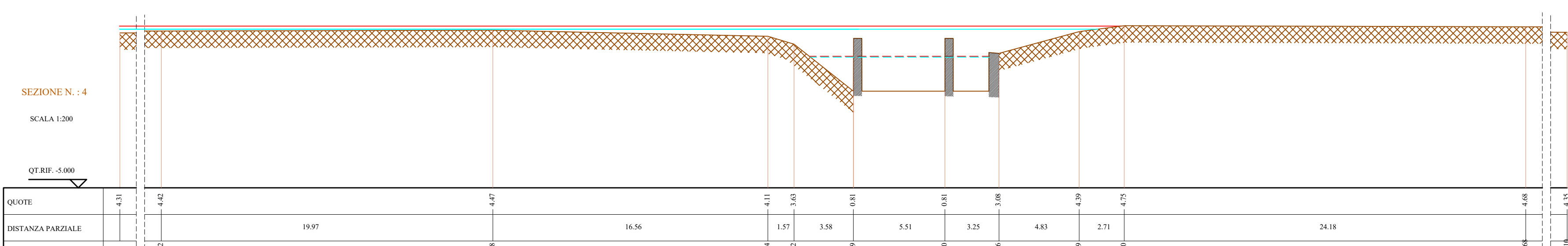
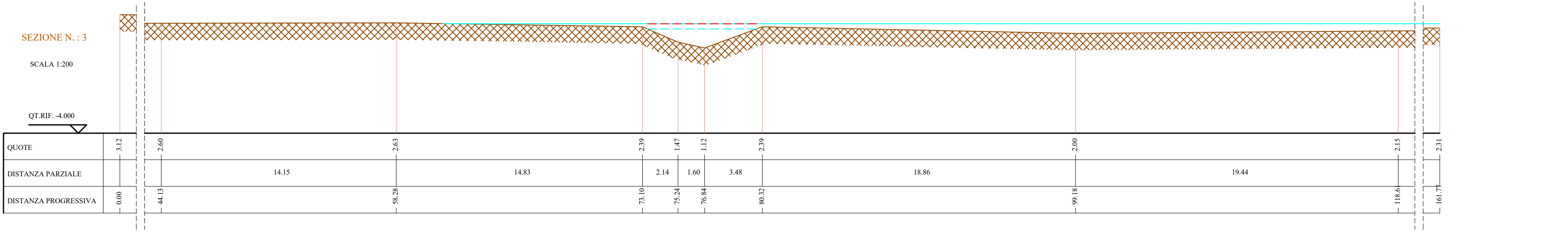
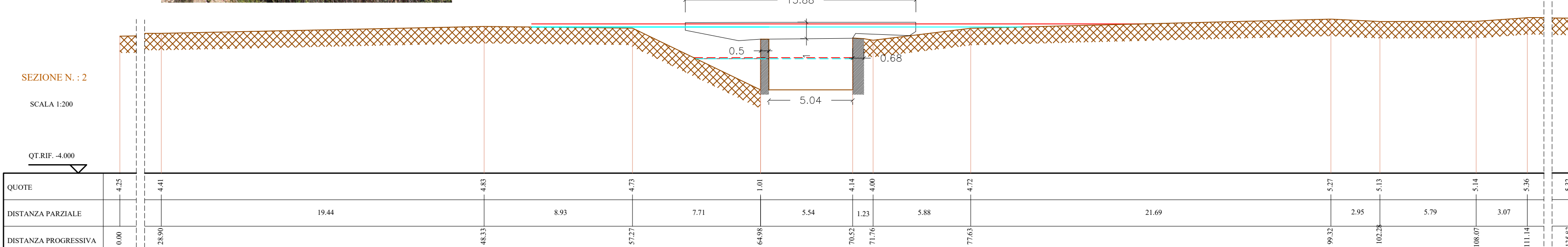


SEZIONI ANTE OPERAM

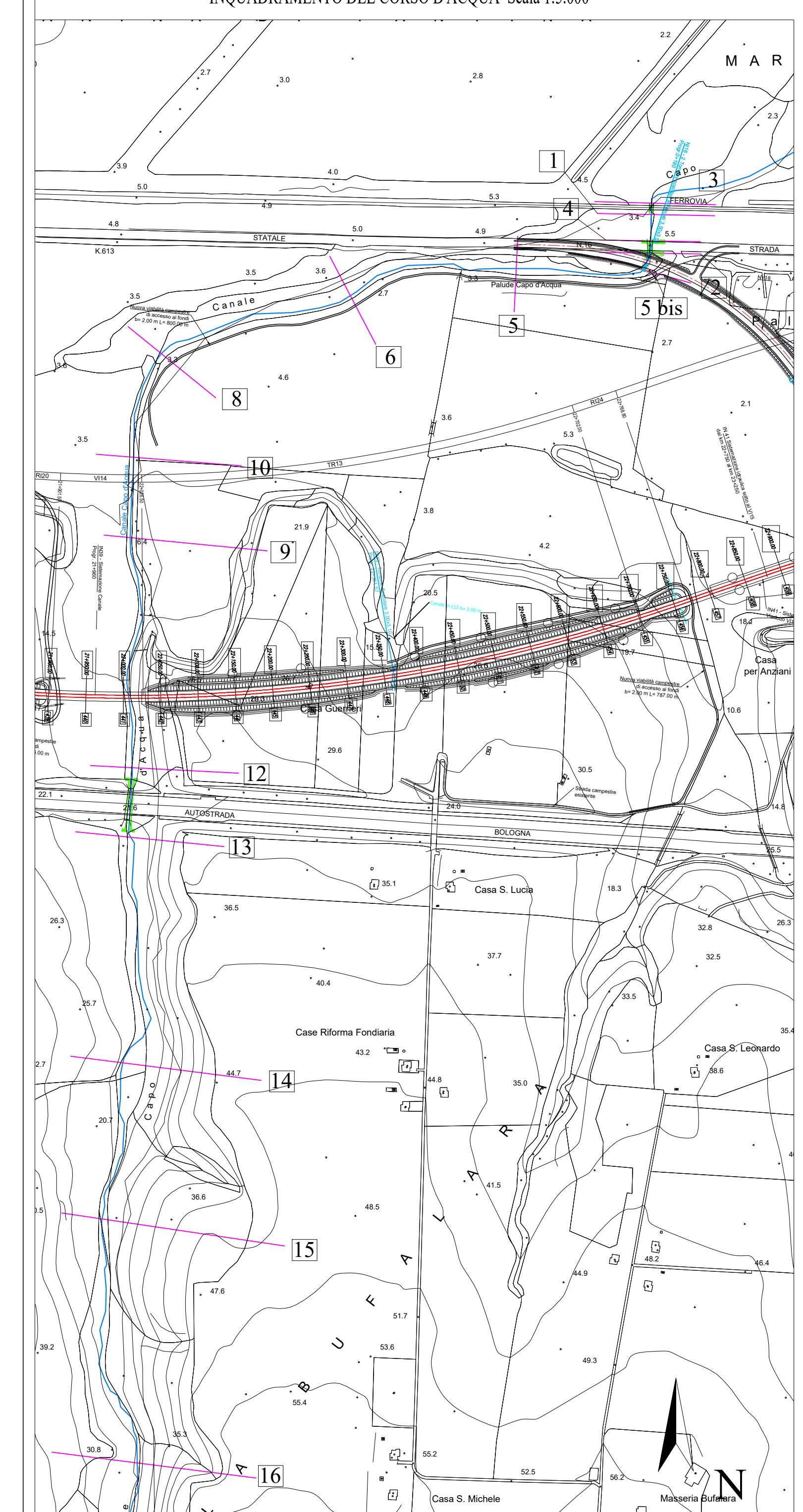
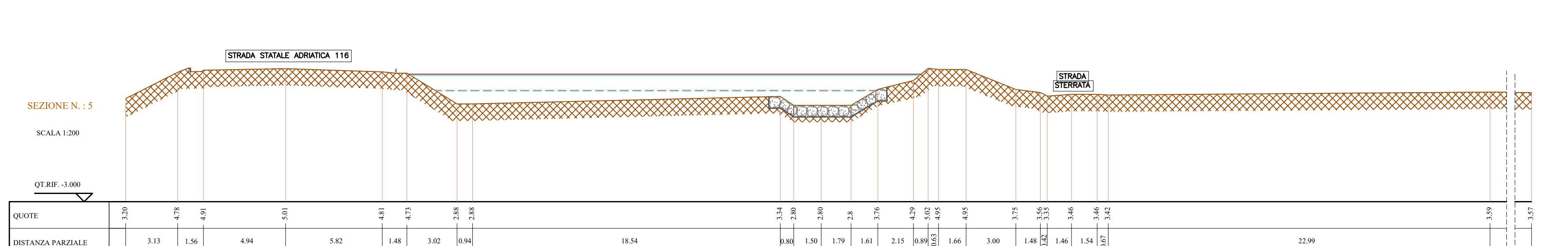
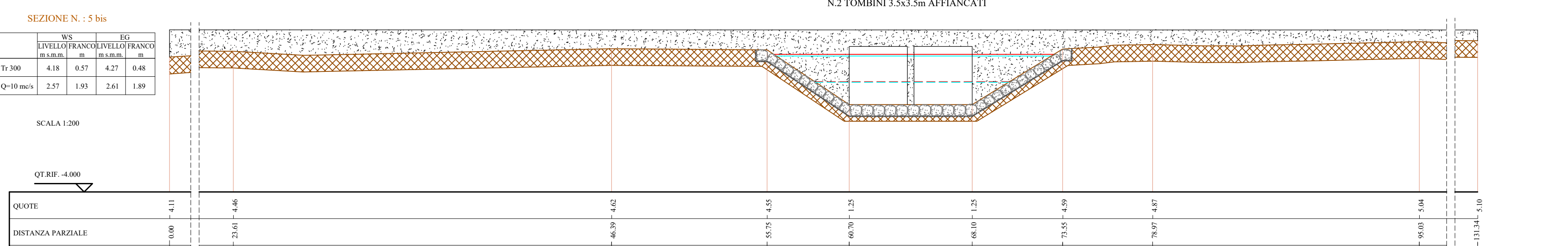
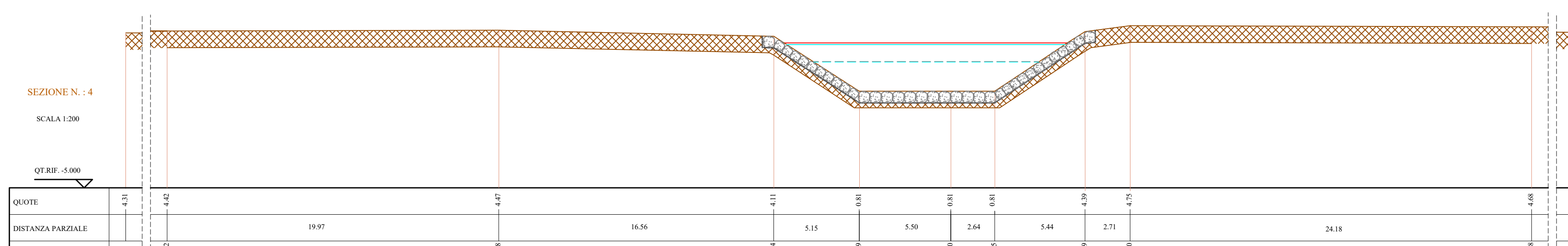
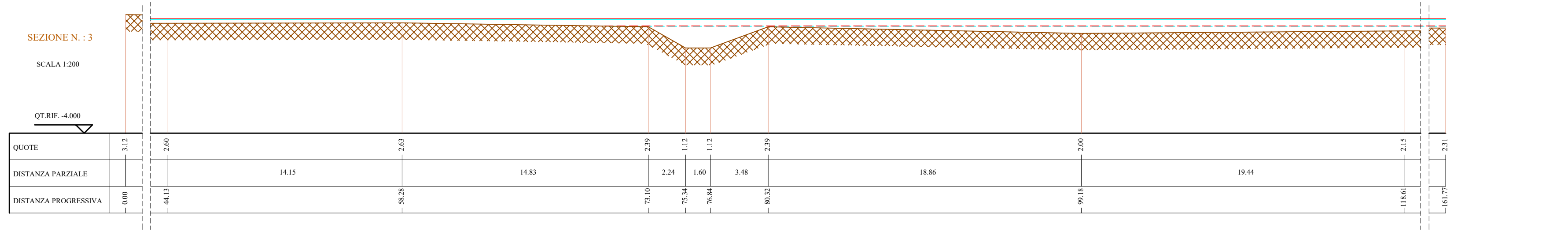
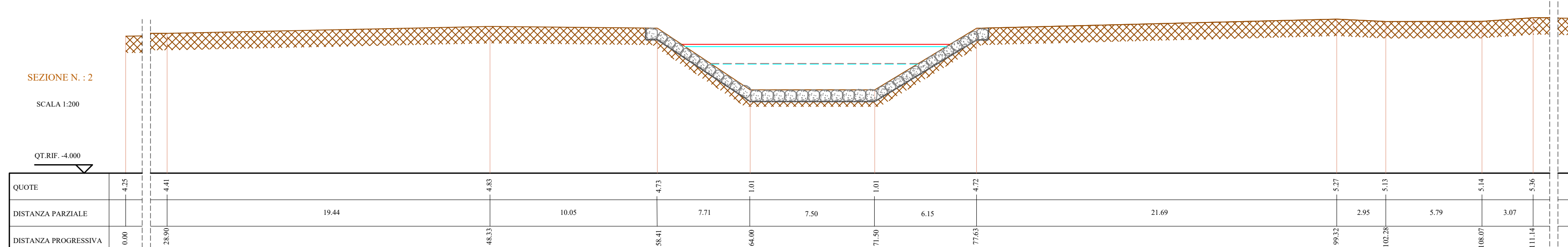
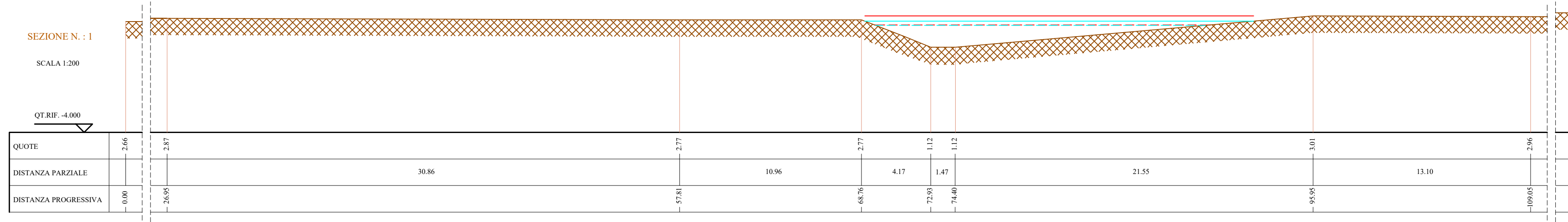
TOMBINO FERROVIARIO DA DEMOLIRE



TOMBINO STRADALE DA DEMOLIRE



SEZIONI POST OPERAM



LEGENDA SEZIONI

- LIVELLO IDRICO TR 300 (WS)
- LIVELLO ENERGI TR 300 (EG)
- PROFLO DEL TERRENO
- LIVELLO IDRICO Q = 10 mc/s (WS)
- LIVELLO ENERGI Q = 10 mc/s (EG)

NB. LE QUOTE SONO ESPRESSE IN m s.l.m.m.

LE SEZIONI SONO STATE RICOSTRUITE MEDIANTE RILIEVO CELERIMETRICO IN CAMPO

COMMITTENTE: **RFI** RETE FERROVIARIA ITALIANA GRUPPO FERROVIE DELLO STATO ITALIANE

PROGETTAZIONE: **ITALFERR** GRUPPO FERROVIE DELLO STATO ITALIANE

INFRASTRUTTURE FERROVIARIE STRATEGICHE DEFINITE DALLA LEGGE OBIETTIVO N.443/01

U.O. INFRASTRUTTURE SUD

PROGETTO DEFINITIVO

LINEA PESCARA - BARI
RADDOPPIO DELLA TRATTA FERROVIARIA TERMOLI - LESINA
LOTTI 2 e 3 - RADDOPPIO TERMOLI - RIPALTA
IDROLOGIA E IDRAULICA

Sezioni ante e post operam "Capo d'Acqua" pk 22+025 1/3

SC