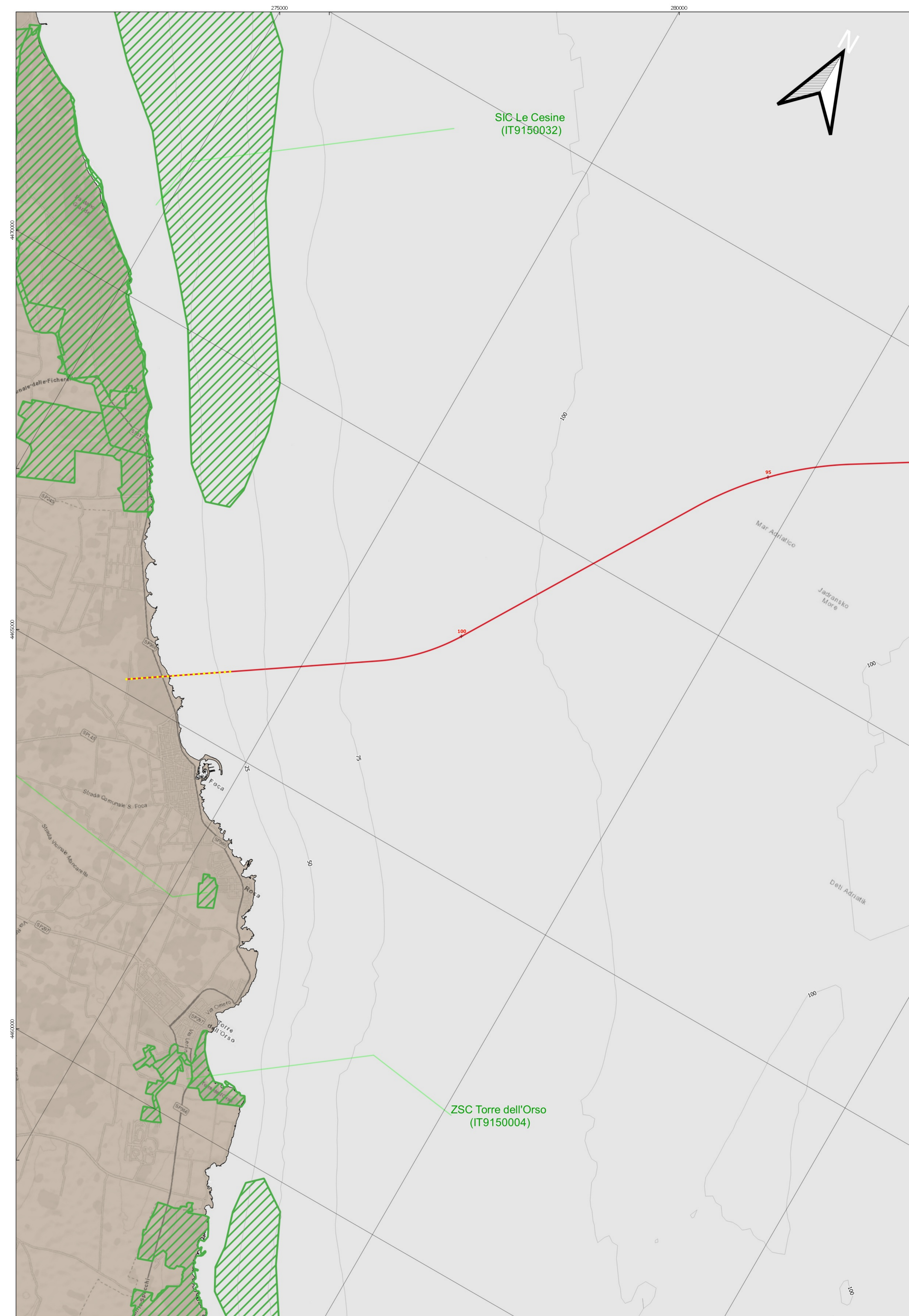
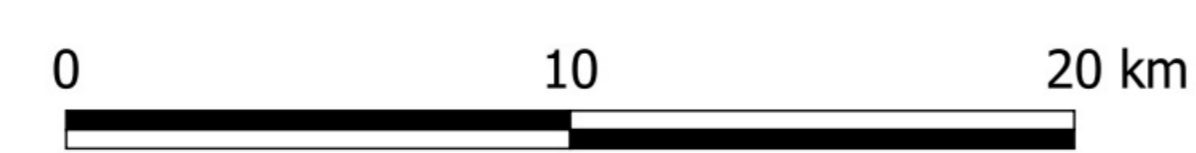


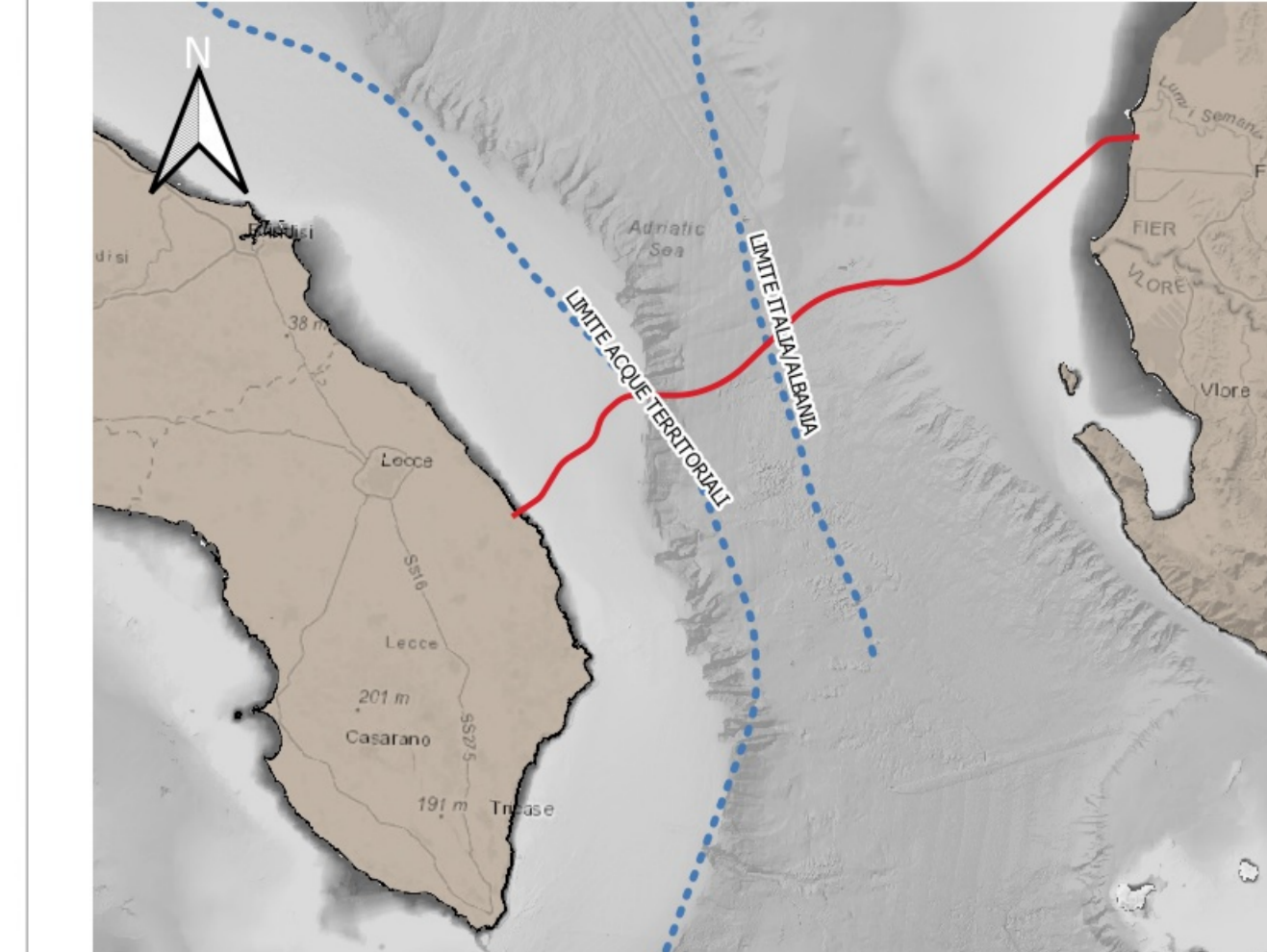
Rete Natura 2000 da Brindisi a Capo S. Maria di Leuca (scala 1:150,000)



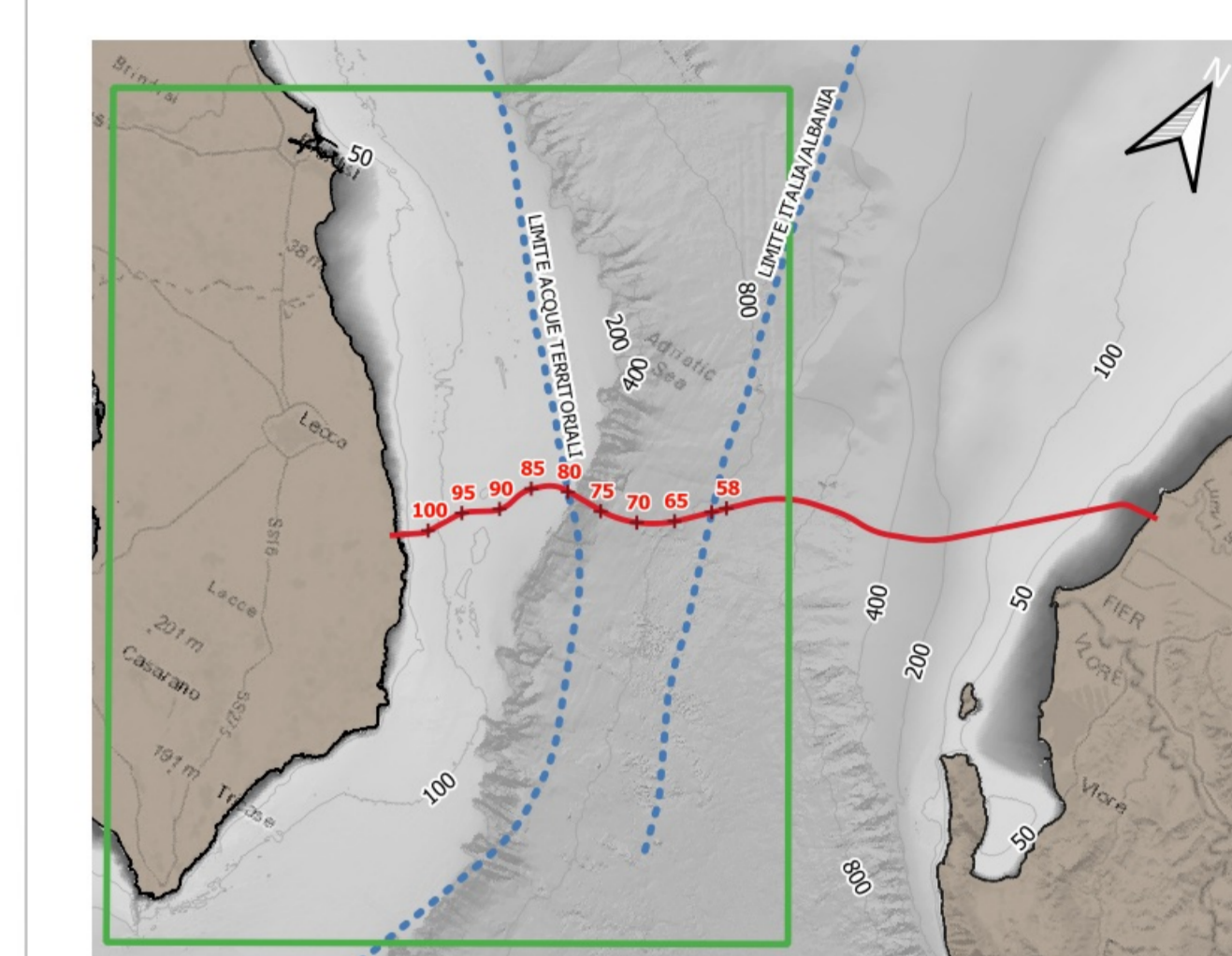
Rete Natura 2000 zona di San Foca (scala 1:25,000)



KEY MAP



KEY PLAN



LEGENDA



Progetto

- Pipeline/FOC
- - - - Microtunnel
- Rete Natura 2000

NOTE:

Confini dei Siti Natura 2000 relativi alla Trasmissione CE Dicembre 2017 ([ftp://ftp.mambiente.it/PNM/Natura2000/TrasmissioneCE\\_dicembre2017/](http://ftp.mambiente.it/PNM/Natura2000/TrasmissioneCE_dicembre2017/))

Coordinate System Reference: WGS84 (ETRF 1989) Datum, WGS84 Spheroid  
Grid coordinates are in metres on the Universal Transverse Mercator Projection, Zone 34 N, Central Meridian 21°E.

		
SUPPLIER DOCUMENT NUMBER 16-1352-M07-H14	REVISION NO. 0	
PROJECT TITLE <b>TAP Trans Adriatic Pipeline Project</b> ALLEGATO 1 RETE NATURA 2000 E PROGETTO TAP		
DRAWING TITLE ALLEGATO 1 RETE NATURA 2000 E PROGETTO TAP		DRAWING <b>1</b>
FORMAT A0+	SCALE 1:150000 1:25000	REVISION NO. 0
DRAWINGS NO. <b>OPL00 - C493 - 150 - Y - TRX - 0015</b>		