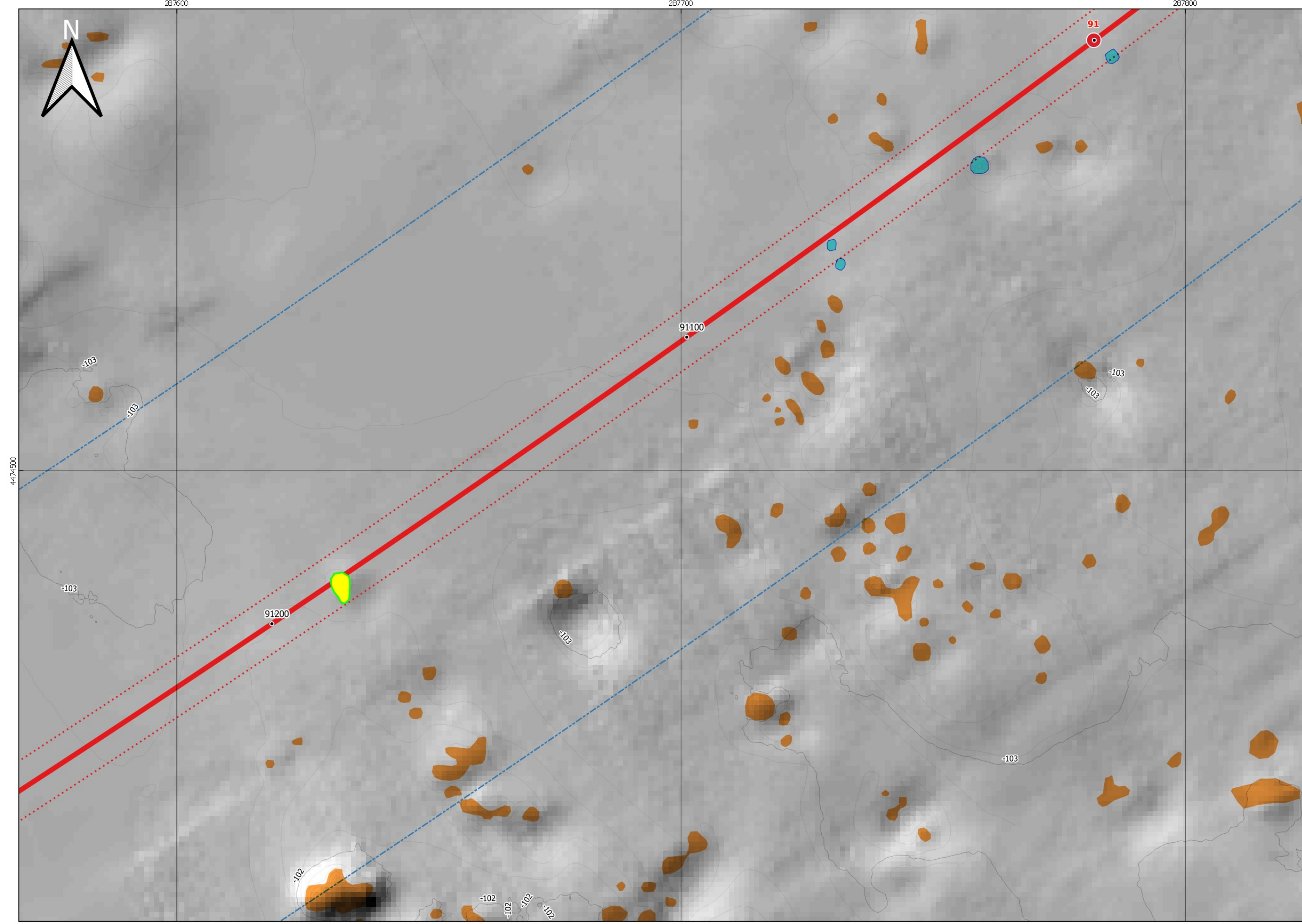
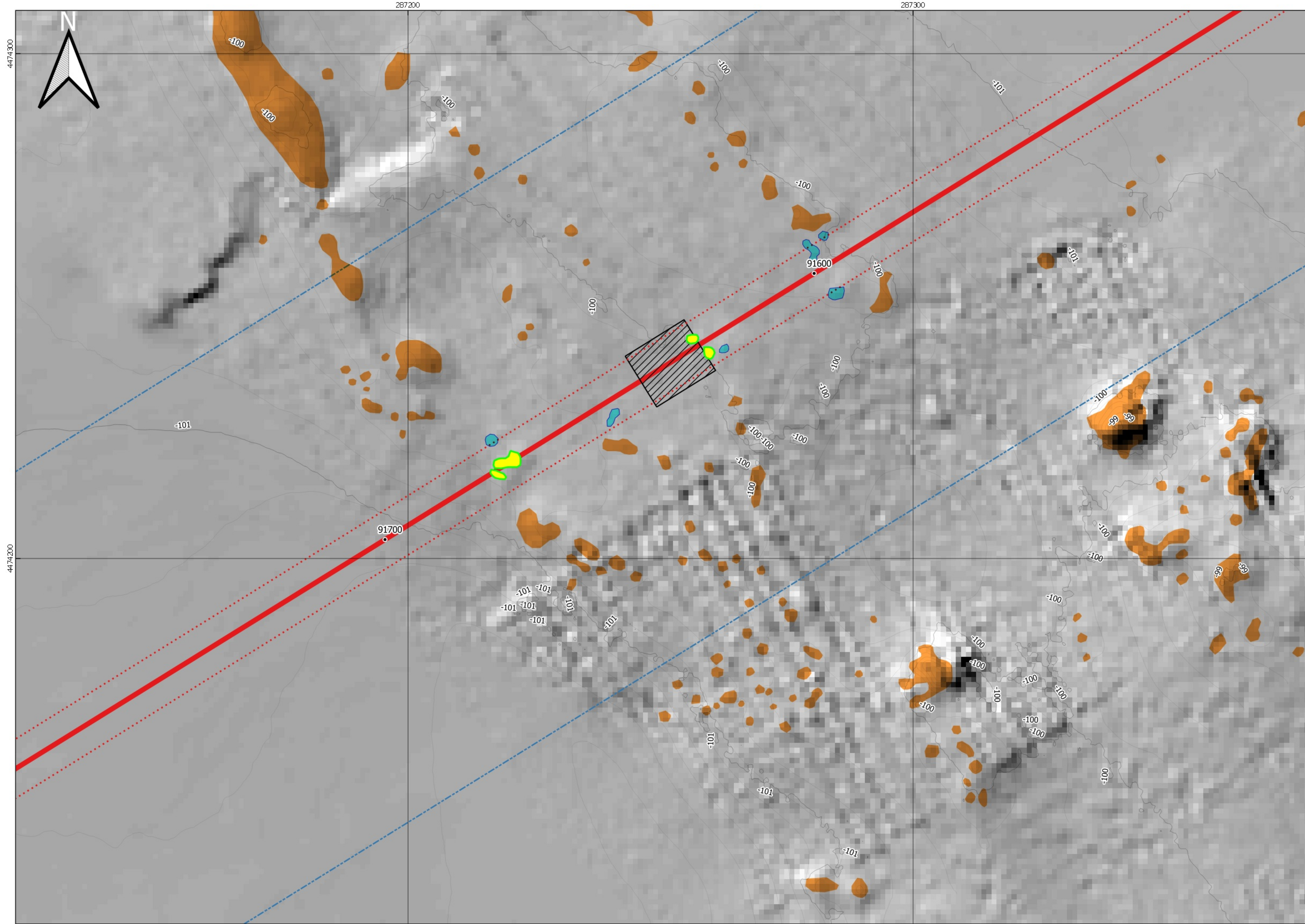


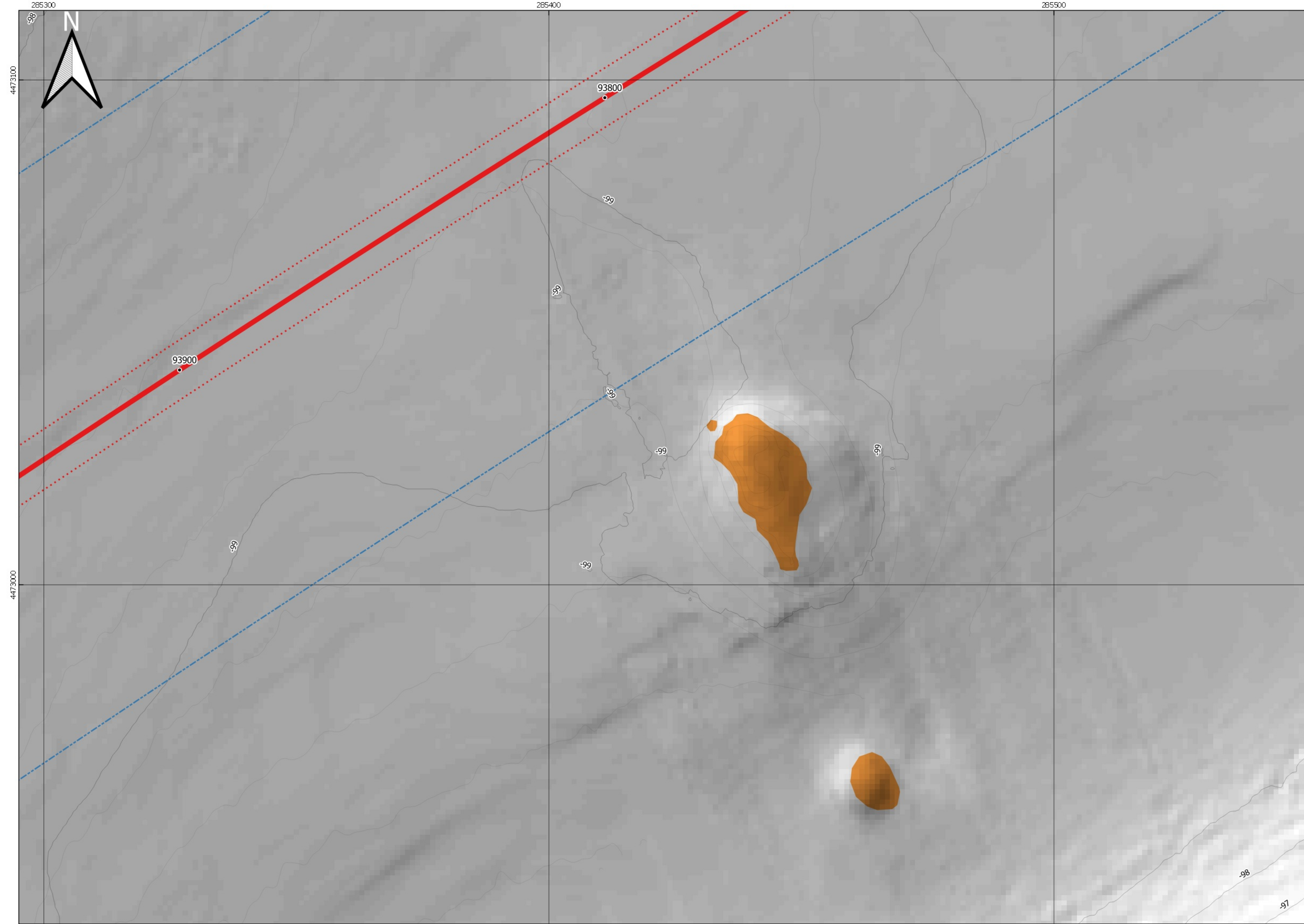
AREA 1



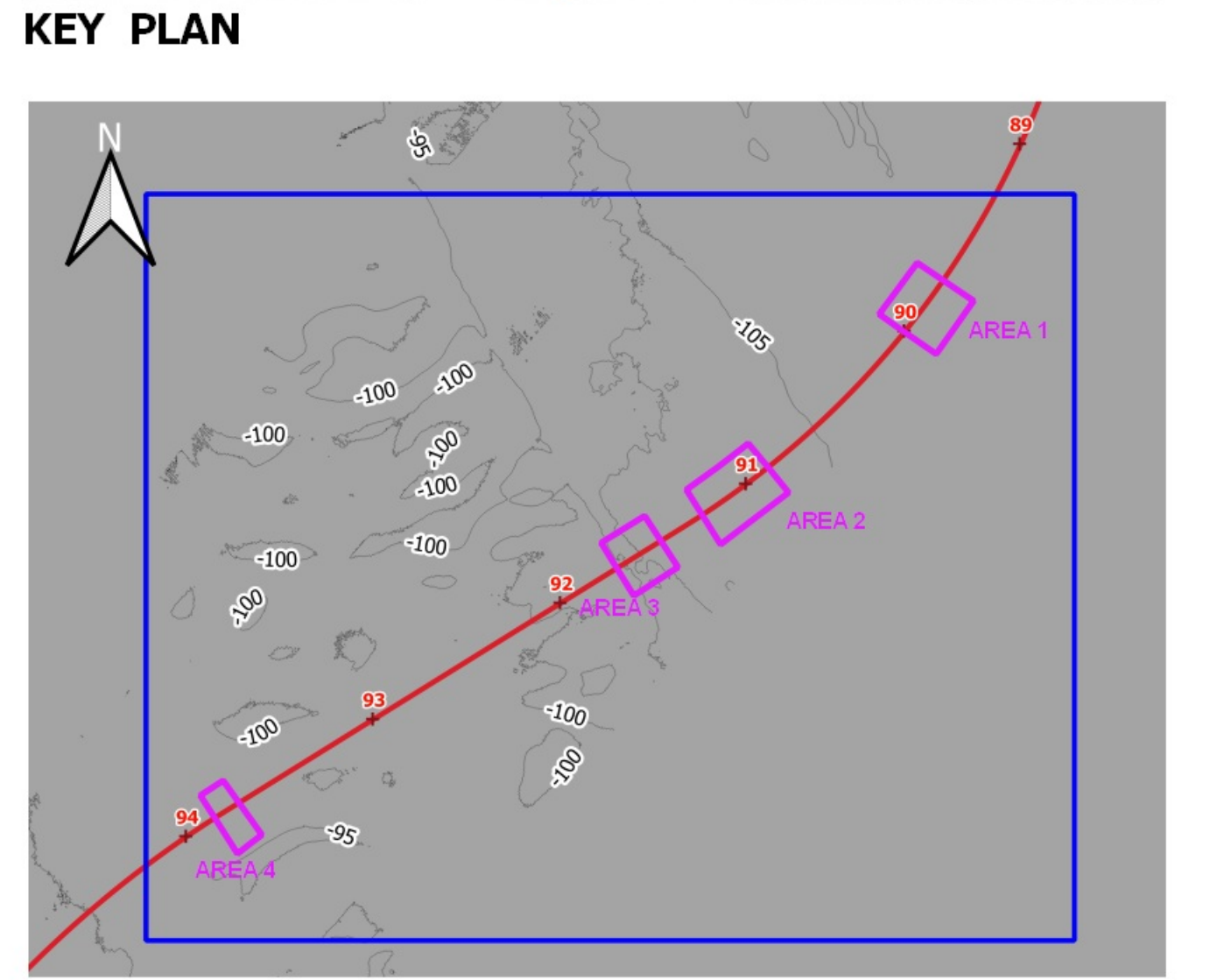
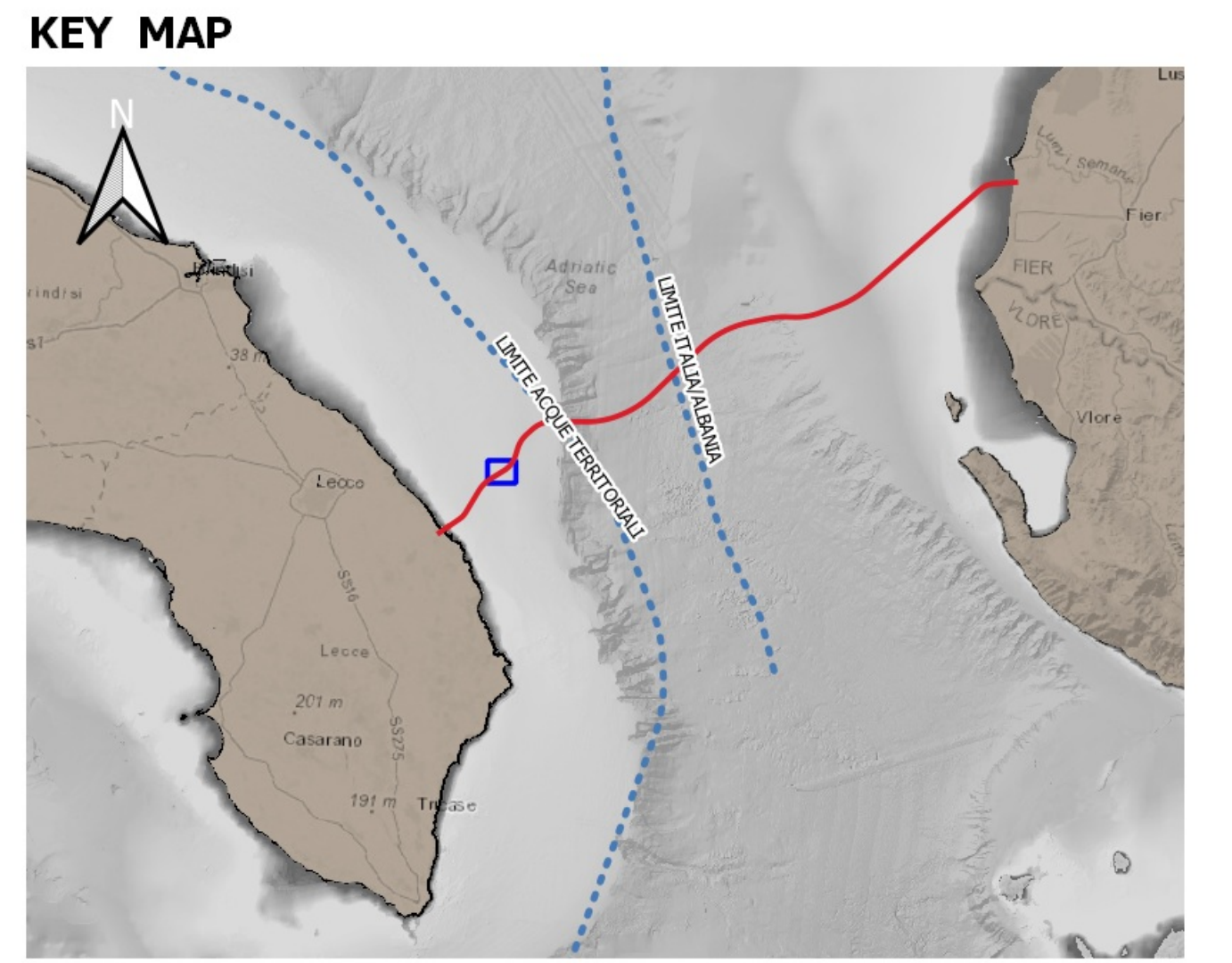
AREA 2



AREA 3



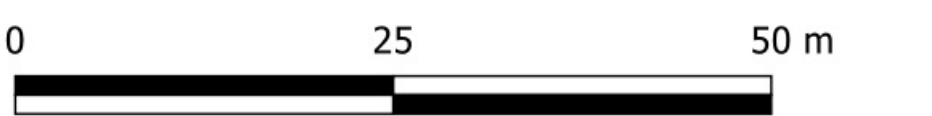
AREA 4




- LEGENDA**
- Pipeline/FOC (Footprint)
  - Corridoio di Varo (+/- 5 m)
  - Buffer 50 m (Pipeline/FOC)
  - Post-Lay
  - Strutture a letti di ostriche interferite
  - Strutture a letti di ostriche presenti nel corridoio di varo +/- 5m
  - Strutture a letti di ostriche

NOTE:  
 Strutture a letti di ostriche identificate con rilievi ROV e classificate dall'Istituto Nazionale di Oceanografia e Geofisica Sperimentale (OGS) (Campagna Giugno 2016). Digitalizzazione su Rilievi Geofisici MBES/SSS (Campagne ST12590 e FUGRO 2016).

Coordinate System Reference: WGS84 (ETRF 1989) Datum, WGS84 Spheroid  
 Grid coordinates are in metres on the Universal Transverse Mercator Projection, Zone 34 N, Central Meridian 21°E.



														
SUPPLIER DOCUMENT NUMBER 16-1352	REVISION NO. 0	<b>RI</b>												
<table border="1" style="width: 100%; border-collapse: collapse;"> <thead> <tr> <th>REV. NO.</th> <th>DESCRIPTION</th> <th>DATE</th> <th>BY</th> <th>CHKD.</th> <th>APPR.</th> </tr> </thead> <tbody> <tr> <td> </td> <td> </td> <td> </td> <td> </td> <td> </td> <td> </td> </tr> </tbody> </table>			REV. NO.	DESCRIPTION	DATE	BY	CHKD.	APPR.						
REV. NO.	DESCRIPTION	DATE	BY	CHKD.	APPR.									
PROJECT TITLE <b>TAP Trans Adriatic Pipeline Project</b> ALLEGATO 6 – INQUADRAMENTO DI DETTAGLIO AFFIORAMENTI AREE 1, 2, 3, 4		DRAWING NO. <b>3</b>												
FORMAT <b>A0+</b>	SCALE <b>1:500</b>	REVISION NO. <b>0</b>												
DRAWING NO. <b>OPL00 - C493 - 150 - Y - TRX - 0015</b>														