

NOTE GENERALI

NOTE: TUTTE LE DIMENSIONI SONO IN MILLIMETRI. SALVO OVE DIVERSAMENTE INDICATO.

1: NON PRESSO LE BARRE TRASVERSALI
2: CAVO COASSIALE DA 1/2"
3: LEAKY COASSIALE 1/2"

LEGENDA:

- CAVO COASSIALE
- LEAKY COASSIALE
- FIBRA OTTICA MONOMODALE
- FIBRA TETRA FED RIPETITORE OTTICO
- SEPARATORE 3dB RF
- ANTENNA 6dBi
- RF TAP

ELABORATI DI RIFERIMENTO:

- CG1000-P1RDPIT-S9T1000000-01: SISTEMA DI TELECOMUNICAZIONE PRINCIPALI GENERALI
- CG1000-P1ADPT-S9T1000000-01: SISTEMA DI TELECOMUNICAZIONE PLANIMETRICA E DETTAGLI
- CG1000-P1RDPIT-S9T1000000-04: TETRA - TIPICI D'INSTALLAZIONE - BLOCCO DI ANCORAGGIO SICILIA
- CG1000-P1RDPIT-S9T1000000-05: TETRA - TIPICI D'INSTALLAZIONE - BLOCCO DI ANCORAGGIO CALABRIA

NOTES:

DIMENSIONS ARE IN MILLIMETRES UNLESS OTHERWISE NOTED.

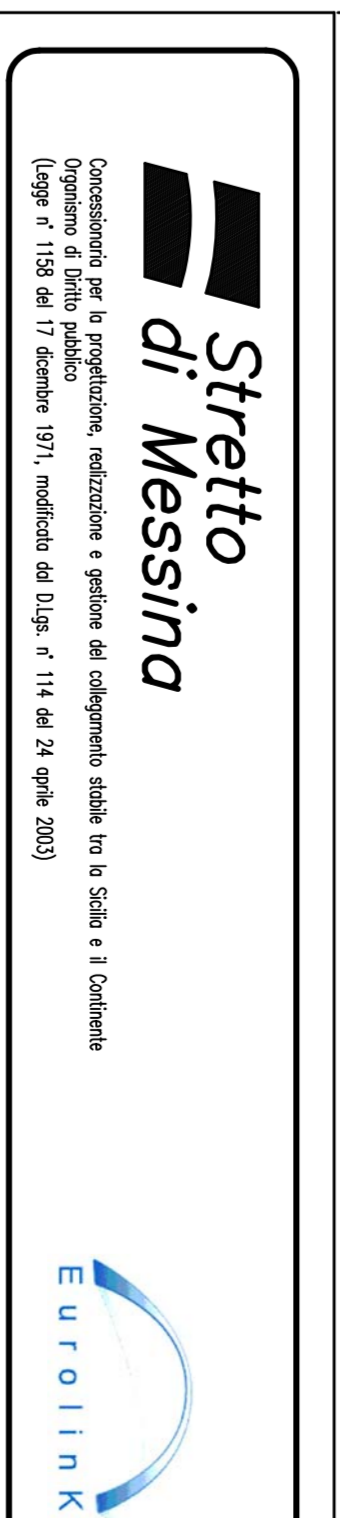
1. NOT AT CROSS BEAMS
2. 1/2" COAXIAL CABLE
3. 1/2" LEAKY COAX

LEGENDS:

- COAXIAL CABLE
- LEAKY COAX
- OPTICAL FIBRE FED OPTIC REPEATER
- 3dB RF-SPLUTTER
- 6dBi ANTENNA
- RF TAP

REFERENCES:

- CG1000-P1RDPIT-S9T1000000-01: TELECOMUNICAZIONE PRINCIPALI
- CG1000-P1ADPT-S9T1000000-01: TELECOMUNICAZIONE PLAN AND SECTIONS
- CG1000-P1RDPIT-S9T1000000-04: TETRA - TYPICAL INSTAL. DETAILS
- CG1000-P1RDPIT-S9T1000000-05: TETRA - TYPICAL INSTAL. DETAILS - ANCHOR BLOCK - CALABRIA



Strepto di Messina
EUROLINK

PONTE SULLO STRETTO DI MESSINA

PROGETTO DEFINITIVO

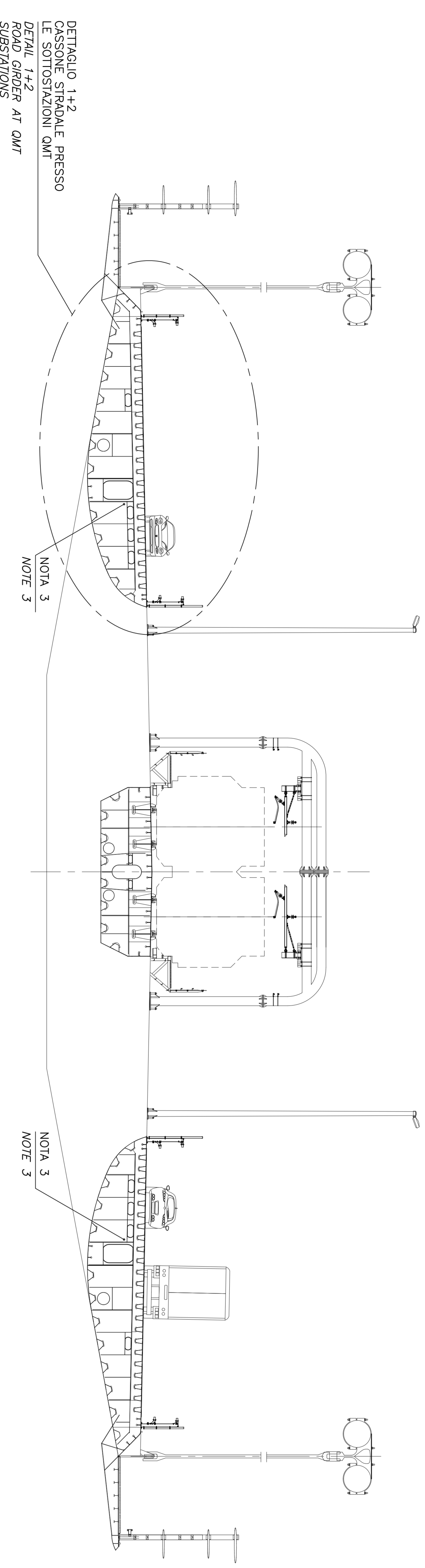
EUROLINK S.C.S.p.A.
INGEGNERIA S.p.A. (Member of the EuroLink Group)
CORPORATIVE BRANDING & SIGNAGE S.p.A. (Member of the EuroLink Group)
ACI S.C.S.p.A. - CONSORZIO STRETTO DI MESSINA

PROGETTA COMI Ing. E.A. Vito Proj. Mgr. (Project Manager) (Ing. P. P. Marcheselli)	IL COMPONENTE GENERALE Direttore Generale e Responsabile (Ing. G. Palmigiano)	STRETTO DI MESSINA Amministratore Delegato (Dott. F. Cicci)
--	--	--

OPERA D'ATTRAVERSAMENTO P10074_F0
IMPIANTI TECNOLOGICI SPECIALI
TELECOMUNICAZIONE FERROVIARIA
TETRA - PONTI E TORRI - TYPICI D'INSTALLAZIONE

ROV. DATA	REVISIONE	GERENTE	INCARICATO
TEL. 091/2672031	EMMISSIONE FINALE	1987/09/11	1988/02/01
1987/09/11			
1987/09/11			

SEZIONE TRASVERSALE
SCALA 1:100
CROSS SECTION
SCALE 1:100

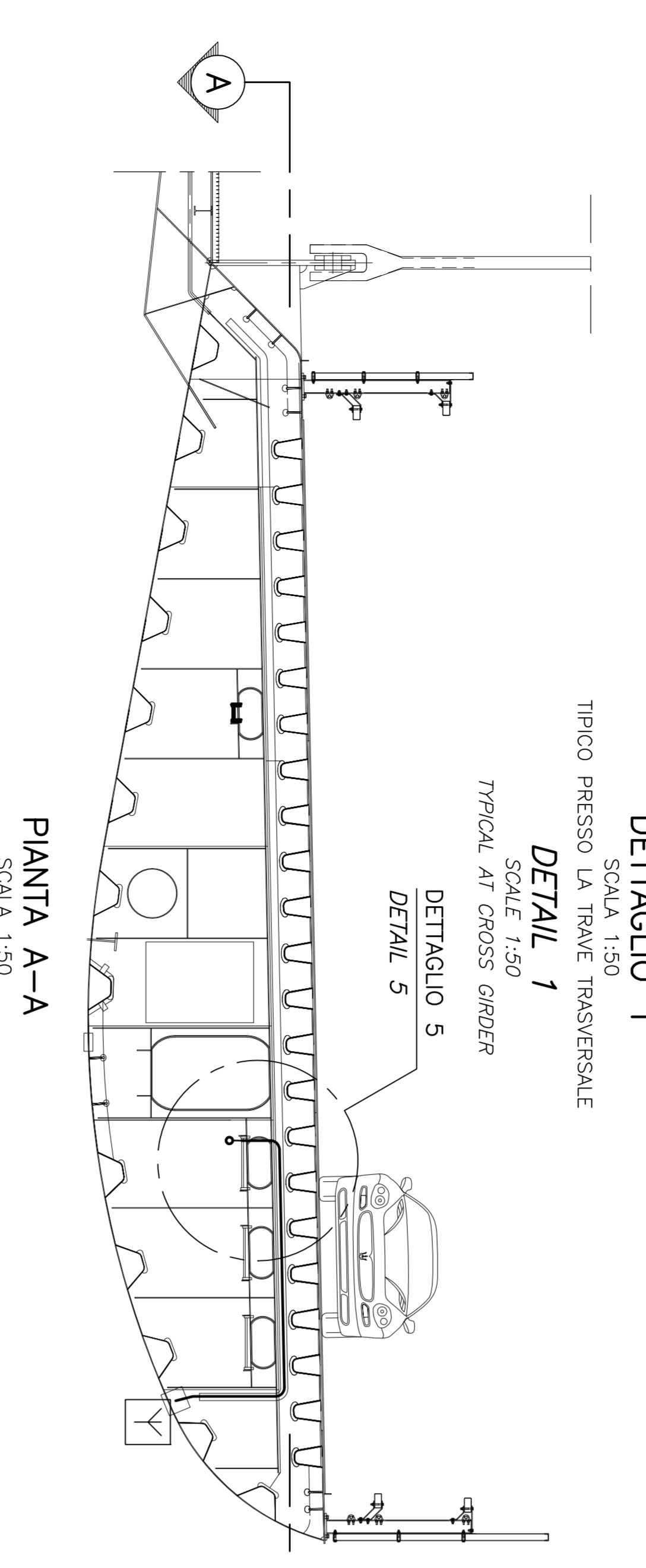


DETTAGLIO 1+2
CASSONI STAZIONI OMT
DETAIL 1+2
ROAD GRADER AT QMT STATIONS

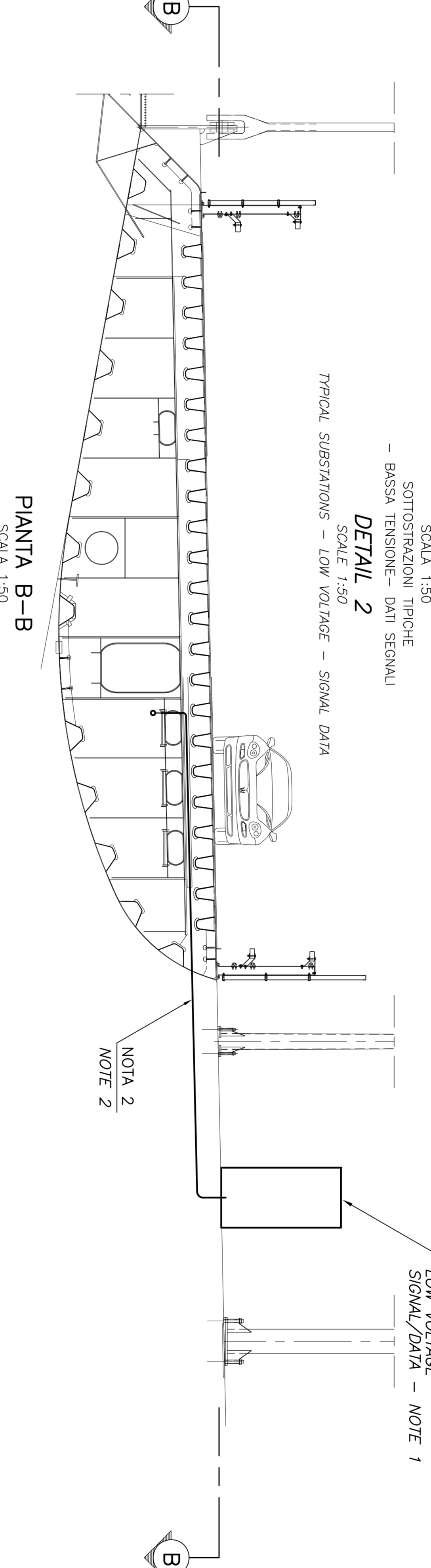
DETTAGLIO 2
SCALA 1:300
SOTTOSTAZIONE OMT
SESSANTATELLE
SEMIFIBRILLARE
OMV SUBSTATION
LOW VOLTAGE
SIGNAL/DATA - NOTE 1

DETTAGLIO 2
SCALA 1:300
SOTTOSTAZIONE OMT
SESSANTATELLE
SEMIFIBRILLARE
OMV SUBSTATION
LOW VOLTAGE
SIGNAL/DATA - NOTE 1

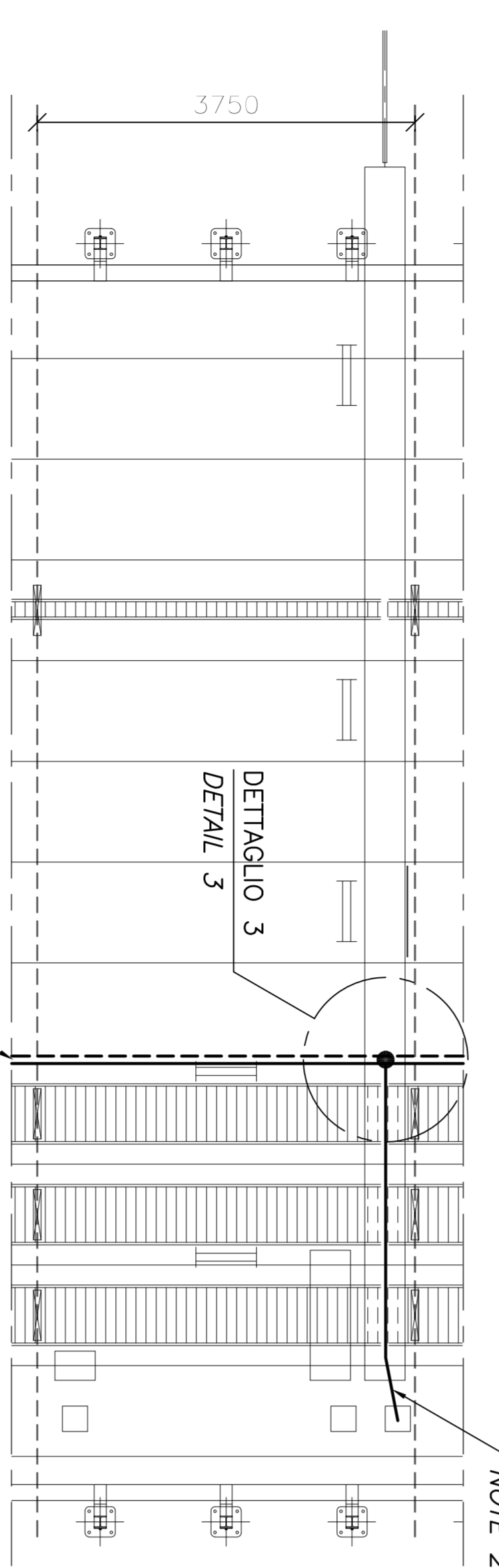
DETTAGLIO 1
SCALA 1:50
TIPICO PRESSO LE BARRE TRASVERSALI
DETAIL 1
SCALE 1:50
TYPICAL AT CROSS BEAMER
DETAIL 5



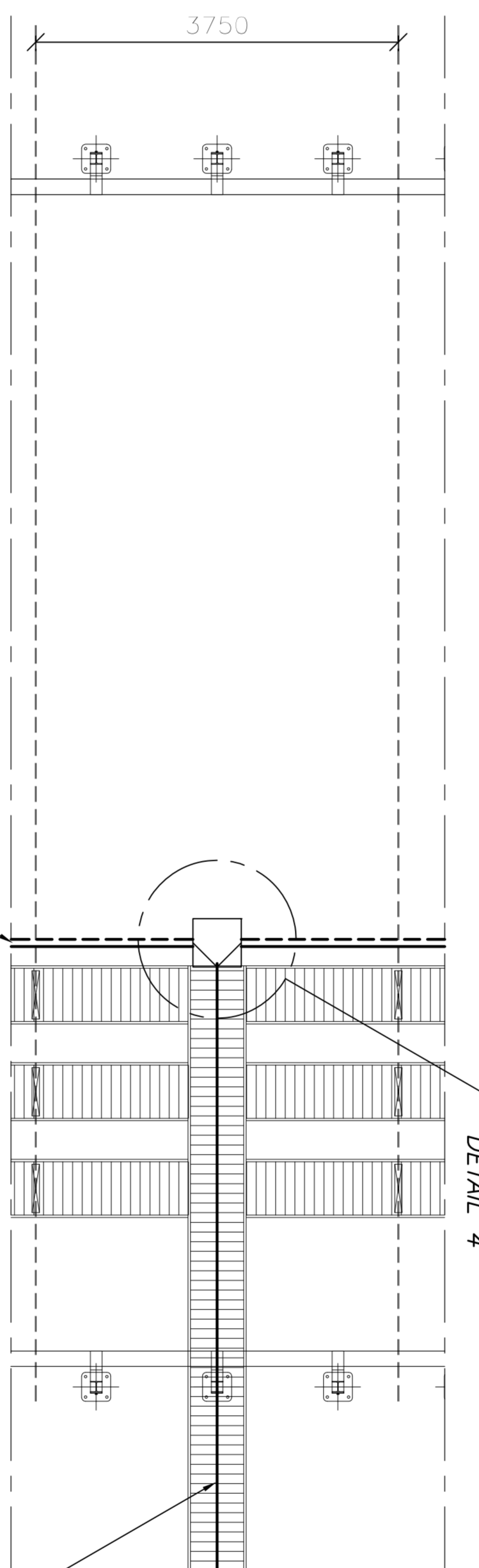
PIANTA A-A
SCALA 1:300
PLAN A-A
SCALE 1:300



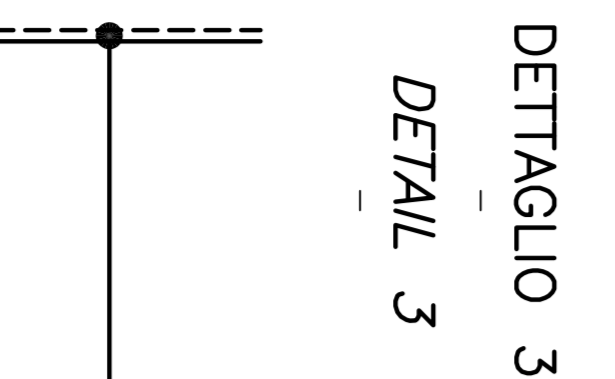
PIANTA B-B
SCALA 1:300
PLAN B-B
SCALE 1:300



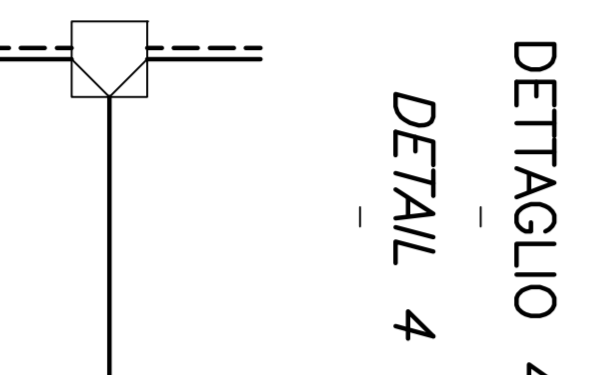
DETTAGLIO 1
SCALA 1:50
TIPICO PRESSO LE BARRE TRASVERSALI
DETAIL 1
SCALE 1:50
TYPICAL AT CROSS BEAMER
DETAIL 5



DETTAGLIO 2
SCALA 1:300
SOTTOSTAZIONE OMT
SESSANTATELLE
SEMIFIBRILLARE
OMV SUBSTATION
LOW VOLTAGE
SIGNAL/DATA - NOTE 1

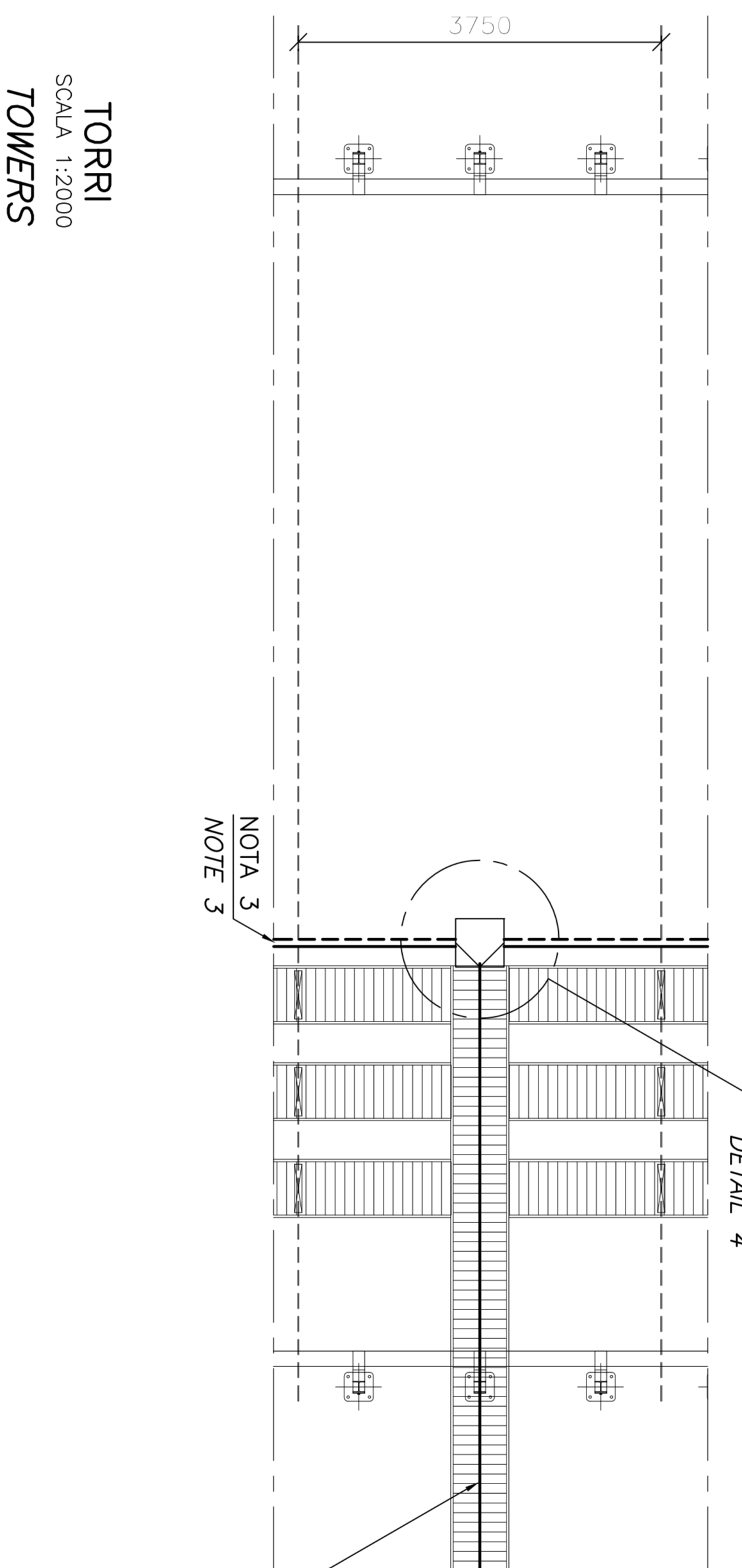


DETTAGLIO 3
DETAIL 3



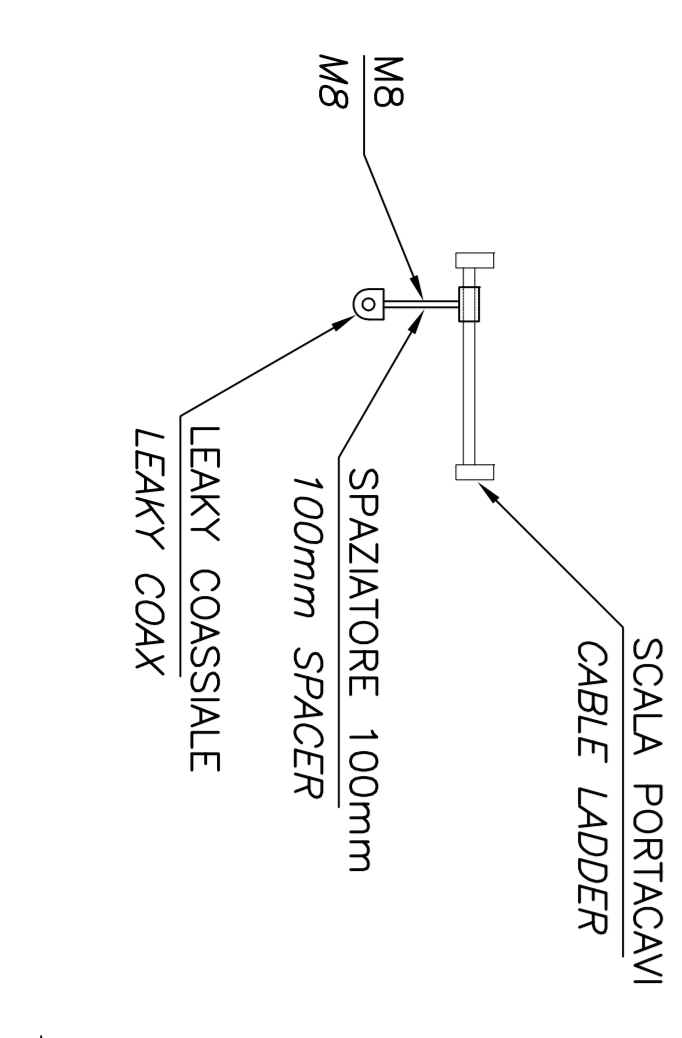
DETTAGLIO 4
DETAIL 4

TORRI
SCALA 1:2000
TOWERS
SCALE 1:2000



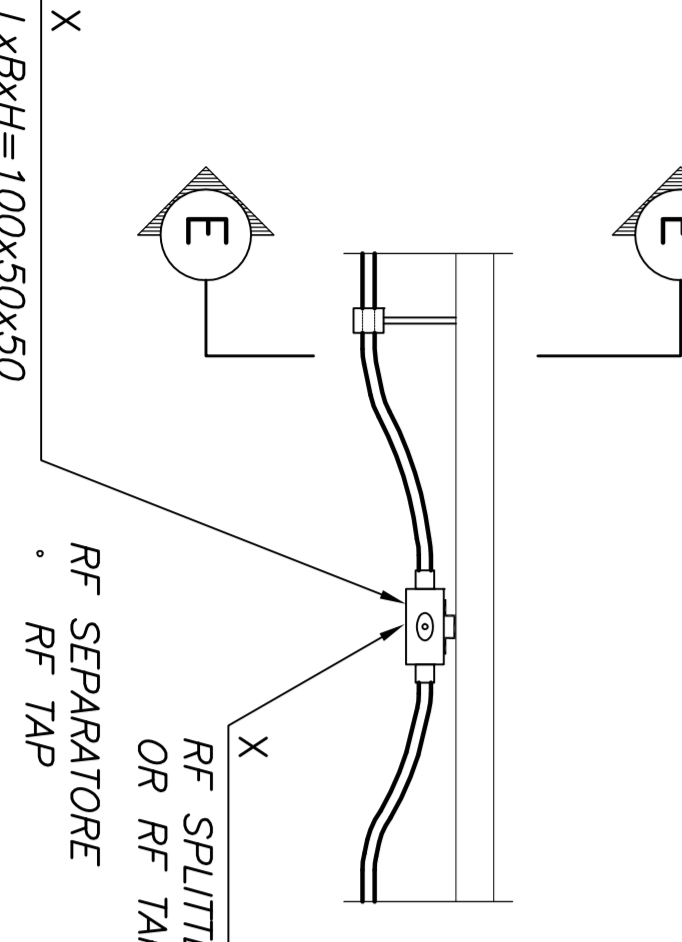
SEZIONE E-E

SCALA 1:10
SECTION E-E
SCALE 1:10



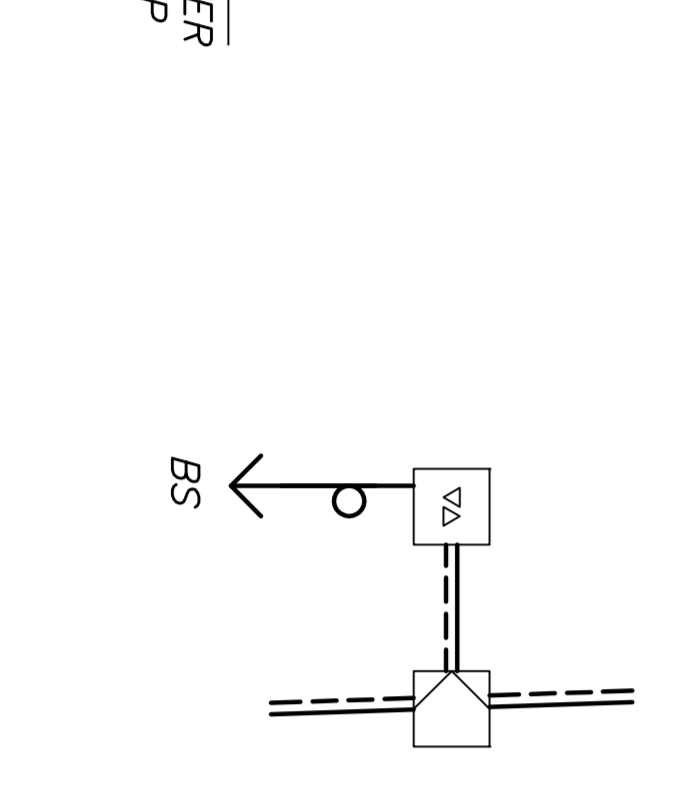
DETTAGLIO 5

SCALA 1:10
DETAIL 5
SCALE 1:10



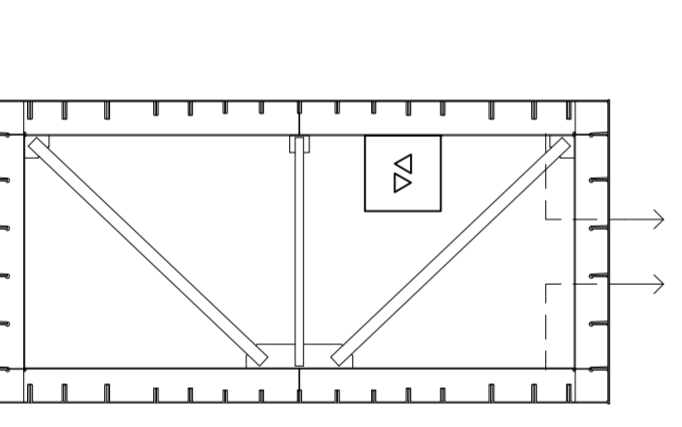
DETTAGLIO 6

DETAIL 6



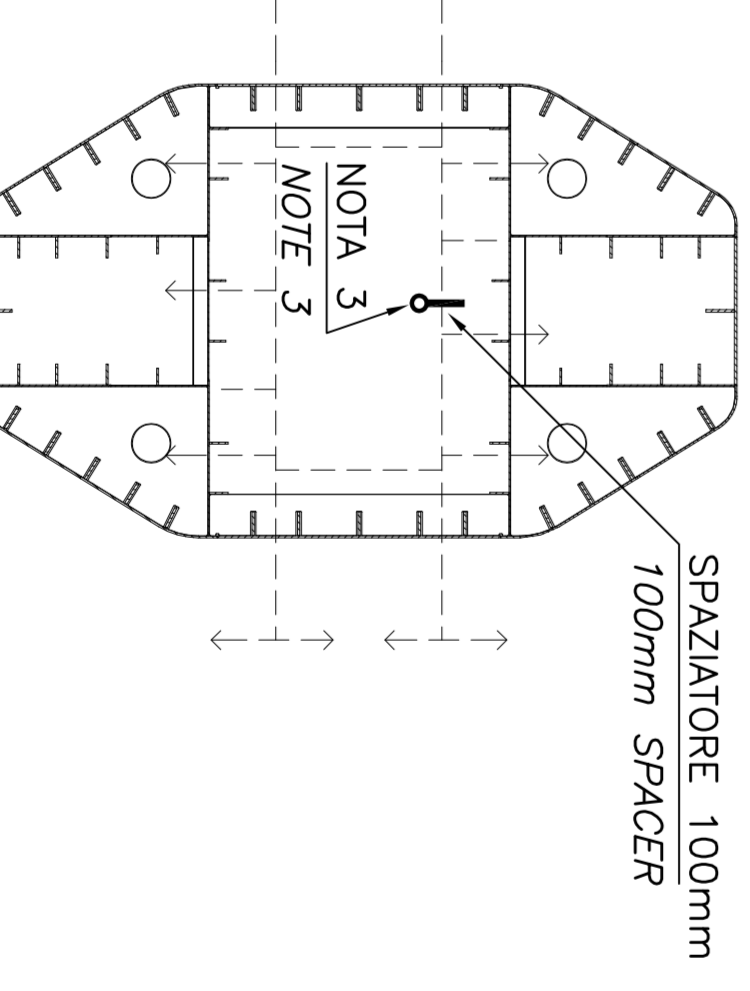
SEZIONE C-C

SCALA 1:200
SECTION C-C
SCALE 1:200



SEZIONE D-D

SCALA 1:200
SECTION D-D
SCALE 1:200



SCALAZIONE
100mm SPACER