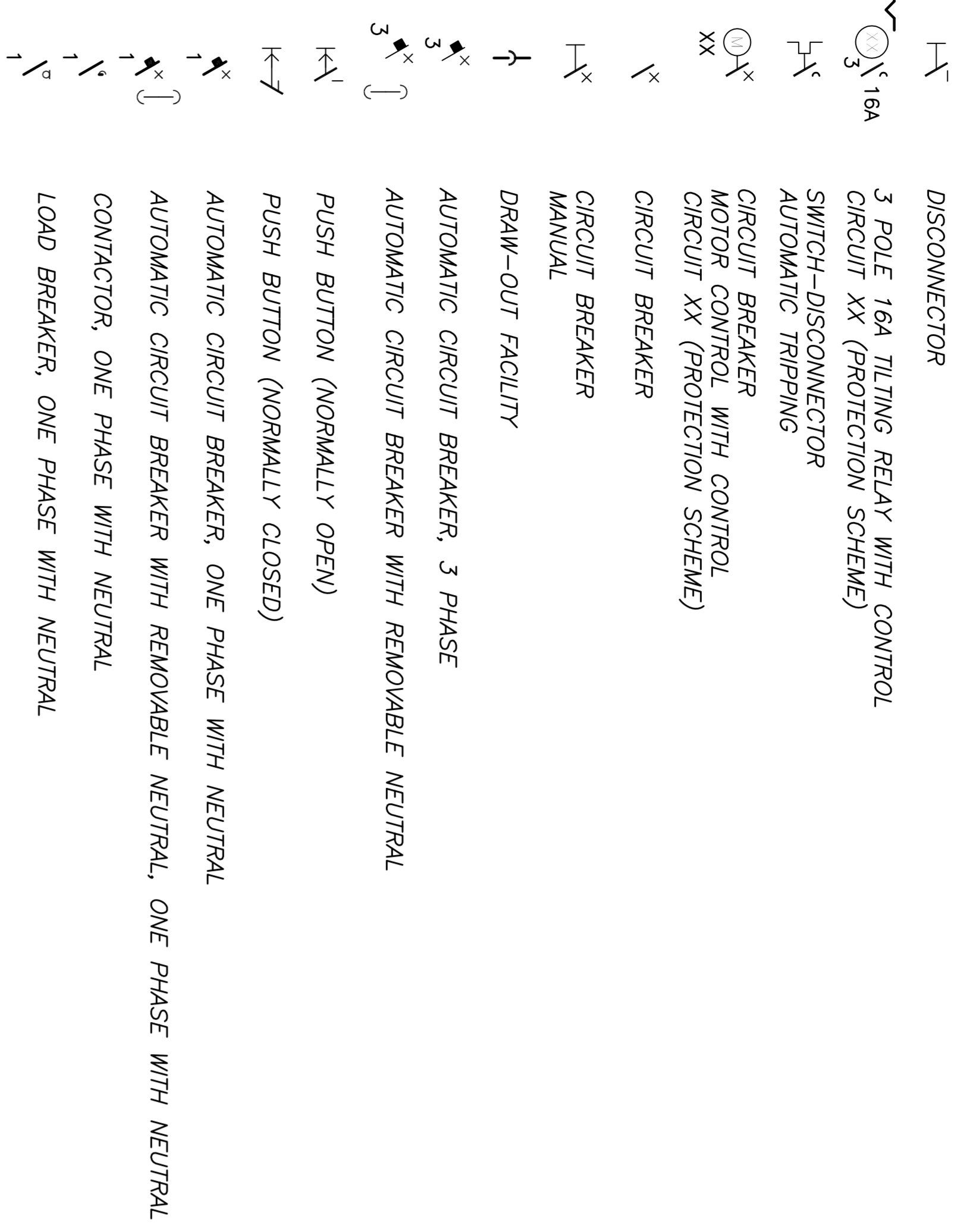
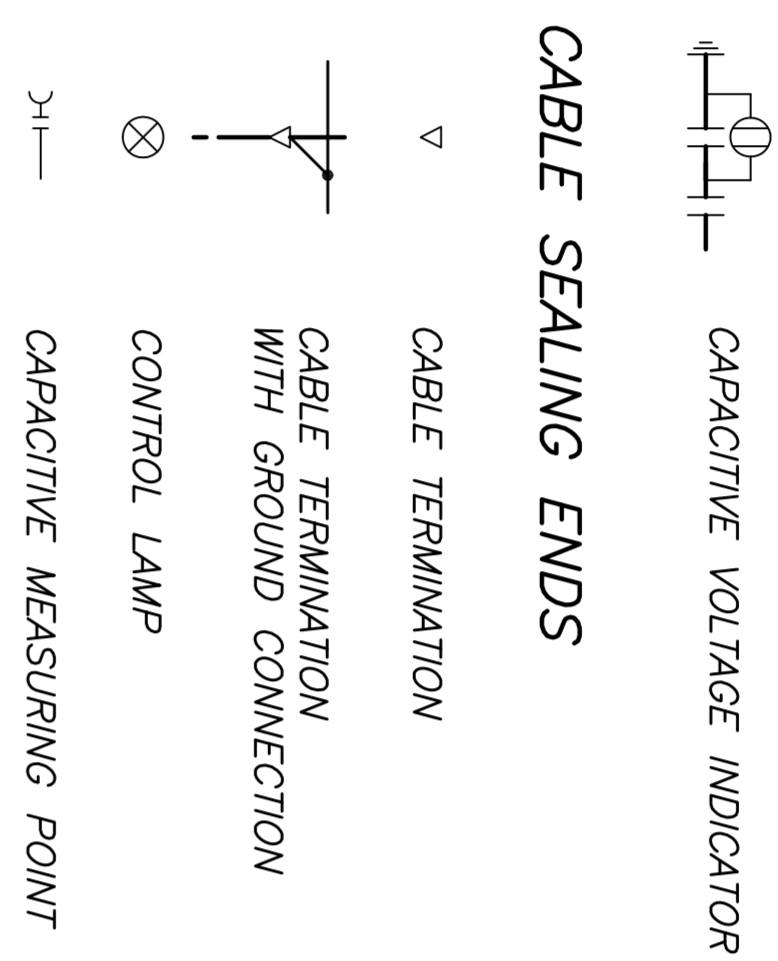


NOTE GENERALI

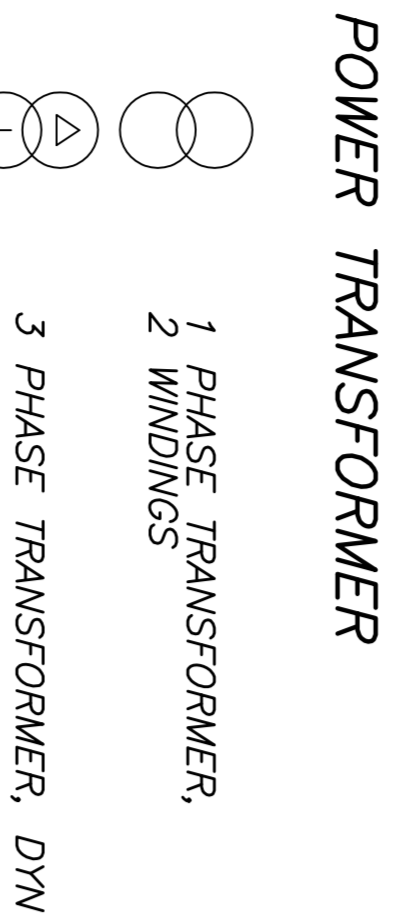
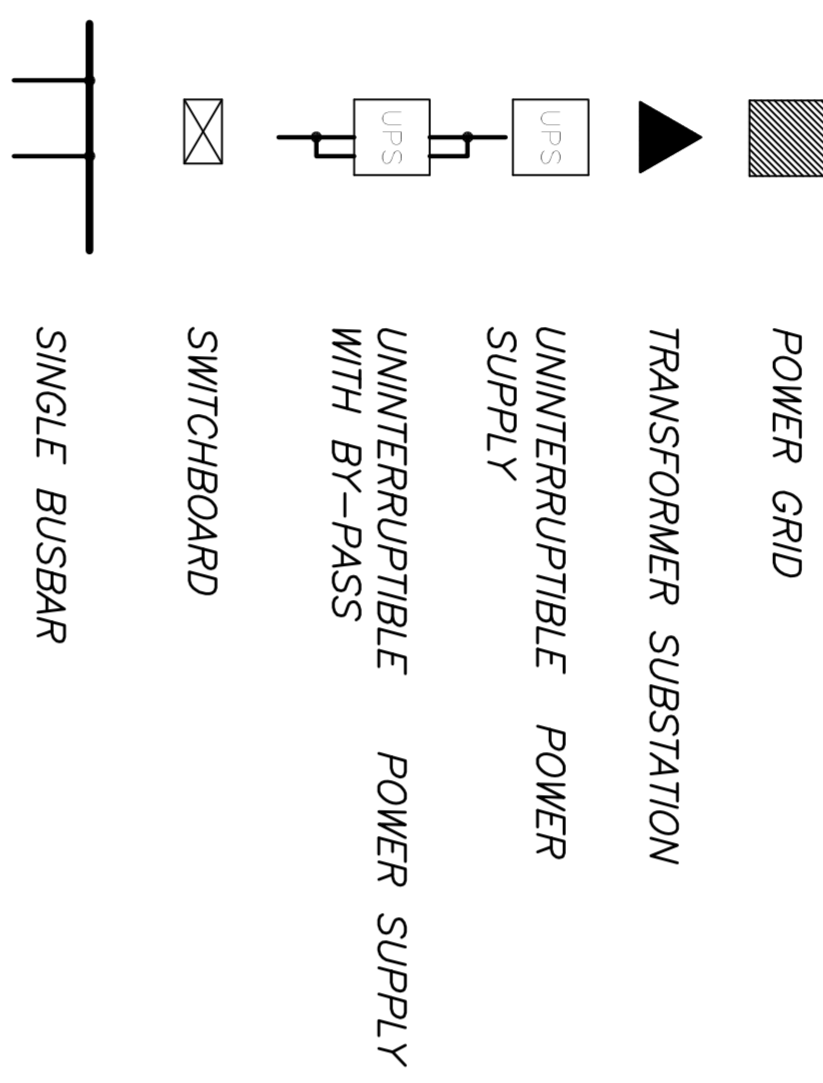
SWITCHES AND CIRCUIT BREAKERS



INDICATORS



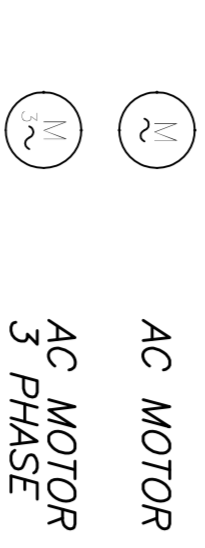
POWER SUPPLY



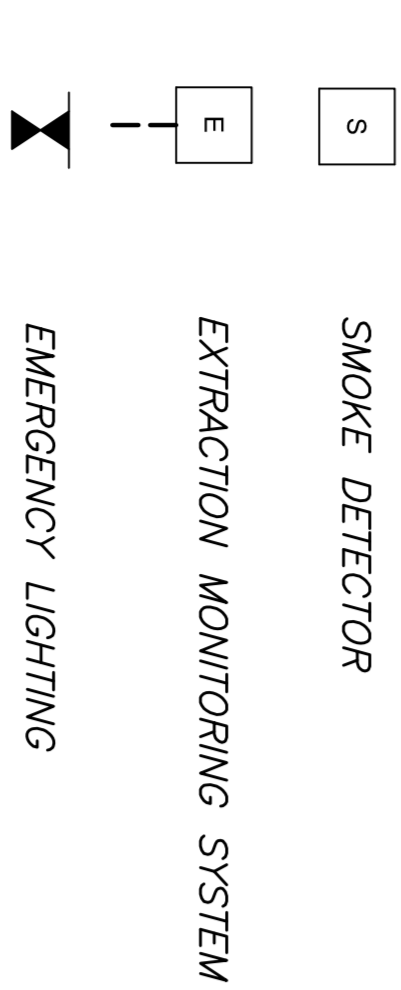
AC GENERATOR



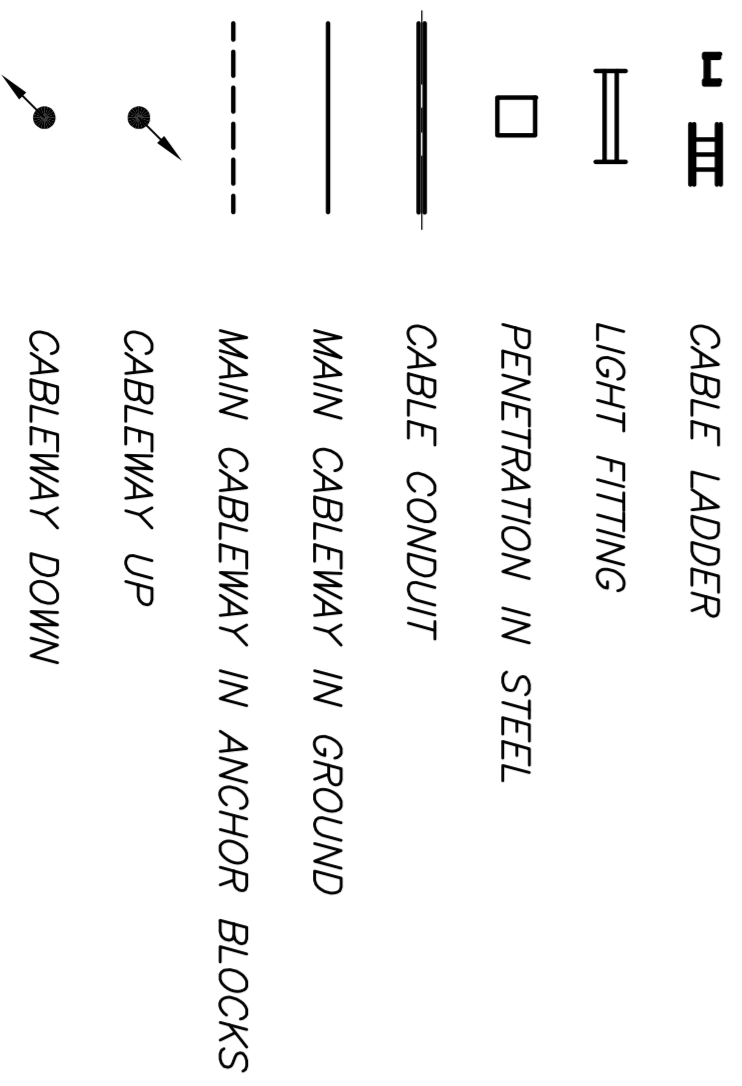
AC MOTORS



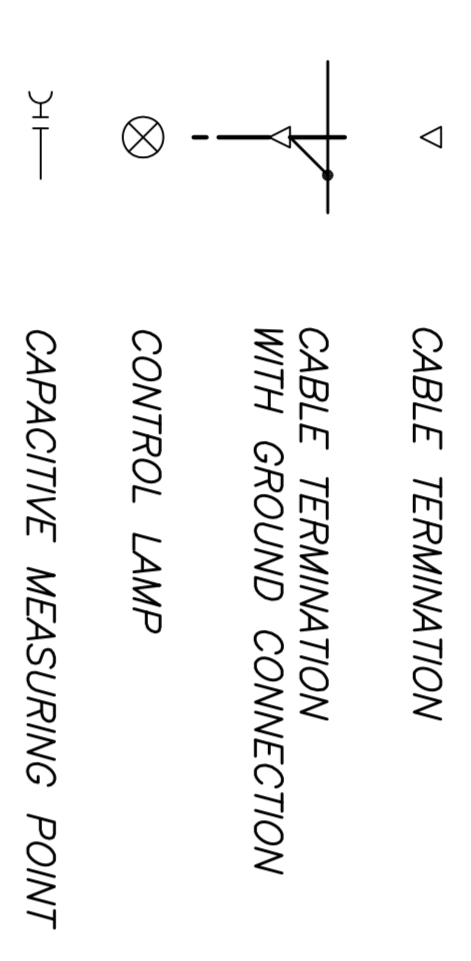
DETECTORS



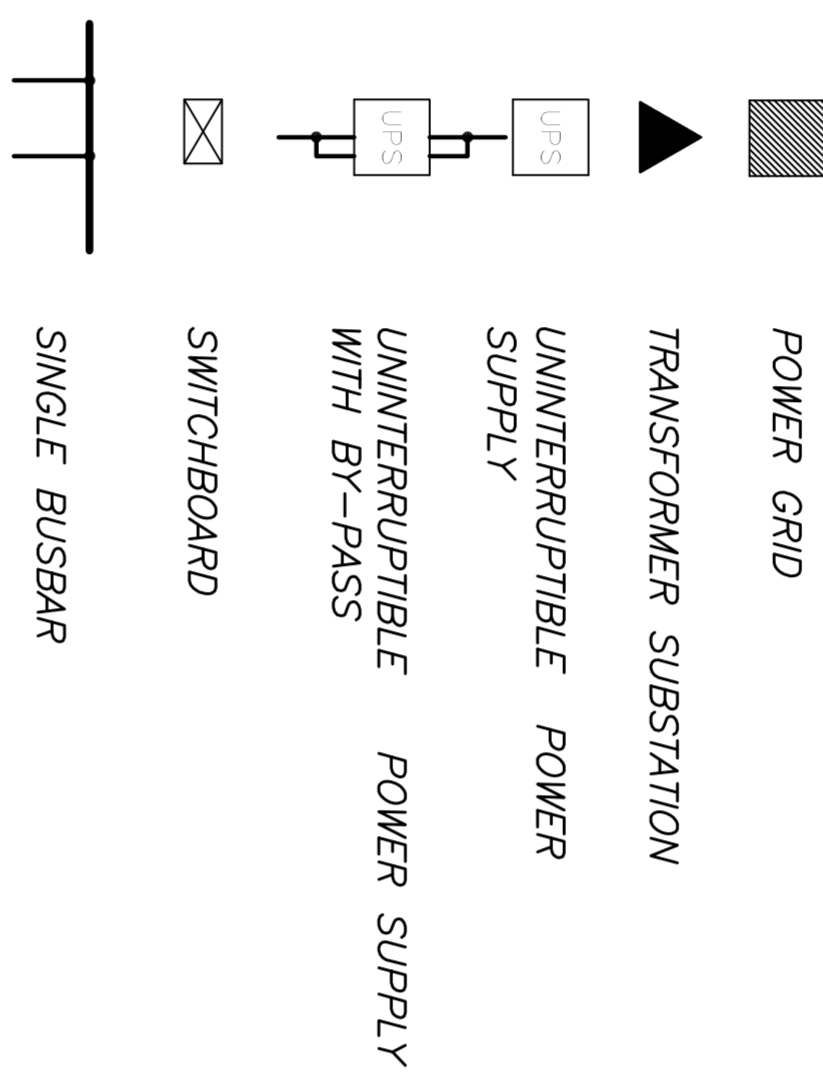
CABLES AND CABLE WAYS



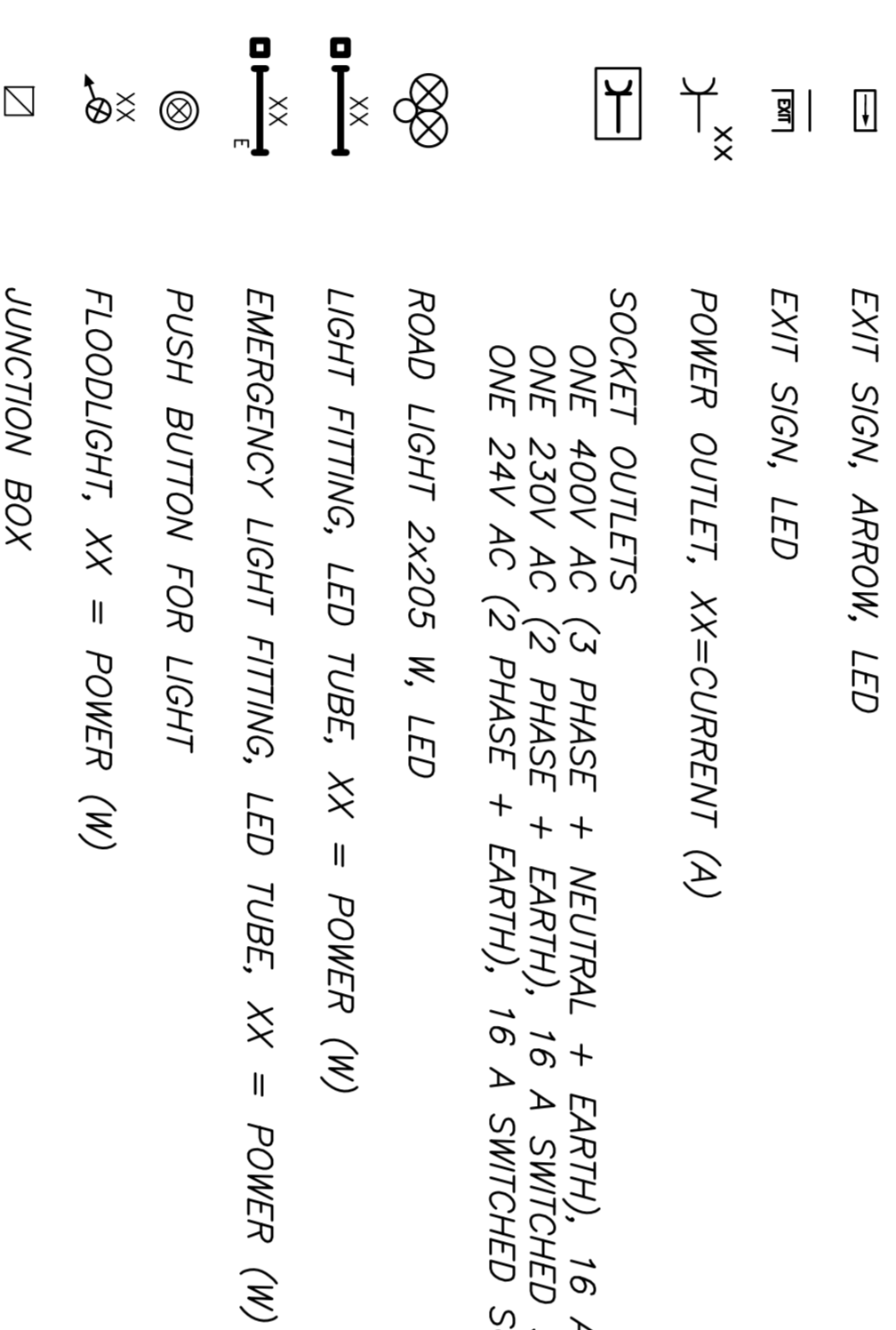
CABLE SEALING ENDS



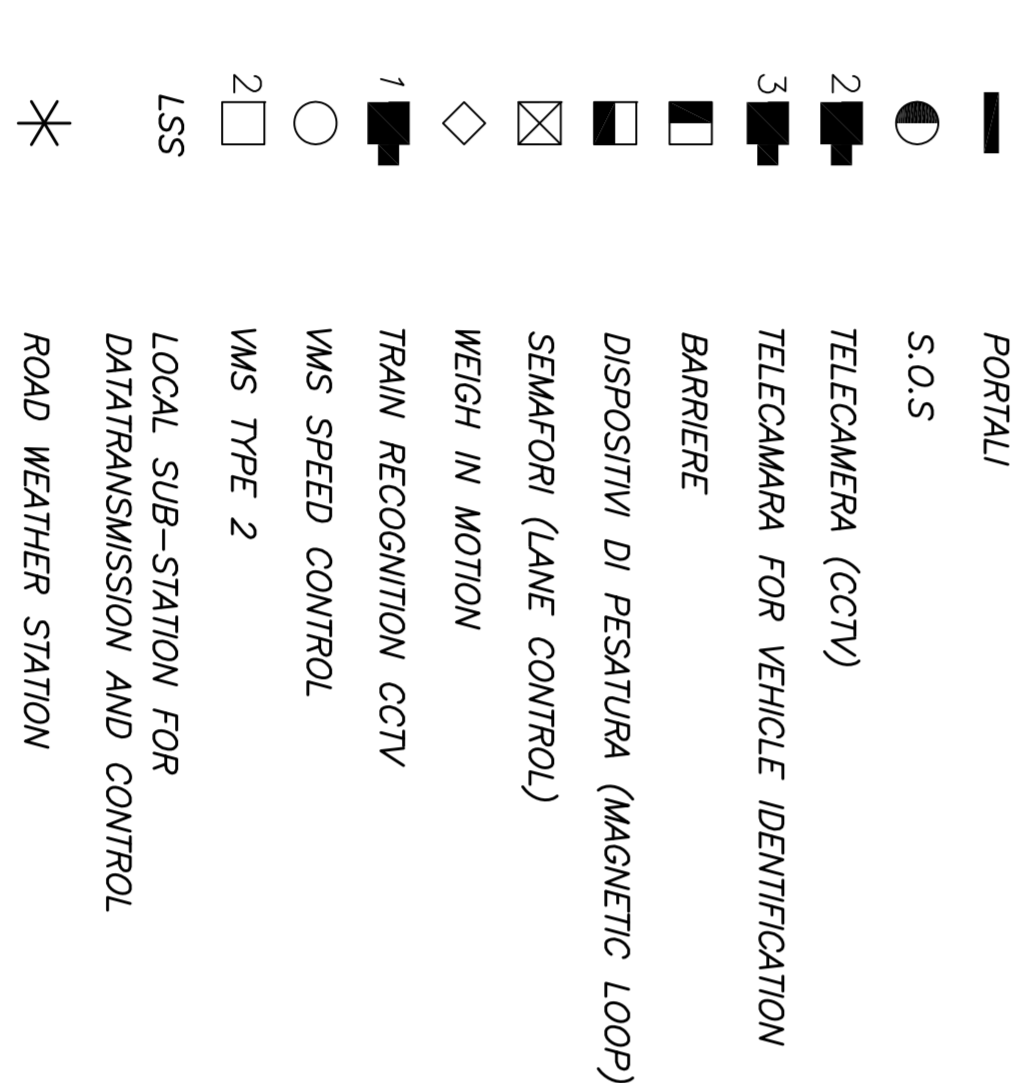
POWER SUPPLY



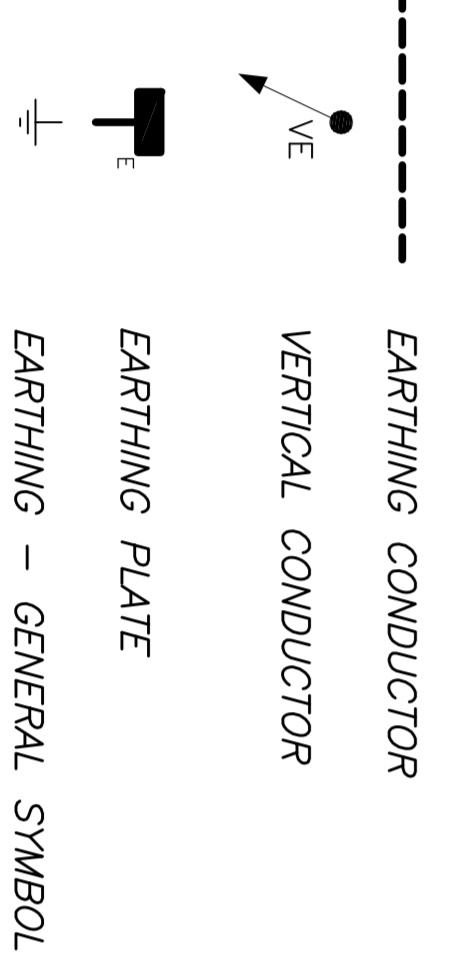
LIGHTING AND SMALL POWER



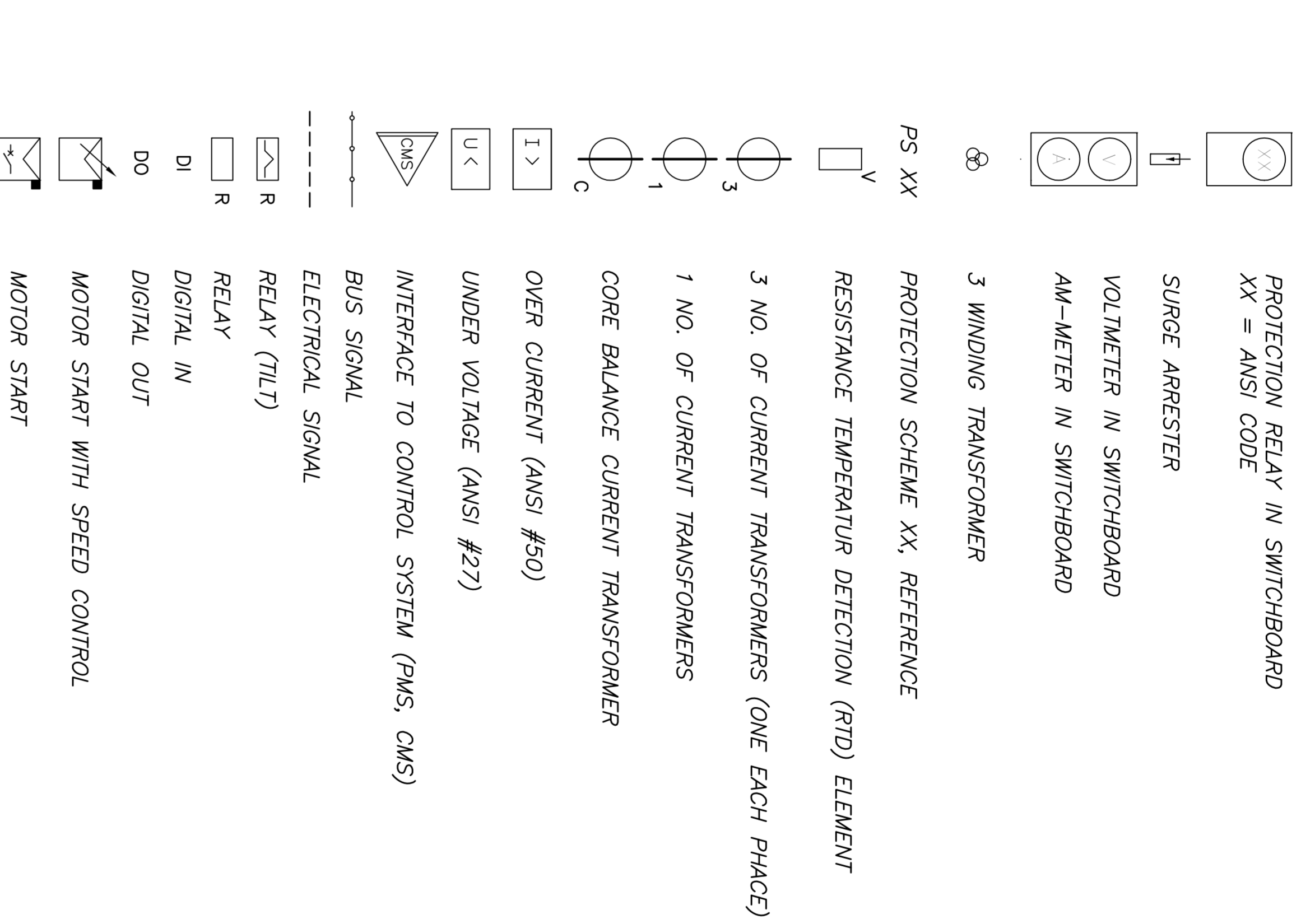
SURVILLANCE



EARTHING



PROTECTION AND CONTROL



ANSI CODES

27	UNDERVOLTAGE
27*	DEAD BUS RELAY - 0V
32	DIRECTIONAL POWER
40	FIELD FAULT
46	REVERSE-PHASE
49T	THERMAL RELAY, 2 SETTINGS
50/51	OVERCURRENT
50G/51G	EARTH FAULT
59	OVERVOLTAGE
67	AC DIRECTIONAL OVERCURRENT
81L/H	FREQUENCY LOW/HIGH
87	DIFFERENTIAL RELAY

NOTE GENERALI

**Stretto di Messina**  
 Società Italiana per la gestione, l'edilizia e l'opera di manutenzione della Strada a 4 corsie  
 (Legge n° 103 del 17 febbraio 1971, articolo 48 bis e 49 e 50)

**EUROLINK S.C.S.P.A.**  
 IMPIANTI TECNOLOGICI  
 SOCIETÀ ITALIANA PER CONDOTTE D'ACQUA S.P.A. (Messina)  
 COOPERATIVA IMPIANTI E SISTEMI S.A.S. (Messina)  
 ISHIMAWAKI, HARIMA HEAVY INDUSTRIES CO. LTD. (Messina)  
 ACTI S.C.S.P.A. - CONSORCIO STRETTO DI MESSINA

**PONTE SULLO STRETTO DI MESSINA**  
 PROGETTO DEFINITIVO

**COMI**  
 Ing. E.A. Vito  
 (Ing. P.P. Marcheselli)

**EUROLINK S.C.S.P.A.**  
 Il Confindere Generale  
 Project Manager  
 Direzione Generale e  
 Direzione Tecnica  
 (Ing. G. Formaggio)

**STRETTO DI MESSINA**  
 Amministratore Delegato  
 (Dott. F. Ciucci)

**OPERA D'ATTRAVERSAMENTO**  
 IMPIANTI TECNOLOGICI  
 ELETTTRICI  
 GENERALI  
 VEI CANI - LEGENDA INGLESE

CODICE C I G I O O O P I A I D P I T I E I Z I O O O O O O I 2 F O S C A L K -	
ROLI DATA	REVISIONE
101 20/06/2011	MISSIONE FINALE
	REDAZIONE
	PROGETTO
	INTEGRAZIONI
	APPROVAZIONE
	DATA