

# PONTE SULLO STRETTO DI MESSINA



## PROGETTO DEFINITIVO

### EUROLINK S.C.p.A.

IMPREGILO S.p.A. (MANDATARIA)  
 SOCIETÀ ITALIANA PER CONDOTTE D'ACQUA S.p.A. (MANDANTE)  
 COOPERATIVA MURATORI E CEMENTISTI - C.M.C. DI RAVENNA SOC. COOP. A.R.L. (MANDANTE)  
 SACYR S.A.U. (MANDANTE)  
 ISHIKAWAJIMA - HARIMA HEAVY INDUSTRIES CO. LTD (MANDANTE)  
 A.C.I. S.C.P.A. - CONSORZIO STABILE (MANDANTE)



<p>IL PROGETTISTA</p>  <p>Ing. E.M. Veje          Dott. Ing. E. Pagani          Ordine Ingegneri Milano          n° 15408</p> 	<p>IL CONTRAENTE GENERALE</p> <p>Project Manager          (Ing. P.P. Marcheselli)</p>	<p>STRETTO DI MESSINA</p> <p>Direttore Generale e          RUP Validazione          (Ing. G. Fiammenghi)</p>	<p>STRETTO DI MESSINA</p> <p>Amministratore Delegato          (Dott. P. Ciucci)</p>
--	---	--	---

<p><i>Unità Funzionale</i></p> <p><i>Tipo di sistema</i></p> <p><i>Raggruppamento di opere/attività</i></p> <p><i>Opera - tratto d'opera - parte d'opera</i></p> <p><i>Titolo del documento</i></p>	<p>OPERA DI ATTRAVERSAMENTO</p> <p>IMPIANTI TECNOLOGICI</p> <p>ELETTRICI</p> <p>General</p> <p>Power Distribution Diagrams for Typical Medium Voltage Switchboards</p>	<p>PI0107_F0</p>
---	--	------------------

CODICE	C G 1 0 0 0	P	4 A	D	P	I T	E 2	0 0	0 0	0 0	0 0	0 3	F0
--------	-------------	---	-----	---	---	-----	-----	-----	-----	-----	-----	-----	----

REV	DATA	DESCRIZIONE	REDATTO	VERIFICATO	APPROVATO
F0	20/06/2011	EMISSIONE FINALE	JASJ	CFA	ABR/JCA





		<b>Ponte sullo Stretto di Messina</b> <b>PROGETTO DEFINITIVO</b>					
Power Distribution Diagrams for Typical Medium Voltage Switchboards		<i>Codice documento</i> PI0107_F0.doc	<table border="1" style="width: 100%; border-collapse: collapse;"> <thead> <tr> <th style="text-align: left;"><i>Rev</i></th> <th style="text-align: left;"><i>Data</i></th> </tr> </thead> <tbody> <tr> <td style="text-align: center;">F0</td> <td style="text-align: center;">20/06/2011</td> </tr> </tbody> </table>	<i>Rev</i>	<i>Data</i>	F0	20/06/2011
<i>Rev</i>	<i>Data</i>						
F0	20/06/2011						

## INDICE



INDICE .....		3
1 Introduction .....		5
2 Drawings .....		6



		<b>Ponte sullo Stretto di Messina</b> <b>PROGETTO DEFINITIVO</b>		
Power Distribution Diagrams for Typical Medium Voltage Switchboards		<i>Codice documento</i> <i>PI0107_F0.doc</i>	<i>Rev</i> <i>F0</i>	<i>Data</i> <i>20/06/2011</i>

## 1 Introduction

This document is prepared as documentation for MV switchgear form one of the possible manufacturers.

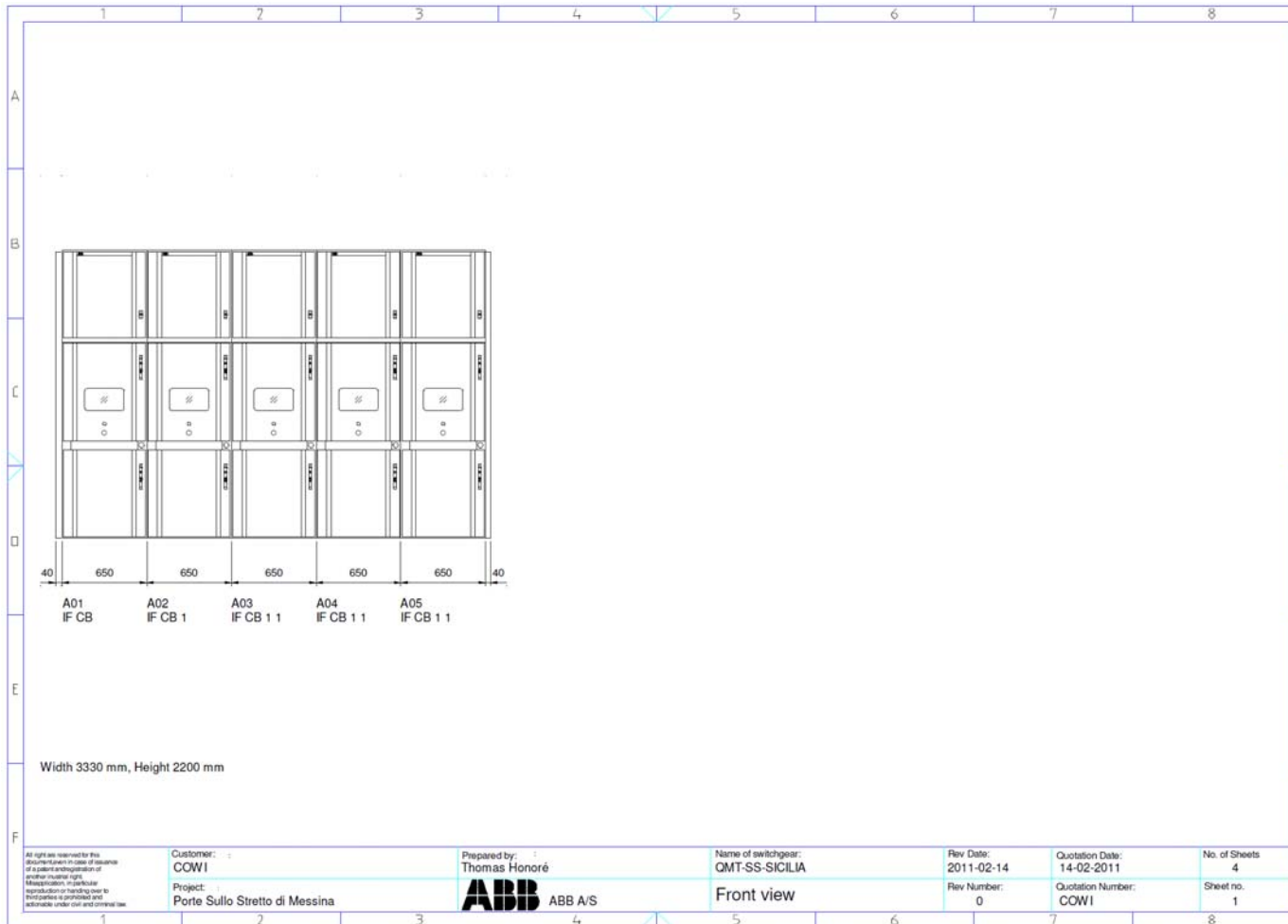
		<b>Ponte sullo Stretto di Messina</b> <b>PROGETTO DEFINITIVO</b>		
Power Distribution Diagrams for Typical Medium Voltage Switchboards		<i>Codice documento</i> P10107_F0.doc	<i>Rev</i> F0	<i>Data</i> 20/06/2011

## 2 Drawings

Power Distribution Diagrams for Typical  
Medium Voltage Switchboards

*Codice documento*  
PI0107\_F0.doc

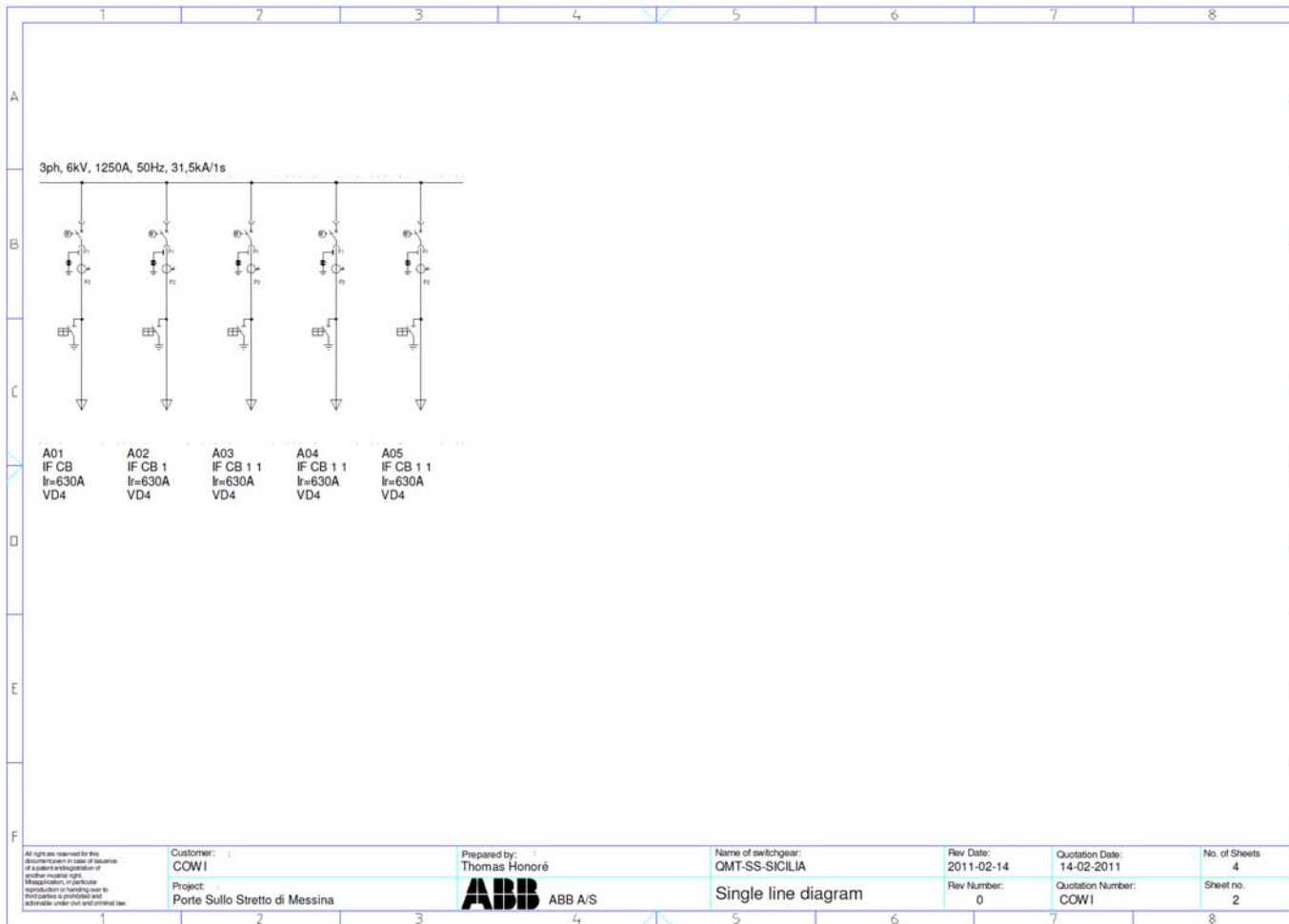
Rev	Data
F0	20/06/2011



Power Distribution Diagrams for Typical  
Medium Voltage Switchboards

*Codice documento*  
PI0107\_F0.doc

Rev	Data
F0	20/06/2011

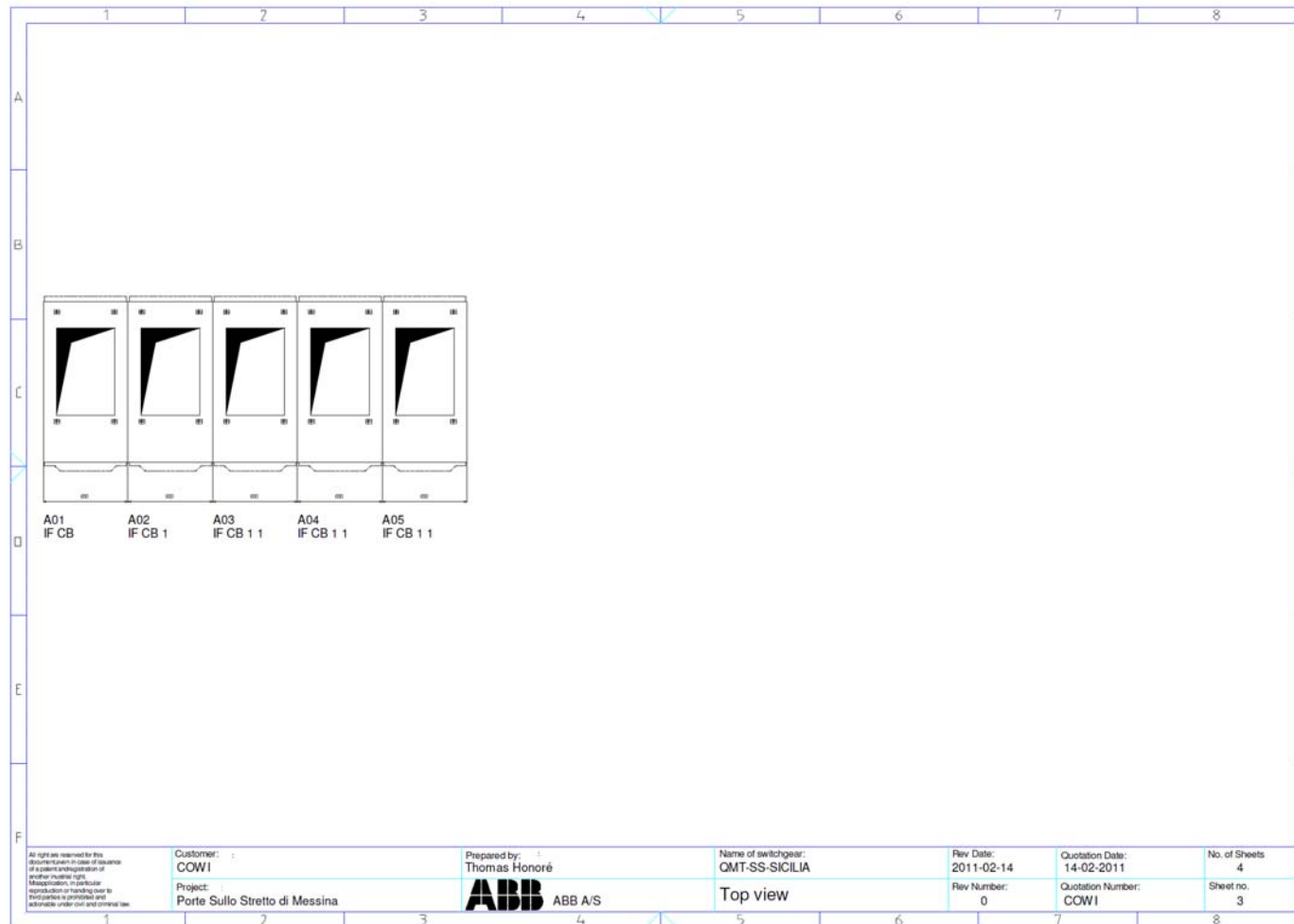




Power Distribution Diagrams for Typical  
Medium Voltage Switchboards

*Codice documento*  
PI0107\_F0.doc

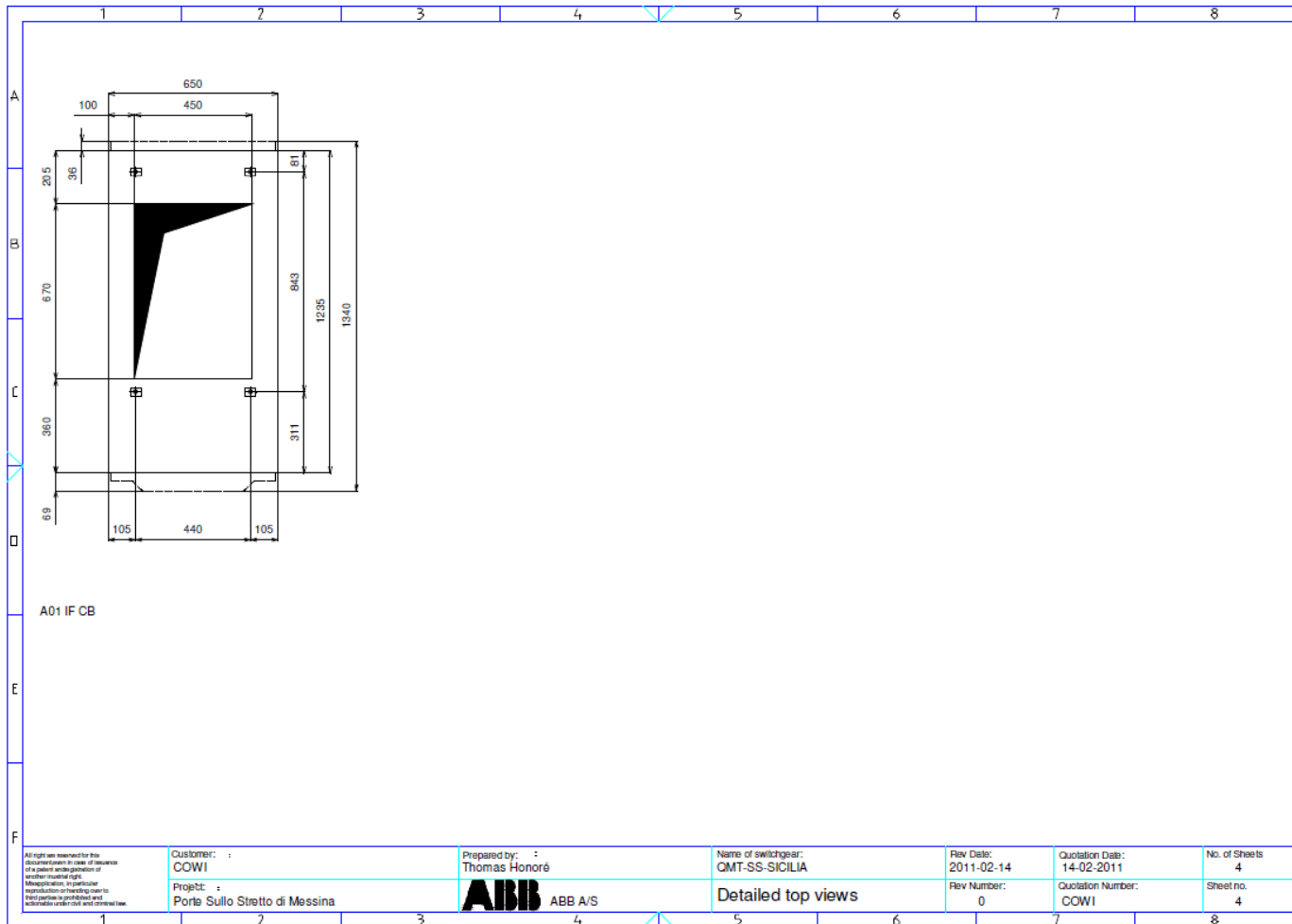
Rev	Data
F0	20/06/2011



Power Distribution Diagrams for Typical  
Medium Voltage Switchboards

*Codice documento*  
PI0107\_F0.doc

Rev	Data
F0	20/06/2011



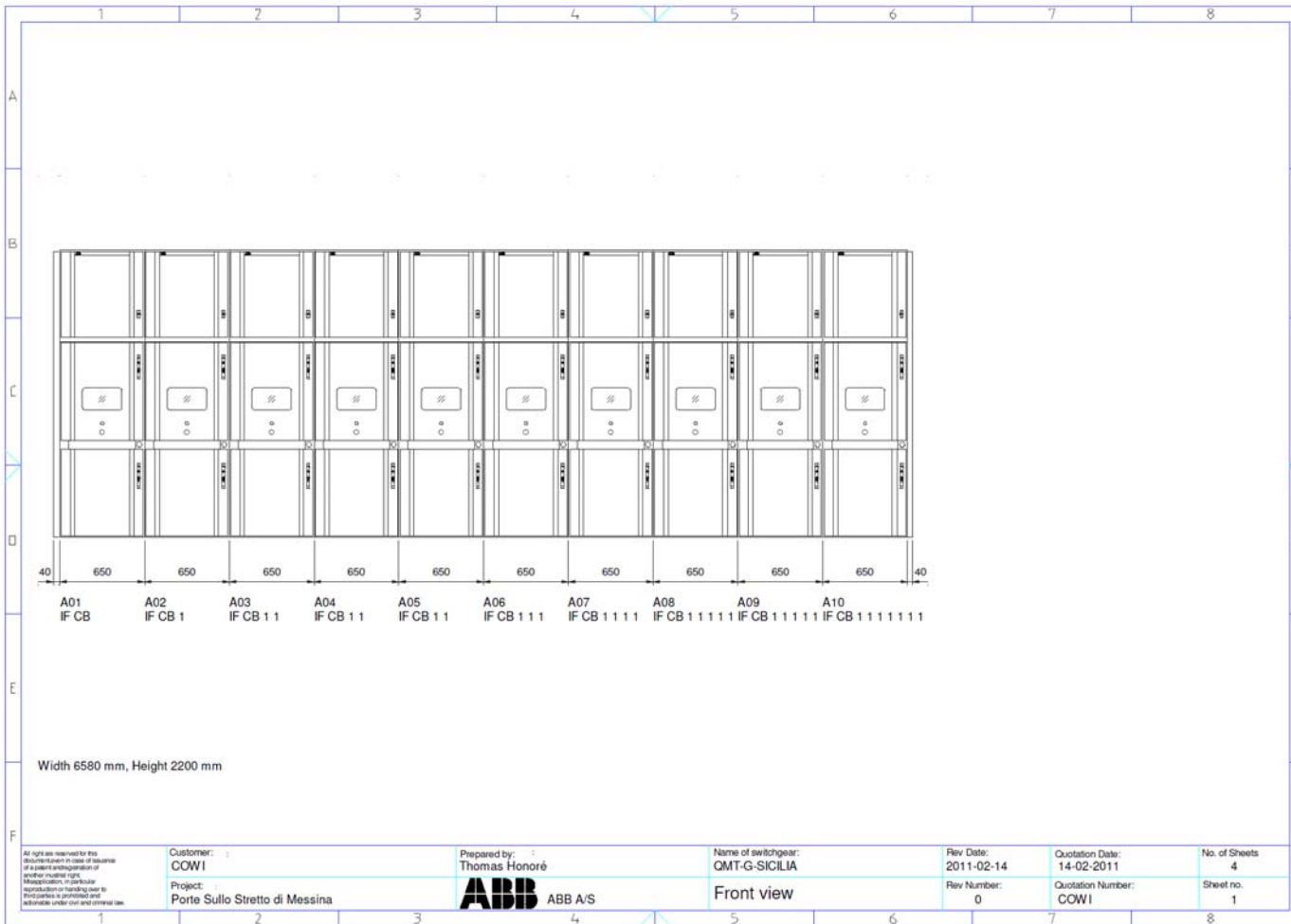


**Ponte sullo Stretto di Messina**  
**PROGETTO DEFINITIVO**

Power Distribution Diagrams for Typical  
 Medium Voltage Switchboards

*Codice documento*  
 PI0107\_F0.doc

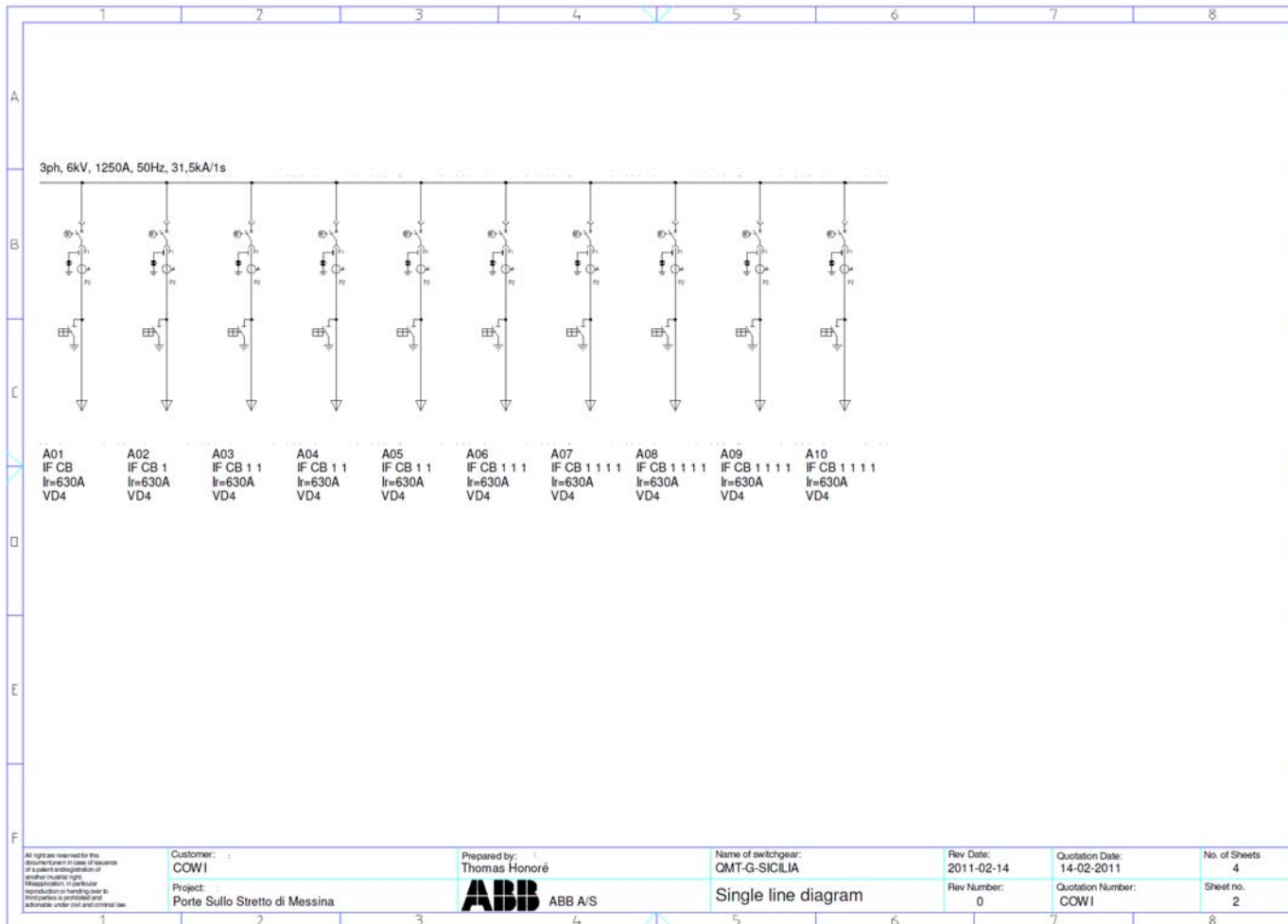
Rev	Data
F0	20/06/2011



Power Distribution Diagrams for Typical  
Medium Voltage Switchboards

*Codice documento*  
PI0107\_F0.doc

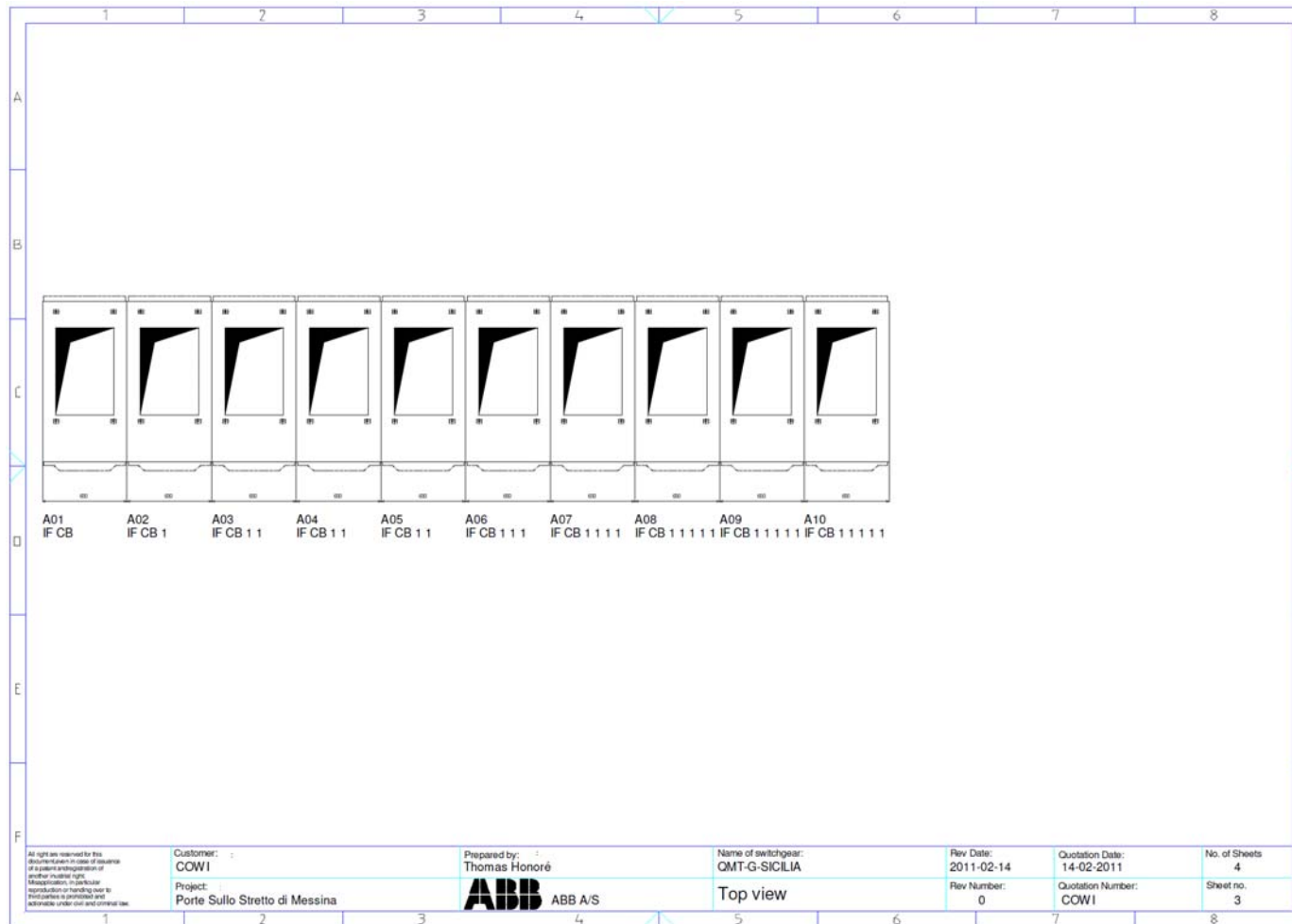
Rev	Data
F0	20/06/2011



Power Distribution Diagrams for Typical  
Medium Voltage Switchboards

*Codice documento*  
PI0107\_F0.doc

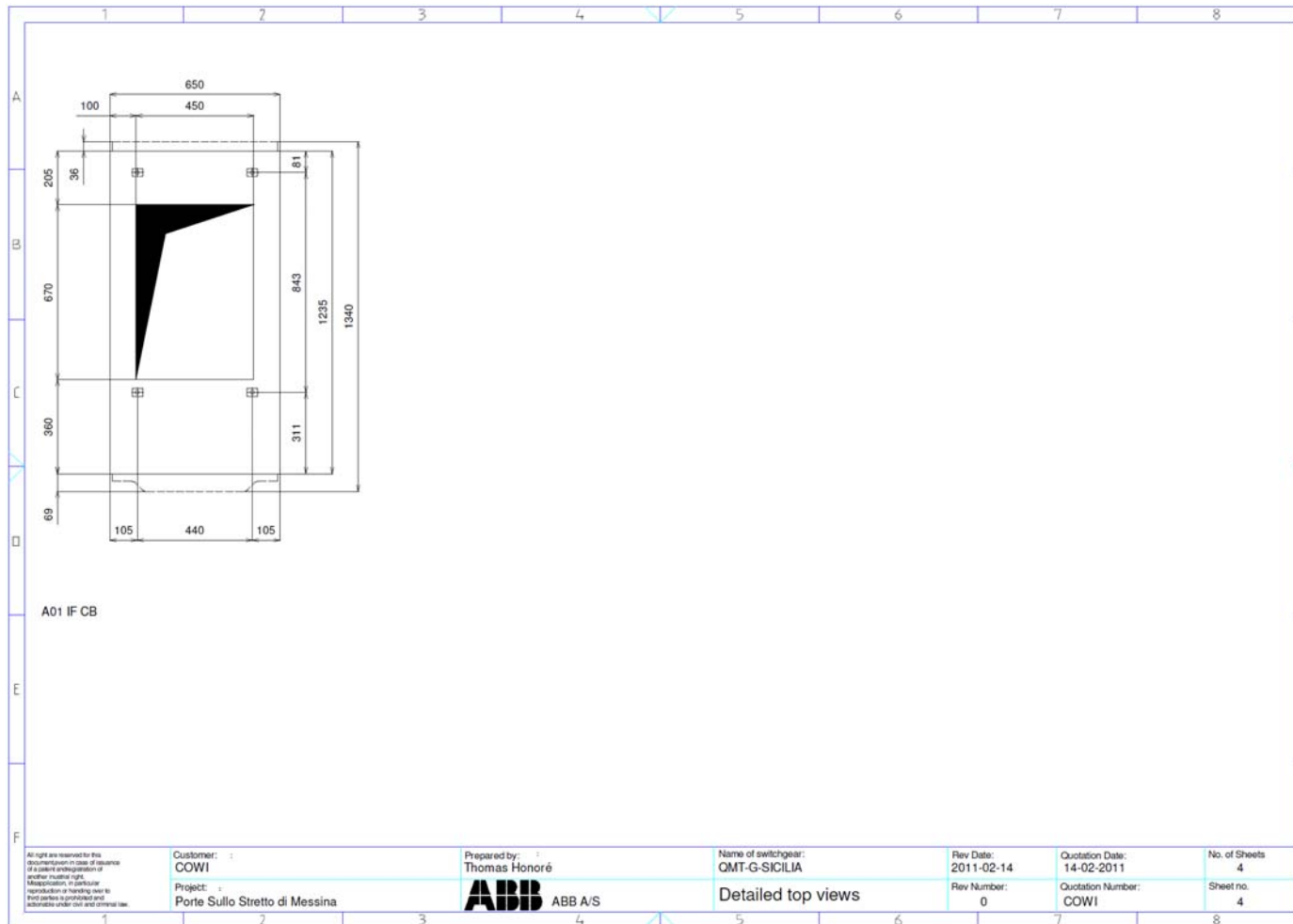
Rev	Data
F0	20/06/2011



Power Distribution Diagrams for Typical  
Medium Voltage Switchboards

*Codice documento*  
PI0107\_F0.doc

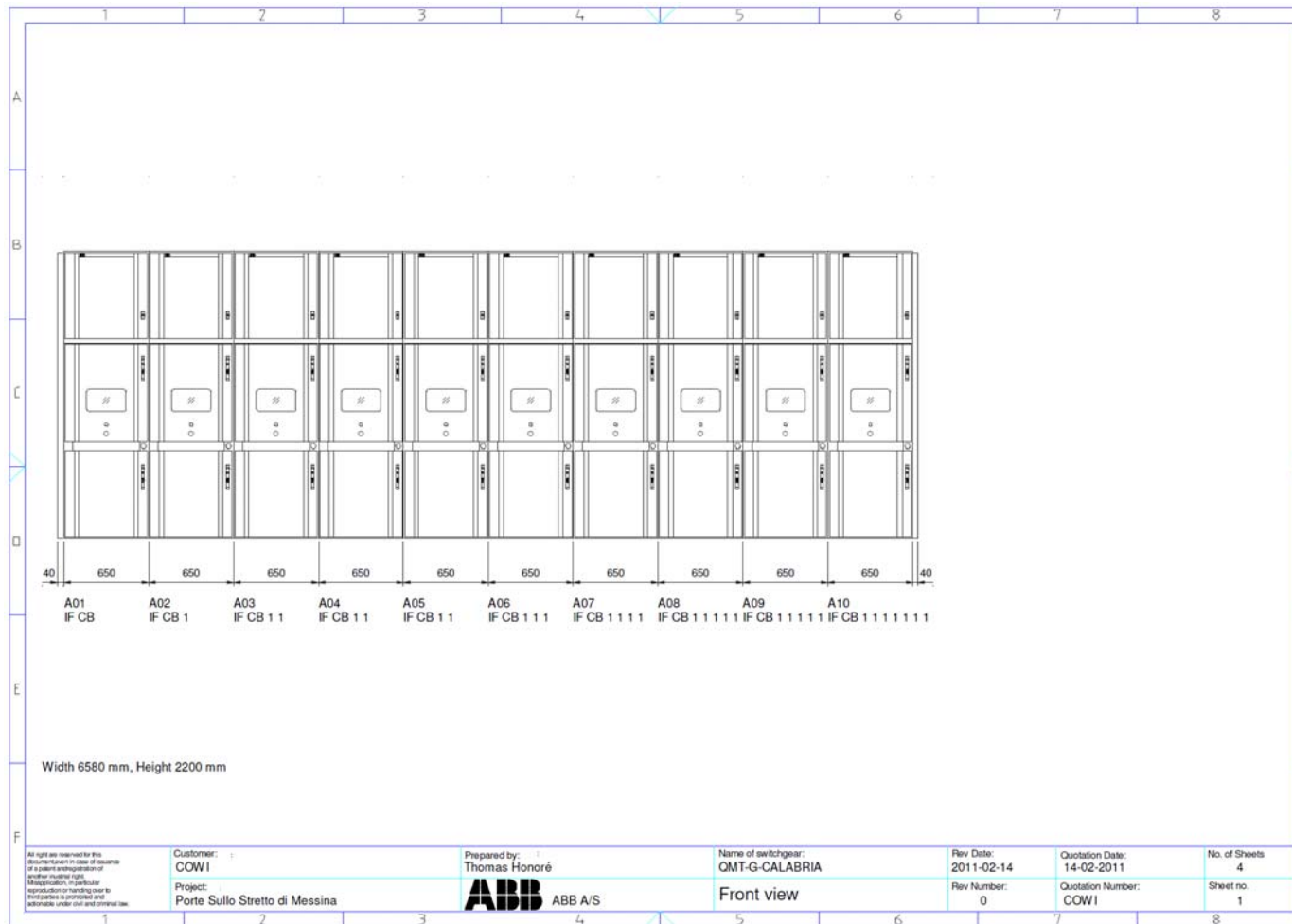
Rev	Data
F0	20/06/2011



Power Distribution Diagrams for Typical  
Medium Voltage Switchboards

*Codice documento*  
PI0107\_F0.doc

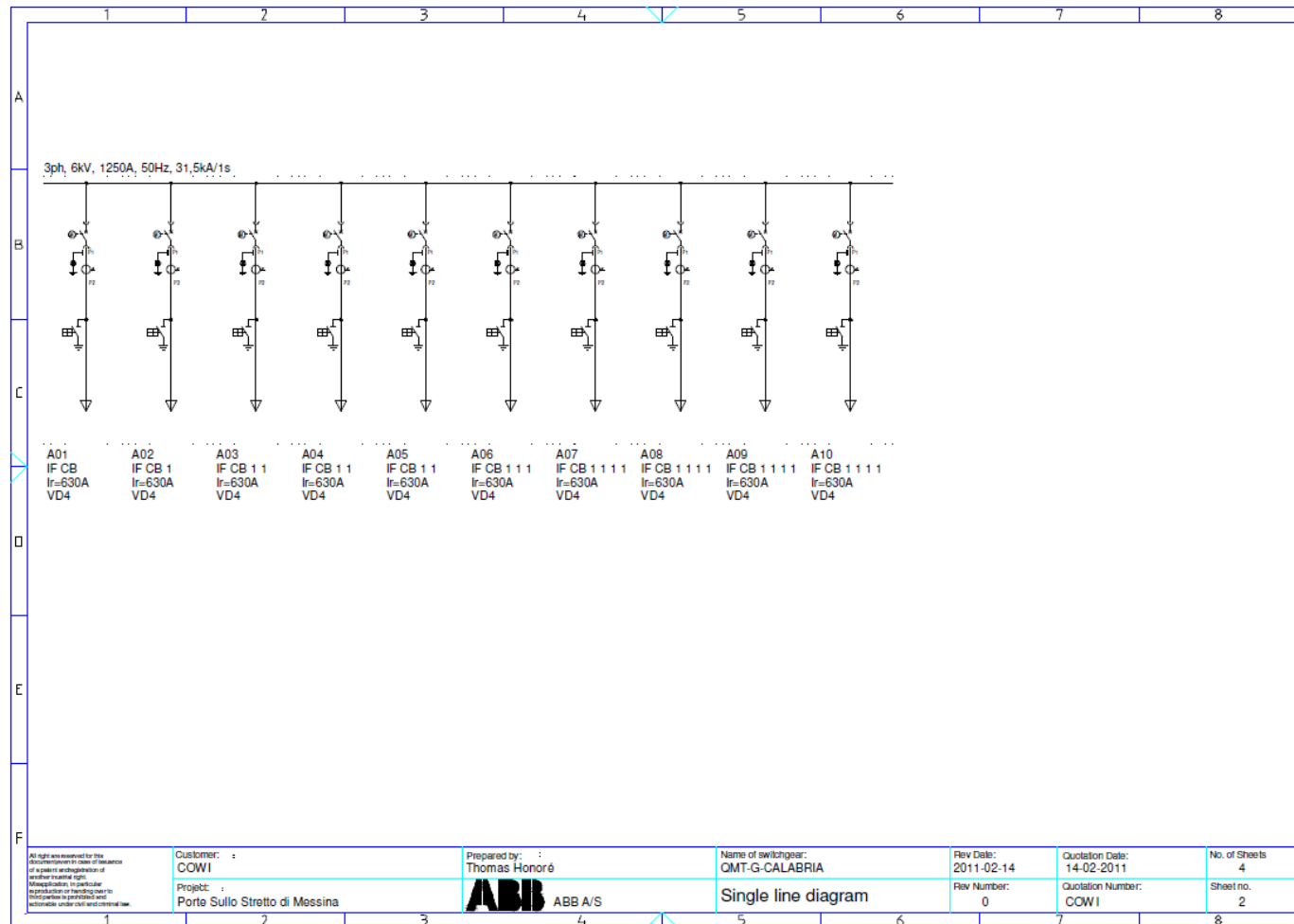
Rev	Data
F0	20/06/2011



Power Distribution Diagrams for Typical  
Medium Voltage Switchboards

*Codice documento*  
PI0107\_F0.doc

<i>Rev</i>	<i>Data</i>
F0	20/06/2011

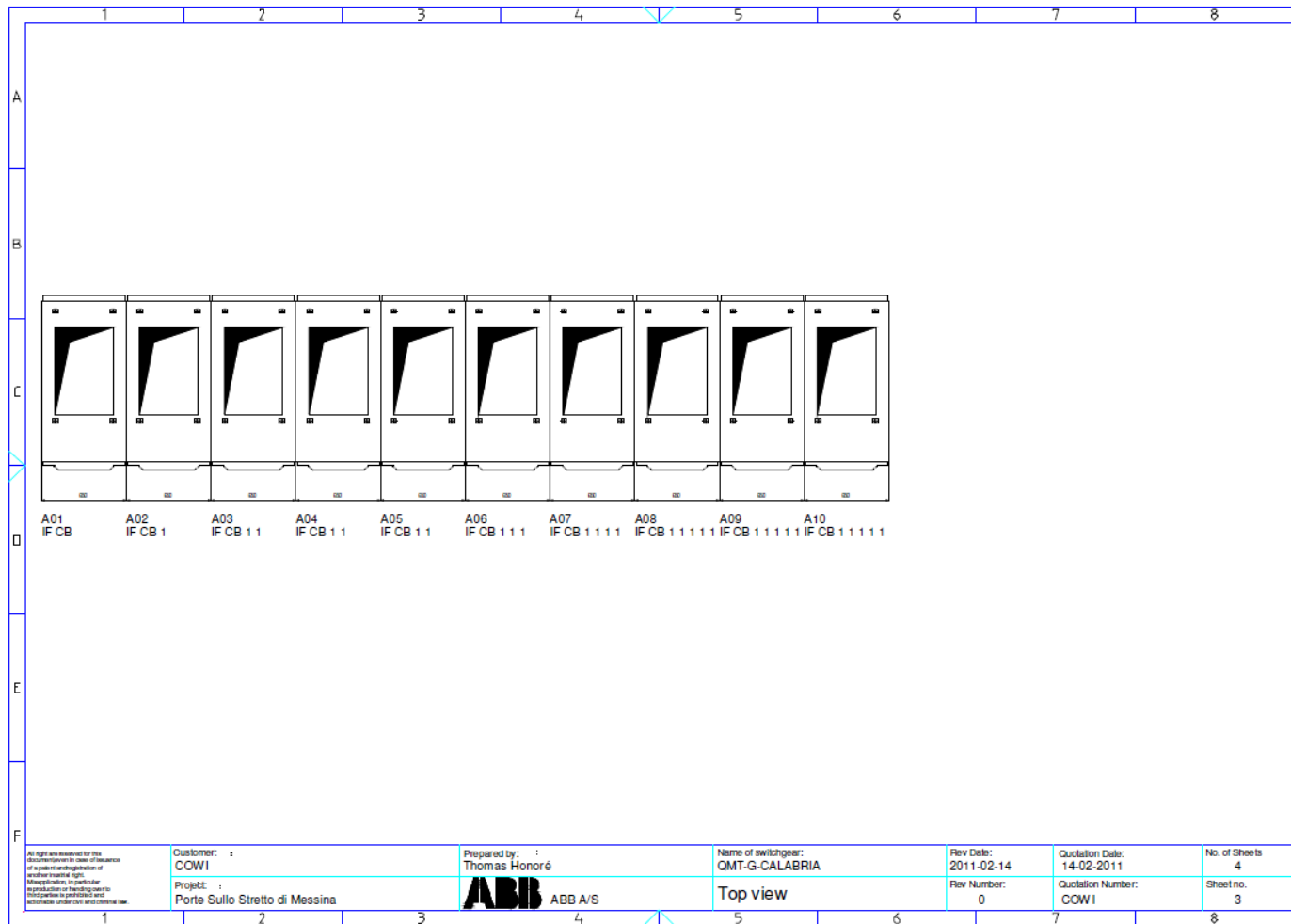




Power Distribution Diagrams for Typical  
Medium Voltage Switchboards

*Codice documento*  
PI0107\_F0.doc

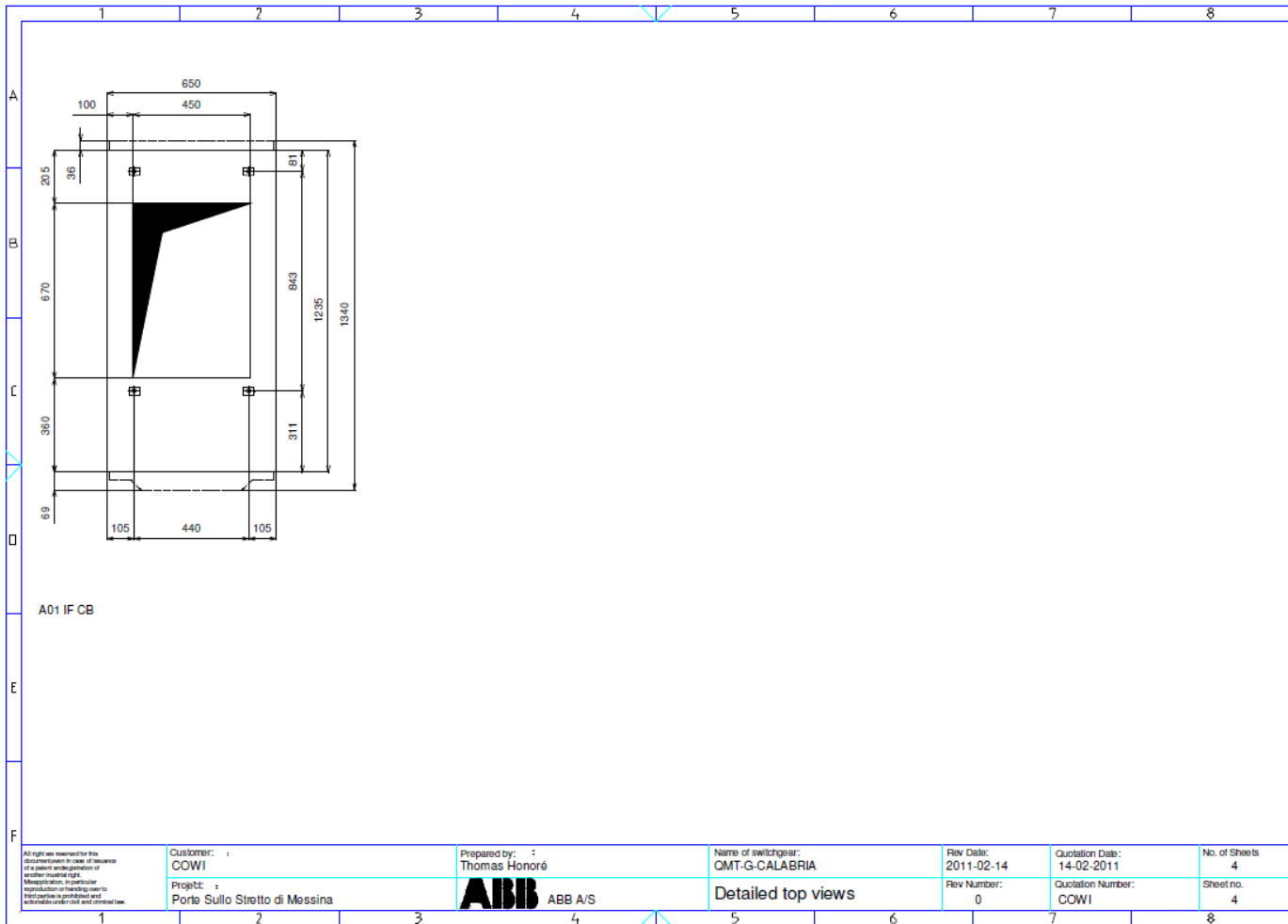
Rev	Data
F0	20/06/2011



Power Distribution Diagrams for Typical  
Medium Voltage Switchboards

*Codice documento*  
PI0107\_F0.doc

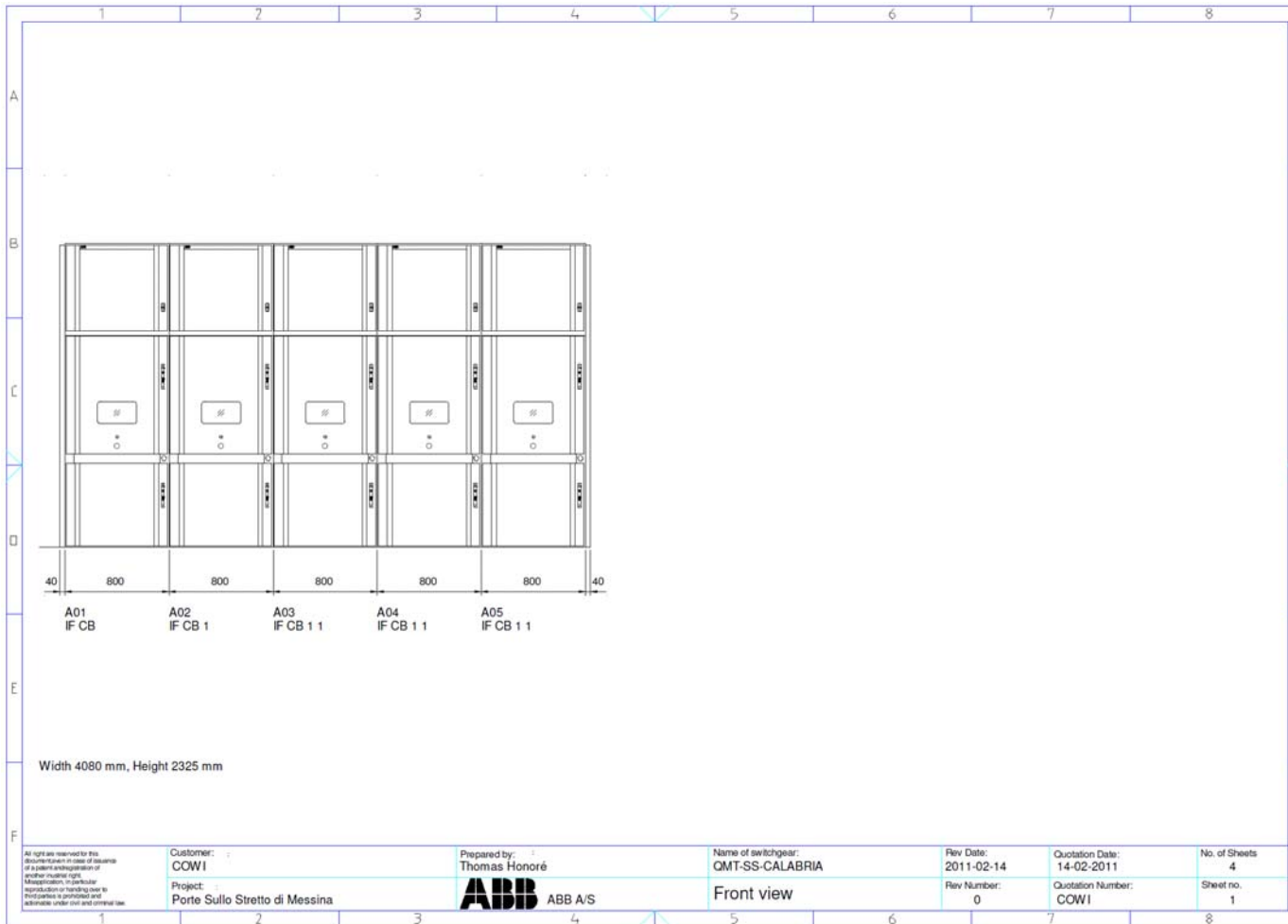
<i>Rev</i>	<i>Data</i>
F0	20/06/2011



Power Distribution Diagrams for Typical  
Medium Voltage Switchboards

*Codice documento*  
PI0107\_F0.doc

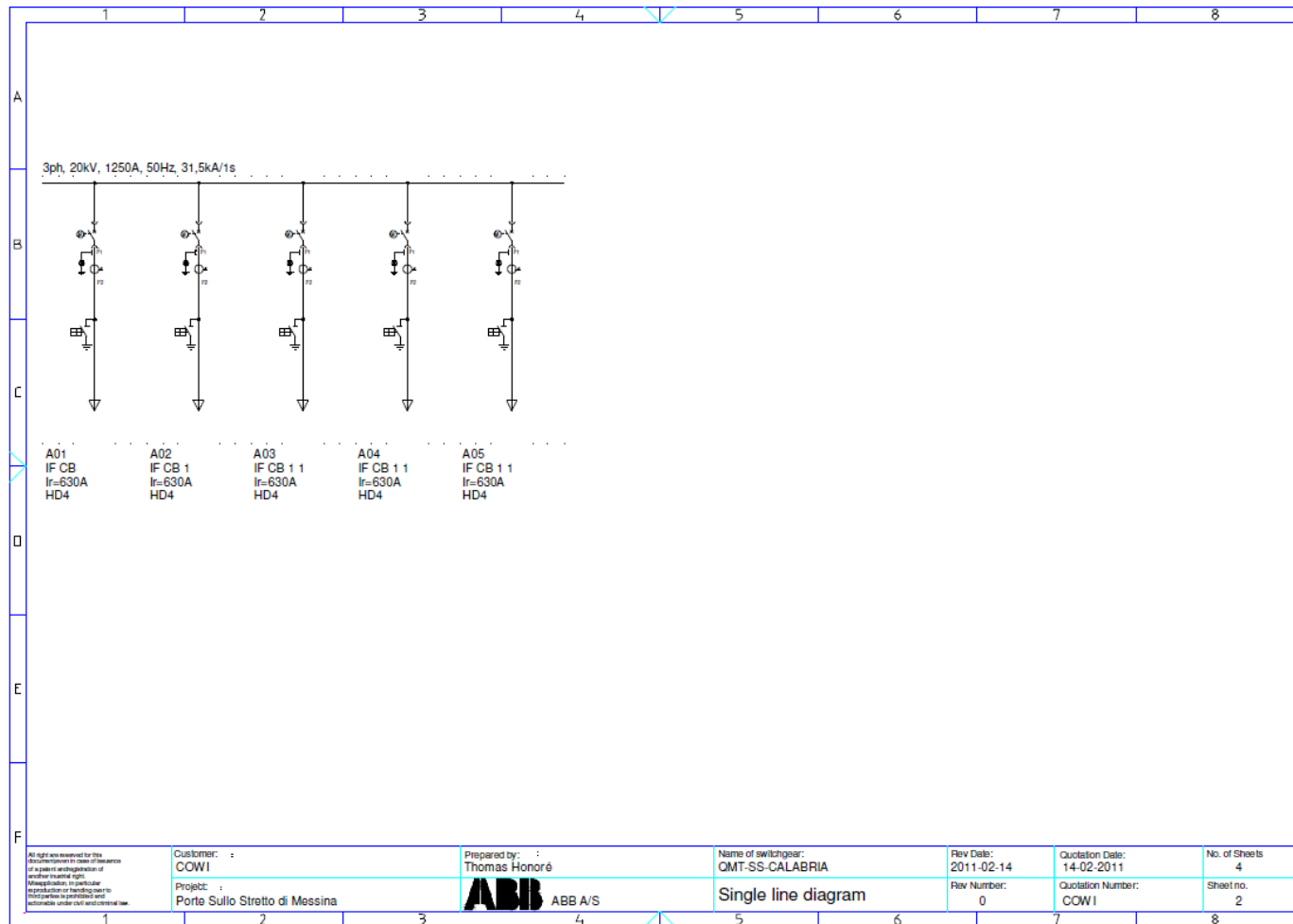
Rev	Data
F0	20/06/2011



Power Distribution Diagrams for Typical Medium Voltage Switchboards

Codice documento  
 PI0107\_F0.doc

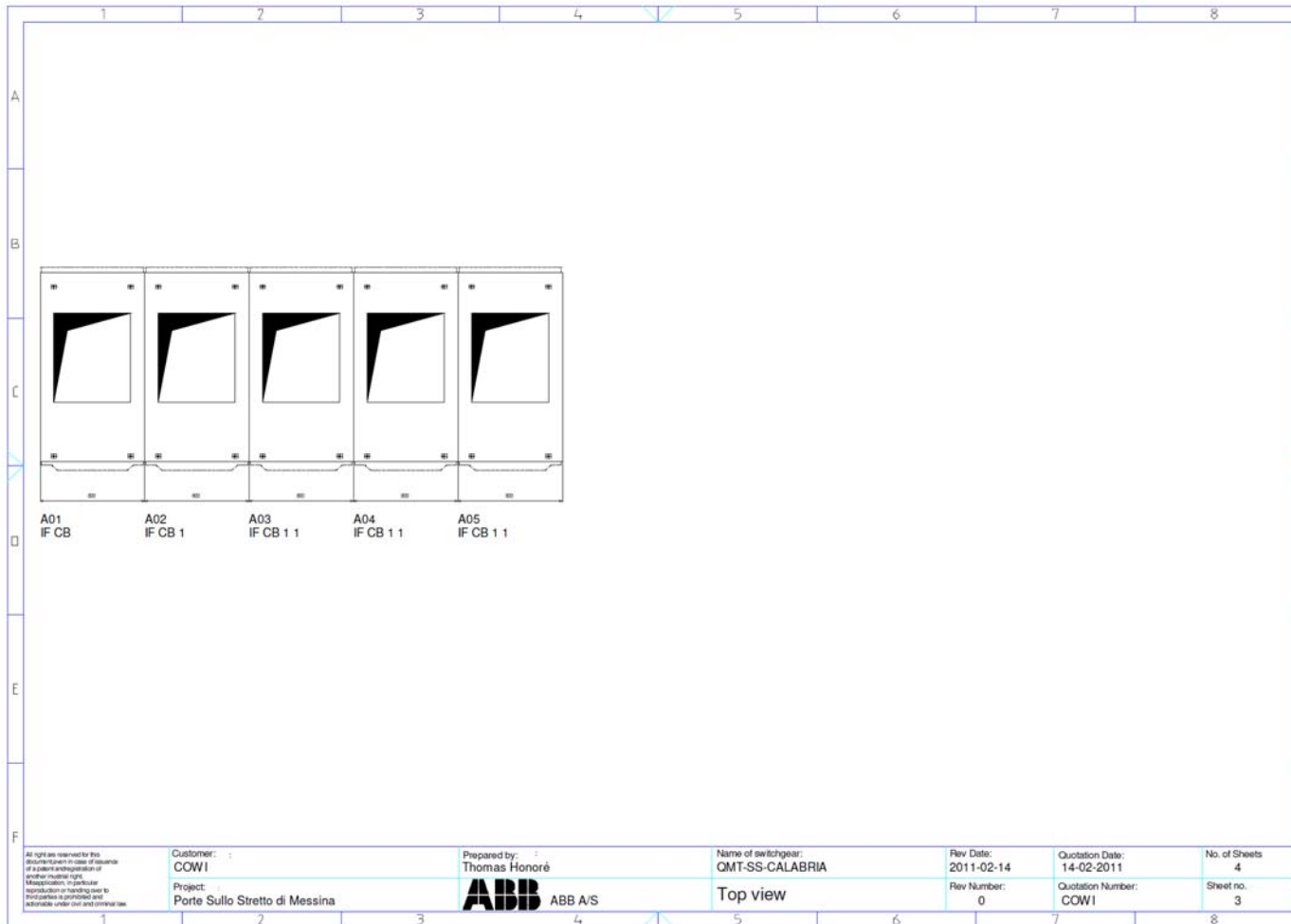
Rev	Data
F0	20/06/2011



Power Distribution Diagrams for Typical  
Medium Voltage Switchboards

*Codice documento*  
PI0107\_F0.doc

<i>Rev</i>	<i>Data</i>
F0	20/06/2011



Power Distribution Diagrams for Typical  
Medium Voltage Switchboards

*Codice documento*  
PI0107\_F0.doc

<i>Rev</i>	<i>Data</i>
F0	20/06/2011

