

UN GIUSTO DELL'ALIMENTAZIONE NORMALE (0-VOLTAGE ON ESSENTIAL AND NORMAL LOAD BUSBARS) WILL TRIP THE UNDERVOLTAGE RELAY U<K E RELE SOTTO TENSIONE U<K E DISCONNETTERA LA SBARRA DI CARICO NORMALE E SOLAMENTE I QUANDO L'ALIMENTAZIONE NORMALE SARANNO ALIMENTATI E RISERBATO U<K RELE VIENE RESETTATO ED IL BUS BREAKER CHIUSO DAL OMS E TUTTI I CARICHI ELETTRICI RALIMENTATI.

A FAILURE OF THE NORMAL POWER SUPPLY (0-VOLTAGE ON ESSENTIAL AND NORMAL LOAD BUSBARS) WILL TRIP THE UNDERVOLTAGE RELAY U<K AND DISCONNECT THE NORMAL LOAD BUSBAR AND ONLY ESSENTIAL AND NORMAL LOADS WILL BE POWERED WHEN ESSENTIAL POWER SUPPLY (GENERATORS ARE ESTABLISHED WHEN THE NORMAL POWER SUPPLY IS RESTORED) IS AVAILABLE. THE UNDERVOLTAGE RELAY WILL BE RESETTED BY THE OMS AND ALL ELECTRICAL LOADS REPOWERED.

- NOTES:**
- 1 THE SINGLE-PHASE CIRCUIT BREAKERS SHALL BE EVENLY DISTRIBUTED ON THE 3 PHASES OF THE SWITCHBOARD.
 - 2 INTERNAL SEPARATION: FORM 2 (EN60439-1)
 - 3 TERMINALS (REMOTE I/O MODULES) FOR SCADA SIGNALS SHALL BE LOCATED IN SEPARATE COMPARTMENTS.
 - 4 ACCORDING TO EN 60204-1, SAFETY OF MACHINERY-ELECTRICAL EQUIPMENT OF MACHINES - PART 1: GENERAL REQUIREMENTS, CIRCUITS SUPPLYING MACHINERY SHALL BE LOCATED IN SEPARATE COMPARTMENTS.

- LEGENDS:**
- SEE CG1000-P4ADPT-EZ00000000-02

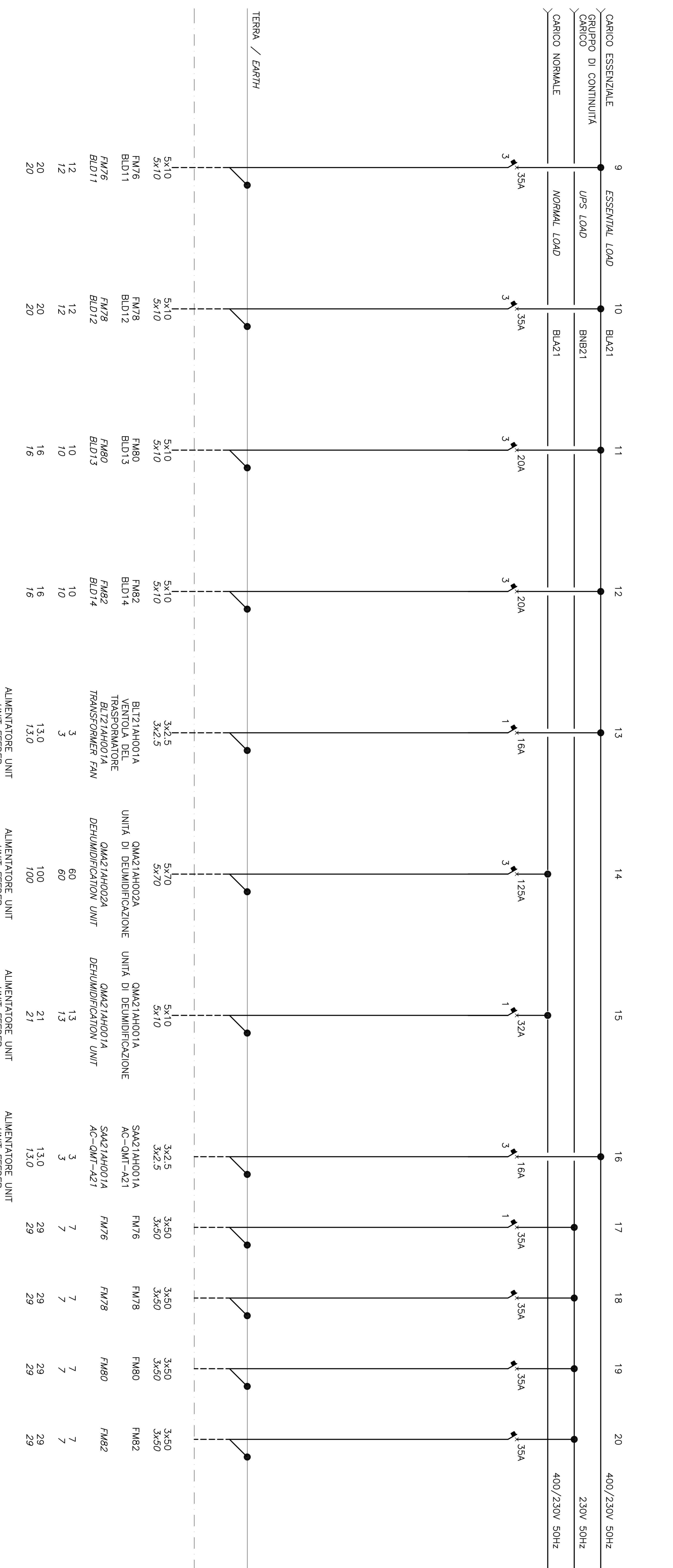
- REFERENCES:**
- CG1000-P4ADPT-EZDE00000000-01: POWER DISTRIBUTION GENERAL SINGLE LINE DIAGRAM 6kV.
 - CG1000-P4ADPT-EZDE00000000-02: POWER DISTRIBUTION GENERAL SINGLE LINE DIAGRAM 400/230V TOWER SCL.
 - CG1000-P4ADPT-EZDE00000000-03: POWER DISTRIBUTION GENERAL SINGLE LINE DIAGRAM 400/230V BRIDGE GROUP 2.
 - CG1000-P4ADPT-EZDE00000000-04: POWER DISTRIBUTION GENERAL SINGLE LINE DIAGRAM 400/230V BRIDGE GROUP 1.
 - CG1000-P4ADPT-EZDE00000000-05: POWER DISTRIBUTION GENERAL SINGLE LINE DIAGRAM 400/230V BRIDGE GROUP 3.
 - CG1000-P4ADPT-EZDE00000000-06: POWER DISTRIBUTION GENERAL SINGLE LINE DIAGRAM 400/230V BRIDGE GROUP 4.
 - CG1000-P4ADPT-EZDE00000000-07: POWER DISTRIBUTION GENERAL SINGLE LINE DIAGRAM 400/230V TOWER CALABRIA.
 - CG1000-P4ADPT-EZDE00000000-09: POWER DISTRIBUTION GENERAL SINGLE LINE DIAGRAM 400/230V FACTOR BLOCK.
 - CG1000-P4ADPT-EZDE00000000-06: SETTING OF PROTECTION.
 - CG1000-P4ADPT-M4G00000000-01: RELAZIONE DI CALCOLO.
 - CG1000-P2SDPT-M2C30000000-06: SPECIFICHE PROGETTUALI - LAVORI MECCANICI ED ELETTRICI

NOTE GENERALI

- NOTE:**
- 1 GLI INTERRUTTORI DEI CIRCUITI A FASE SINGOLA DEVONO ESSERE DISTRIBUITI A INTERVALLI REGOLARI SULLE 3 FASI DEL PANNELLO DI CONTROLLO.
 - 2 SEPARAZIONE INTERNA: FORM 2 (EN60439-1)
 - 3 I TERMINALI (MODULI I/O REMOTI) PER I SEGNALE SCADA DEVONO ESSERE POSTI IN COMPARTIMENTI SEPARATI.
 - 4 CONFORMEMENTE ALLA NORMATIVA EN 60204-1, SAFETY OF MACHINERY-ELECTRICAL EQUIPMENT OF MACHINES - PART 1: GENERAL REQUIREMENT, I CIRCUIT CHE SERVONO MACCHINE DEVONO ESSERE POSTI IN COMPARTIMENTI SEPARATI.

- LEGENDA:**
- VEDI CG1000-P4ADPT-EZ00000000-01

- ELABORATI DI RIFERIMENTO:**
- CG1000-P4ADPT-EZDE00000000-01: SCHEMA GENERALE UNIFILARE MT 6kV.
 - CG1000-P4ADPT-EZDE00000000-02: SCHEMA GENERALE UNIFILARE BT 400/230V TORRE SICILIA.
 - CG1000-P4ADPT-EZDE00000000-03: SCHEMA GENERALE UNIFILARE BT 400/230V PONTE SICILIA.
 - CG1000-P4ADPT-EZDE00000000-04: SCHEMA GENERALE UNIFILARE BT 400/230V PONTE GRUPPO 1.
 - CG1000-P4ADPT-EZDE00000000-05: SCHEMA GENERALE UNIFILARE BT 400/230V PONTE GRUPPO 2.
 - CG1000-P4ADPT-EZDE00000000-06: SCHEMA GENERALE UNIFILARE BT 400/230V PONTE GRUPPO 3.
 - CG1000-P4ADPT-EZDE00000000-07: SCHEMA GENERALE UNIFILARE BT 400/230V TORRE CALABRIA.
 - CG1000-P4ADPT-EZDE00000000-09: SCHEMA GENERALE UNIFILARE BT 400/230V.
 - CG1000-P4ADPT-EZDE00000000-06: SETTING OF PROTECTION.
 - CG1000-P4ADPT-M4G00000000-01: RELAZIONE DI CALCOLO.
 - CG1000-P2SDPT-M2C30000000-06: SPECIFICHE PROGETTUALI - LAVORI MECCANICI ED ELETTRICI



Stretto di Messina

EUROLINK S.p.A.

OPERA D'ATTRAVERSAMENTO

PIU30.FO

PROGETTO DEFINITIVO

NOTE:

QUESTO ELABORATO GARANTO VA LETTO INSIEME A:
 THIS DRAWING TO BE READ IN CONJUNCTION WITH:
 CG1000-P4ADPT-EZDE00000000-43

LEGENDA:

VEDI CG1000-P4ADPT-EZ00000000-01

ELABORATI DI RIFERIMENTO:

- CG1000-P4ADPT-EZDE00000000-01: SCHEMA GENERALE UNIFILARE MT 6kV.
- CG1000-P4ADPT-EZDE00000000-02: SCHEMA GENERALE UNIFILARE BT 400/230V TORRE SICILIA.
- CG1000-P4ADPT-EZDE00000000-03: SCHEMA GENERALE UNIFILARE BT 400/230V PONTE SICILIA.
- CG1000-P4ADPT-EZDE00000000-04: SCHEMA GENERALE UNIFILARE BT 400/230V PONTE GRUPPO 1.
- CG1000-P4ADPT-EZDE00000000-05: SCHEMA GENERALE UNIFILARE BT 400/230V PONTE GRUPPO 2.
- CG1000-P4ADPT-EZDE00000000-06: SCHEMA GENERALE UNIFILARE BT 400/230V PONTE GRUPPO 3.
- CG1000-P4ADPT-EZDE00000000-07: SCHEMA GENERALE UNIFILARE BT 400/230V TORRE CALABRIA.
- CG1000-P4ADPT-EZDE00000000-09: SCHEMA GENERALE UNIFILARE BT 400/230V.
- CG1000-P4ADPT-EZDE00000000-06: SETTING OF PROTECTION.
- CG1000-P4ADPT-M4G00000000-01: RELAZIONE DI CALCOLO.
- CG1000-P2SDPT-M2C30000000-06: SPECIFICHE PROGETTUALI - LAVORI MECCANICI ED ELETTRICI