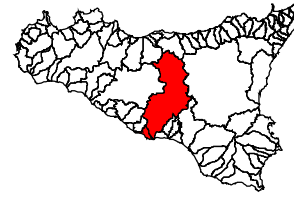




### Piano Stralcio di Bacino per l'Assetto Idrogeologico (P.A.I.)

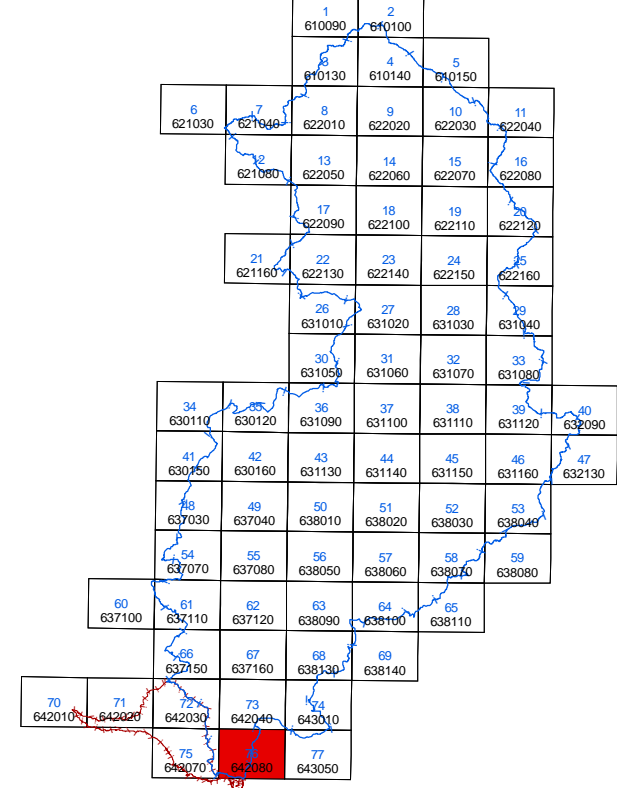
(ART. 1 D.L. 180/98 CONVERTITO CON MODIFICHE CON LA L.267/99 e ss. mm. i.)

Bacino Idrografico del F. Imera Meridionale (072)  
Area territoriale tra il Bacino Idrografico del F. Palma e il  
Bacino Idrografico del F. Imera Meridionale (071)



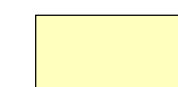



### CARTA DEL RISCHIO IDRAULICO PER FENOMENI DI ESONDAZIONE N° 76

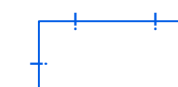


COMUNE DI LICATA  
Scala 1:10.000



Anno 2005

#### LEGENDA

-  R1 Rischio moderato
-  R2 Rischio medio
-  R3 Rischio elevato
-  R4 Rischio molto elevato

-  Limite bacino idrografico
-  Limite dell'area intermedia
-  Limite comunale

