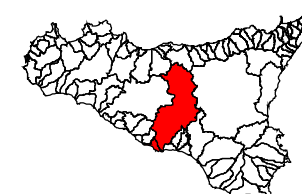




Piano Stralcio di Bacino per l'Assetto Idrogeologico (P.A.I.)

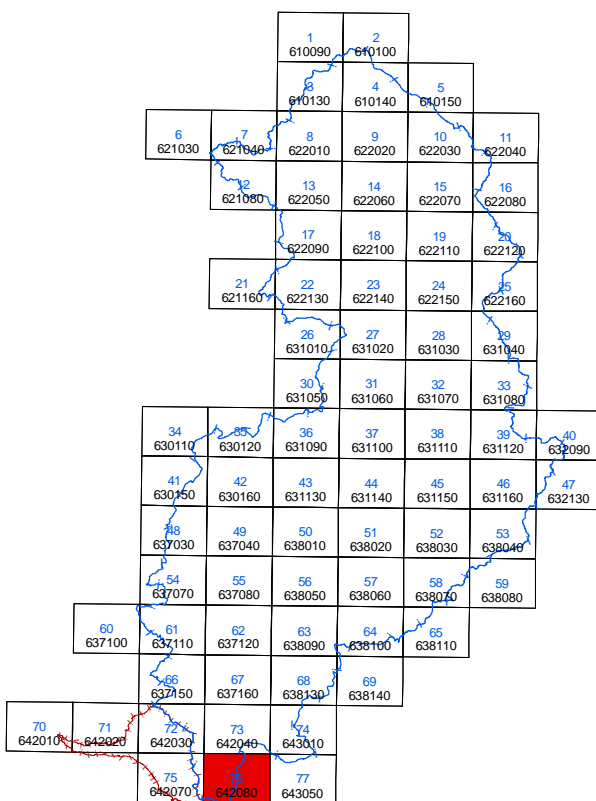
(ART.1 D.L. 180/98 CONVERTITO CON MODIFICHE CON LA L.267/98 e ss. mm. ll.)

Bacino Idrografico del F. Imera Meridionale (072)
Area territoriale tra il Bacino Idrografico del F. Palma e il
Bacino Idrografico del F. Imera Meridionale (071)



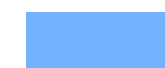



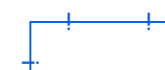


CARTA DELLA PERICOLOSITA' IDRAULICA PER FENOMENI DI ESONDAZIONE N° 76

COMUNE DI LICATA
Scala 1:10.000



Anno 2005

LEGENDA

-  P1 Pericolosità moderata
-  P2 Pericolosità media
-  P3 Pericolosità elevata
-  Sito di attenzione
-  Limite bacino idrografico
-  Limite dell'area intermedia
-  Limite comunale

