

NOTE GENERALI

NOTE:
DIMENSIONI: TUTTE LE DIMENSIONI SONO IN MILLIMETRI, SALVO OVE DIVERSAMENTE INDICATO.

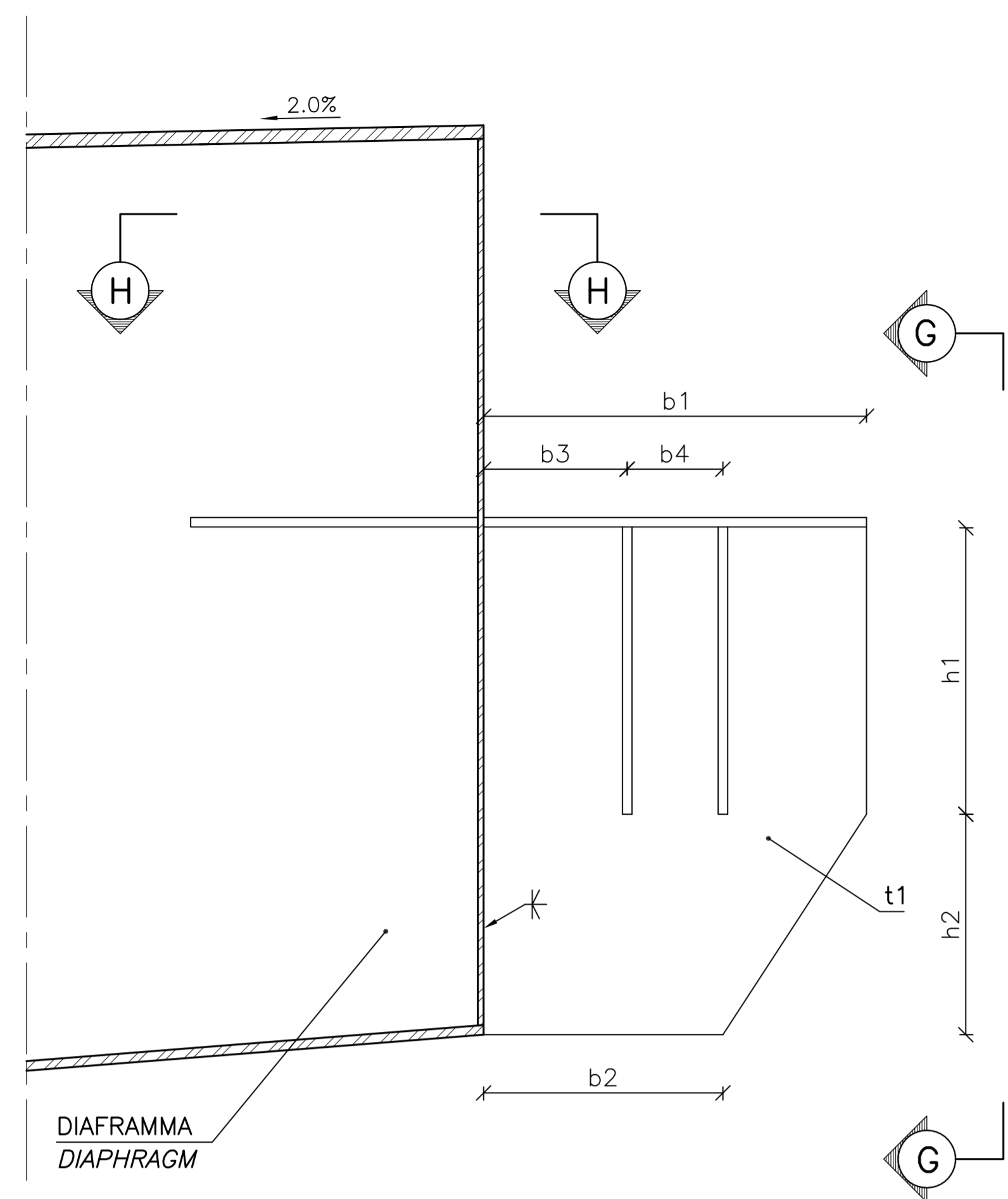
ELABORATI DI RIFERIMENTO:
CG1000-PSXDPSV-0000000000-01 NOTE GENERALI

NOTES:
DIMENSIONS: DIMENSIONS ARE IN MILLIMETRES UNLESS OTHERWISE NOTED.

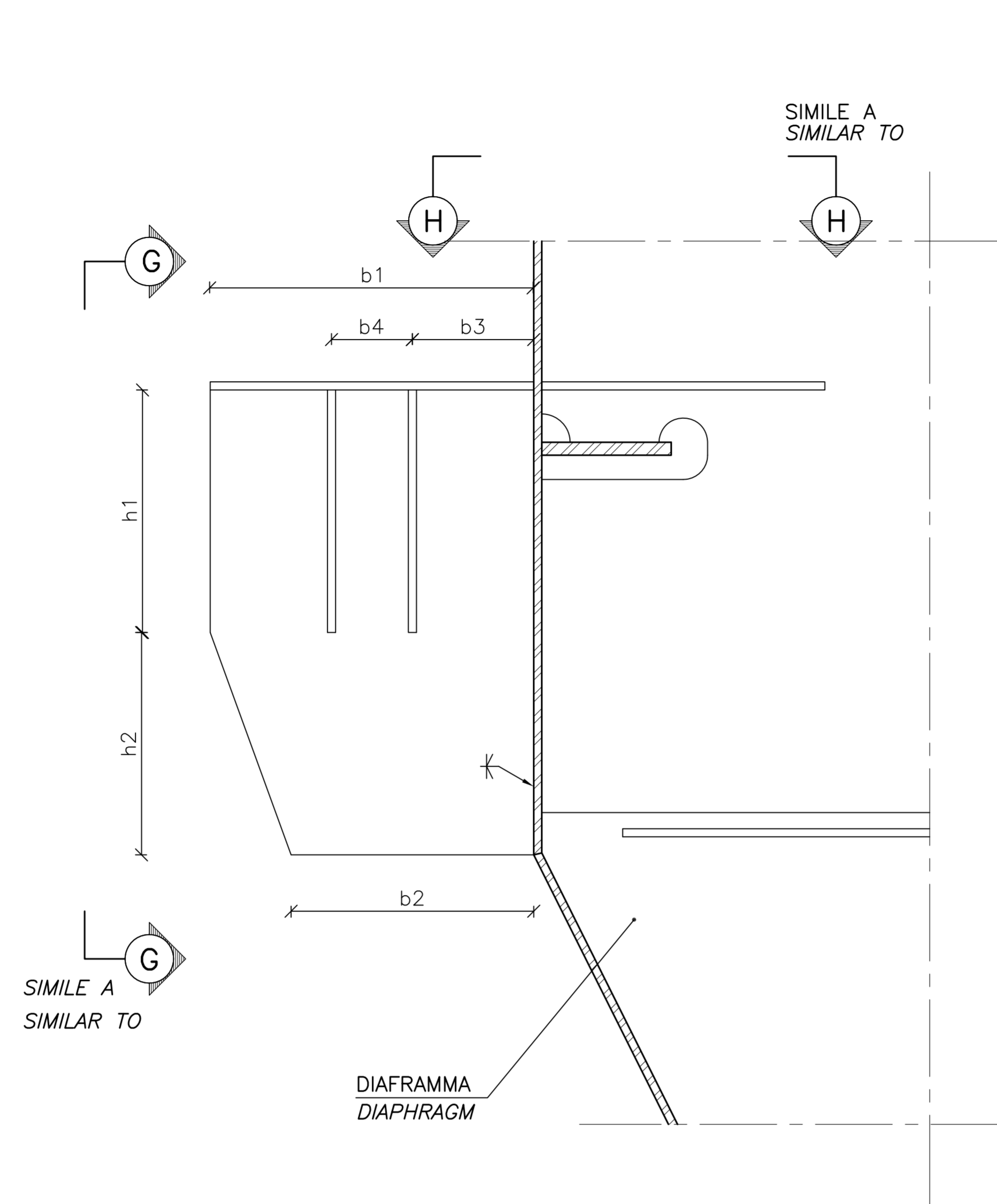
REFERENCES:
CG1000-PSXDPSV-0000000000-02 GENERAL NOTES

QUESTO ELABORATO GRAFICO VA LETTO INSIEME A:
THIS DRAWING TO BE READ IN CONJUNCTION WITH:
CG1000-PSXDPSV-1300000000-01
CG1000-PSXDPSV-1300000000-02
CG1000-PWXDPSV-1300000000-04

DETTAGLIO 4, MENSOLA SULL'IMPALCATO AL DIAFRAMMA STRADALE
SCALE 1:5
DETAIL 4, CONSOLE AT DIAPHRAGM, ROADWAY
SCALE 1:5



DETTAGLIO 6, MENSOLA SULL'IMPALCATO AL DIAFRAMMA FERROVIARIO
SCALE 1:5
DETAIL 6, CONSOLE AT DIAPHRAGM, RAILWAY
SCALE 1:5



SEZIONE G-G
SCALE 1:5
SECTION G-G
SCALE 1:5

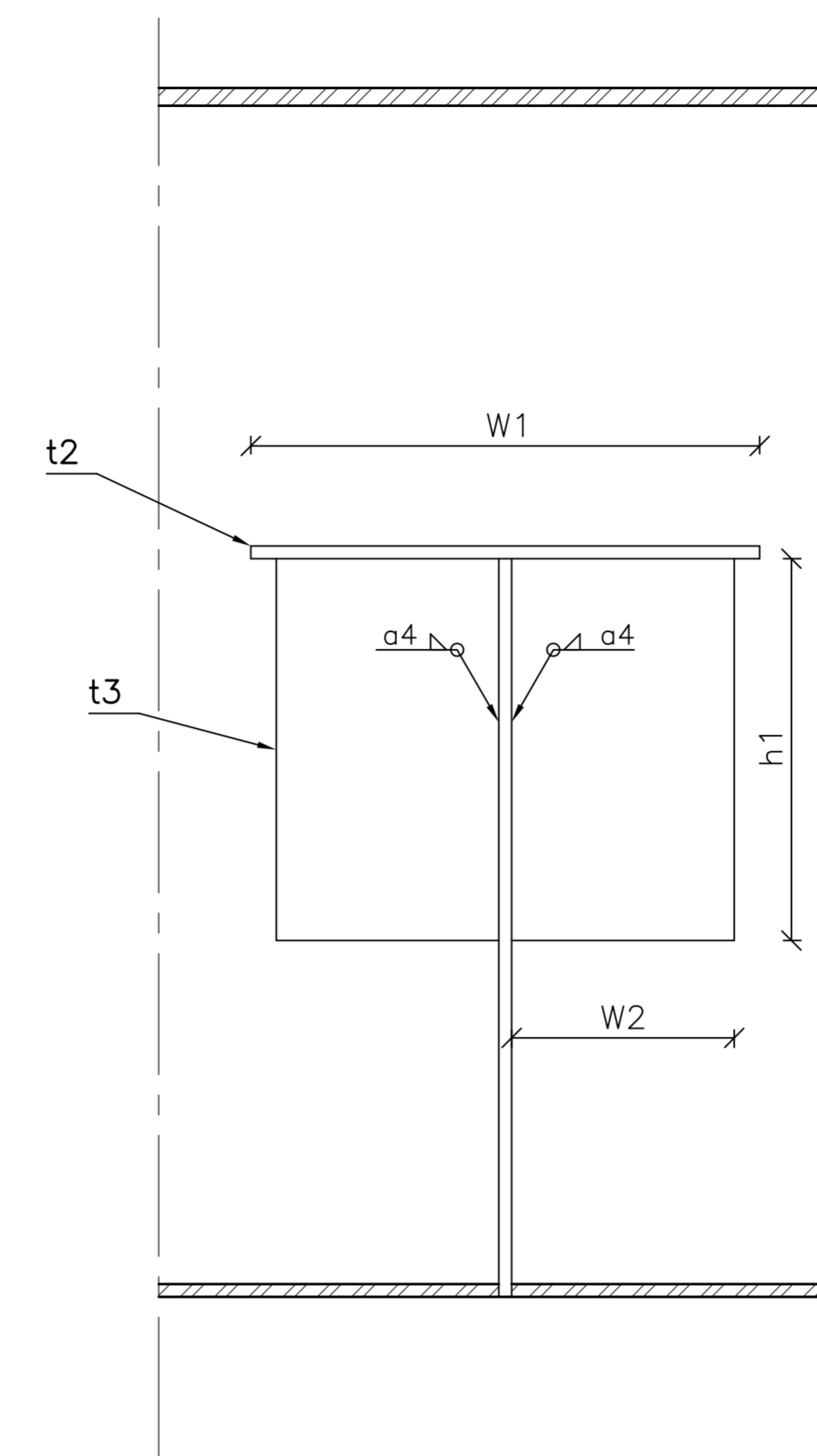
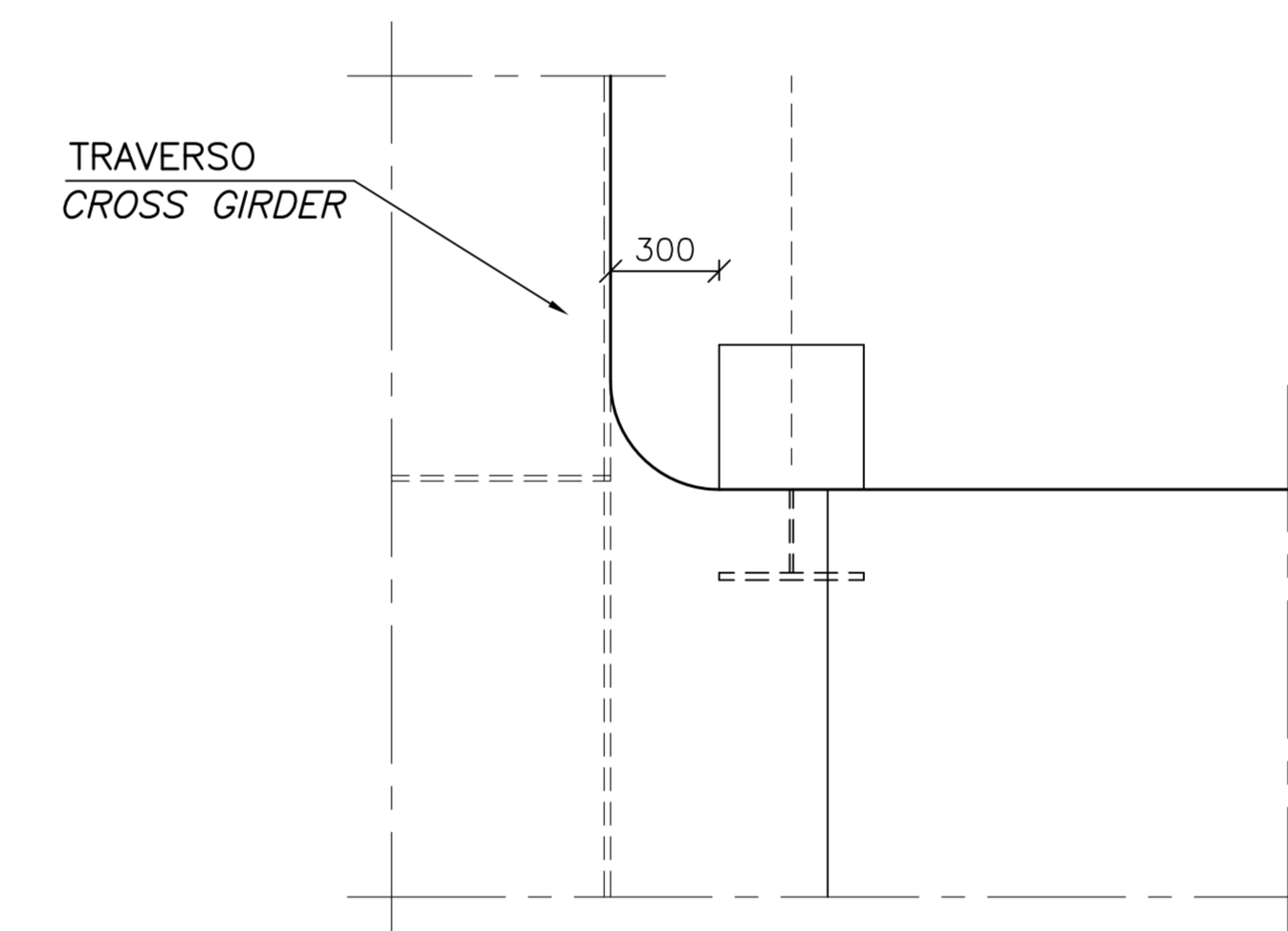


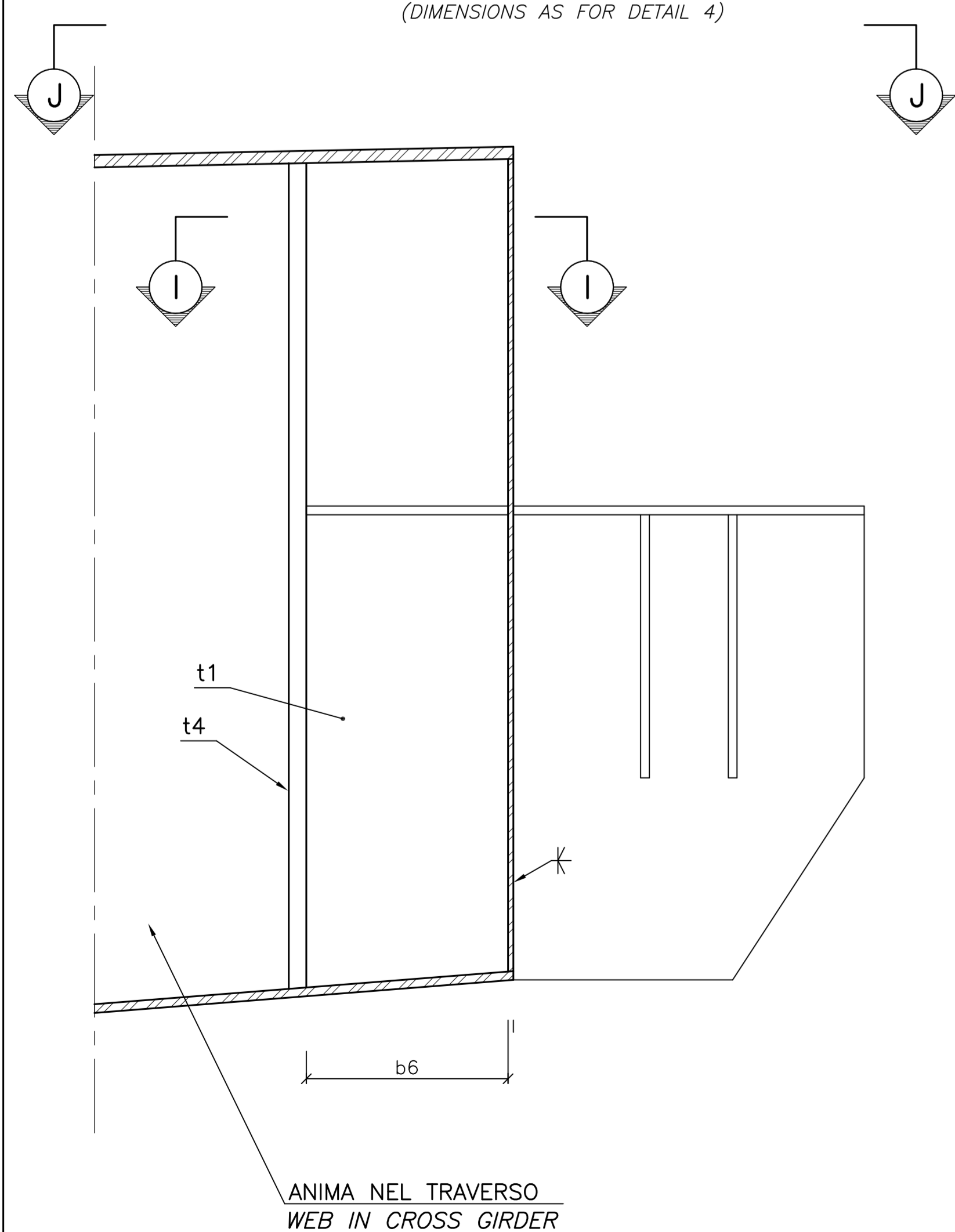
TABELLA 1
DIMENSIONI MENSOLE, SPESSORE LAMIERE E CLASSE ACCIAIO
TABLE 1
CONSOLE DIMENSIONS, THICKNESS AND STEEL GRADE

| CLASSE ACCIAIO STEEL GRADE | PIAZZOLA SERVICE AREA | | BY PASS CROSS OVER | |
|-------------------------------|--------------------------|------------------------|-----------------------|------------------------|
| | STRADALE ROADWAY | FERROVIARIO RAILWAY | STRADALE ROADWAY | FERROVIARIO RAILWAY |
| S355 | S355 | S355 | S460 | S460 |
| h1 | 300 | 300 | 200 | 300 |
| h2 | 230 | 275 | 180 | 365 |
| b1 | 400 | 400 | 500 | 500 |
| b2 | 250 | 300 | 350 | 300 |
| b3 | 150 | 150 | 175 | 175 |
| b4 | 100 | 100 | 150 | 150 |
| b5 | 300 | 300 | 400 | 400 |
| b6 | 230 | 230 | 230 | 230 |
| b7 | 350 | 350 | 350 | 350 |
| W1 | 400 | 400 | 400 | 400 |
| W2 | 175 | 175 | 175 | 175 |
| t1 | 10 | 10 | 14 | 14 |
| t2 | 10 | 10 | 14 | 14 |
| t3 | 10 | 10 | 10 | 10 |
| t4 | 20 | 20 | 25 | 25 |

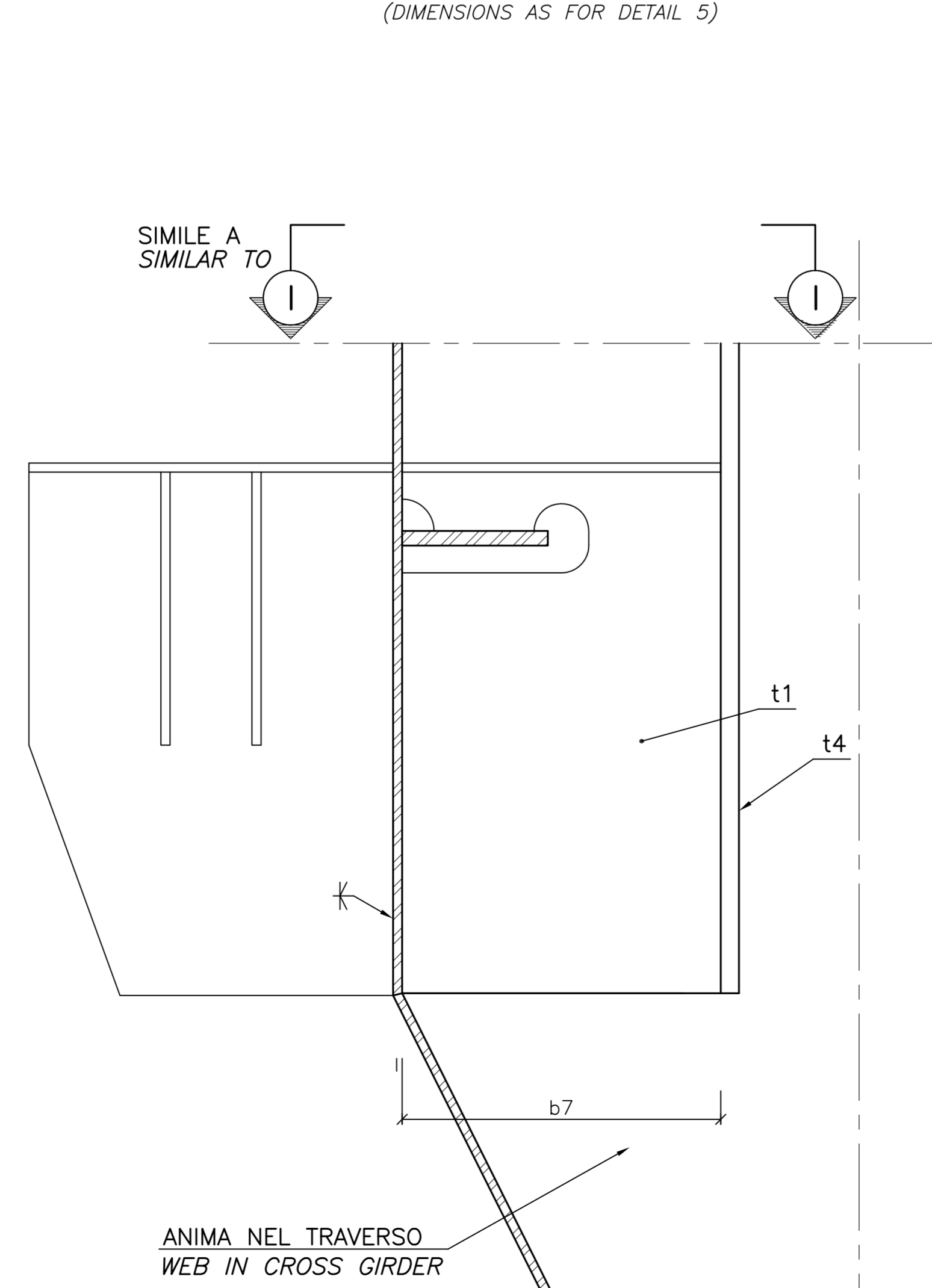
SEZIONE J-J (TYP)
SCALE 1:20
SECTION J-J (TYP)
SCALE 1:20



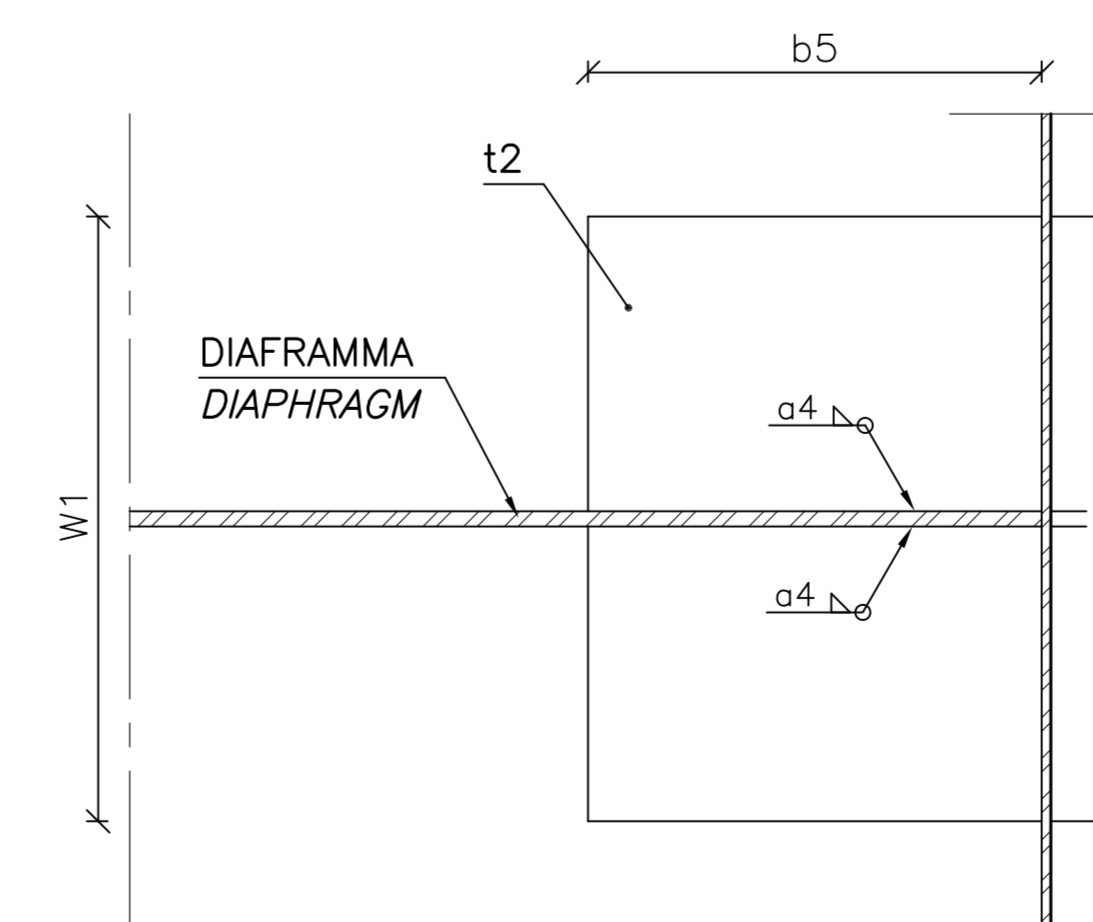
DETTAGLIO 5, MENSOLA SULL'IMPALCATO A TRAVERSO, STRADALE
SCALE 1:5
(DIMENSIONI COME PER IL DETTAGLIO 4)
DETAIL 5, CONSOLE AT CROSS GIRDER, ROADWAY
SCALE 1:5
(DIMENSIONS AS FOR DETAIL 4)



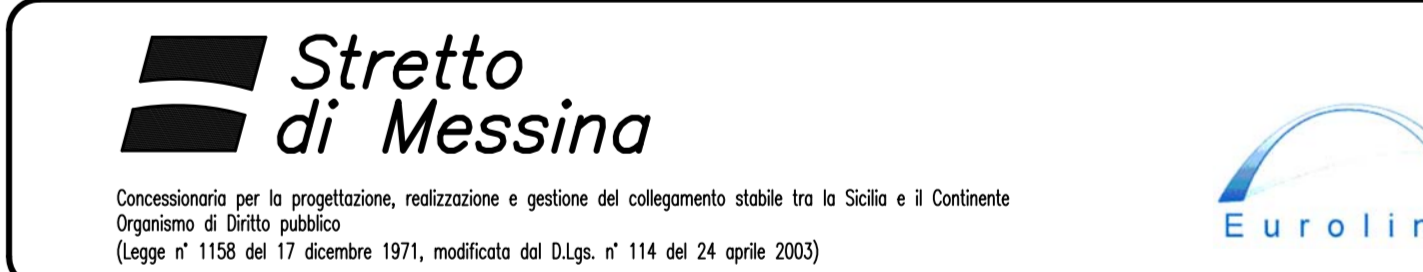
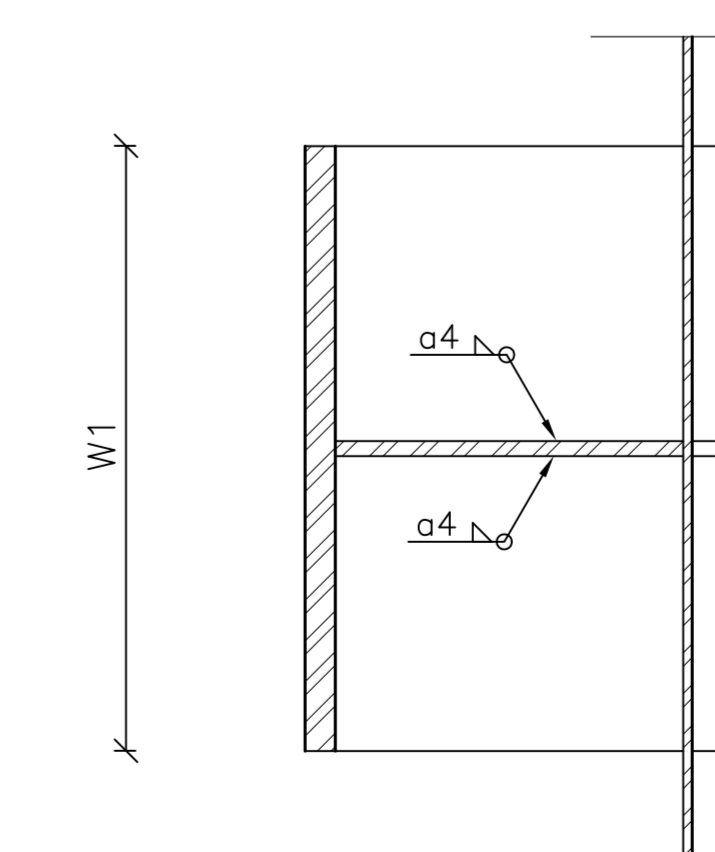
DETTAGLIO 7, MENSOLA SULL'IMPALCATO A TRAVERSO, FERROVIARIO
SCALE 1:5
(DIMENSIONI COME PER IL DETTAGLIO 5)
DETAIL 7, AT CROSS GIRDER, RAILWAY
SCALE 1:5
(DIMENSIONS AS FOR DETAIL 5)



SEZIONE H-H
SCALE 1:5
SECTION H-H
SCALE 1:5



SEZIONE I-I
SCALE 1:5
SECTION I-I
SCALE 1:5



PONTE SULLO STRETTO DI MESSINA
PROGETTO DEFINITIVO

EUROLINK S.C.p.A.
IMPREGILO S.p.A. (Mandatante)
SOCIETA' ITALIANA PER CONDOTTE D'ACQUA S.p.A. (Mandatante)
COOPERATIVA MURATORI E CEMENTISTI - C.M.C. di Ravenna Soc. Coop. a.r.l. (Mandatante)
SACOT S.A.S. (Mandatante)
ISHKAWAJMA - HARIMA HEAVY INDUSTRIES CO. Ltd. (Mandatante)
A.C.I. S.C.P.A. - CONSORZIO STABILE (Mandatante)

| | | | |
|--|---|---|--|
| IL PROGETTISTA COWI Ing. E.M. Vajz Ordine Ingegneri Milano n° 15408 | IL CONTRATTORE GENERALE Project Manager (Ing. P.P. Marcheselli) | STRETTO DI MESSINA Direttore Generale e RSP Valutazione (Ing. G. Fiammenghi) | STRETTO DI MESSINA Amministratore Delegato (Dott. P. Ciucci) |
|--|---|---|--|

OPERA D'ATTRAVERSAMENTO
SOVRASTRUTTURE
IMPALCATO
GENERALE
BY PASS - MENSOLE

| REV. | DATA | DESCRIZIONE | REDATTO | VERIFICATO | APPROVATO | SCALE |
|------|------------|------------------|---------|------------|-----------|-------|
| 10 | 20-08-2011 | EMISSIONE FINALE | LUJ/MSO | HPQ | HPQ/LSJ | VARIE |