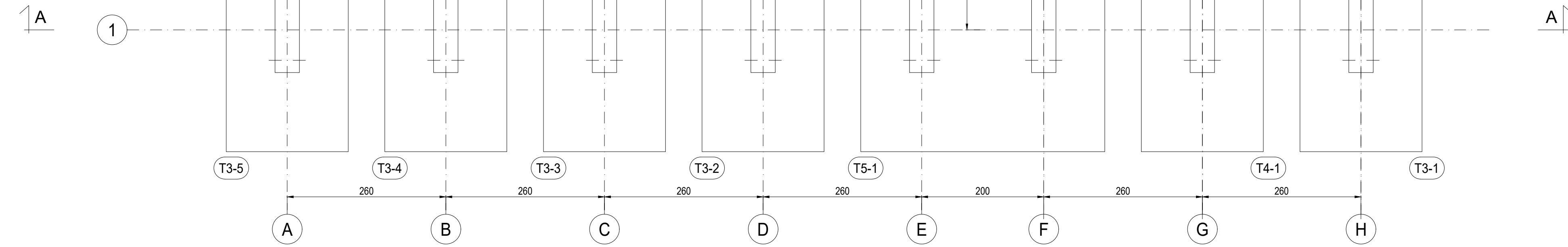
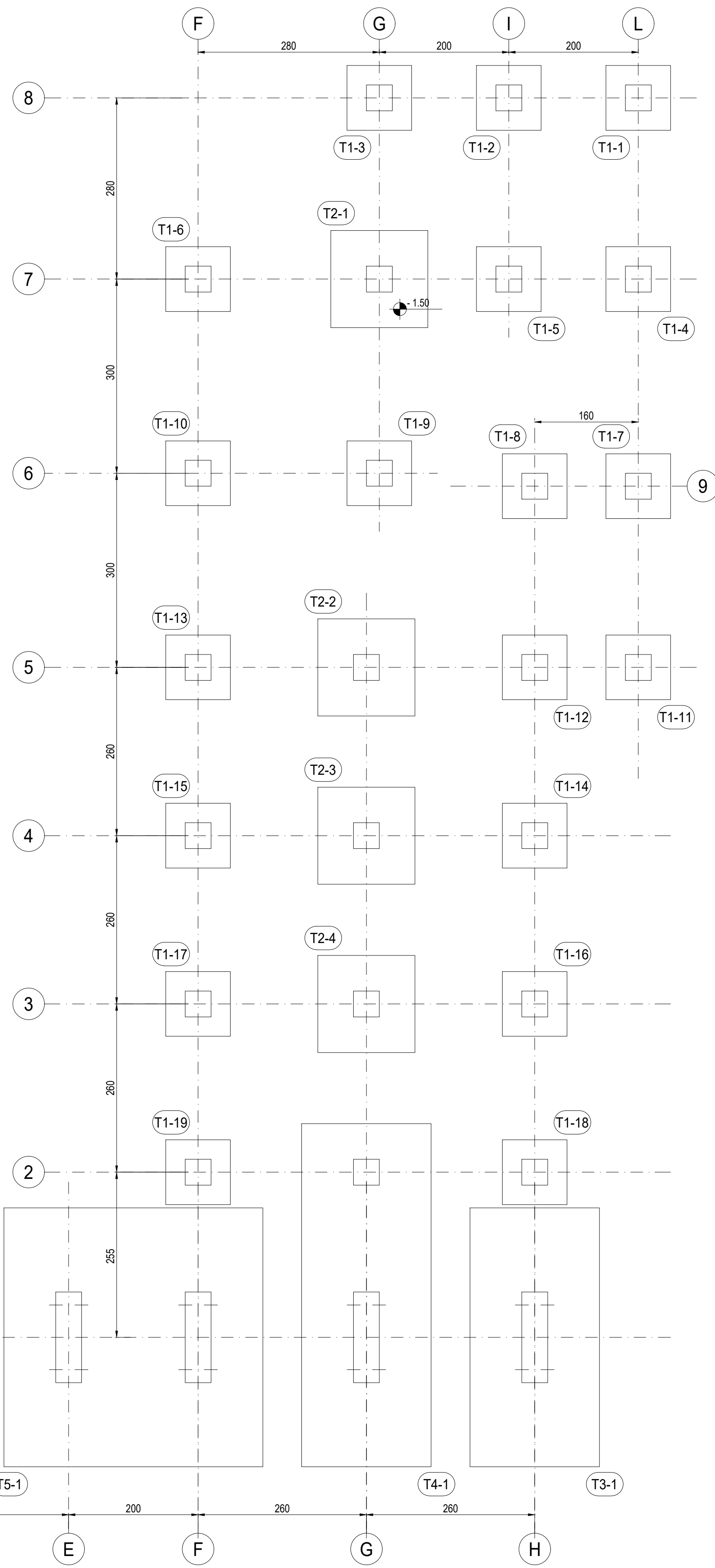


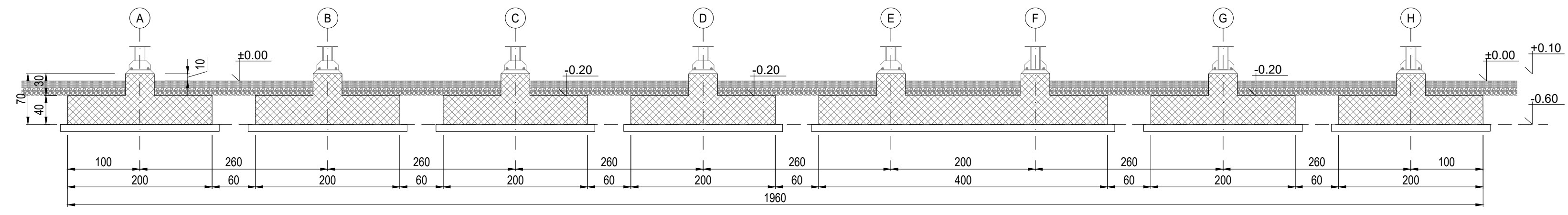
PLANIMETRIA FONDAZIONE E TRACCIAMENTO

Scala: 1:50

ID BASAMENTI	A		B		C		D	
	X	Y	X	Y	X	Y	X	Y
T1-1	-102.061	-60.993	-101.062	-60.967	-101.036	-61.967	-102.036	-61.993
T1-2	-104.061	-61.044	-103.061	-61.019	-103.035	-62.018	-104.035	-62.044
T1-3	-106.060	-61.095	-105.060	-61.070	-105.035	-62.069	-106.034	-62.095
T1-4	-101.990	-63.792	-100.990	-63.766	-100.964	-64.766	-101.964	-64.792
T1-5	-103.989	-63.843	-102.989	-63.818	-102.964	-64.817	-103.963	-64.843
T1-6	-108.787	-63.966	-107.788	-63.941	-107.762	-64.940	-108.762	-64.966
T1-7	-101.908	-66.991	-100.908	-66.965	-100.882	-67.965	-101.882	-67.991
T1-8	-103.507	-67.032	-102.489	-67.006	-102.482	-68.006	-103.481	-68.032
T1-9	-105.911	-66.894	-104.912	-66.868	-104.886	-67.868	-105.886	-67.893
T1-10	-108.710	-66.965	-107.711	-66.940	-107.685	-67.939	-108.685	-67.965
T1-11	-101.836	-69.790	-100.836	-69.764	-100.810	-70.764	-101.810	-70.790
T1-12	-103.435	-69.831	-102.436	-69.805	-102.410	-70.805	-103.410	-70.831
T1-13	-108.634	-69.964	-107.634	-69.939	-107.608	-70.938	-108.608	-70.964
T1-14	-103.369	-72.430	-102.369	-72.405	-102.343	-73.404	-103.343	-73.430
T1-15	-108.567	-72.563	-107.567	-72.538	-107.542	-73.537	-108.541	-73.563
T1-16	-103.302	-75.029	-102.302	-75.004	-102.277	-76.003	-103.276	-76.029
T1-17	-108.500	-75.163	-107.501	-75.137	-107.475	-76.137	-108.475	-76.162
T1-18	-103.235	-77.628	-102.236	-77.603	-102.210	-78.602	-103.210	-78.628
T1-19	-108.434	-77.762	-107.434	-77.736	-107.408	-78.736	-108.408	-78.761
T2-1	-106.245	-63.652	-104.745	-63.613	-104.707	-65.113	-106.206	-65.151
T2-2	-106.291	-69.655	-104.791	-69.616	-104.753	-71.116	-106.252	-71.154
T2-3	-106.224	-72.254	-104.725	-72.215	-104.686	-73.715	-106.186	-73.753
T2-4	-106.157	-74.853	-104.658	-74.815	-104.620	-76.314	-106.119	-76.352
T3-1	-103.708	-78.699	-101.709	-78.641	-101.666	-82.640	-103.666	-82.691
T3-2	-113.505	-78.944	-111.506	-78.893	-111.403	-82.891	-113.402	-82.943
T3-3	-116.104	-79.010	-114.105	-78.959	-114.002	-82.958	-116.002	-83.009
T3-4	-118.703	-79.077	-116.704	-79.026	-116.601	-83.025	-118.601	-83.076
T3-5	-121.302	-79.144	-119.303	-79.092	-119.201	-83.091	-121.200	-83.142
T4-1	-106.341	-77.459	-104.341	-77.407	-104.206	-82.707	-106.205	-82.758
T5-1	-110.906	-78.877	-108.907	-78.775	-108.805	-82.773	-110.803	-82.876

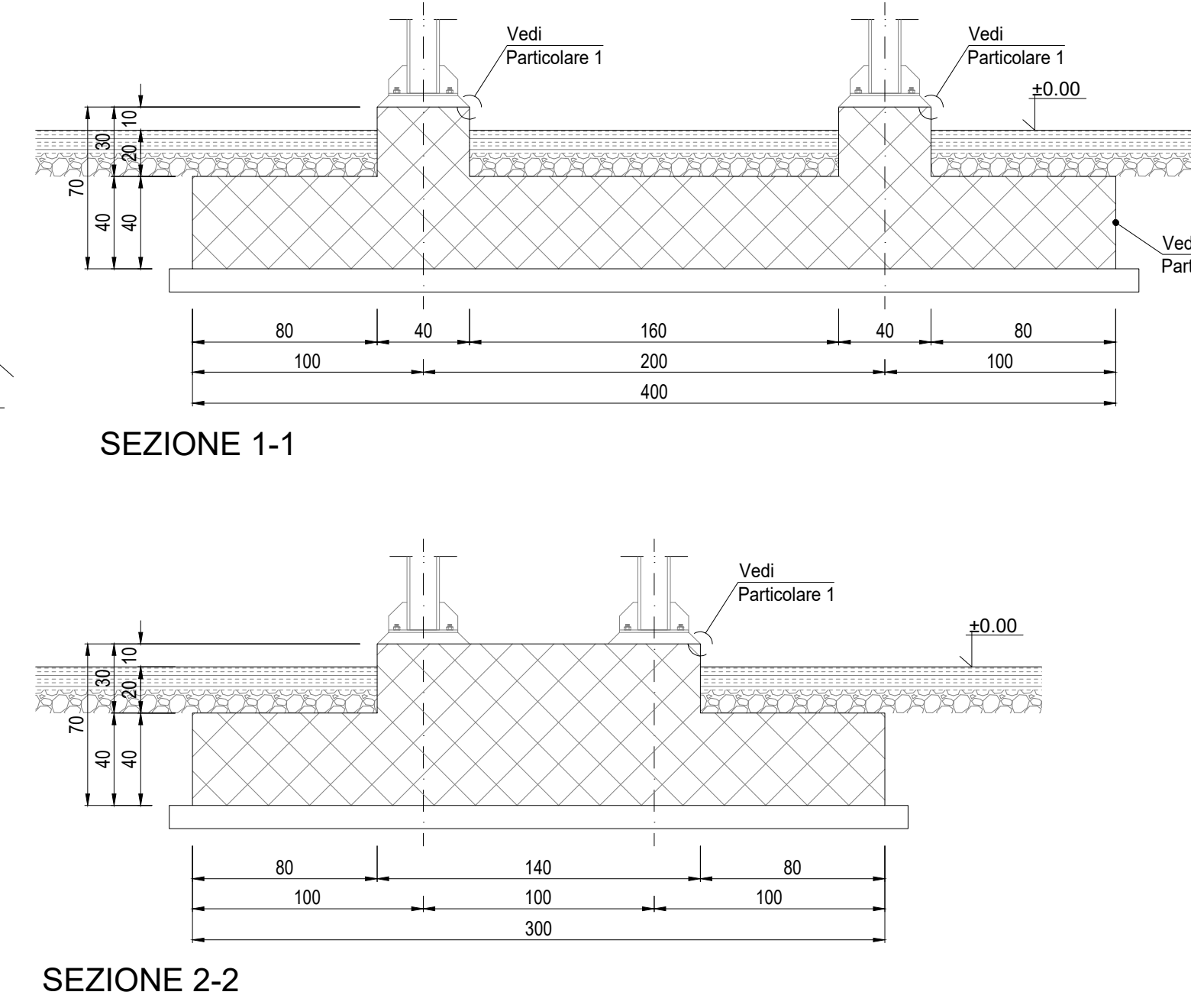
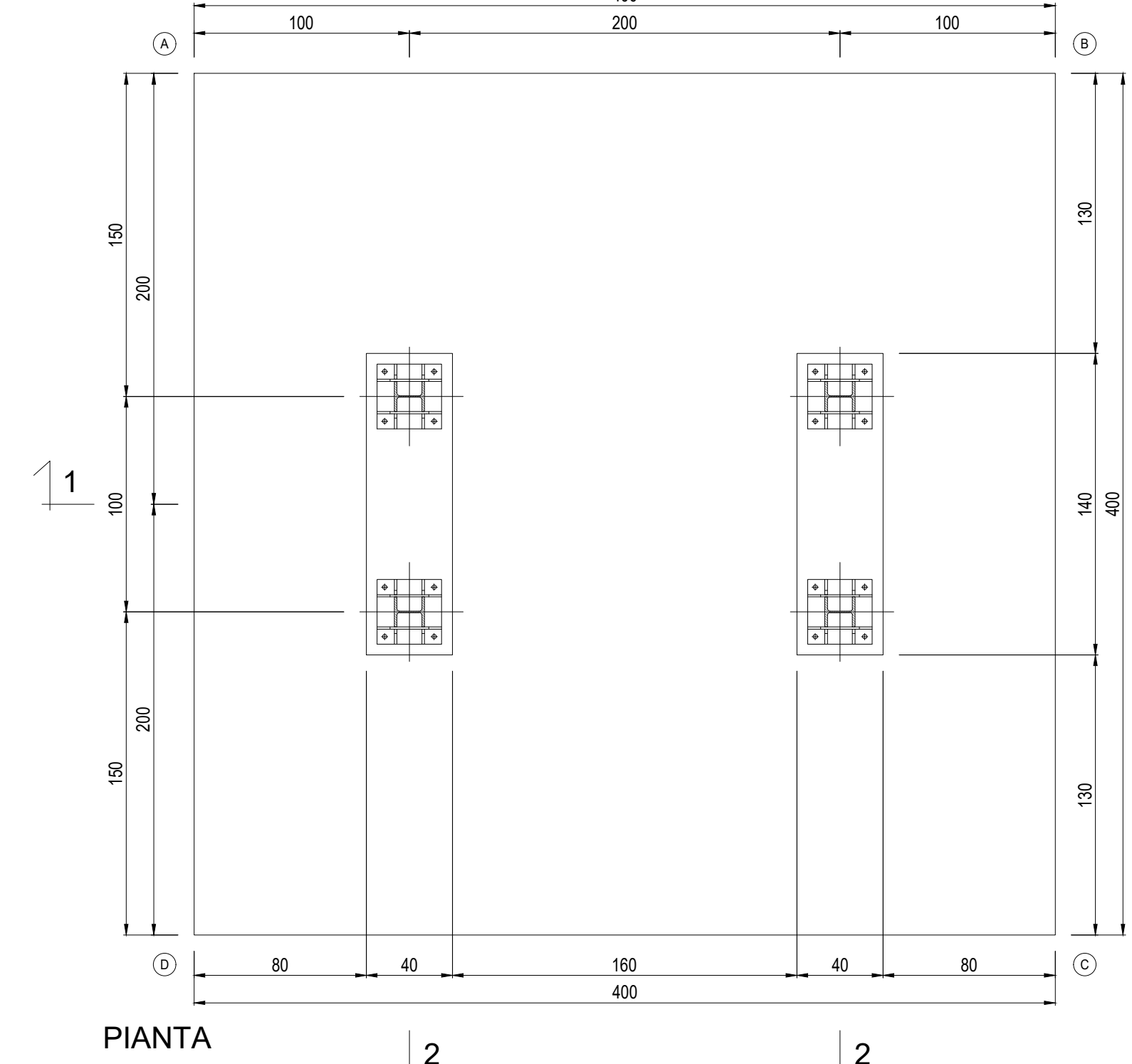


SEZIONE A-A
Scala: 1:50



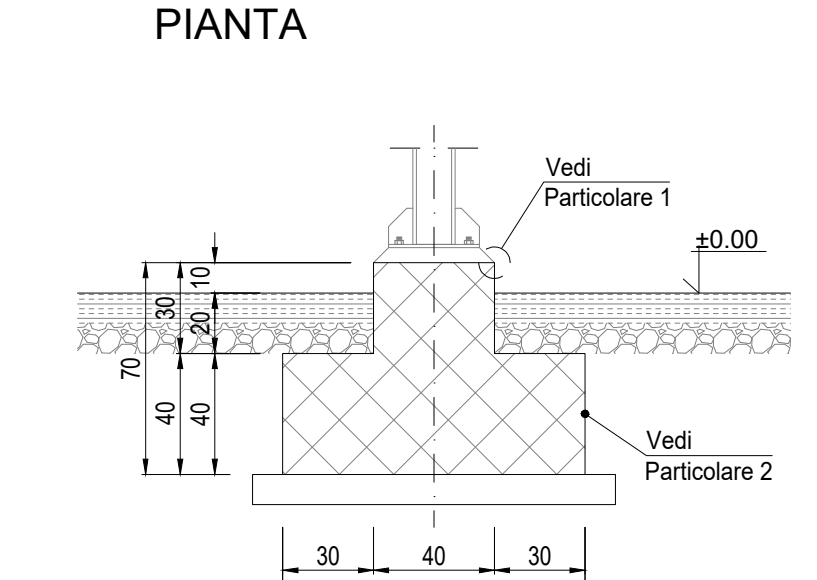
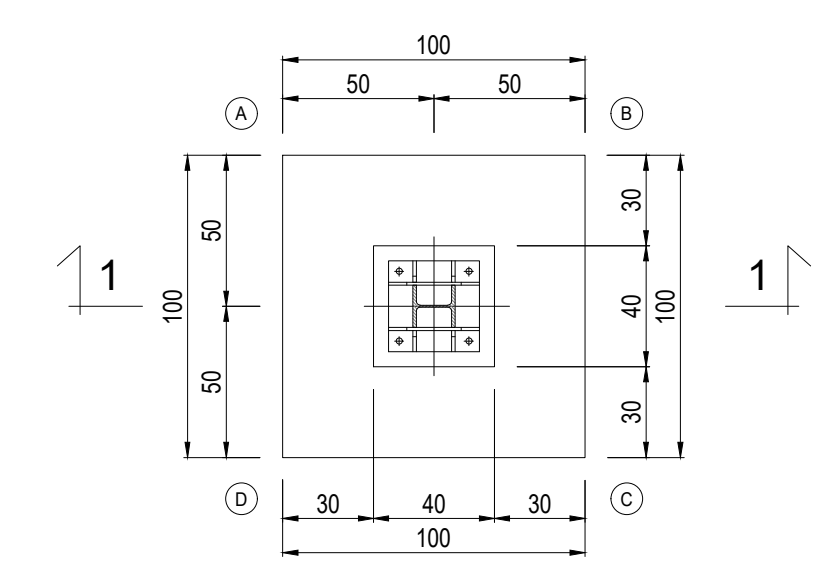
PLINTO T5

Scala: 1:25



PLINTO T1

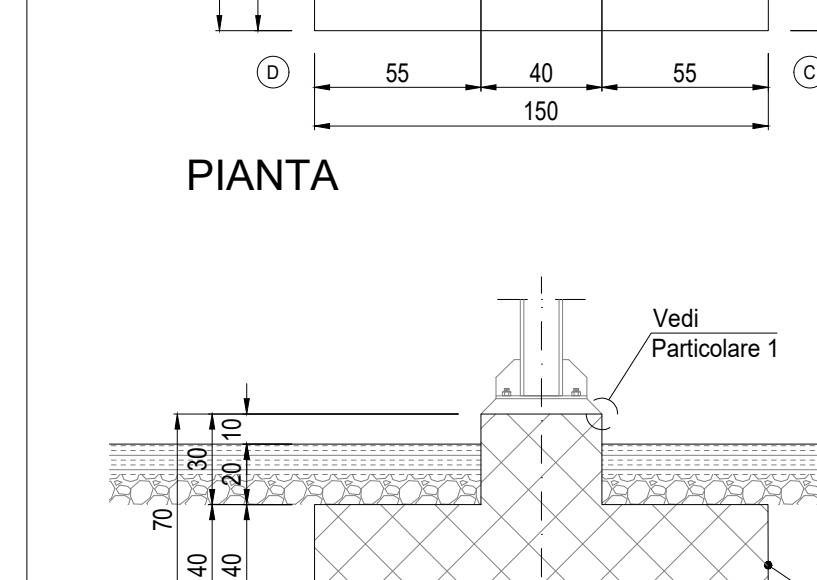
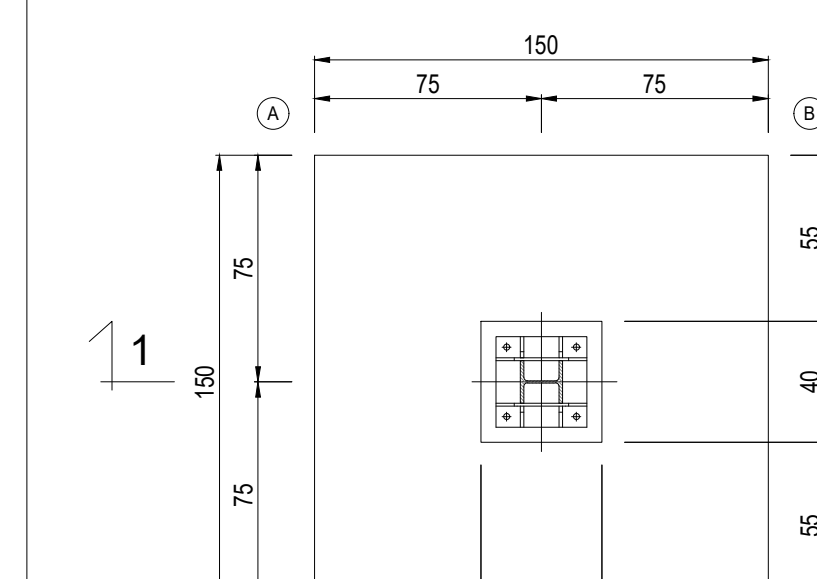
Scala: 1:25



PIANTA
SEZIONE 1-1

PLINTO T2

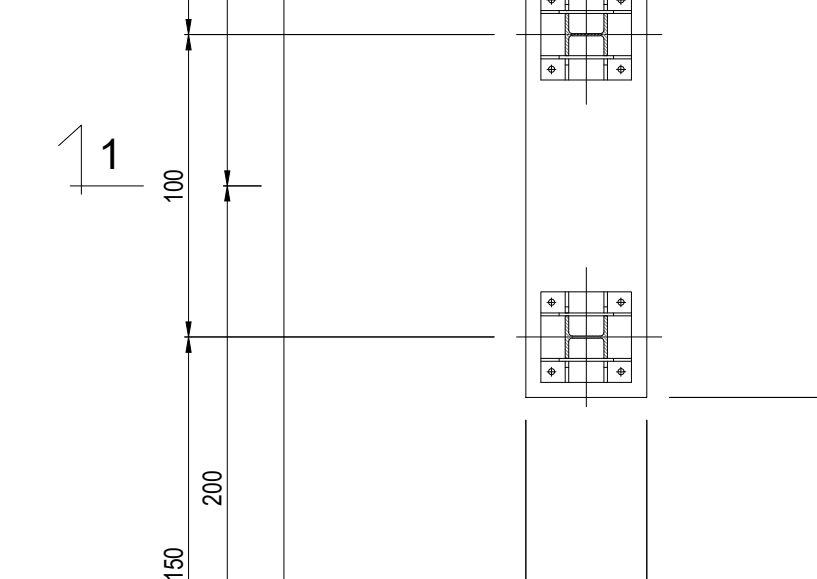
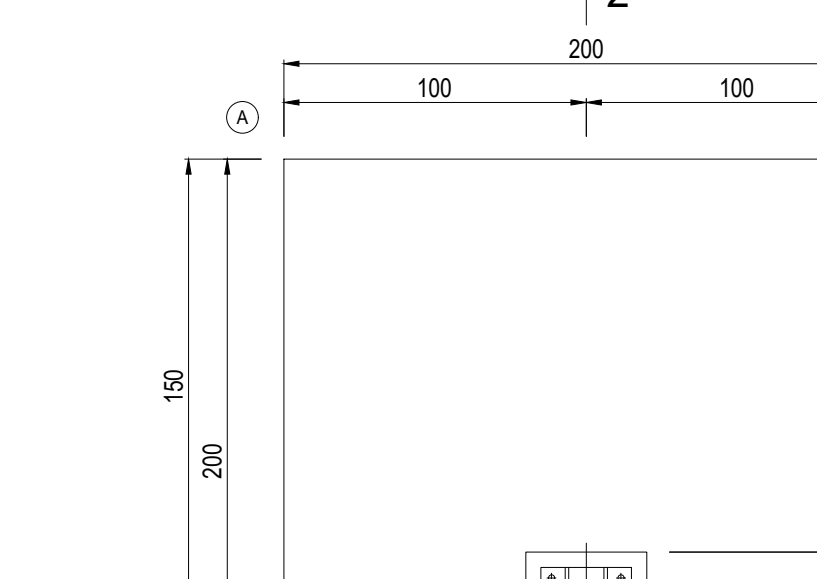
Scala: 1:25



PIANTA
SEZIONE 1-1

PLINTO T3

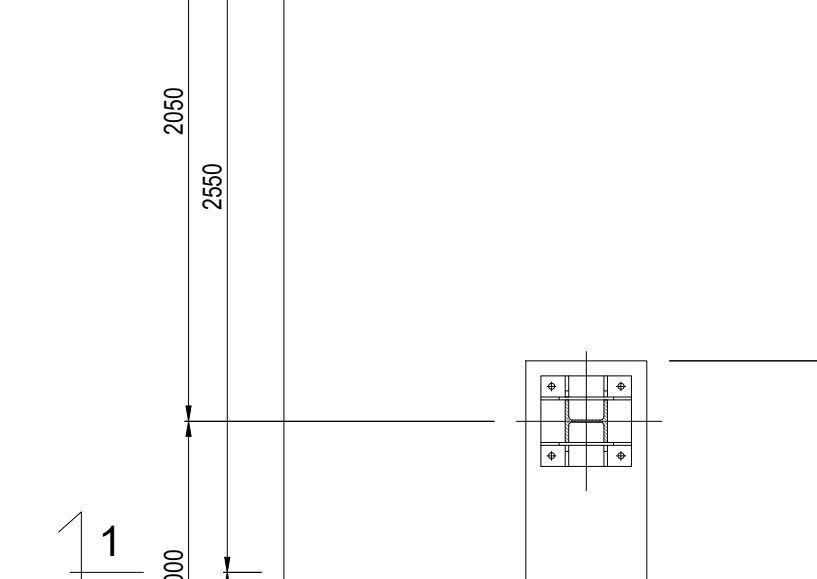
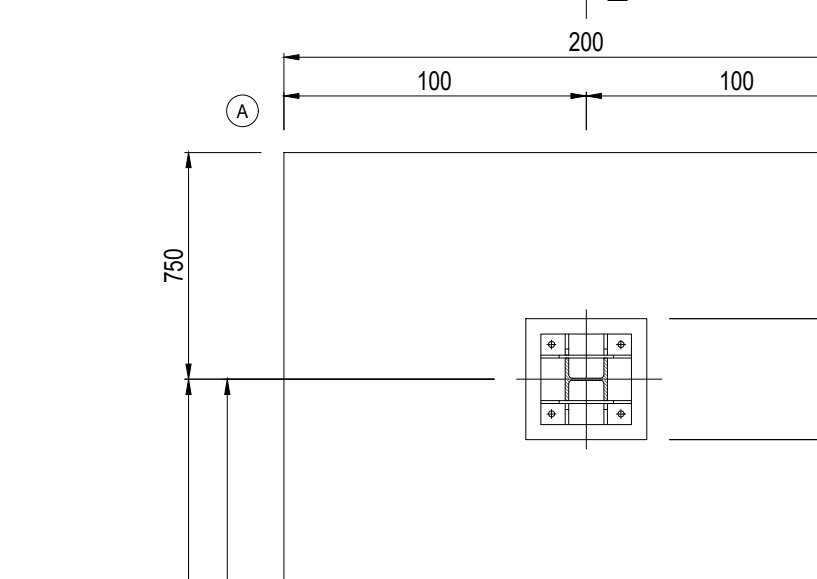
Scala: 1:25



PIANTA
SEZIONE 1-1

PLINTO T4

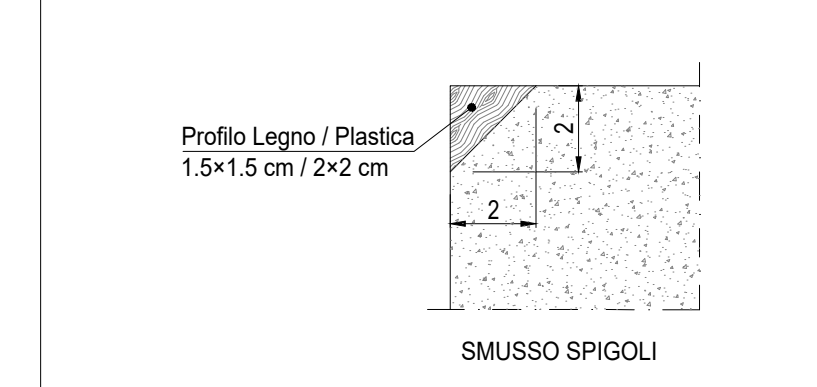
Scala: 1:25



PIANTA
SEZIONE 1-1

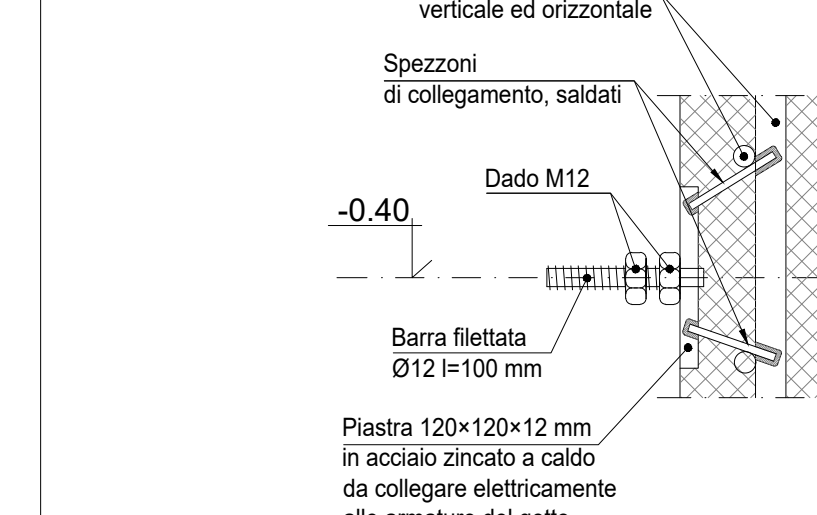
PARTICOLARE 1

Scala: 1:5

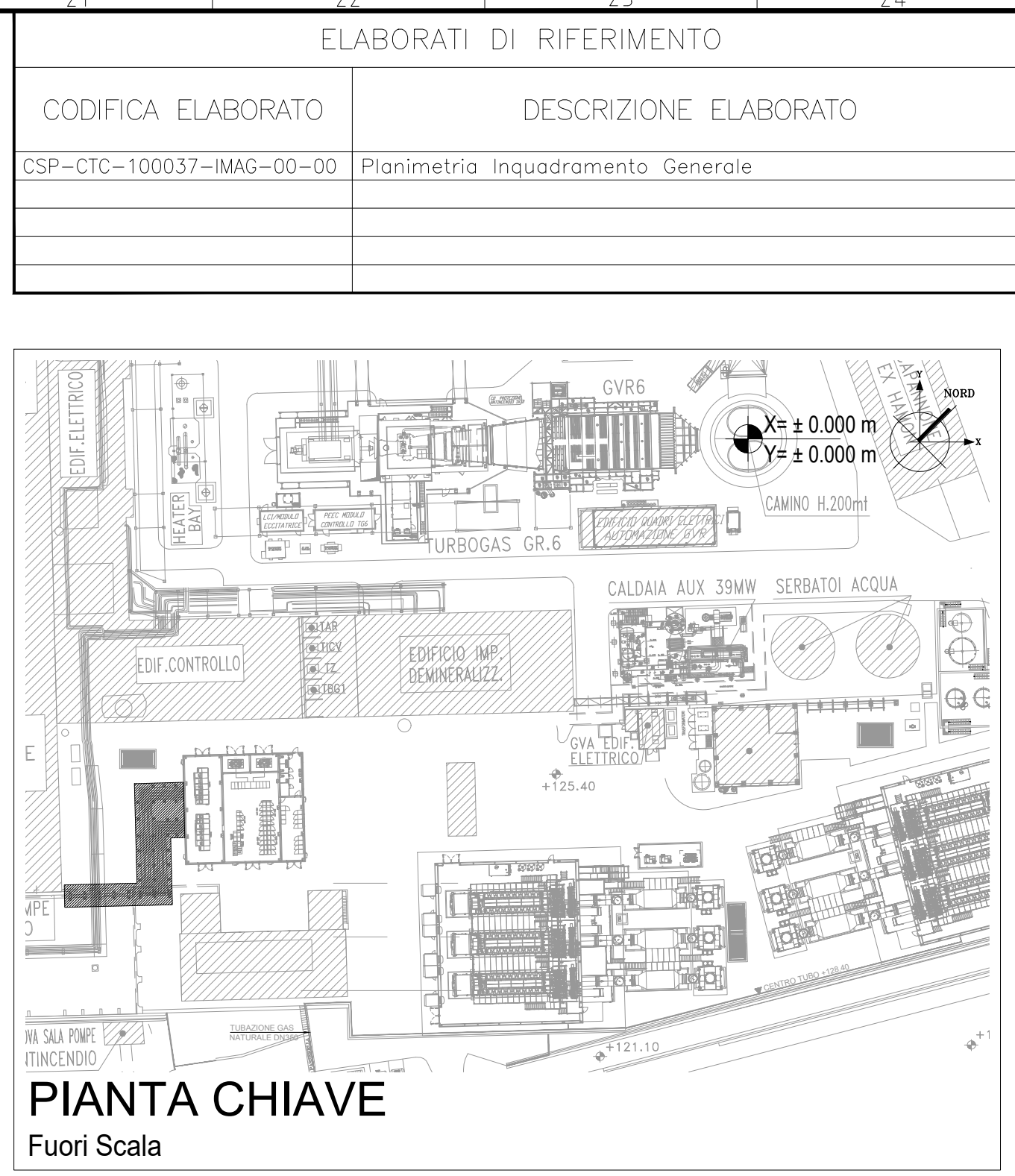


PARTICOLARE 2

Scala: 1:5



NOTA BENE:
1) La flettitura della piastra dovrà essere protetta con un tappo da rimuovere a getto eseguito.
2) La piastra di messa a terra sono collegate elettricamente ai ferri di armatura. Tutti i ferri di armatura devono essere collegati in modo da garantire la continuità elettrica come specificato dalla NORMA CEI 81-1 PUNTO 1.3.1.



NOTE
(1) Tutte le dimensioni sono espresse in cm
(2) Tutte le quote altimetriche sono espresse in metri

CARATTERISTICHE DEI MATERIALI
Calcestruzzo per opere di fondazione classe C25/30 (UNI EN 206-1)
Massima dimensione aggregati425 mm
Classe di consistenza:S4 (UNI EN 206-1)
Classe di esposizione:XX (UNI EN 206-1)
Rapporto acqua/cemento massimo:0.60. Dosaggio minimo cemento 300 kg/m³
Copripetro nominale armature 30 mm
ACCIAIO IN BARRE PER CALCESTRUZZO
B 450 C Salvo e controllato in stabilimento
ACCIAIO PER CARPENTERIA FONDICA
S 235JR (Fe 360B) UNI EN 10025 (1.1.3.4.1 delle NTC)
GROUT DI SIGILLATURA - malta antiritiro
F_c min:40 N/mm²
TIRAFONDI
Barre filettate in acciaio zincato classe 8.8

Q.ta ± 0.00 = 125.60 m S.l.m

Stamp area containing professional seals, revision table, and project information.

00	15/09/19	EMMISSIONE PER AUTORIZZAZIONI	Bietti	Togliareri	Bietti
REV.	DATA	DESCRIZIONE DELLA REVISIONE	EMMISSIONE	DESEGNAZIONE	VERIFICATO
	FILE	Revision description	Issued by	Prepared by	Checked by

IMPIANTO: CENTRALE DI CASSANO D'ADDA
PIANTA: IMPIANTO MOTORI A GAS
TITOLO: CARP. FONDAZIONI CONDOTTO SBARRE
PIANTA E TRACCIAMENTO

DISEGNO: CSP-CSC-100062-IMAG
SCALE: WIRE
FORMATO: A0
NOME FILE: CSP-CSC-100062-IMAG-00-00_Corp Cond Sbarre.dwg
DATA: 01/01/19