



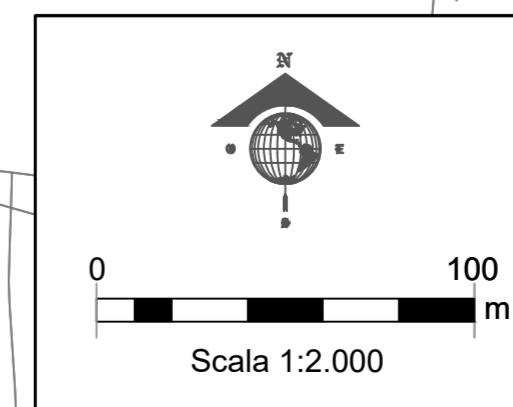
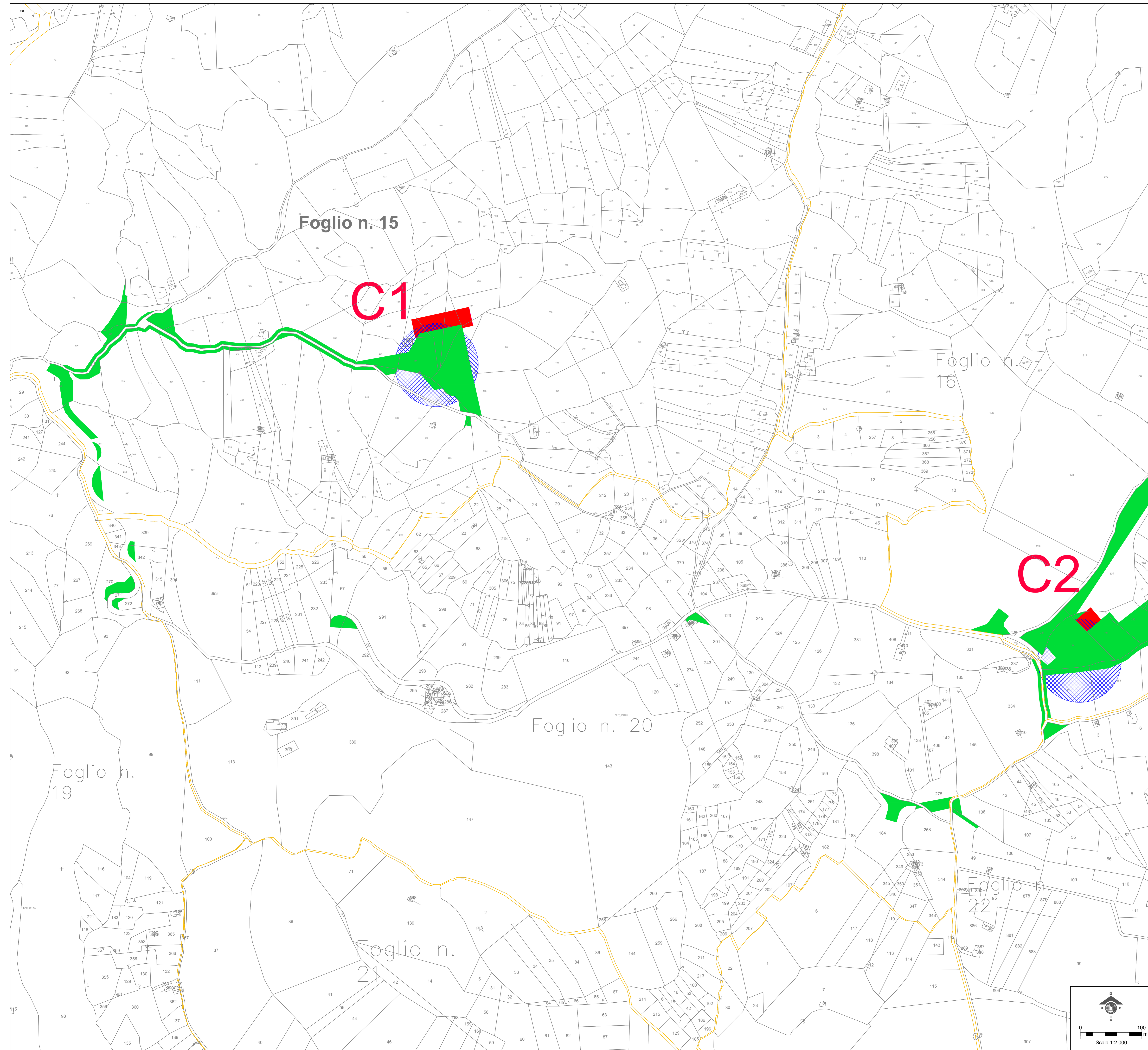


LEGENDA

-  LIMITI FOGLI CATASTALI COMUNE DI CARAFFA DI CATANZARO
-  AREE INTERESSATE DA ESPROPRIO DEFINITIVO
-  AREE INTERESSATE DA OCCUPAZIONE TEMPORANEA
-  AREE INTERESSATE DA SERVITU' PERMANENTE DI SORVOLO



Comittente: **e-on** E.ON CLIMATE & RENEWABLES ITALIA S.R.L.
 Via Andrea Doria, 4152 - 00192 Roma
 P.IVA/C.F. 0640370968
 pec: e.onclimate@renewablesitalia.it


Titolo del Progetto: **PARCO EOLICO "CARAFFA DI CATANZARO"**

Documento: **PROGETTO DEFINITIVO** PECA - P13.01a

ID PROGETTO: PECA DISCIPLINA: P TIPOLOGIA: FORMATO: 1230X980

Elaborato: **Planimetria piano particolare d'esproprio - Comune di Caraffa di Catanzaro- Tav. 01**

Progettazione:

-  Ing. Saverio Pagliuso
- Ing. Claudio Coscarella
- Ing. Mario Francesco Perri
- Ing. Giorgio Salatino

Rev.	Data	Revisione	Descrizione Revisione	Redatto	Controllato	Approvato
00	18/07/2019	PRIMA EMISSIONE		GEMSA	GEMSA	ECRI