

NOTES

NOTE 1: TOP OF EMBEDDED STEEL AND CONCRETE ARE ON LEVEL ± 0.00
 NOTE 2: TRANSLATION PREVENTION OF BASEFRAME, SEE TABLE 2.
 NOTE 3: FOUNDATION DESIGN REQUIREMENTS ACC. TO DRWG 2021245E AND

NOTE 4: TOLERANCES:

GENERAL TOLERANCES FOR CONCRETE WORK: ± 20 mm.

WHERE OTHERWISE NOT SPECIFIED.

TOLERANCES MUST NOT BE ADDED.

EMBEDDED STEEL:

POSITION TOLERANCES:

HORIZONTAL ± 10mm.

VERTICAL +10/-0mm.

WHERE OTHERWISE NOT SPECIFIED.

TOLERANCE FOR ENTIRE SURFACE:

5mm ON A DISTANCE OF 3m.

LOCAL SMALL CAVITIES ARE ACCEPTABLE.

NOTE 5: LOADS ARE TO BE AFFECTED AT CENTRE OF EACH SUPPORT.

NOTE 6: NO GAP BETWEEN THE CONCRETE AND EMBEDDED STEEL ARE ALLOWED.

NOTE 7: EMBEDDED STEEL DETAILS ACCORDING TO TABLE 4:1.

NOTE 8: ALL EXPOSED CONCRETE EDGES TO HAVE A 25x25 mm CHAMFER.

NOTE 9: MINIMUM CARRYING CAPACITY FOR SITE ERECTION 120 kN/m².

NOTE 10: NO CONSTRUCTIONS JOINTS WILL BE PERMITTED IN THE GAS TURBINE FOUNDATION.

NOTE 11: ALL CONCRETE SURFACES AND EMBEDDED STEEL ARE HORIZONTAL AND AT SAME LEVEL, 2990 mm BELOW GAS TURBINE CENTER LINE.

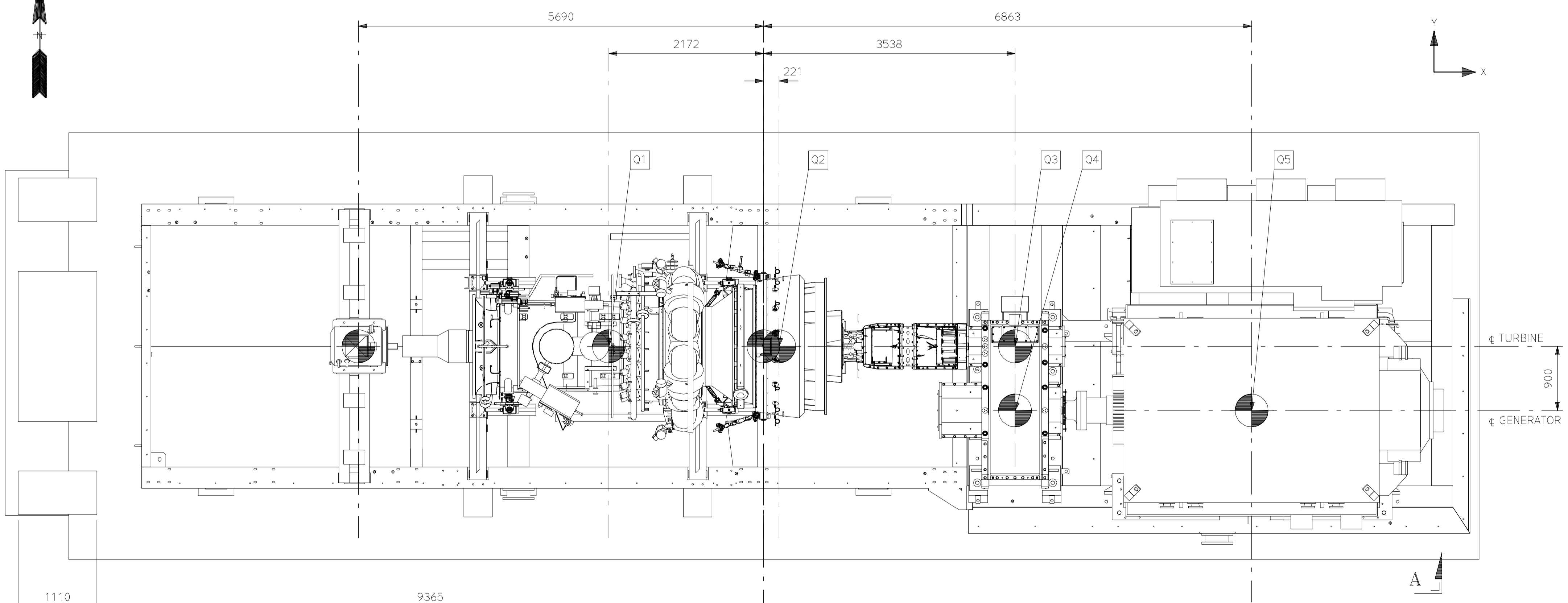
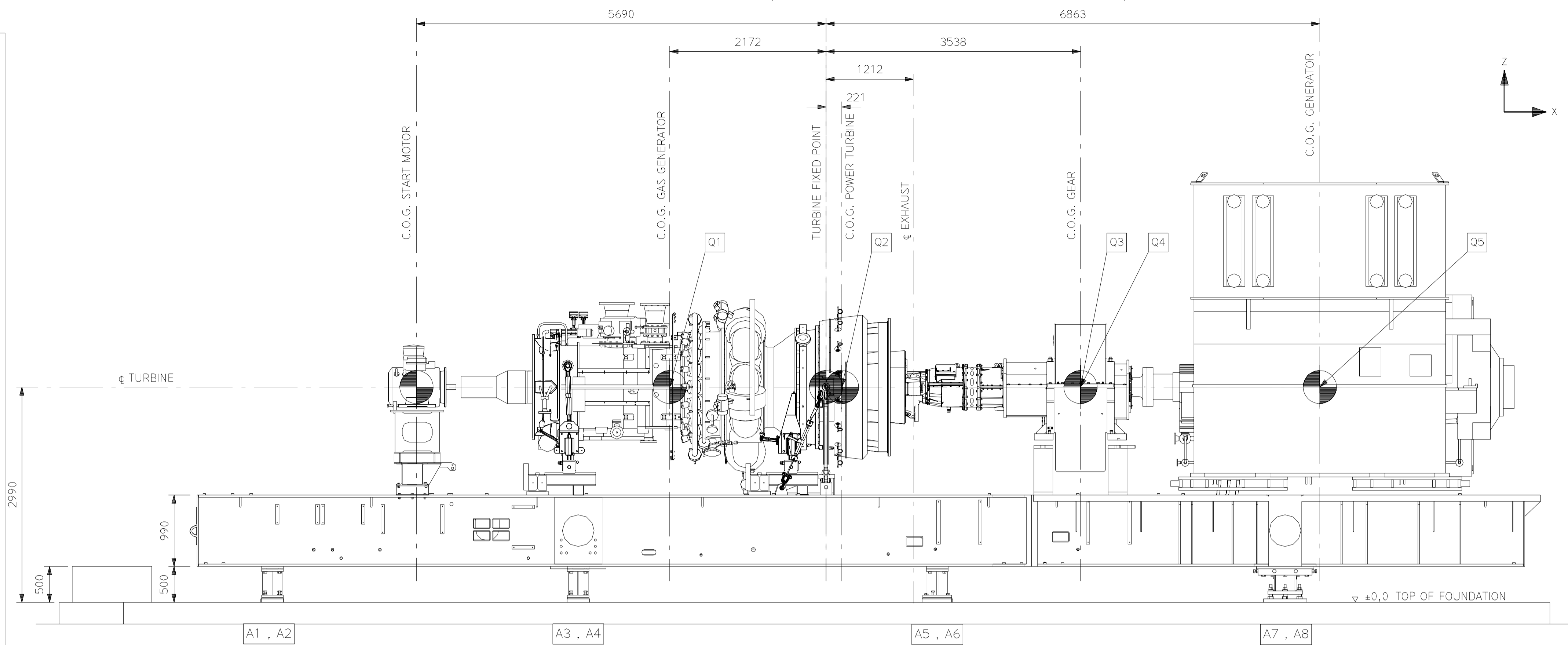


TABLE 1: ADDITIONAL INFORMATION	
FOUNDATION LOADS INTENSITY	2098471

TABLE 2: TRANSLATION PREVENTION OF BASEFRAME, 8P.			
SUPPORT	X-DIRECTION	Y-DIRECTION	Z-DIRECTION
A1	SLIDING	LOCKED	LOCKED
A2	SLIDING	LOCKED	LOCKED
A3	SLIDING	LOCKED	LOCKED
A4	SLIDING	LOCKED	LOCKED
A5	SLIDING	LOCKED	LOCKED
A6	SLIDING	LOCKED	LOCKED
A7	LOCKED	LOCKED	LOCKED
A8	LOCKED	SLIDING	LOCKED

TABLE 3: ROTATING PARTS, SGT-700.			
COMPONENT	WEIGHT [kg]	SPEED OPERATING [rpm]	
Q1	GAS GENERATOR ROTOR	1690	9600
Q2	POWER TURBINE ROTOR	1475	6485
Q3	GEARBOX PINION	687	6485
Q4	GEARBOX WHEEL	7926	1500
Q5	GENERATOR ROTOR	21200	1500

TABLE 4: EMBEDDED STEEL	
COMPONENT	DRAWING No.
A1 - A6	2043439
A7 - A8	2088107
D1 - D6	2043446

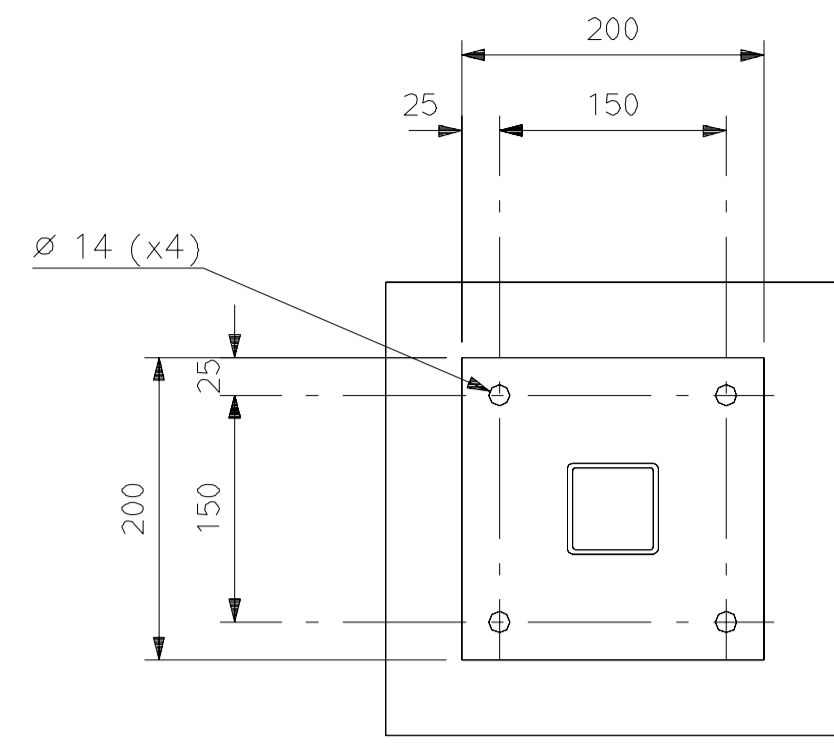
Rev	Specification	Date	Sign
H	TABLE 2 UPDATED AS DWG 2091814	14-06-30	JF

Created in PDMS PROJECT UGC

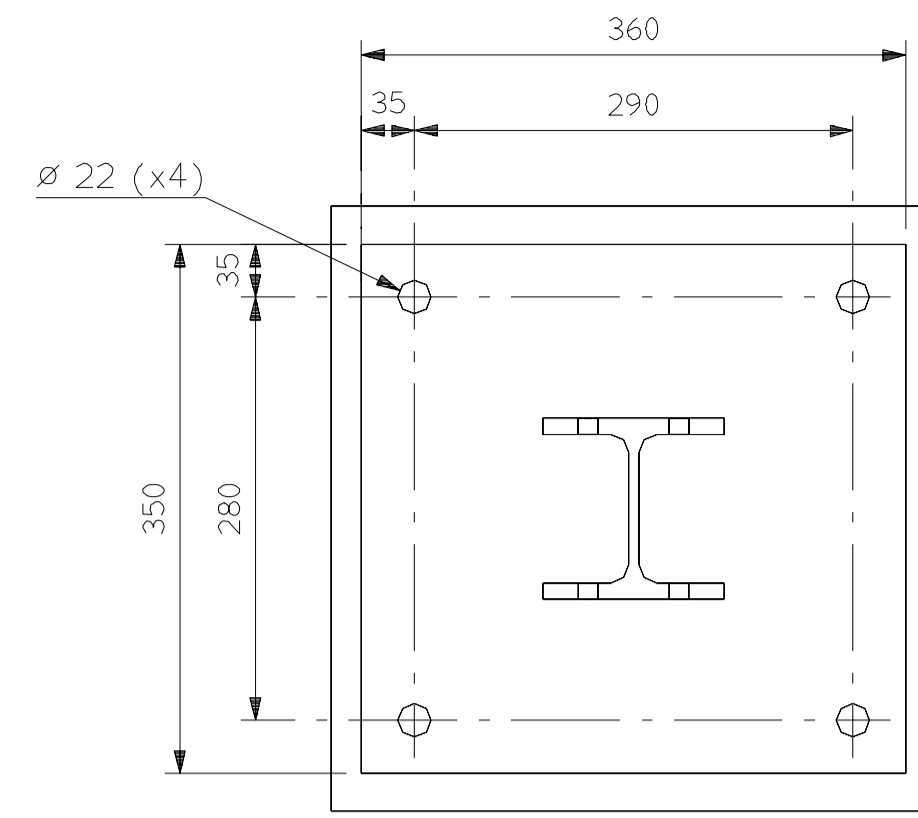
This document is issued in Pulse.

Prepared by G. CLEEVE	Acc. for prod.	In principle conforming to AS with the same Doc. no. <input type="checkbox"/> yes <input type="checkbox"/> no	Scale N.T.S.
Checked by 2012-10-30 Anders Johansson	Respons. dept. OEM12	Title Foundation general layout Multipoint support Oil and gas package	Langu. E
Appr. by 2012-10-30 Stefan Arfvedsson	Date 2012-10-15	Take over dept.	No. of sh. 4
Latest revision H	Doc. kind LH107	HG/UPS 9100	Sheet 1
SIEMENS		Document No. 2098470	

We reserve all rights in this document and in the information contained therein. Reproduction, distribution or any other use without express authority is strictly forbidden.
© Siemens Industrial Turbomachinery AB



PLATFORM SUPPORT DETAIL



REMOVAL FRAME SUPPORT DETAIL

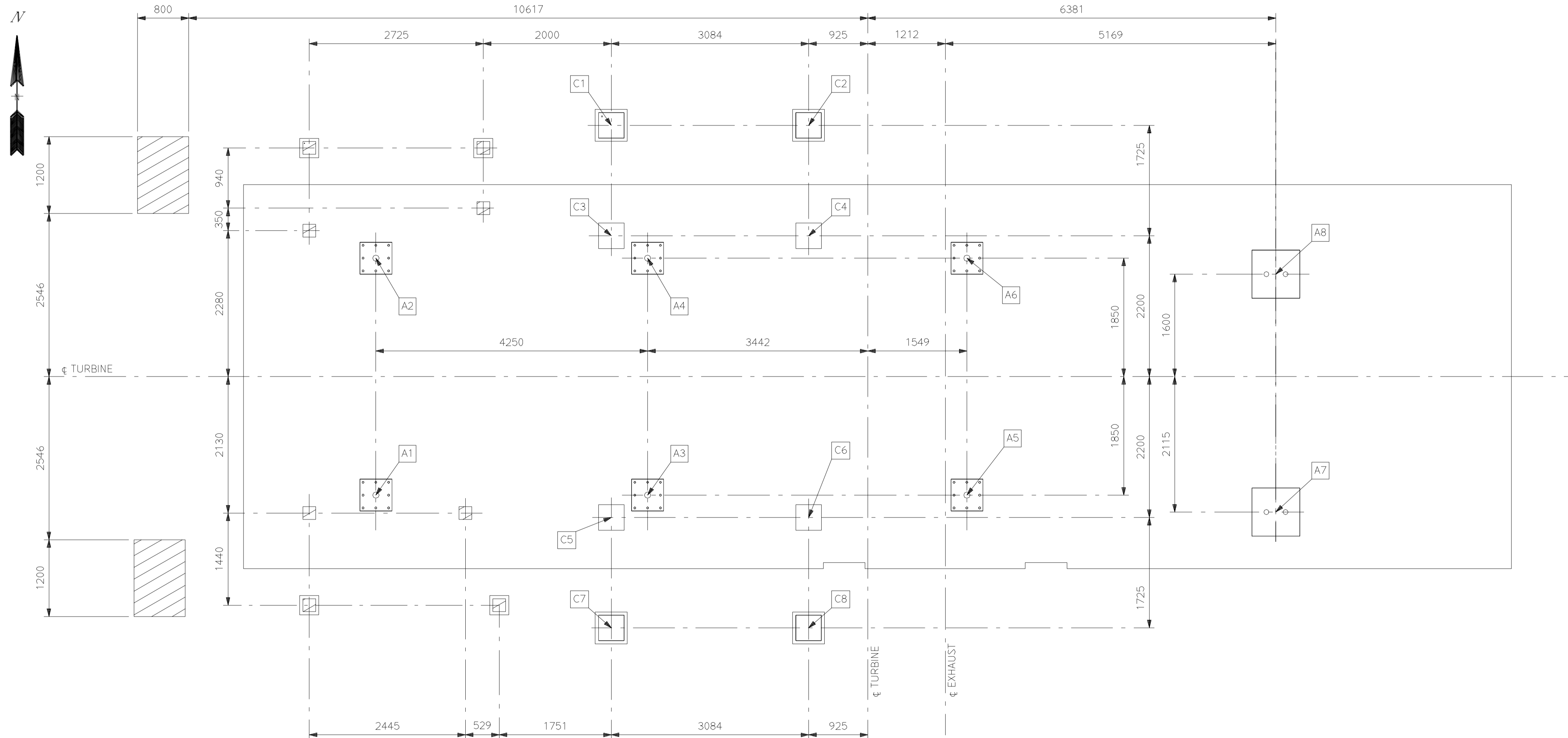


TABLE 4.1: DESCRIPTION OF LOAD POINTS						
ITEM	COMPONENT	TYPE	SIZE OF PLATE	DRAWING	JOINT TYPE	BOLT SIZE
A1-A6	BASEFRAME PACKAGE	EMBEDDED STEEL	500x500	2043 439	WELDED, DET. A SH. 4	N/A
A7-A8	BASEFRAME PACKAGE	EMBEDDED STEEL	750x750	2088 107	WELDED, DET. B SH. 4	N/A
B1	LUBE OIL COOLER	FOUNDATION SLAB	N/A	N/A	BOLTED, DET. D SH. 4	M16X175
C1-C8	REMOVAL	FOUNDATION SLAB	N/A	N/A	BOLTED, DET. D SH. 4	M20X175
D1-D6	EXHAUST	EMBEDDED STEEL	600x600	2043 446	WELDED, DET. C SH. 4	N/A
E1	FIRE PROTECTION CABINET	FOUNDATION SLAB	N/A	N/A	BOLTED, DET. D SH. 4	M16X145
F1-F8	STAIRS & PLATFORMS	FOUNDATION SLAB	N/A	N/A	BOLTED, DET. D SH. 4	M12X113



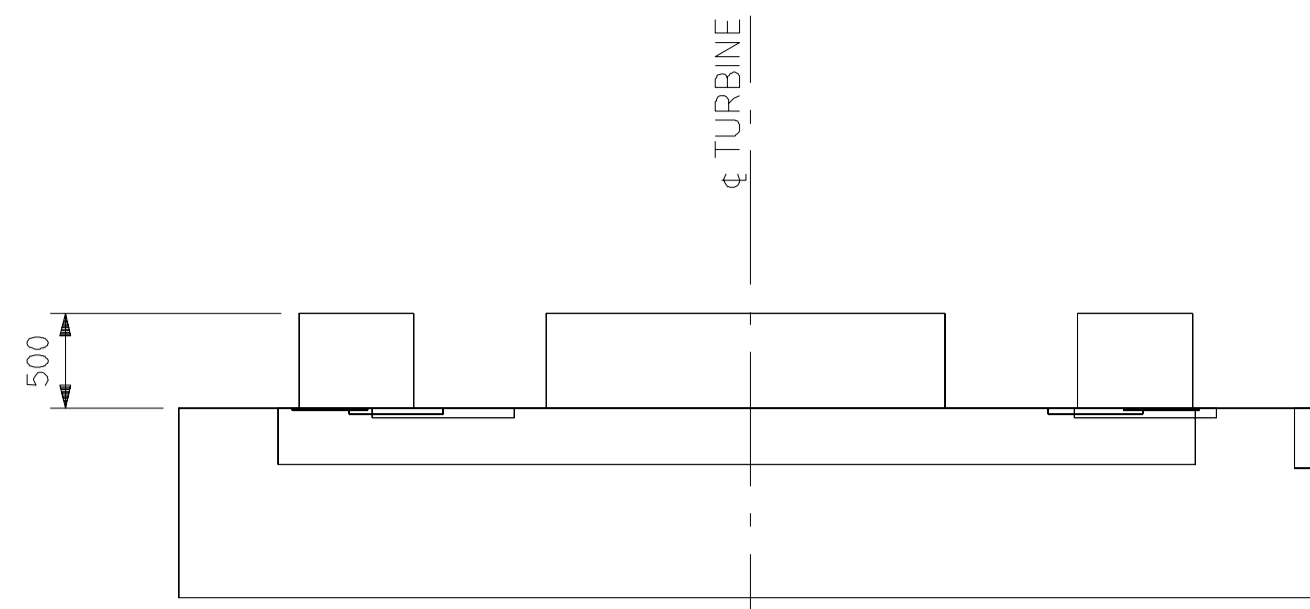
Prepared by G. CLEEVE	Acc. for prod.	In principle conforming to	AS with the same Doc. no. <input type="checkbox"/> yes <input type="checkbox"/> no	Scale N.T.S
Checked by 2012-10-30 Anders Johansson	Respons. dept. OEM12	Archive	Title Foundation general layout Positioning of load points, internal Oil and gas package	
Appr. by 2012-10-30 Stefan Arfvedsson	Date 2012-10-15	Take over dept.	Langu. E	
Latest revision H	Doc. Kind LH107	HG/UPS 9100	No. of sh. 4	
SIEMENS			Document No. 2098470	
			Sheet 2	

We reserve all rights in this document and in the information contained therein. Reproduction, distribution, modification, copying, or any other use without express authority is strictly forbidden.
 © Siemens Industrial Turbomachinery AB

Rev	Specification	Date	Sign
H	TABLE 2 UPDATED AS DWG 2091814	14-06-30	JF

Created in PDMS PROJECT UGC

This document is issued in Pulse.



SECTION B-B

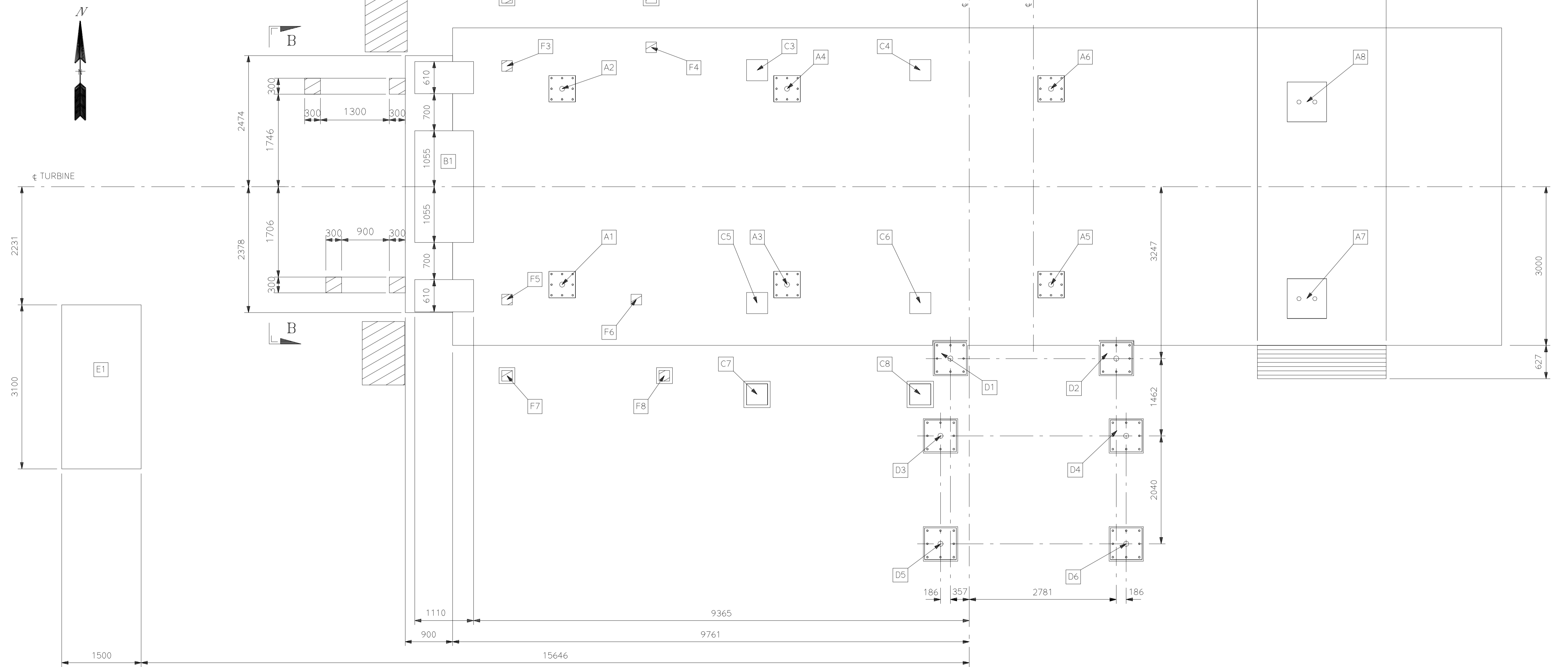


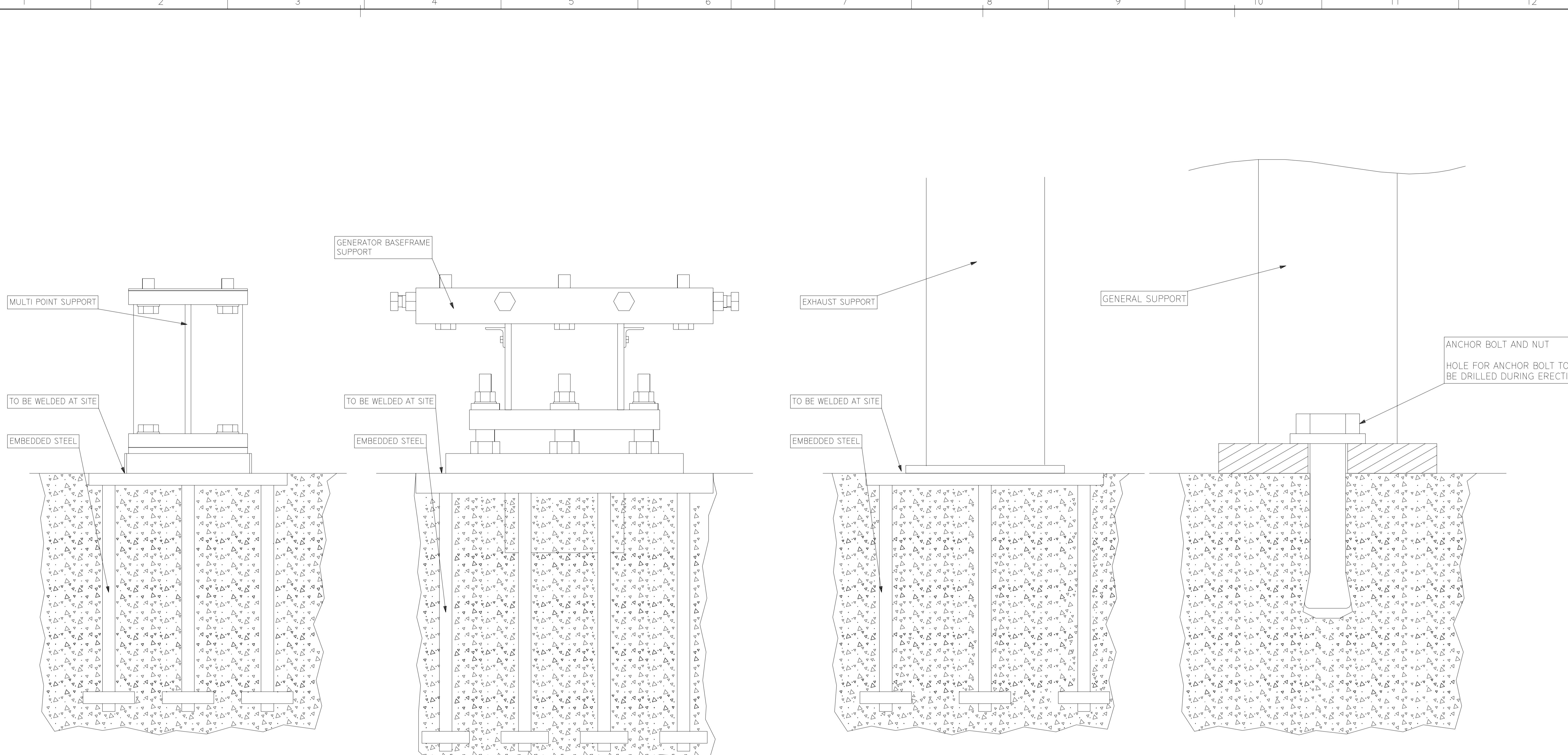
TABLE 4.1: DESCRIPTION OF LOAD POINTS						
ITEM	COMPONENT	TYPE	SIZE OF PLATE	DRAWING	JOINT TYPE	BOLT SIZE
A1-A6	BASEFRAME PACKAGE	EMBEDDED STEEL	500x500	2043 439	WELDED, DET. A SH. 4	N/A
A7-A8	BASEFRAME PACKAGE	EMBEDDED STEEL	750x750	2088 107	WELDED, DET. B SH. 4	N/A
B1	LUBE OIL COOLER	FOUNDATION SLAB	N/A	N/A	BOLTED, DET. D SH. 4	M16X175
C1-C8	REMOVAL	FOUNDATION SLAB	N/A	N/A	BOLTED, DET. D SH. 4	M20X175
D1-D6	EXHAUST	EMBEDDED STEEL	600x600	2043446	WELDED, DET. C SH. 4	N/A
E1	FIRE PROTECTION CABINET	FOUNDATION SLAB	N/A	N/A	BOLTED, DET. D SH. 4	M16X145
F1 - F8	STAIRS & PLATFORMS	FOUNDATION SLAB	N/A	N/A	BOLTED, DET. D SH. 4	M12X113



Prepared by G. CLEEVE	Acc. for prod.	In principle conforming to	AS with the same Doc. no.	yes <input type="checkbox"/>	Scale N.T.S
Checked by 2012-10-30 Anders Johansson	Respons. dept. OEM12	Archive	Title Foundation general layout Positioning of load points, internal Oil and gas package		
Appr. by 2012-10-30 Stefan Arvedsson	Date 2012-10-15	Take over dept.	Langu. E		
Latest revision H	Doc. Kind LH107	HG/UPS 9100	No. of sh. 4		
SIEMENS			Document No. 2098470		
			TYPICAL		
			Sheet 3		

H	TABLE 2: UPDATED AS DWG 2091814	14-06-30	JF
Rev	Specification	Date	Sign
Created in PDMS PROJECT UGC			
This document is issued in Pulse.			

We reserve all rights in this document and in the information contained therein. Reproduction, distribution, or disclosure of this document without express authority is strictly forbidden.
 © Siemens Industrial Turbomachinery AB



DETAIL A
SUPPORT No. A1 - A6

DETAIL B
SUPPORT No. A7 - A8

DETAIL C
SUPPORT No. D1 - D6

DETAIL D
SUPPORT No. B1, C1 - C8, E1
INCLUDING THE PLATFORMS SUPPORTS, STARS AND PIPE SUPPORTS.

We reserve all rights in this document and in the information contained therein. Reproduction, distribution or use of this document without express authority is strictly forbidden.
 © Siemens Industrial Turbomachinery AB

H	TABLE 2 UPDATED AS DWG 2091814	14-06-30	JF
Rev	Specification	Date	Sign

Created in PDMS PROJECT UGC
 This document is issued in Pulse.

Prepared by G. CLEEVE	Acc. for prod.	In principle conforming to	AS with the same Doc. no. <input type="checkbox"/> yes <input type="checkbox"/> no	Scale N.T.S
Checked by 2012-10-30 Anders Johansson	Respons. dept. OEM12	Archive	Title Foundation general layout Mounting details Oil and gas package	
Approved by 2012-10-30 Stefan Arfvedsson	Date 2012-10-15	Take over dept.	Langu. E	
Latest revision H	Doc. kind LH107	HG/UPS 9100	No. of sh. 4	
SIEMENS			Document No. 2098470	
			Sheet 4	

TYPICAL