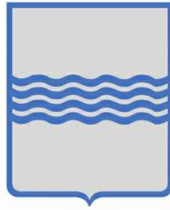


Comune
di Venosa



Regione Basilicata



Comune
di Maschito



Committente:

RWE

RWE RENEWABLES ITALIA S.R.L.
via Andrea Doria, 41/G - 00192 Roma
P.IVA/C.F. 06400370968

Titolo del Progetto:

PARCO EOLICO "VENUSIA"

Documento:

PROGETTO DEFINITIVO

Richiesta Autorizzazione Unica ai sensi del D. Lgs. 387 del 29/09/2003

N° Documento:

PEVE_E_05.5_OR

ID PROGETTO:	PEVE	DISCIPLINA:	P	TIPOLOGIA:	D	FORMATO:	A4
--------------	-------------	-------------	----------	------------	----------	----------	-----------

Elaborato:

Particolari fondazioni CP Melfi Opere di Rete

FOGLIO:	1 di 15	SCALA:	-	Nome file:	PEVE_E_05.5_OR - Particolari fondazioni CP Melfi Opere di Rete.pdf
---------	----------------	--------	----------	------------	---

Progettazione:



TENPROJECT

Sede legale e operativa
San Giorgio del Sannio (BN)
Via De Gasperi, 61 Azienda con
sistema gestione qualità Certificato N.
50 100 11873



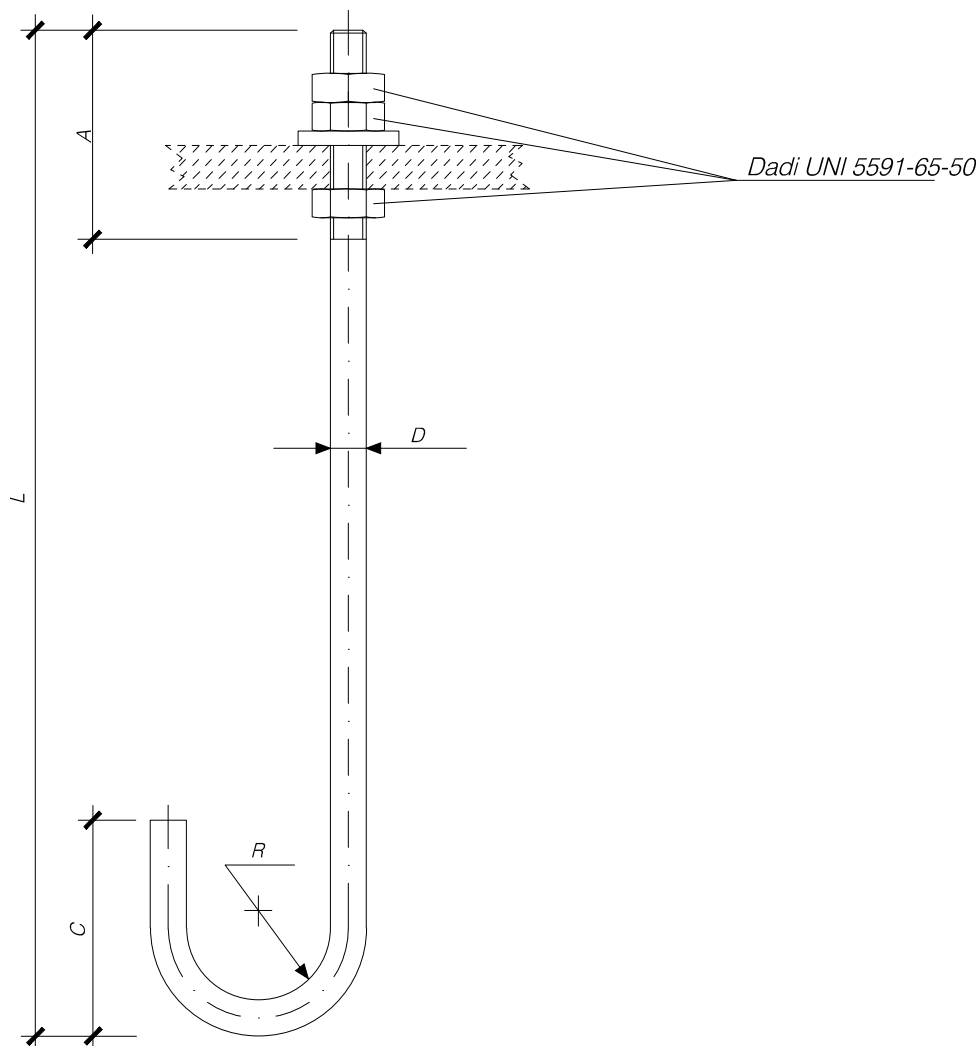
Progettista:

dott. ing. Nicola Forte

Rev:	Data Revisione	Descrizione Revisione	Redatto	Controllato	Approvato
00	06/11/2019	PRIMA EMISSIONE	Ten Project srl - AC	Ten Project srl - MO	RWE

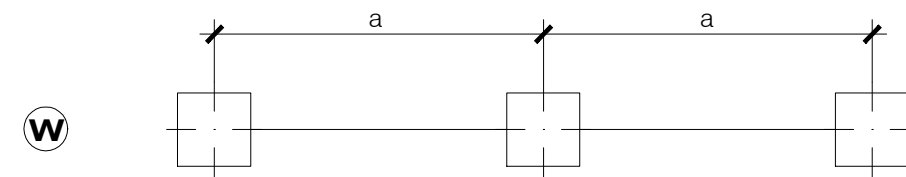
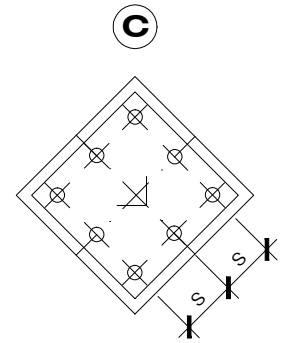
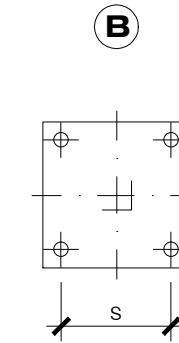
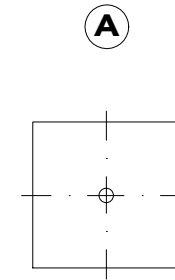
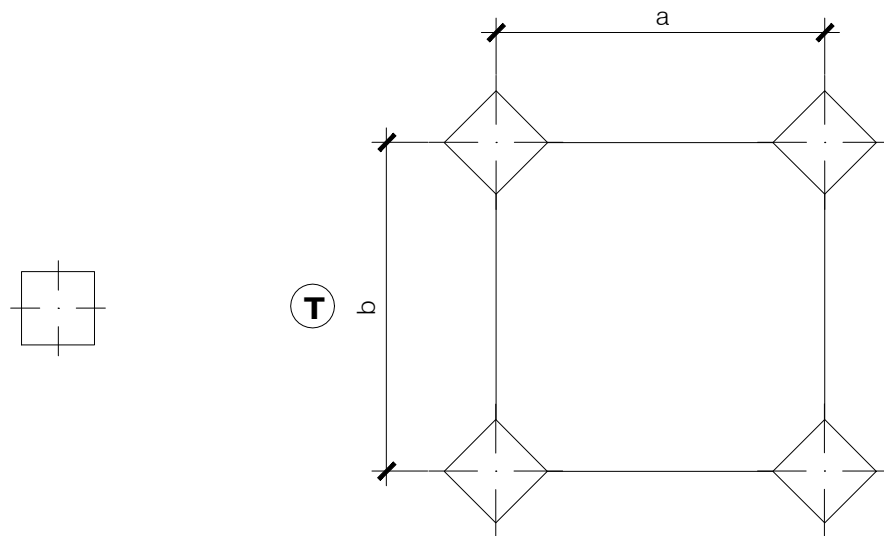
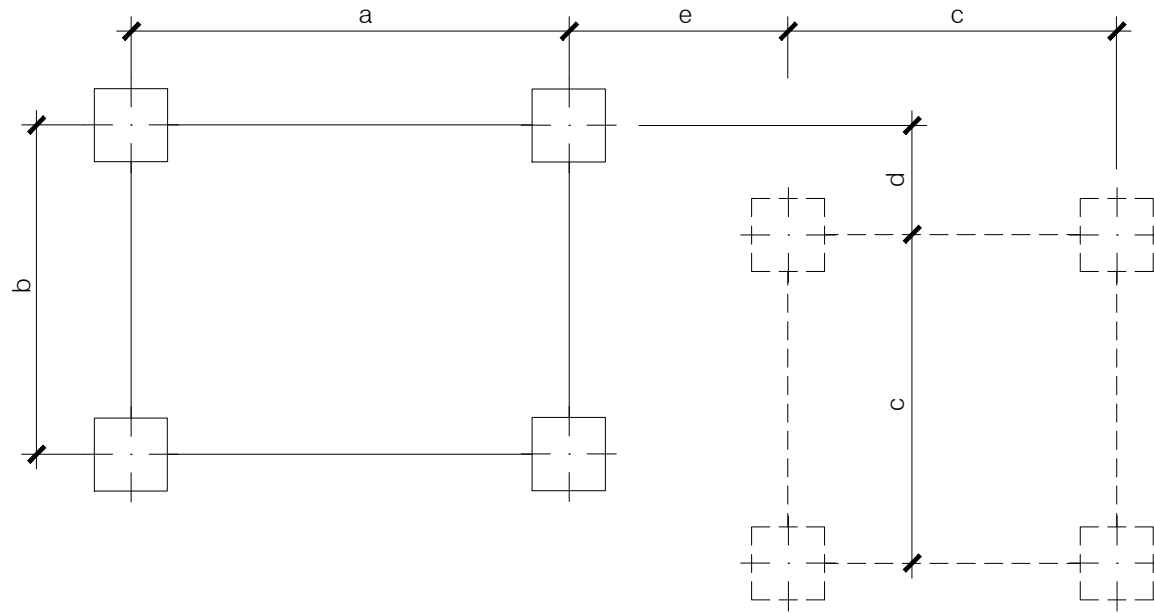
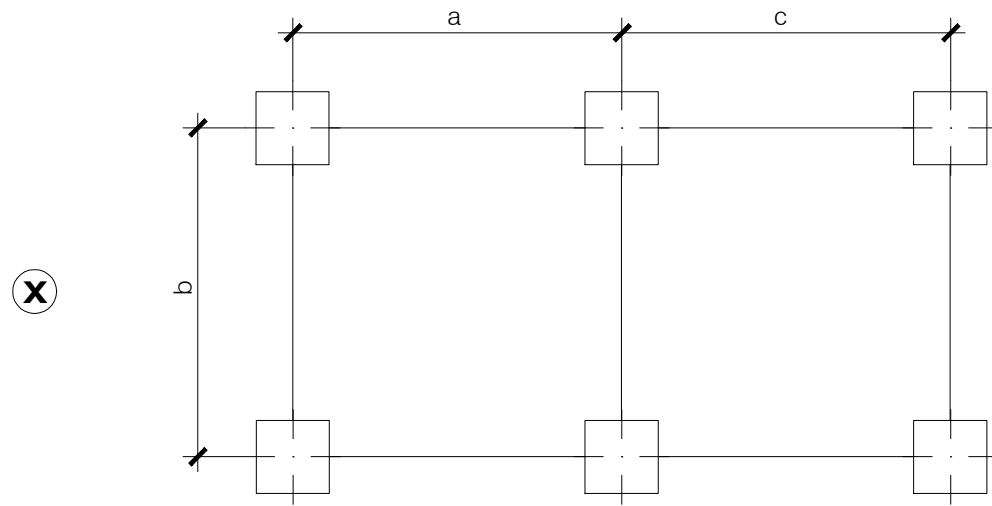
UNIFICAZIONE**CABINE PRIMARIE - IMPIANTI DI POTENZA 132 - 150 kV****TIRAFONDI PER IMPIEGHI NORMALI****DS6100****Ed. - 01 / 96**

DIREZIONE DELLA DISTRIBUZIONE - UNITA' TECNICA SISTEMI E COMPONENTI



MATRICOLA	RIF.	DIMENSIONI mm.					TAGLIO mm.	ROSETTA mm.		
		D	L	A	C	R		Ø i	Ø e	s
22 16 33	6100/2	20	330	135	130	50	510	22	37	10
22 16 34	6100/3	18	930	120	120	45	1150	20	34	8
22 16 35	6100/4	24	1020	160	160	60	1235	26	44	12
22 16 37	6100/5	33	1435	235	300	66	1796	35	70	10
22 16 30	6100/6	12	180	75	75	30	290	14	24	6
22 16 31	6100/7	16	330	110	110	40	470	18	30	8
	6100/8	24	380	120	120	60	560	26	44	12

Materiale: Fe 52B zincato a caldo solo per la parte filettata



RIF.	DIME		PIASTRE PER DIMA		DIMENSIONE m.						TIRAFONDI	
	TIPO	N.	TIPO	N.	s	a	b	c	d	e	RIF.	N.
708/2	X	6	A	3	-	0,50	0,00	1,50	-	-	S6102	6
708/3	Y	3	A	4	-	0,50	0,50	0,40	0,30	1,25	S6100/2 S6100/7	8 4
708/4	Z	1	B	1	0,40	-	-	-	-	-	S6100/3	4
708/5	Z	1	B	1	0,40	-	-	-	-	-	S6100/4	4
708/7	T	1	C	4	0,15	2,542	2,542	-	-	-	S6100/5	32
708/8	Y	1	A	4	-	0,36	0,21	-	-	-	S6100/6	4
708/9	W	1	B	3	0,50	2,20	-	-	-	-	S6100/8	12
1/1	Y	1	B	4	0,30	1,069	1,069	0,00	0,00	0,00	H/8	16

UNIFICAZIONE



CABINE PRIMARIE - IMPIANTI DI POTENZA 132 - 150 kV

FONDAZIONE PER SOSTEGNO TRIPOLARE

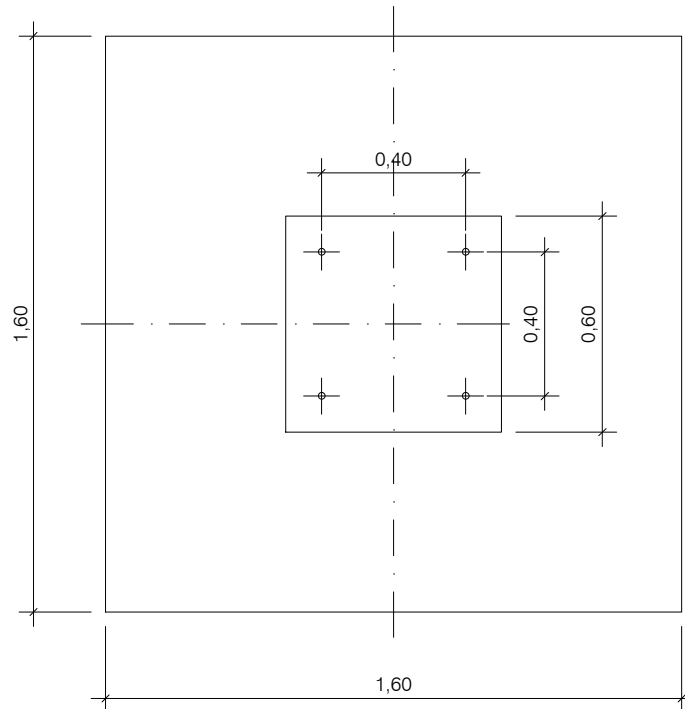
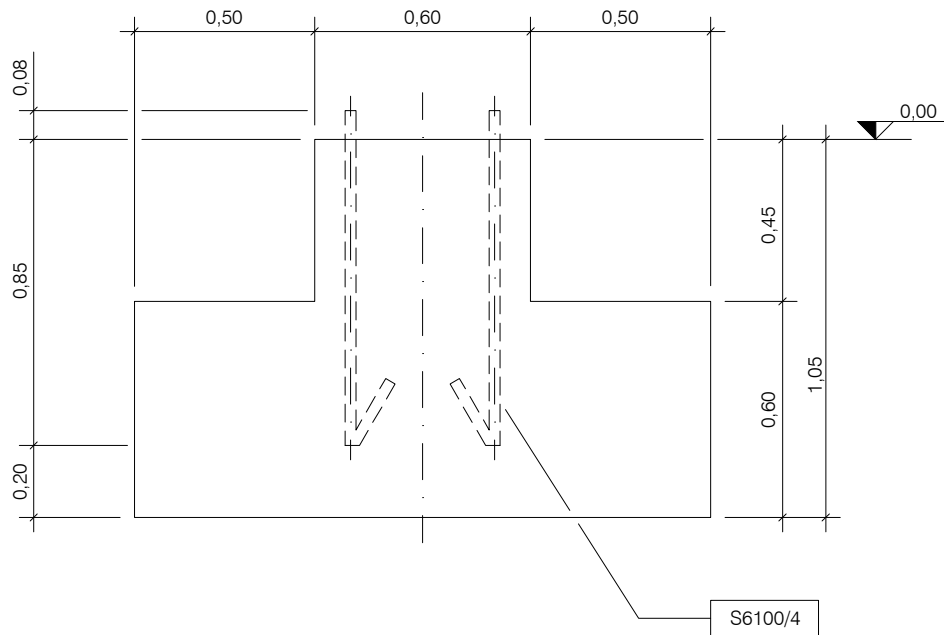
Scala = 1 : 20

DG96

Ed. - 01 / 96

MODIFICATO

DIREZIONE DELLA DISTRIBUZIONE - UNITA' TECNICA SISTEMI E COMPONENTI



RIF.	VOLUME CALCESTRUZZO m ³	TIRAFONDI	
		RIF.	N.
96	1,70	S6100/4	4

CALCESTRUZZO CLASSE RCK 300
Riferimento Y96, dime G708/5

UNIFICAZIONE



CABINE PRIMARIE - IMPIANTI DI POTENZA 132 - 150 kV

FONDAZIONE PER APPARECCHIATURA UNIPOLARE

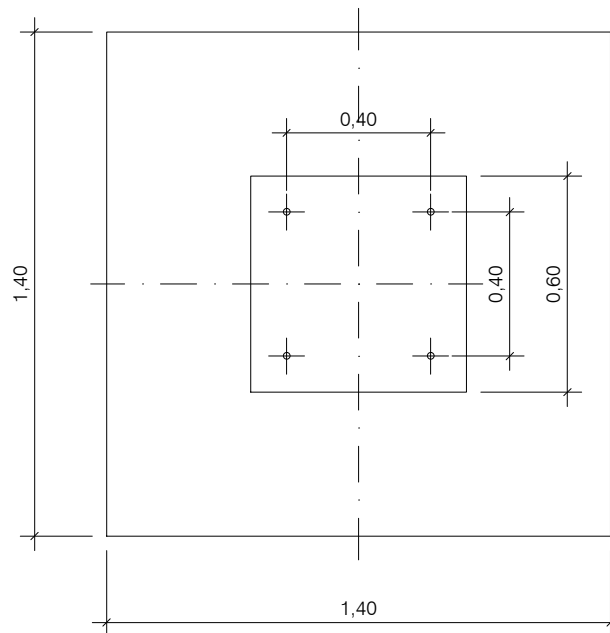
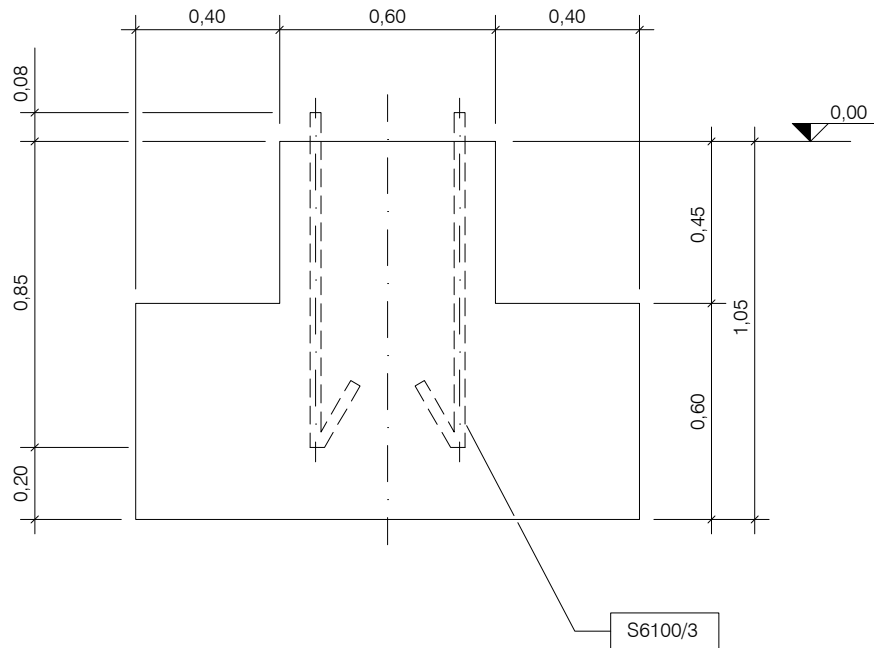
Scala = 1 : 20

DG44

Ed. - 01 / 96

MODIFICATO

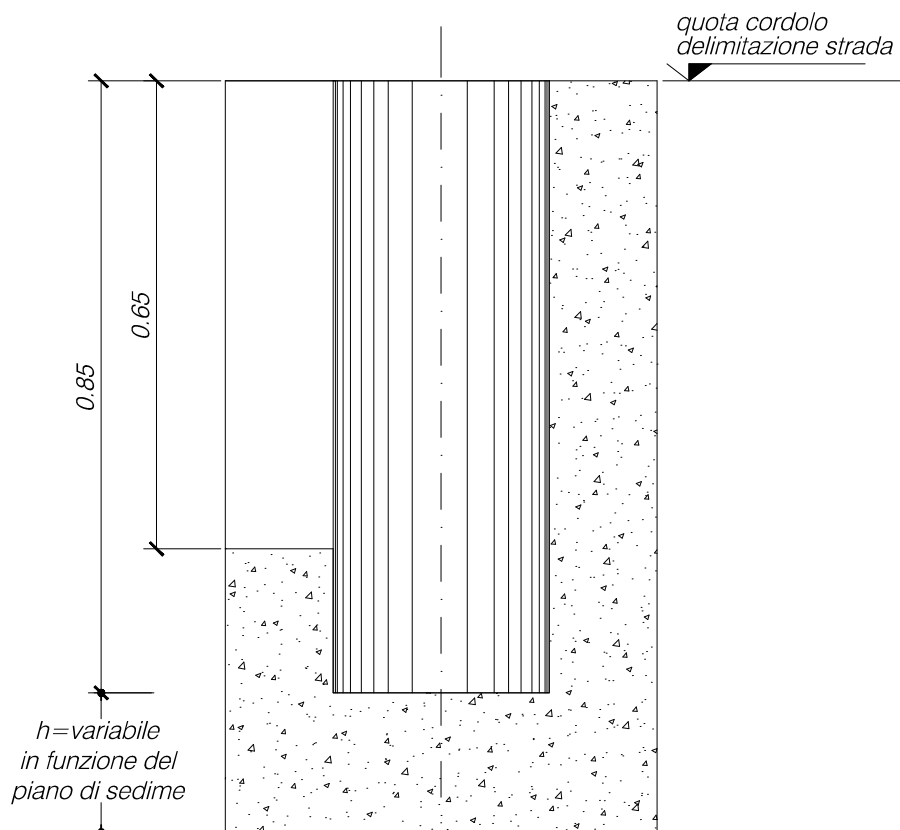
DIREZIONE DELLA DISTRIBUZIONE - UNITA' TECNICA SISTEMI E COMPONENTI



RIF.	VOLUME CALCESTRUZZO m ³	TIRAFONDI	
		RIF.	N.
44	1,34	S6100/3	4

CALCESTRUZZO CLASSE RCK 300
Riferimento Y44, Y46, Y54, Y55, G708/4

Sez. A-A



Pianta

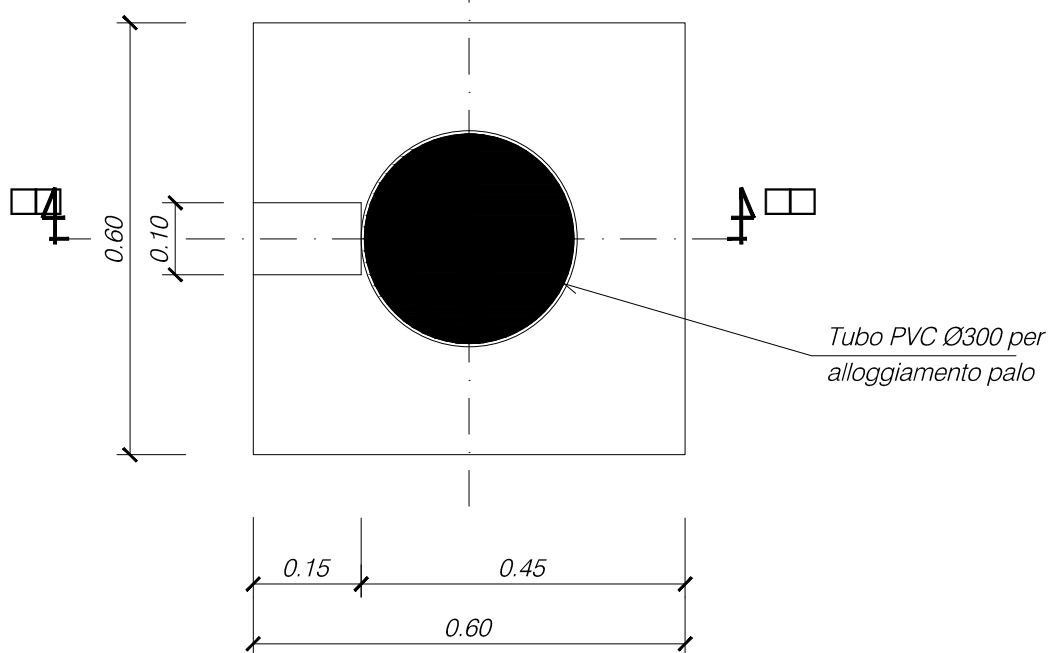
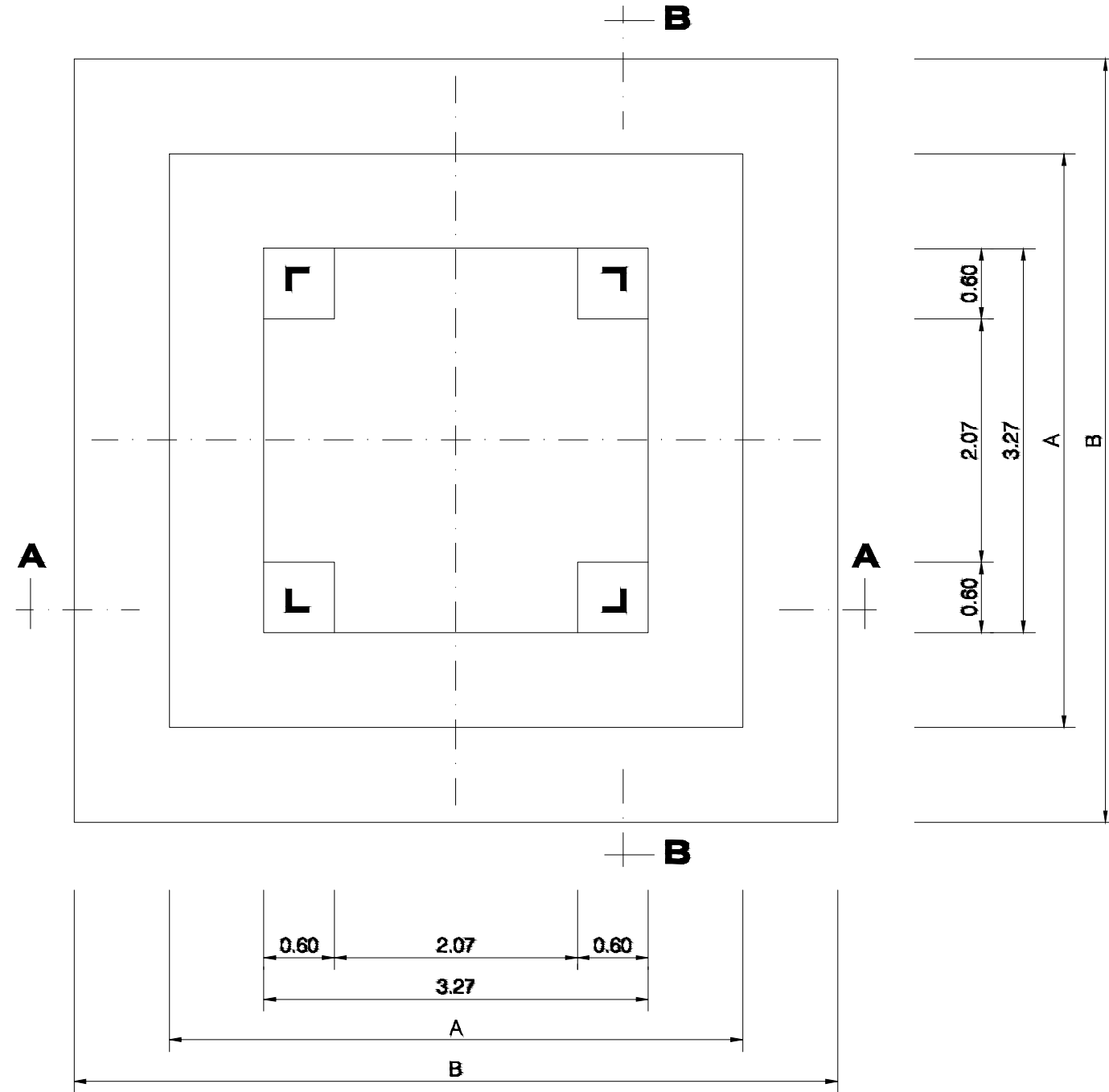
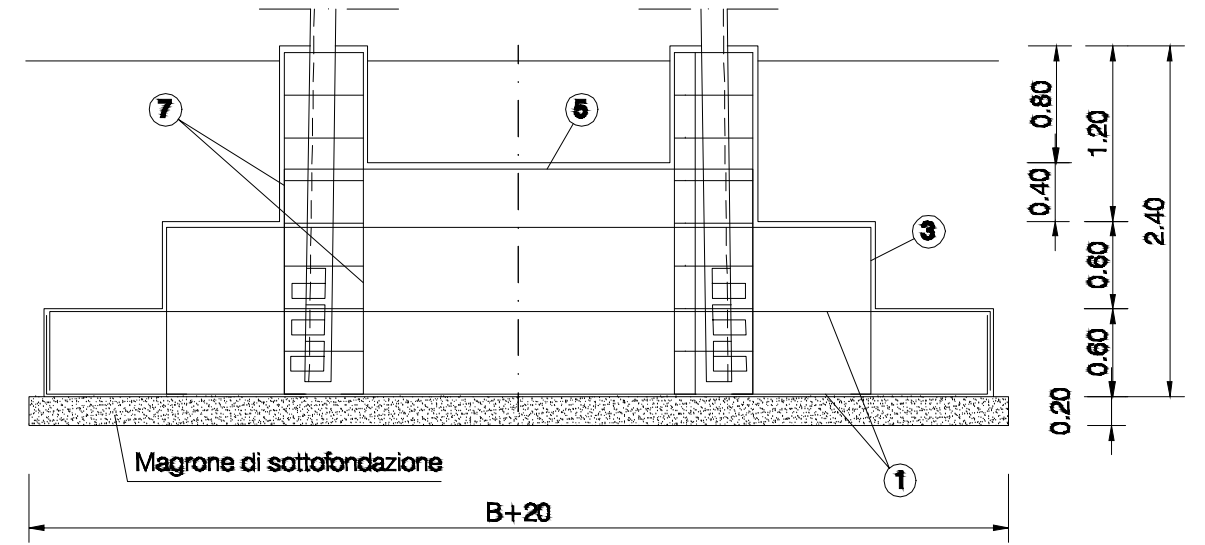


Tabella dati caratteristici

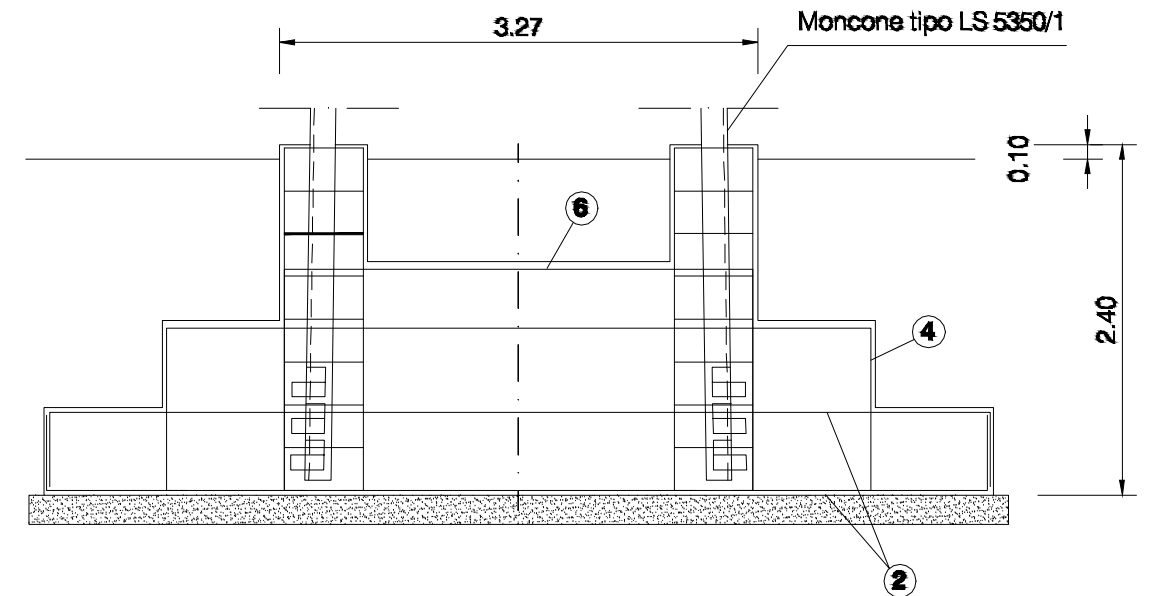
Tipo	1014/13	1014/14	1014/15	1014/16	1014/17
	Sollecitazioni ammesse dal terreno σ_{t} Da N/cm ²				
	0,80-1,00	1,25	1,50	2,00	2,50
Lato "A" (m)	5,23	5,03	4,88	4,68	4,63
Lato "B" (m)	7,20	6,80	6,50	6,10	6,00
Magrone di sottofondazione Rbk (m ³)	10,95	9,80	9,00	7,94	7,69
Calcestruzzo classe Rbk 300 (m ³)	52,94	48,35	45,07	40,90	39,90
Peso ferro per c.a. tipo FeB 38 K (Kg)	1858	1804	1675	1575	1495



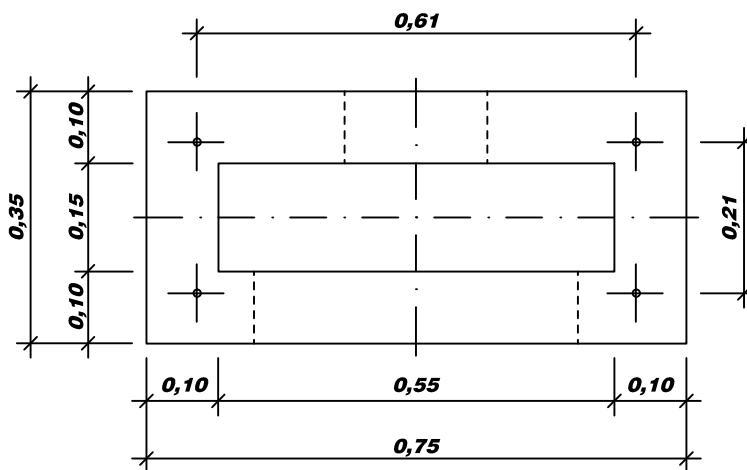
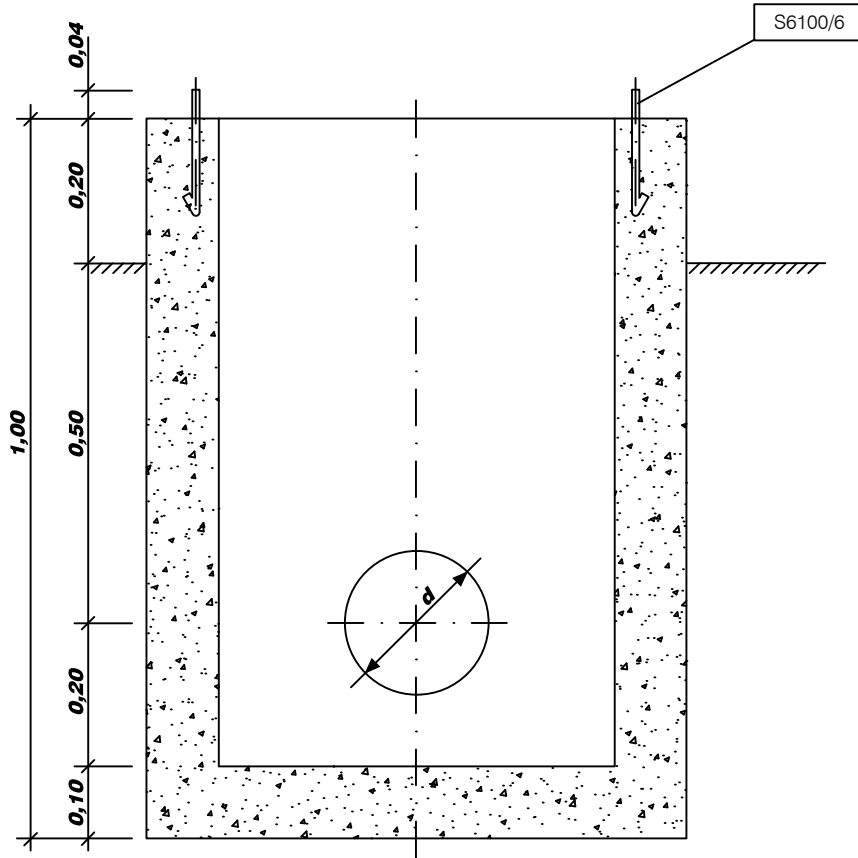
Sez A-A



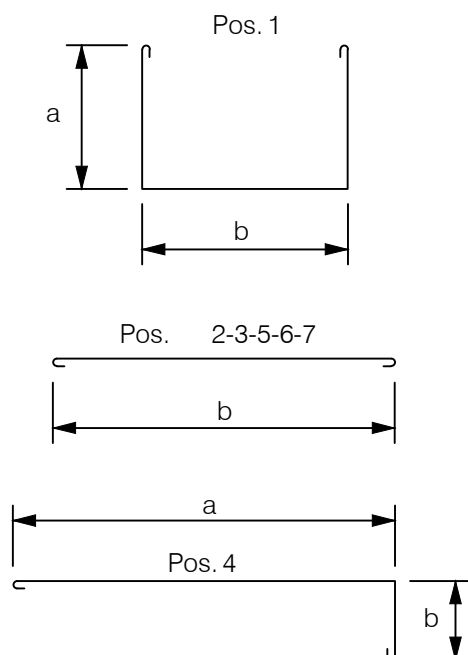
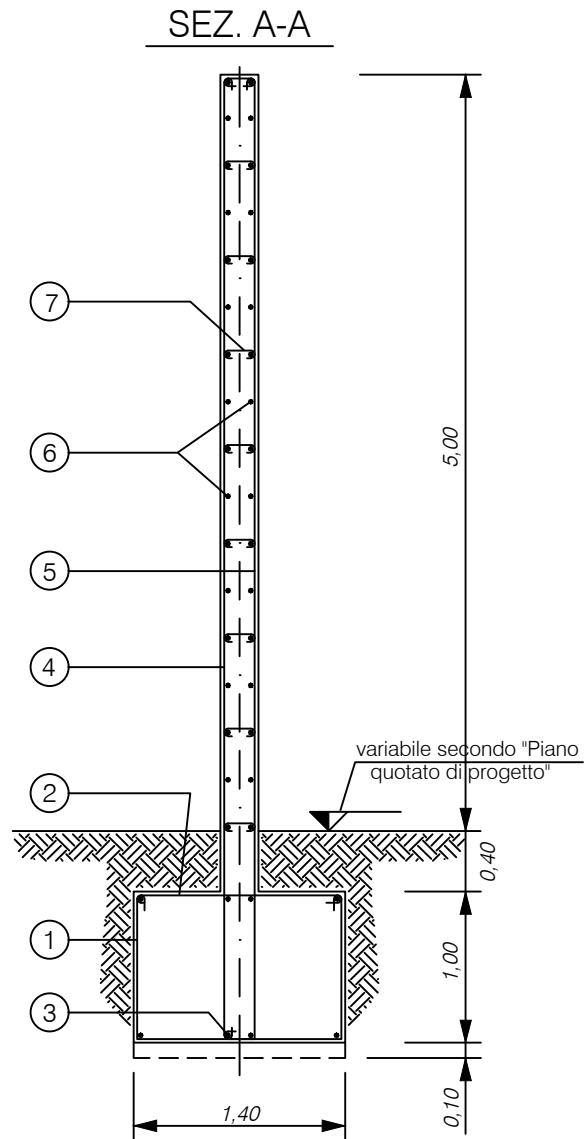
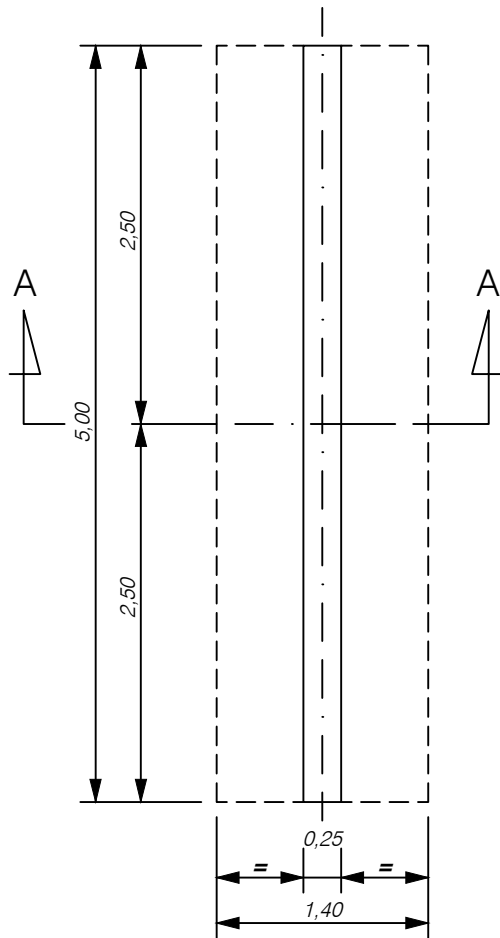
Sez B-B



DIREZIONE DELLA DISTRIBUZIONE - UNITA' TECNICA SISTEMI E COMPONENTI



RIF.	VOLUME CALCESTRUZZO m ³	TIRAFONDI	
		RIF.	N.
1912	0,21	S6100/6	4

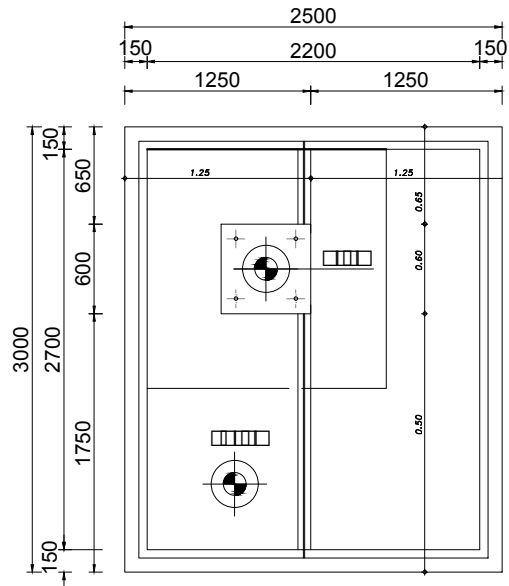


POS.	N.	Ø	a m	b m	Taglio m	Peso Kg
1	16	12	0,95	1,35	3,49	49,58
2	16	12	-	1,35	1,59	22,59
3	8	10	-	4,95	5,15	25,42
4	16	12	6,35	0,20	6,79	96,47
5	16	12	-	6,15	6,39	90,79
6	36	8	-	4,95	5,11	72,66
7	128	6	-	0,20	0,32	9,09

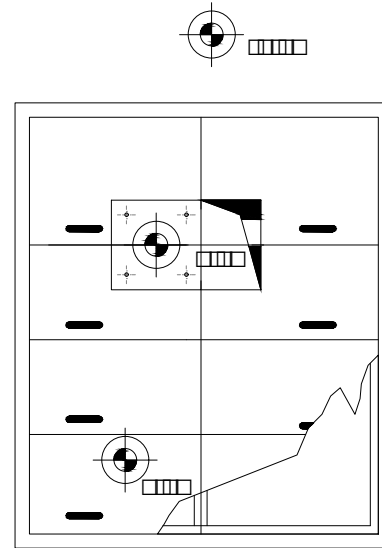
Ferri di armatura Fe B44K
 Calcestruzzo di classe RCK30
 Volume calcestruzzo m³ 13,75

APPARECCHIATURA	TIPO DI FONDAZIONE
FONDAZIONE SOSTEGNO USCITA TR	DG 97

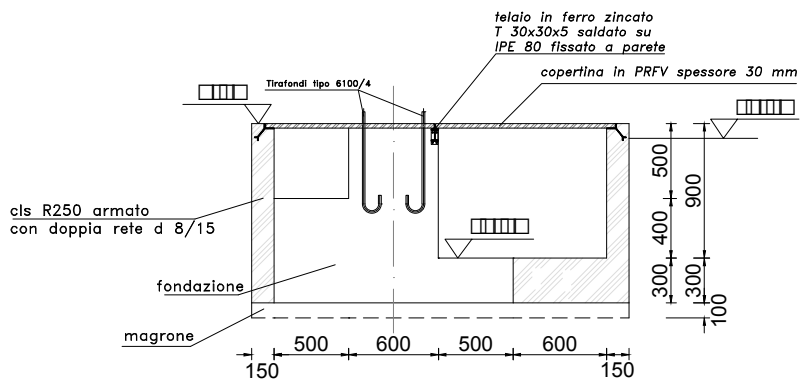
Pianta pareti



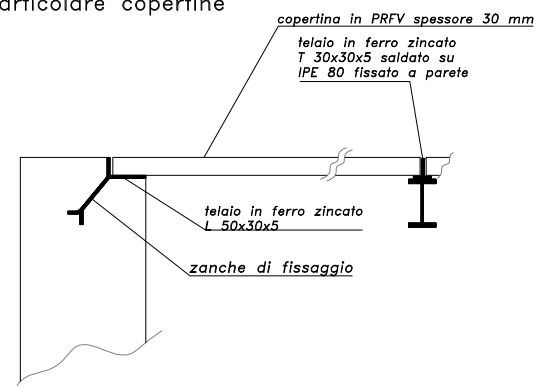
Pianta copertine



Sezione trasversale

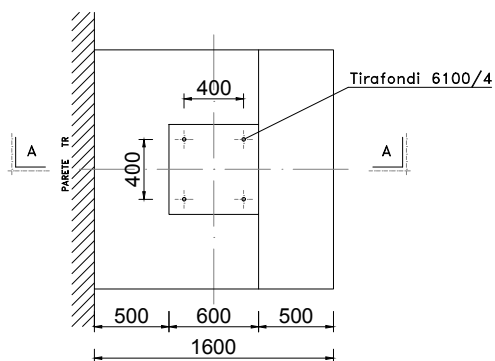


Particolare copertine

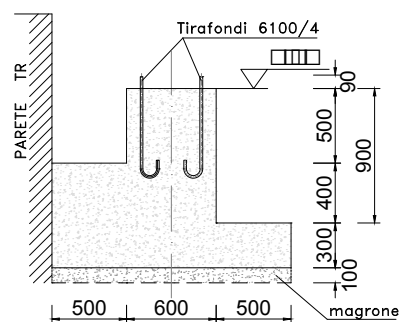


N.B. il telaio perimetrale può essere sostituito da altro similare equipesante che non modifichi la dimensione della copertina e le dimensioni complessive del telaio.

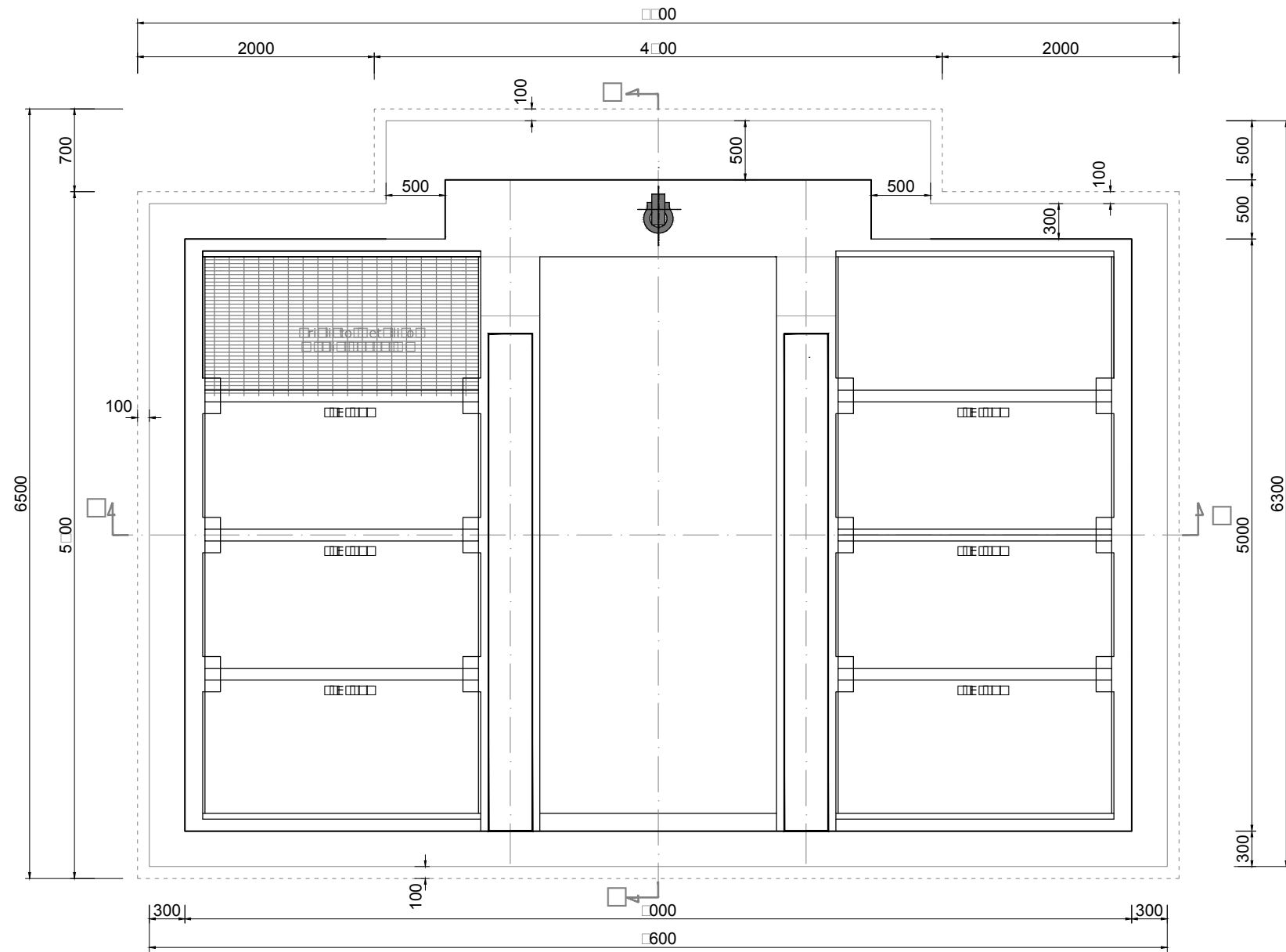
Pianta



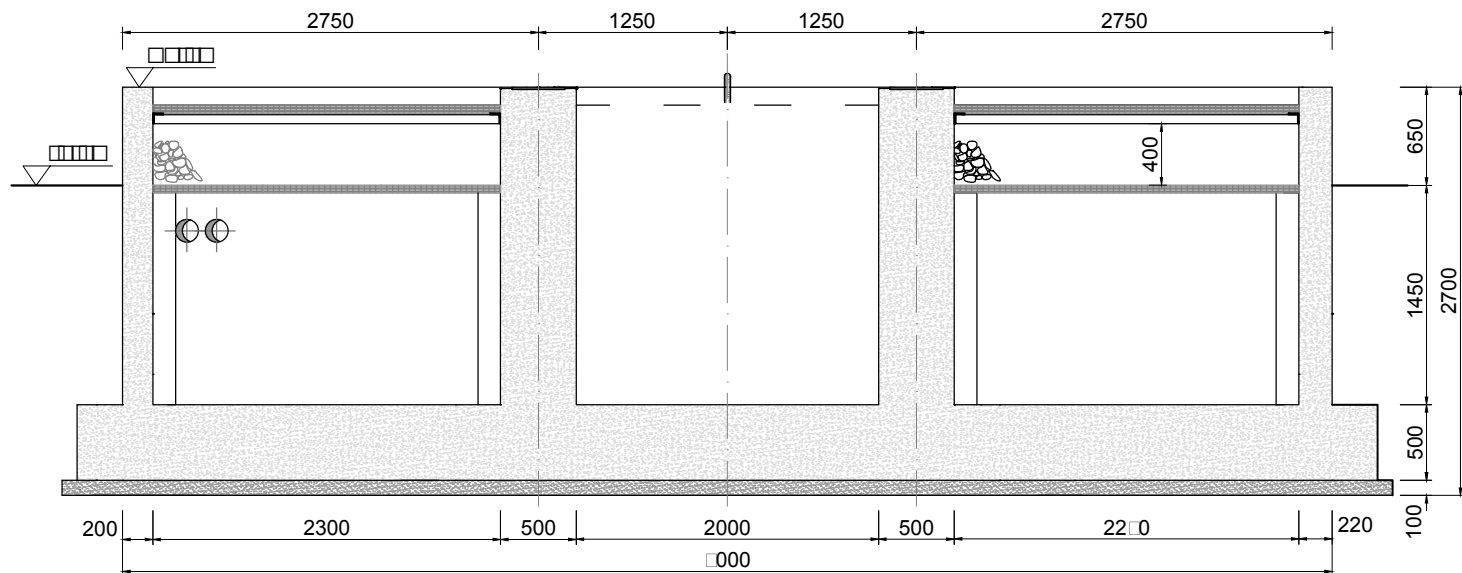
Sezione A-A



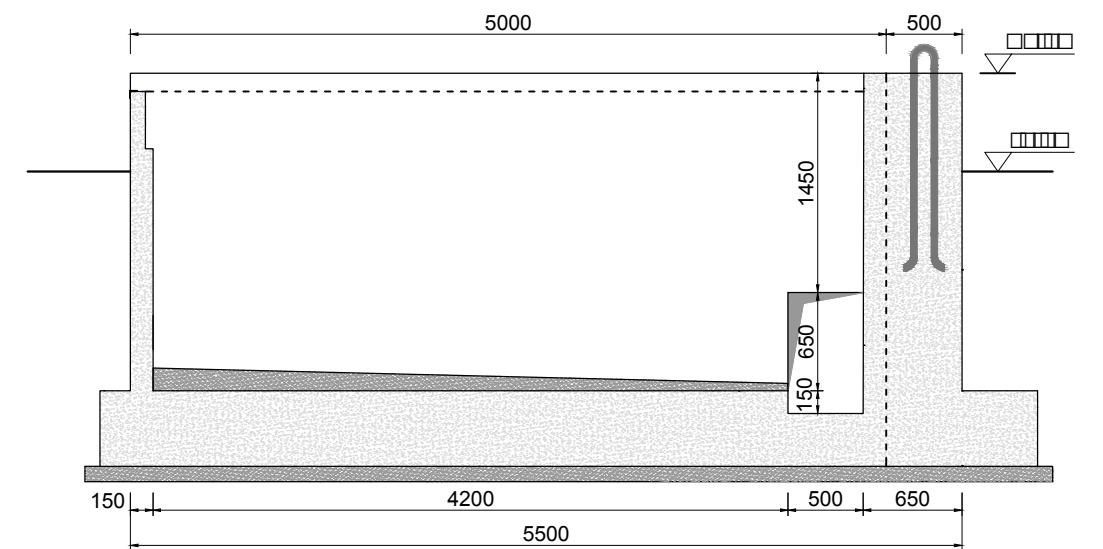
PIANTA FONDAZIONE TR AT/MT - SCALA 1:50



SEZIONE A-A FONDAZIONE TR AT/MT



SEZIONE B-B FONDAZIONE TR AT/MT



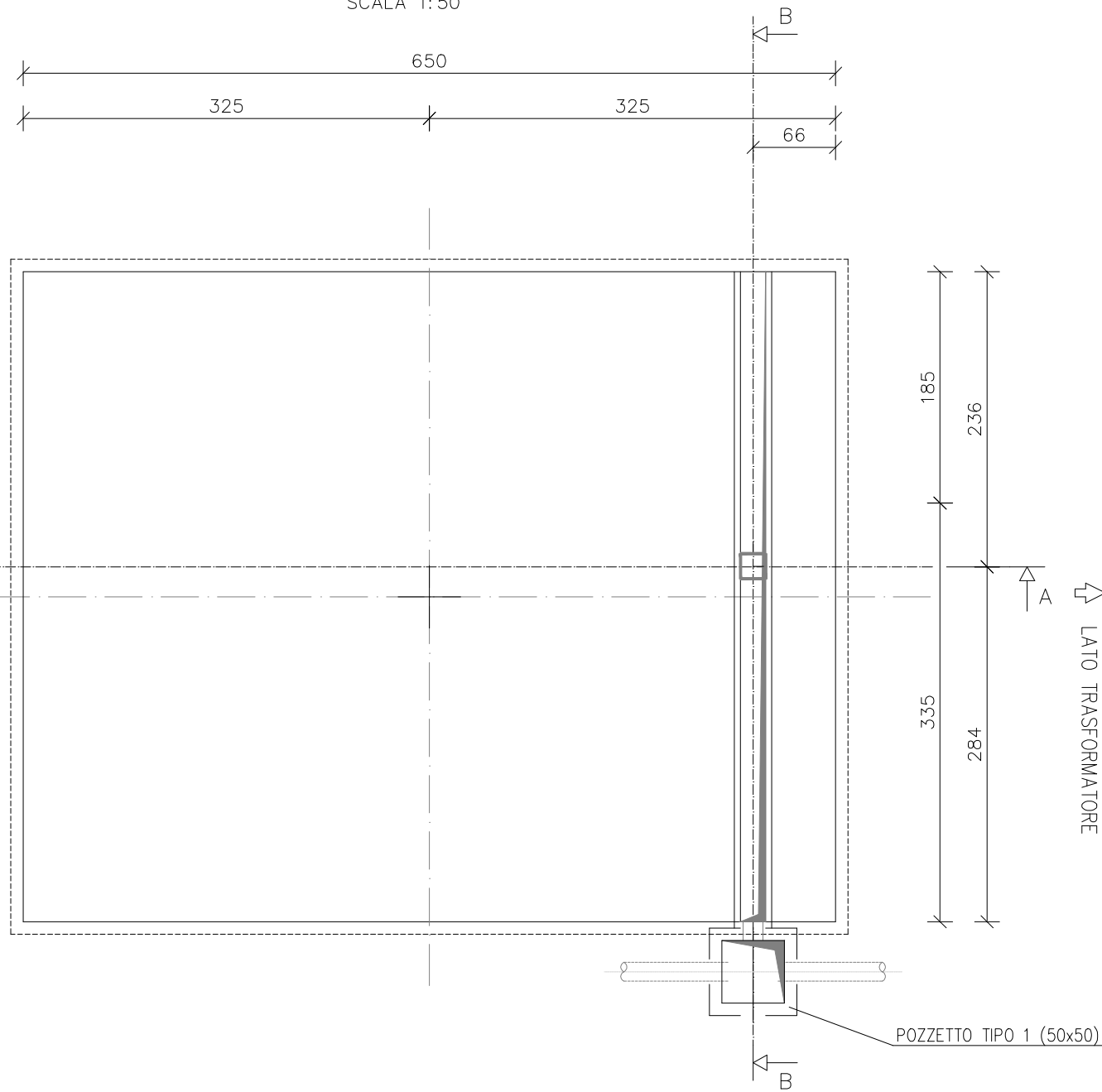
BASAMENTO DI FONDAZIONE PER MODULI A.T. IBRIDI AD
"Y"

SCALA 1:50
BG57

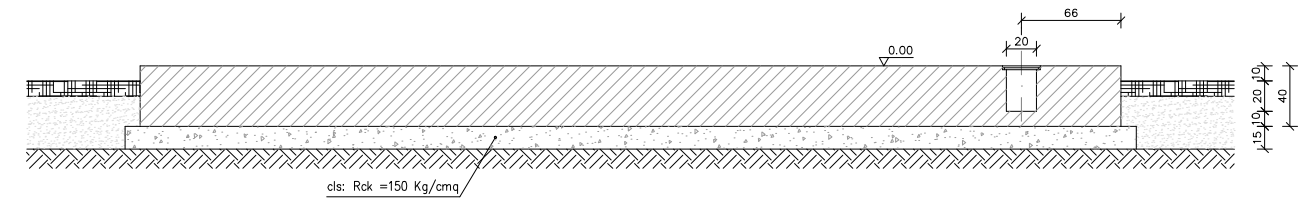
PRESCRIZIONI:

cls: Rck= 300 Kg/cm²
acciaio: FeB 44K $\frac{f_y}{f_{yk}} \leq 1.35$ $\left(\frac{f_t}{f_y}\right)_{medio} \geq 1.13$

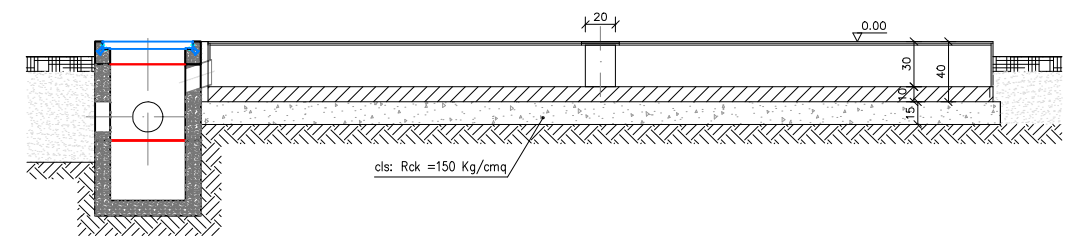
PIANTA
SCALA 1:50

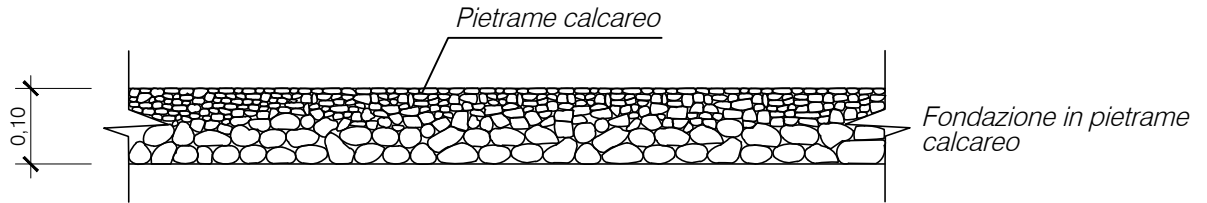


SEZIONE A-A
SCALA 1:50

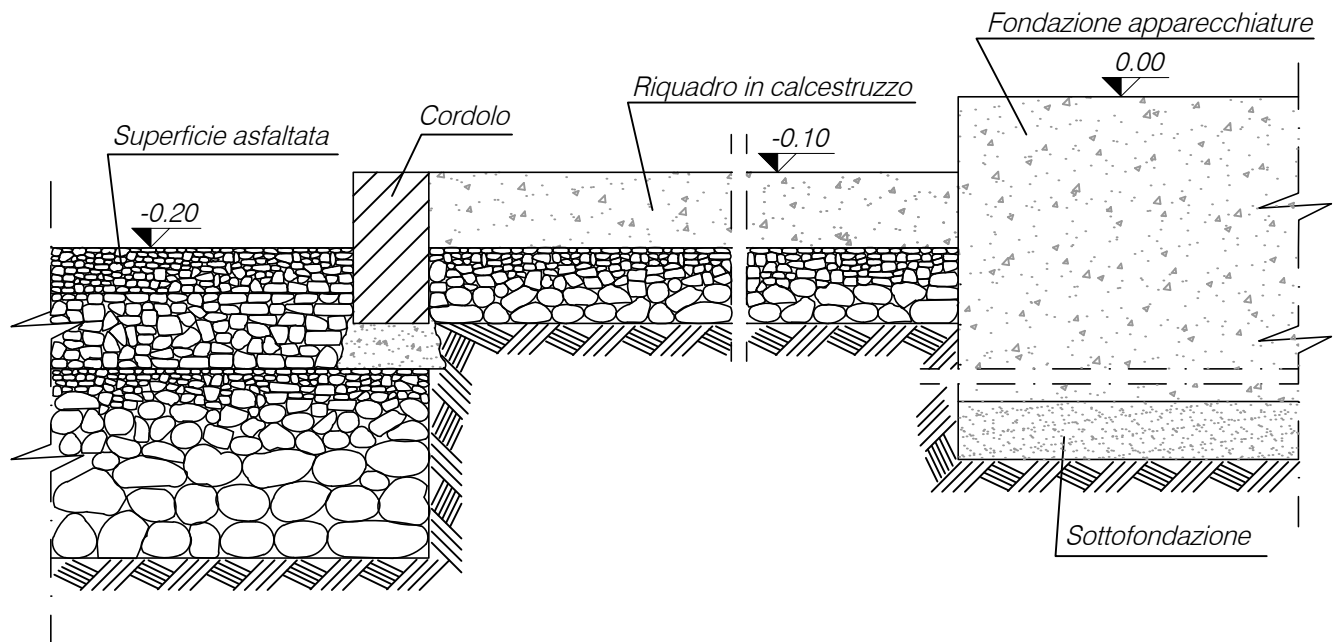
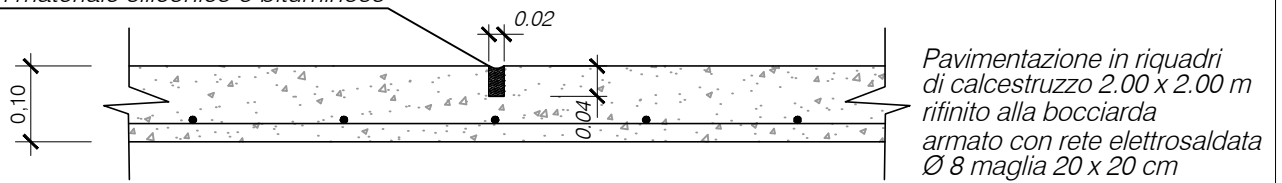


SEZIONE B-B
SCALA 1:50

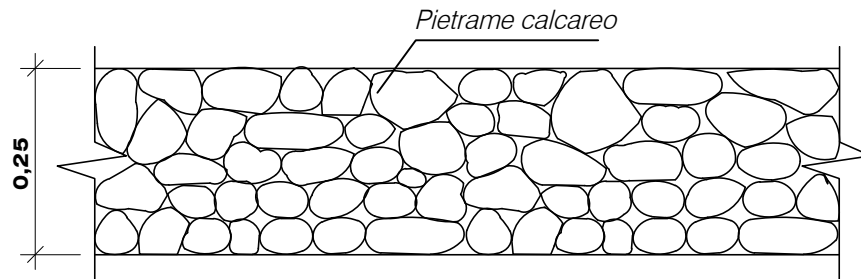




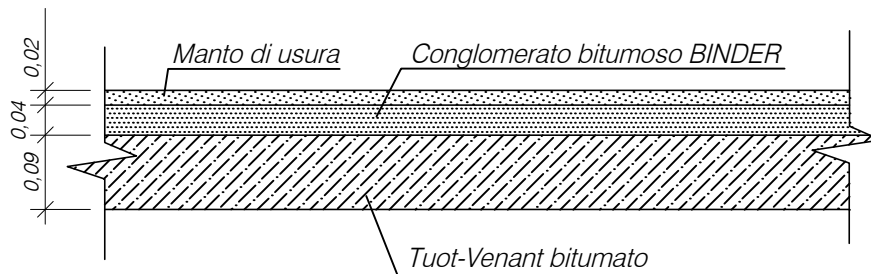
Giunto di dilatazione sigillato
con materiale siliconico o bituminoso



FONDAZIONE IN PIETRAMME CALCAREO



PAVIMENTAZIONE IN CONGLOMERATO BITUMOSO



UNIFICAZIONE

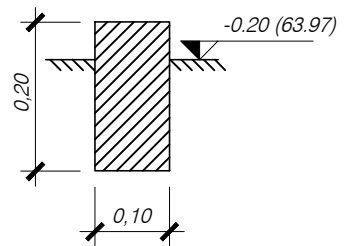
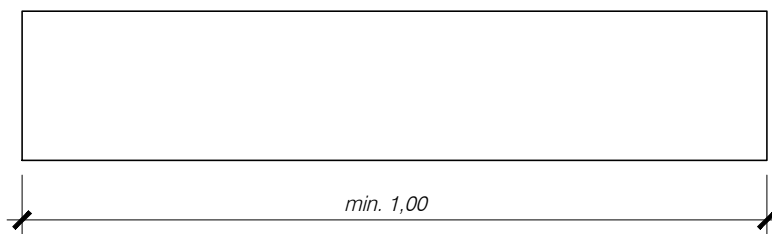
CABINE PRIMARIE - IMPIANTI DI POTENZA 132 - 150 kV



CORDOLO PER DELIMITAZIONE ZONA PRATO

DG3608

Ed. -



RIF.	VOLUME m ³
3608	0,02

- I cordoli dovranno essere in travertino o pietra naturale reperibile in zona, oppure in calcestruzzo prefabbricato. La lunghezza degli elementi sarà di tipo commerciale e comunque non inferiore ad 1m.