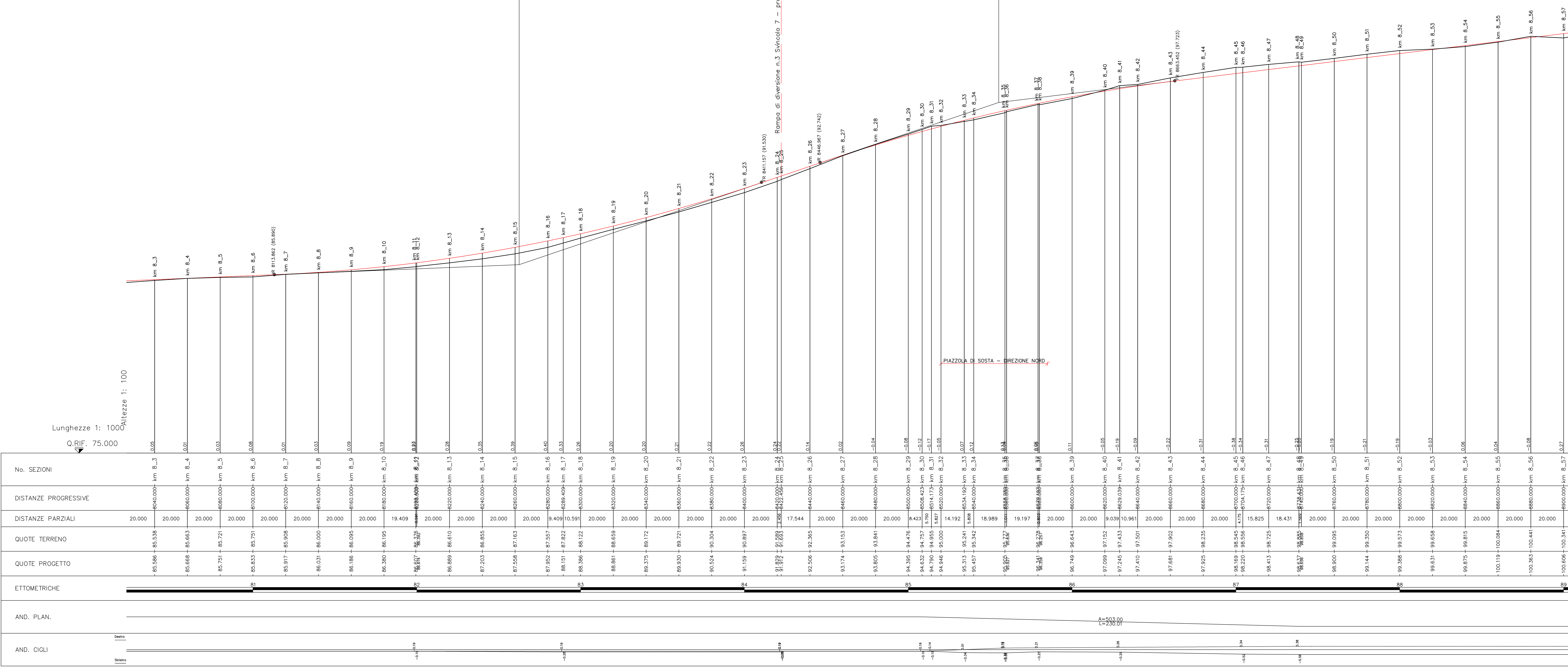
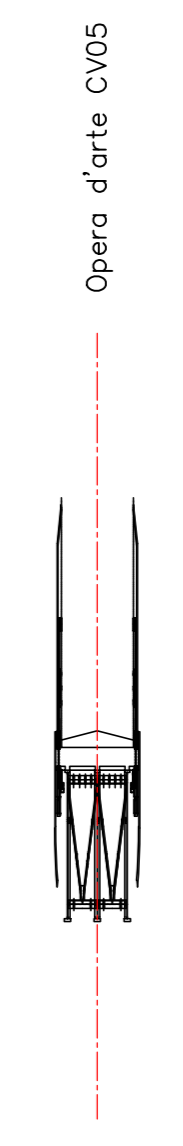


PROG	16
Q	822.510
	86.500
R	10000.000
T1	148.649
T2	148.733
BS	1.105
SV	297.295
DP	2.972954

PROG	17
Q	855.209
	96.404
R	10000.000
T1	108.304
T2	108.255
BS	0.586
SV	216.485
DP	-2.164854

SVINCOLO N.7 SCORRANO SUD



No. SEZIONI	DISTANZE PROGRESSIVE	DISTANZE PARZIALI	QUOTE TERRENO	QUOTE PROGETTO	ETOMETRICHE
km 8_3	0+000 - km 8_3	20,000	-85,986	-85,538	81
km 8_4	0+000 - km 8_4	20,000	-85,688	-85,663	81
km 8_5	0+000 - km 8_5	20,000	-85,751	-85,721	81
km 8_6	0+000 - km 8_6	20,000	-85,833	-85,751	81
km 8_7	0+000 - km 8_7	20,000	-85,917	-85,808	81
km 8_8	0+000 - km 8_8	20,000	-86,031	-86,000	81
km 8_9	0+000 - km 8_9	20,000	-86,186	-86,095	81
km 8_10	0+000 - km 8_10	20,000	-86,380	-86,195	81
km 8_11	0+000 - km 8_11	19,409	-86,617	-86,327	81
km 8_12	0+000 - km 8_12	20,000	-86,889	-86,610	81
km 8_13	0+000 - km 8_13	20,000	-87,203	-86,845	81
km 8_14	0+000 - km 8_14	20,000	-87,558	-87,163	81
km 8_15	0+000 - km 8_15	20,000	-87,952	-87,557	81
km 8_16	0+000 - km 8_16	20,000	-88,381	-87,982	81
km 8_17	0+000 - km 8_17	20,000	-88,841	-88,422	81
km 8_18	0+000 - km 8_18	20,000	-89,336	-88,922	81
km 8_19	0+000 - km 8_19	20,000	-89,861	-89,439	81
km 8_20	0+000 - km 8_20	20,000	-90,416	-89,999	81
km 8_21	0+000 - km 8_21	20,000	-90,999	-90,577	81
km 8_22	0+000 - km 8_22	20,000	-91,608	-91,180	81
km 8_23	0+000 - km 8_23	20,000	-92,241	-91,801	81
km 8_24	0+000 - km 8_24	17,544	-92,896	-92,444	81
km 8_25	0+000 - km 8_25	20,000	-93,574	-93,103	81
km 8_26	0+000 - km 8_26	20,000	-94,273	-93,804	81
km 8_27	0+000 - km 8_27	20,000	-94,995	-94,476	81
km 8_28	0+000 - km 8_28	20,000	-95,739	-95,192	81
km 8_29	0+000 - km 8_29	20,000	-96,505	-95,945	81
km 8_30	0+000 - km 8_30	20,000	-97,294	-96,716	81
km 8_31	0+000 - km 8_31	20,000	-98,104	-97,506	81
km 8_32	0+000 - km 8_32	20,000	-98,935	-98,317	81
km 8_33	0+000 - km 8_33	20,000	-99,786	-99,148	81
km 8_34	0+000 - km 8_34	20,000	-100,657	-100,009	81
km 8_35	0+000 - km 8_35	20,000	-101,547	-100,899	81
km 8_36	0+000 - km 8_36	20,000	-102,456	-101,808	81
km 8_37	0+000 - km 8_37	20,000	-103,384	-102,736	81
km 8_38	0+000 - km 8_38	20,000	-104,331	-103,683	81
km 8_39	0+000 - km 8_39	20,000	-105,296	-104,648	81
km 8_40	0+000 - km 8_40	20,000	-106,279	-105,631	81
km 8_41	0+000 - km 8_41	20,000	-107,279	-106,631	81
km 8_42	0+000 - km 8_42	20,000	-108,295	-107,647	81
km 8_43	0+000 - km 8_43	20,000	-109,326	-108,678	81
km 8_44	0+000 - km 8_44	20,000	-110,371	-109,723	81
km 8_45	0+000 - km 8_45	20,000	-111,429	-110,791	81
km 8_46	0+000 - km 8_46	20,000	-112,500	-111,872	81
km 8_47	0+000 - km 8_47	20,000	-113,583	-112,965	81
km 8_48	0+000 - km 8_48	20,000	-114,678	-114,070	81
km 8_49	0+000 - km 8_49	20,000	-115,784	-115,186	81
km 8_50	0+000 - km 8_50	20,000	-116,899	-116,311	81
km 8_51	0+000 - km 8_51	20,000	-118,024	-117,446	81
km 8_52	0+000 - km 8_52	20,000	-119,158	-118,590	81
km 8_53	0+000 - km 8_53	20,000	-120,300	-119,742	81
km 8_54	0+000 - km 8_54	20,000	-121,450	-120,901	81
km 8_55	0+000 - km 8_55	20,000	-122,607	-122,068	81
km 8_56	0+000 - km 8_56	20,000	-123,771	-123,242	81
km 8_57	0+000 - km 8_57	20,000	-124,941	-124,422	81

Sanas
GRUPPO FS ITALIANE

Corridoio Plurimodale Adriatico
 ITINERARIO MAGLIE - SANTA MARIA DI LEUCA
 S.S. N° 275 "DI S. MARIA DI LEUCA"
 LAVORI DI AMMODERNAMENTO E ADEGUAMENTO ALLA SEZ. B DEL D.M. 5.11.2001
 1° Lotto: Dal Km 0+000 di prog. al Km 23+300 di prog.

PROGETTO DEFINITIVO COD. BA283

PROGETTAZIONE: ARNAS - COORDINAMENTO TERRITORIALE ARMATICA		ATTIVITA' DI SUPPORTO
I. PROGETTISTI Ing. Alberto SANCHEZ - Progettista e Coordinatore Ing. Simone MASCIULLO - Progettista	COLLABORATORI Geom. Andrea DELL'ANNA Geom. Massimo MASTRO Geom. Giuseppe CALZ'	
II. COORDINATORE DELLA SICUREZZA IN FASE DI PROGETTAZIONE Ing. Alberto SANCHEZ		Traccista
III. RESPONSABILE DEL PROCEDIMENTO Ing. Gianfranco PAGLIARUSA		RESPONSABILE PROJECT MANAGEMENT PUGLIA Ing. Nicola MAND'

PROGETTO STRADALE
ASSE PRINCIPALE
 PROFILO LONGITUDINALE - TAVOLA 11 - DA Pr 8+060 A Pr 8+860

CODICE PROGETTO PROGETTO: 10503A LIV. PROG. N. PROG.: 01701	NOME FILE P00_PS00_TRA_FP11_B.dwg CODICE ELAB.: P00P000TRAF11	REVISIONE B	SCALA: 1:1000/100
--------------------------------------------------------------------------------	----------------------------------------------------------------------------	-----------------------	----------------------

B	REVISIONE DEL PROGETTO DEFINITIVO DEL 2017	Giugno 2018		
A	REVISIONE DEL PROGETTO DEFINITIVO	Novembre 2017		
REV.	DESCRIZIONE	DATA	REDATTO	VERIFICATO APPROVATO