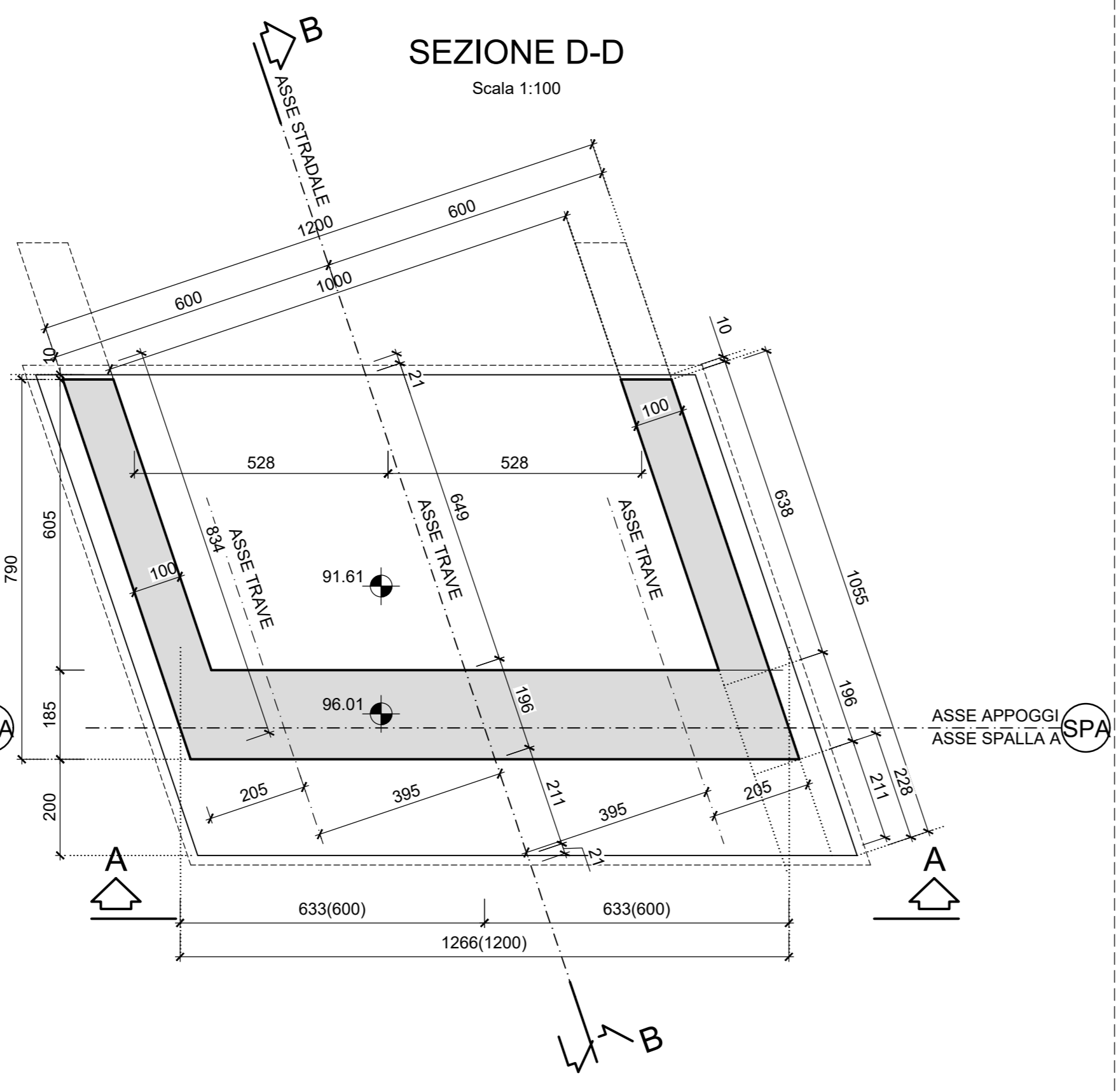
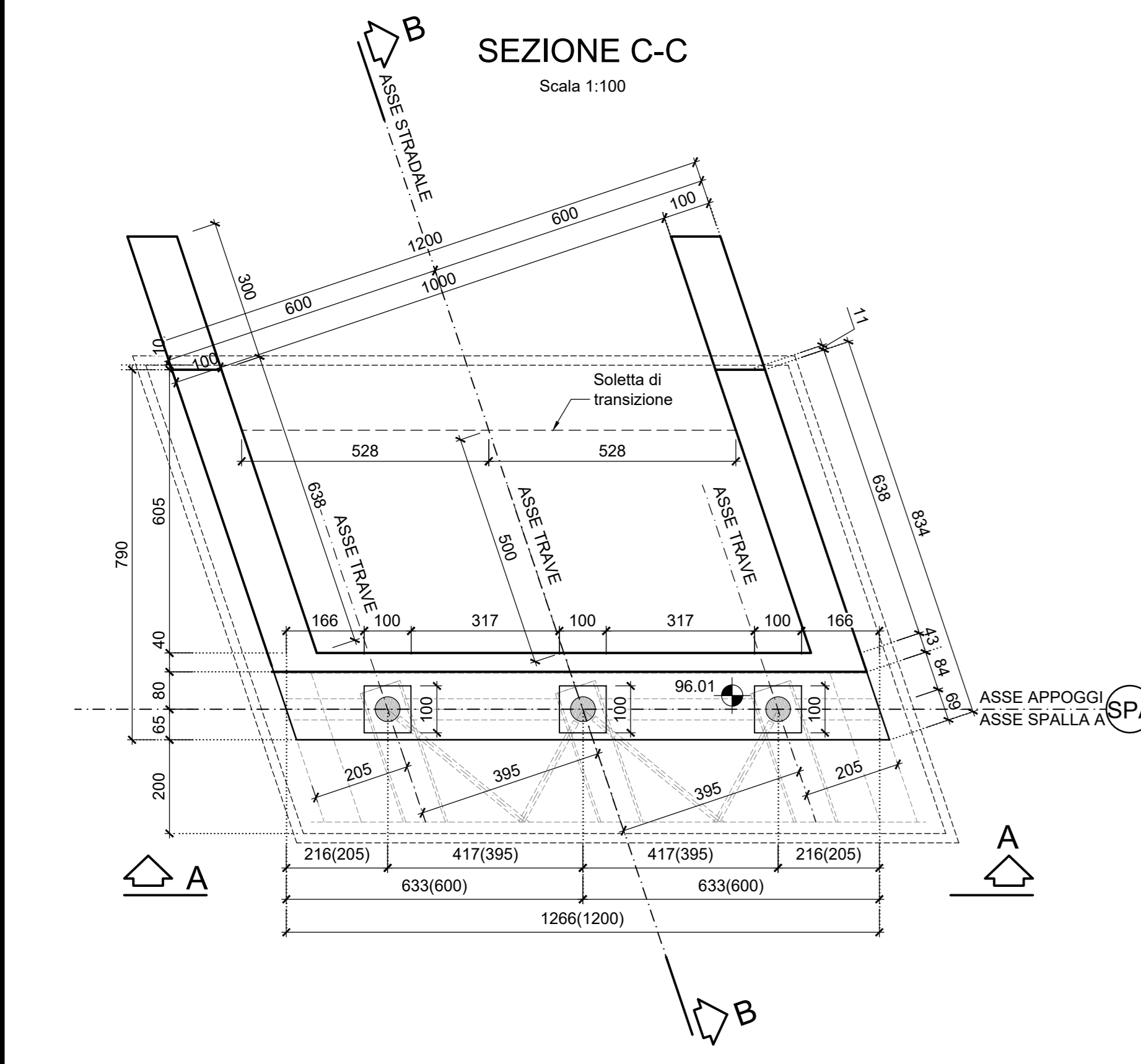
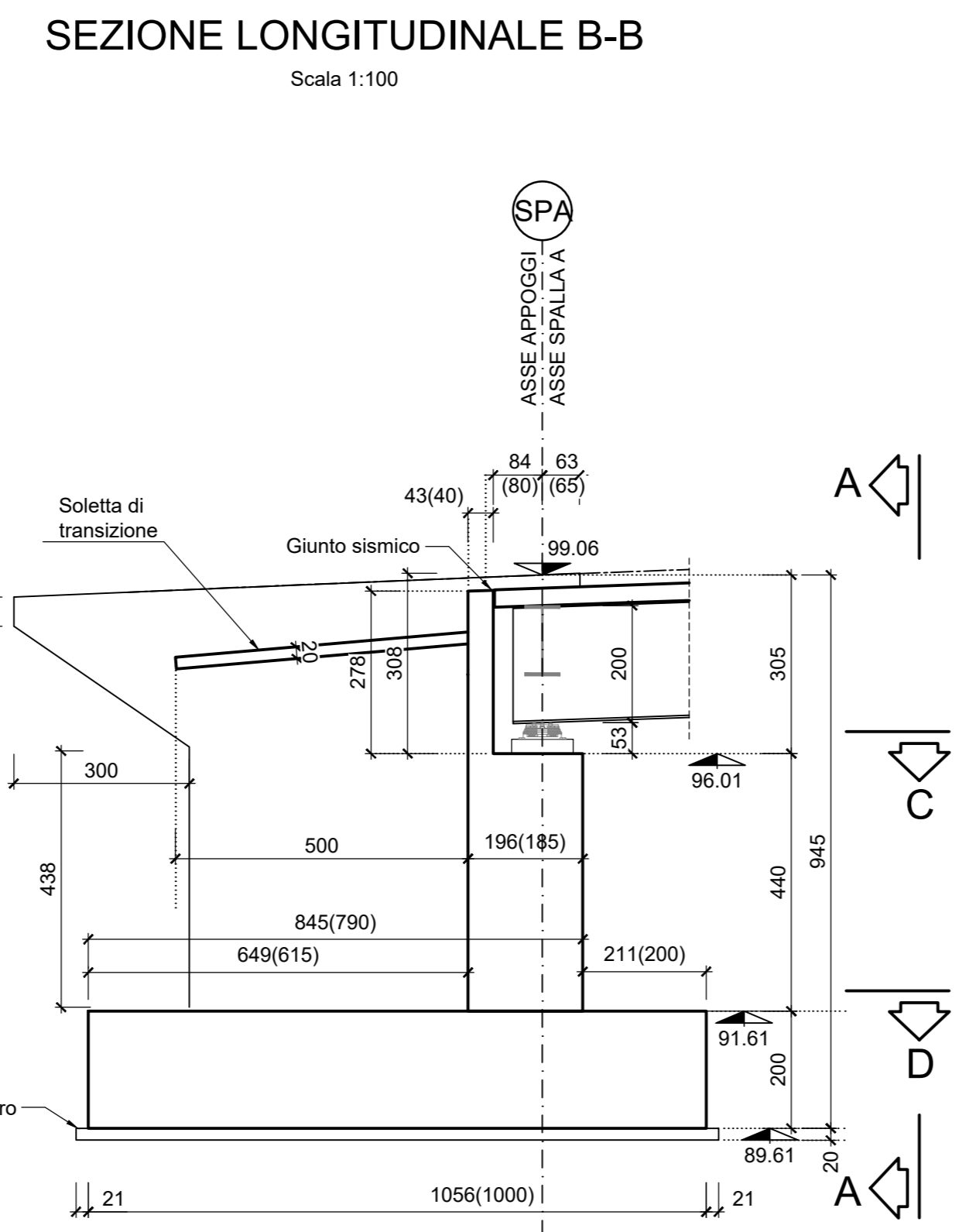
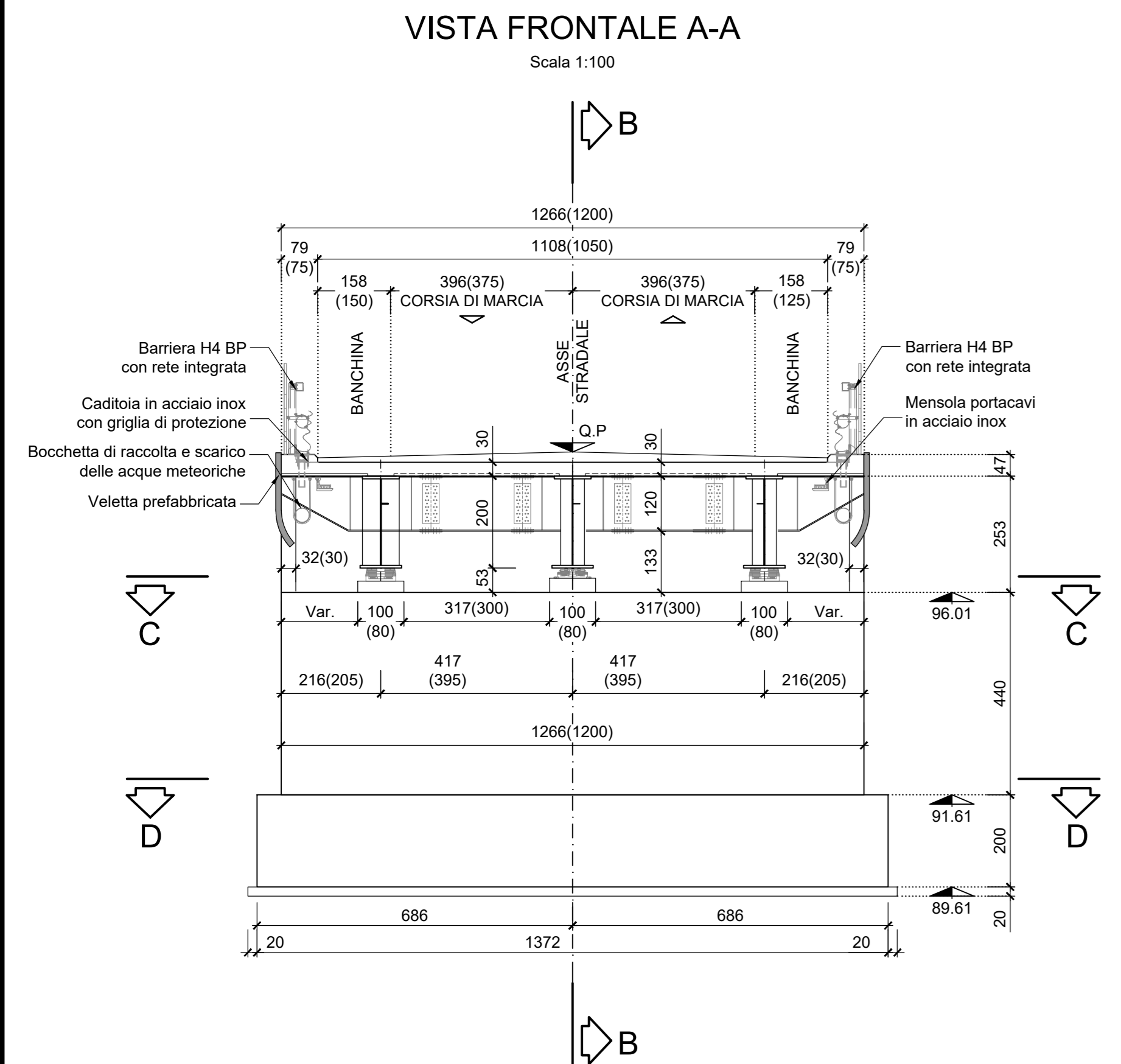
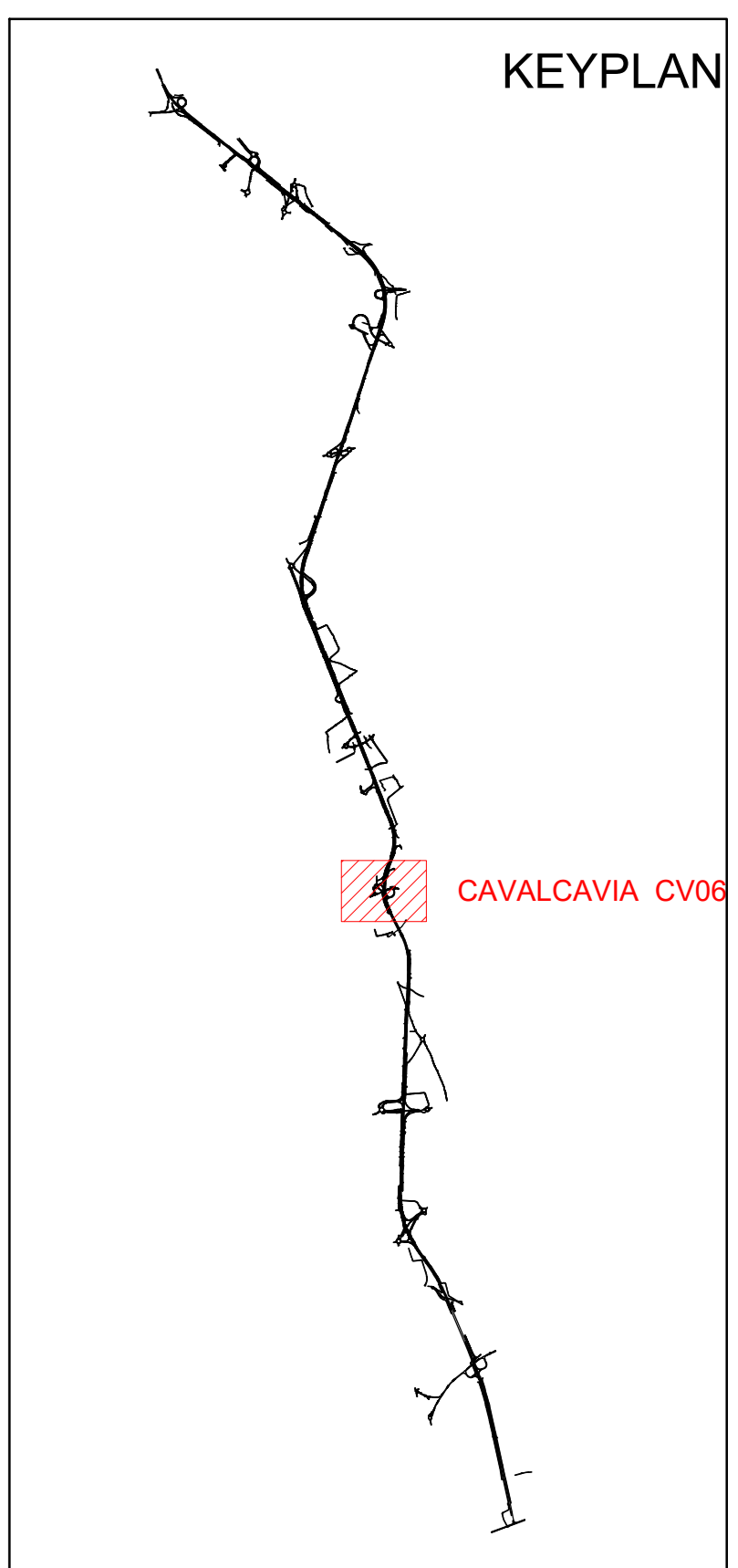
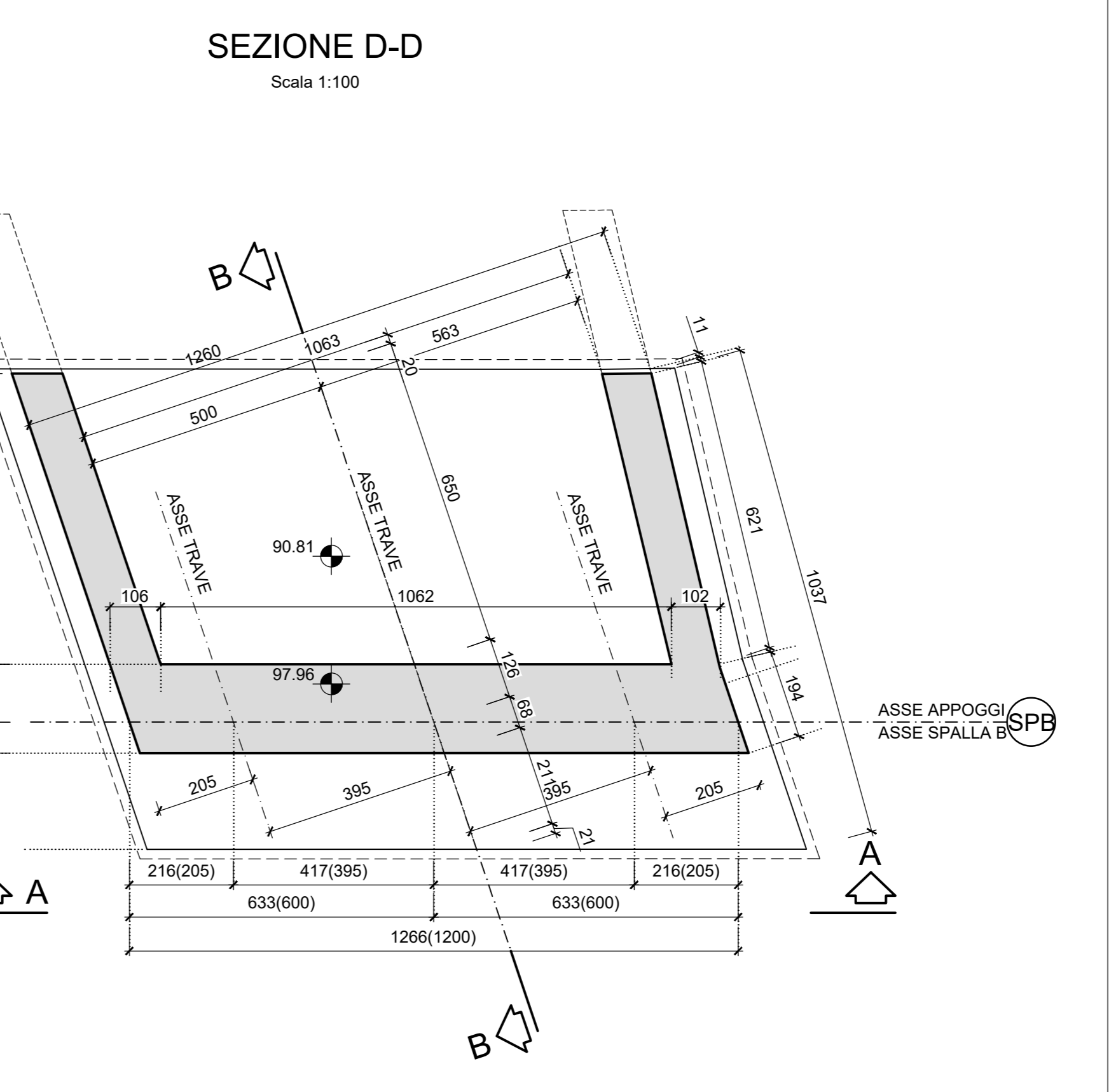
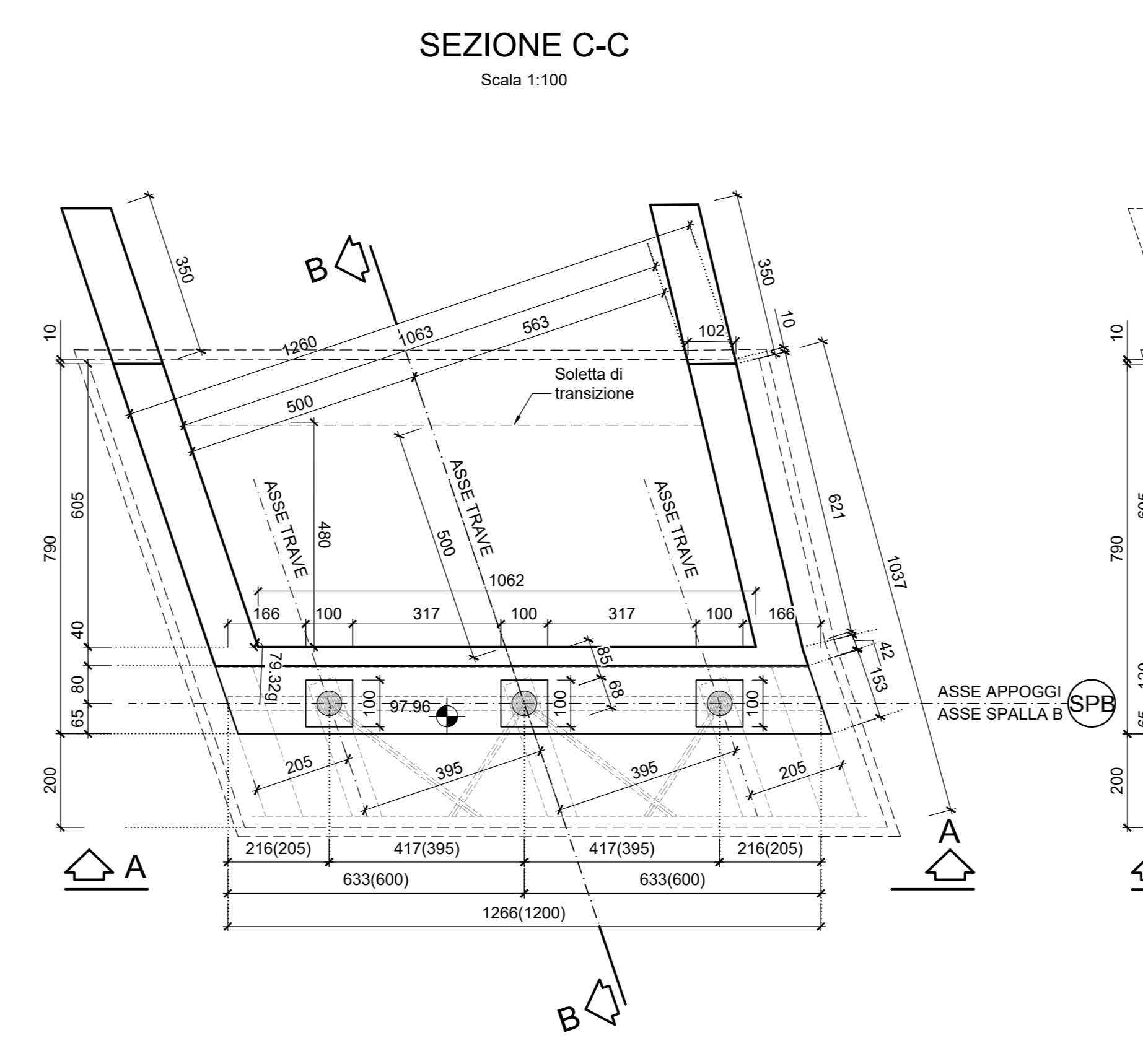
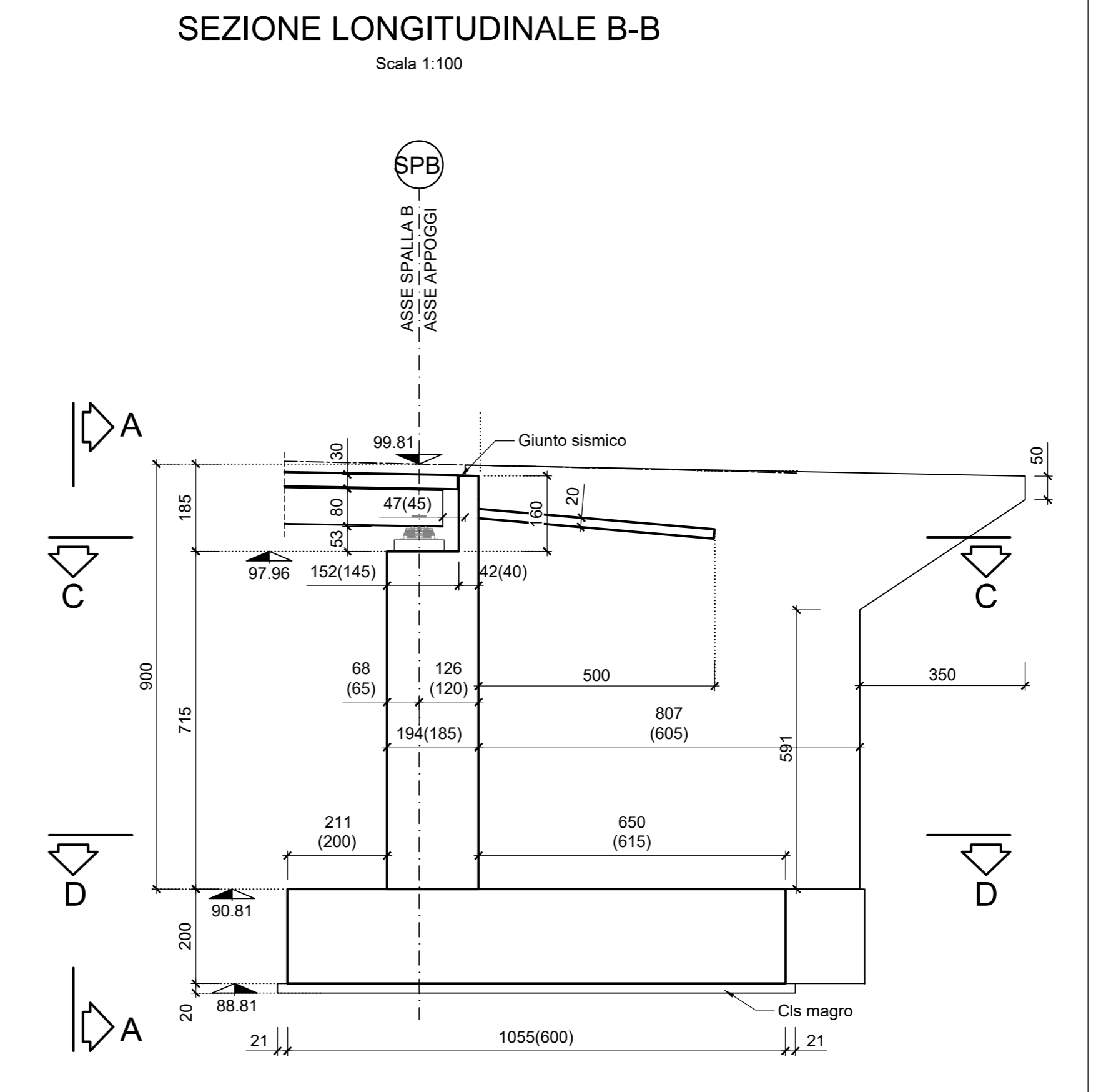
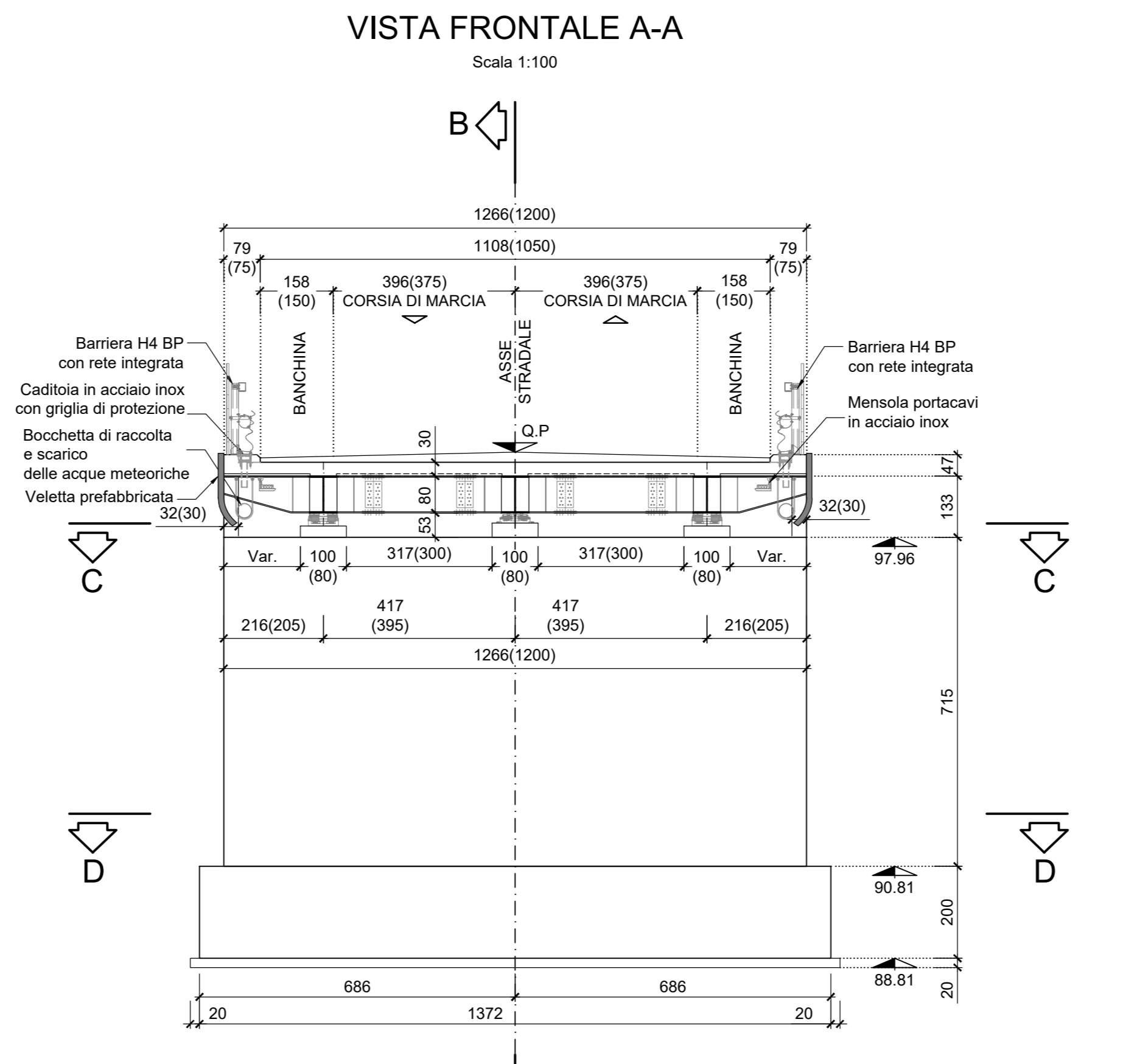


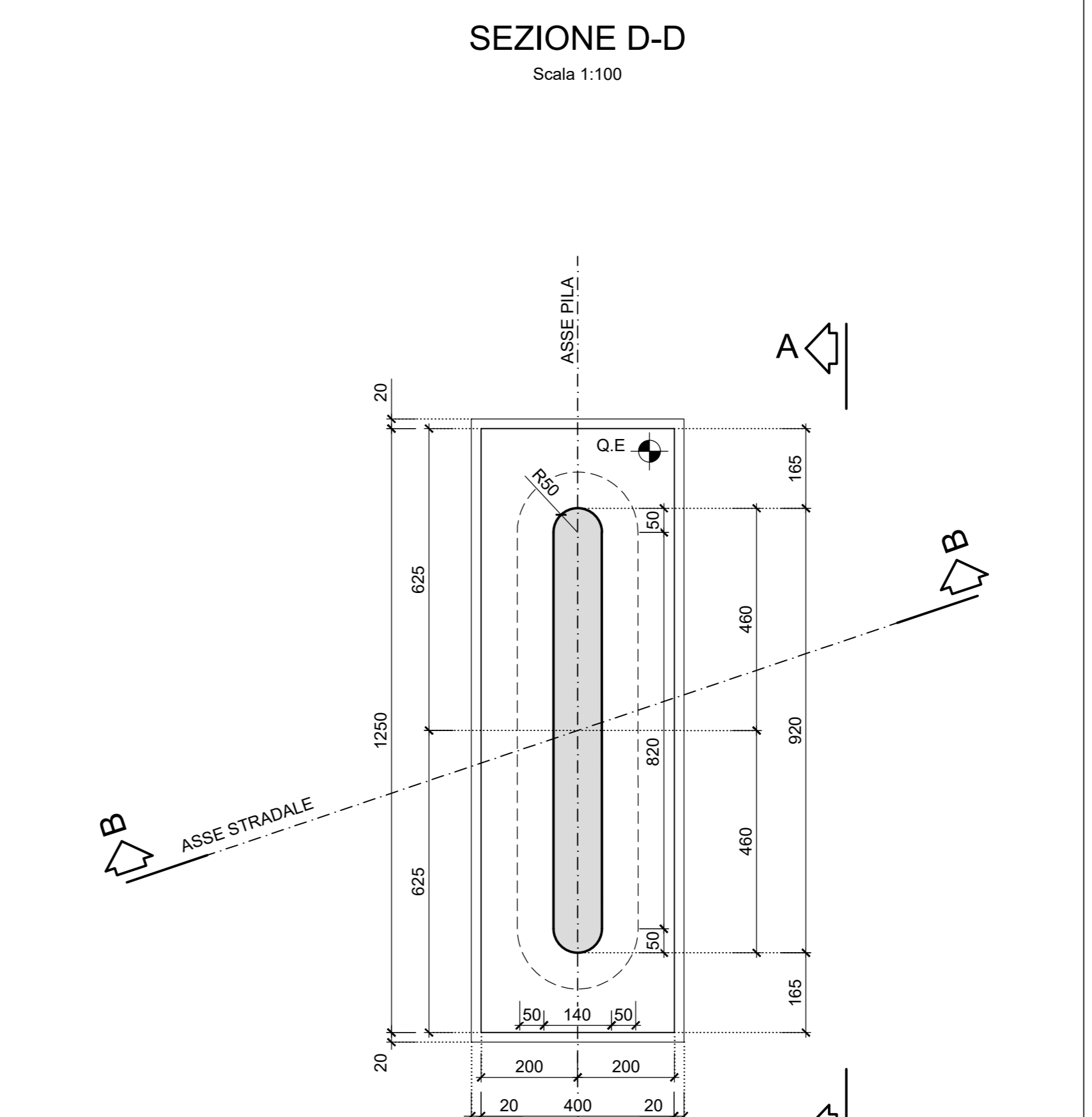
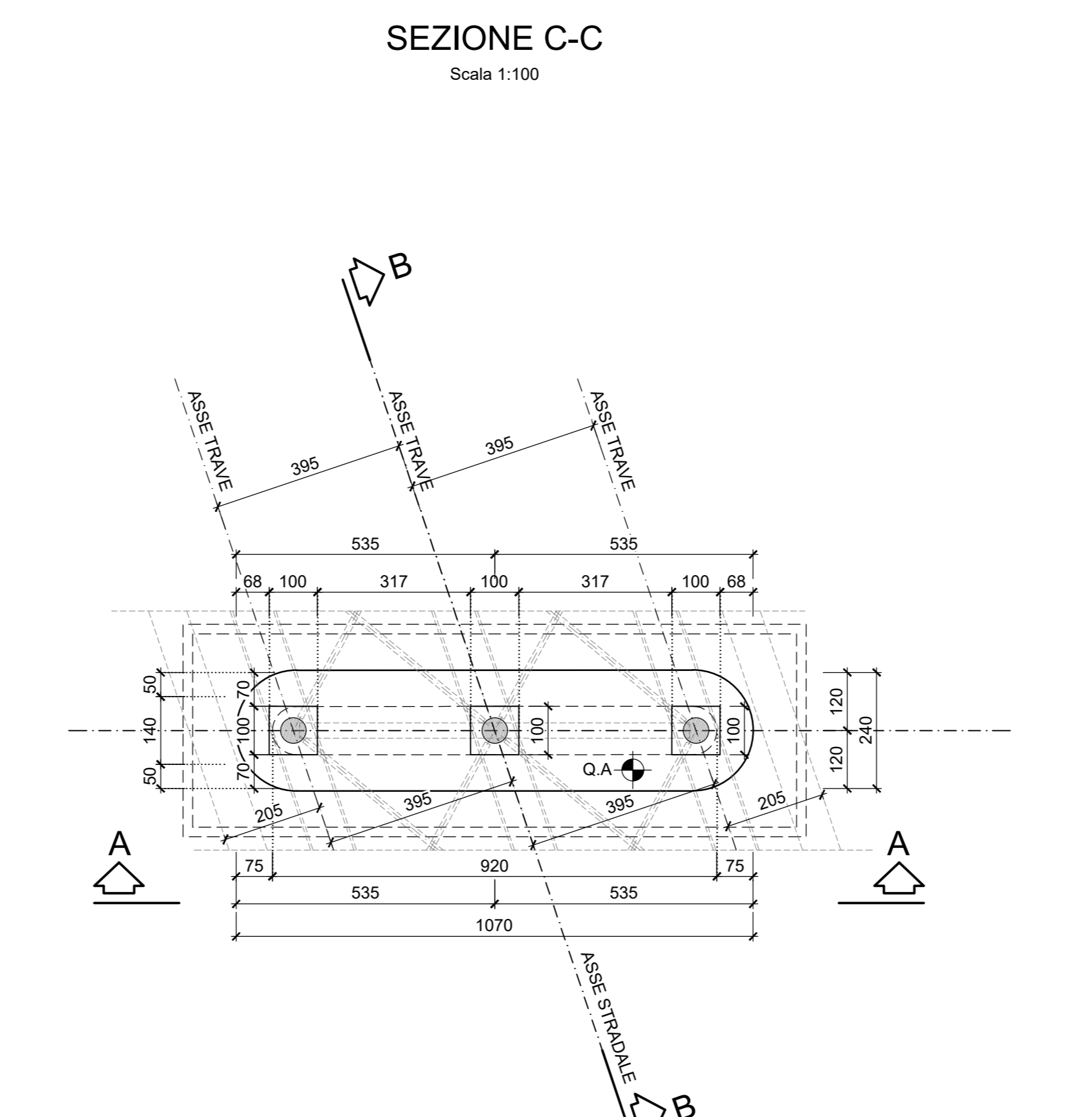
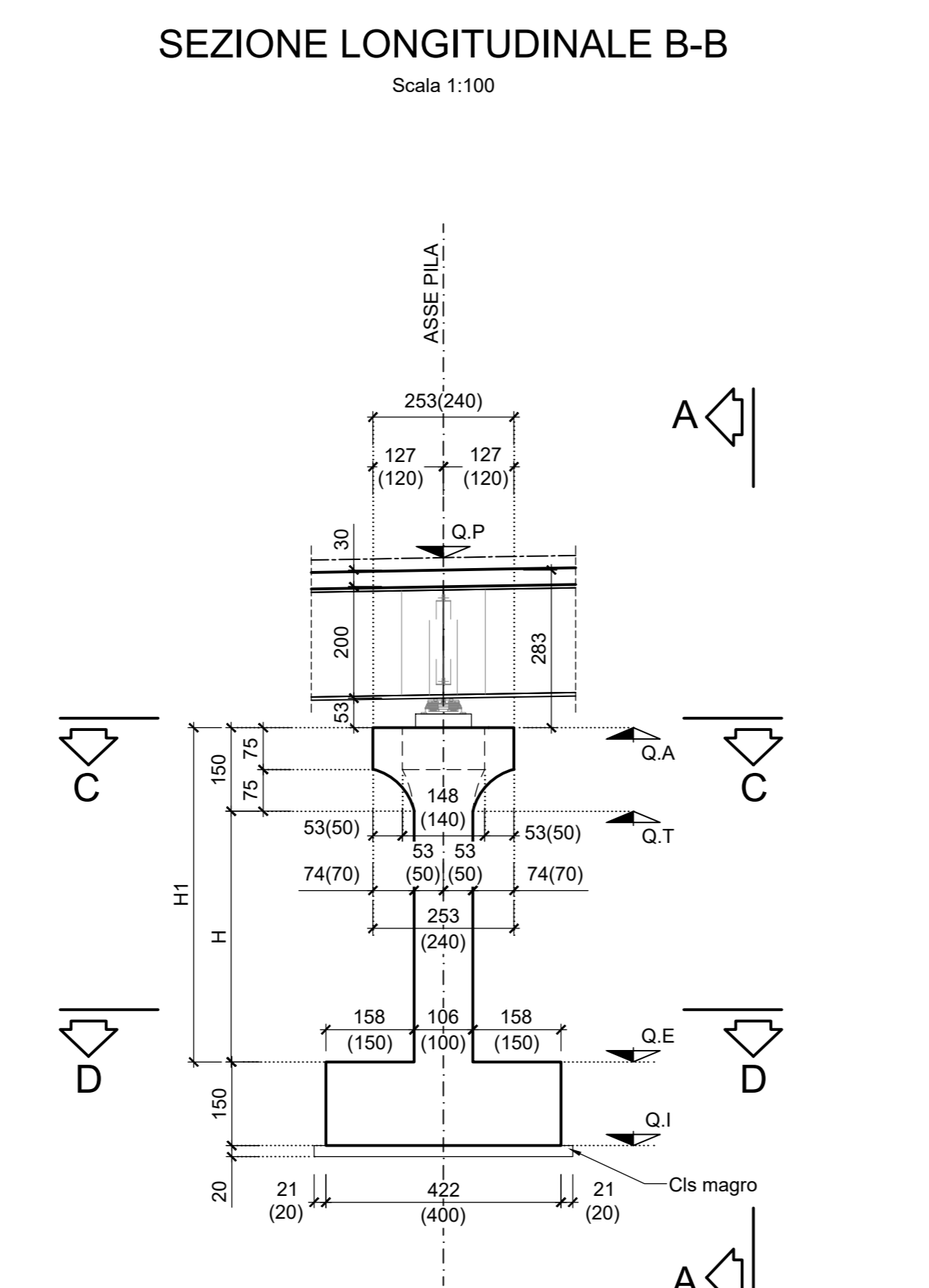
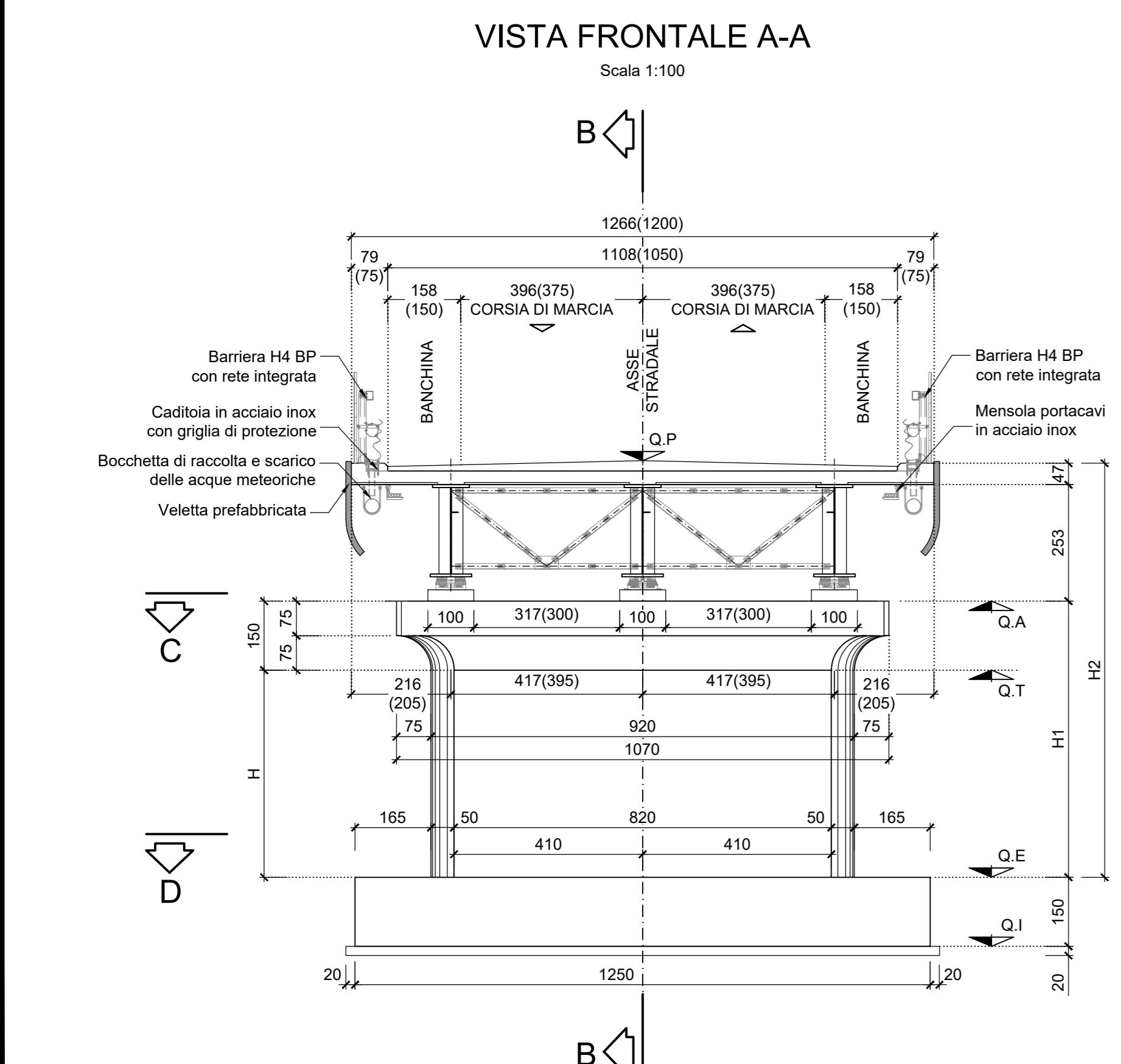
CARPENTERIA SPALLA A  
Scala 1:100



CARPENTERIA SPALLA B  
Scala 1:100



CARPENTERIA PILE  
Scala 1:100



|      | PILA   | Q.P.   | G.A.  | Q.T.  | Q.E.  | Q.I.  | H    | H1   | H2    |
|------|--------|--------|-------|-------|-------|-------|------|------|-------|
| CV06 | PILA 1 | 99.91  | 96.85 | 96.35 | 90.85 | 89.35 | 4.50 | 6.00 | 9.00  |
|      | PILA 2 | 100.03 | 96.98 | 96.48 | 89.73 | 88.23 | 5.75 | 7.25 | 10.25 |

**Sanas** GRUPPO FS ITALIANE Direzione Progettazione e Realizzazione Lavori

CORRIDOIO PLURIMODALE ADRIATICO  
ITINERARIO MAGLIE - SANTA MARIA DI LEUCA  
S.S. N° 275 "DI S. MARIA DI LEUCA"  
LAVORI DI AMMODERNAMENTO E ADEGUAMENTO ALLA SEZ. B DEL D.M. 5.11.2001  
S.S. 16 dal km 981+700 al km 985+386 - S.S. 275 dal km 0+000 al km 37+000  
1° Lotto: Dal Km 0+000 di prog. al Km 23+300 di prog.

PROGETTO DEFINITIVO COD. BA283

PROGETTAZIONE: ANAS - COORDINAMENTO TERRITORIALE ABRUZZA

PROGETTISTI:  
Ing. Alberto SANCHEZ - Progettista e Coordinatore  
Ing. Simone MANGIOLLO - Progettista

COLLABORATORI:  
Geom. Andrea DELL'ANNA  
Geom. Massimo MARINO  
Geom. Giuseppe CALO'

IL GEOLOGO:  
Geo. Pasquale SCORCIA

IL COORDINATORE IN FASE DI PROGETTAZIONE:  
Ing. Alberto SANCHEZ

IL RESPONSABILE DEL PROCEDIMENTO:  
Ing. Gianfranco PAGLIAROSA

RESPONSABILE PROJECT MANAGEMENT PUGLIA:  
Ing. Nicola MANDI

ATTIVITA' DI SUPPORTO  
**GEODATA** ENGINEERING  
**Alpina**  
**NET** ENGINEERING  
**PROSIST**

08 - OPERE D'ARTE MAGGIORI - VIADOTTI E PONTI  
Cavalcavia (Comune di Nociglia)  
CV 6 - al km 13+743,01  
Carpenteria spalle e pile

| CODICE PROGETTO | NOME FILE           | REVISIONE | SCALA: |
|-----------------|---------------------|-----------|--------|
| PROGETTO        | T00_CV06_STR_CP03_B |           | 1:100  |
| PROGETTO        | LIV. PROG. N. PROG. |           |        |
| LABOR.          | CODICE ELAB.        |           |        |

| REV. | DESCRIZIONE                                       | DATA        | REDATTO          | VERIFICATO | APPROVATO |
|------|---|-------------|------------------|------------|-----------|
| B    | OTTIMIZZAZIONE PARERE Addi Puglia - PARERE CSLPPP | Aprile 2019 | S. Negri         |            |           |
| A    | REVISIONE DEL PROGETTO DEFINITIVO                 | Giugno 2018 | Ing. C. Beltrami |            |           |