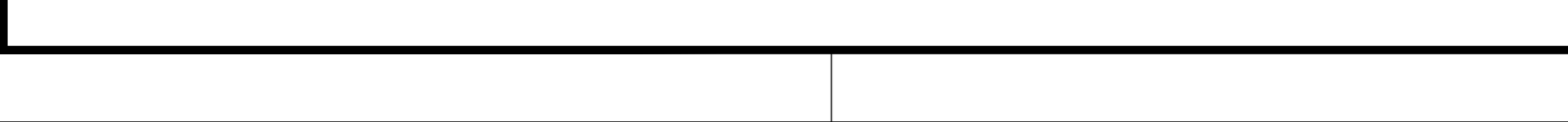
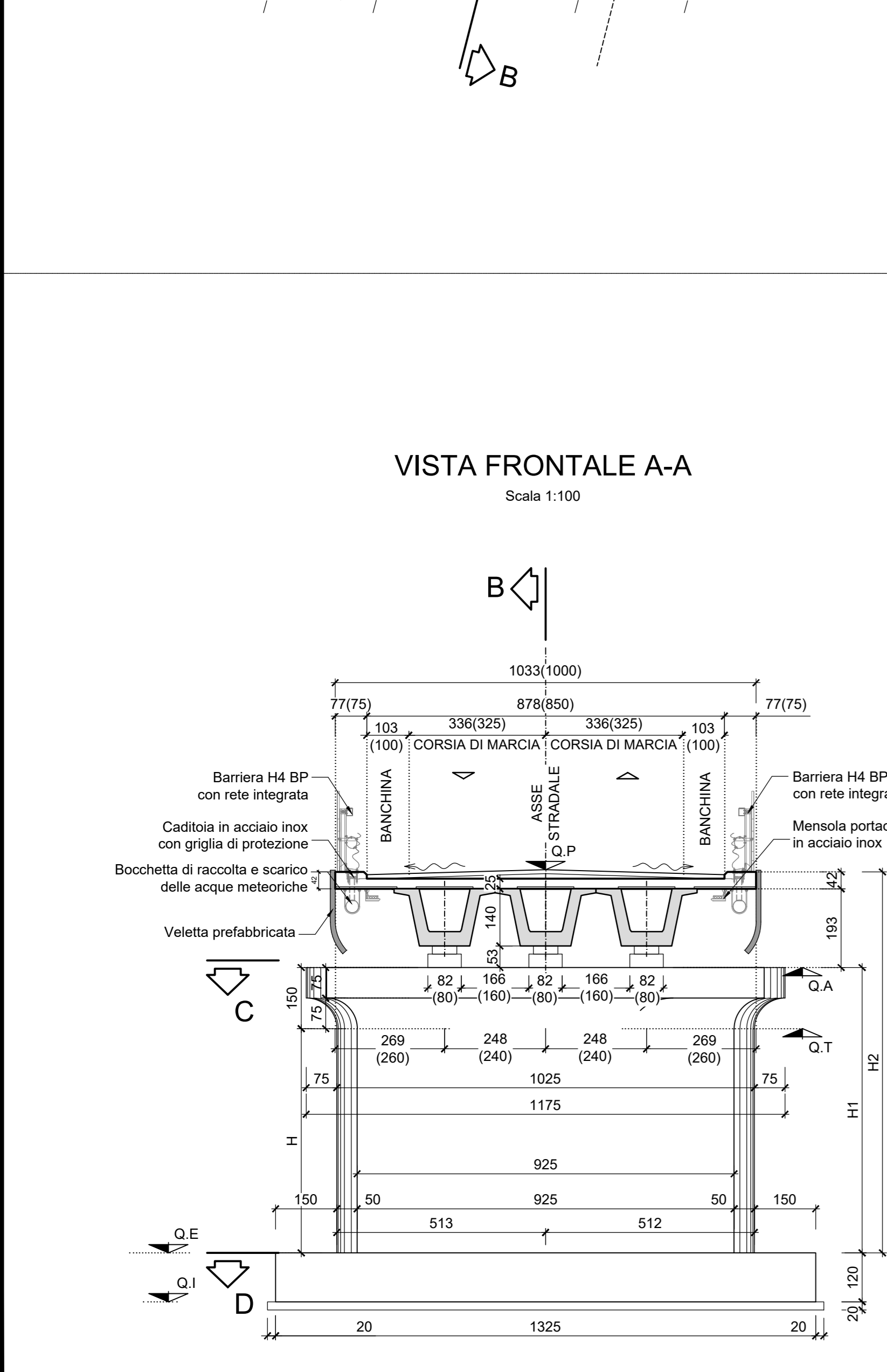
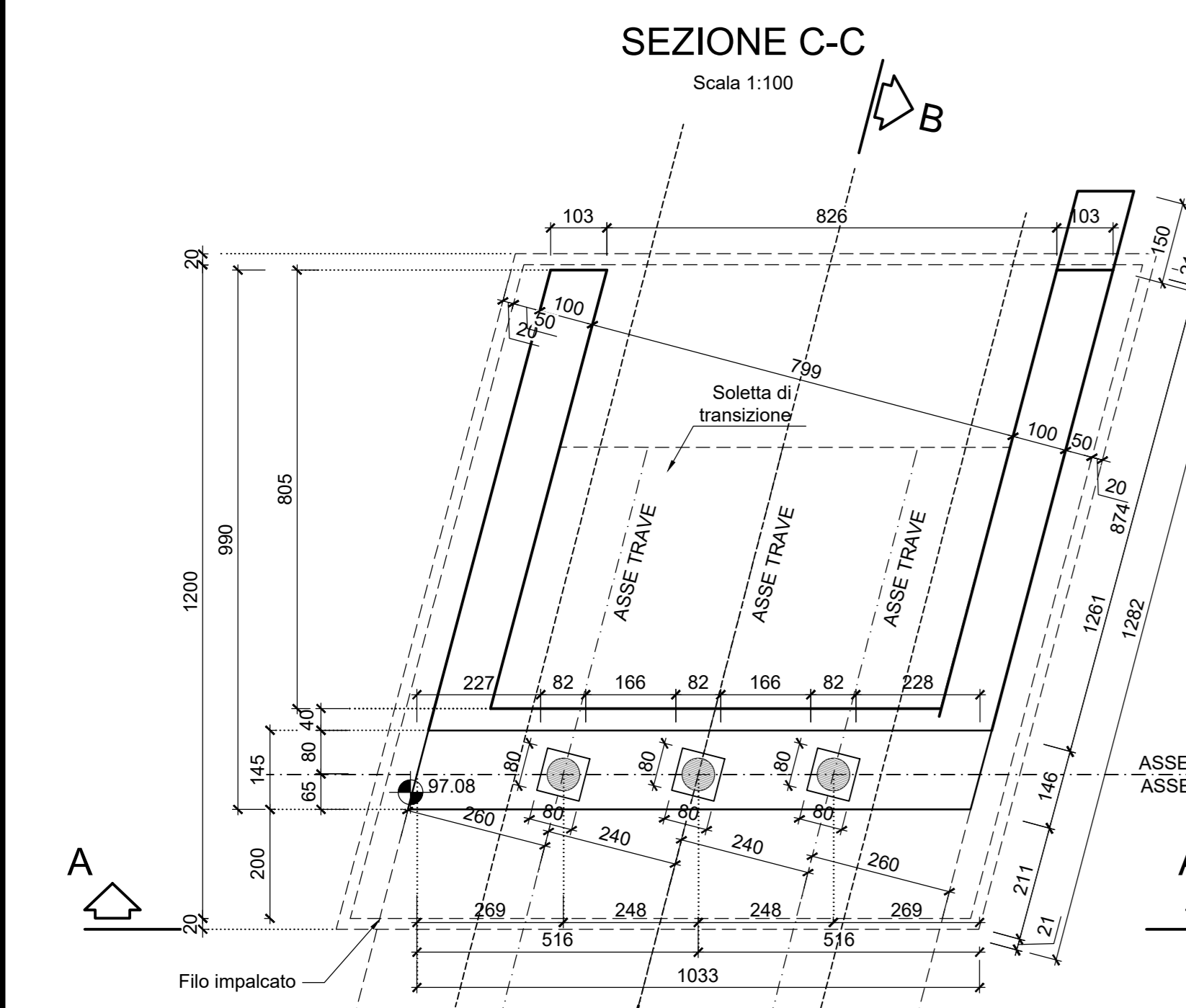
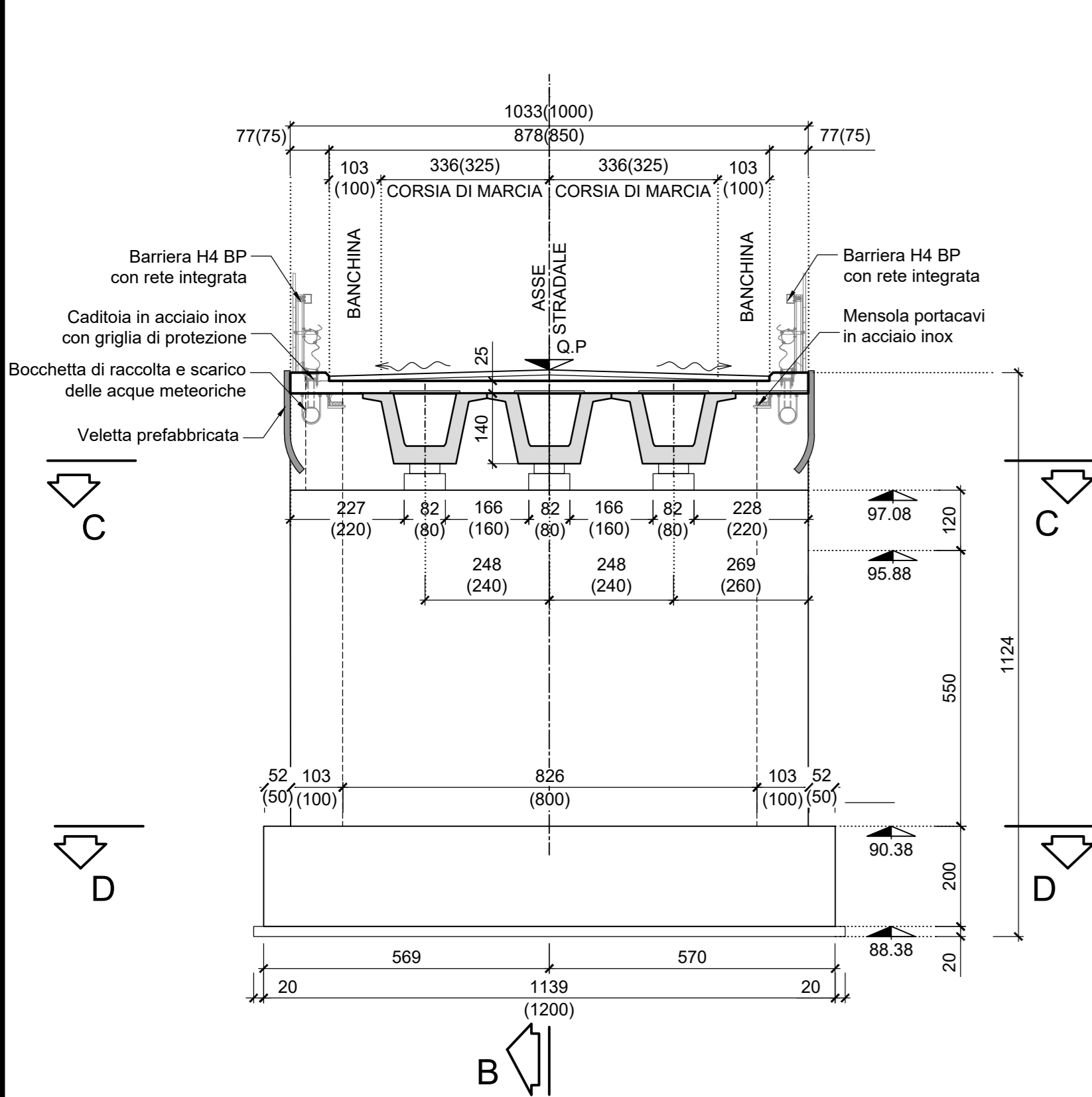


CARPENTERIA SPALLA A

Scala 1:100

VISTA FRONTALE A-A

Scala 1:100

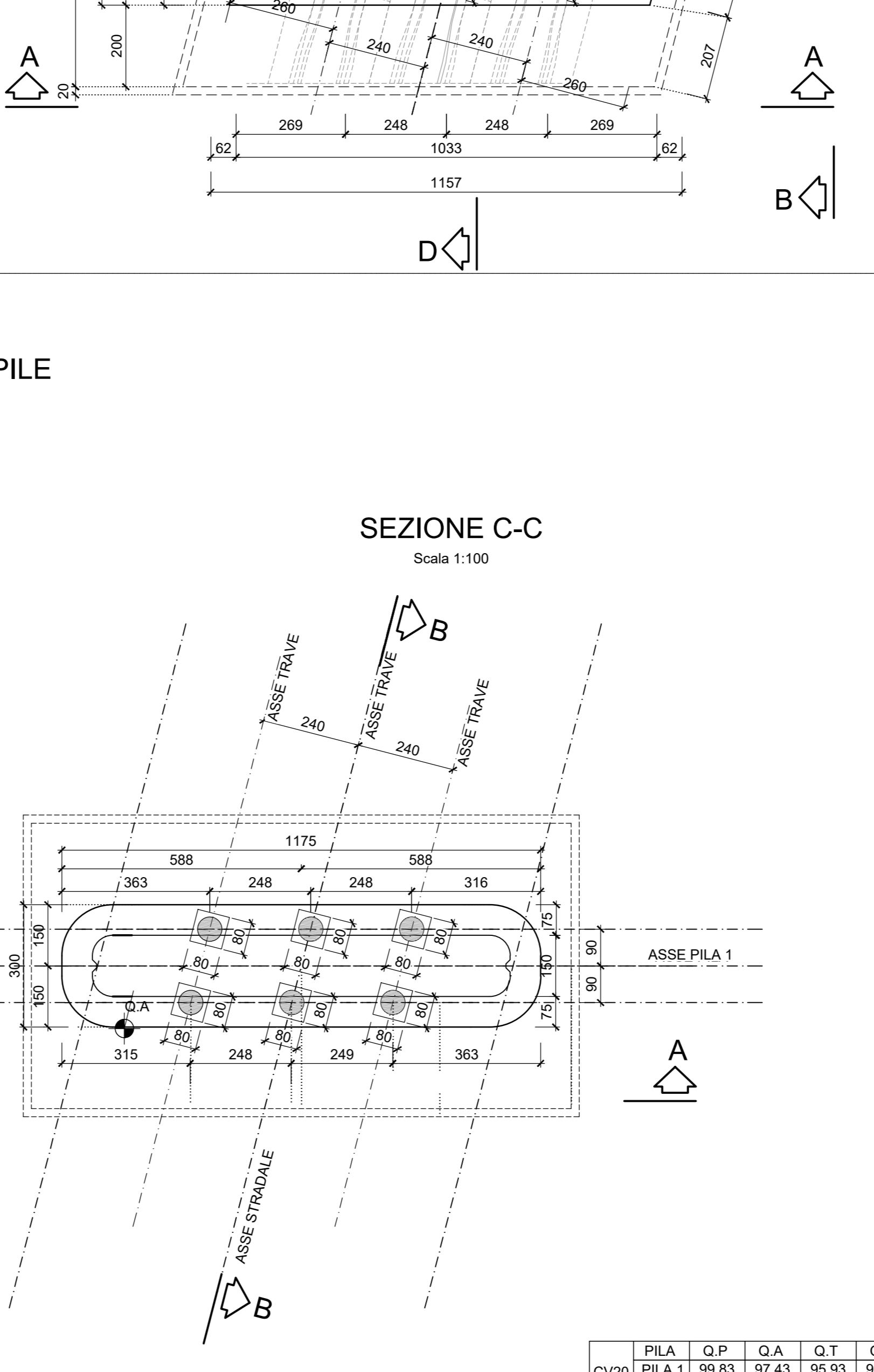
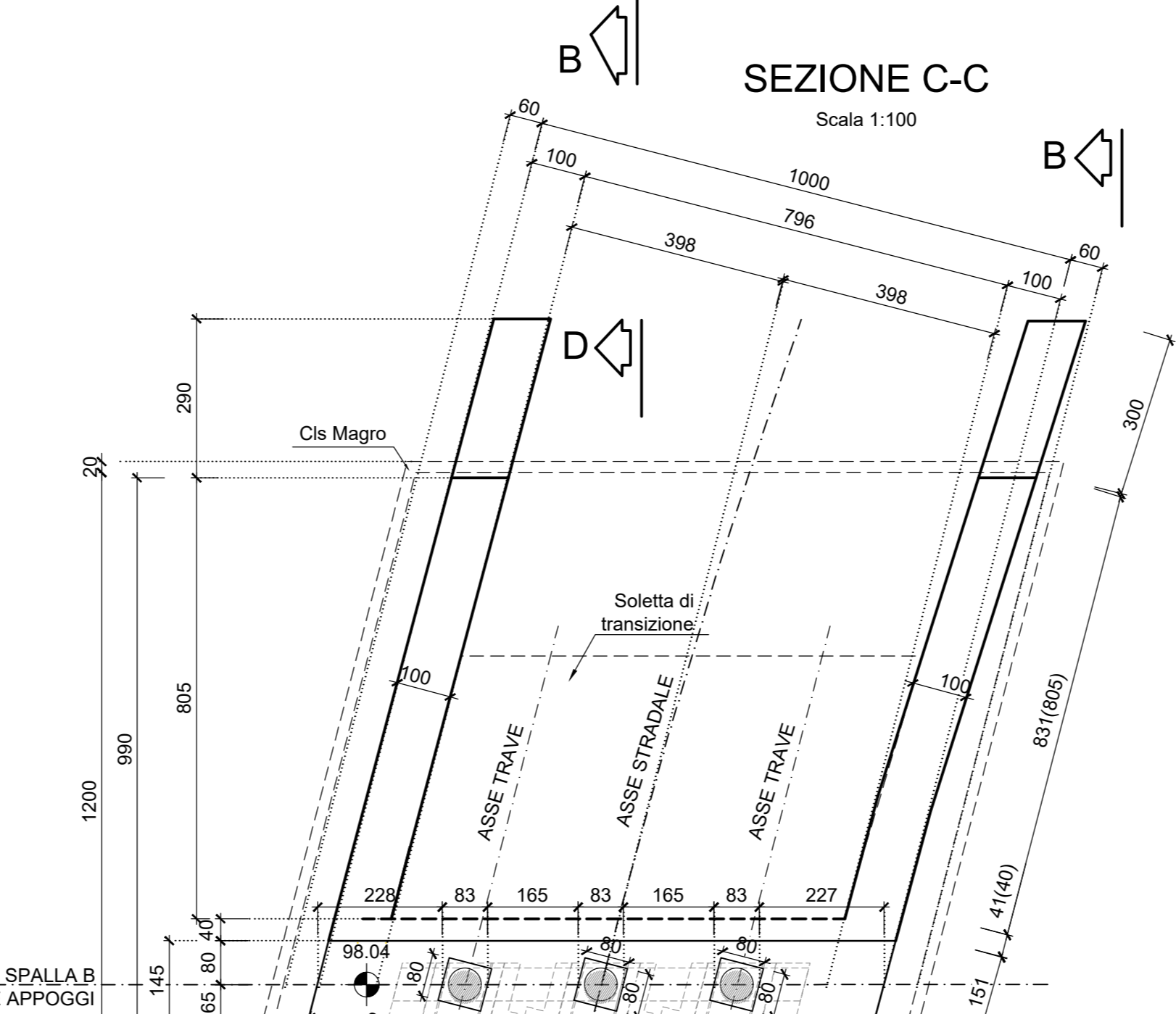
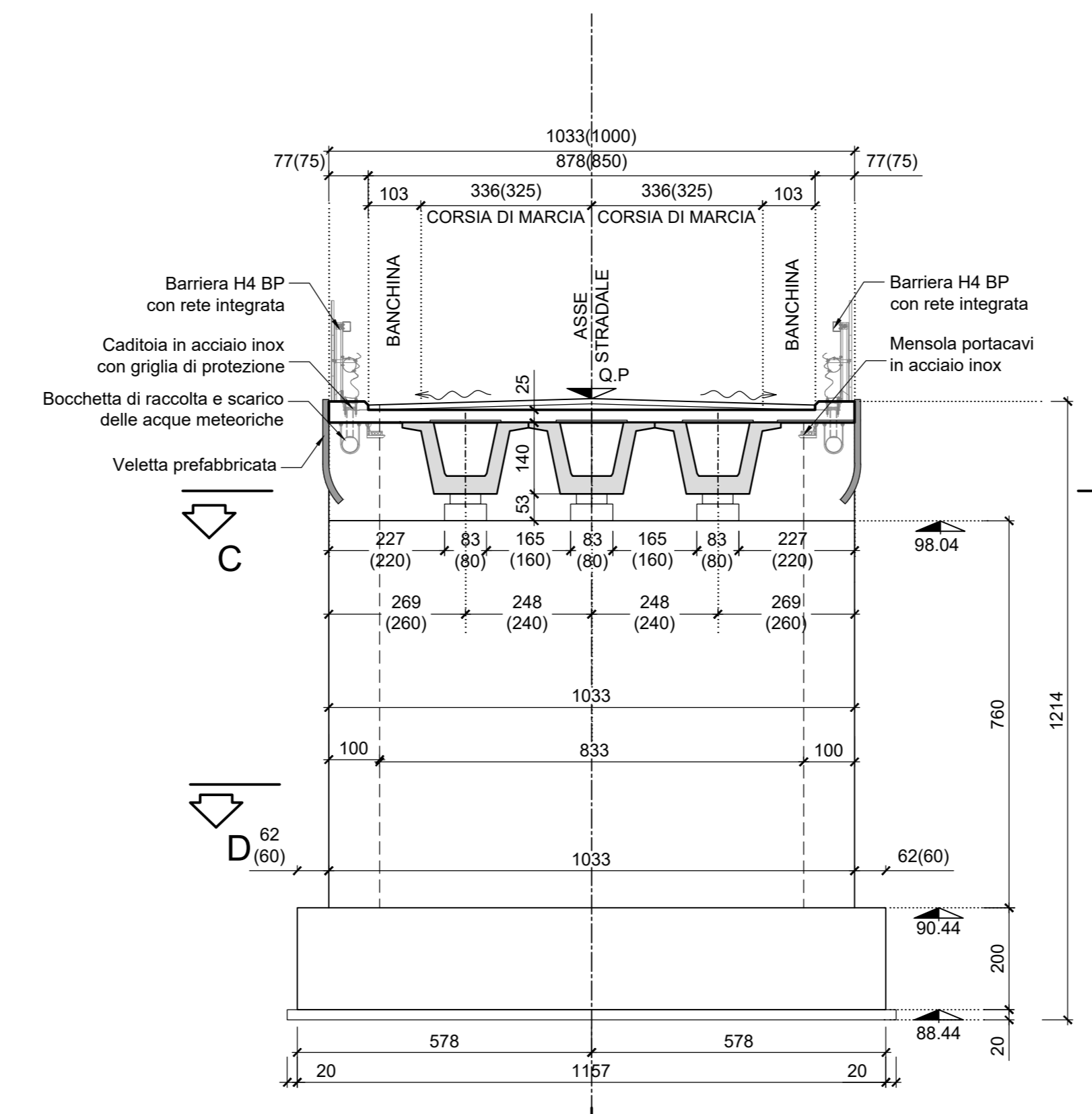


CARPENTERIA SPALLA B

Scala 1:100

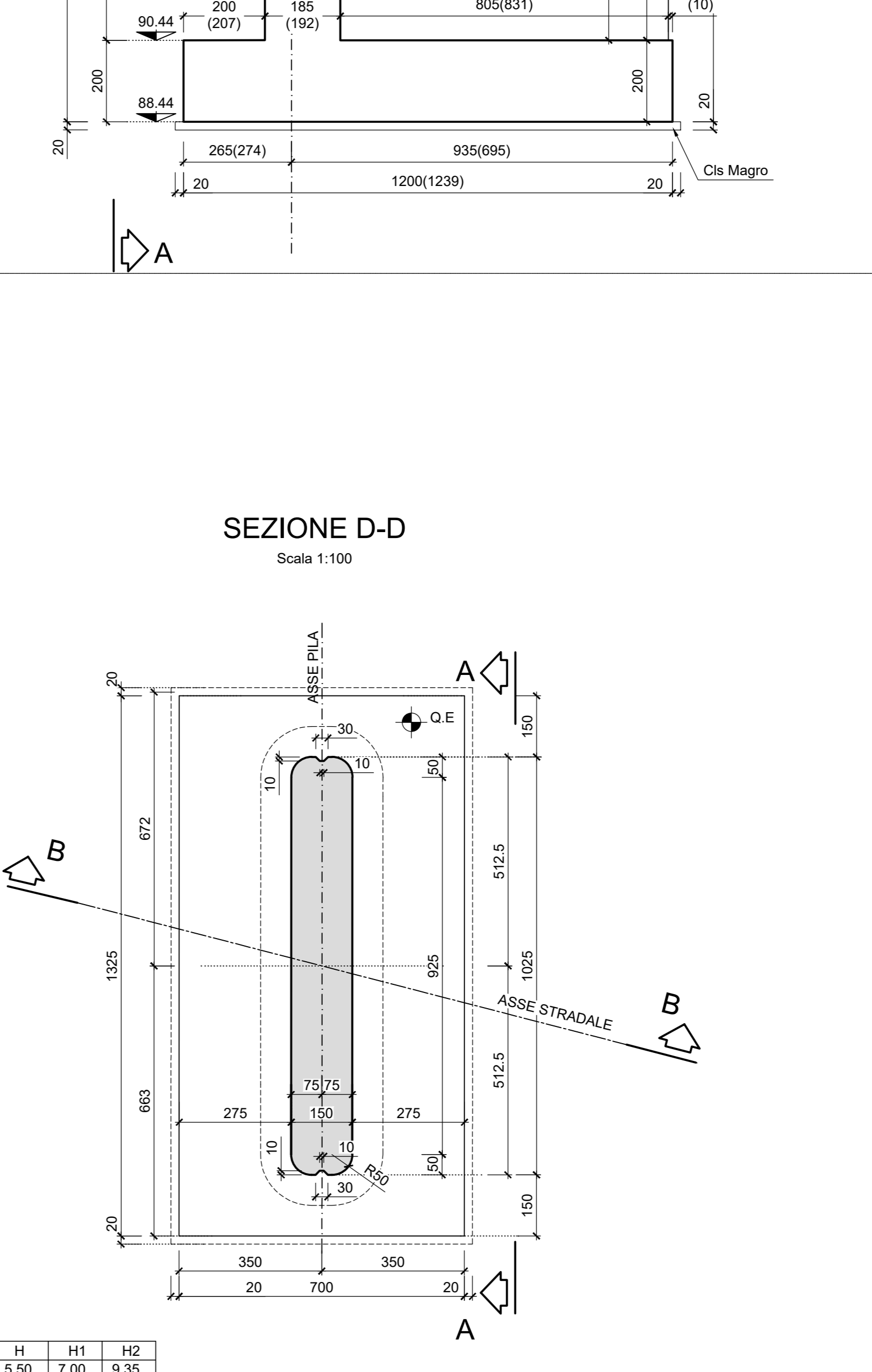
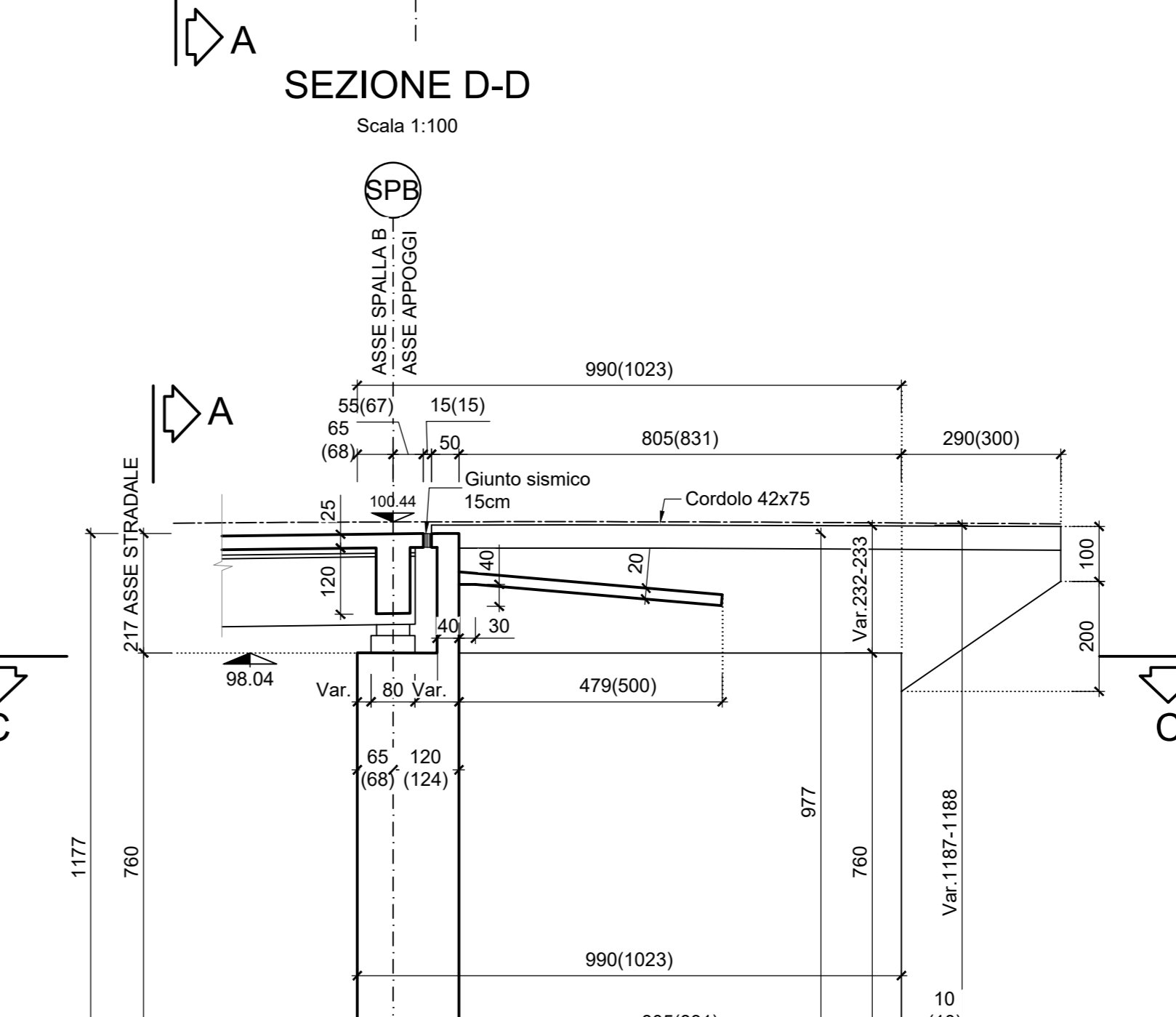
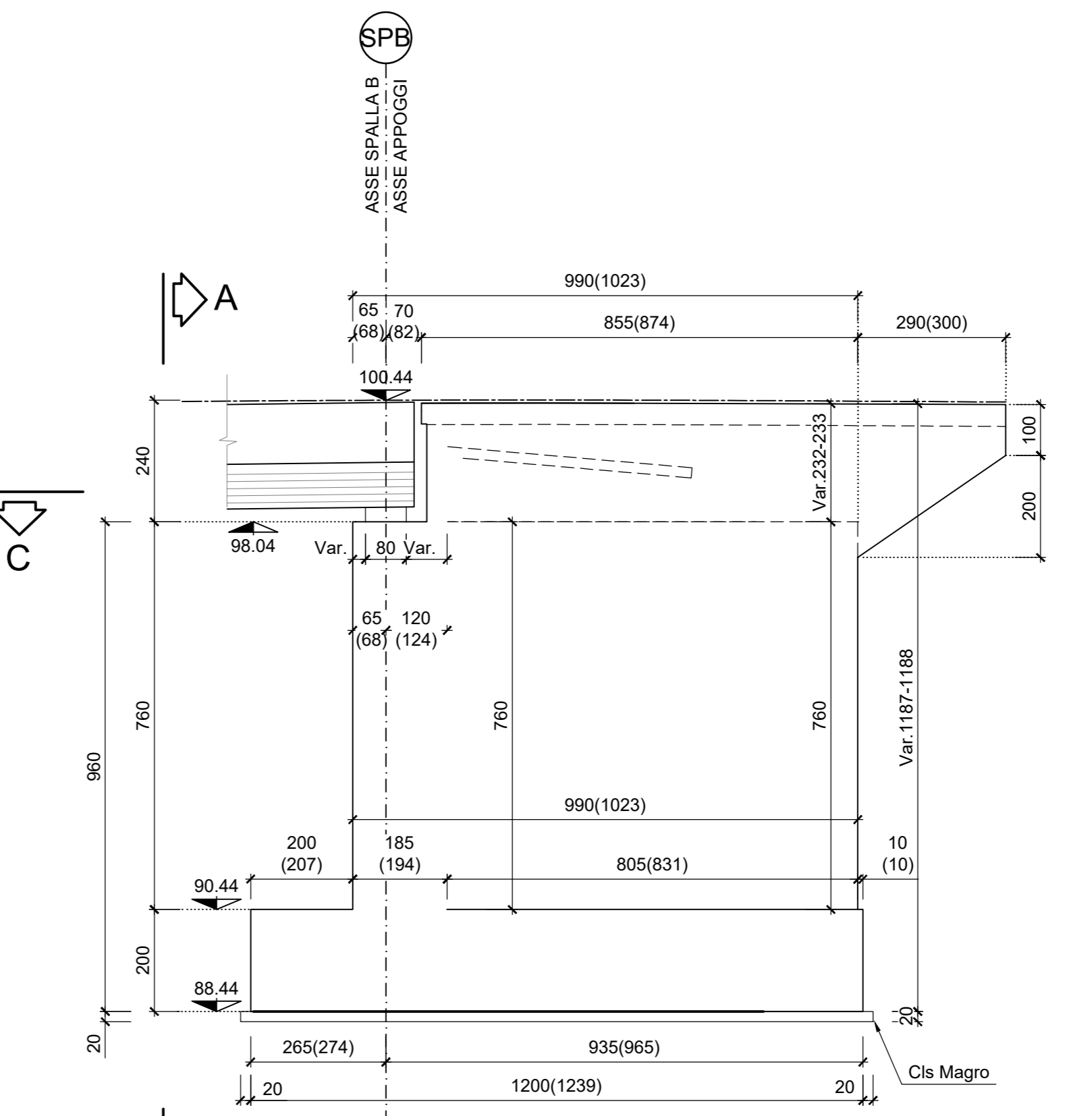
VISTA FRONTALE A-A

Scala 1:100

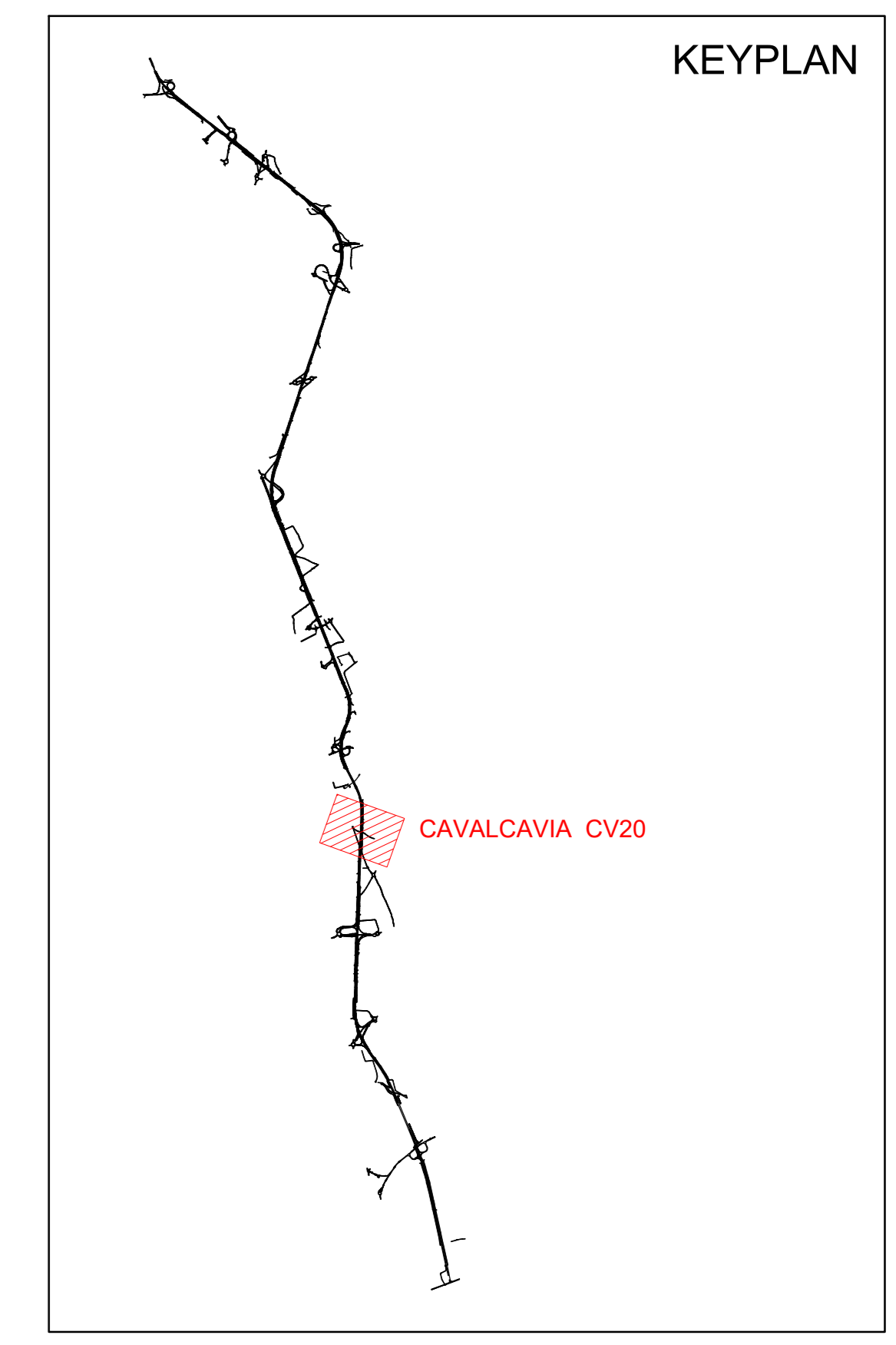


VISTA LATERALE (B-B)

Scala 1:100



KEYPLAN

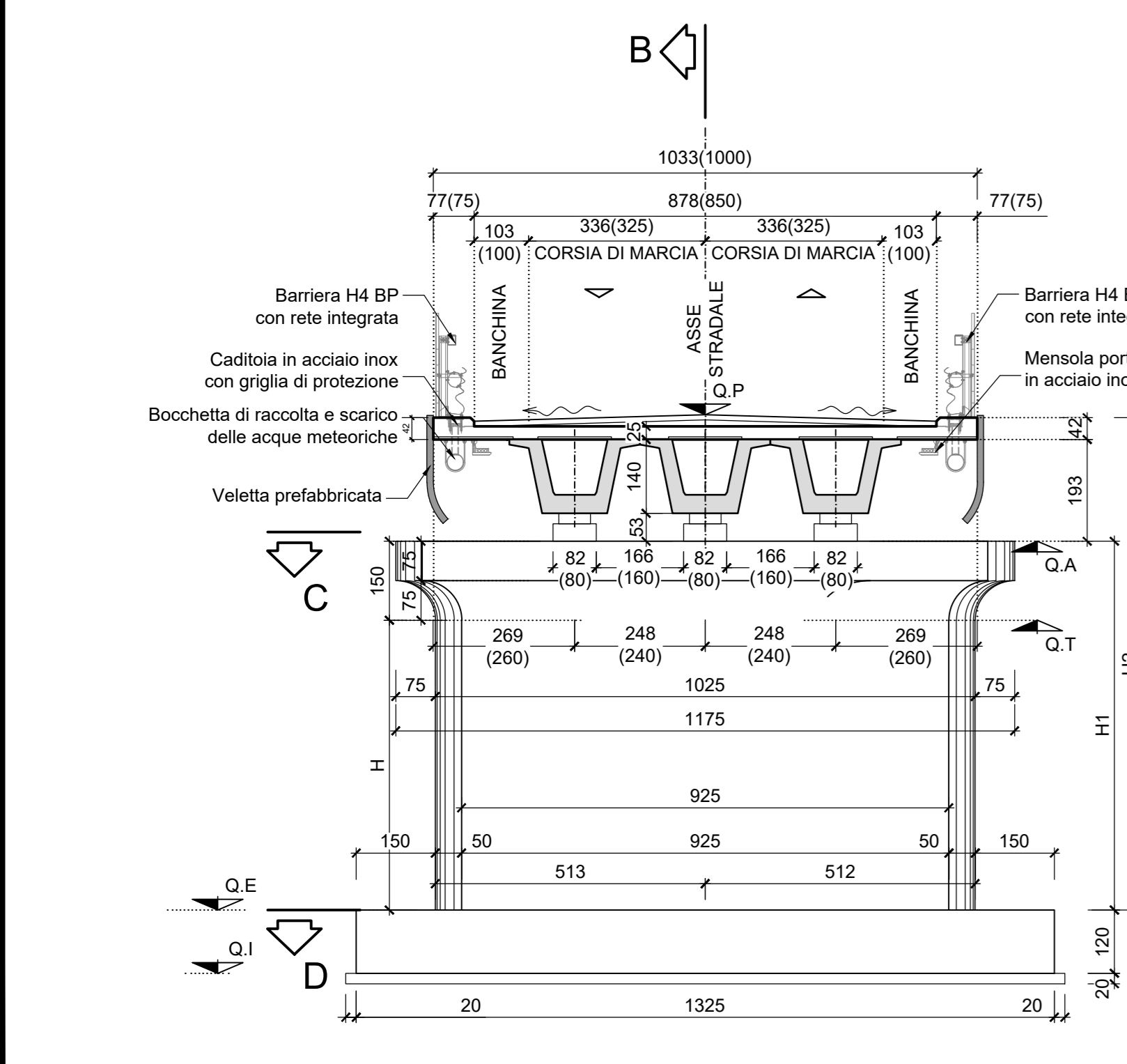


CARPENTERIA PILE

Scala 1:100

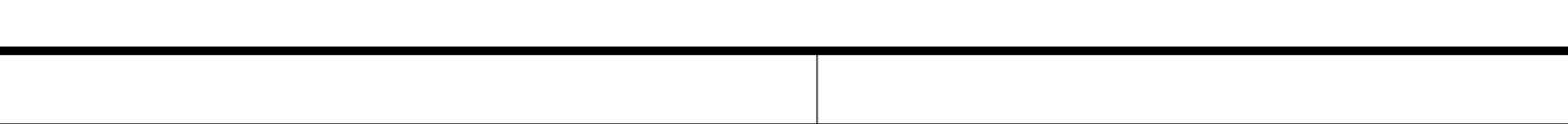
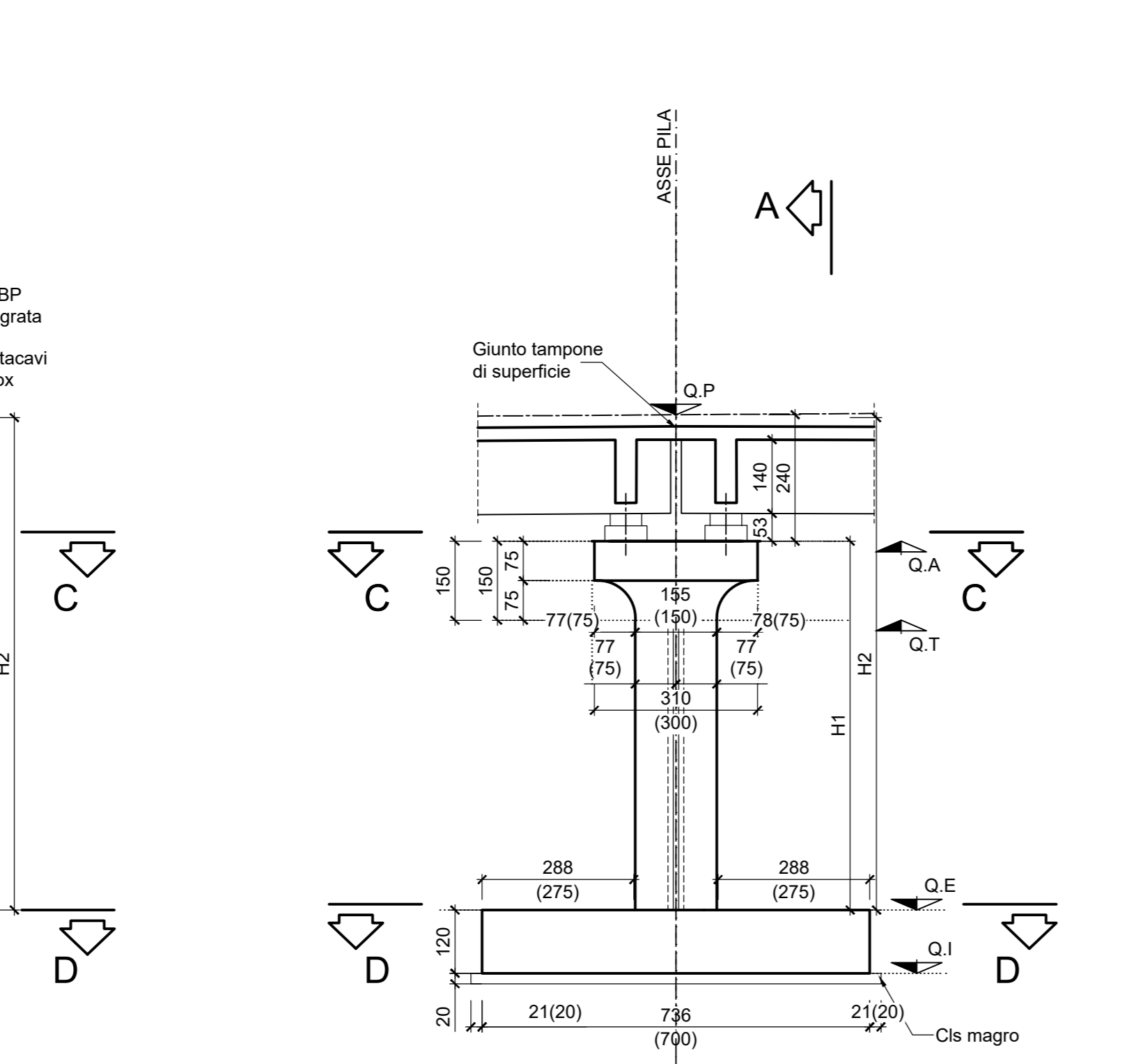
VISTA FRONTALE A-A

Scala 1:100



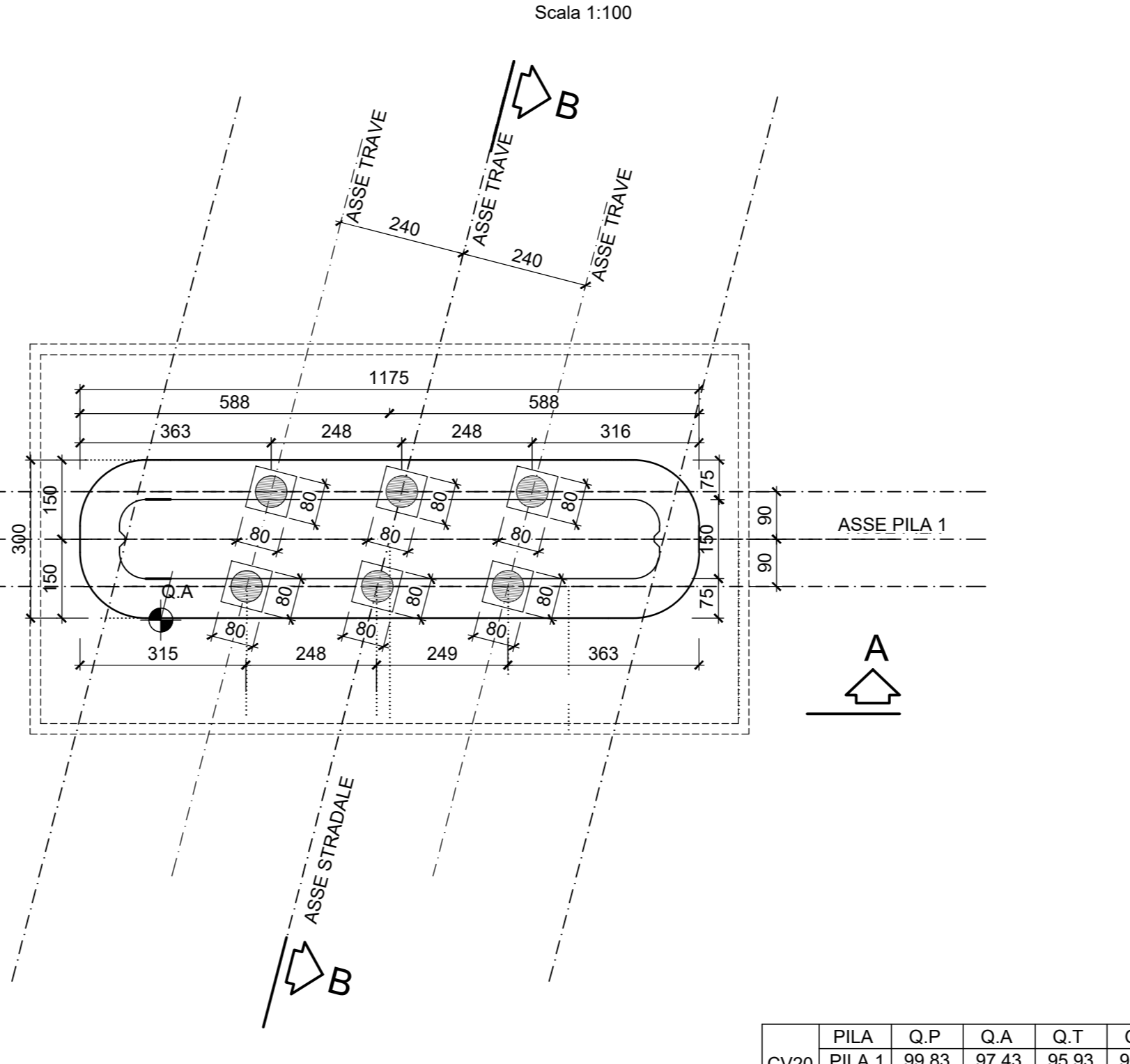
SEZIONE B-B

Scala 1:100



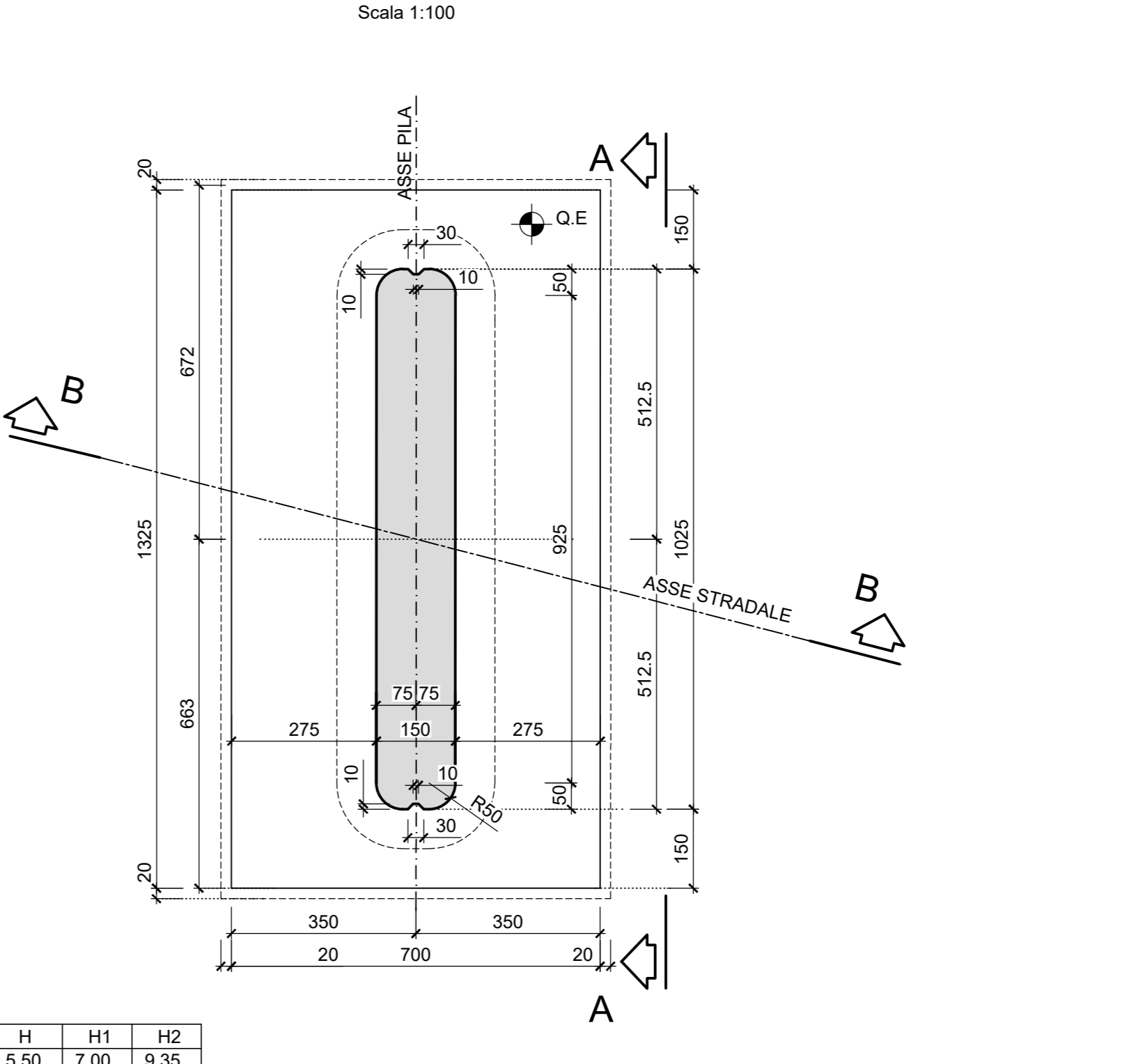
SEZIONE C-C

Scala 1:100



SEZIONE D-D

Scala 1:100



	PILA	Q.P.	Q.A.	Q.T.	Q.E.	Q.I.	H	H1	H2
CV20	PILA 1	99.83	97.43	95.93	90.43	89.23	5.50	7.00	9.35
	PILA 2	100.31	97.91	96.41	90.41	89.21	6.00	7.50	9.85

**Sanas** GRUPPO FS ITALIANE Direzione Progettazione e Realizzazione Lavori

**CORRIDOIO PLURIMODALE ADRIATICO**  
 ITINERARIO MAGLIE - SANTA MARIA DI LEUCA  
 S.S. N° 275 "DI S. MARIA DI LEUCA"  
 LAVORI DI AMMODERNAMENTO E ADEGUAMENTO ALLA SEZ. B DEL D.M. 5.11.2001  
 S.S. 36 dal km 981+700 al km 985+386 - S.S. 275 dal km 0+000 al km 37+000  
 1° Lotto: Dal Km 0+000 di prog. al Km 23+300 di prog.

**PROGETTO DEFINITIVO** COD. BA283

**PROGETTAZIONE:** ANAS - GOVERNAMENTO TERRITORIALE ADRIATICA

**PROGETTISTI:**  
 Ing. Alberto SANCHEZ - Proprietà e Coordinatore  
 Ing. Simone MANGIACALDO - Progettista

**COLLABORATORI:**  
 Geom. Andrea DELL'ANNA  
 Geom. Massimo MARINARO  
 Geom. Giuseppe GALO'

**IL GEOMETRA:**  
 Geom. Francesco SCORCIA

**IL COORDINATORE IN FASE DI PROGETTAZIONE:**  
 Ing. Alberto SANCHEZ

**IL RESPONSABILE DEL PROCEDIMENTO:**  
 Ing. Gianfranco PAGGIARUSSA

**RESPONSABILE PROJECT MANAGEMENT PUGLIA:**  
 Ing. Nicola MARI'

**ATTIVITÀ DI SUPPORTO:**  
**GEODATA ENGINEERING**  
**Alpina**  
**NET ENGINEERING**  
**PROIEZIONE COLLABORATORI**

**08 - OPERE D'ARTE MAGGIORI - VIADOTTI E PONTI**  
 Cavalcavia (Comune di Surano)  
 CV20 - al km 15+221.59  
 Carpenteria spalle e pile

CODICE PROGETTO	NOME FILE	REVISIONE	SCALA:
PROGETTO	TOO_CV20_STR_CP03_B		
CV20	LA0503A 01701		1:100

REV.	DESCRIZIONE	DATA	REDATTO	VERIFICATO	APPROVATO
B	OTTIMIZZAZIONE PARERE AdB Puglia - PARERE CSLLPP	Aprile 2019	S. Negri		
A	REVISIONE DEL PROGETTO DEFINITIVO	Giugno 2018	Ing. C. Bellomi		