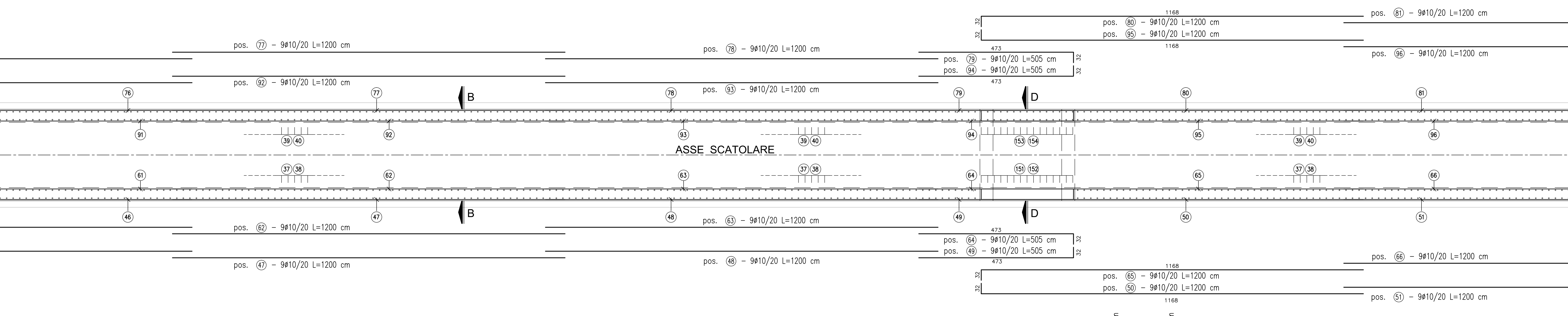
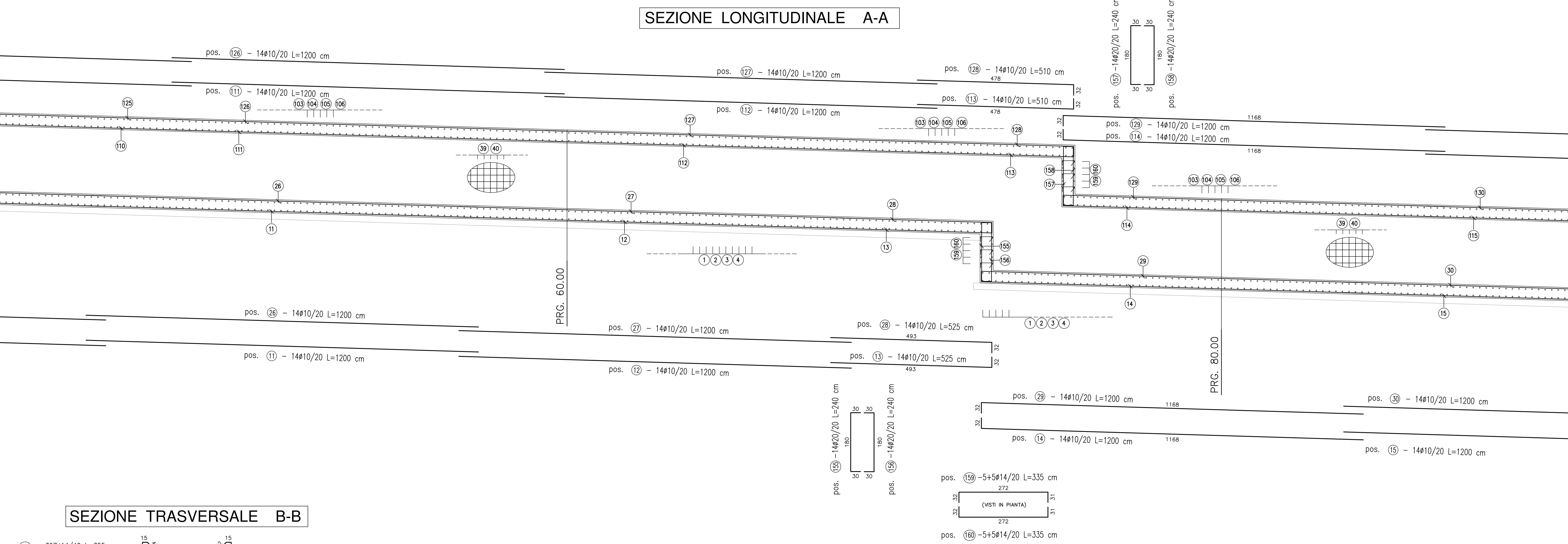


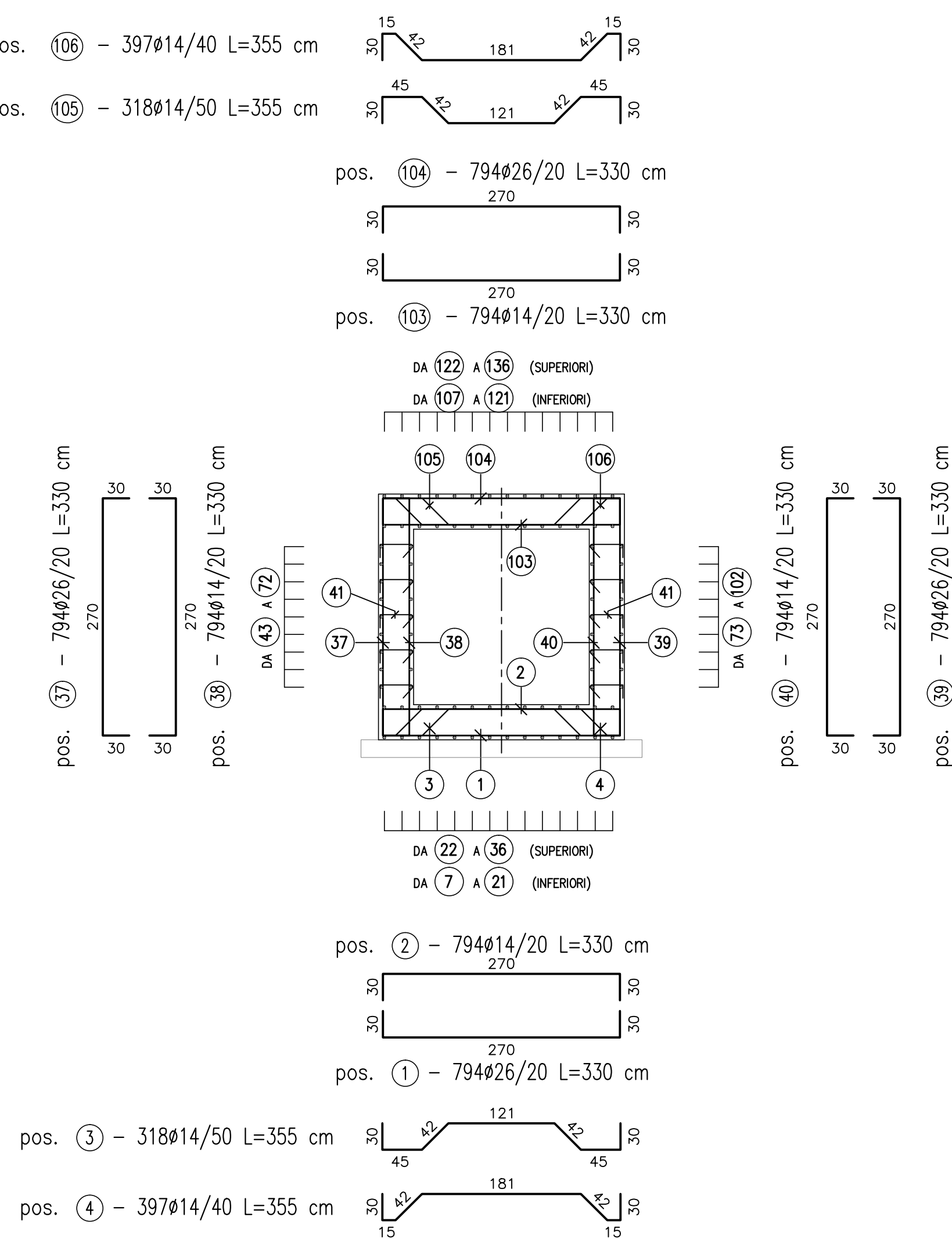
PIANTA



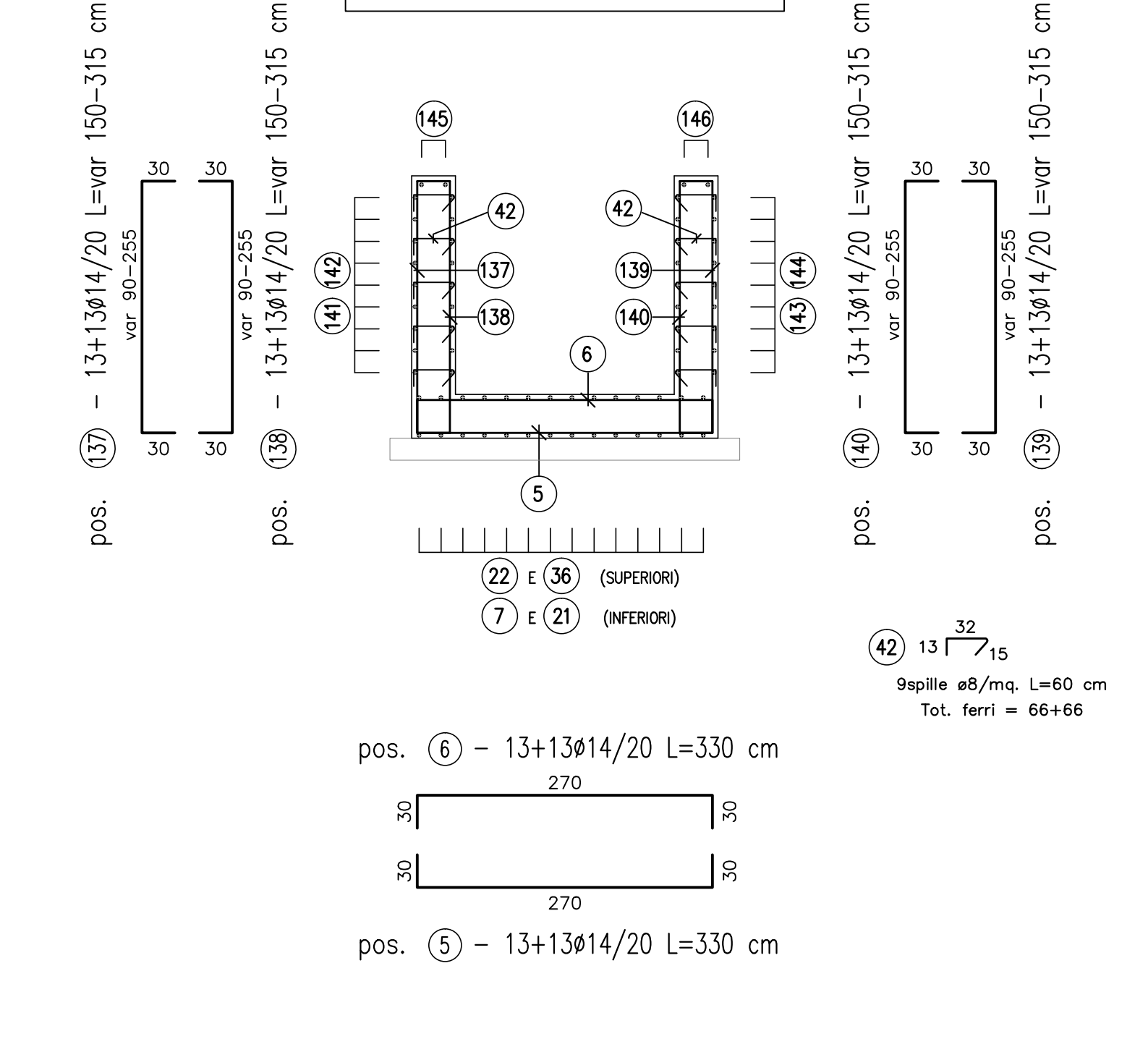
SEZIONE LONGITUDINALE A-A



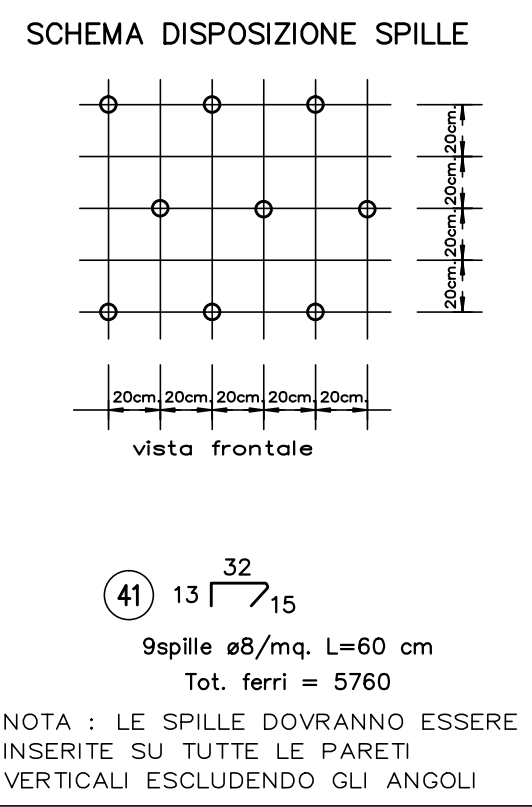
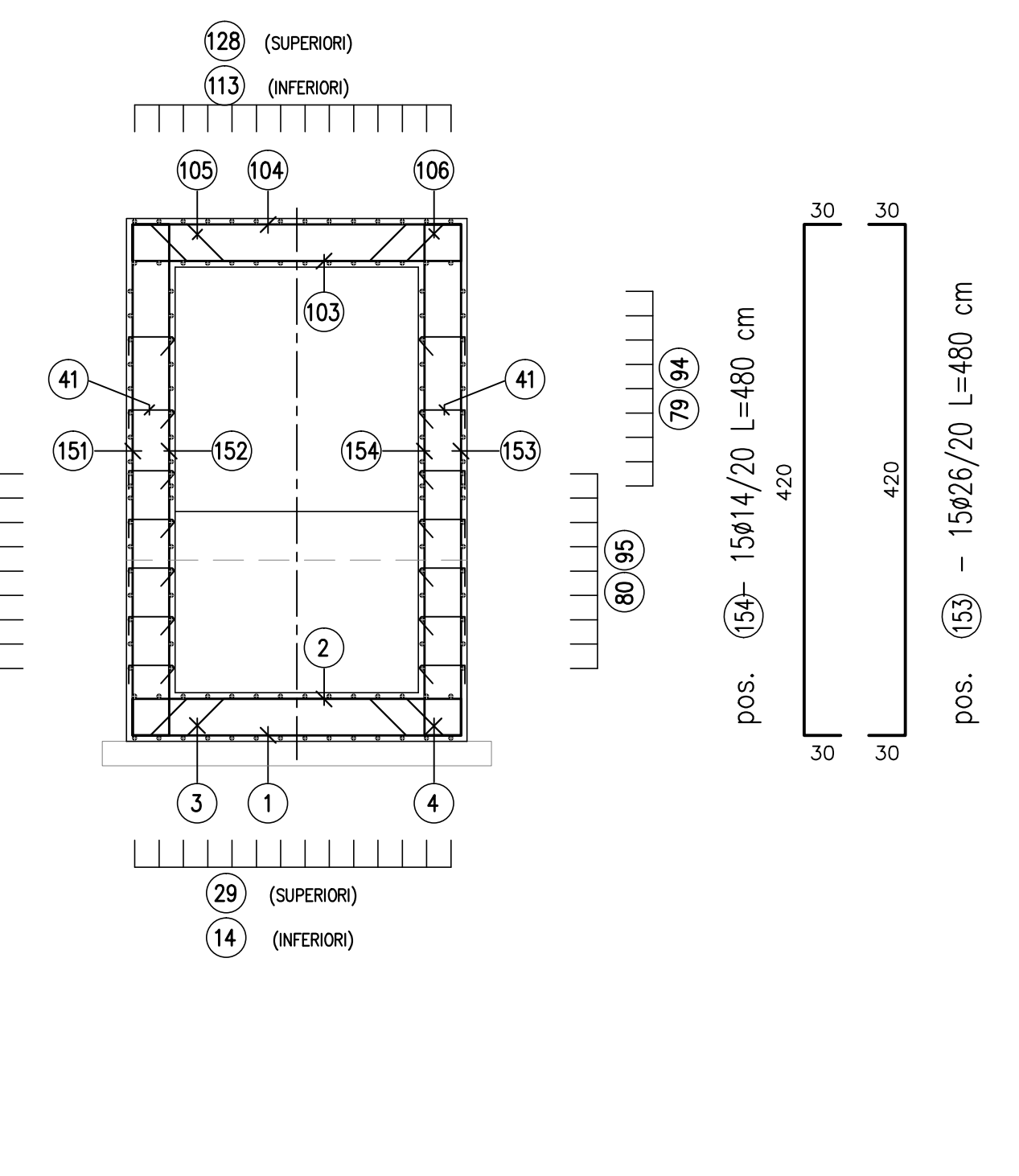
SEZIONE TRASVERSALE B-B



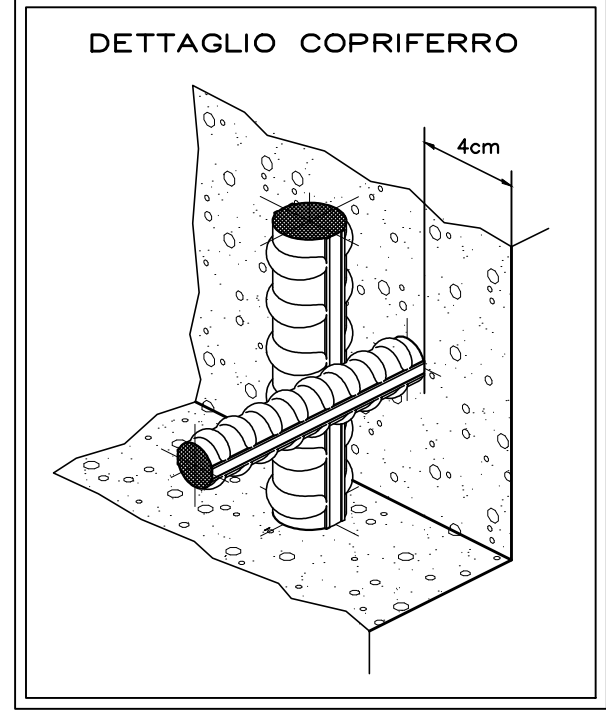
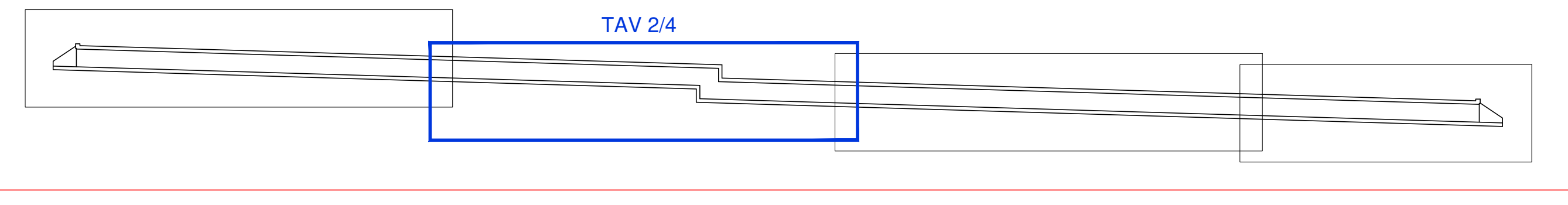
SEZIONE C-C



SEZIONE D-D



KEY-PLAN ARMATURA TOMBINO



NOTA: ULTIMA POSIZIONE INSERITA NEL DISEGNO (160)

SCALA DISEGNO 1:50

Table with columns: Descrizione, f, Posizione, n.ferr, zone, n.parr, lunghezza (m), lungh. tot. (m), peso tot. (kg). It lists 160 reinforcement positions with their respective specifications and weights.

Table with columns: Descrizione, f, Posizione, n.ferr, zone, n.parr, lunghezza (m), lungh. tot. (m), peso tot. (kg). It lists 160 reinforcement positions with their respective specifications and weights.

TOTALE kg 82865,00

ANAS Sp.A. Direzione Generale

DG 41/08 LAVORI DI COSTRUZIONE DEL 3° MEGALOTTO DELLA S.S. 106 JONICA - CAT. B - DALL'INNESTO CON LA S.S. 534 (km 365+150) A ROSETO CAPO SPULICO (km 400+000)

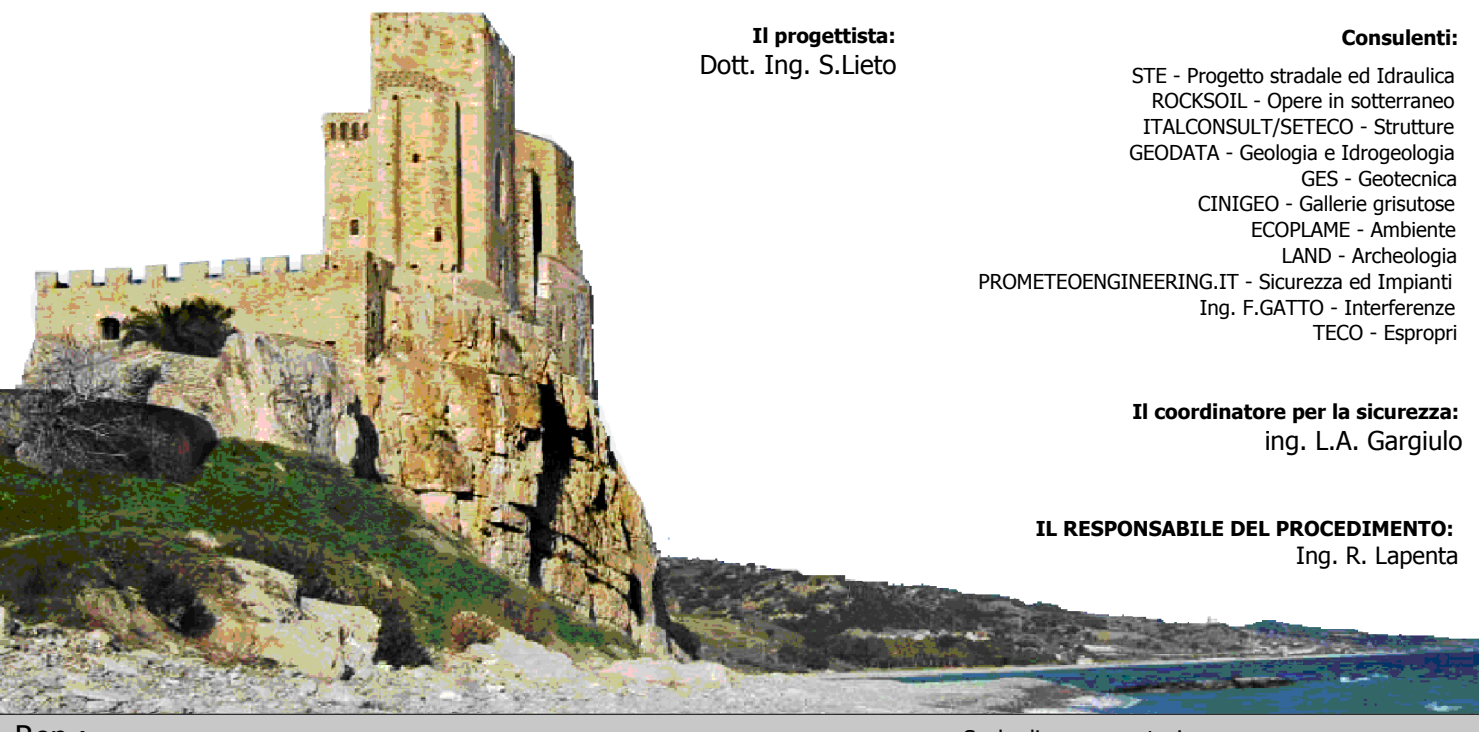
PROGETTO ESECUTIVO

OPERE D'ARTE - TOMBINI IDRAULICI TOMBINO SCATOLARE AL KM 16+000,00 - 2,00x2,00 Armatura 2/4

SIRJO S.C.p.A.

President: Dott. Arch. Maria Elena Cuzzocrea

ASTALDI salini impregio



IL RESPONSABILE DEL PROCEDIMENTO: Ing. R. Laporta

Table with columns: Rev., Data, Disegnato, Revisione, Ing. T. Zanella, Ing. F. M. La Camera, Ing. S. Lieto. It contains revision and approval information.