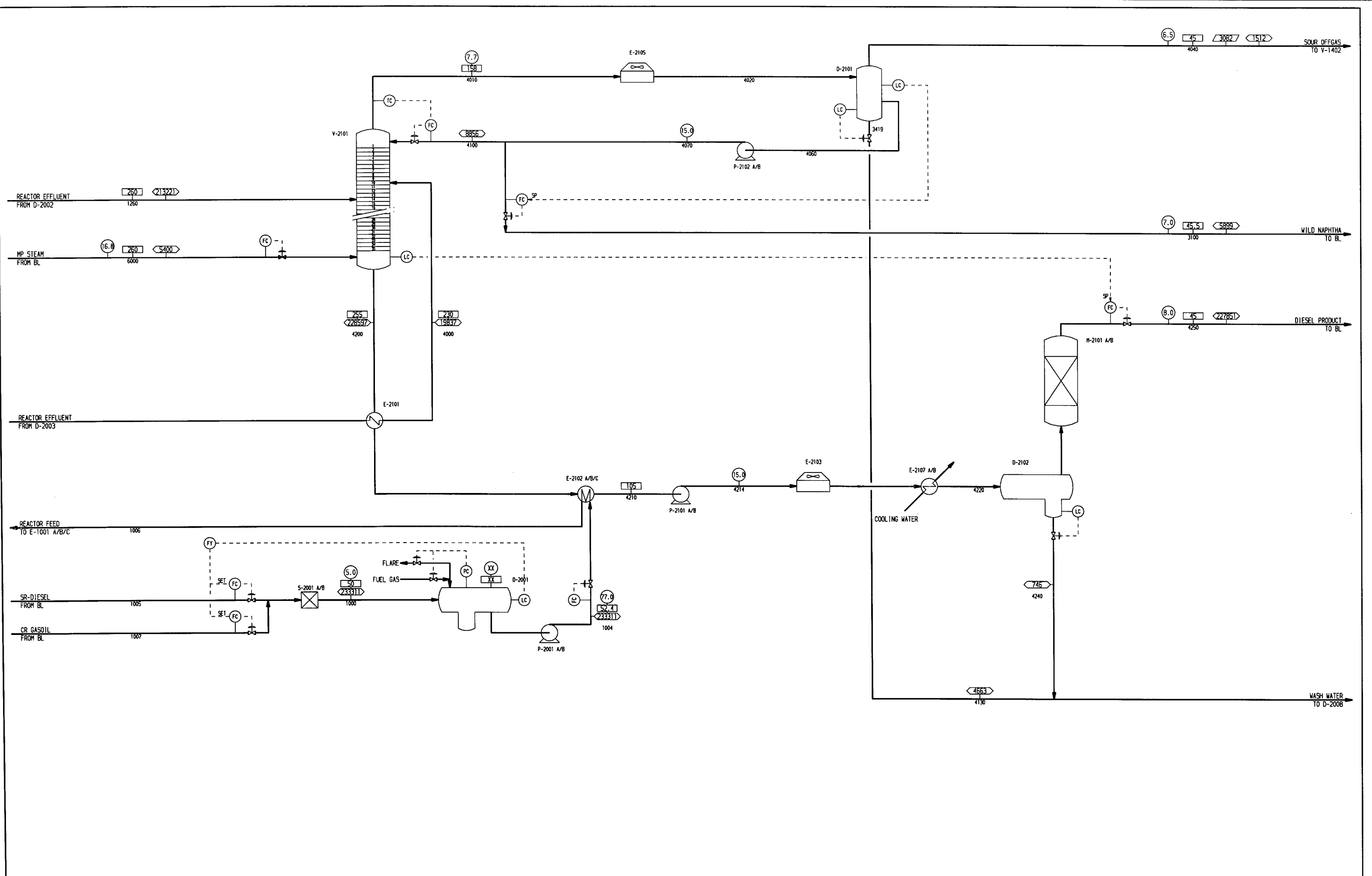


○ PRESSURE kg/cm² g
 □ TEMPERATURE °C
 ▽ FLOW m³/h or °C 700 mmHg
 ▽ FLOW kg/h

CALC. NO. PRO2-Chemb SOR.out

REV.	DESCRIPTION	DATE	BY	CHKD.	APPR.
1					
2					
3					
4					
5					

HALDOR TOPSØE A/S COMPANY DESIGN		DATE: 02-SEP-2004 DESIGNED: HOS/AND ISSUED FOR PROPOSAL NO. 1279951 SHEET NO. 41
AGIP PETROLI TARANTO PLUS DIESEL ULTRA LOW SULFUR DIESEL HYDROTREATER REACTOR AND COMPRESSOR UNIT SOR		JOB NO.: 5-00800 PFD SHEET NO.: 1279956



○ PRESSURE kg/cm² g
 □ TEMPERATURE °C
 ▽ FLOW mol/h (0°C 760 mmHg)
 ▸ FLOW kg/h

CALC. NO. PRO2-Ghemb SOR.out

REV.	DESCRIPTION	DATE	BY	CHKD.	APP.
1					
2					
3					
4					
5					

HALDOR TOPSØE A/S COMPANY DENMARK		DATE: 10-SEP-2005 DES/AMD: RES/AMD ISSUED FOR PROPOSAL JOB NO.: 1279944 SHEET: 41 JOB NO.: 5-00800 DESIGN: PFD SHEET NO.: 1279957
THIS DOCUMENT CONTAINS TRADE SECRET AND PROPRIETARY INFORMATION, THE PROPERTY OF HALDOR TOPSØE A/S, AND IS ISSUED ON THE CONDITION THAT IT IS RECEIVED AND HELD IN CONFIDENCE. NEITHER IT NOR THE INFORMATION HEREIN SHALL BE REPRODUCED, SOLD, LOANED, DISCLOSED OR USED FOR ANY PURPOSE OTHER THAN THAT FOR WHICH IT HAS BEEN ISSUED WITHOUT WRITTEN AUTHORITY OF HALDOR TOPSØE A/S.		AGIP PETROLI TARANTO PLUS PROJEKT ULTRA LOW SULFUR DIESEL HYDROTREATER FEED BLENDING AND FRACTIONATION UNIT SOR