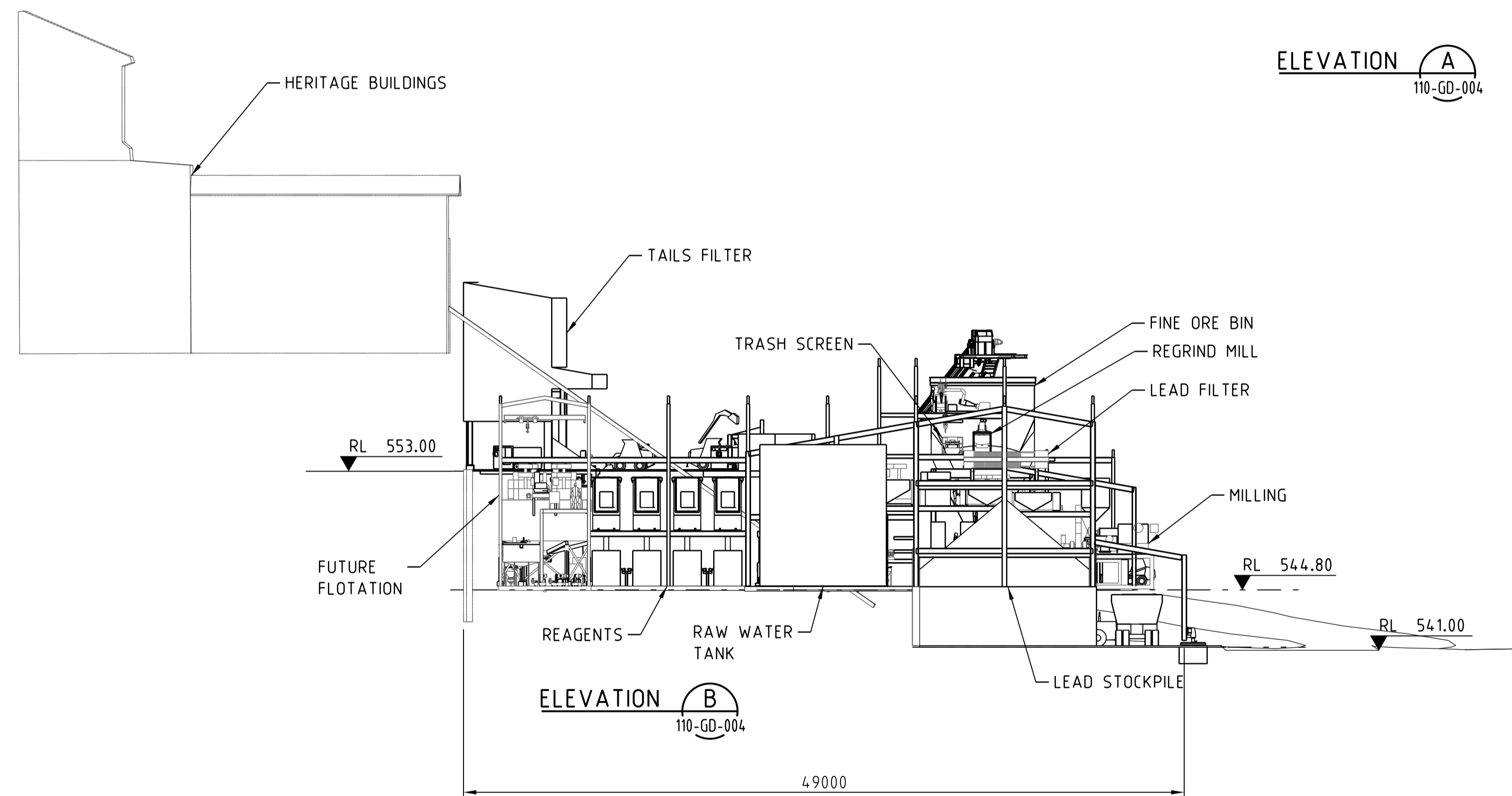
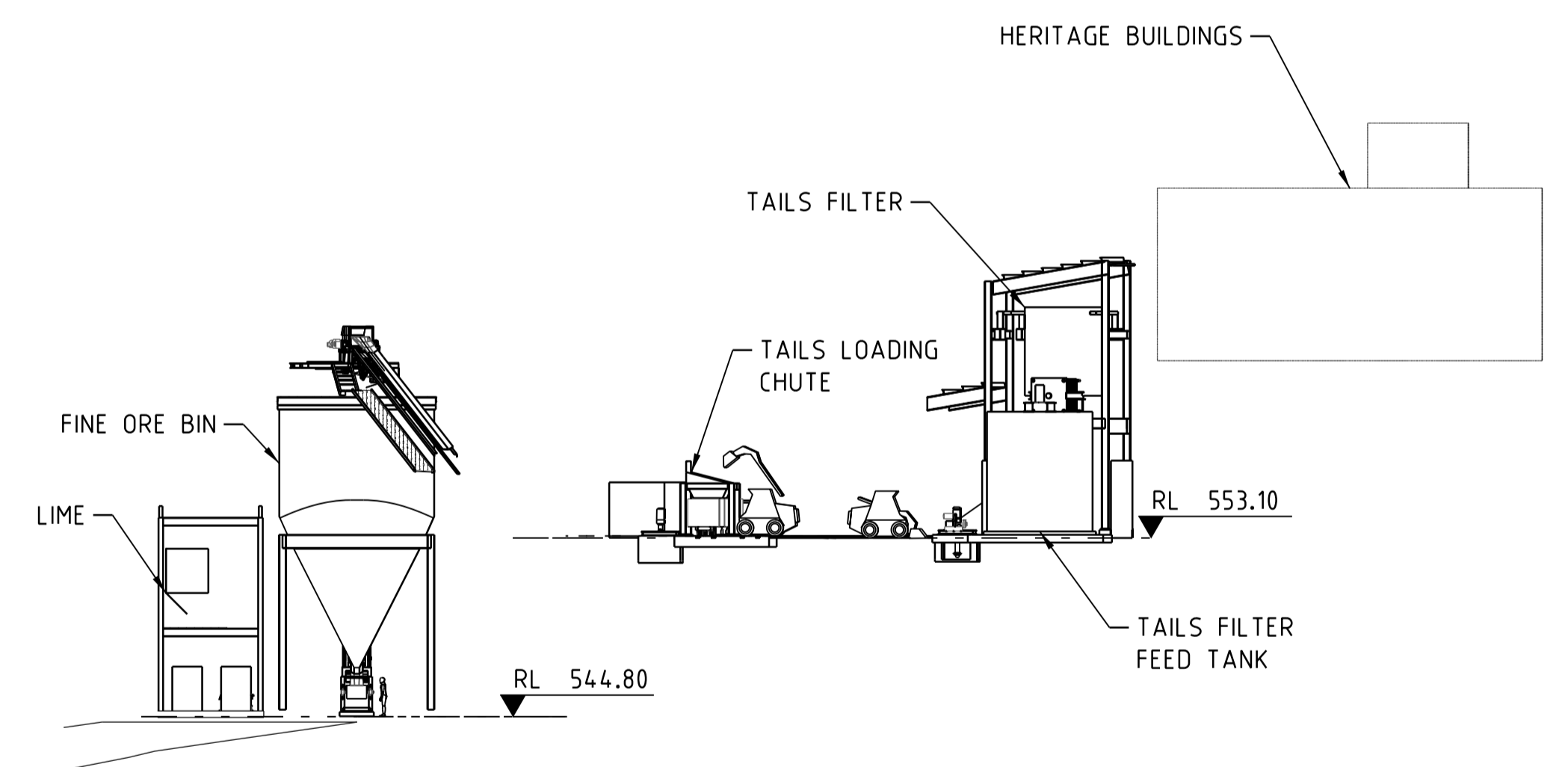


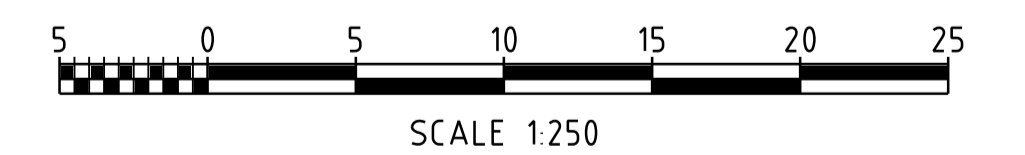
ELEVATION **A**  
110-GD-004



ELEVATION **B**  
110-GD-004



SECTION **C**  
110-GD-004



DRG No	REFERENCE DRAWINGS	REV	DATE	DESCRIPTION	DRN	CHK'D	DESIGN ENG.	LEAD ENG.	DESIGN APP'D	PROJ. APP'D	CLIENT APP'D
XX	XXX	B	02NOV18	ISSUED FOR STUDY	JAL		JS	RS			
		A	26OCT18	ISSUED FOR REVIEW	EL		JS	RS			

CLIENT: ALTA ZINC LIMITED  
 PROJECT: GORNO ZINC PROJECT

**Lycopodium**  
 Lycopodium Minerals Pty Ltd ABN: 34 055 880 209  
 Level 5, 1 Adelaide Terrace, East Perth, Western Australia 6004  
 T: +61(0) 8 6210 5222 www.lycopodium.com.au

**ALTA ZINC LTD**

This drawing and its contents are confidential, are subject to return on demand and may not be copied or disclosed to any third party or used directly or indirectly for any other purpose than as determined in writing by Lycopodium Minerals Pty Ltd.

DRAWN	CHECKED	DESIGN ENG.	LEAD ENG.	DESIGN APP'D	PROJ. APP'D	CLIENT APP'D
TJJ						

DRAWING TITLE: TREATMENT PLANT - GENERAL SURFACE PLANT ELEVATIONS AND SECTION

SCALE: 1:250	JOB No: 2039	DRG No: 110-GD-005	REV: B
DATE: 23OCT18			