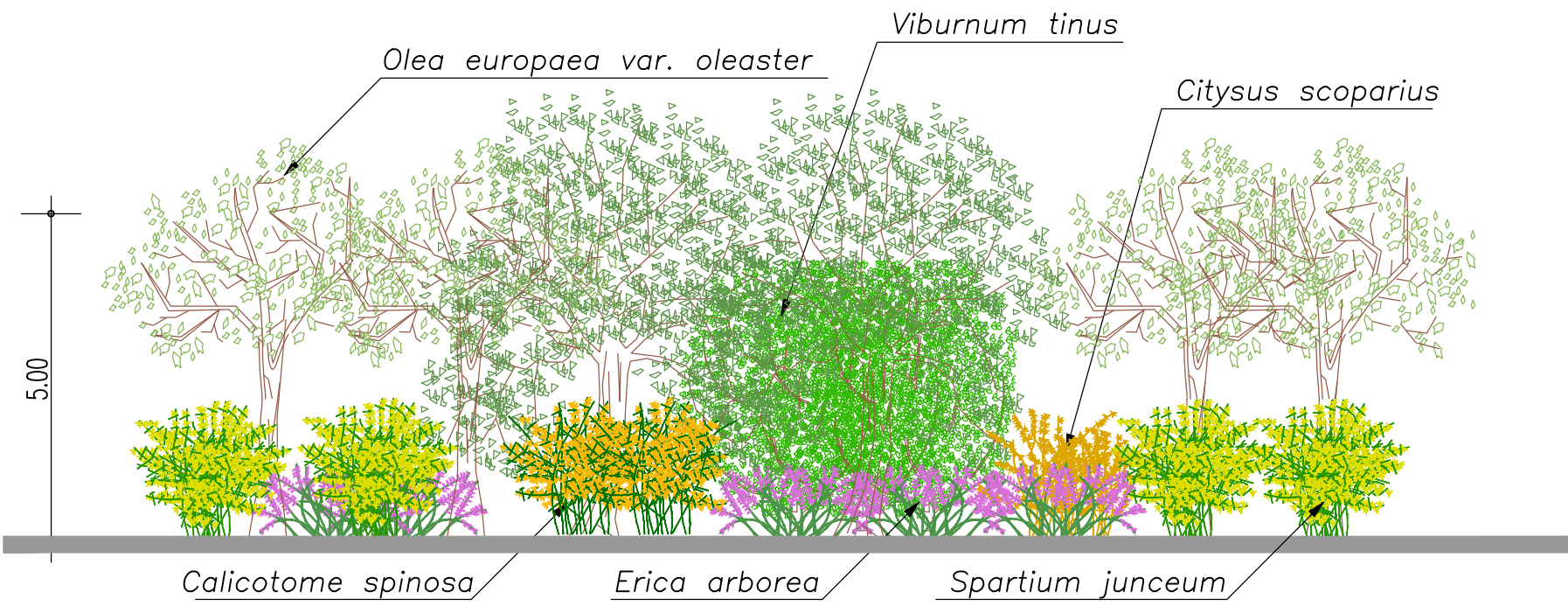
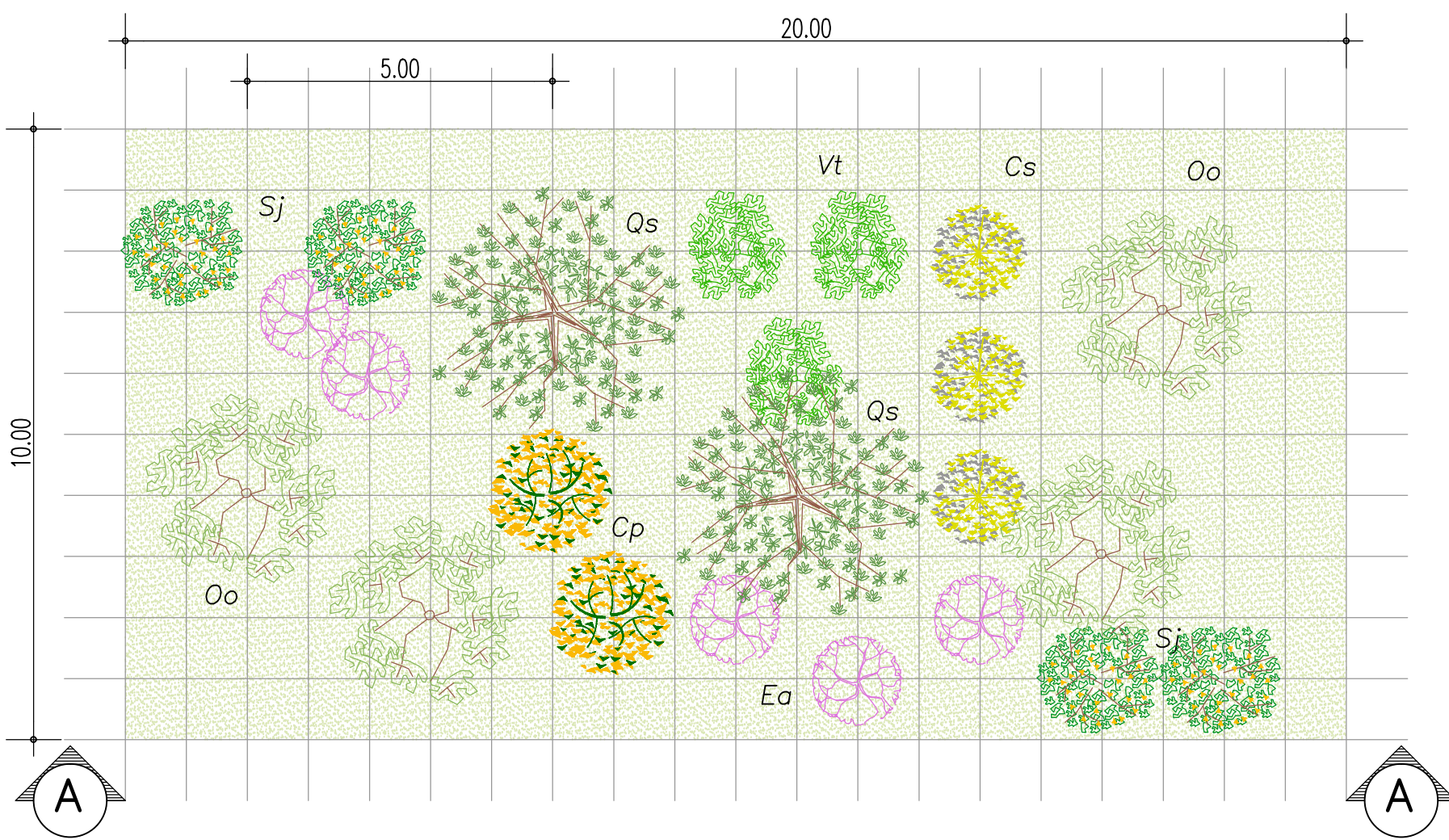


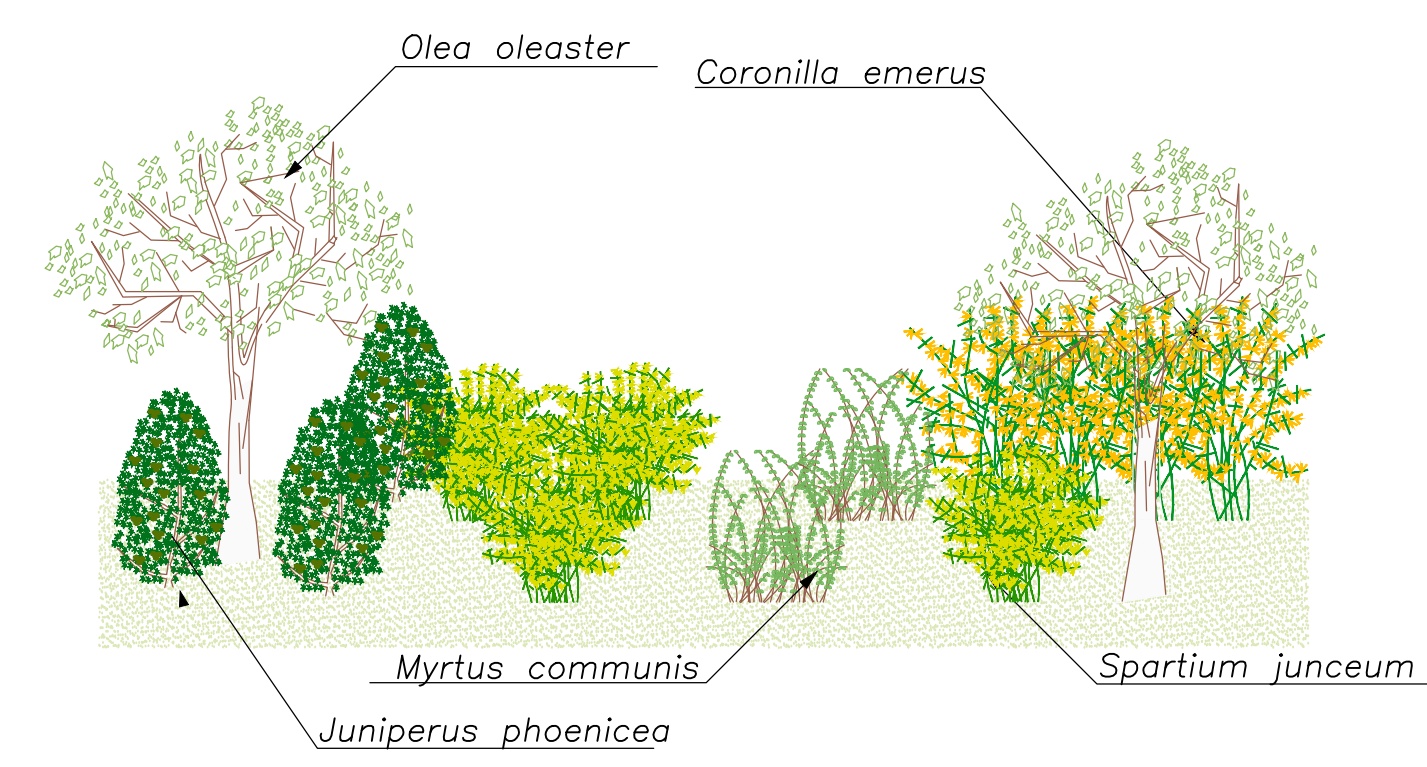
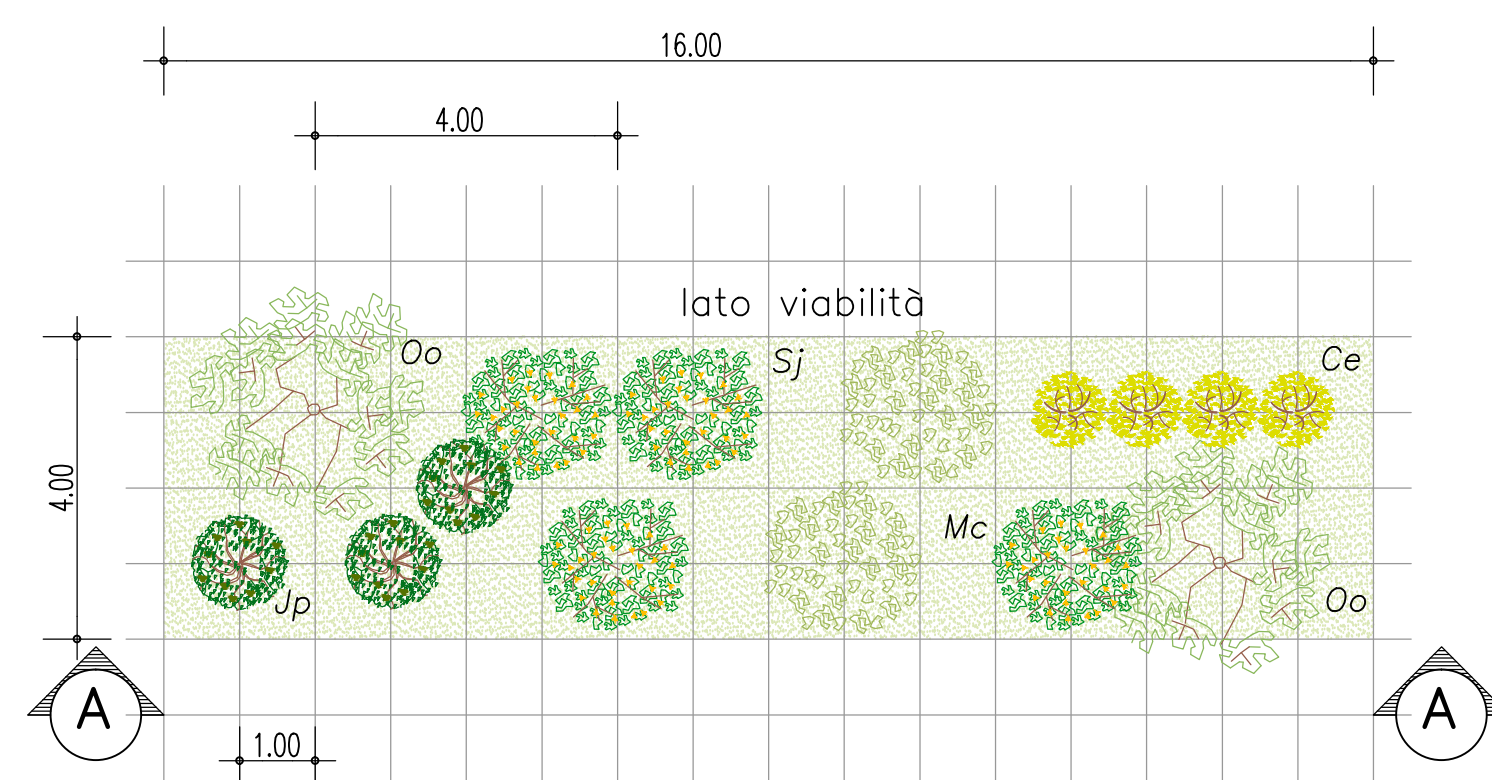
MACCHIA ARBOREO ARBUSTIVA IN CONTESTO AGRICOLO (MAAA)
scala 1:100

Vt *Viburnum tinus* (3) Sj *Spartium junceum* (4) Cp *Calicotome spinosa* (2)
Qs *Quercus suber* (2) Oo *Olea europaea var. oleaster* (4)
Cs *Cytisus scoparius* (3) Ea *Erica arborea* (5)



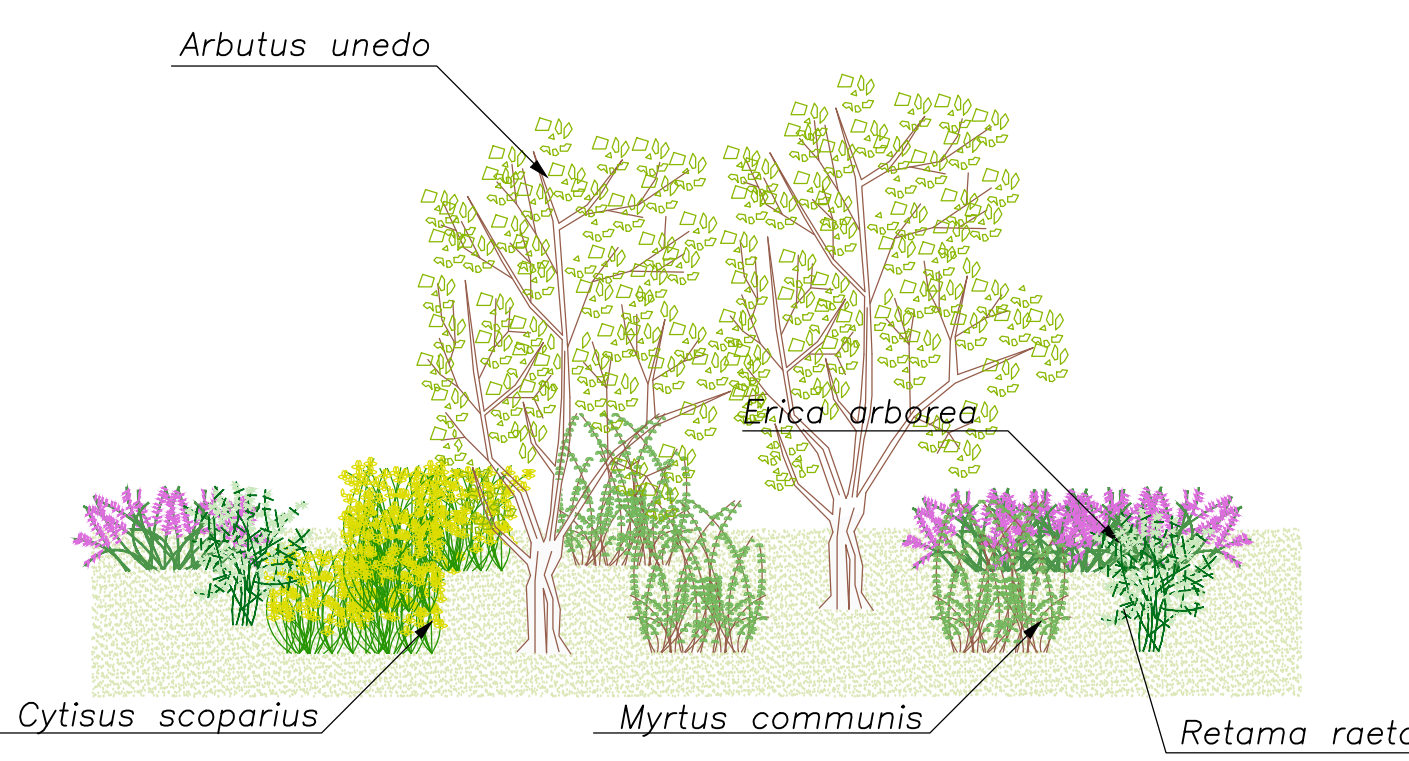
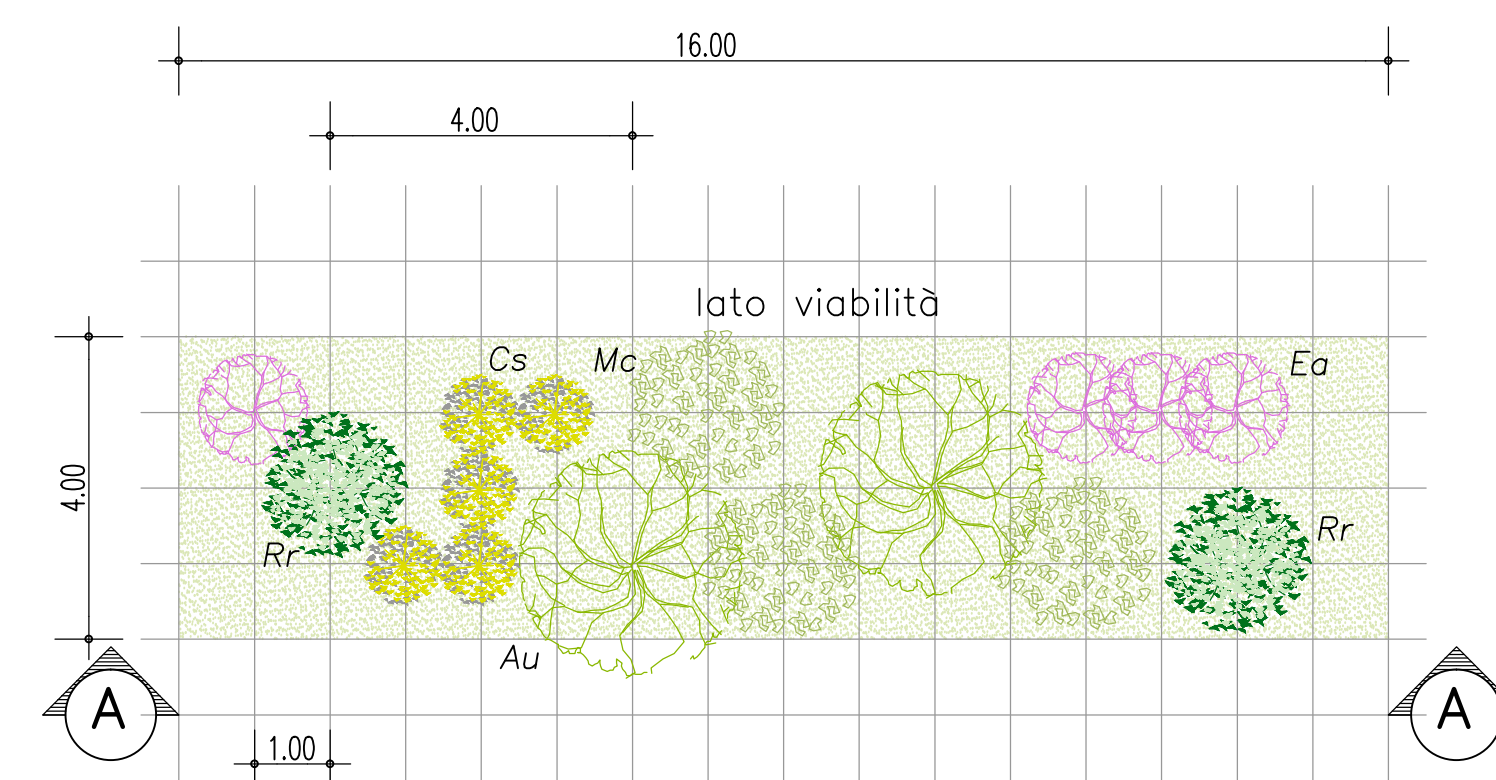
FASCIA ARBOREO ARBUSTIVA IN CONTESTO AGRICOLO (FAAA)
scala 1:100

Oo *Olea europaea var. oleaster* (2) Sj *Spartium junceum* (4)
Ce *Coronilla emerus* (4) Jp *Juniperus phoenicea* (3)
Mc *Myrtus communis* (2)



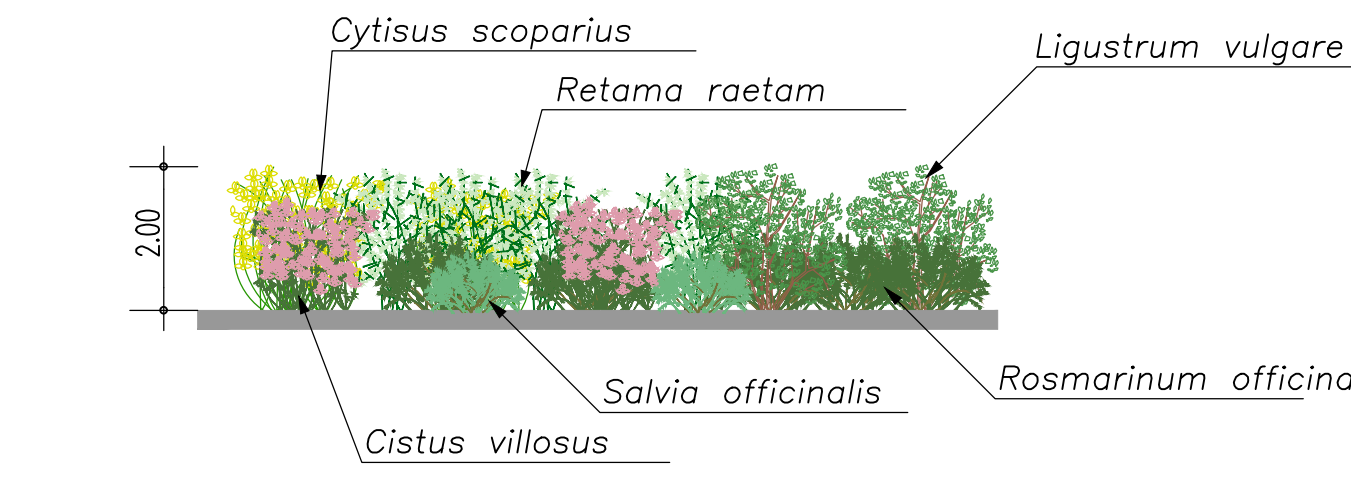
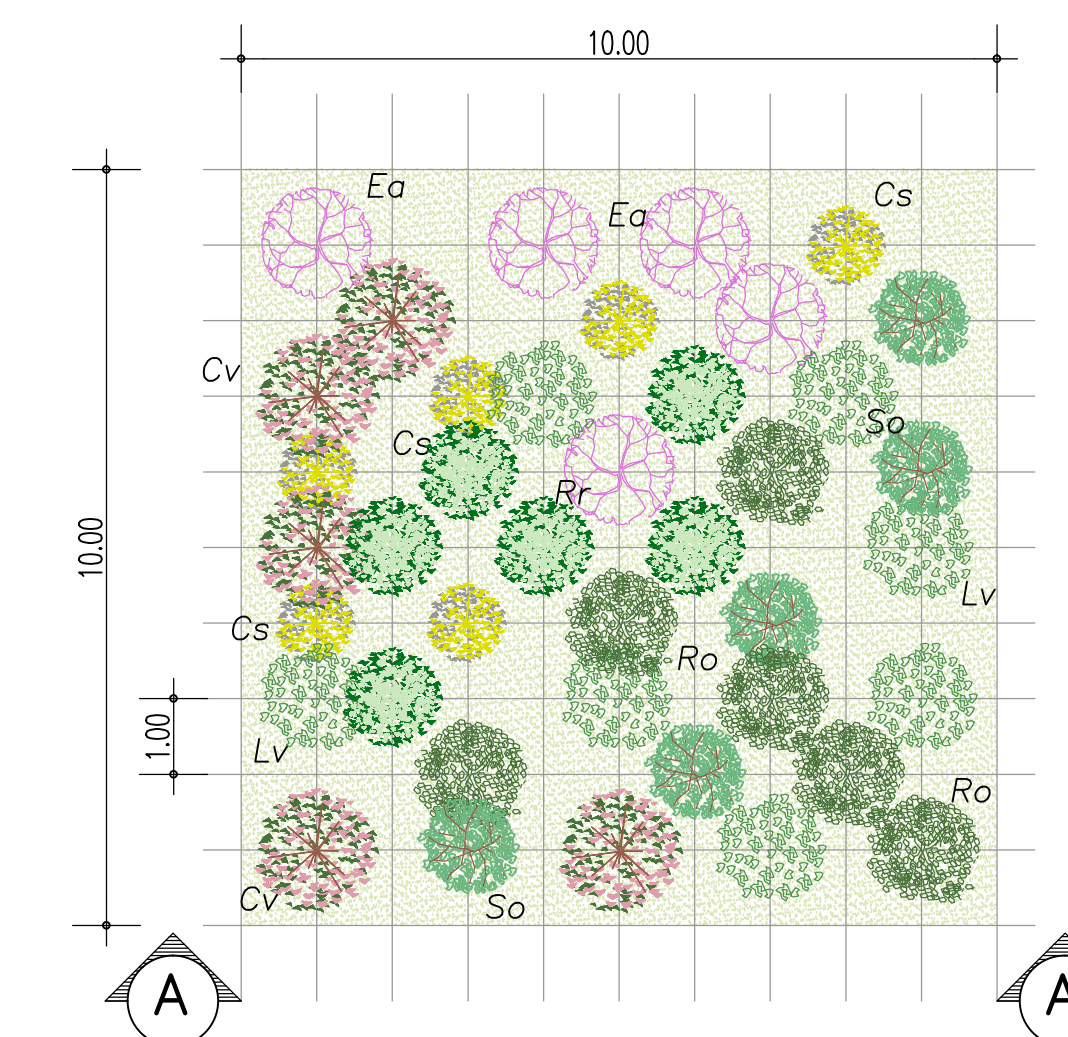
FASCIA ARBUSTIVA ALTA IN CONTESTO NATURALE (FAAN)
scala 1:100

Au *Arbutus unedo* (2) Ea *Erica arborea* (4)
Cs *Cytisus scoparius* (5) Mc *Myrtus communis* (3)
Rr *Retama raetam* (2)



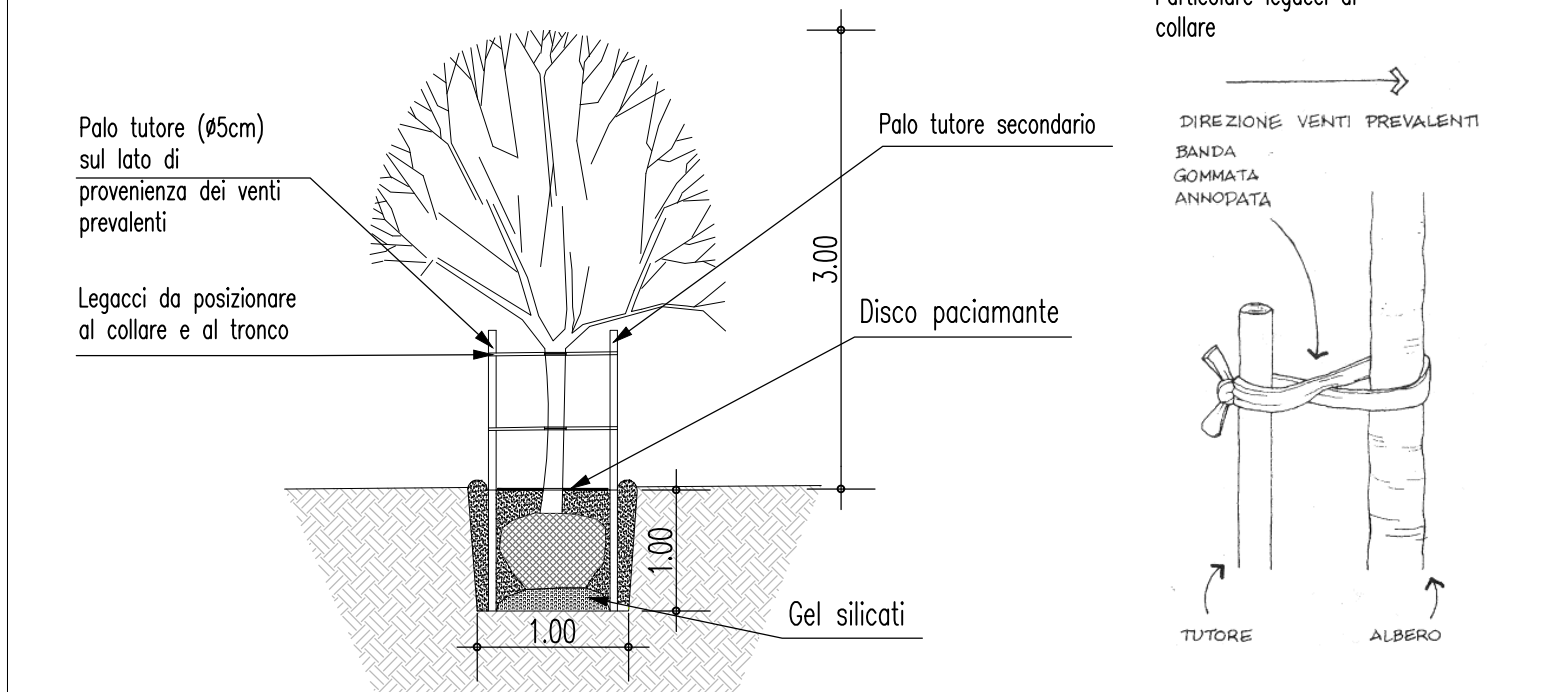
MACCHIA ARBUSTIVA MONOSPECIFICA DENSA (MAD)
scala 1:100

Ea *Erica arborea* (5) Lv *Ligustrum vulgare* (7)
Cv *Cistus villosus* (5) Cs *Cytisus scoparius* (6)
Ro *Rosmarinum officinalis* (6) Rr *Retama raetam* (6)
So *Salvia officinalis* (5)

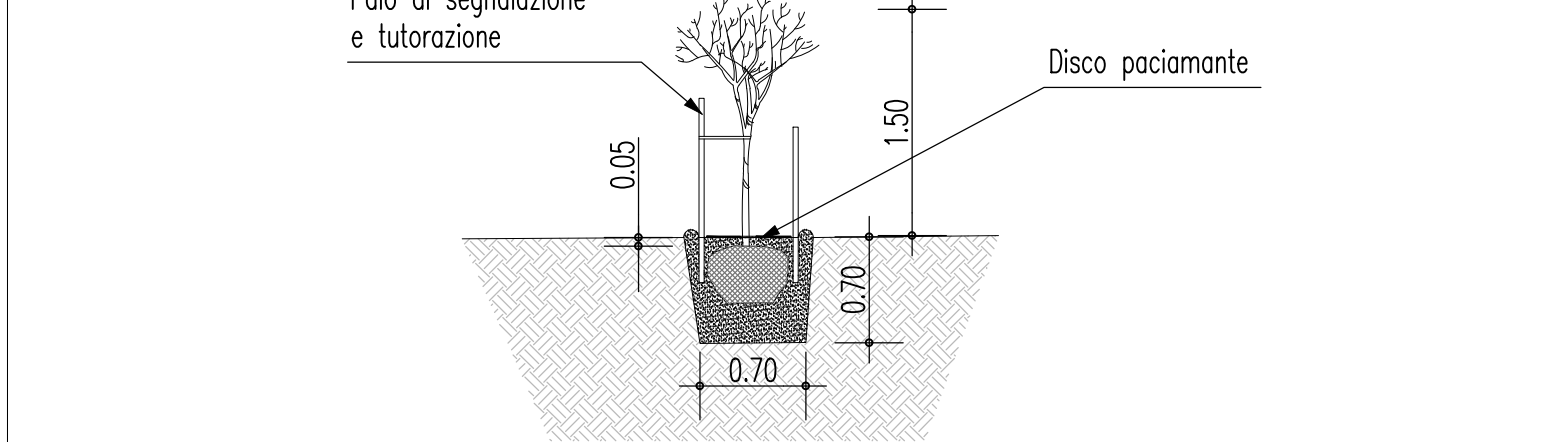


NOTE GENERALI

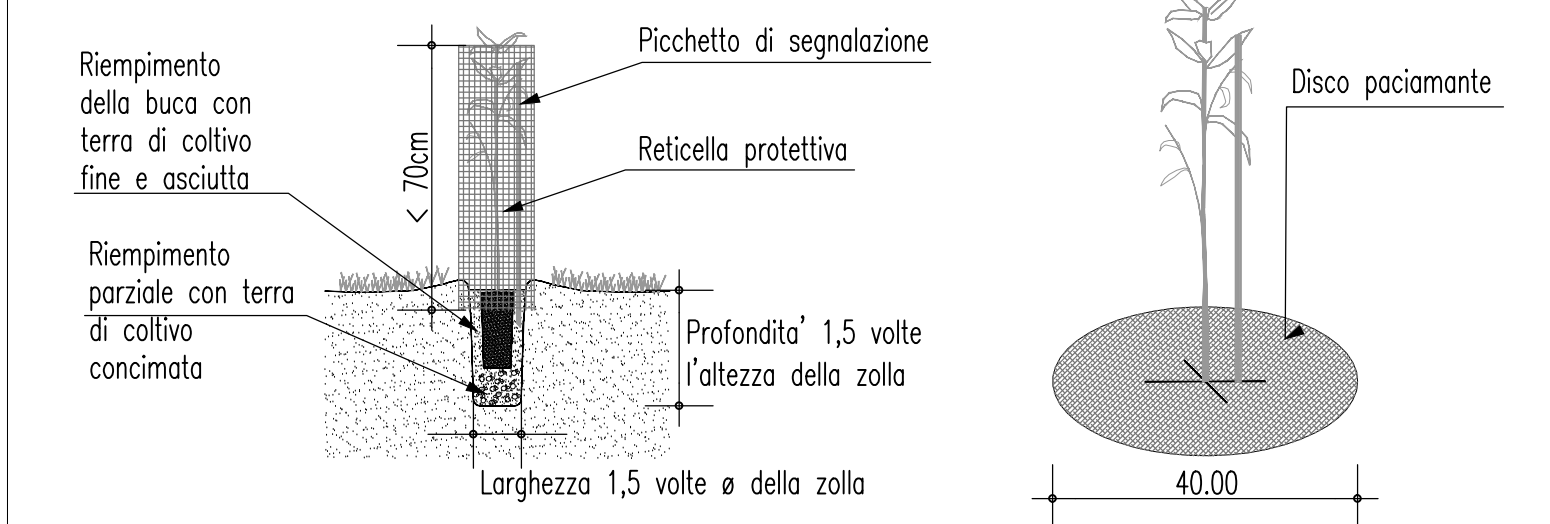
MESSA DIMORA DEGLI ESEMPLARI DEI NUCLEI ARBOREI
scala 1:50



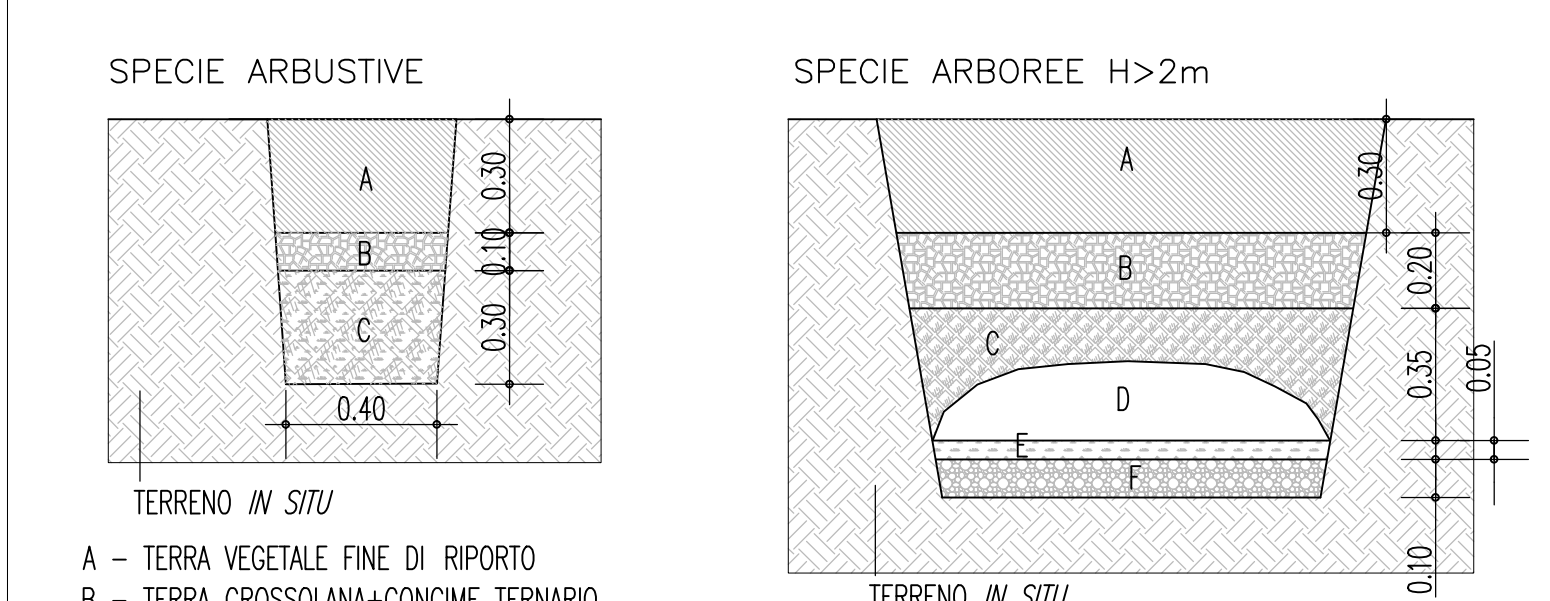
MESSA DIMORA DELLE SPECIE ARBOREE
scala 1:50



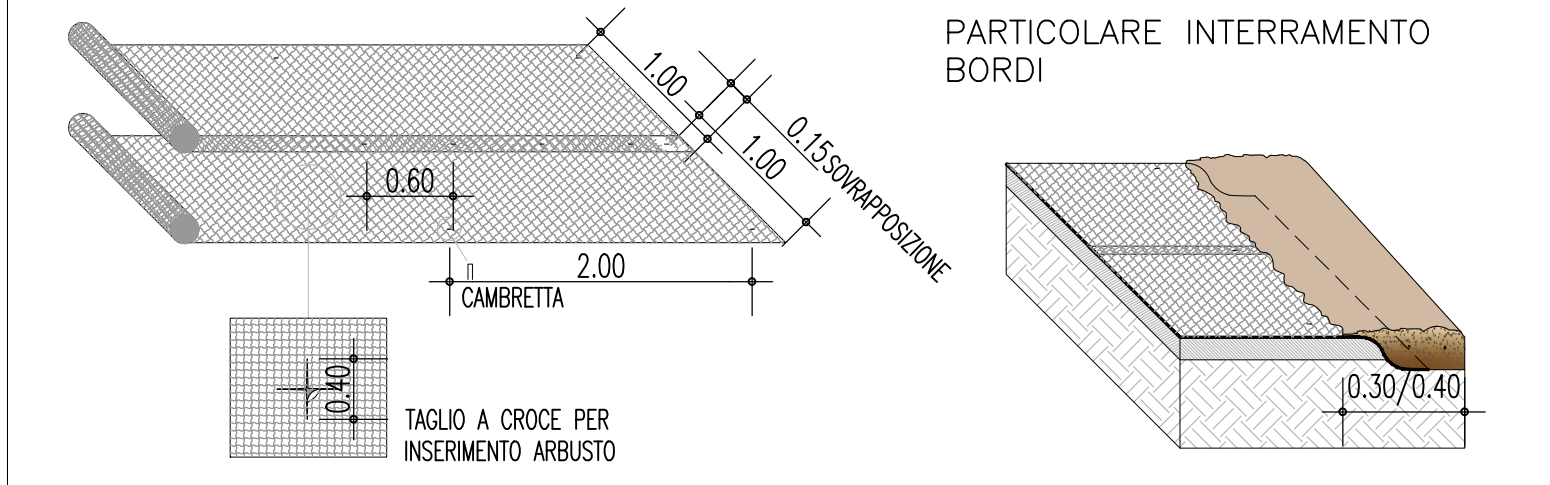
MESSA DIMORA DELLE SPECIE ARBUSTIVE POSIZIONAMENTO BIODISCO
scala 1:20



STRATIGRAFIA BUCHE PER MESSA DIMORA
scala 1:20

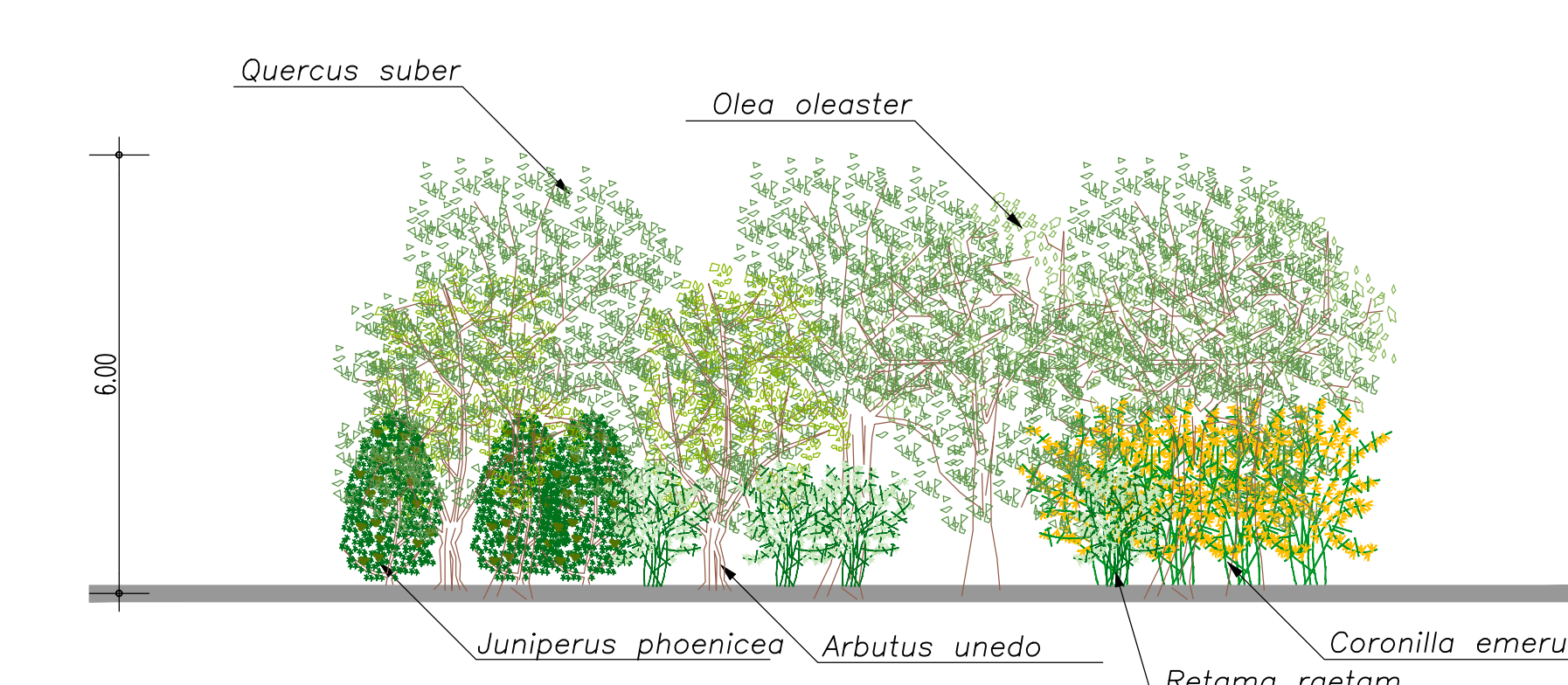
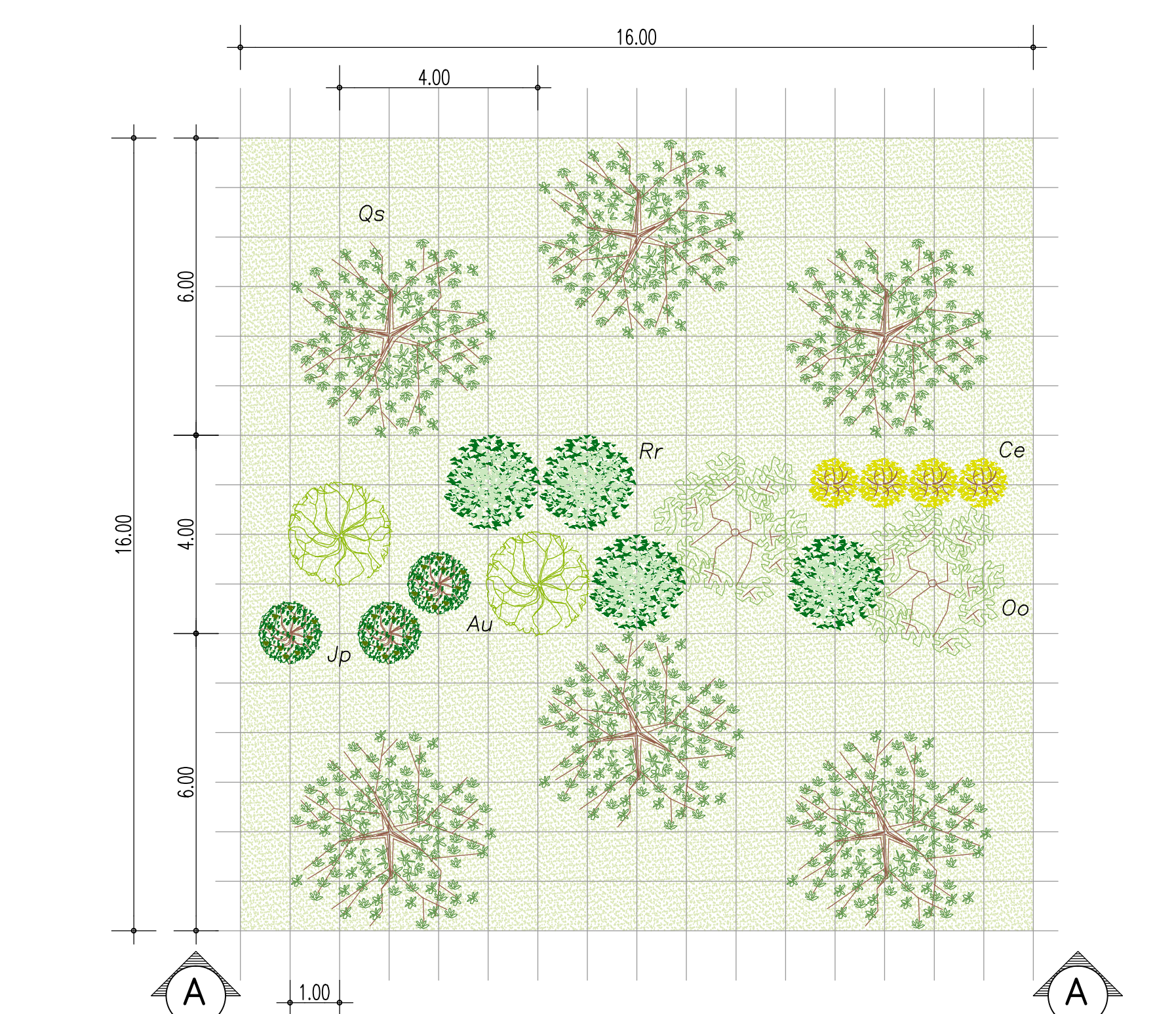


POSA DEL TELO PACCIAMANTE BIODEGRADABILE
scala 1:50



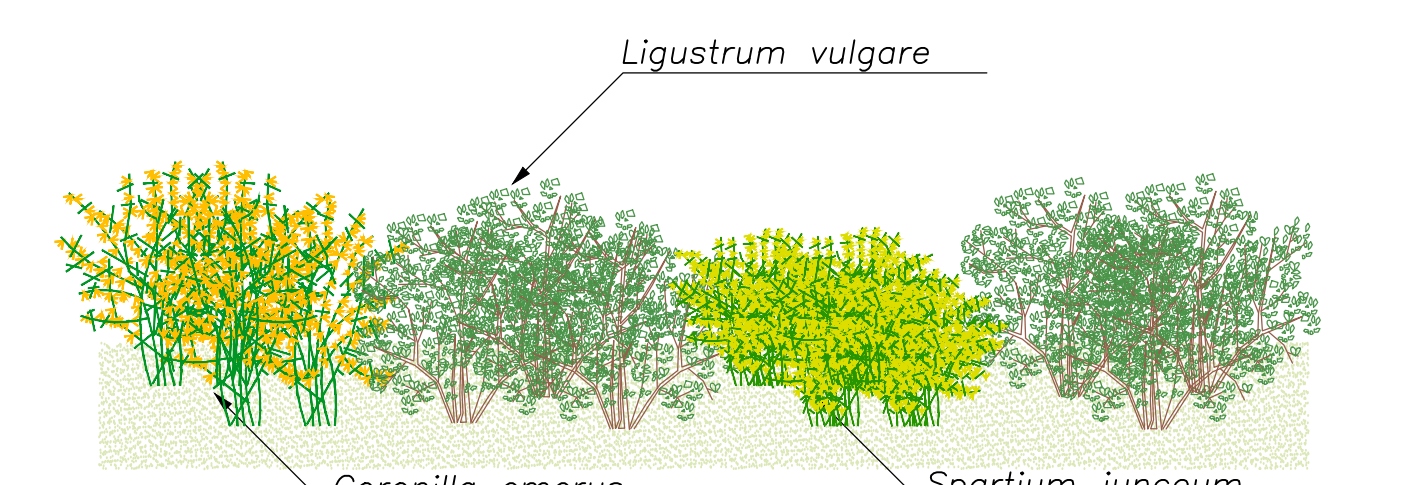
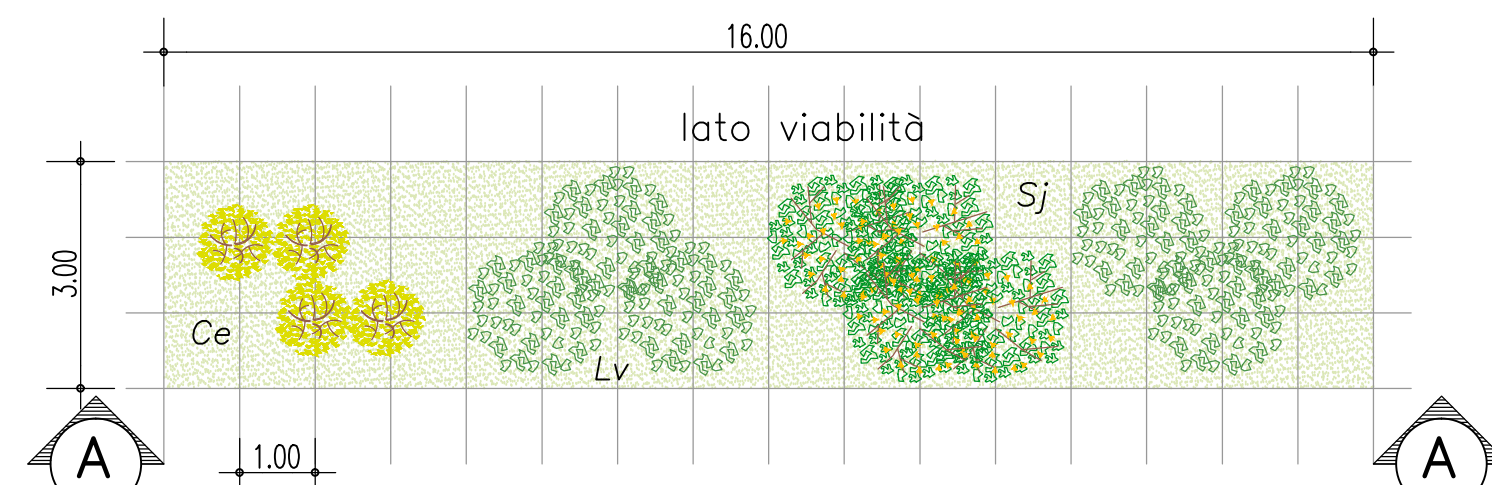
MACCHIA ARBOREO ARBUSTIVA IN CONTESTO NATURALE (MAAN)
scala 1:100

Oo *Olea europaea var. oleaster* (2) Au *Arbutus unedo* (2) Qs *Quercus suber* (6)
Ce *Coronilla emerus* (4) Rr *Retama raetam* (4) Jp *Juniperus phoenicea* (3)



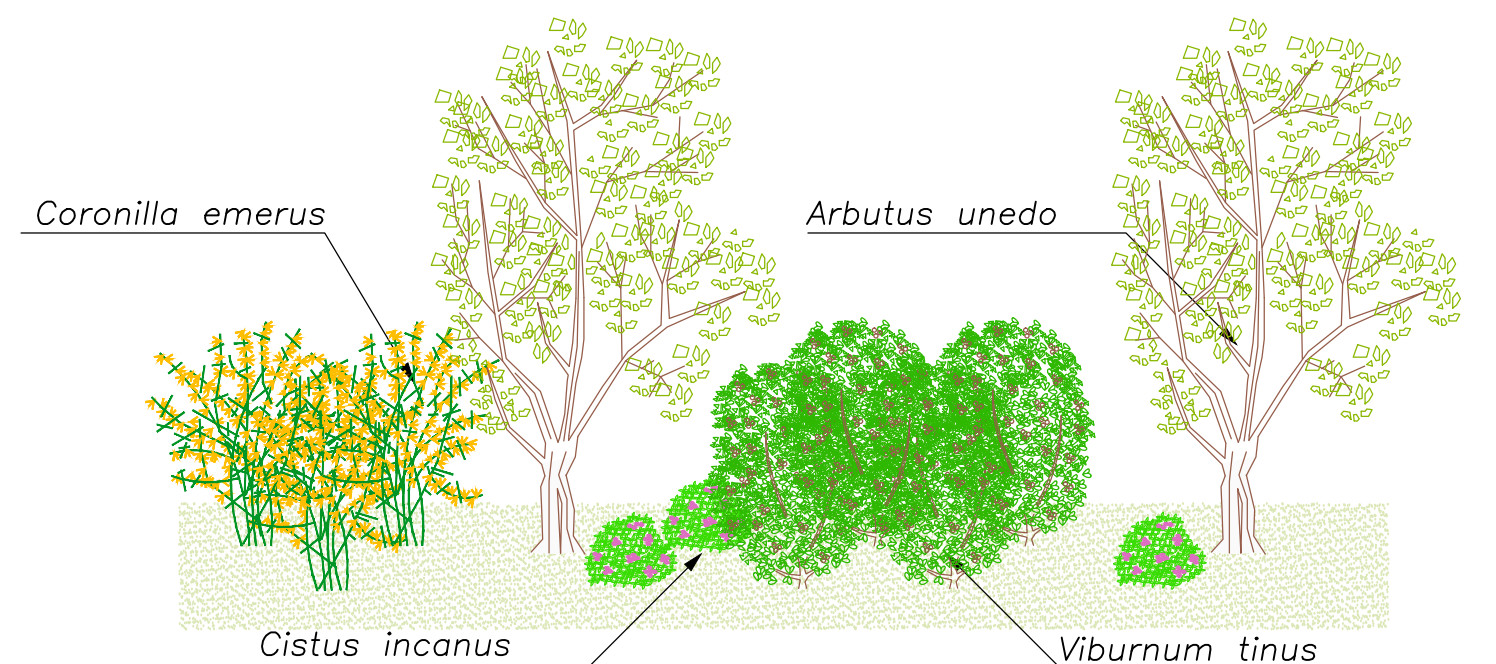
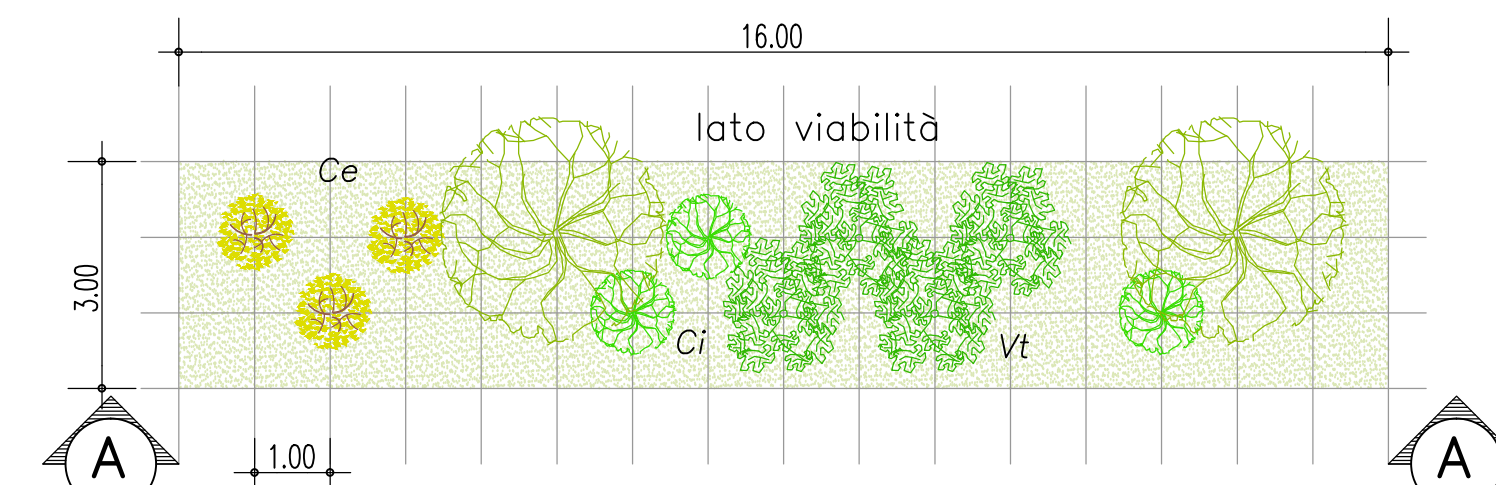
FASCIA ARBUSTIVA IN CONTESTO AGRICOLO (FAA)
scala 1:100

Ce *Coronilla emerus* (4) Lv *Ligustrum vulgare* (6)
Sj *Spartium junceum* (4)



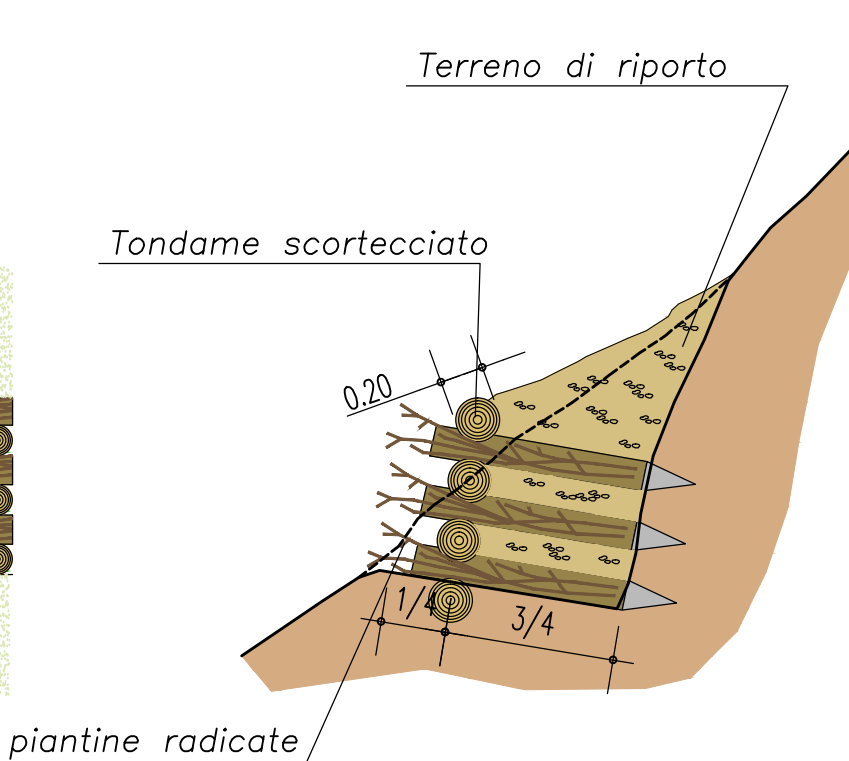
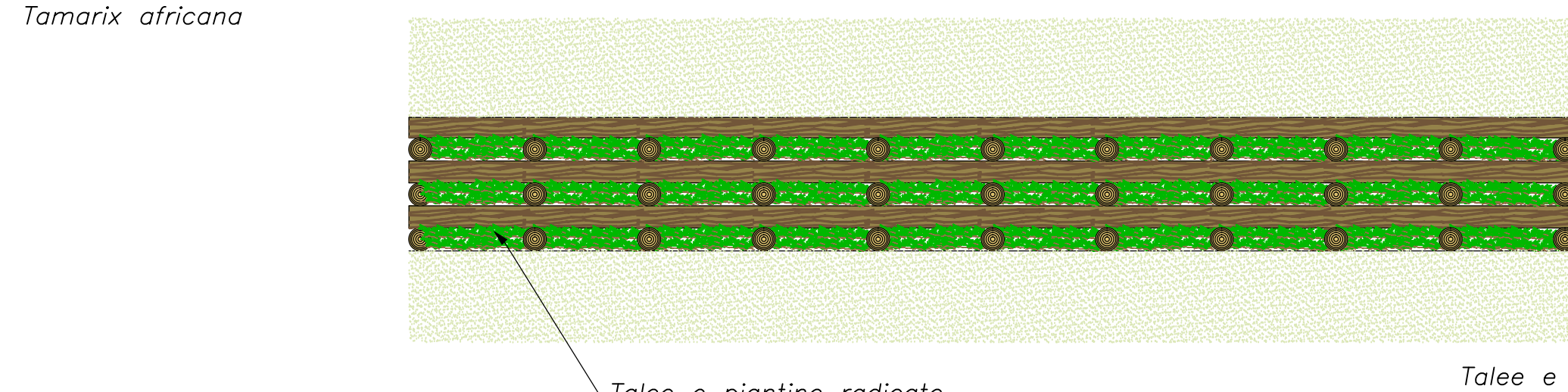
FASCIA ARBUSTIVA IN CONTESTO NATURALE (FAN)
scala 1:100

Ce *Coronilla emerus* (3) Ci *Cistus incanus* (3)
Au *Arbutus unedo* (2) Vt *Viburnum tinus* (4)



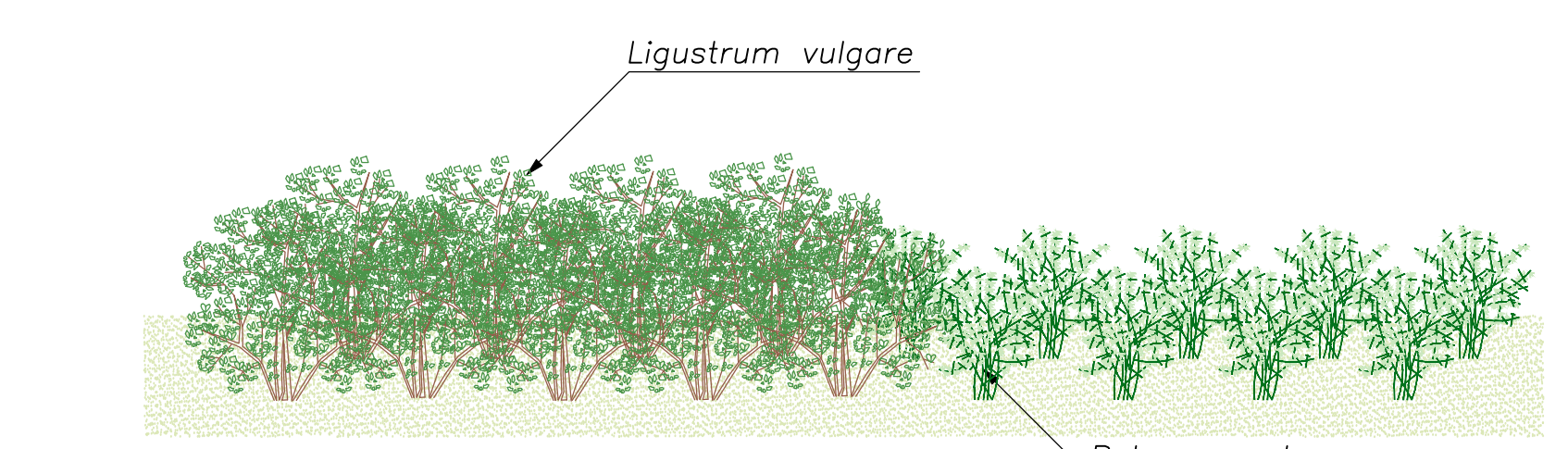
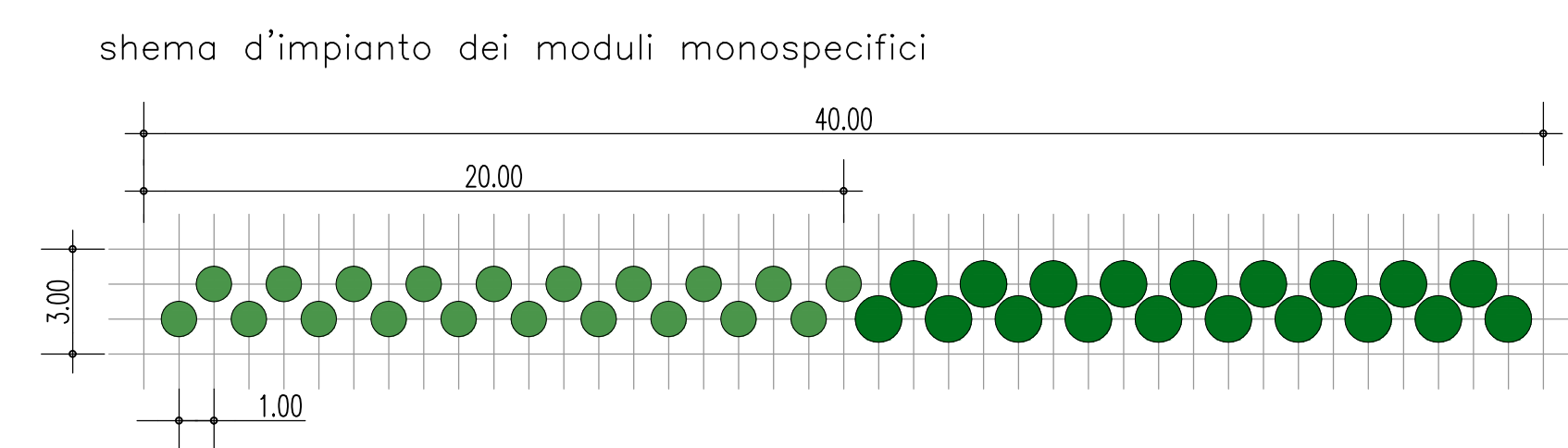
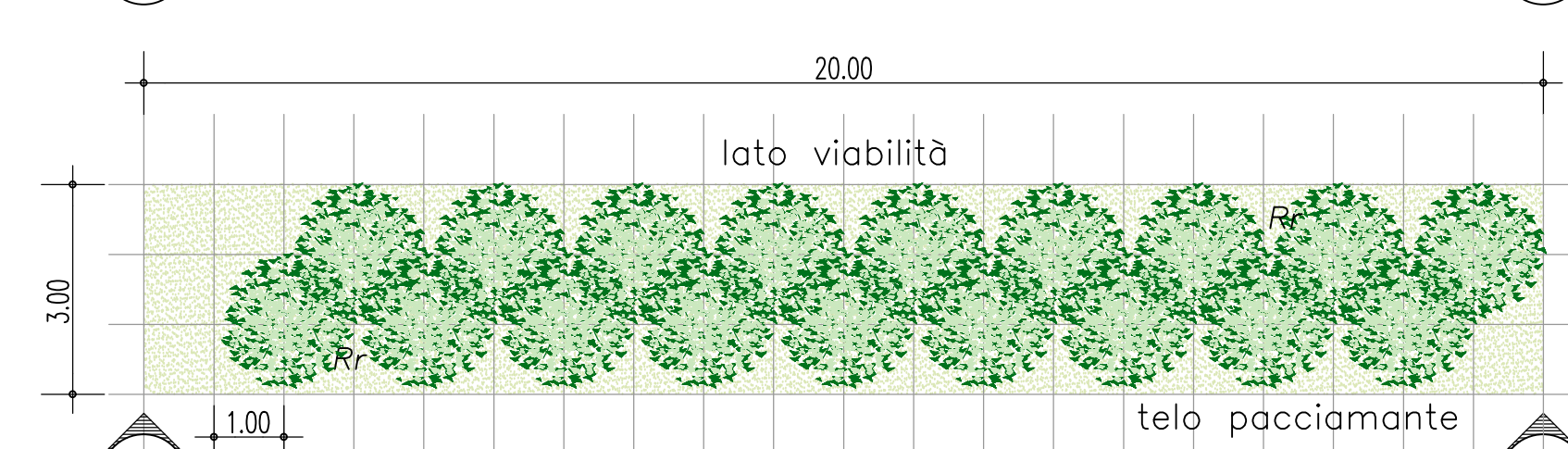
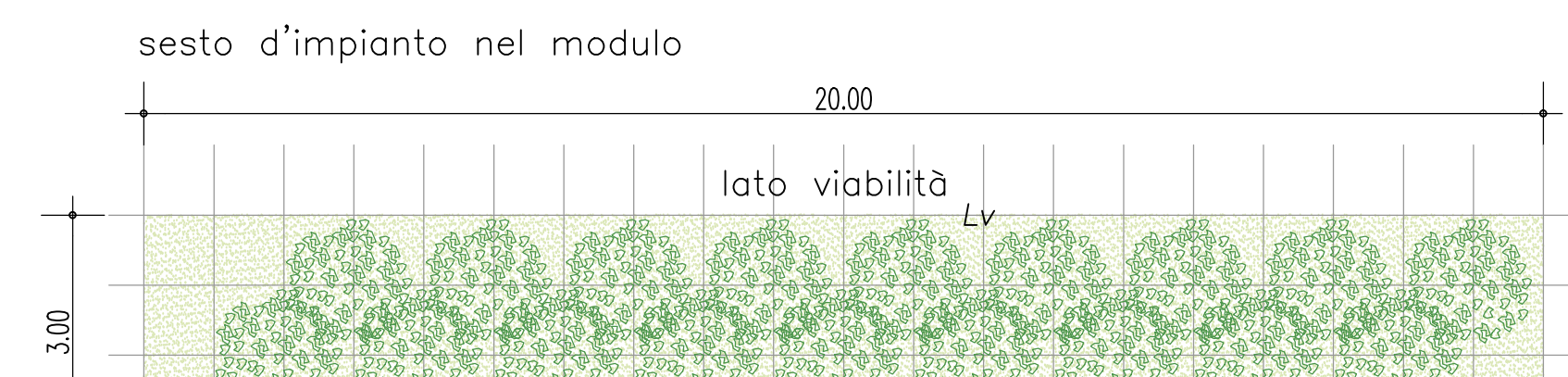
PALIFICATA VIVA (PV)
scala 1:100

Talee e piantine radicate:
Salix purpurea
Salix alba
Nerium oleander
Helichysum italicum
Tamarix gallica
Tamarix africana



SIEPE DI MASCHERAMENTO (SM)
scala 1:100

Cs *Cytisus scoparius* Lv *Ligustrum vulgare*
Mc *Myrtus communis* Rr *Retama raetam*



Stretto di Messina
Eurolink

PONTE SULLO STRETTO DI MESSINA
PROGETTO DEFINITIVO

EUROLINK S.C.p.A.
SOCIETA' ITALIANA PER CONDOTTE D'ACQUA S.p.A. (Mandatario)
COOPERATIVA MURATORI E CEMENTISTI - C.M.C. di Ravenna Soc. Coop. a.r.l. (Mandatario)
SACYR S.A.U. (Mandatario)
ISHIKAWAJIMA - HARIMA HEAVY INDUSTRIES CO. Ltd. (Mandatario)
A.C.I. S.C.P.A. - CONSORZIO STABILE (Mandatario)

IL PROGETTISTA: Dott. Ing. D. Spoglianti
IL CONTRAENTE GENERALE: Project Manager (Ing. P.P. Marcheselli)
STRETTO DI MESSINA: Direttore Generale e RUP Validazione (Ing. G. Timmenhelli)
STRETTO DI MESSINA: Amministratore Delegato (Dott. P. Gucci)

COLLEGAMENTI SICILIA
INFRASTRUTTURE STRADALI OPERE CIVILI
ELEMENTI DI CARATTERE GENERALE
OPERE COMPLEMENTARI - OPERE A VERDE
PARTICOLARI REALIZZATIVI

REV.	DATA	DESCRIZIONE	REDATTO	VERIFICATO	APPROVATO
1	20/06/2011	EMMISSIONE FINALE	P. MICHELI	M. SALOMONE	D. SPOGLIANTI