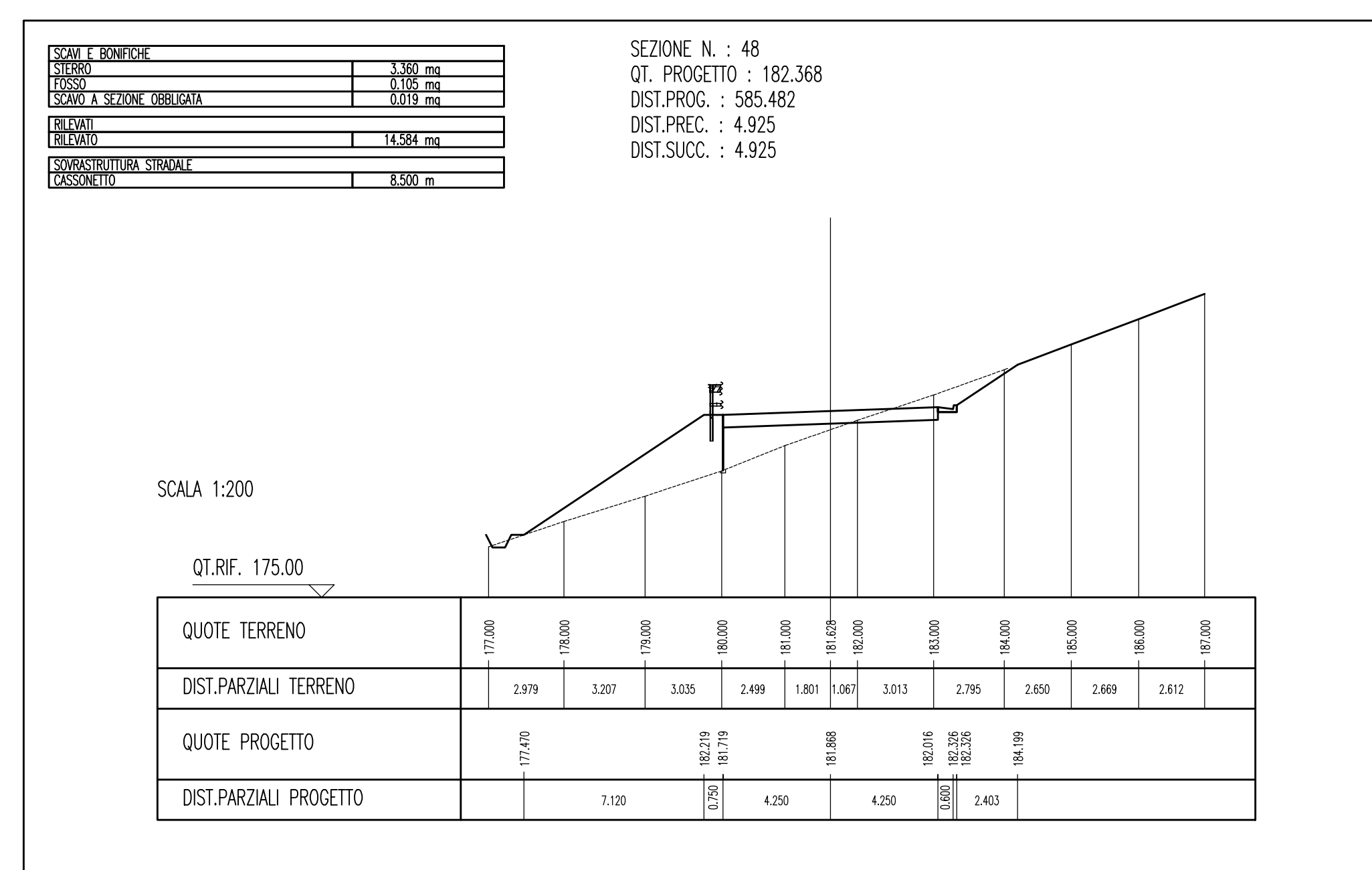
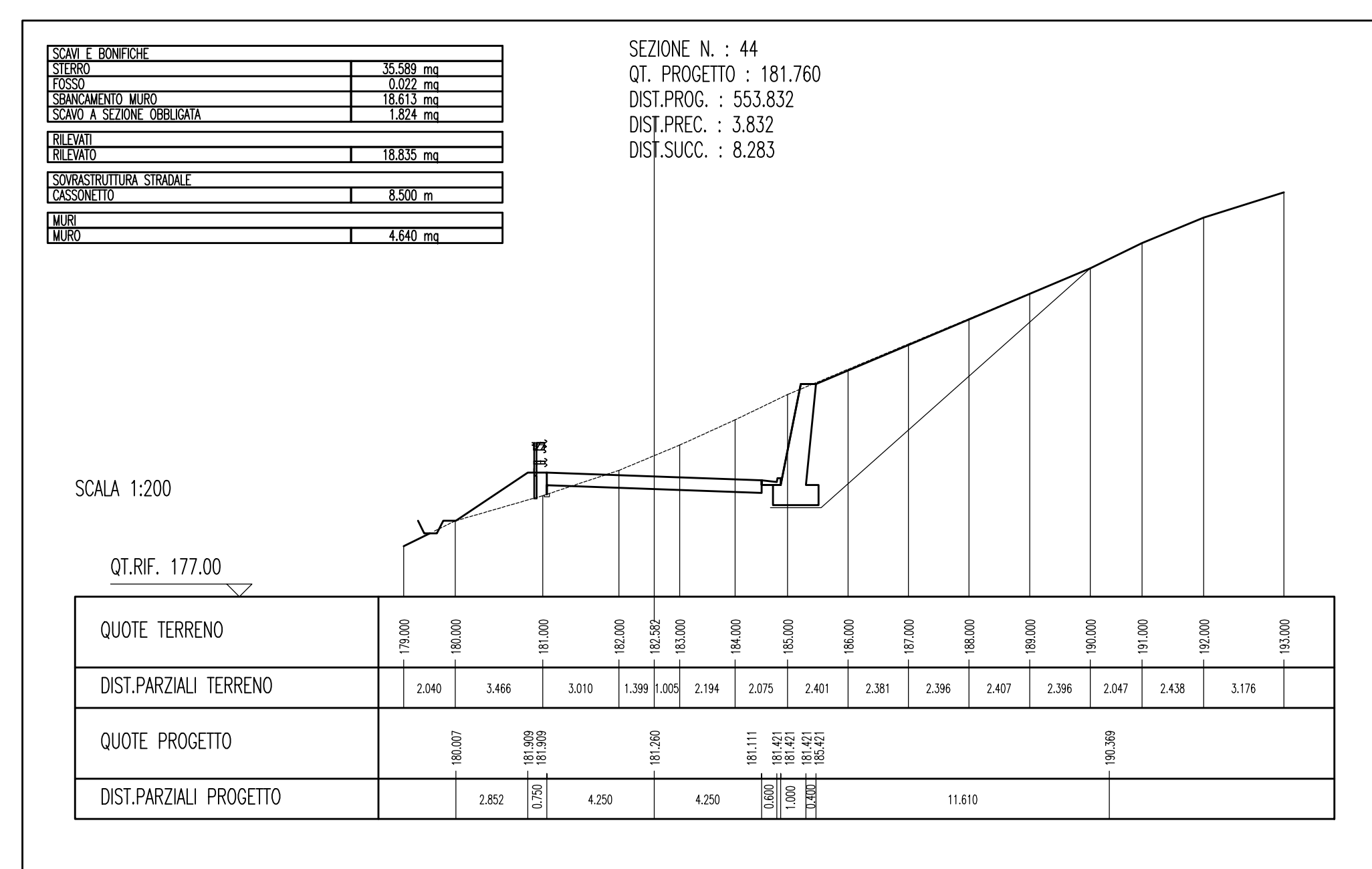
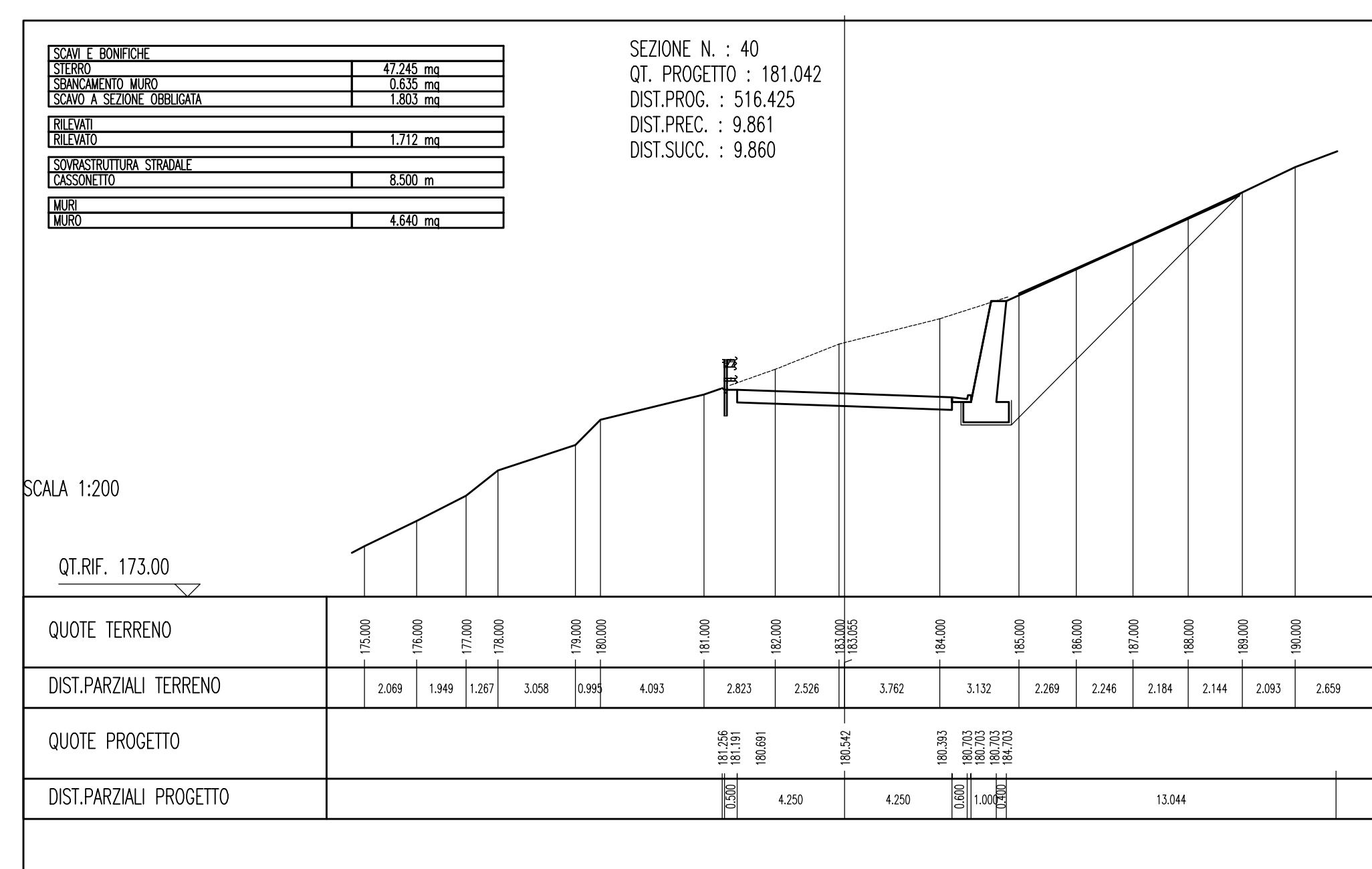
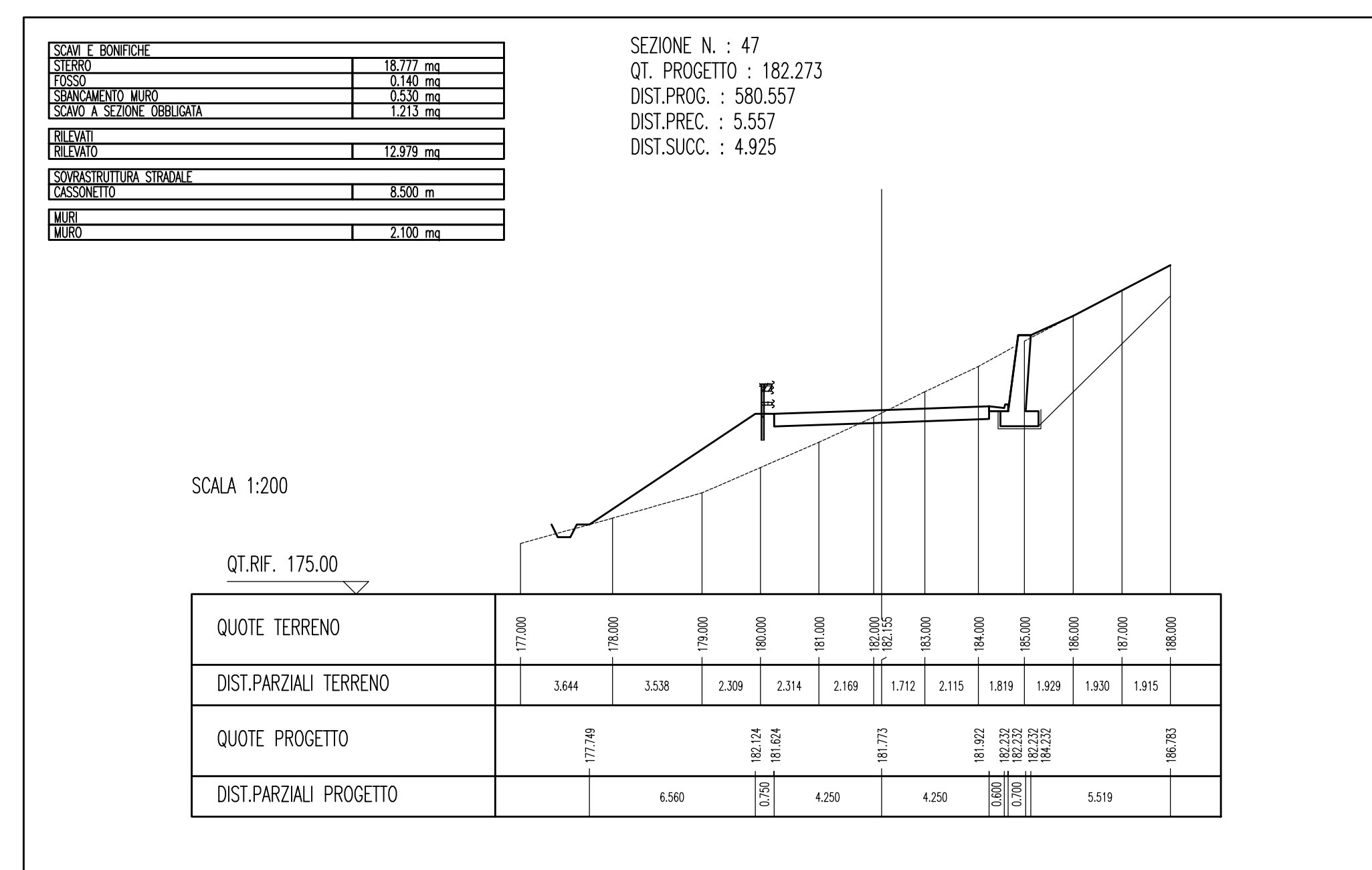
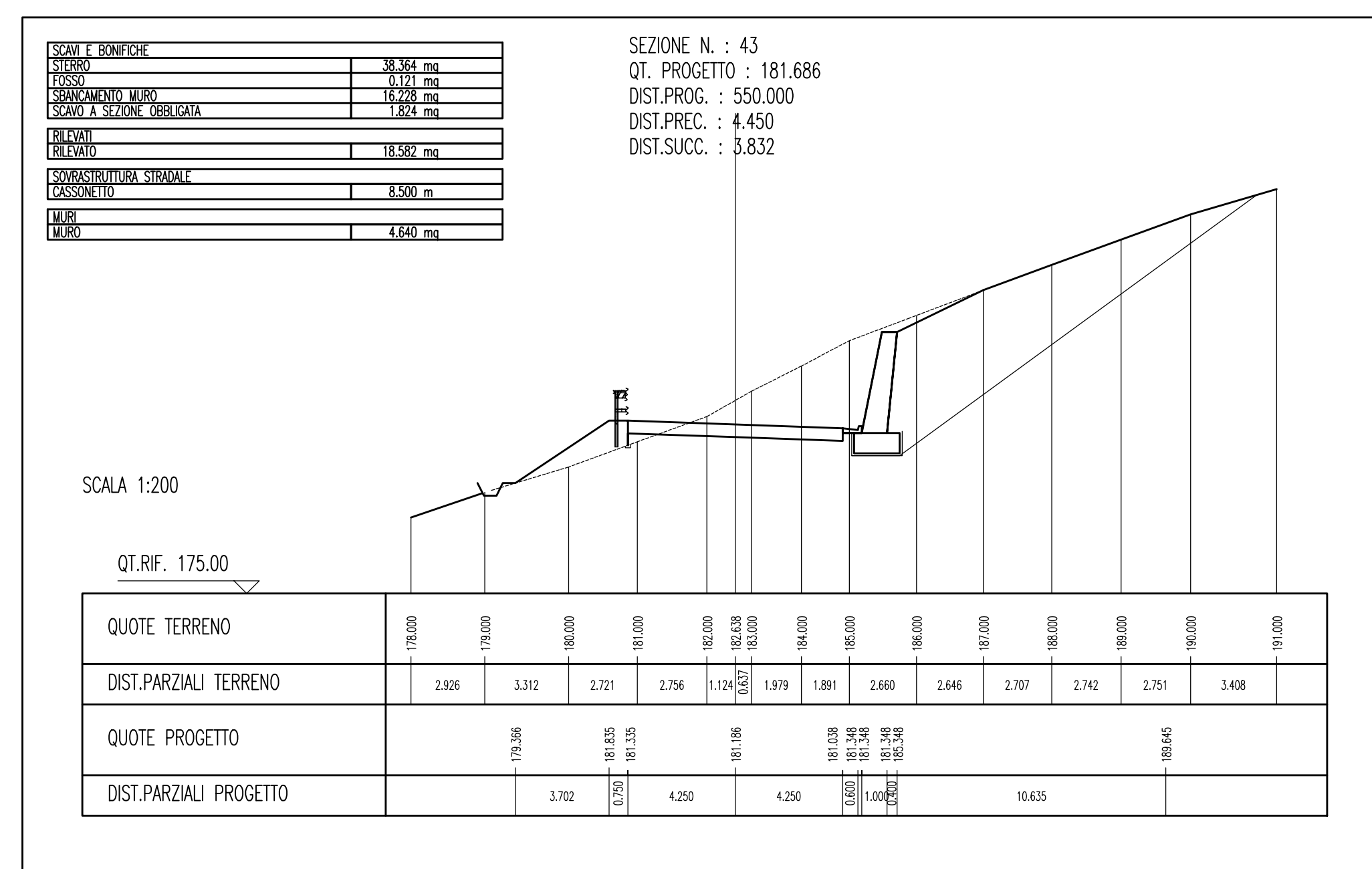
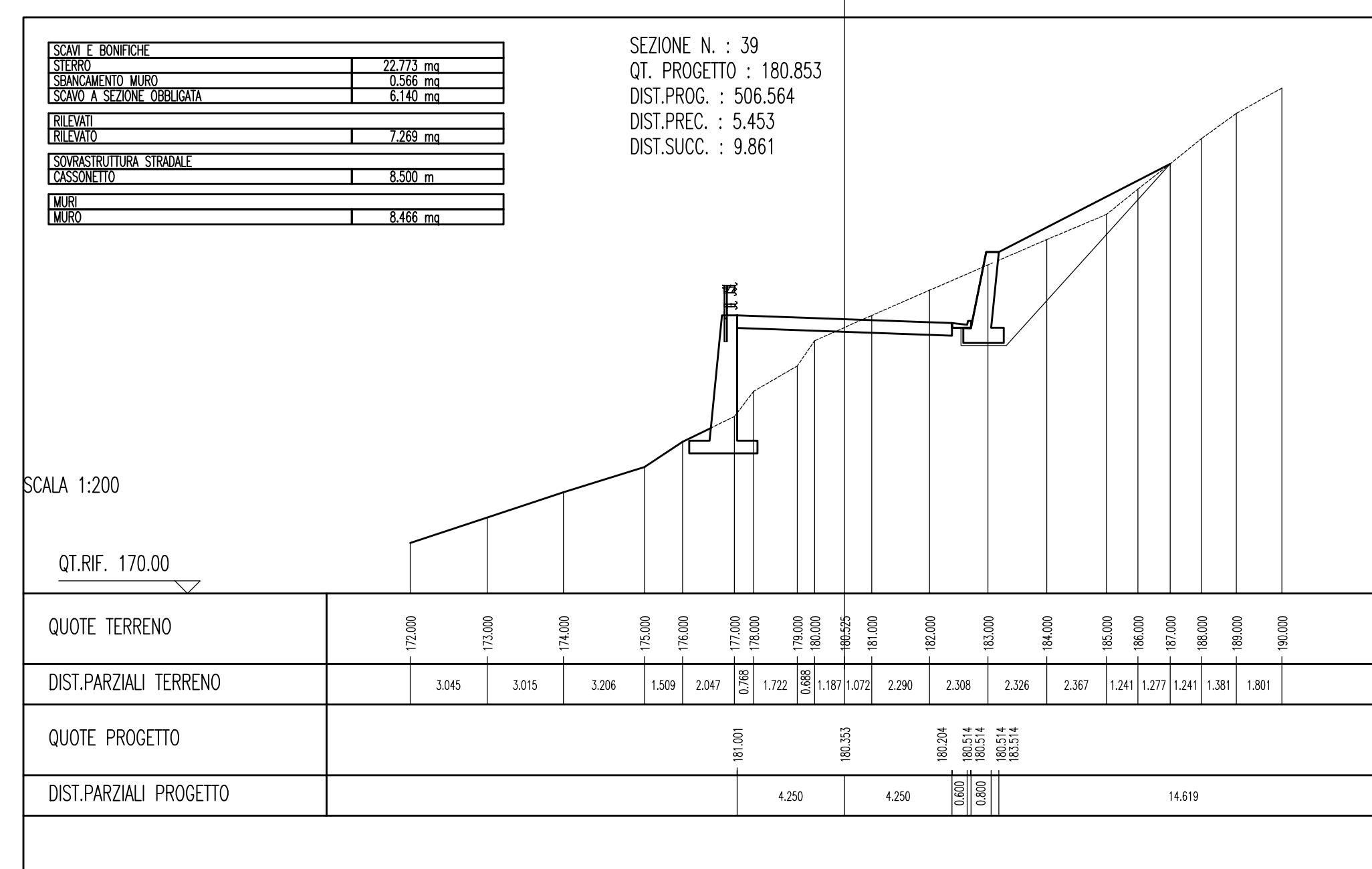
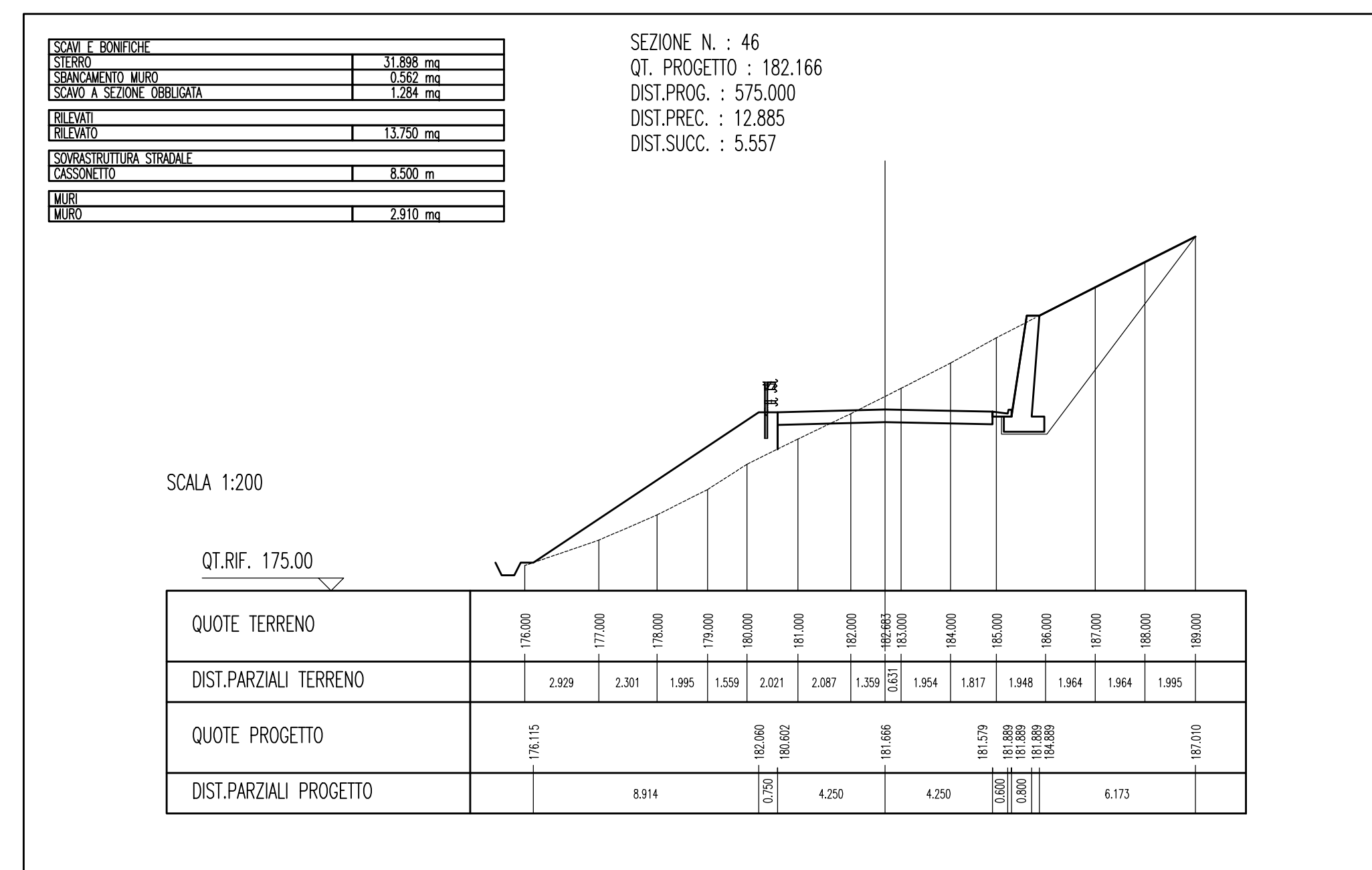
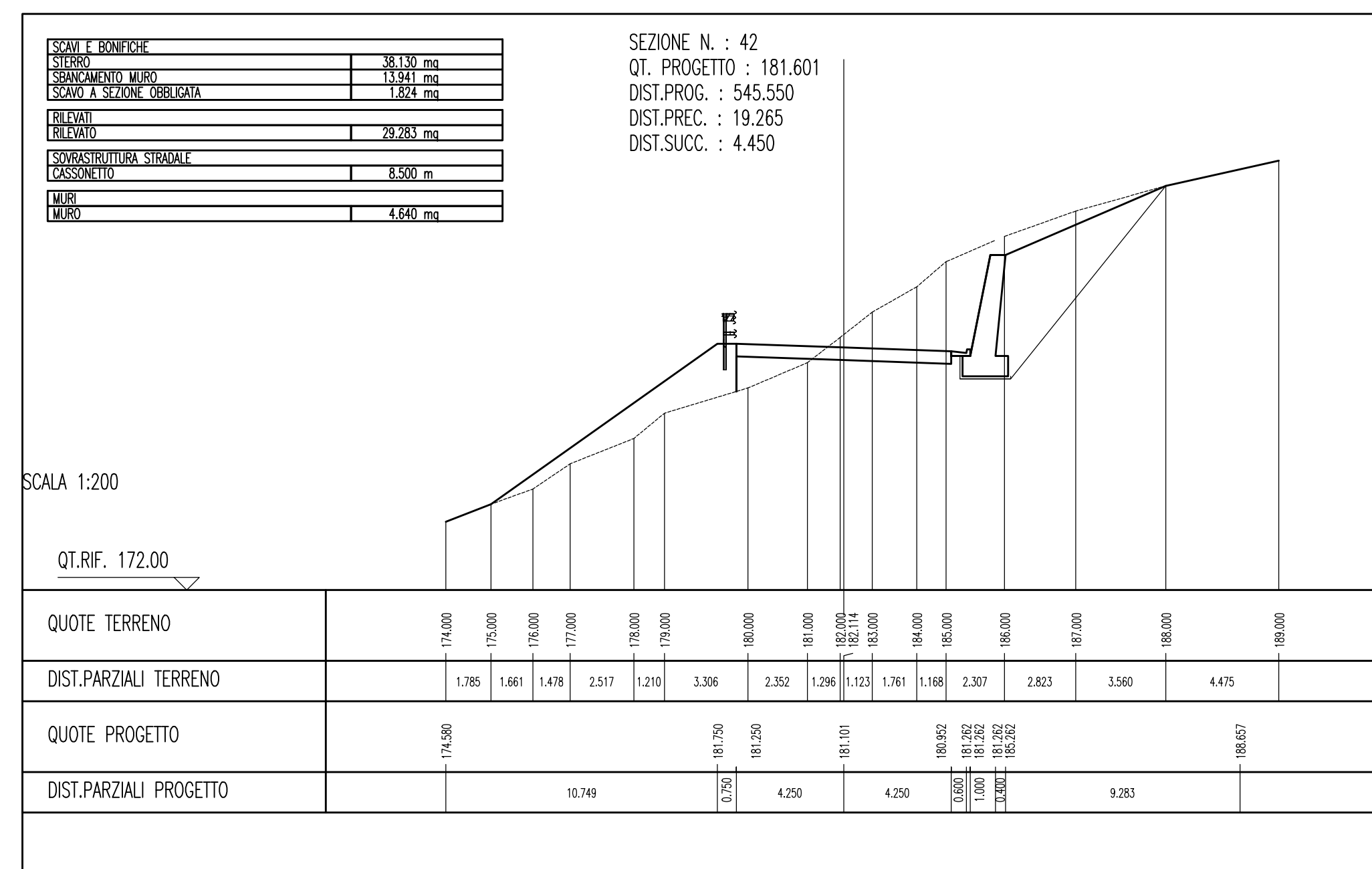
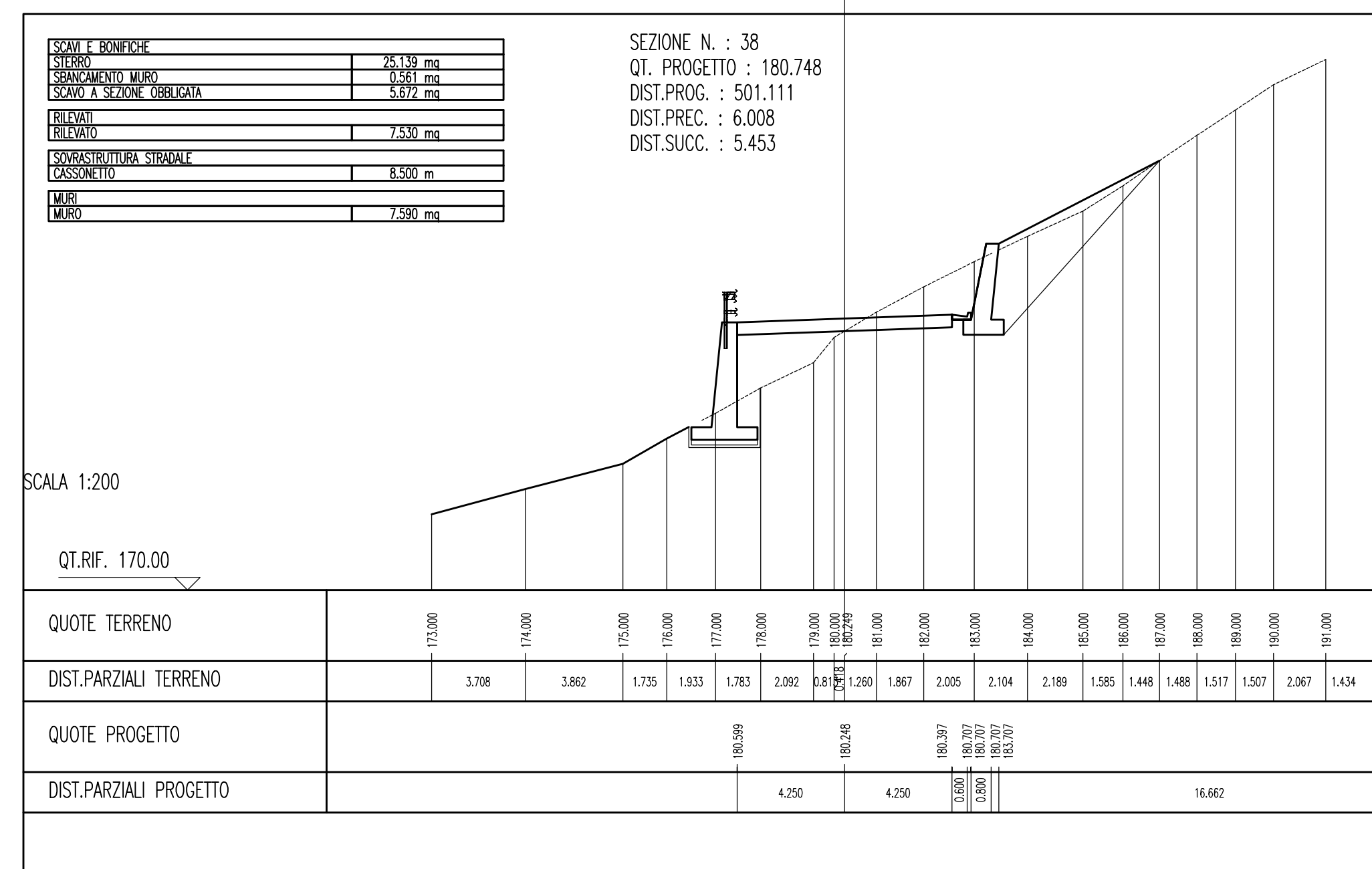
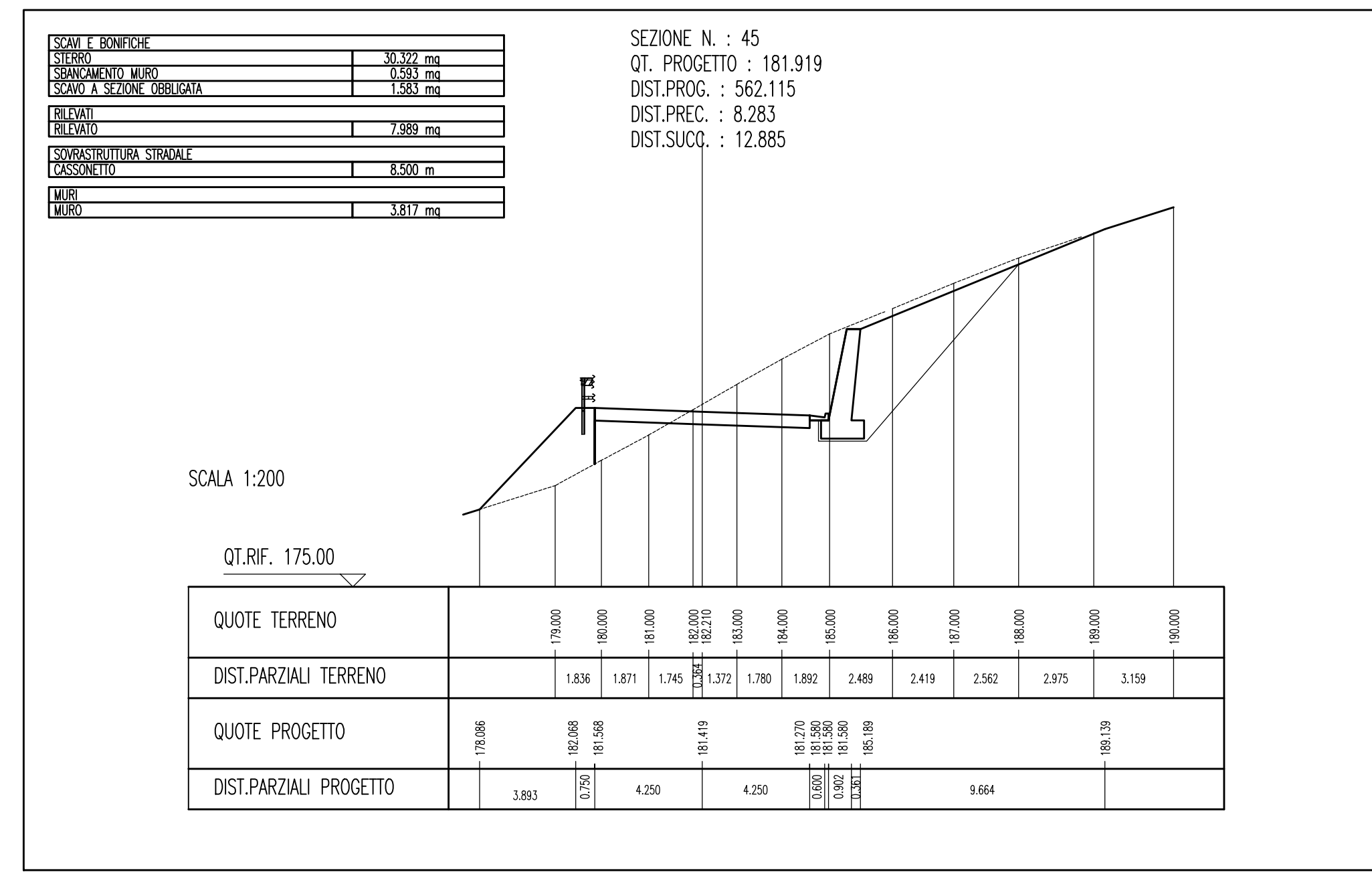
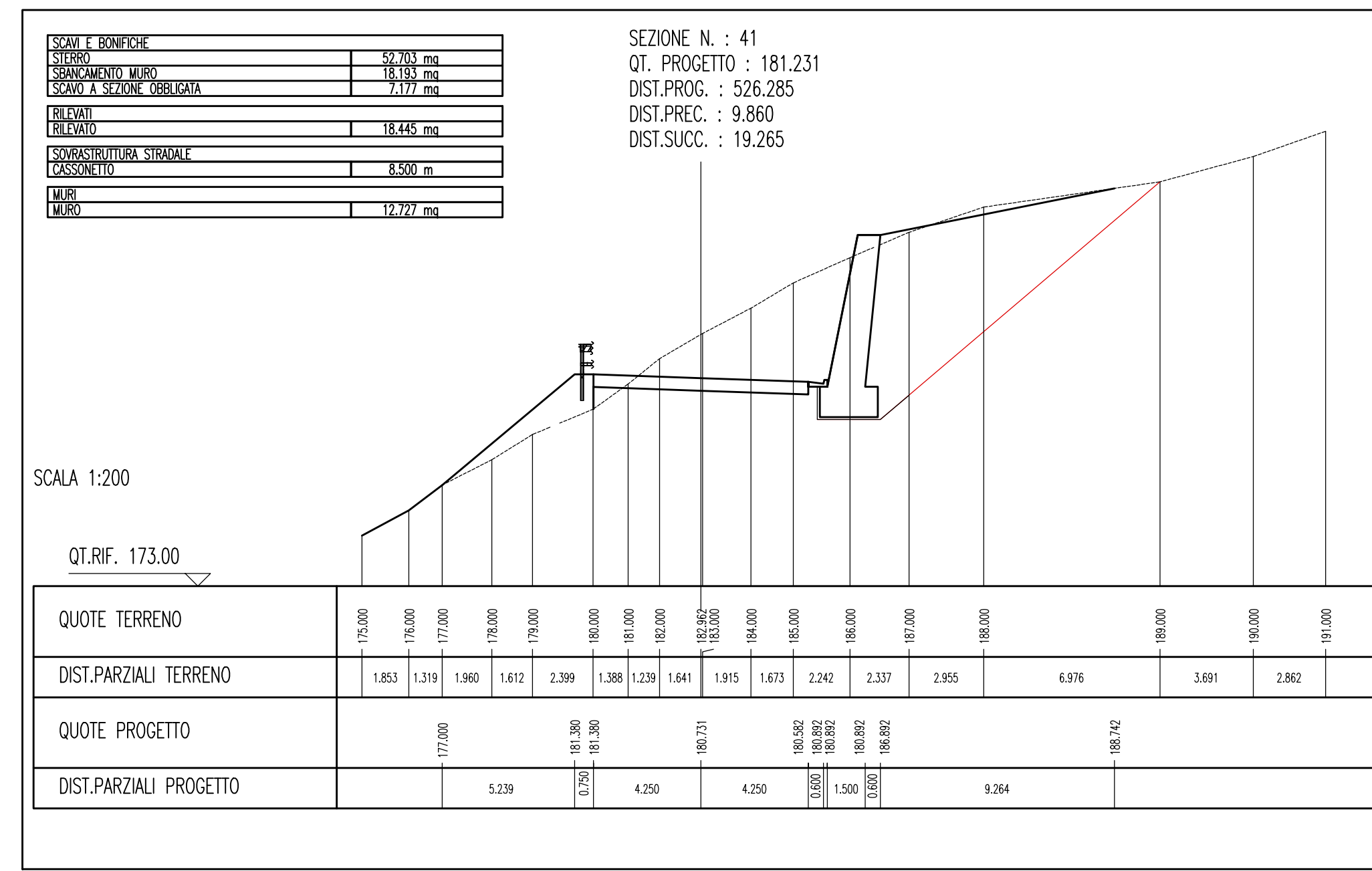
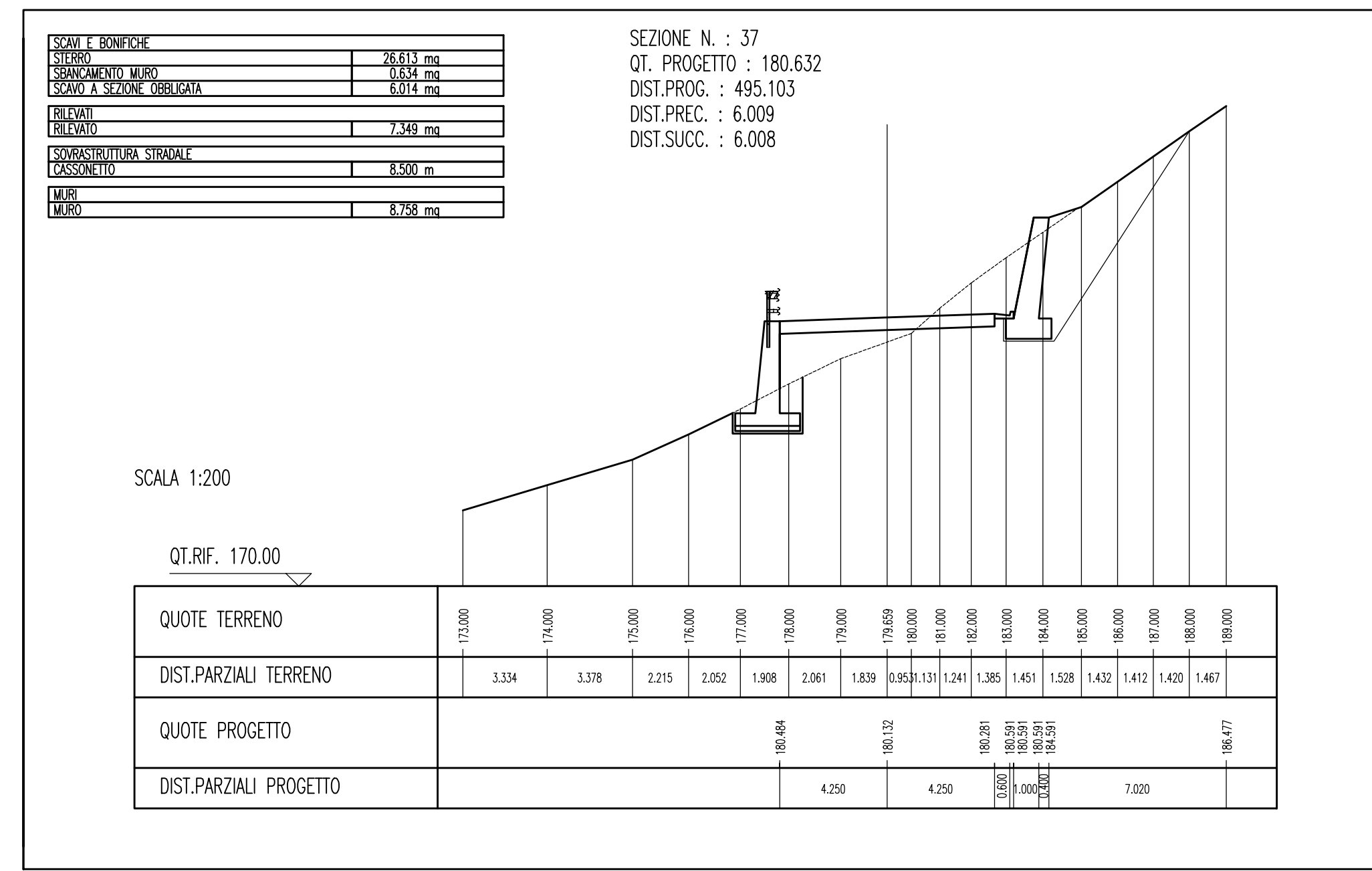
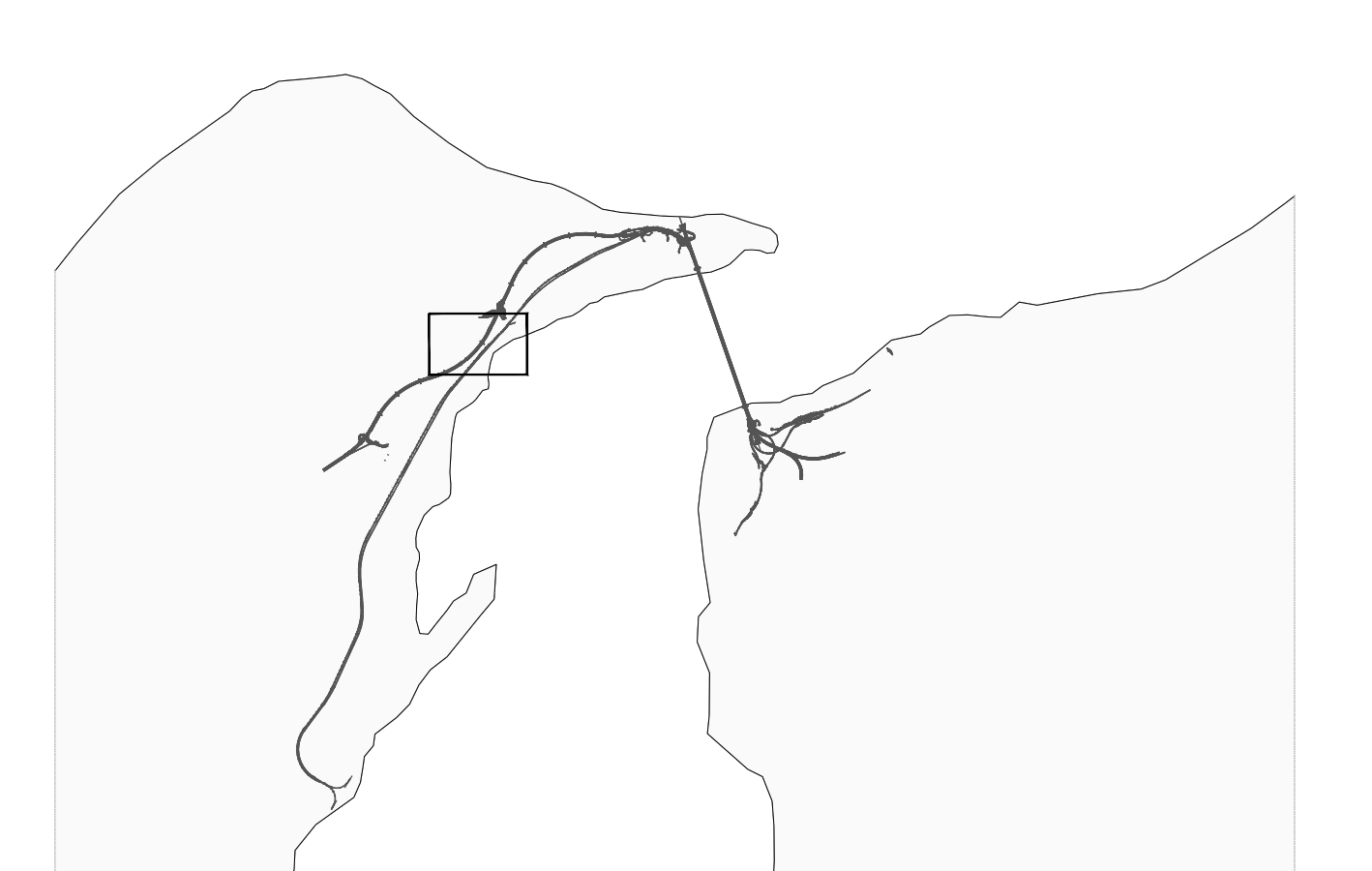


P-SN5 - SEZIONI TRASVERSALI 4/25

TRATTO 1



NOTE GENERALI



Stretto di Messina
 Concessionaria per la progettazione, realizzazione e gestione del collegamento stabile tra lo Stretto e il Corrente
 Organismo di Diritto Pubblico
 (Legge n° 1158 del 17 dicembre 1971, modificata dal D.Lgs. n° 114 del 24 aprile 2001)

EUROLINK S.p.A.
 IMPREGILO S.p.A. (Mandataria)
 SOCIETA' ITALIANA PER CONDOTTE D'ACQUA S.p.A. (Mandatario)
 COOPERATIVA MURATORI E CEMENTISTI - C.M.C. di Ravenna Soc. Coop. a.r.l. (Mandatario)
 SACVY S.A.U. (Mandatario)
 ISHKAWAJIMA - HARIMA HEAVY INDUSTRIES CO. Ltd. (Mandatario)
 A.C.I. S.C.P.A. - CONSORZIO STABILE (Mandatario)

PROGETTO DEFINITIVO

GENERALE
 INFRASTRUTTURE STRADALI OPERE CIVILI
 VIABILITA' SECONDARIA
 GENERALE - P-SN5 COLLEGAMENTO STRADA MILITARE CAMPO ITALIA
 P-SN5 - SEZIONI TRASVERSALI 4/25

SS0902_F0

REV.	DATA	DESCRIZIONE	REDATTO	VERIFICATO	APPROVATO
FO	20/06/2011	EMISSIONE FINALE	CHIOVETTA	PERILLO	RUSSO

SCALA: 1:200
 NOME DEL FILE: SS0902_F0.dwg