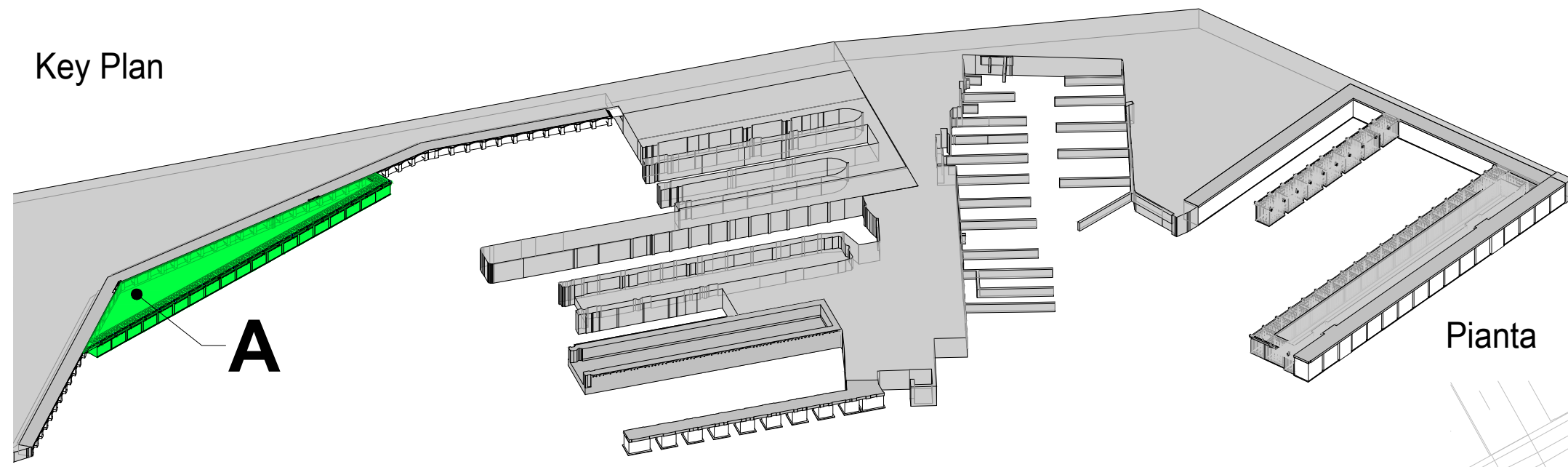
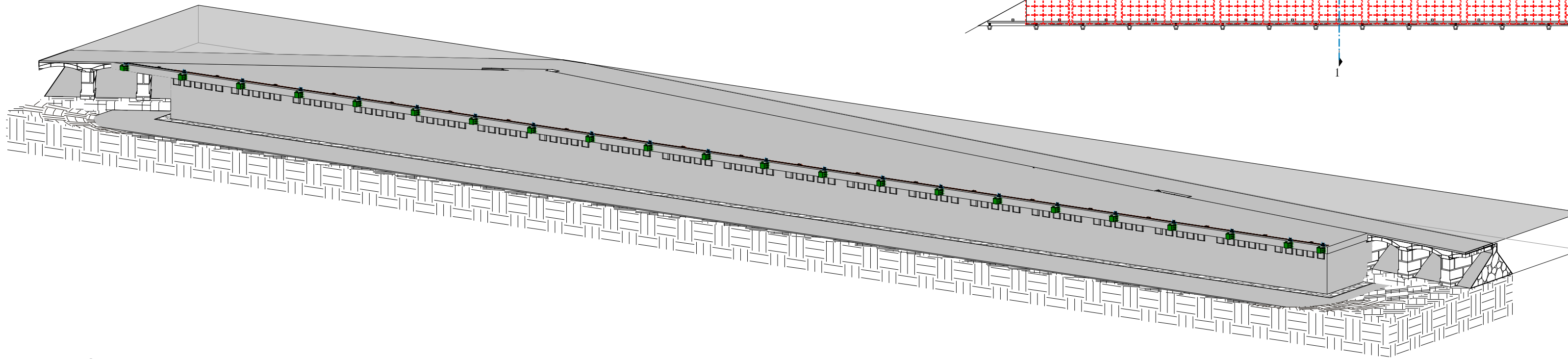


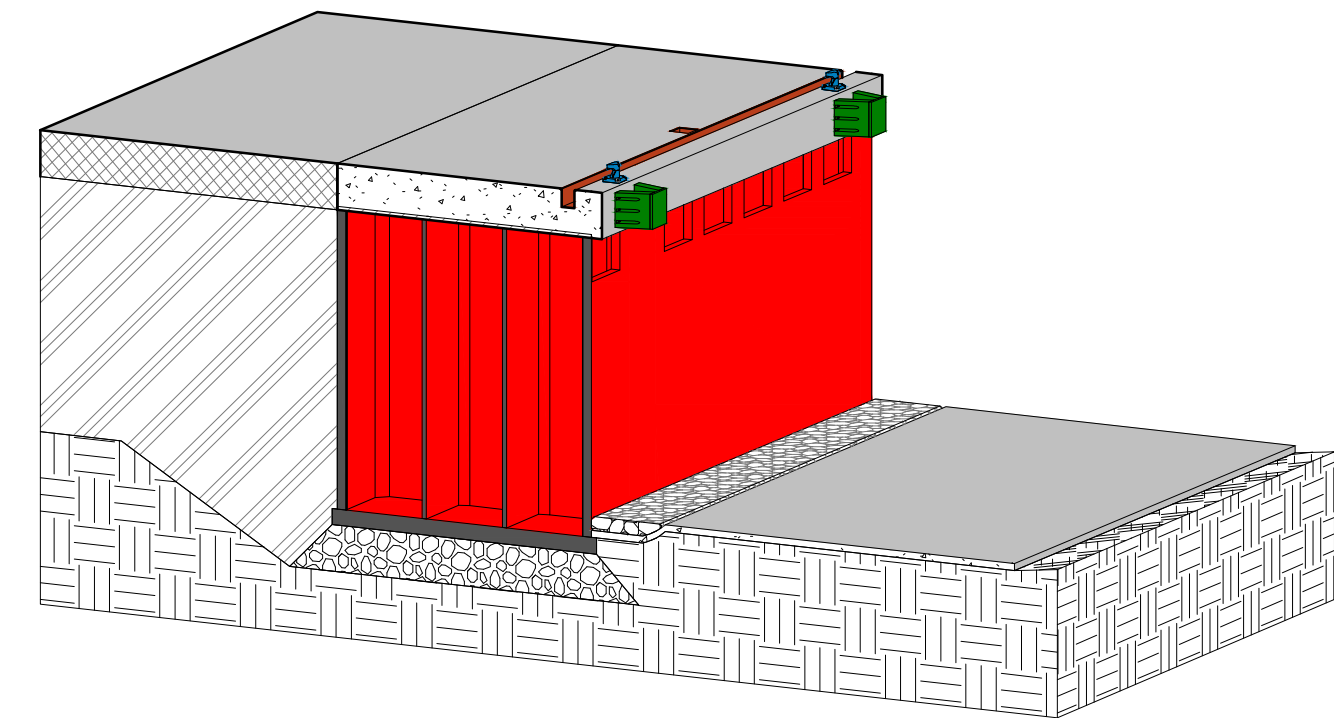
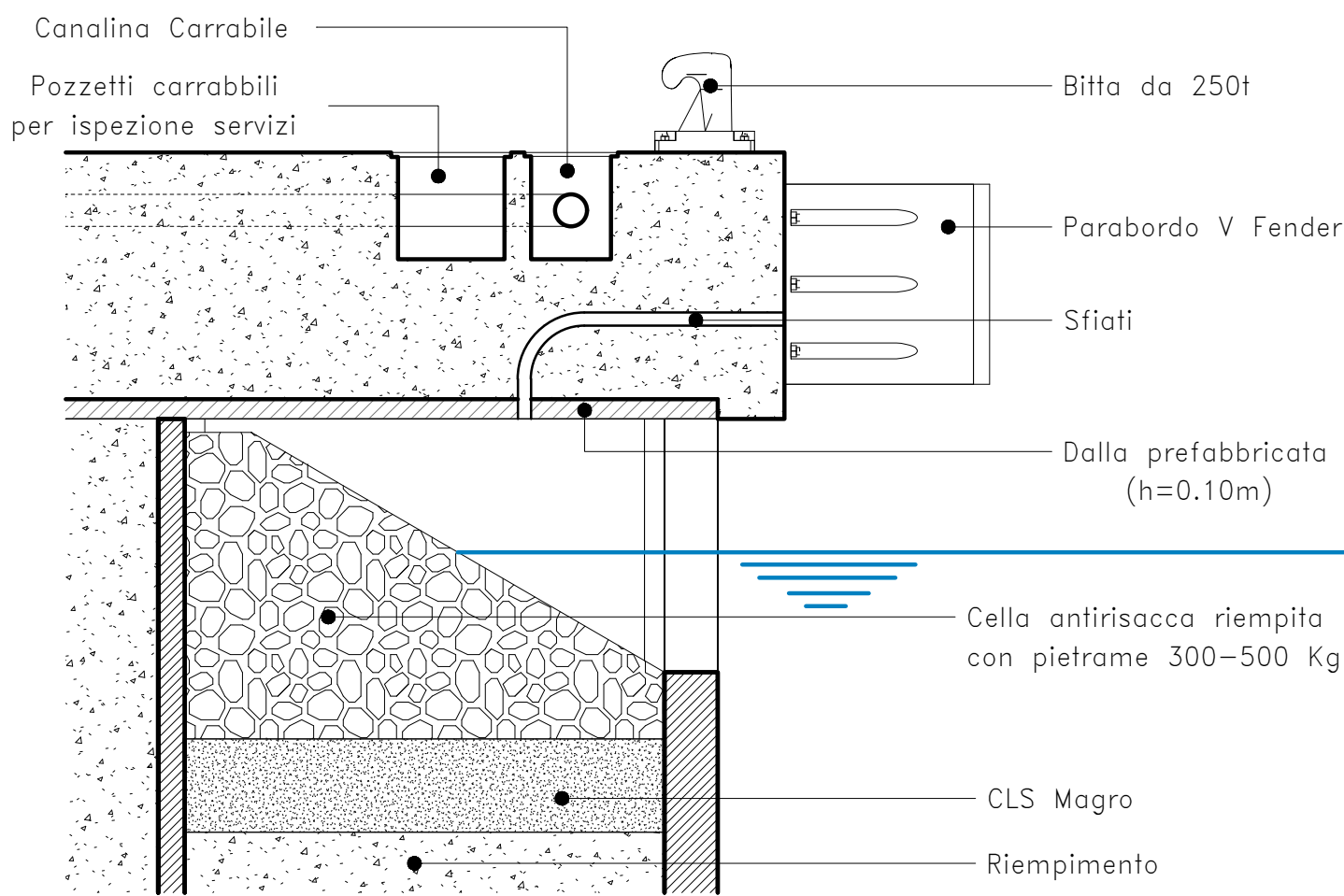
Key Plan



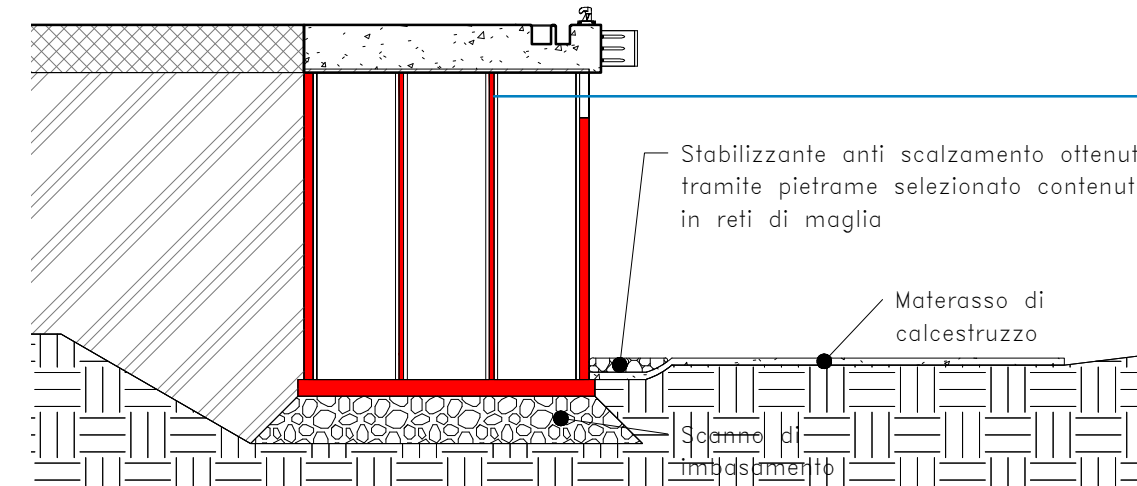
Pianta



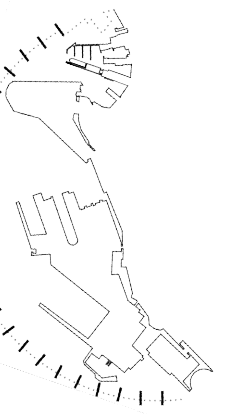
Det. Cella Antirisacca



Sezione 1-1



PROPOSTA DI RIQUALIFICAZIONE
Porto di Levante
Genova



Committenti:

ZENA CRUISE TERMINAL S.r.l.



Project manager:

Dott. Angiolino Barreca

Progetto e coordinamento tecnico:

SIBILL4ASSOCIATI s.r.l.

Attività specialistiche:

Studio Legale Carassale-Cocchi e associati

M&L | Molino&Longo www.GENOVAPORT.it

Industria Ambiente s.r.l.

Oggetto della tavola:

OPERE
INFRASTRUTTURALI

INTERVENTO AREA CALATA
GADDA

SCALA: VARIE

D|US|02

Rev.	Data Revisione
A	12.11.2019