

Allegato 5C

Schede delle Misure Fonometriche e Riprese Fotografiche dei Punti di Misura

Schede delle Misure Fonometriche

Nome misura : Taranto Globali (File N. 1) (07/19/06 15:28:01)

Data, ora misura : 19/07/2006 15.28.01

Durata Misura : 1201.2 s

Località: Taranto

Punto di Misura : B1-1

L1.0: 67.1 dB(A) fast

L10.0: 49.1 dB(A) fast

L50.0: 41.9 dB(A) fast

L90.0: 39.8 dB(A) fast

L95.0: 39.5 dB(A) fast

L99.0: N/A dB(A) fast

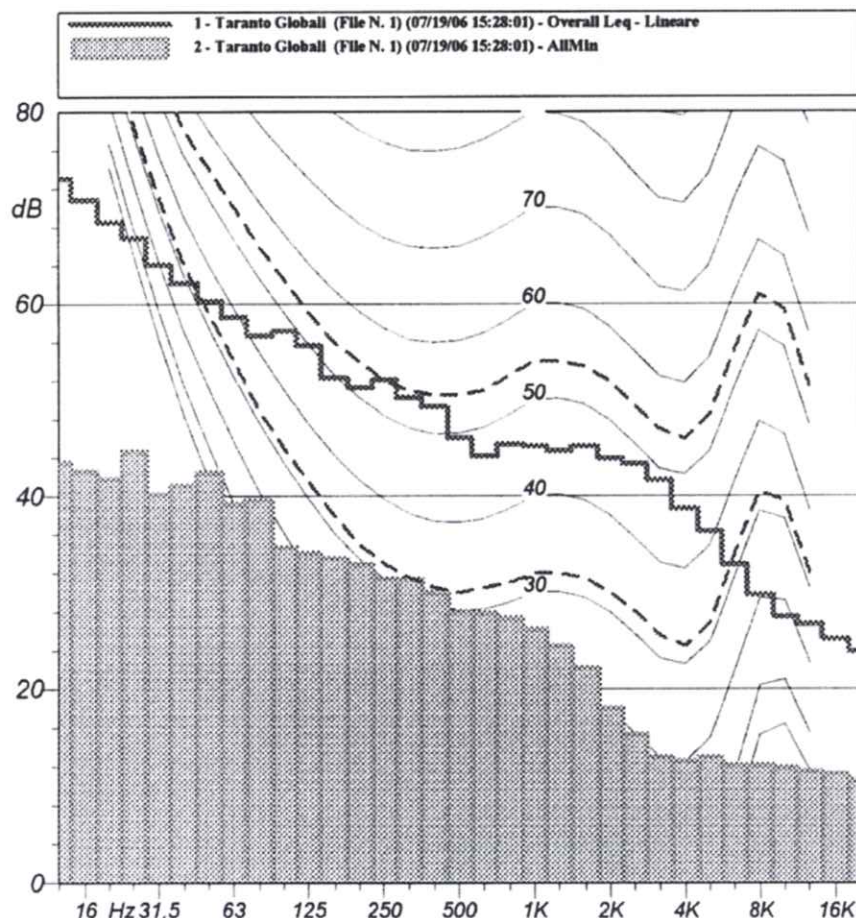
Leq (A) : 55.9 dBA

Leq (A): 55.9 dBA SEL (A): 86.7 dBA Peak (A): 91.7 dBA (19Jul2006 15:34:54)	Leq (C): 71.9 dBC SEL (C): 102.7 dBC Peak (C): 99.5 dBC (19Jul2006 15:34:54)	Leq (Lin): 77.5 dB SEL (Lin): 108.3 dB Peak (Lin): 100.3 dB (19Jul2006 15:35:51)
---	--	--

	Lmin (A)	Lmax (A)	Lmin (C)	Lmax (C)	Lmin (Lin)	Lmax (Lin)
S	38.6 19Jul2006 15:40:53	78.9 19Jul2006 15:34:54	56.3 19Jul2006 15:42:00	87.7 19Jul2006 15:34:54	59.2 19Jul2006 15:42:00	88.8 19Jul2006 15:34:53
F	38.3 19Jul2006 15:40:53	79.8 19Jul2006 15:34:53	53.8 19Jul2006 15:42:06	88.6 19Jul2006 15:34:53	56.2 19Jul2006 15:42:07	92.6 19Jul2006 15:48:34
I	38.7 19Jul2006 15:40:53	80.1 19Jul2006 15:34:53	57.4 19Jul2006 15:41:34	90.9 19Jul2006 15:48:34	61.0 19Jul2006 15:42:07	95.6 19Jul2006 15:48:34

Hz	dB
12.5 Hz	73.0 dB
16 Hz	70.8 dB
20 Hz	68.5 dB
25 Hz	66.9 dB
31.5 Hz	64.1 dB
40 Hz	62.2 dB
50 Hz	60.3 dB
63 Hz	58.6 dB
80 Hz	56.7 dB
100 Hz	57.2 dB
125 Hz	55.7 dB
160 Hz	52.3 dB
200 Hz	51.3 dB
250 Hz	52.1 dB
315 Hz	50.3 dB
400 Hz	49.3 dB
500 Hz	46.1 dB
630 Hz	44.2 dB
800 Hz	45.4 dB
1000 Hz	45.2 dB
1250 Hz	44.7 dB
1600 Hz	45.2 dB
2000 Hz	43.9 dB
2500 Hz	43.4 dB
3150 Hz	41.7 dB
4000 Hz	38.7 dB
5000 Hz	36.3 dB
6300 Hz	32.9 dB
8000 Hz	29.8 dB
10000 Hz	27.5 dB
12500 Hz	26.7 dB
16000 Hz	25.2 dB
20000 Hz	23.9 dB

Hz	dB
12.5 Hz	43.5 dB
16 Hz	42.6 dB
20 Hz	41.8 dB
25 Hz	44.7 dB
31.5 Hz	40.2 dB
40 Hz	41.1 dB
50 Hz	42.5 dB
63 Hz	39.2 dB
80 Hz	39.6 dB
100 Hz	34.7 dB
125 Hz	34.1 dB
160 Hz	33.5 dB
200 Hz	32.9 dB
250 Hz	31.5 dB
315 Hz	31.4 dB
400 Hz	30.0 dB
500 Hz	28.0 dB
630 Hz	27.9 dB
800 Hz	27.3 dB
1000 Hz	26.2 dB
1250 Hz	24.5 dB
1600 Hz	22.2 dB
2000 Hz	18.0 dB
2500 Hz	15.3 dB
3150 Hz	12.9 dB
4000 Hz	12.6 dB
5000 Hz	12.9 dB
6300 Hz	12.1 dB
8000 Hz	12.1 dB
10000 Hz	11.9 dB
12500 Hz	11.5 dB
16000 Hz	11.2 dB
20000 Hz	10.6 dB



Nome misura : Taranto Globali (File N. 4) (07/19/06 17:26:03)

Data, ora misura : 19/07/2006 17.26.03

Durata Misura : 1205.3 s

Località: Taranto

Punto di Misura : B1-2

L1.0: 50.7 dB(A) fast
 L10.0: 44.5 dB(A) fast
 L50.0: 42.6 dB(A) fast
 L90.0: 41.1 dB(A) fast
 L95.0: 40.8 dB(A) fast
 L99.0: N/A dB(A) fast

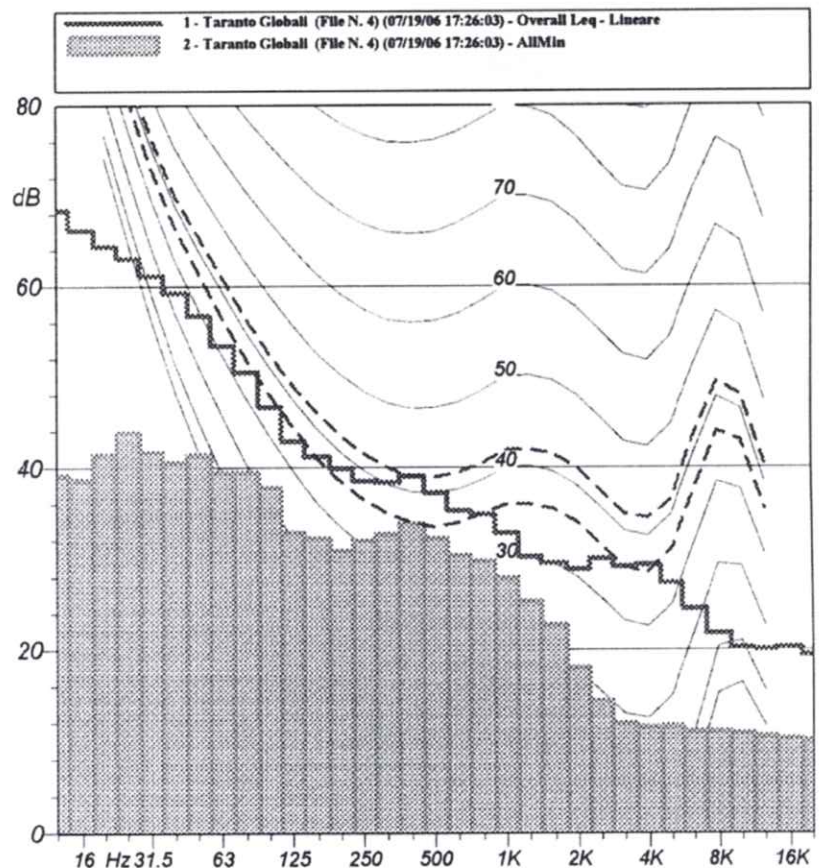
Leq (A) : 44.3 dBA

Leq (A): 44.3 dBA SEL (A): 75.1 dBA Peak (A): 77.7 dBA (19Jul2006 17:33:09)	Leq (C): 67.5 dBC SEL (C): 98.3 dBC Peak (C): 91.0 dBC (19Jul2006 17:28:46)	Leq (Lin): 73.4 dB SEL (Lin): 104.2 dB Peak (Lin): 99.4 dB (19Jul2006 17:28:46)
--	--	--

	Lmin (A)	Lmax (A)	Lmin (C)	Lmax (C)	Lmin (Lin)	Lmax (Lin)
S	40.3 19Jul2006 17:36:19	61.4 19Jul2006 17:33:11	56.1 19Jul2006 17:44:28	80.2 19Jul2006 17:28:46	59.0 19Jul2006 17:44:07	86.9 19Jul2006 17:28:46
F	39.6 19Jul2006 17:36:19	64.5 19Jul2006 17:33:09	53.6 19Jul2006 17:44:28	85.0 19Jul2006 17:28:46	56.7 19Jul2006 17:42:00	91.6 19Jul2006 17:28:46
I	39.9 19Jul2006 17:36:19	66.5 19Jul2006 17:33:09	56.9 19Jul2006 17:44:28	87.5 19Jul2006 17:28:46	59.8 19Jul2006 17:42:00	94.9 19Jul2006 17:28:46

Hz	dB
12.5 Hz	68.4 dB
16 Hz	66.2 dB
20 Hz	64.4 dB
25 Hz	63.1 dB
31.5 Hz	61.2 dB
40 Hz	59.3 dB
50 Hz	56.8 dB
63 Hz	53.4 dB
80 Hz	50.5 dB
100 Hz	46.6 dB
125 Hz	42.9 dB
160 Hz	41.2 dB
200 Hz	39.9 dB
250 Hz	38.6 dB
315 Hz	38.4 dB
400 Hz	39.1 dB
500 Hz	37.3 dB
630 Hz	35.3 dB
800 Hz	34.9 dB
1000 Hz	32.8 dB
1250 Hz	30.2 dB
1600 Hz	29.5 dB
2000 Hz	28.8 dB
2500 Hz	30.0 dB
3150 Hz	29.1 dB
4000 Hz	29.3 dB
5000 Hz	27.3 dB
6300 Hz	24.5 dB
8000 Hz	21.8 dB
10000 Hz	20.2 dB
12500 Hz	20.0 dB
16000 Hz	20.2 dB
20000 Hz	19.4 dB

Hz	dB
12.5 Hz	39.2 dB
16 Hz	38.7 dB
20 Hz	41.5 dB
25 Hz	43.9 dB
31.5 Hz	41.7 dB
40 Hz	40.6 dB
50 Hz	41.4 dB
63 Hz	39.5 dB
80 Hz	39.5 dB
100 Hz	37.8 dB
125 Hz	32.9 dB
160 Hz	32.3 dB
200 Hz	30.9 dB
250 Hz	32.0 dB
315 Hz	32.7 dB
400 Hz	33.9 dB
500 Hz	32.3 dB
630 Hz	30.4 dB
800 Hz	29.7 dB
1000 Hz	27.9 dB
1250 Hz	25.3 dB
1600 Hz	22.7 dB
2000 Hz	18.0 dB
2500 Hz	14.4 dB
3150 Hz	11.9 dB
4000 Hz	11.5 dB
5000 Hz	11.6 dB
6300 Hz	11.0 dB
8000 Hz	11.0 dB
10000 Hz	10.8 dB
12500 Hz	10.5 dB
16000 Hz	10.2 dB
20000 Hz	10.0 dB



Nome misura : Taranto Globali (File N. 14) (07/20/06 10:26:22)

Data, ora misura : 20/07/2006 10.26.22

Durata Misura : 1200.8 s

Località: Taranto

Punto di Misura : B1-3

L1.0: 58.8 dB(A) fast
 L10.0: 49.1 dB(A) fast
 L50.0: 46.4 dB(A) fast
 L90.0: 45.0 dB(A) fast
 L95.0: 44.7 dB(A) fast
 L99.0: N/A dB(A) fast

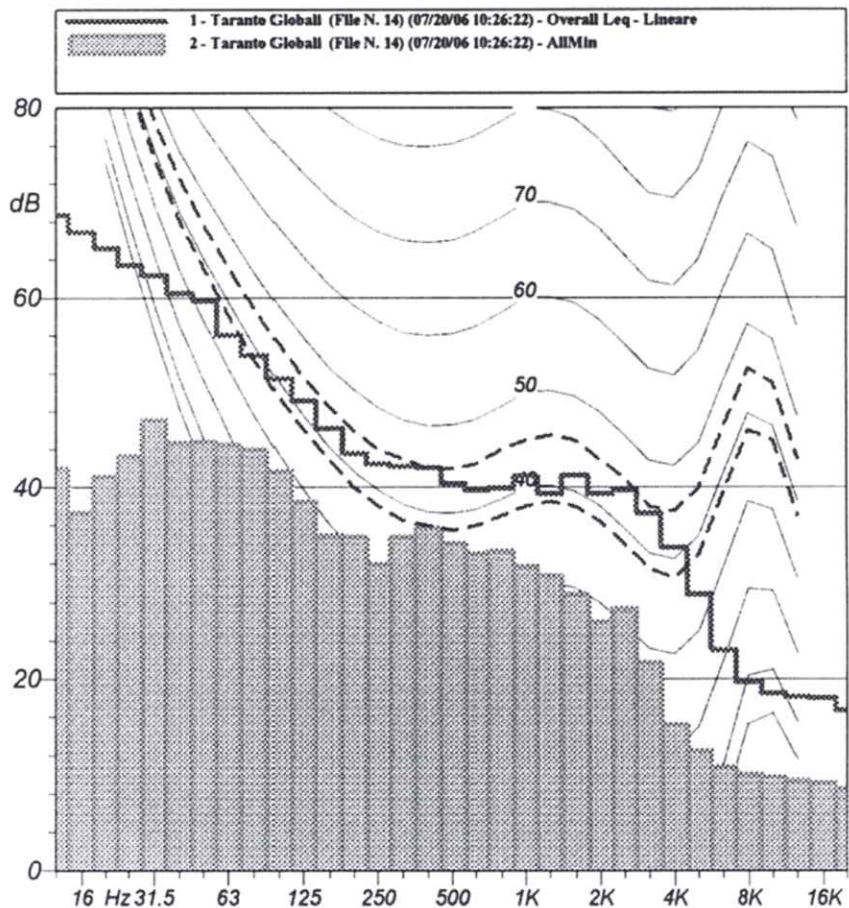
Leq (A) : 50.7 dBA

Leq (A): 50.7 dBA SEL (A): 81.5 dBA Peak (A): 85.5 dBA (20Jul2006 10:27:26)	Leq (C): 68.6 dBC SEL (C): 99.4 dBC Peak (C): 91.4 dBC (20Jul2006 10:27:26)	Leq (Lin): 74.0 dB SEL (Lin): 104.8 dB Peak (Lin): 96.0 dB (20Jul2006 10:44:28)
---	---	---

	Lmin (A)	Lmax (A)	Lmin (C)	Lmax (C)	Lmin (Lin)	Lmax (Lin)
S	44.1 20Jul2006 10:32:23	71.7 20Jul2006 10:27:26	58.9 20Jul2006 10:33:58	80.2 20Jul2006 10:27:26	61.1 20Jul2006 10:33:57	85.5 20Jul2006 10:44:28
F	43.5 20Jul2006 10:32:19	73.7 20Jul2006 10:27:26	57.2 20Jul2006 10:34:07	83.4 20Jul2006 10:44:13	58.9 20Jul2006 10:34:07	88.7 20Jul2006 10:44:28
I	43.9 20Jul2006 10:32:22	74.1 20Jul2006 10:27:26	59.7 20Jul2006 10:46:13	85.9 20Jul2006 10:44:13	62.6 20Jul2006 10:34:07	90.8 20Jul2006 10:40:48

Hz	dB
12.5 Hz	68.7 dB
16 Hz	66.9 dB
20 Hz	65.2 dB
25 Hz	63.4 dB
31.5 Hz	62.3 dB
40 Hz	60.5 dB
50 Hz	59.7 dB
63 Hz	56.0 dB
80 Hz	53.9 dB
100 Hz	51.4 dB
125 Hz	49.1 dB
160 Hz	46.2 dB
200 Hz	43.6 dB
250 Hz	42.5 dB
315 Hz	42.2 dB
400 Hz	42.1 dB
500 Hz	40.4 dB
630 Hz	39.7 dB
800 Hz	39.9 dB
1000 Hz	41.2 dB
1250 Hz	39.3 dB
1600 Hz	41.3 dB
2000 Hz	39.3 dB
2500 Hz	39.7 dB
3150 Hz	37.3 dB
4000 Hz	33.7 dB
5000 Hz	28.8 dB
6300 Hz	23.0 dB
8000 Hz	19.7 dB
10000 Hz	18.5 dB
12500 Hz	18.1 dB
16000 Hz	18.0 dB
20000 Hz	16.7 dB

Hz	dB
12.5 Hz	42.0 dB
16 Hz	37.3 dB
20 Hz	41.1 dB
25 Hz	43.3 dB
31.5 Hz	47.0 dB
40 Hz	44.7 dB
50 Hz	44.8 dB
63 Hz	44.5 dB
80 Hz	44.0 dB
100 Hz	41.7 dB
125 Hz	38.5 dB
160 Hz	34.9 dB
200 Hz	34.8 dB
250 Hz	31.9 dB
315 Hz	34.8 dB
400 Hz	35.8 dB
500 Hz	34.2 dB
630 Hz	33.0 dB
800 Hz	33.3 dB
1000 Hz	31.7 dB
1250 Hz	30.7 dB
1600 Hz	28.8 dB
2000 Hz	25.9 dB
2500 Hz	27.3 dB
3150 Hz	21.7 dB
4000 Hz	15.2 dB
5000 Hz	12.5 dB
6300 Hz	10.8 dB
8000 Hz	10.1 dB
10000 Hz	9.8 dB
12500 Hz	9.4 dB
16000 Hz	9.1 dB
20000 Hz	8.5 dB



Nome misura : Taranto Globali (File N. 8) (07/19/06 23:54:40)

Data, ora misura : 19/07/2006 23.54.40

Durata Misura : 911.1 s

Località: Taranto

Punto di Misura : B1-N1

L1.0: 52.8 dB(A) fast

L10.0: 51.6 dB(A) fast

L50.0: 50.3 dB(A) fast

L90.0: 49.1 dB(A) fast

L95.0: 48.9 dB(A) fast

L99.0: N/A dB(A) fast

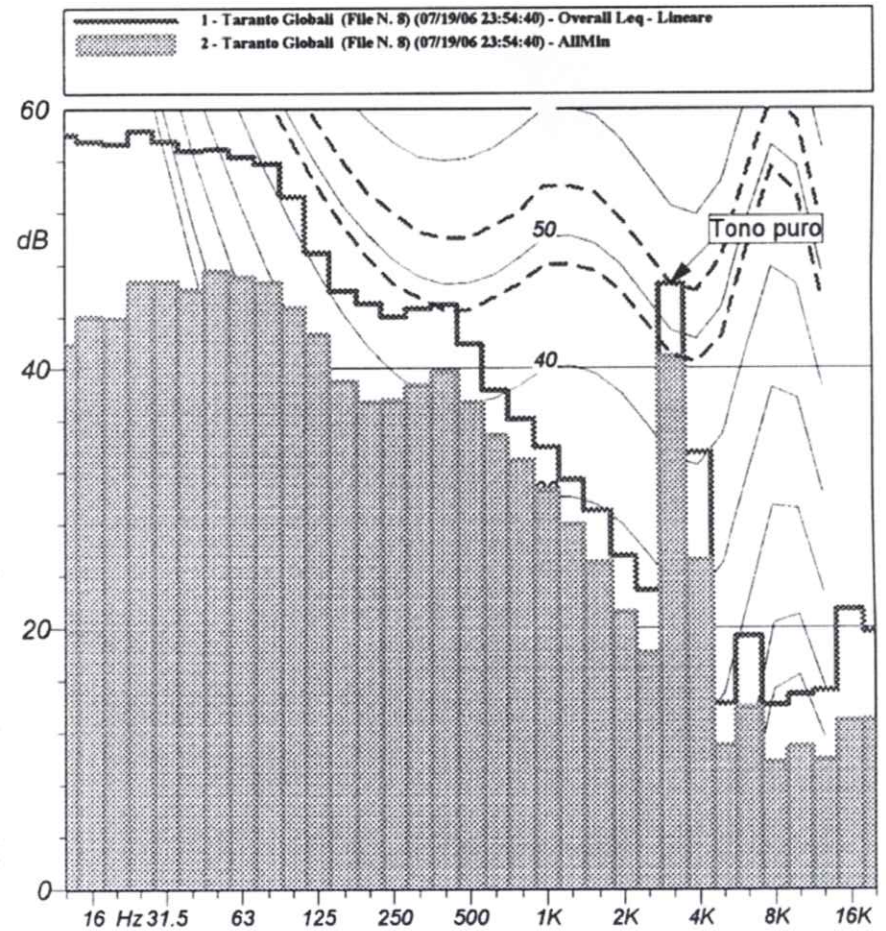
Leq (A) : 50.5 dBA

Leq (A): 50.5 dBA SEL (A): 80.1 dBA Peak (A): 80.8 dBA (20Jul2006 00:08:44)	Leq (C): 64.3 dBC SEL (C): 93.9 dBC Peak (C): 84.5 dBC (19Jul2006 23:57:01)	Leq (Lin): 66.5 dB SEL (Lin): 96.1 dB Peak (Lin): 87.9 dB (19Jul2006 23:55:38)
---	---	--

	Lmin (A)	Lmax (A)	Lmin (C)	Lmax (C)	Lmin (Lin)	Lmax (Lin)
S	48.1 20Jul2006 00:09:34	53.6 19Jul2006 23:57:02	60.8 20Jul2006 00:09:37	72.1 19Jul2006 23:57:01	62.7 20Jul2006 00:09:37	77.9 19Jul2006 23:54:40
F	47.7 20Jul2006 00:09:33	55.3 19Jul2006 23:57:01	59.4 20Jul2006 00:09:37	76.5 19Jul2006 23:57:01	61.1 20Jul2006 00:09:37	78.4 19Jul2006 23:55:38
I	48.2 20Jul2006 00:06:31	58.8 20Jul2006 00:08:44	61.7 19Jul2006 23:54:57	78.8 19Jul2006 23:57:01	64.1 20Jul2006 00:09:37	81.9 19Jul2006 23:55:38

Hz	dB
12.5 Hz	58.0 dB
16 Hz	57.5 dB
20 Hz	57.3 dB
25 Hz	58.3 dB
31.5 Hz	57.5 dB
40 Hz	56.8 dB
50 Hz	56.9 dB
63 Hz	56.3 dB
80 Hz	55.8 dB
100 Hz	53.2 dB
125 Hz	48.9 dB
160 Hz	46.0 dB
200 Hz	45.0 dB
250 Hz	44.0 dB
315 Hz	44.6 dB
400 Hz	44.9 dB
500 Hz	41.9 dB
630 Hz	38.3 dB
800 Hz	36.1 dB
1000 Hz	33.9 dB
1250 Hz	31.4 dB
1600 Hz	29.0 dB
2000 Hz	25.5 dB
2500 Hz	22.9 dB
3150 Hz	46.5 dB
4000 Hz	33.5 dB
5000 Hz	14.2 dB
6300 Hz	19.4 dB
8000 Hz	14.1 dB
10000 Hz	14.9 dB
12500 Hz	15.2 dB
16000 Hz	21.4 dB
20000 Hz	19.7 dB

Hz	dB
12.5 Hz	41.9 dB
16 Hz	44.0 dB
20 Hz	43.9 dB
25 Hz	46.7 dB
31.5 Hz	46.7 dB
40 Hz	46.1 dB
50 Hz	47.5 dB
63 Hz	47.0 dB
80 Hz	46.6 dB
100 Hz	44.7 dB
125 Hz	42.6 dB
160 Hz	39.0 dB
200 Hz	37.4 dB
250 Hz	37.5 dB
315 Hz	38.7 dB
400 Hz	39.8 dB
500 Hz	37.4 dB
630 Hz	34.8 dB
800 Hz	32.9 dB
1000 Hz	30.6 dB
1250 Hz	27.9 dB
1600 Hz	25.0 dB
2000 Hz	21.2 dB
2500 Hz	18.1 dB
3150 Hz	40.9 dB
4000 Hz	25.2 dB
5000 Hz	11.0 dB
6300 Hz	13.9 dB
8000 Hz	9.7 dB
10000 Hz	10.9 dB
12500 Hz	9.9 dB
16000 Hz	12.9 dB
20000 Hz	13.0 dB



Nome misura : Taranto Globali (File N. 11) (07/20/06 01:05:26)

Data, ora misura : 20/07/2006 1.05.26

Durata Misura : 902.3 s

Località: Taranto

Punto di Misura : B1-N2

L1.0: 53.3 dB(A) fast

L10.0: 51.3 dB(A) fast

L50.0: 49.9 dB(A) fast

L90.0: 48.6 dB(A) fast

L95.0: 48.3 dB(A) fast

L99.0: N/A dB(A) fast

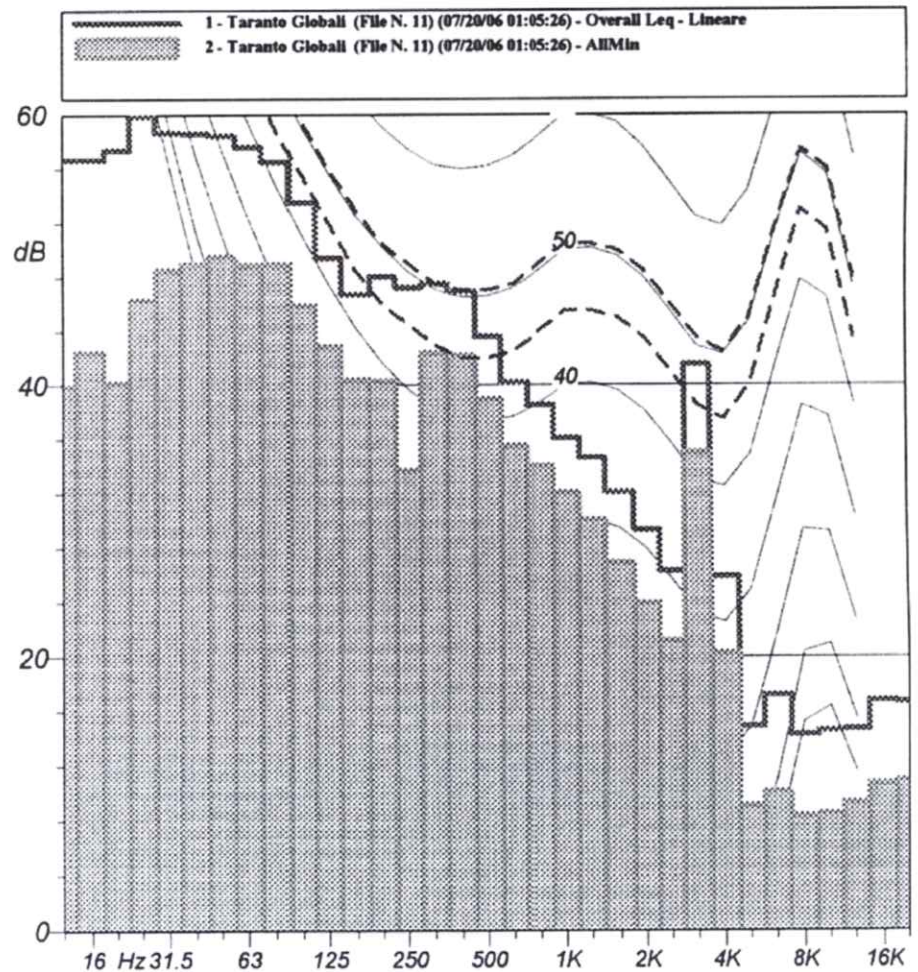
Leq (A) : 50.2 dBA

<i>Leq (A): 50.2 dBA</i>	<i>Leq (C): 65.4 dBC</i>	<i>Leq (Lin): 67.1 dB</i>
<i>SEL (A): 79.8 dBA</i>	<i>SEL (C): 94.9 dBC</i>	<i>SEL (Lin): 96.7 dB</i>
<i>Peak (A): 75.7 dBA (20Jul2006 01:14:29)</i>	<i>Peak (C): 82.0 dBC (20Jul2006 01:13:20)</i>	<i>Peak (Lin): 84.2 dB (20Jul2006 01:19:59)</i>

	<i>Lmin (A)</i>	<i>Lmax (A)</i>	<i>Lmin (C)</i>	<i>Lmax (C)</i>	<i>Lmin (Lin)</i>	<i>Lmax (Lin)</i>
S	47.1 20Jul2006 01:08:32	54.7 20Jul2006 01:16:17	62.8 20Jul2006 01:08:04	68.8 20Jul2006 01:07:11	64.4 20Jul2006 01:10:07	73.1 20Jul2006 01:20:00
F	46.7 20Jul2006 01:08:31	56.7 20Jul2006 01:08:21	61.1 20Jul2006 01:08:33	72.3 20Jul2006 01:13:20	62.8 20Jul2006 01:08:33	76.7 20Jul2006 01:19:59
I	47.1 20Jul2006 01:08:30	58.9 20Jul2006 01:08:21	63.7 20Jul2006 01:08:07	74.8 20Jul2006 01:13:20	65.2 20Jul2006 01:08:33	79.2 20Jul2006 01:19:59

Livello Equivalente	
Hz	dB
12.5 Hz	56.7 dB
16 Hz	56.7 dB
20 Hz	57.4 dB
25 Hz	59.9 dB
31.5 Hz	58.7 dB
40 Hz	58.6 dB
50 Hz	58.5 dB
63 Hz	57.6 dB
80 Hz	56.5 dB
100 Hz	53.5 dB
125 Hz	49.4 dB
160 Hz	46.7 dB
200 Hz	48.0 dB
250 Hz	47.2 dB
315 Hz	47.5 dB
400 Hz	46.9 dB
500 Hz	43.6 dB
630 Hz	40.2 dB
800 Hz	38.5 dB
1000 Hz	36.1 dB
1250 Hz	34.6 dB
1600 Hz	32.1 dB
2000 Hz	29.3 dB
2500 Hz	26.3 dB
3150 Hz	41.5 dB
4000 Hz	25.9 dB
5000 Hz	14.9 dB
6300 Hz	17.2 dB
8000 Hz	14.3 dB
10000 Hz	14.6 dB
12500 Hz	14.7 dB
16000 Hz	16.8 dB
20000 Hz	16.7 dB

Livello Minimo	
Hz	dB
12.5 Hz	39.9 dB
16 Hz	42.5 dB
20 Hz	40.2 dB
25 Hz	46.3 dB
31.5 Hz	48.5 dB
40 Hz	49.0 dB
50 Hz	49.5 dB
63 Hz	48.9 dB
80 Hz	49.0 dB
100 Hz	45.9 dB
125 Hz	42.9 dB
160 Hz	40.4 dB
200 Hz	40.3 dB
250 Hz	33.7 dB
315 Hz	42.4 dB
400 Hz	42.2 dB
500 Hz	39.0 dB
630 Hz	35.5 dB
800 Hz	34.0 dB
1000 Hz	32.0 dB
1250 Hz	30.1 dB
1600 Hz	26.9 dB
2000 Hz	24.0 dB
2500 Hz	21.2 dB
3150 Hz	35.0 dB
4000 Hz	20.3 dB
5000 Hz	9.1 dB
6300 Hz	10.1 dB
8000 Hz	8.3 dB
10000 Hz	8.5 dB
12500 Hz	9.3 dB
16000 Hz	10.7 dB
20000 Hz	11.0 dB



Nome misura : Taranto Globali (File N. 2) (07/19/06 16:05:37)

Data, ora misura : 19/07/2006 16.05.37

Durata Misura : 1202.0 s

Località: Taranto

Punto di Misura : B2-1

L1.0: 73.0 dB(A) fast

L10.0: 68.4 dB(A) fast

L50.0: 63.3 dB(A) fast

L90.0: 58.9 dB(A) fast

L95.0: 58.1 dB(A) fast

L99.0: N/A dB(A) fast

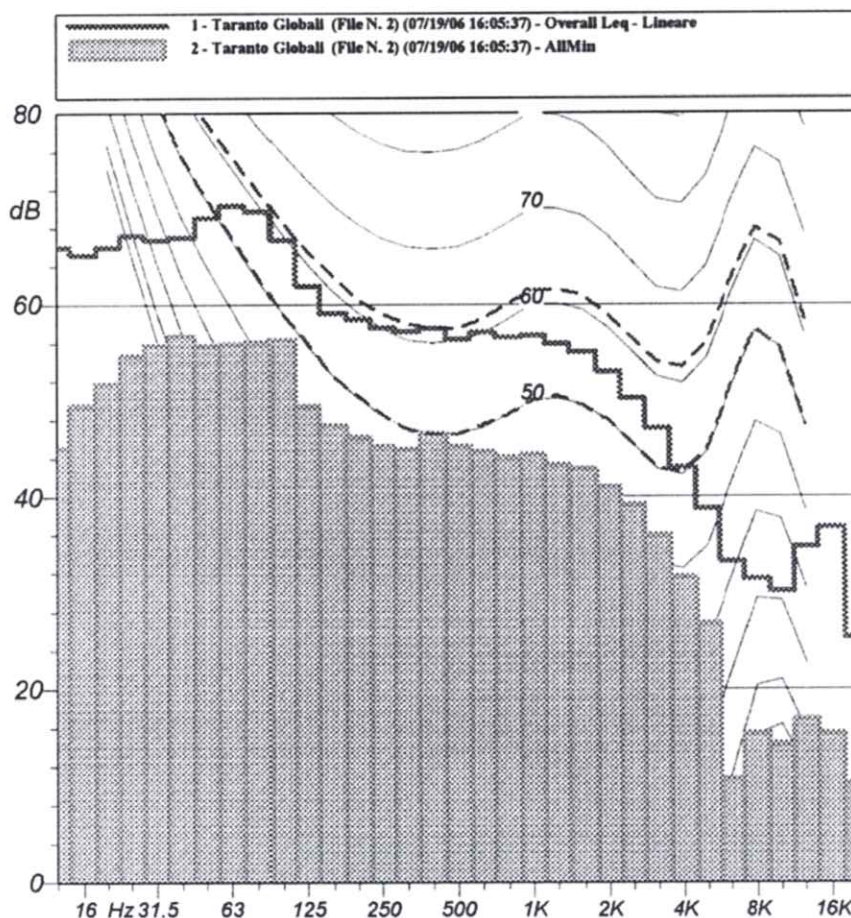
Leq (A) : 65.3 dBA

Leq (A): 65.3 dBA SEL (A): 96.1 dBA Peak (A): 94.7 dBA (19Jul2006 16:11:57)	Leq (C): 76.5 dBC SEL (C): 107.3 dBC Peak (C): 98.7 dBC (19Jul2006 16:11:57)	Leq (Lin): 77.9 dB SEL (Lin): 108.7 dB Peak (Lin): 99.8 dB (19Jul2006 16:11:59)
--	---	--

	Lmin (A)	Lmax (A)	Lmin (C)	Lmax (C)	Lmin (Lin)	Lmax (Lin)
S	55.9 19Jul2006 16:10:45	78.0 19Jul2006 16:11:58	70.6 19Jul2006 16:11:01	87.4 19Jul2006 16:12:35	72.1 19Jul2006 16:13:19	88.1 19Jul2006 16:12:35
F	55.3 19Jul2006 16:10:45	80.9 19Jul2006 16:11:57	69.0 19Jul2006 16:17:24	90.4 19Jul2006 16:09:10	70.4 19Jul2006 16:13:17	91.1 19Jul2006 16:09:10
I	55.6 19Jul2006 16:10:45	81.6 19Jul2006 16:11:57	71.5 19Jul2006 16:17:25	91.7 19Jul2006 16:09:10	73.0 19Jul2006 16:13:17	92.9 19Jul2006 16:07:36

Livello Equivalente	
Hz	dB
12.5 Hz	66.0 dB
16 Hz	65.2 dB
20 Hz	66.0 dB
25 Hz	67.2 dB
31.5 Hz	66.7 dB
40 Hz	67.0 dB
50 Hz	69.0 dB
63 Hz	70.3 dB
80 Hz	69.7 dB
100 Hz	66.7 dB
125 Hz	61.9 dB
160 Hz	59.1 dB
200 Hz	58.5 dB
250 Hz	57.6 dB
315 Hz	57.2 dB
400 Hz	57.5 dB
500 Hz	56.4 dB
630 Hz	57.1 dB
800 Hz	56.6 dB
1000 Hz	56.8 dB
1250 Hz	55.9 dB
1600 Hz	55.0 dB
2000 Hz	53.0 dB
2500 Hz	50.2 dB
3150 Hz	47.1 dB
4000 Hz	43.0 dB
5000 Hz	38.8 dB
6300 Hz	33.2 dB
8000 Hz	31.4 dB
10000 Hz	30.1 dB
12500 Hz	34.8 dB
16000 Hz	36.8 dB
20000 Hz	25.4 dB

Livello Minimo	
Hz	dB
12.5 Hz	45.1 dB
16 Hz	49.5 dB
20 Hz	51.8 dB
25 Hz	54.7 dB
31.5 Hz	55.8 dB
40 Hz	56.7 dB
50 Hz	55.7 dB
63 Hz	55.9 dB
80 Hz	56.1 dB
100 Hz	56.4 dB
125 Hz	49.4 dB
160 Hz	47.4 dB
200 Hz	46.2 dB
250 Hz	45.3 dB
315 Hz	45.0 dB
400 Hz	46.6 dB
500 Hz	45.3 dB
630 Hz	44.7 dB
800 Hz	44.1 dB
1000 Hz	44.3 dB
1250 Hz	43.3 dB
1600 Hz	42.9 dB
2000 Hz	41.0 dB
2500 Hz	39.2 dB
3150 Hz	36.0 dB
4000 Hz	31.6 dB
5000 Hz	26.8 dB
6300 Hz	10.7 dB
8000 Hz	15.4 dB
10000 Hz	14.3 dB
12500 Hz	16.9 dB
16000 Hz	15.4 dB
20000 Hz	10.2 dB



Nome misura : Taranto Globali (File N. 5) (07/19/06 17:56:34)

Data, ora misura : 19/07/2006 17.56.34

Durata Misura : 1201.1 s

Località: Taranto

Punto di Misura : B2-2

L1.0: 74.4 dB(A) fast
 L10.0: 69.2 dB(A) fast
 L50.0: 64.5 dB(A) fast
 L90.0: 60.1 dB(A) fast
 L95.0: 59.0 dB(A) fast
 L99.0: N/A dB(A) fast

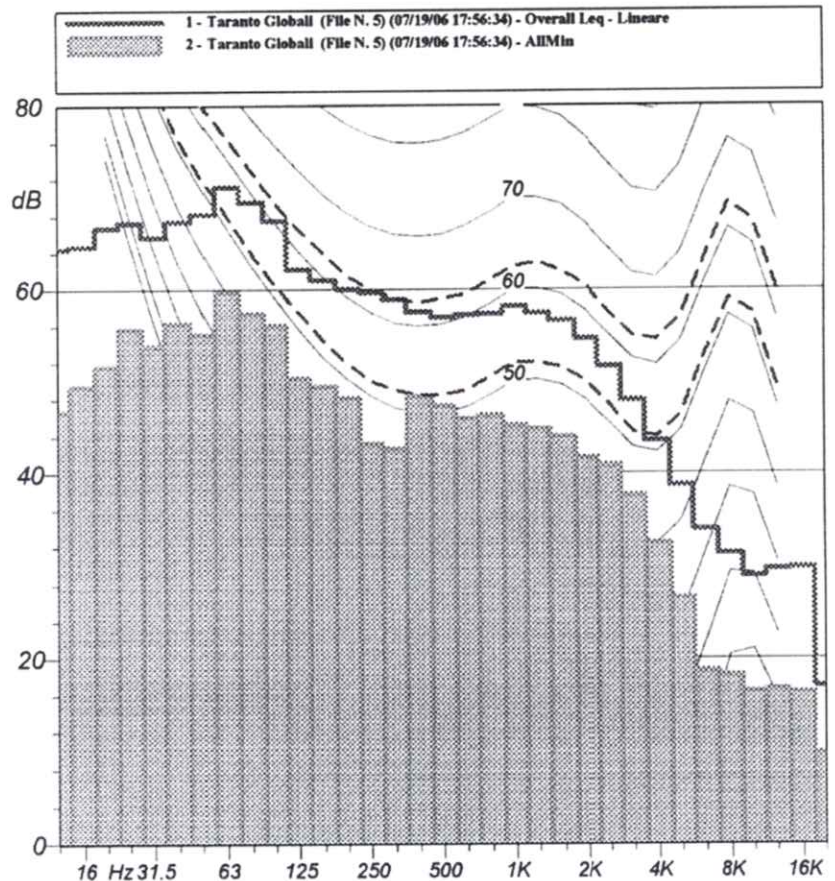
Leq (A) : 66.4 dBA

Leq (A): 66.4 dBA SEL (A): 97.2 dBA Peak (A): 96.7 dBA (19Jul2006 18:07:33)	Leq (C): 76.8 dBC SEL (C): 107.6 dBC Peak (C): 97.6 dBC (19Jul2006 18:04:56)	Leq (Lin): 78.0 dB SEL (Lin): 108.8 dB Peak (Lin): 98.6 dB (19Jul2006 18:00:01)
---	--	---

	<i>Lmin (A)</i>	<i>Lmax (A)</i>	<i>Lmin (C)</i>	<i>Lmax (C)</i>	<i>Lmin (Lin)</i>	<i>Lmax (Lin)</i>
S	57.2 19Jul2006 18:06:21	76.3 19Jul2006 18:09:47	71.5 19Jul2006 18:06:20	87.8 19Jul2006 18:04:58	72.9 19Jul2006 18:06:20	88.7 19Jul2006 18:04:58
F	56.8 19Jul2006 18:06:20	80.3 19Jul2006 18:07:33	69.2 19Jul2006 18:06:19	90.2 19Jul2006 18:04:57	70.6 19Jul2006 18:06:20	91.1 19Jul2006 18:04:57
I	57.0 19Jul2006 18:06:20	83.0 19Jul2006 18:07:33	72.2 19Jul2006 18:02:18	91.1 19Jul2006 18:04:57	74.0 19Jul2006 18:06:20	93.9 19Jul2006 18:00:01

Livello Equivalente	
Hz	dB
12.5 Hz	64.4 dB
16 Hz	64.7 dB
20 Hz	66.7 dB
25 Hz	67.3 dB
31.5 Hz	65.7 dB
40 Hz	67.4 dB
50 Hz	68.2 dB
63 Hz	71.1 dB
80 Hz	69.5 dB
100 Hz	67.5 dB
125 Hz	62.2 dB
160 Hz	61.0 dB
200 Hz	60.0 dB
250 Hz	59.6 dB
315 Hz	58.9 dB
400 Hz	57.5 dB
500 Hz	56.9 dB
630 Hz	57.2 dB
800 Hz	57.3 dB
1000 Hz	58.1 dB
1250 Hz	57.4 dB
1600 Hz	56.6 dB
2000 Hz	54.6 dB
2500 Hz	51.6 dB
3150 Hz	47.9 dB
4000 Hz	43.5 dB
5000 Hz	38.7 dB
6300 Hz	33.9 dB
8000 Hz	31.3 dB
10000 Hz	28.9 dB
12500 Hz	29.6 dB
16000 Hz	29.8 dB
20000 Hz	17.0 dB

Livello Minimo	
Hz	dB
12.5 Hz	46.7 dB
16 Hz	49.4 dB
20 Hz	51.6 dB
25 Hz	55.6 dB
31.5 Hz	53.8 dB
40 Hz	56.3 dB
50 Hz	55.1 dB
63 Hz	59.7 dB
80 Hz	57.3 dB
100 Hz	56.1 dB
125 Hz	50.3 dB
160 Hz	49.4 dB
200 Hz	48.1 dB
250 Hz	43.2 dB
315 Hz	42.6 dB
400 Hz	48.3 dB
500 Hz	47.3 dB
630 Hz	45.9 dB
800 Hz	46.3 dB
1000 Hz	45.2 dB
1250 Hz	44.8 dB
1600 Hz	44.0 dB
2000 Hz	41.7 dB
2500 Hz	40.9 dB
3150 Hz	37.6 dB
4000 Hz	32.4 dB
5000 Hz	26.6 dB
6300 Hz	18.7 dB
8000 Hz	18.2 dB
10000 Hz	16.4 dB
12500 Hz	16.6 dB
16000 Hz	16.3 dB
20000 Hz	9.8 dB



Nome misura : Taranto Globali (File N. 15) (07/20/06 10:59:15)

Data, ora misura : 20/07/2006 10.59.15

Durata Misura : 1200.6 s

Località: Taranto

Punto di Misura : B2-3

L1.0: 75.6 dB(A) fast

L10.0: 71.1 dB(A) fast

L50.0: 65.4 dB(A) fast

L90.0: 60.8 dB(A) fast

L95.0: 60.0 dB(A) fast

L99.0: N/A dB(A) fast

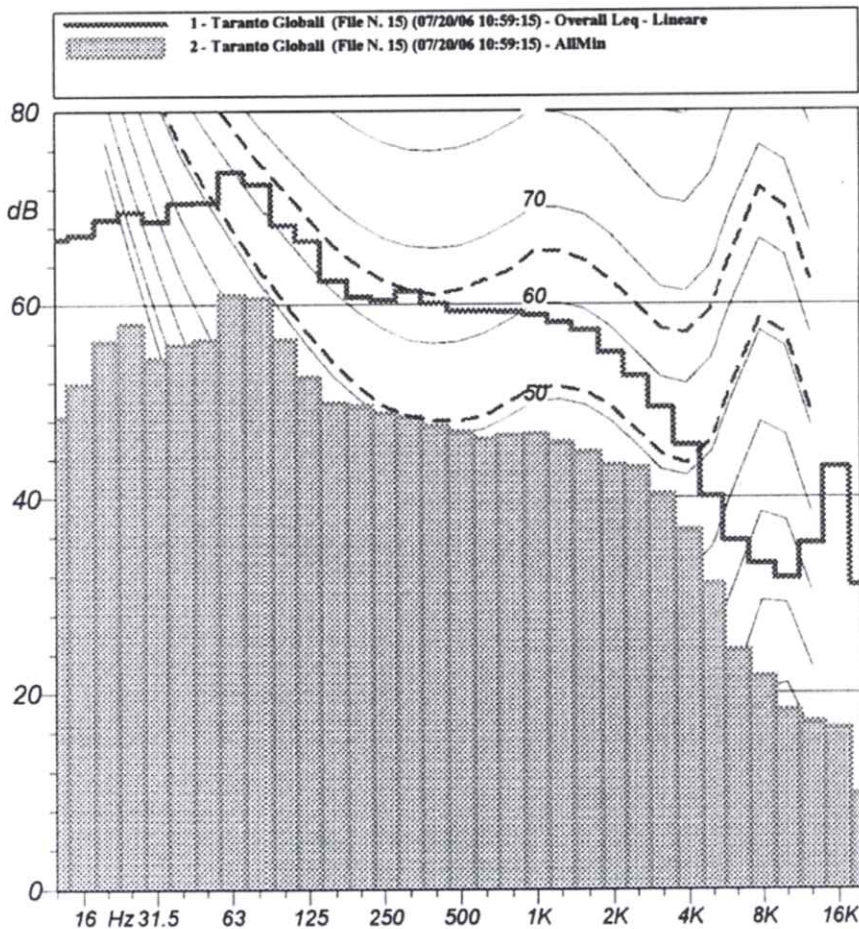
Leq (A) : 67.8 dBA

Leq (A): 67.8 dBA SEL (A): 98.6 dBA Peak (A): 94.4 dBA (20Jul2006 11:18:50)	Leq (C): 79.3 dBC SEL (C): 110.1 dBC Peak (C): 102.9 dBC (20Jul2006 11:18:51)	Leq (Lin): 80.4 dB SEL (Lin): 111.2 dB Peak (Lin): 102.7 dB (20Jul2006 11:18:51)
---	---	--

	Lmin (A)	Lmax (A)	Lmin (C)	Lmax (C)	Lmin (Lin)	Lmax (Lin)
S	58.8 20Jul2006 11:16:24	81.0 20Jul2006 11:18:51	72.8 20Jul2006 11:16:24	91.6 20Jul2006 11:18:53	74.5 20Jul2006 11:16:23	91.9 20Jul2006 11:18:53
F	57.0 20Jul2006 11:06:50	83.0 20Jul2006 11:18:51	71.1 20Jul2006 11:16:24	93.9 20Jul2006 11:18:51	72.8 20Jul2006 11:16:24	94.2 20Jul2006 11:18:51
I	58.2 20Jul2006 11:16:23	83.2 20Jul2006 11:18:51	74.1 20Jul2006 11:16:23	94.6 20Jul2006 11:18:51	75.7 20Jul2006 11:16:24	94.9 20Jul2006 11:18:51

Livello Equivalente	
Hz	dB
12.5 Hz	66.8 dB
16 Hz	67.2 dB
20 Hz	68.8 dB
25 Hz	69.6 dB
31.5 Hz	68.6 dB
40 Hz	70.5 dB
50 Hz	70.6 dB
63 Hz	73.7 dB
80 Hz	72.5 dB
100 Hz	68.2 dB
125 Hz	66.6 dB
160 Hz	62.5 dB
200 Hz	60.8 dB
250 Hz	60.4 dB
315 Hz	61.4 dB
400 Hz	60.1 dB
500 Hz	59.3 dB
630 Hz	59.3 dB
800 Hz	59.2 dB
1000 Hz	58.9 dB
1250 Hz	58.1 dB
1600 Hz	57.3 dB
2000 Hz	55.0 dB
2500 Hz	52.6 dB
3150 Hz	49.3 dB
4000 Hz	45.4 dB
5000 Hz	40.1 dB
6300 Hz	35.6 dB
8000 Hz	33.2 dB
10000 Hz	31.7 dB
12500 Hz	35.3 dB
16000 Hz	43.1 dB
20000 Hz	31.0 dB

Livello Minimo	
Hz	dB
12.5 Hz	48.3 dB
16 Hz	51.8 dB
20 Hz	56.2 dB
25 Hz	58.0 dB
31.5 Hz	54.4 dB
40 Hz	55.8 dB
50 Hz	56.4 dB
63 Hz	61.0 dB
80 Hz	60.7 dB
100 Hz	56.4 dB
125 Hz	52.5 dB
160 Hz	49.8 dB
200 Hz	49.5 dB
250 Hz	48.8 dB
315 Hz	48.4 dB
400 Hz	47.4 dB
500 Hz	46.8 dB
630 Hz	46.1 dB
800 Hz	46.4 dB
1000 Hz	46.6 dB
1250 Hz	45.7 dB
1600 Hz	44.7 dB
2000 Hz	43.4 dB
2500 Hz	43.1 dB
3150 Hz	40.3 dB
4000 Hz	36.7 dB
5000 Hz	31.2 dB
6300 Hz	24.4 dB
8000 Hz	21.7 dB
10000 Hz	18.2 dB
12500 Hz	17.0 dB
16000 Hz	16.4 dB
20000 Hz	9.6 dB



Nome misura : Taranto Globali (File N. 9) (07/20/06 00:19:25)

Data, ora misura : 20/07/2006 0.19.25

Durata Misura : 921.1 s

Località: Taranto

Punto di Misura : B2-N1

L1.0: 71.0 dB(A) fast
 L10.0: 65.7 dB(A) fast
 L50.0: 61.3 dB(A) fast
 L90.0: 59.0 dB(A) fast
 L95.0: 58.6 dB(A) fast
 L99.0: N/A dB(A) fast

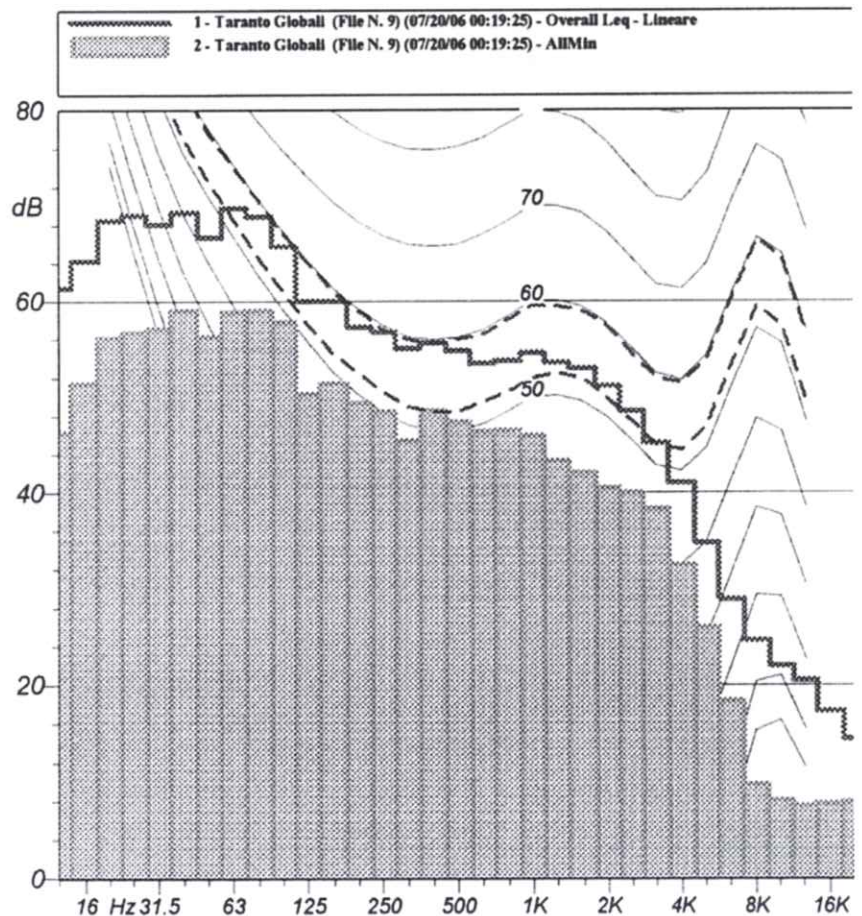
Leq (A) : 63.2 dBA

Leq (A): 63.2 dBA SEL (A): 92.9 dBA Peak (A): 88.7 dBA (20Jul2006 00:29:04)	Leq (C): 76.1 dBC SEL (C): 105.8 dBC Peak (C): 96.4 dBC (20Jul2006 00:29:04)	Leq (Lin): 77.5 dB SEL (Lin): 107.1 dB Peak (Lin): 96.9 dB (20Jul2006 00:29:04)
---	--	---

	Lmin (A)	Lmax (A)	Lmin (C)	Lmax (C)	Lmin (Lin)	Lmax (Lin)
S	57.3 20Jul2006 00:28:43	74.1 20Jul2006 00:29:08	73.0 20Jul2006 00:30:08	84.9 20Jul2006 00:29:06	74.7 20Jul2006 00:30:08	85.6 20Jul2006 00:29:07
F	56.8 20Jul2006 00:28:42	76.3 20Jul2006 00:29:04	71.1 20Jul2006 00:32:21	86.8 20Jul2006 00:29:04	72.7 20Jul2006 00:29:16	87.7 20Jul2006 00:29:04
I	57.3 20Jul2006 00:28:42	77.6 20Jul2006 00:29:04	73.6 20Jul2006 00:30:08	88.1 20Jul2006 00:29:04	75.3 20Jul2006 00:29:16	88.8 20Jul2006 00:29:04

Livello Equivalente	
Hz	dB
12.5 Hz	61.4 dB
16 Hz	64.2 dB
20 Hz	68.5 dB
25 Hz	69.0 dB
31.5 Hz	68.1 dB
40 Hz	69.3 dB
50 Hz	66.7 dB
63 Hz	69.8 dB
80 Hz	68.9 dB
100 Hz	65.8 dB
125 Hz	60.0 dB
160 Hz	60.0 dB
200 Hz	57.3 dB
250 Hz	56.8 dB
315 Hz	55.1 dB
400 Hz	55.6 dB
500 Hz	54.8 dB
630 Hz	53.5 dB
800 Hz	53.8 dB
1000 Hz	54.6 dB
1250 Hz	53.6 dB
1600 Hz	53.0 dB
2000 Hz	51.2 dB
2500 Hz	48.5 dB
3150 Hz	45.2 dB
4000 Hz	41.0 dB
5000 Hz	34.8 dB
6300 Hz	28.9 dB
8000 Hz	24.6 dB
10000 Hz	22.0 dB
12500 Hz	20.5 dB
16000 Hz	17.3 dB
20000 Hz	14.5 dB

Livello Minimo	
Hz	dB
12.5 Hz	46.3 dB
16 Hz	51.4 dB
20 Hz	56.2 dB
25 Hz	56.7 dB
31.5 Hz	57.2 dB
40 Hz	59.1 dB
50 Hz	56.3 dB
63 Hz	58.9 dB
80 Hz	59.1 dB
100 Hz	57.8 dB
125 Hz	50.3 dB
160 Hz	51.5 dB
200 Hz	49.4 dB
250 Hz	48.5 dB
315 Hz	45.5 dB
400 Hz	48.6 dB
500 Hz	47.4 dB
630 Hz	46.4 dB
800 Hz	46.5 dB
1000 Hz	46.0 dB
1250 Hz	43.4 dB
1600 Hz	42.1 dB
2000 Hz	40.5 dB
2500 Hz	40.0 dB
3150 Hz	38.3 dB
4000 Hz	32.5 dB
5000 Hz	26.0 dB
6300 Hz	18.3 dB
8000 Hz	9.8 dB
10000 Hz	8.2 dB
12500 Hz	7.5 dB
16000 Hz	7.8 dB
20000 Hz	8.0 dB



Nome misura : Taranto Globali (File N. 12) (07/20/06 02:59:53)

Data, ora misura : 20/07/2006 2.59.53

Durata Misura : 902.8 s

Località: Taranto

Punto di Misura : B2-N2

L1.0: 70.8 dB(A) fast
 L10.0: 64.2 dB(A) fast
 L50.0: 58.4 dB(A) fast
 L90.0: 56.8 dB(A) fast
 L95.0: 56.5 dB(A) fast
 L99.0: N/A dB(A) fast

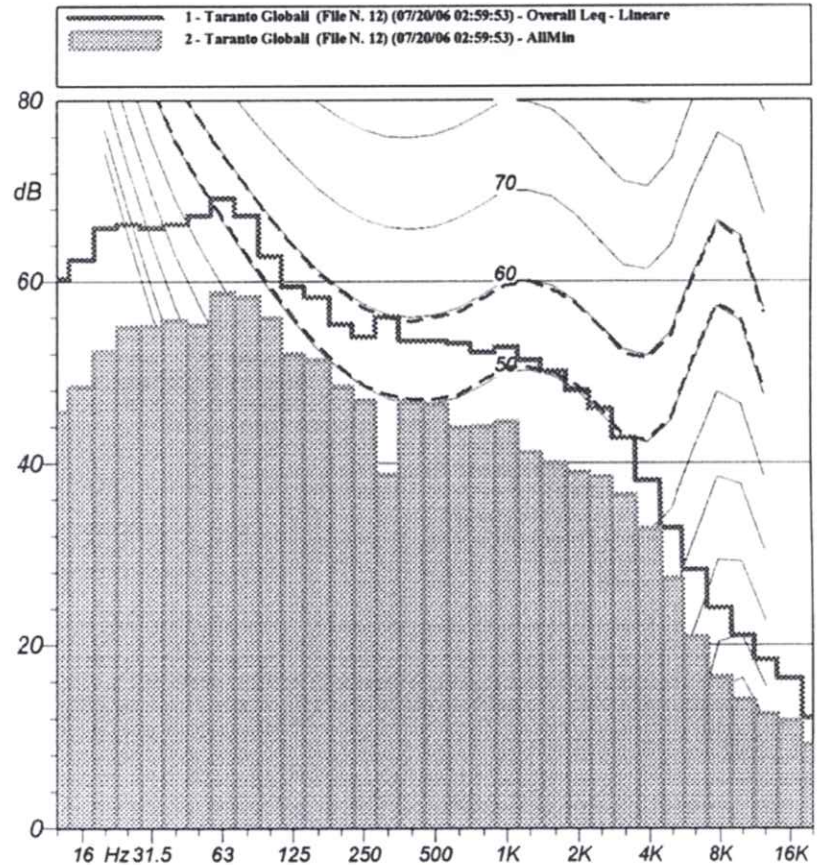
Leq (A) : 61.3 dBA

Leq (A): 61.3 dBA SEL (A): 90.9 dBA Peak (A): 86.3 dBA (20Jul2006 03:12:51)	Leq (C): 74.6 dBC SEL (C): 104.2 dBC Peak (C): 97.5 dBC (20Jul2006 03:12:51)	Leq (Lin): 75.8 dB SEL (Lin): 105.4 dB Peak (Lin): 98.2 dB (20Jul2006 03:12:51)
--	---	--

	Lmin (A)	Lmax (A)	Lmin (C)	Lmax (C)	Lmin (Lin)	Lmax (Lin)
S	56.0 20Jul2006 03:02:02	72.6 20Jul2006 03:12:51	71.1 20Jul2006 03:14:32	89.1 20Jul2006 03:12:52	72.6 20Jul2006 03:03:49	89.9 20Jul2006 03:12:52
F	55.6 20Jul2006 03:02:01	74.2 20Jul2006 03:12:51	69.5 20Jul2006 03:14:35	91.1 20Jul2006 03:12:51	70.9 20Jul2006 03:14:35	91.9 20Jul2006 03:12:51
I	56.0 20Jul2006 03:14:34	75.1 20Jul2006 03:12:51	72.0 20Jul2006 03:03:48	91.8 20Jul2006 03:12:51	73.6 20Jul2006 03:14:35	92.5 20Jul2006 03:12:51

Livello Equivalente	
Hz	dB
12.5 Hz	60.3 dB
16 Hz	62.4 dB
20 Hz	65.9 dB
25 Hz	66.3 dB
31.5 Hz	65.9 dB
40 Hz	66.3 dB
50 Hz	67.3 dB
63 Hz	69.2 dB
80 Hz	67.3 dB
100 Hz	62.8 dB
125 Hz	59.4 dB
160 Hz	58.2 dB
200 Hz	55.2 dB
250 Hz	53.9 dB
315 Hz	56.0 dB
400 Hz	53.4 dB
500 Hz	53.4 dB
630 Hz	53.1 dB
800 Hz	52.2 dB
1000 Hz	52.7 dB
1250 Hz	51.3 dB
1600 Hz	50.1 dB
2000 Hz	48.0 dB
2500 Hz	46.0 dB
3150 Hz	42.8 dB
4000 Hz	38.1 dB
5000 Hz	32.9 dB
6300 Hz	28.3 dB
8000 Hz	24.1 dB
10000 Hz	21.0 dB
12500 Hz	18.4 dB
16000 Hz	16.4 dB
20000 Hz	12.1 dB

Livello Minimo	
Hz	dB
12.5 Hz	45.6 dB
16 Hz	48.4 dB
20 Hz	52.3 dB
25 Hz	54.9 dB
31.5 Hz	55.0 dB
40 Hz	55.6 dB
50 Hz	55.1 dB
63 Hz	58.7 dB
80 Hz	58.3 dB
100 Hz	55.9 dB
125 Hz	52.0 dB
160 Hz	51.3 dB
200 Hz	48.4 dB
250 Hz	46.9 dB
315 Hz	38.8 dB
400 Hz	46.8 dB
500 Hz	46.4 dB
630 Hz	43.9 dB
800 Hz	44.0 dB
1000 Hz	44.5 dB
1250 Hz	41.2 dB
1600 Hz	40.0 dB
2000 Hz	39.0 dB
2500 Hz	38.5 dB
3150 Hz	36.5 dB
4000 Hz	32.8 dB
5000 Hz	27.3 dB
6300 Hz	20.9 dB
8000 Hz	16.5 dB
10000 Hz	14.1 dB
12500 Hz	12.5 dB
16000 Hz	11.8 dB
20000 Hz	9.1 dB



Nome misura : Taranto Globali (File N. 3) (07/19/06 16:52:23)

Data, ora misura : 19/07/2006 16.52.23

Durata Misura : 1200.8 s

Località: Taranto

Punto di Misura : B3-1

L1.0: 72.2 dB(A) fast
 L10.0: 60.6 dB(A) fast
 L50.0: 57.5 dB(A) fast
 L90.0: 56.1 dB(A) fast
 L95.0: 55.8 dB(A) fast
 L99.0: N/A dB(A) fast

Leq (A) : 60.6 dBA

Leq (A): 60.6 dBA SEL (A): 91.4 dBA Peak (A): 92.0 dBA (19Jul2006 17:05:25)	Leq (C): 73.7 dBC SEL (C): 104.6 dBC Peak (C): 96.8 dBC (19Jul2006 17:05:26)	Leq (Lin): 76.5 dB SEL (Lin): 107.3 dB Peak (Lin): 97.5 dB (19Jul2006 17:05:26)
--	---	--

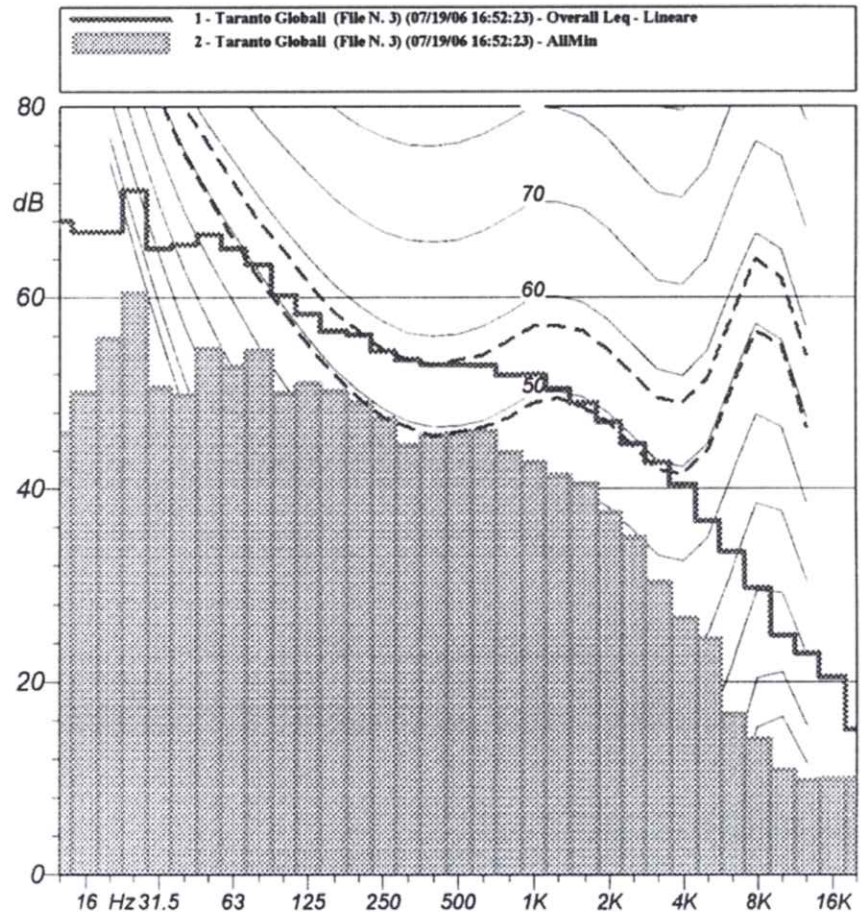
	Lmin (A)	Lmax (A)	Lmin (C)	Lmax (C)	Lmin (Lin)	Lmax (Lin)
S	55.1 19Jul2006 17:07:30	78.3 19Jul2006 17:05:26	69.8 19Jul2006 16:54:41	86.2 19Jul2006 17:09:18	71.8 19Jul2006 16:54:41	87.7 19Jul2006 17:09:18
F	54.7 19Jul2006 17:07:13	80.2 19Jul2006 17:05:25	68.4 19Jul2006 16:54:40	89.2 19Jul2006 17:09:14	69.9 19Jul2006 17:06:38	90.7 19Jul2006 17:09:14
I	54.8 19Jul2006 17:07:19	80.7 19Jul2006 17:05:25	70.4 19Jul2006 16:54:41	90.4 19Jul2006 17:09:14	72.7 19Jul2006 17:06:38	91.7 19Jul2006 17:09:14

Livello Equivalente

Hz	dB
12.5 Hz	68.0 dB
16 Hz	66.9 dB
20 Hz	66.9 dB
25 Hz	71.2 dB
31.5 Hz	65.1 dB
40 Hz	65.5 dB
50 Hz	66.6 dB
63 Hz	65.1 dB
80 Hz	63.4 dB
100 Hz	60.2 dB
125 Hz	58.3 dB
160 Hz	56.5 dB
200 Hz	56.1 dB
250 Hz	54.4 dB
315 Hz	53.5 dB
400 Hz	53.0 dB
500 Hz	53.0 dB
630 Hz	52.9 dB
800 Hz	51.9 dB
1000 Hz	52.0 dB
1250 Hz	50.5 dB
1600 Hz	49.0 dB
2000 Hz	47.0 dB
2500 Hz	44.7 dB
3150 Hz	42.8 dB
4000 Hz	40.4 dB
5000 Hz	36.7 dB
6300 Hz	33.5 dB
8000 Hz	29.7 dB
10000 Hz	24.8 dB
12500 Hz	22.9 dB
16000 Hz	20.5 dB
20000 Hz	15.1 dB

Livello Minimo

Hz	dB
12.5 Hz	45.9 dB
16 Hz	50.1 dB
20 Hz	55.7 dB
25 Hz	60.4 dB
31.5 Hz	50.6 dB
40 Hz	49.7 dB
50 Hz	54.6 dB
63 Hz	52.8 dB
80 Hz	54.5 dB
100 Hz	50.0 dB
125 Hz	51.0 dB
160 Hz	50.2 dB
200 Hz	49.0 dB
250 Hz	47.4 dB
315 Hz	44.6 dB
400 Hz	45.6 dB
500 Hz	45.8 dB
630 Hz	46.1 dB
800 Hz	43.8 dB
1000 Hz	42.8 dB
1250 Hz	41.4 dB
1600 Hz	40.5 dB
2000 Hz	37.5 dB
2500 Hz	34.9 dB
3150 Hz	30.3 dB
4000 Hz	26.6 dB
5000 Hz	24.4 dB
6300 Hz	16.6 dB
8000 Hz	14.1 dB
10000 Hz	10.9 dB
12500 Hz	9.8 dB
16000 Hz	9.9 dB
20000 Hz	10.0 dB



Nome misura : Taranto Globali (File N. 6) (07/19/06 18:25:36)

Data, ora misura : 19/07/2006 18.25.36

Durata Misura : 1201.6 s

Località: Taranto

Punto di Misura : B3-2

L1.0: 71.2 dB(A) fast
 L10.0: 62.3 dB(A) fast
 L50.0: 59.7 dB(A) fast
 L90.0: 58.4 dB(A) fast
 L95.0: 58.1 dB(A) fast
 L99.0: N/A dB(A) fast

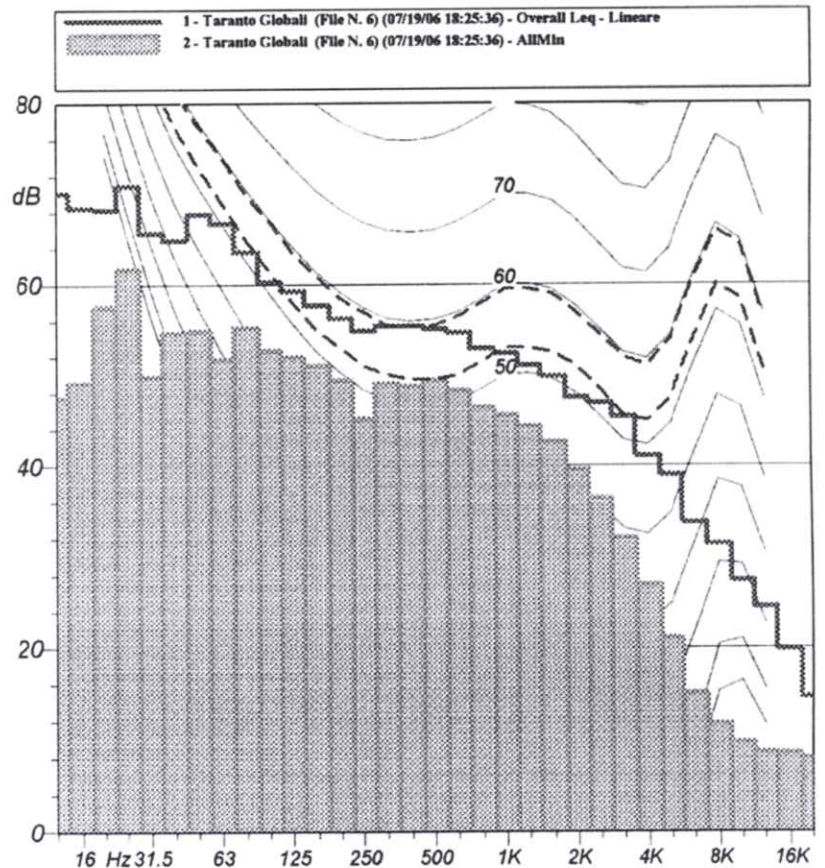
Leq (A) : 61.8 dBA

Leq (A): 61.8 dBA SEL (A): 92.6 dBA Peak (A): 98.8 dBA (19Jul2006 18:28:49)	Leq (C): 74.5 dBC SEL (C): 105.4 dBC Peak (C): 99.9 dBC (19Jul2006 18:28:04)	Leq (Lin): 77.7 dB SEL (Lin): 108.5 dB Peak (Lin): 101.3 dB (19Jul2006 18:28:04)
---	--	--

	Lmin (A)	Lmax (A)	Lmin (C)	Lmax (C)	Lmin (Lin)	Lmax (Lin)
S	57.2 19Jul2006 18:42:37	79.8 19Jul2006 18:28:49	70.3 19Jul2006 18:41:51	87.1 19Jul2006 18:28:50	72.4 19Jul2006 18:41:51	88.1 19Jul2006 18:28:50
F	56.8 19Jul2006 18:42:37	85.5 19Jul2006 18:28:49	68.8 19Jul2006 18:41:51	89.8 19Jul2006 18:28:50	70.3 19Jul2006 18:41:51	92.5 19Jul2006 18:33:48
I	57.1 19Jul2006 18:42:37	88.7 19Jul2006 18:28:49	71.6 19Jul2006 18:40:58	91.9 19Jul2006 18:28:04	73.4 19Jul2006 18:41:51	95.7 19Jul2006 18:33:48

Hz	dB
12.5 Hz	70.1 dB
16 Hz	68.5 dB
20 Hz	68.3 dB
25 Hz	70.9 dB
31.5 Hz	65.7 dB
40 Hz	64.9 dB
50 Hz	67.8 dB
63 Hz	66.8 dB
80 Hz	63.6 dB
100 Hz	60.3 dB
125 Hz	59.3 dB
160 Hz	57.7 dB
200 Hz	56.3 dB
250 Hz	54.9 dB
315 Hz	55.4 dB
400 Hz	55.4 dB
500 Hz	55.1 dB
630 Hz	54.7 dB
800 Hz	52.9 dB
1000 Hz	52.4 dB
1250 Hz	51.0 dB
1600 Hz	49.8 dB
2000 Hz	47.5 dB
2500 Hz	46.9 dB
3150 Hz	45.4 dB
4000 Hz	41.1 dB
5000 Hz	39.0 dB
6300 Hz	33.8 dB
8000 Hz	31.4 dB
10000 Hz	27.4 dB
12500 Hz	24.5 dB
16000 Hz	19.8 dB
20000 Hz	14.6 dB

Hz	dB
12.5 Hz	47.5 dB
16 Hz	49.1 dB
20 Hz	57.6 dB
25 Hz	61.7 dB
31.5 Hz	49.8 dB
40 Hz	54.7 dB
50 Hz	54.9 dB
63 Hz	51.8 dB
80 Hz	55.3 dB
100 Hz	52.7 dB
125 Hz	52.0 dB
160 Hz	51.0 dB
200 Hz	49.4 dB
250 Hz	45.2 dB
315 Hz	49.0 dB
400 Hz	48.8 dB
500 Hz	49.4 dB
630 Hz	48.3 dB
800 Hz	46.4 dB
1000 Hz	45.6 dB
1250 Hz	44.3 dB
1600 Hz	42.6 dB
2000 Hz	39.6 dB
2500 Hz	36.4 dB
3150 Hz	32.1 dB
4000 Hz	26.9 dB
5000 Hz	21.0 dB
6300 Hz	15.0 dB
8000 Hz	11.7 dB
10000 Hz	9.7 dB
12500 Hz	8.6 dB
16000 Hz	8.5 dB
20000 Hz	8.0 dB



Nome misura : Taranto Globali (File N. 13) (07/20/06 09:51:11)

Data, ora misura : 20/07/2006 9.51.11

Durata Misura : 1201.6 s

Località: Taranto

Punto di Misura : B3-3

L1.0: 73.0 dB(A) fast

L10.0: 65.5 dB(A) fast

L50.0: 59.4 dB(A) fast

L90.0: 57.0 dB(A) fast

L95.0: 56.6 dB(A) fast

L99.0: N/A dB(A) fast

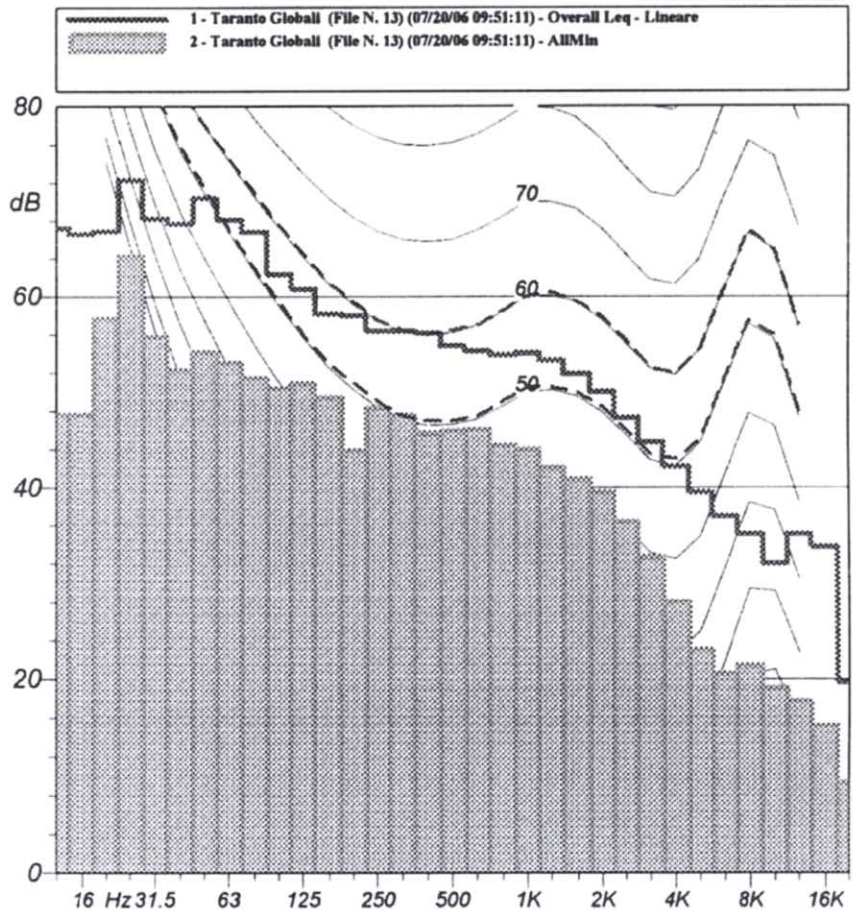
Leq (A) : 63.0 dBA

<i>Leq (A): 63.0 dBA</i> <i>SEL (A): 93.8 dBA</i> <i>Peak (A): 93.8 dBA</i> (20Jul2006 10:06:30)	<i>Leq (C): 76.1 dBC</i> <i>SEL (C): 106.9 dBC</i> <i>Peak (C): 99.8 dBC</i> (20Jul2006 09:52:36)	<i>Leq (Lin): 78.2 dB</i> <i>SEL (Lin): 109.0 dB</i> <i>Peak (Lin): 102.1 dB</i> (20Jul2006 09:58:49)
--	---	---

	<i>Lmin (A)</i>	<i>Lmax (A)</i>	<i>Lmin (C)</i>	<i>Lmax (C)</i>	<i>Lmin (Lin)</i>	<i>Lmax (Lin)</i>
S	55.6 20Jul2006 09:55:36	76.4 20Jul2006 10:06:30	71.2 20Jul2006 09:54:36	90.0 20Jul2006 09:52:36	73.5 20Jul2006 09:55:34	90.9 20Jul2006 09:52:36
F	55.2 20Jul2006 09:55:36	81.8 20Jul2006 10:06:30	69.7 20Jul2006 09:54:45	93.1 20Jul2006 09:52:36	71.7 20Jul2006 09:55:34	93.9 20Jul2006 09:52:36
I	55.5 20Jul2006 09:55:36	84.4 20Jul2006 10:06:30	71.9 20Jul2006 09:55:34	93.7 20Jul2006 09:52:36	74.3 20Jul2006 09:55:34	97.2 20Jul2006 09:58:49

Livello Equivalente	
Hz	dB
12.5 Hz	67.2 dB
16 Hz	66.6 dB
20 Hz	66.9 dB
25 Hz	72.3 dB
31.5 Hz	68.2 dB
40 Hz	67.7 dB
50 Hz	70.4 dB
63 Hz	68.1 dB
80 Hz	66.8 dB
100 Hz	62.3 dB
125 Hz	60.8 dB
160 Hz	58.2 dB
200 Hz	58.0 dB
250 Hz	56.4 dB
315 Hz	56.4 dB
400 Hz	56.2 dB
500 Hz	54.8 dB
630 Hz	54.3 dB
800 Hz	53.9 dB
1000 Hz	54.1 dB
1250 Hz	53.3 dB
1600 Hz	51.9 dB
2000 Hz	50.0 dB
2500 Hz	47.3 dB
3150 Hz	44.7 dB
4000 Hz	42.2 dB
5000 Hz	39.5 dB
6300 Hz	37.0 dB
8000 Hz	35.1 dB
10000 Hz	32.0 dB
12500 Hz	35.1 dB
16000 Hz	33.8 dB
20000 Hz	19.7 dB

Livello Minimo	
Hz	dB
12.5 Hz	47.7 dB
16 Hz	47.7 dB
20 Hz	57.7 dB
25 Hz	64.2 dB
31.5 Hz	55.7 dB
40 Hz	52.3 dB
50 Hz	54.2 dB
63 Hz	53.1 dB
80 Hz	51.5 dB
100 Hz	50.4 dB
125 Hz	50.9 dB
160 Hz	49.4 dB
200 Hz	43.9 dB
250 Hz	48.3 dB
315 Hz	47.6 dB
400 Hz	45.7 dB
500 Hz	45.9 dB
630 Hz	46.1 dB
800 Hz	44.4 dB
1000 Hz	44.0 dB
1250 Hz	42.1 dB
1600 Hz	40.9 dB
2000 Hz	39.5 dB
2500 Hz	36.4 dB
3150 Hz	32.7 dB
4000 Hz	28.0 dB
5000 Hz	23.0 dB
6300 Hz	20.5 dB
8000 Hz	21.4 dB
10000 Hz	19.1 dB
12500 Hz	17.7 dB
16000 Hz	15.2 dB
20000 Hz	9.3 dB



Nome misura : Taranto Globali (File N. 7) (07/19/06 23:29:25)

Data, ora misura : 19/07/2006 23.29.25

Durata Misura : 956.3 s

Località: Taranto

Punto di Misura : B3-N1

L1.0: 66.0 dB(A) fast

L10.0: 59.9 dB(A) fast

L50.0: 57.4 dB(A) fast

L90.0: 56.5 dB(A) fast

L95.0: 56.3 dB(A) fast

L99.0: N/A dB(A) fast

Leq (A) : 58.7 dBA

<i>Leq (A): 58.7 dBA</i> <i>SEL (A): 88.5 dBA</i> <i>Peak (A): 83.2 dBA</i> (19Jul2006 23:41:10)	<i>Leq (C): 71.2 dBC</i> <i>SEL (C): 101.1 dBC</i> <i>Peak (C): 91.8 dBC</i> (19Jul2006 23:41:10)	<i>Leq (Lin): 73.1 dB</i> <i>SEL (Lin): 102.9 dB</i> <i>Peak (Lin): 92.8 dB</i> (19Jul2006 23:30:04)
--	---	--

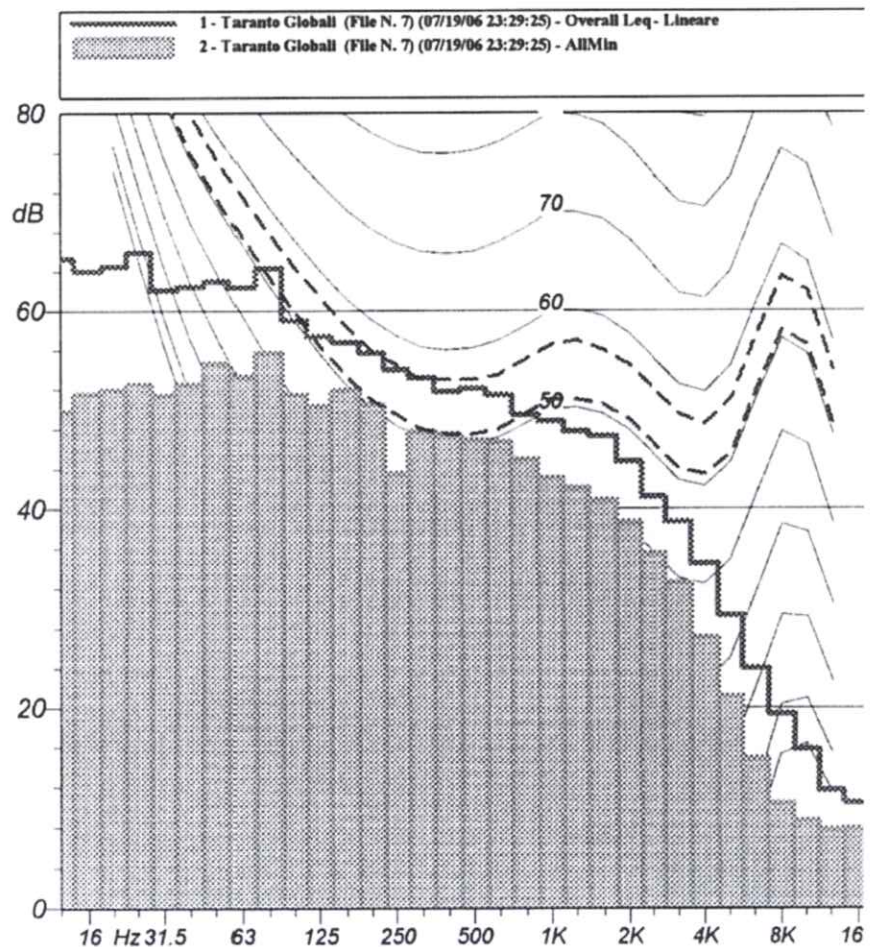
	<i>Lmin (A)</i>	<i>Lmax (A)</i>	<i>Lmin (C)</i>	<i>Lmax (C)</i>	<i>Lmin (Lin)</i>	<i>Lmax (Lin)</i>
S	56.0 <small>19Jul2006 23:30:49</small>	70.7 <small>19Jul2006 23:41:10</small>	69.1 <small>19Jul2006 23:41:01</small>	80.4 <small>19Jul2006 23:31:10</small>	70.8 <small>19Jul2006 23:41:01</small>	81.0 <small>19Jul2006 23:31:10</small>
F	55.7 <small>19Jul2006 23:30:47</small>	72.0 <small>19Jul2006 23:41:10</small>	67.6 <small>19Jul2006 23:40:06</small>	83.5 <small>19Jul2006 23:31:10</small>	69.0 <small>19Jul2006 23:34:10</small>	84.7 <small>19Jul2006 23:30:04</small>
I	56.0 <small>19Jul2006 23:32:36</small>	72.3 <small>19Jul2006 23:41:09</small>	69.6 <small>19Jul2006 23:42:19</small>	84.9 <small>19Jul2006 23:31:10</small>	71.4 <small>19Jul2006 23:34:10</small>	87.3 <small>19Jul2006 23:30:04</small>

Livello Equivalente

Hz	dB
12.5 Hz	65.3 dB
16 Hz	64.0 dB
20 Hz	64.5 dB
25 Hz	65.9 dB
31.5 Hz	62.1 dB
40 Hz	62.5 dB
50 Hz	63.0 dB
63 Hz	62.4 dB
80 Hz	64.3 dB
100 Hz	59.0 dB
125 Hz	57.4 dB
160 Hz	56.8 dB
200 Hz	55.7 dB
250 Hz	54.0 dB
315 Hz	53.2 dB
400 Hz	51.8 dB
500 Hz	52.1 dB
630 Hz	51.4 dB
800 Hz	49.5 dB
1000 Hz	48.8 dB
1250 Hz	47.8 dB
1600 Hz	47.3 dB
2000 Hz	44.7 dB
2500 Hz	41.2 dB
3150 Hz	38.7 dB
4000 Hz	34.5 dB
5000 Hz	29.3 dB
6300 Hz	24.0 dB
8000 Hz	19.4 dB
10000 Hz	15.8 dB
12500 Hz	11.7 dB
16000 Hz	10.5 dB
20000 Hz	9.3 dB

Livello Minimo

Hz	dB
12.5 Hz	49.7 dB
16 Hz	51.6 dB
20 Hz	52.0 dB
25 Hz	52.6 dB
31.5 Hz	51.4 dB
40 Hz	52.5 dB
50 Hz	54.6 dB
63 Hz	53.3 dB
80 Hz	55.7 dB
100 Hz	51.5 dB
125 Hz	50.3 dB
160 Hz	51.9 dB
200 Hz	50.5 dB
250 Hz	43.6 dB
315 Hz	47.8 dB
400 Hz	47.5 dB
500 Hz	46.9 dB
630 Hz	46.7 dB
800 Hz	45.0 dB
1000 Hz	43.1 dB
1250 Hz	42.1 dB
1600 Hz	40.9 dB
2000 Hz	38.7 dB
2500 Hz	35.5 dB
3150 Hz	32.6 dB
4000 Hz	27.1 dB
5000 Hz	21.2 dB
6300 Hz	14.9 dB
8000 Hz	10.4 dB
10000 Hz	8.7 dB
12500 Hz	7.8 dB
16000 Hz	7.9 dB
20000 Hz	7.7 dB



Nome misura : Taranto Globali (File N. 10) (07/20/06 00:41:07)

Data, ora misura : 20/07/2006 0.41.07

Durata Misura : 909.1 s

Località: Taranto

Punto di Misura : B3-N2

L1.0: 65.0 dB(A) fast
 L10.0: 60.2 dB(A) fast
 L50.0: 58.0 dB(A) fast
 L90.0: 56.5 dB(A) fast
 L95.0: 56.2 dB(A) fast
 L99.0: N/A dB(A) fast

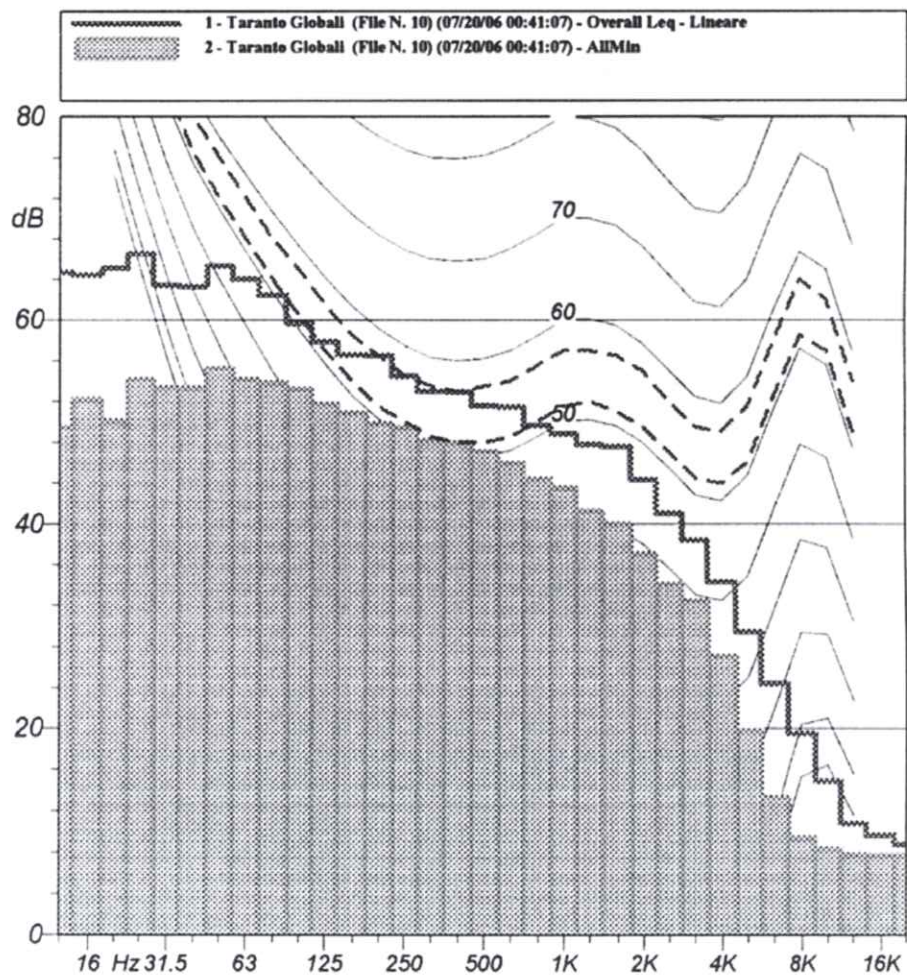
Leq (A) : 58.8 dBA

Leq (A): 58.8 dBA SEL (A): 88.4 dBA Peak (A): 80.5 dBA (20Jul2006 00:42:54)	Leq (C): 71.8 dBC SEL (C): 101.4 dBC Peak (C): 92.2 dBC (20Jul2006 00:53:47)	Leq (Lin): 73.7 dB SEL (Lin): 103.3 dB Peak (Lin): 92.4 dB (20Jul2006 00:53:47)
---	--	---

	Lmin (A)	Lmax (A)	Lmin (C)	Lmax (C)	Lmin (Lin)	Lmax (Lin)
S	55.7 20Jul2006 00:45:17	66.6 20Jul2006 00:52:59	69.7 20Jul2006 00:46:43	83.6 20Jul2006 00:53:47	71.4 20Jul2006 00:54:51	84.2 20Jul2006 00:53:47
F	55.3 20Jul2006 00:45:18	69.5 20Jul2006 00:52:58	68.1 20Jul2006 00:46:42	86.1 20Jul2006 00:53:47	69.5 20Jul2006 00:44:21	86.7 20Jul2006 00:53:47
I	55.6 20Jul2006 00:45:17	70.2 20Jul2006 00:52:58	70.3 20Jul2006 00:41:07	87.5 20Jul2006 00:53:47	72.6 20Jul2006 00:44:21	87.9 20Jul2006 00:53:47

Livello Equivalente	
Hz	dB
12.5 Hz	64.7 dB
16 Hz	64.4 dB
20 Hz	65.1 dB
25 Hz	66.5 dB
31.5 Hz	63.4 dB
40 Hz	63.3 dB
50 Hz	65.3 dB
63 Hz	64.0 dB
80 Hz	62.5 dB
100 Hz	59.6 dB
125 Hz	57.9 dB
160 Hz	56.6 dB
200 Hz	56.5 dB
250 Hz	54.5 dB
315 Hz	53.0 dB
400 Hz	52.9 dB
500 Hz	51.6 dB
630 Hz	51.4 dB
800 Hz	49.6 dB
1000 Hz	48.8 dB
1250 Hz	47.8 dB
1600 Hz	47.6 dB
2000 Hz	44.3 dB
2500 Hz	41.1 dB
3150 Hz	38.4 dB
4000 Hz	34.3 dB
5000 Hz	29.4 dB
6300 Hz	24.4 dB
8000 Hz	19.5 dB
10000 Hz	14.9 dB
12500 Hz	10.8 dB
16000 Hz	9.7 dB
20000 Hz	8.8 dB

Livello Minimo	
Hz	dB
12.5 Hz	49.4 dB
16 Hz	52.2 dB
20 Hz	50.1 dB
25 Hz	54.2 dB
31.5 Hz	53.4 dB
40 Hz	53.3 dB
50 Hz	55.3 dB
63 Hz	54.2 dB
80 Hz	53.8 dB
100 Hz	53.2 dB
125 Hz	51.8 dB
160 Hz	50.8 dB
200 Hz	49.8 dB
250 Hz	49.4 dB
315 Hz	48.1 dB
400 Hz	48.0 dB
500 Hz	47.0 dB
630 Hz	45.9 dB
800 Hz	44.4 dB
1000 Hz	43.5 dB
1250 Hz	41.3 dB
1600 Hz	40.0 dB
2000 Hz	37.1 dB
2500 Hz	34.1 dB
3150 Hz	32.4 dB
4000 Hz	27.0 dB
5000 Hz	19.8 dB
6300 Hz	13.3 dB
8000 Hz	9.4 dB
10000 Hz	8.3 dB
12500 Hz	7.8 dB
16000 Hz	7.7 dB
20000 Hz	7.7 dB



Riprese Fotografiche dei Punti di Misura

Figura 5c Ubicazione Misura Fonometrica B1 (Scala 1:15.000) - 1 di 3

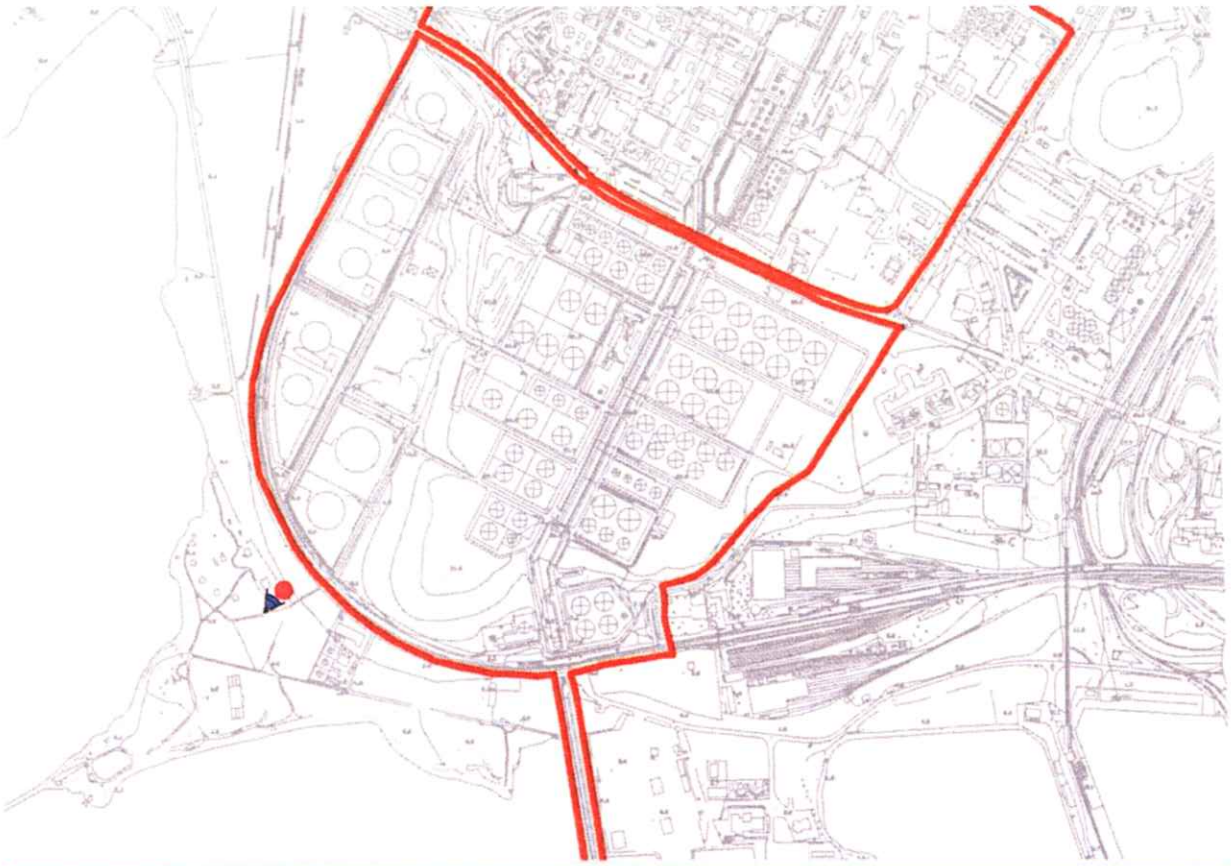


Figura 5c Ubicazione Misura Fonometrica B2 (Scala 1:15.000) - 2 di 3

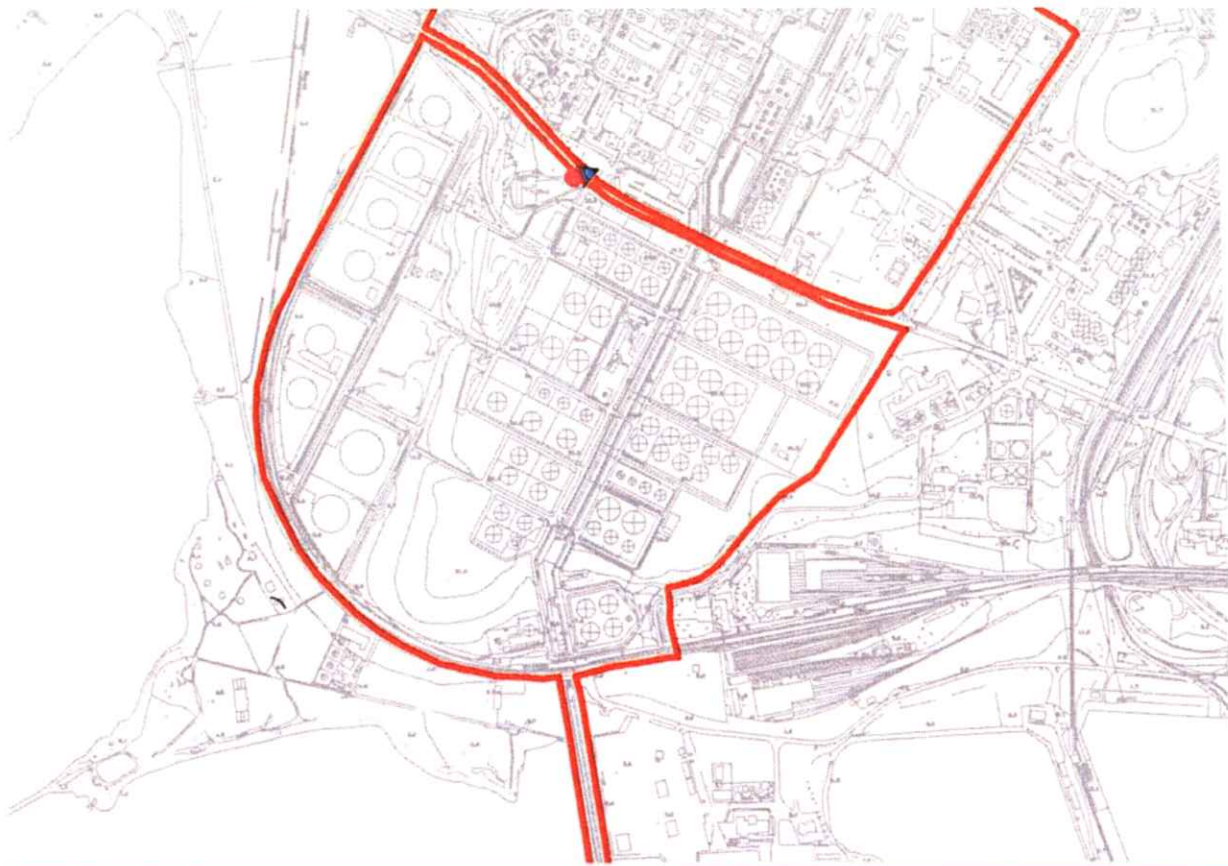


Figura 5c Ubicazione Misura Fonometrica B3 (Scala 1:15.000) 3 di 3

