



REGIONE MOLISE

Provincia di Campobasso

COMUNE DI SANTA CROCE DI MAGLIANO



OGGETTO

PROGETTO PER LA REALIZZAZIONE DI UN IMPIANTO EOLICO
NEL COMUNE DI SANTA CROCE DI MAGLIANO (CB)

COMMITTENTE

WIND ENERGY SANTACROCE SRL

PROGETTAZIONE

Codice Commessa PHEEDRA: 19_33_EO_SCR



PHEEDRA S.r.l. Via Lago di Nemi, 90
74121 - Taranto
Tel. 099.7722302 - Fax 099.9870285
e-mail: info@pheedra.it - web: www.pheedra.it

Dott. Ing. Angelo Micolucci

Dott. Archeologo Francesco Rossi



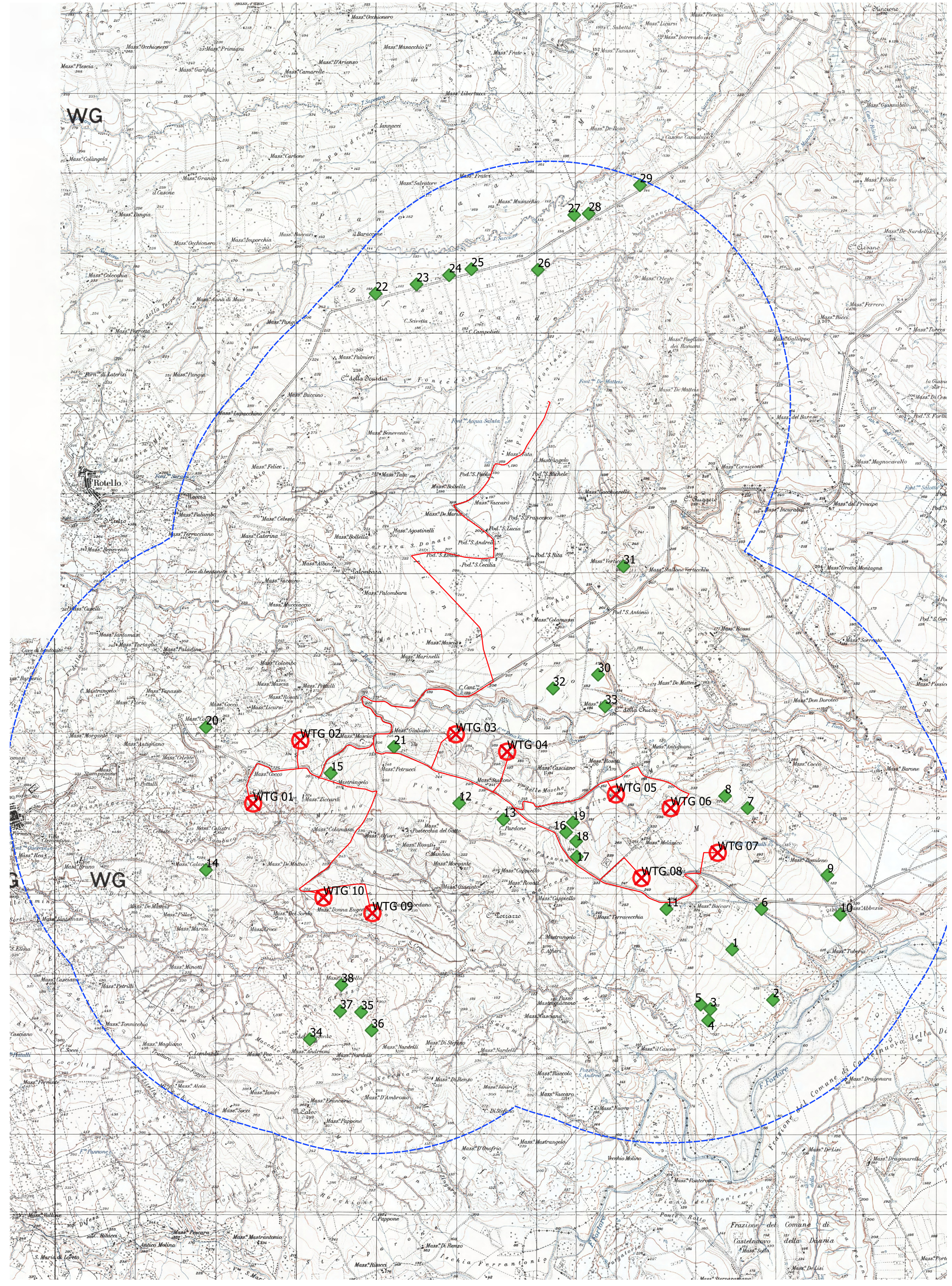
REV.	DATA	ATTIVITA'	REDATTO	VERIFICATO	APROVATO
1	Febbraio 2020	PRIMA EMISSIONE	CD	AM	VS

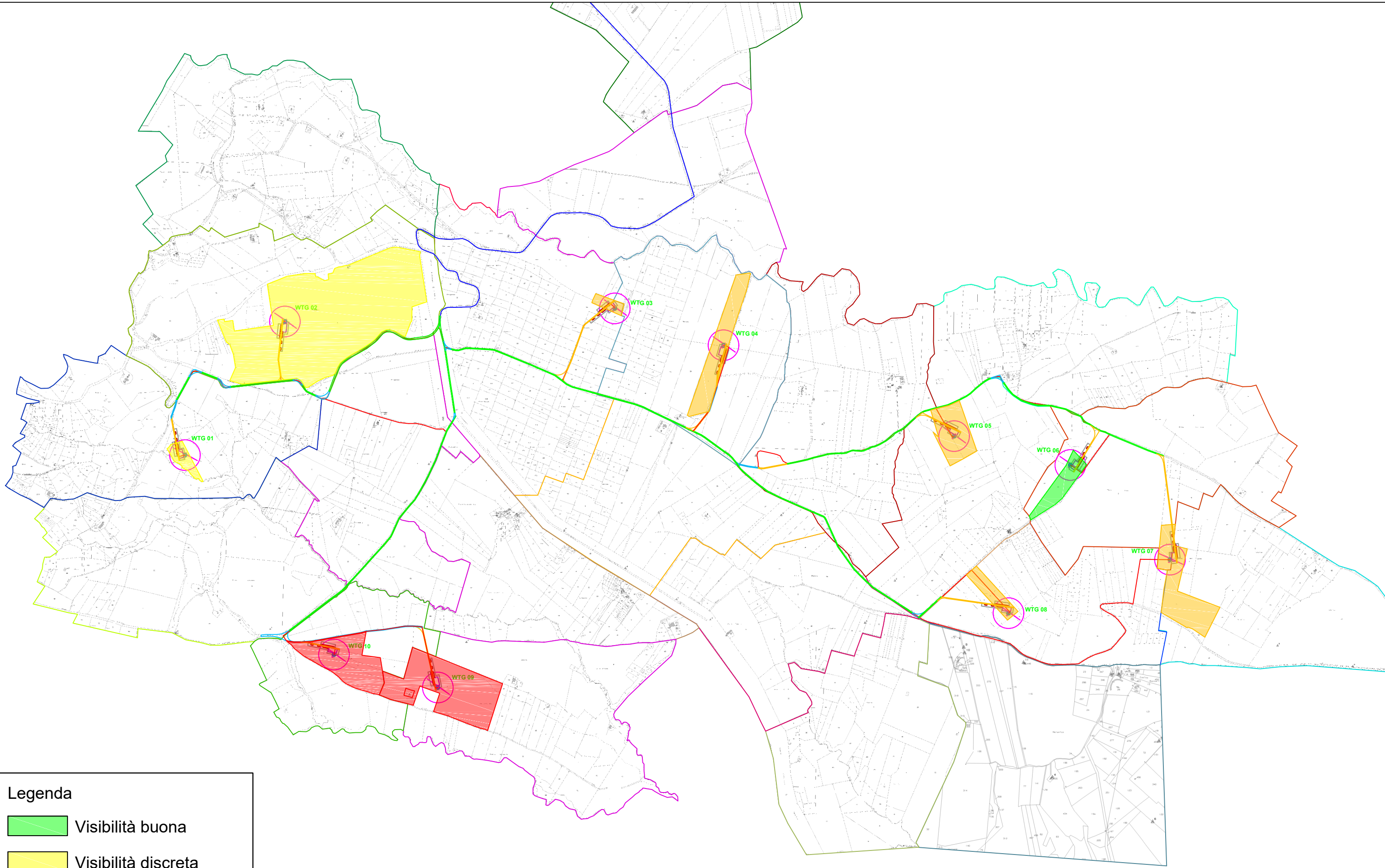
OGGETTO DELL'ELABORATO

SCHEDE DI STUDIO ARCHEOLOGICO

FORMATO	SCALA	CODICE DOCUMENTO					NOME FILE	FOGLI
		SOC.	DISC.	TIPO DOC.	PROG.	REV.		
A4	-	SCR	AMB	REL	036	01	SCR-AMB-REL-036_01	

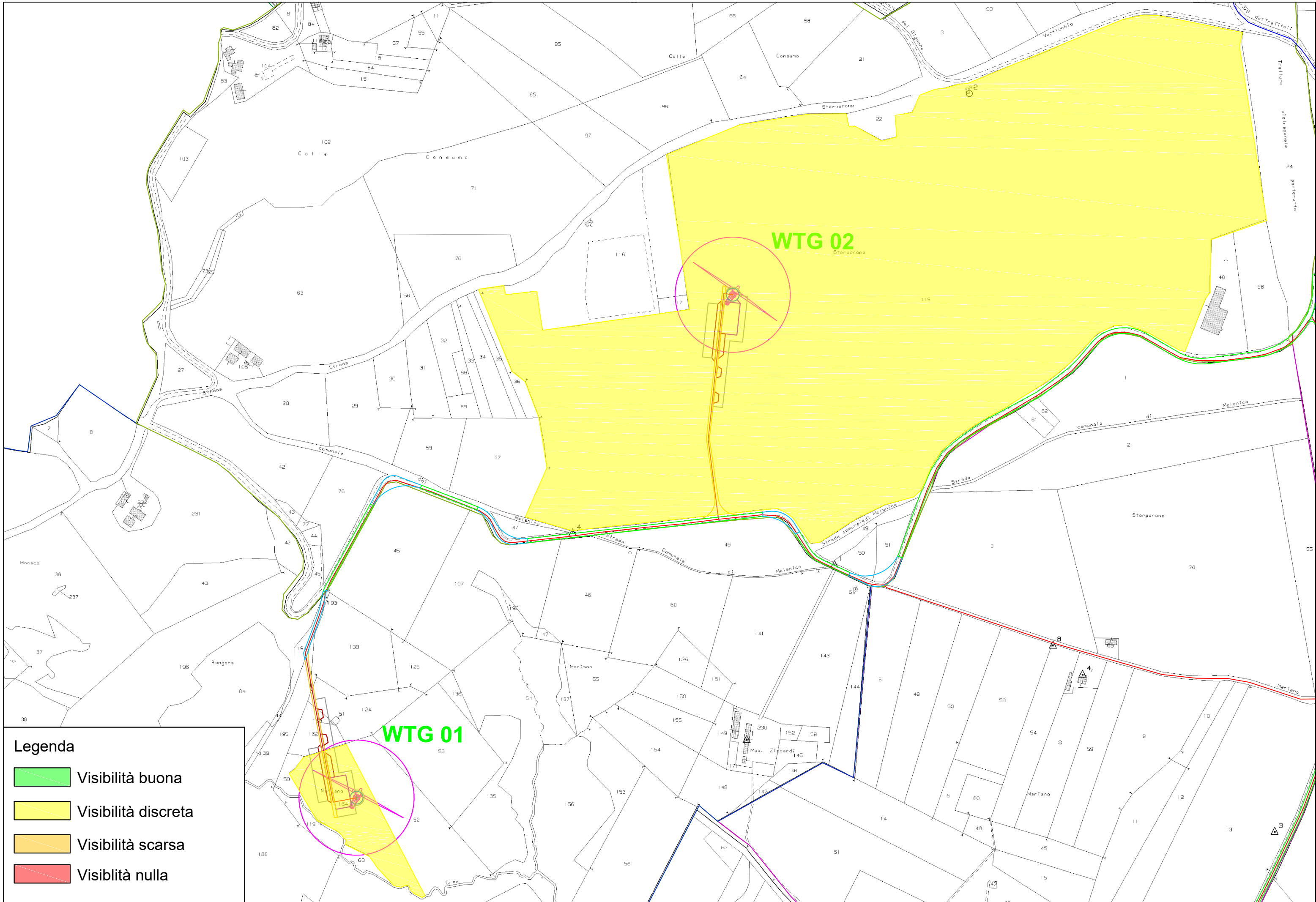
CARTA DEI SITI ARCHEOLOGICI - TAV.01





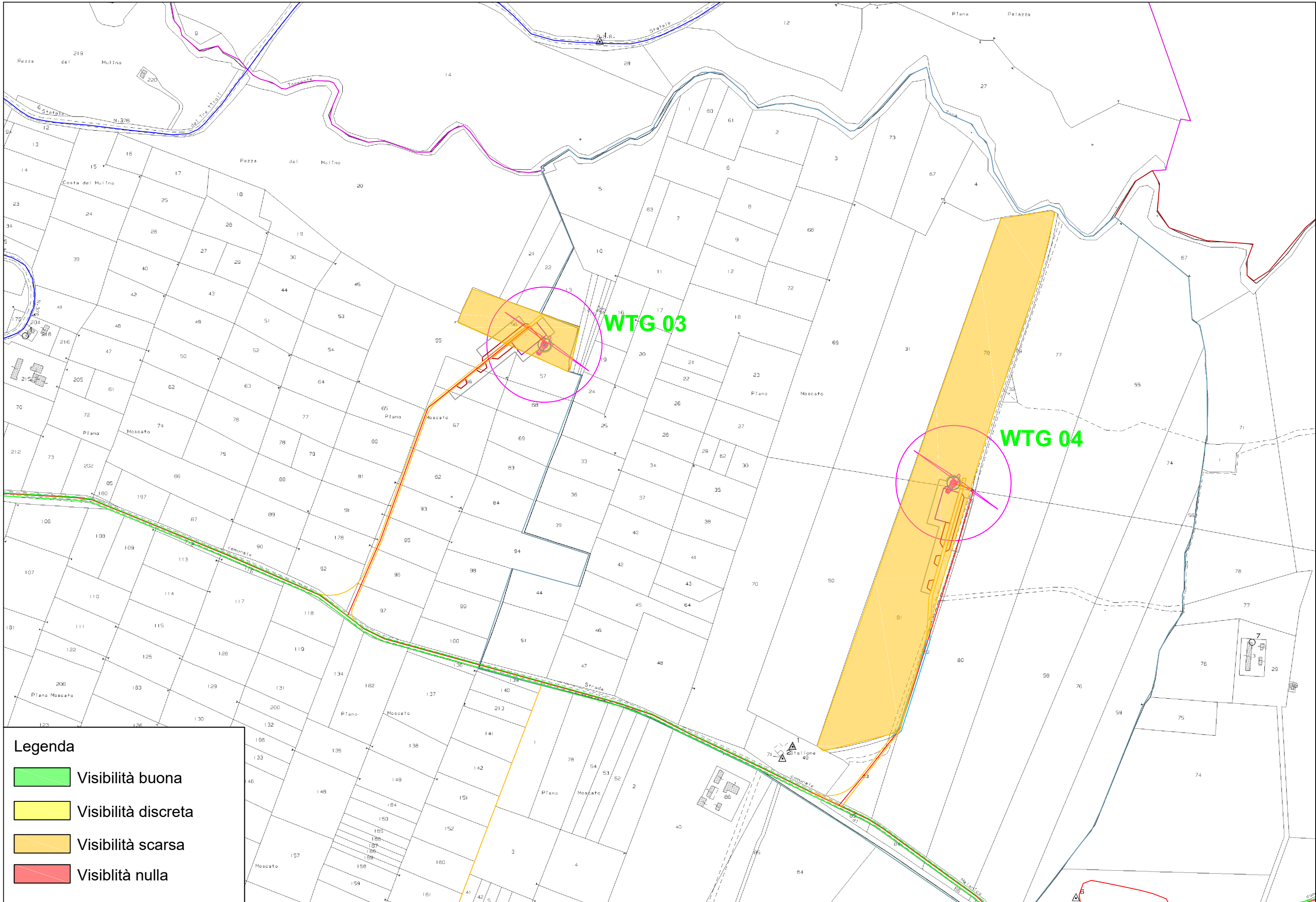
Legenda

- Visibilità buona
- Visibilità discreta
- Visibilità scarsa
- Visibilità nulla



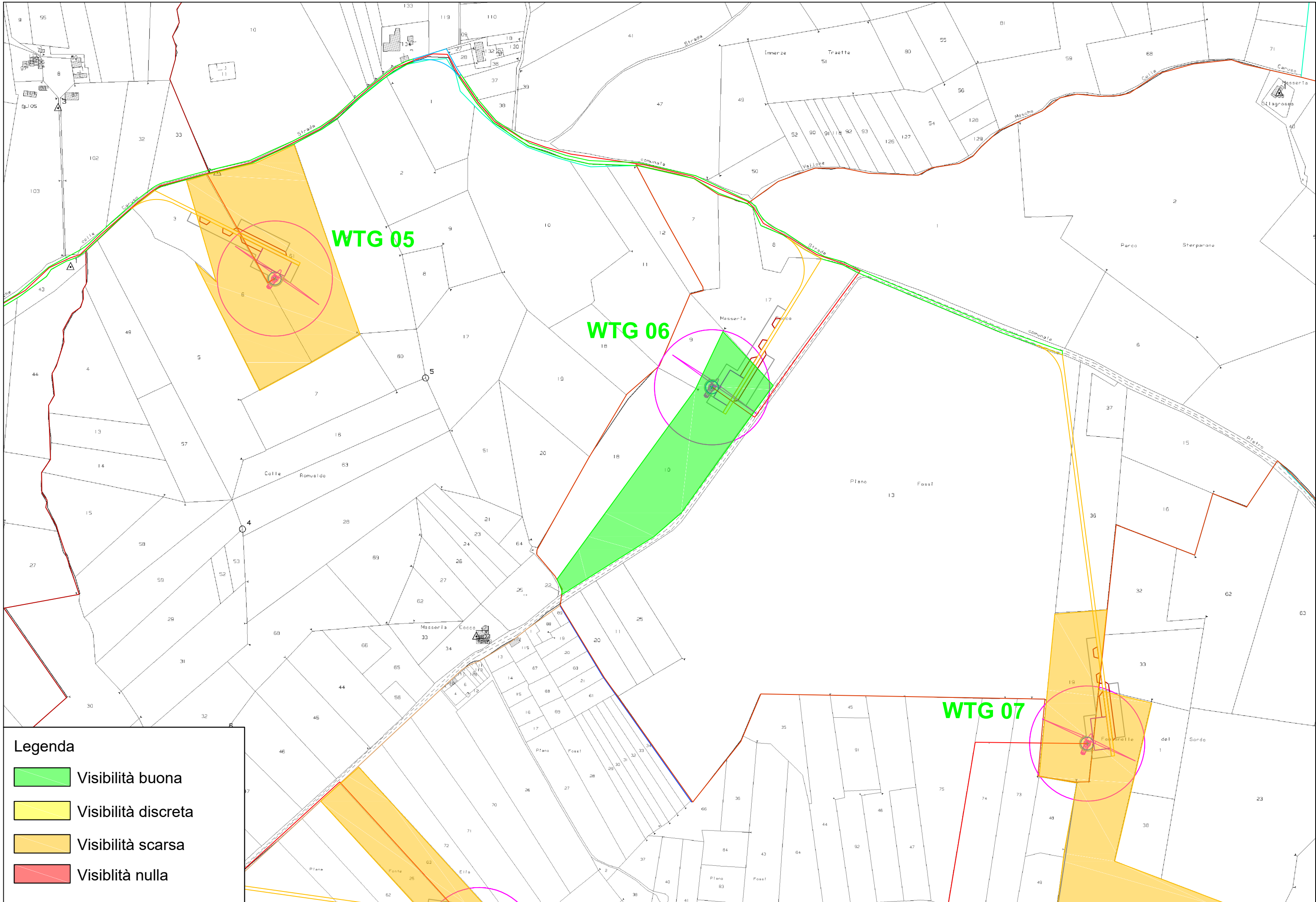
Legenda

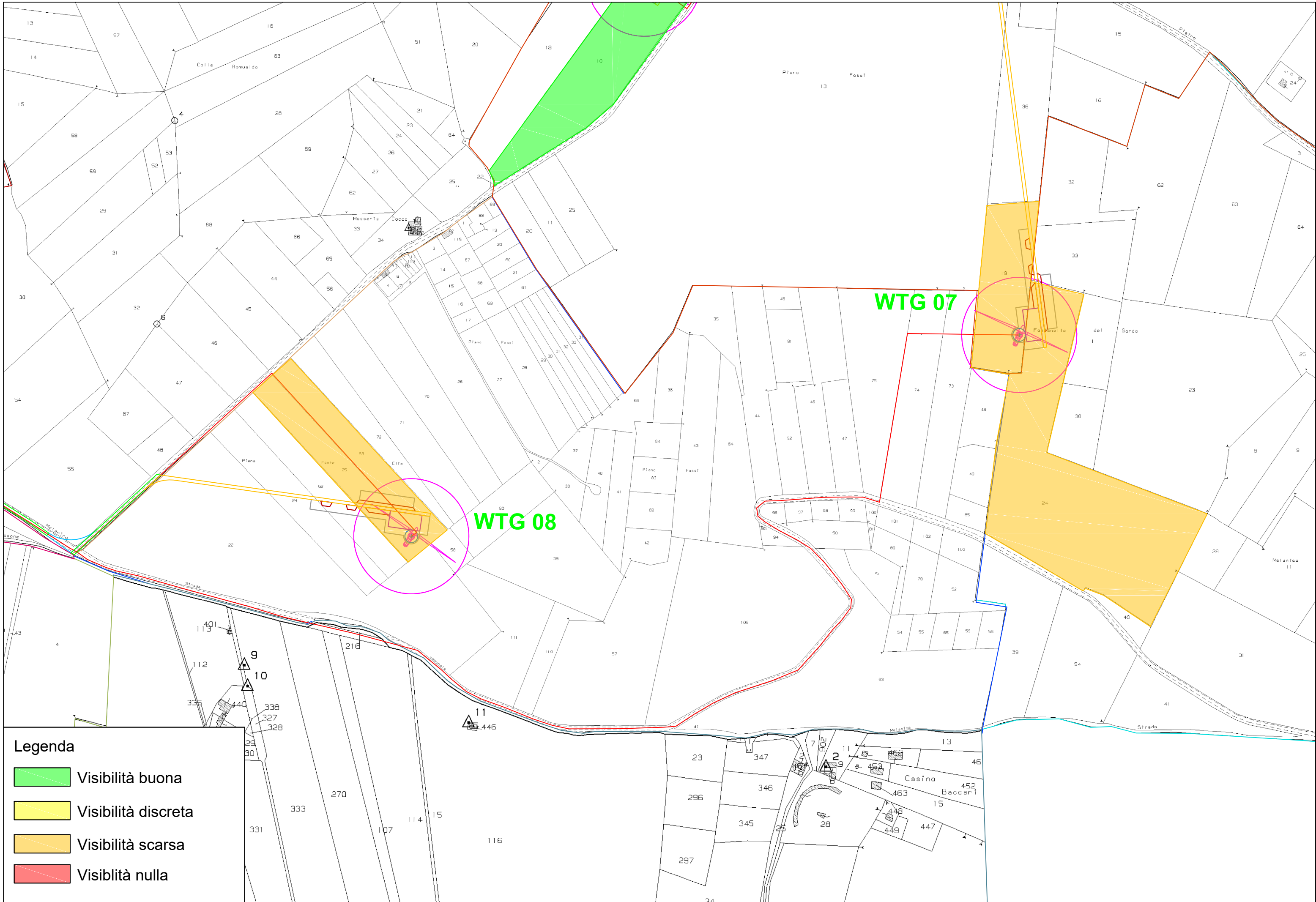
- Visibilità buona
- Visibilità discreta
- Visibilità scarsa
- Visibilità nulla



Legenda

- Visibilità buona
- Visibilità discreta
- Visibilità scarsa
- Visibilità nulla





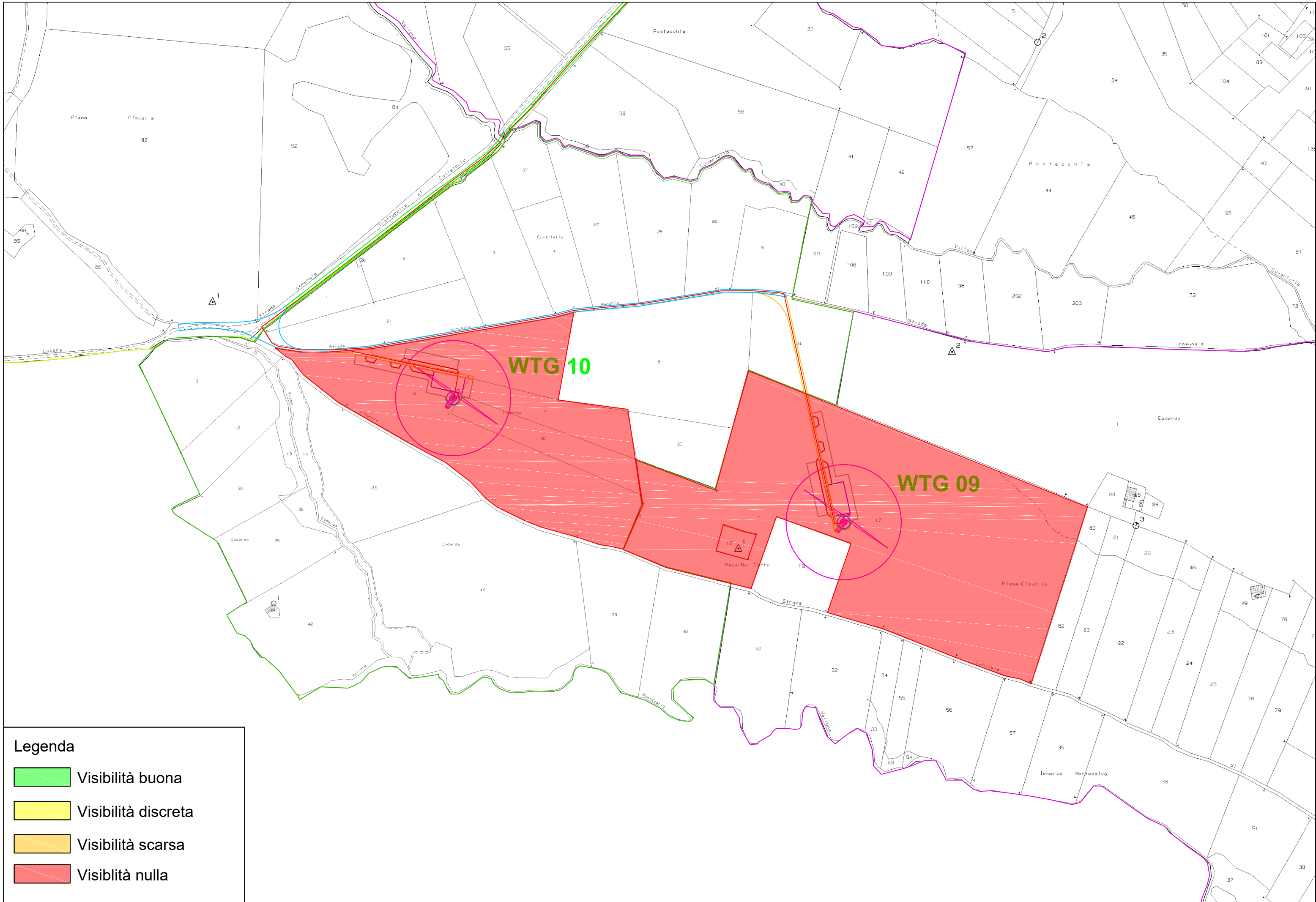
Legenda

- Visibilità buona
- Visibilità discreta
- Visibilità scarsa
- Visibilità nulla

WTG 07

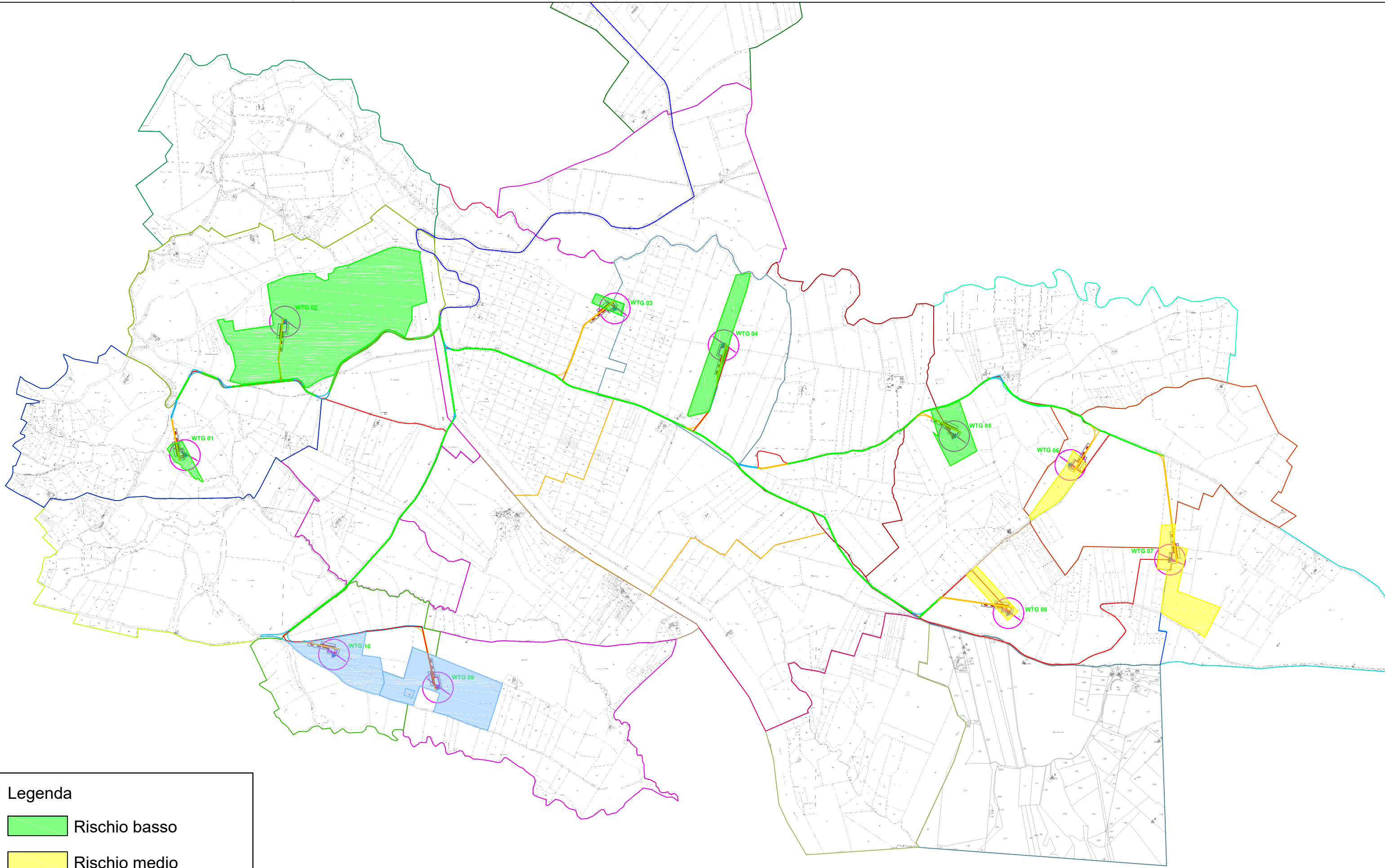
WTG 08

Map labels and parcel numbers: 13, 14, 15, 16, 18, 20, 21, 22, 23, 24, 25, 26, 27, 28, 29, 30, 31, 32, 33, 34, 35, 36, 38, 39, 40, 41, 42, 43, 44, 45, 46, 47, 48, 49, 50, 51, 52, 53, 54, 55, 56, 57, 58, 59, 60, 61, 62, 63, 64, 65, 66, 67, 68, 69, 70, 71, 72, 73, 74, 75, 76, 77, 78, 79, 80, 81, 82, 83, 84, 85, 86, 87, 88, 89, 90, 91, 92, 93, 94, 95, 96, 97, 98, 99, 100, 101, 102, 103, 104, 105, 106, 107, 108, 109, 110, 111, 112, 113, 114, 115, 116, 117, 118, 119, 120, 121, 122, 123, 124, 125, 126, 127, 128, 129, 130, 131, 132, 133, 134, 135, 136, 137, 138, 139, 140, 141, 142, 143, 144, 145, 146, 147, 148, 149, 150, 151, 152, 153, 154, 155, 156, 157, 158, 159, 160, 161, 162, 163, 164, 165, 166, 167, 168, 169, 170, 171, 172, 173, 174, 175, 176, 177, 178, 179, 180, 181, 182, 183, 184, 185, 186, 187, 188, 189, 190, 191, 192, 193, 194, 195, 196, 197, 198, 199, 200, 201, 202, 203, 204, 205, 206, 207, 208, 209, 210, 211, 212, 213, 214, 215, 216, 217, 218, 219, 220, 221, 222, 223, 224, 225, 226, 227, 228, 229, 230, 231, 232, 233, 234, 235, 236, 237, 238, 239, 240, 241, 242, 243, 244, 245, 246, 247, 248, 249, 250, 251, 252, 253, 254, 255, 256, 257, 258, 259, 260, 261, 262, 263, 264, 265, 266, 267, 268, 269, 270, 271, 272, 273, 274, 275, 276, 277, 278, 279, 280, 281, 282, 283, 284, 285, 286, 287, 288, 289, 290, 291, 292, 293, 294, 295, 296, 297, 298, 299, 300, 301, 302, 303, 304, 305, 306, 307, 308, 309, 310, 311, 312, 313, 314, 315, 316, 317, 318, 319, 320, 321, 322, 323, 324, 325, 326, 327, 328, 329, 330, 331, 332, 333, 334, 335, 336, 337, 338, 339, 340, 341, 342, 343, 344, 345, 346, 347, 348, 349, 350, 351, 352, 353, 354, 355, 356, 357, 358, 359, 360, 361, 362, 363, 364, 365, 366, 367, 368, 369, 370, 371, 372, 373, 374, 375, 376, 377, 378, 379, 380, 381, 382, 383, 384, 385, 386, 387, 388, 389, 390, 391, 392, 393, 394, 395, 396, 397, 398, 399, 400, 401, 402, 403, 404, 405, 406, 407, 408, 409, 410, 411, 412, 413, 414, 415, 416, 417, 418, 419, 420, 421, 422, 423, 424, 425, 426, 427, 428, 429, 430, 431, 432, 433, 434, 435, 436, 437, 438, 439, 440, 441, 442, 443, 444, 445, 446, 447, 448, 449, 450, 451, 452, 453, 454, 455, 456, 457, 458, 459, 460, 461, 462, 463, 464, 465, 466, 467, 468, 469, 470, 471, 472, 473, 474, 475, 476, 477, 478, 479, 480, 481, 482, 483, 484, 485, 486, 487, 488, 489, 490, 491, 492, 493, 494, 495, 496, 497, 498, 499, 500.


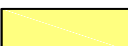




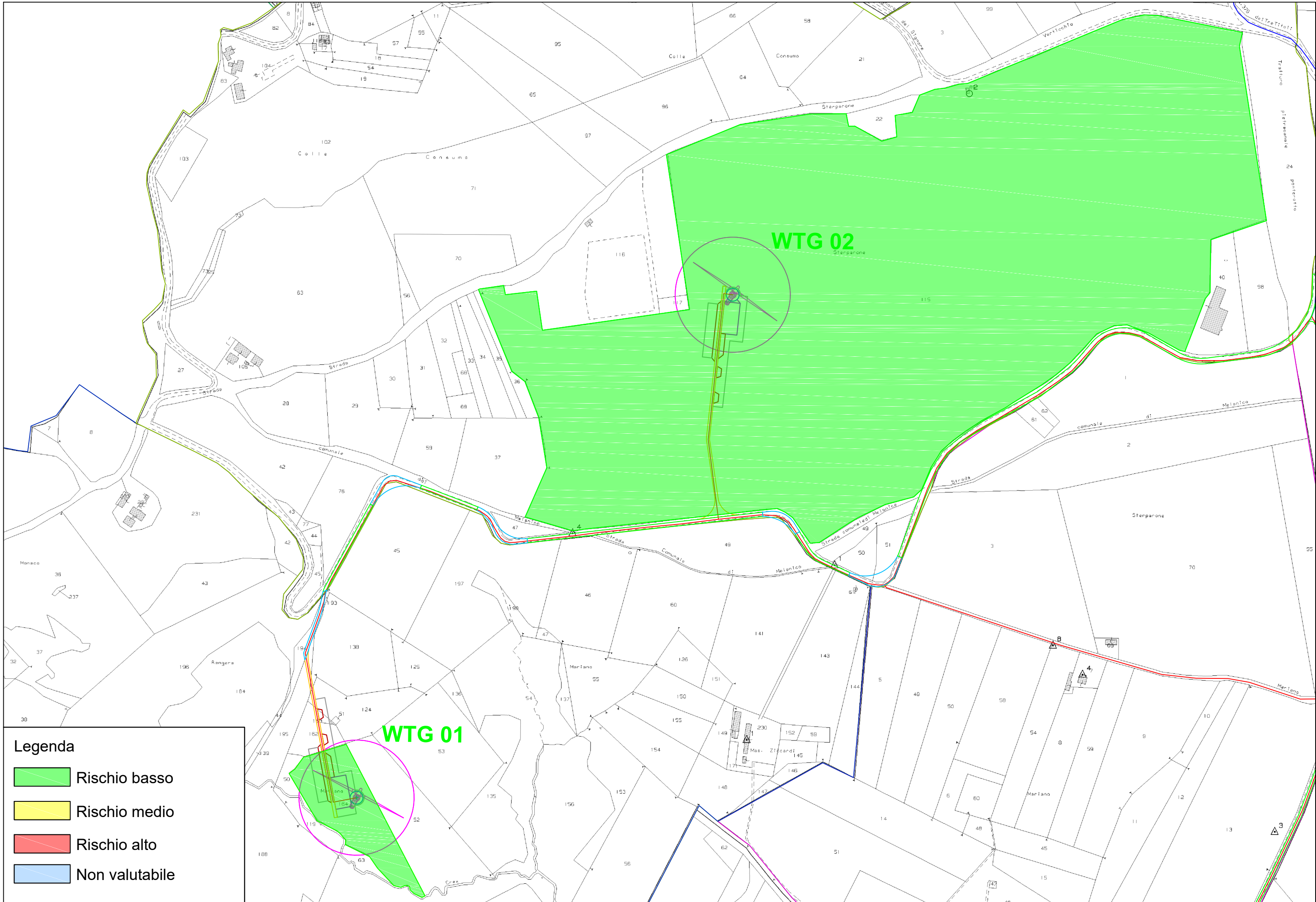
Legenda

- Visibilità buona
- Visibilità discreta
- Visibilità scarsa
- Visibilità nulla



Legenda

-  Rischio basso
-  Rischio medio
-  Rischio alto
-  Non valutabile



Legenda

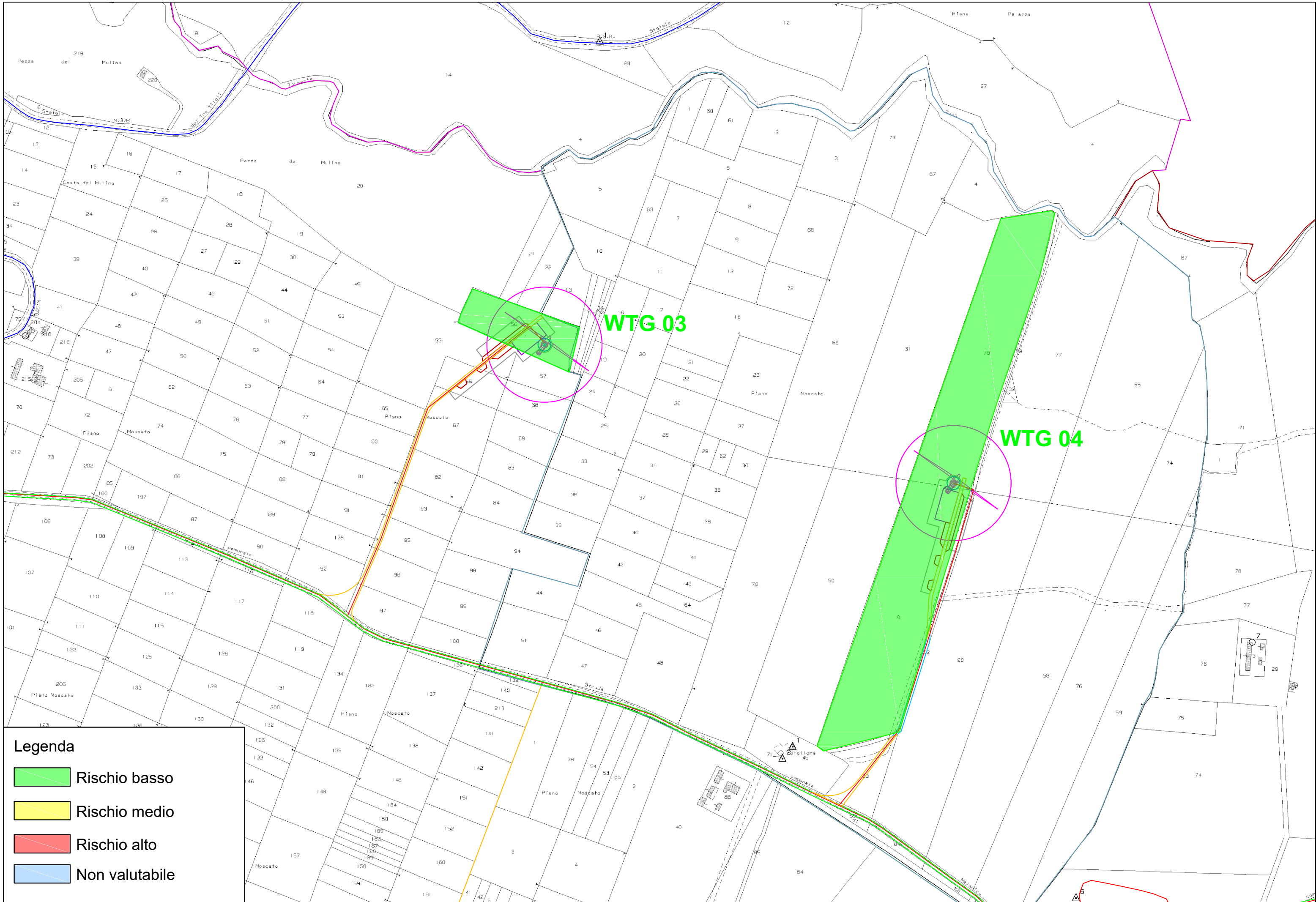
- Rischio basso
- Rischio medio
- Rischio alto
- Non valutabile

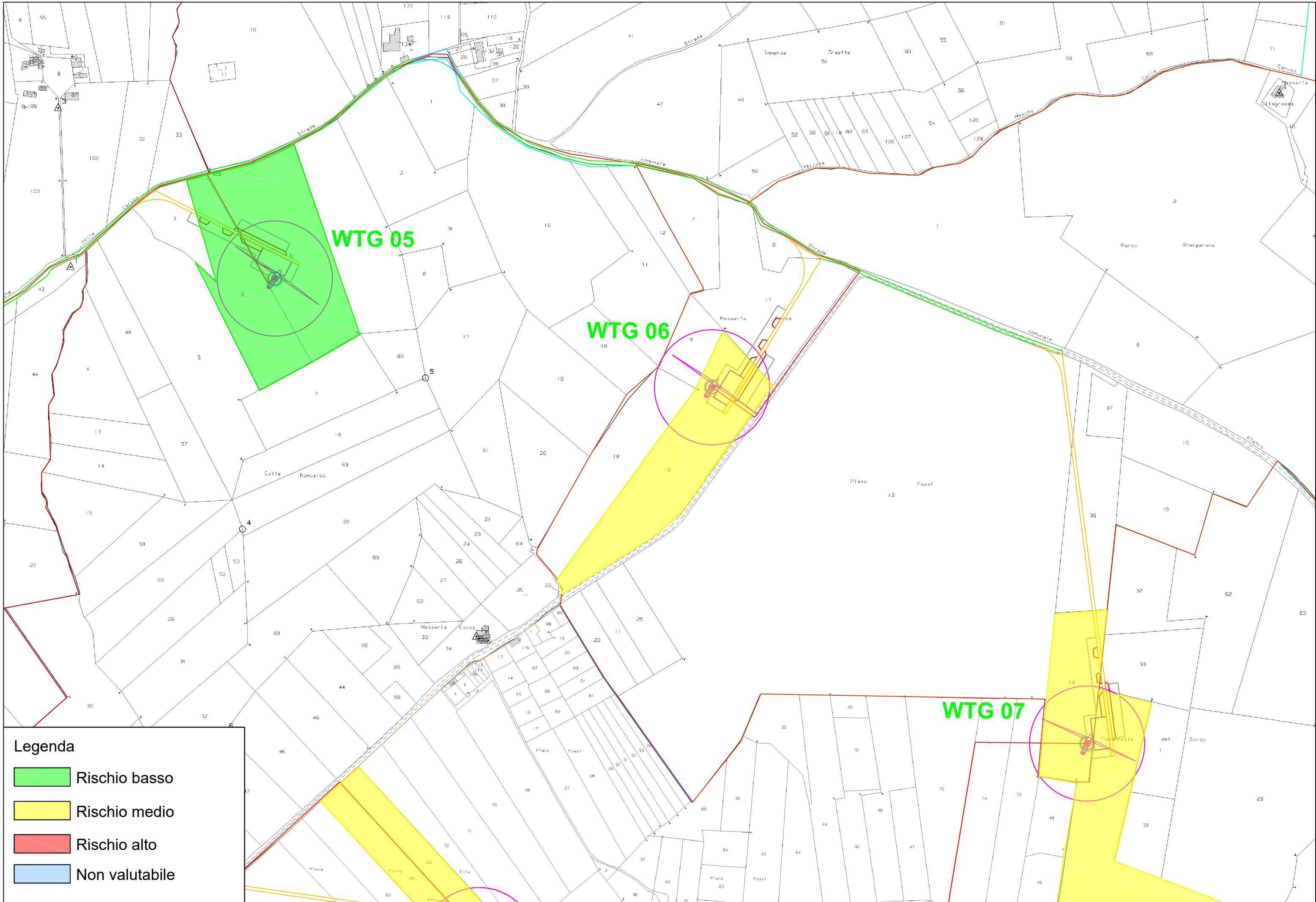
WTG 01

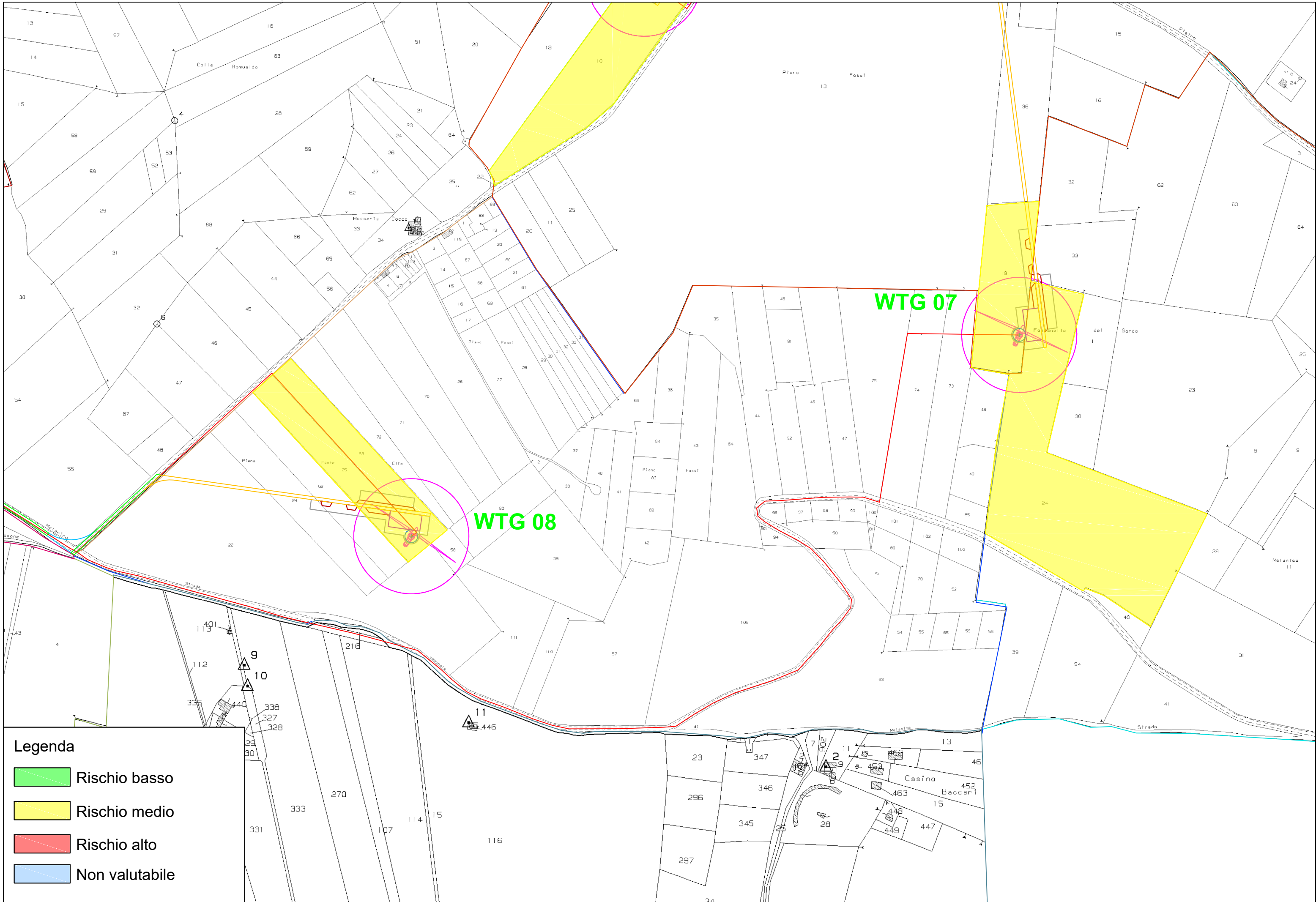
WTG 02

Map labels and features include:

- Plot Numbers:** 8, 11, 19, 21, 22, 24, 27, 28, 29, 30, 31, 32, 33, 34, 35, 36, 37, 38, 39, 40, 42, 43, 44, 45, 46, 47, 49, 50, 51, 52, 53, 54, 55, 56, 58, 59, 60, 61, 62, 63, 64, 65, 66, 68, 69, 70, 71, 76, 77, 82, 84, 88, 95, 96, 97, 98, 99, 102, 103, 104, 105, 106, 116, 117, 119, 124, 125, 126, 135, 136, 137, 141, 142, 143, 144, 145, 146, 147, 148, 149, 150, 151, 152, 153, 154, 155, 156, 162, 164, 184, 188, 196, 197, 230, 231, 237, 240, 241, 242, 243, 244, 245, 246, 247, 248, 249, 250, 251, 252, 253, 254, 255, 256, 257, 258, 259, 260, 261, 262, 263, 264, 265, 266, 267, 268, 269, 270, 271, 272, 273, 274, 275, 276, 277, 278, 279, 280, 281, 282, 283, 284, 285, 286, 287, 288, 289, 290, 291, 292, 293, 294, 295, 296, 297, 298, 299, 300.
- Roads:** Strada comunale, Strada, Strada da S. Maria, Strada di Melanico, Strada di Sterparone, Strada di Rangera, Strada di Mariano, Strada di Ziscardi, Strada di Cress.
- Geographical Features:** Colle, Consumo, Sterparone, Melanico, Rangera, Mariano, Ziscardi, Cress.
- Other Labels:** Maneco, Sterparone, Melanico, Rangera, Mariano, Ziscardi, Cress.

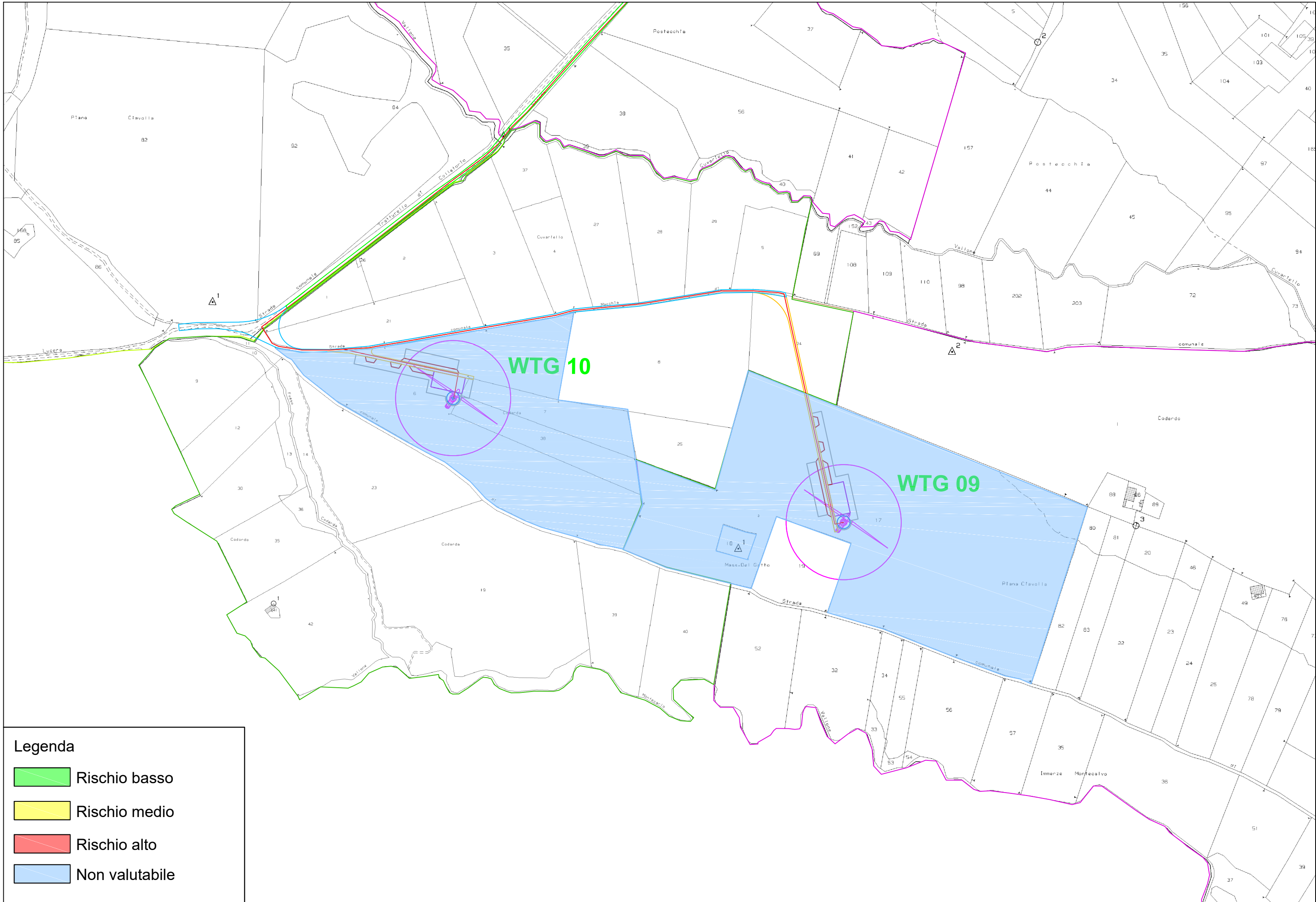






Legenda

- Rischio basso
- Rischio medio
- Rischio alto
- Non valutabile



Legenda

- Rischio basso
- Rischio medio
- Rischio alto
- Non valutabile