

IMPIANTO DI PRODUZIONE DI ENERGIA DA FONTE EOLICA
"Masseria Muro" DI POTENZA PARI A 90 MW

REGIONE PUGLIA
PROVINCIA di BRINDISI

PARCO EOLICO E RELATIVE OPERE DI CONNESSIONE NEI COMUNI DI:
Mesagne, Brindisi, San Donaci, San Pancrazio, Cellino San Marco

PROGETTO DEFINITIVO
Id AU ORE7Q71

Tav.:

Titolo:

27b

Studio Ecologico - Target di conservazione e
interferenze del progetto

Scala:

Formato Stampa:

Codice Identificatore Elaborato:

n.a.

A4

ORE7Q71_DocumentazioneSpecialistica_27b

Progettazione:

Committente:

STC S.r.l.

Via V. M. STAMPACCHIA, 48 - 73100 Lecce
Tel. +39 0832 1798355
fablo.calcarella@gmail.com - fablo.calcarella@lngpec.eu



Direttore Tecnico: Dott. Ing. Fabio CALCARELLA

Dott. Biol. Leonardo Beccarisi

Via D'Enghien, 43 - 73013 Galatna (LE)
Cell. +39 3209709895
beccarisi@gmail.com
leonardo.beccarisi@btologo.onb.it



Leonardo Beccarisi

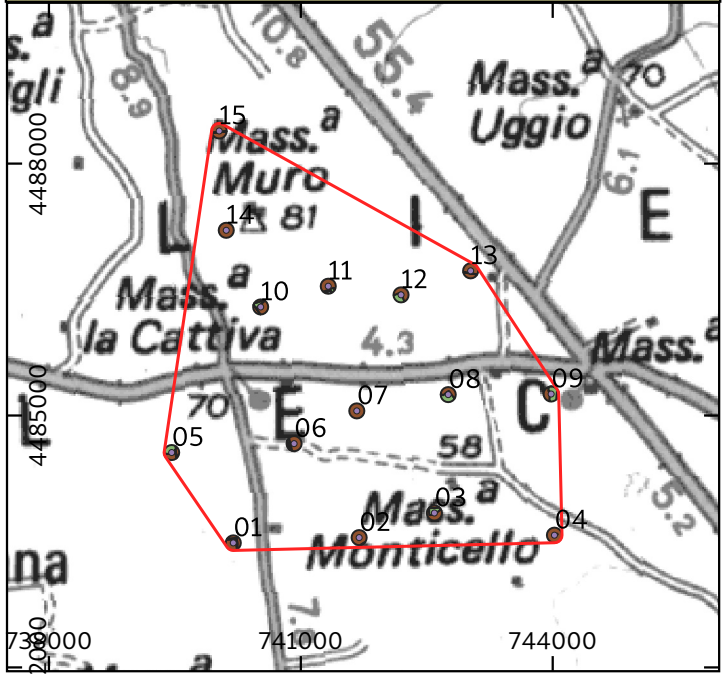
wpd MURO s.r.l.



Viale Aventino, 102 - 00153 Roma
C.F. e P.I. 15443431000
tel. +39 06 960 353-00

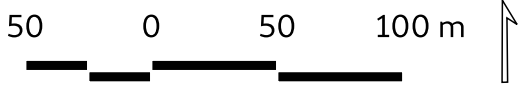
Data	Motivo della revisione:	Redatto:	Controllato:	Approvato:
Marzo 2020	Prima emissione	STC S.r.l.	FC	wpd MURO s.r.l.

Inquadramento



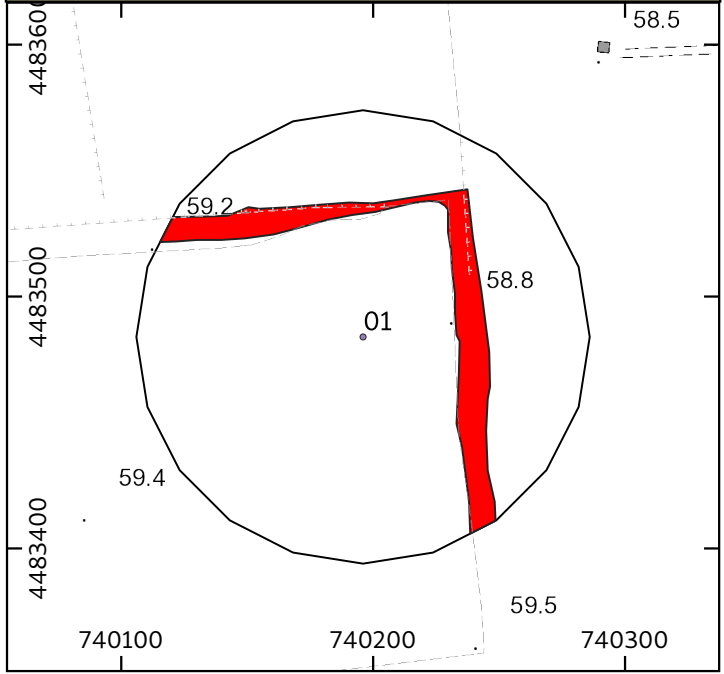
Legenda

- Posizione aerogeneratori
- Limite area di contesto
- Limite area di studio (buffer 90 m)
- Target di conservazione

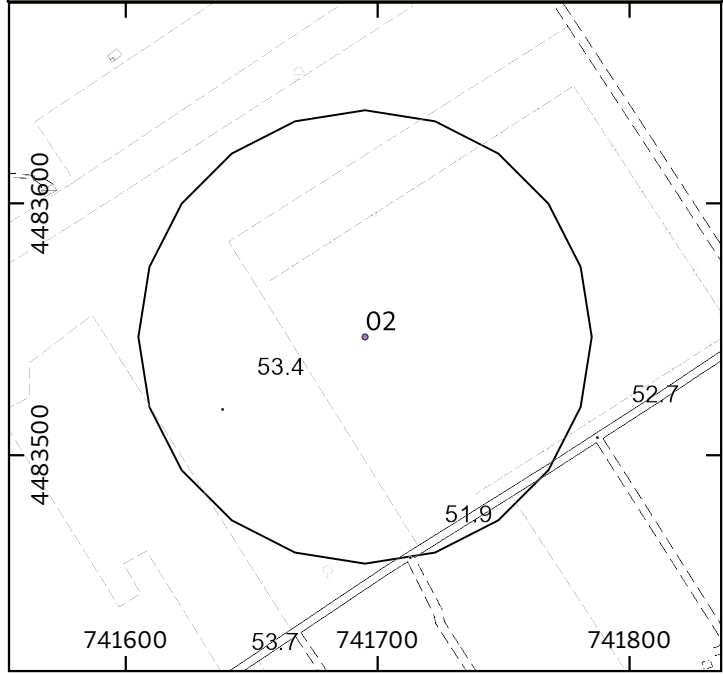


Sistema di coord.: UTM Fuso 33 WGS84.

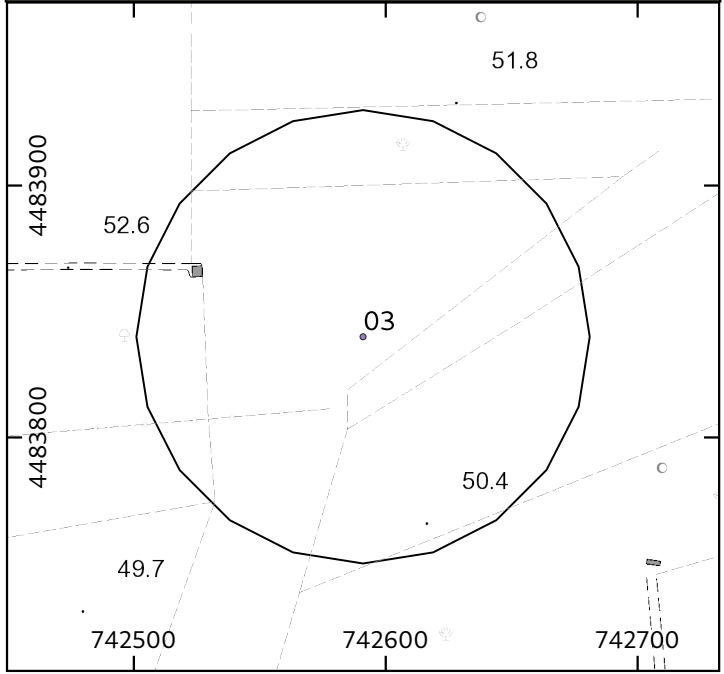
Aerogeneratore 1



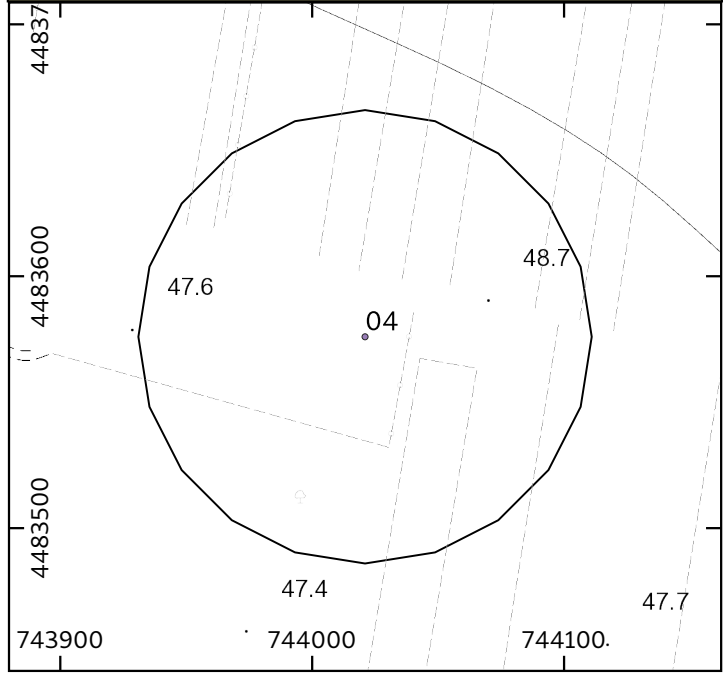
Aerogeneratore 2



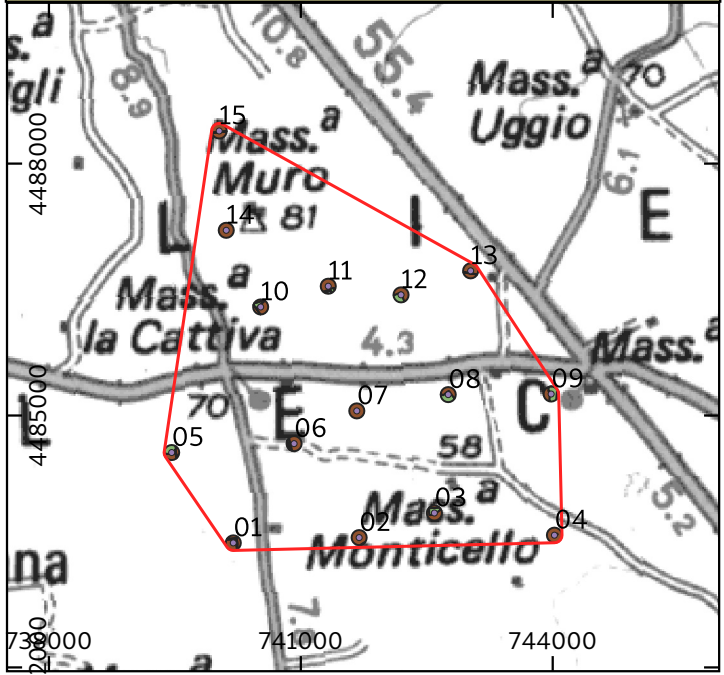
Aerogeneratore 3



Aerogeneratore 4

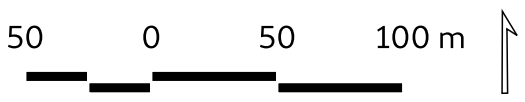


Inquadramento



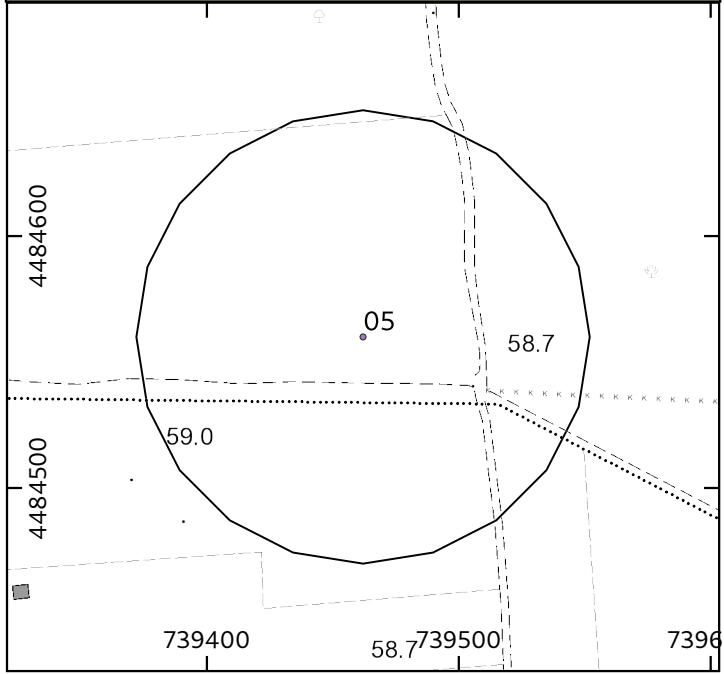
Legenda

- Posizione aerogeneratori
- Limite area di contesto
- Limite area di studio (buffer 90 m)
- Target di conservazione

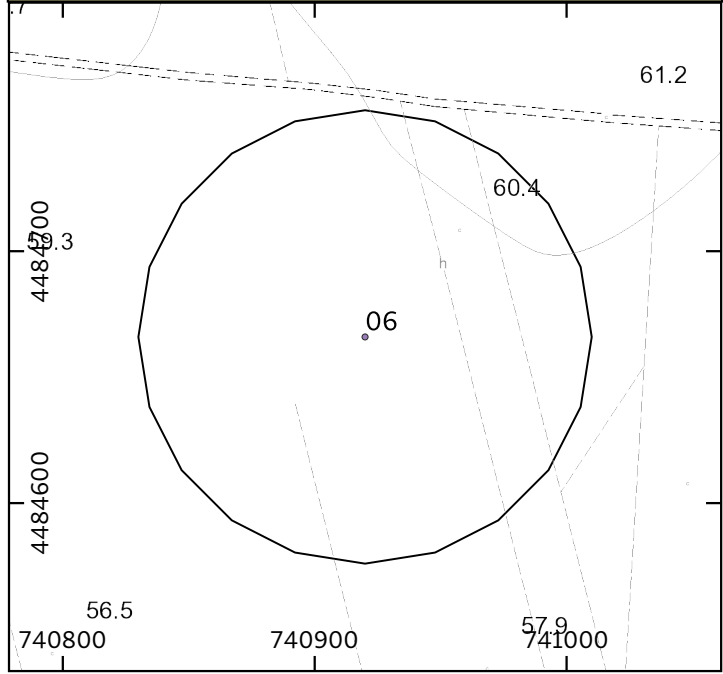


Sistema di coord.: UTM Fuso 33 WGS84.

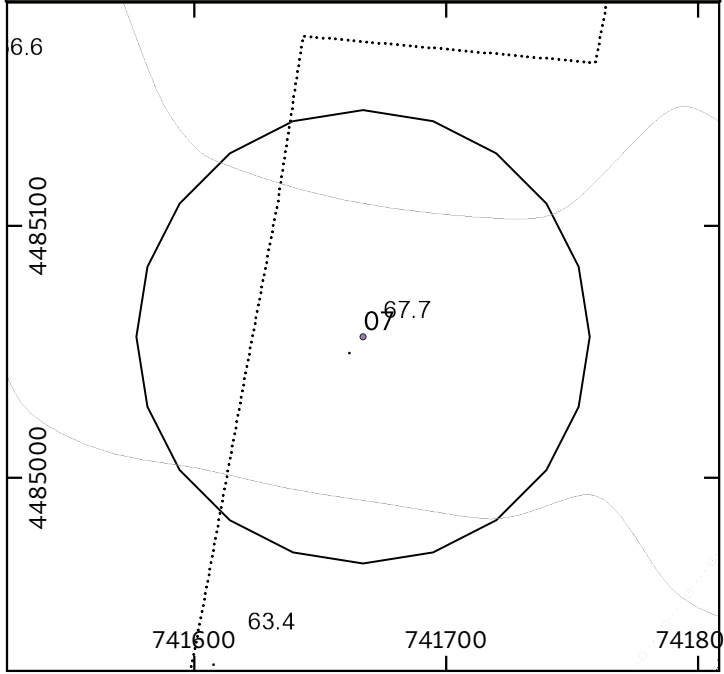
Aerogeneratore 5



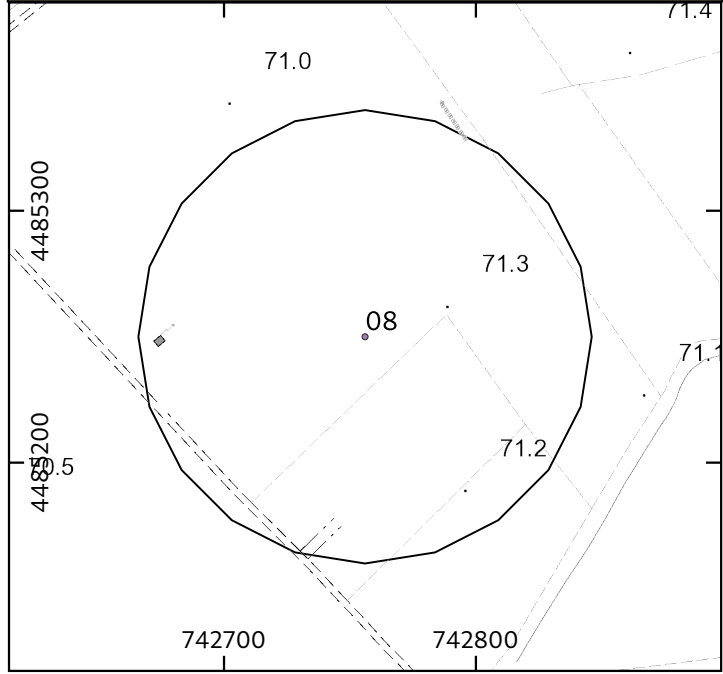
Aerogeneratore 6



Aerogeneratore 7



Aerogeneratore 8

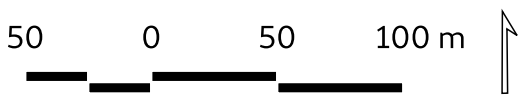


Inquadramento



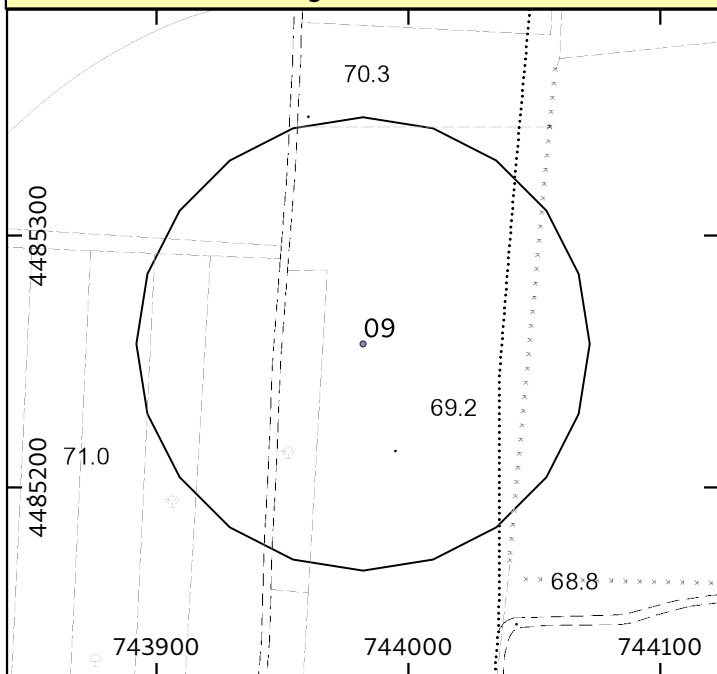
Legenda

- Posizione aerogeneratori
- Limite area di contesto
- Limite area di studio (buffer 90 m)
- Target di conservazione

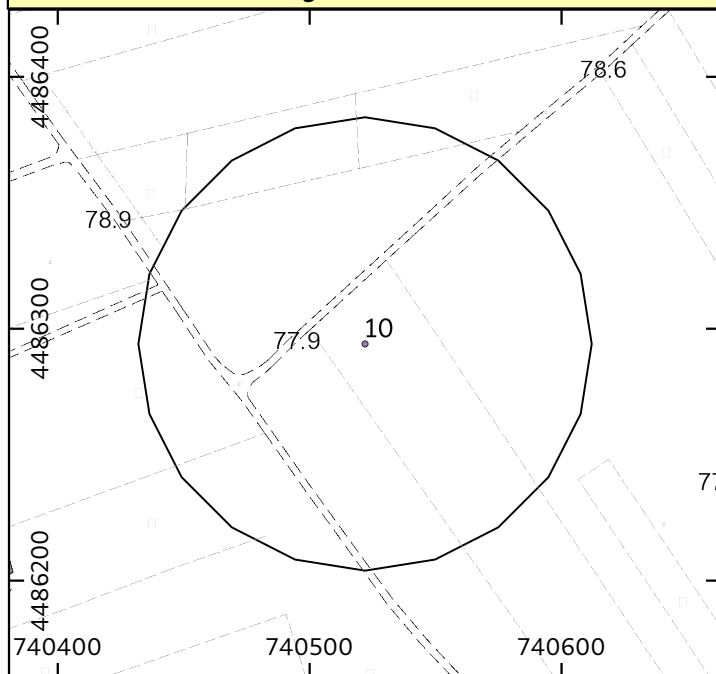


Sistema di coord.: UTM Fuso 33 WGS84.

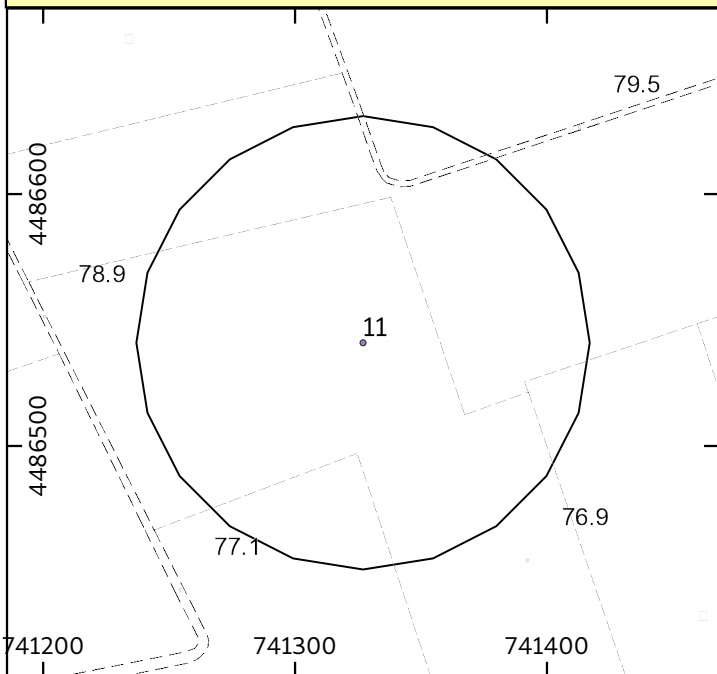
Aerogeneratore 9



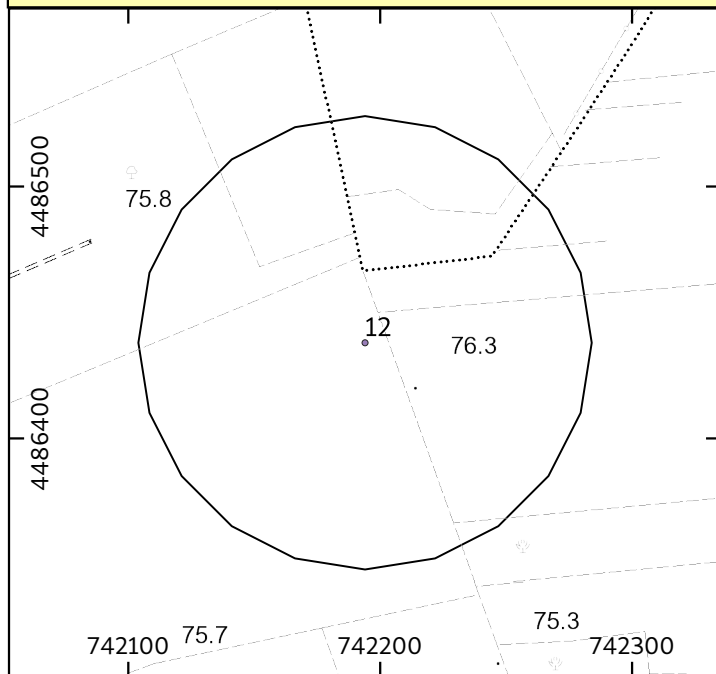
Aerogeneratore 10



Aerogeneratore 11



Aerogeneratore 12

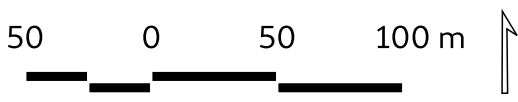


Inquadramento



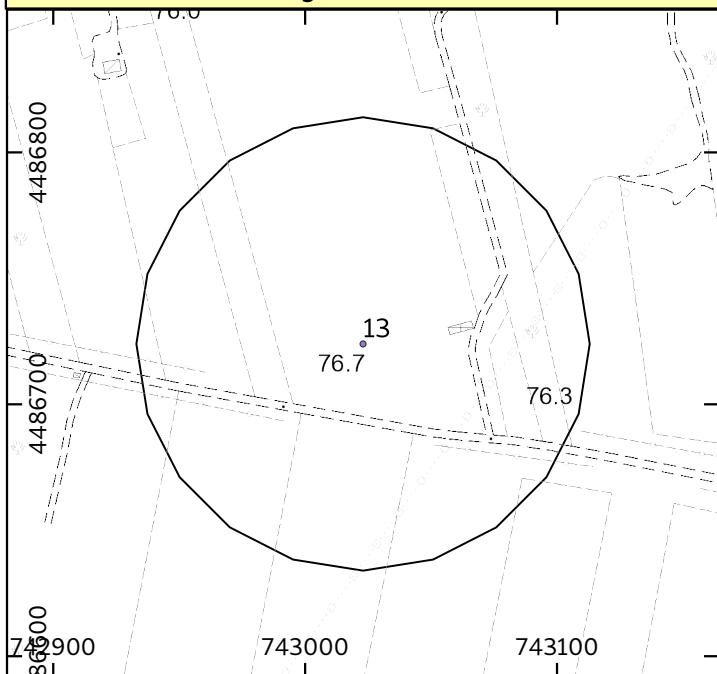
Legenda

- Posizione aerogeneratori
- Limite area di contesto
- Limite area di studio (buffer 90 m)
- Target di conservazione

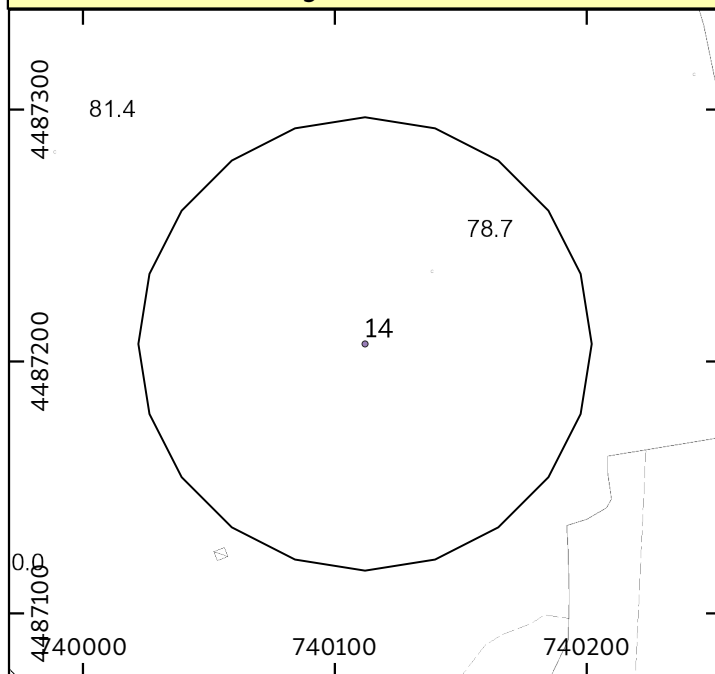


Sistema di coord.: UTM Fuso 33 WGS84.

Aerogeneratore 13



Aerogeneratore 14



Aerogeneratore 15

