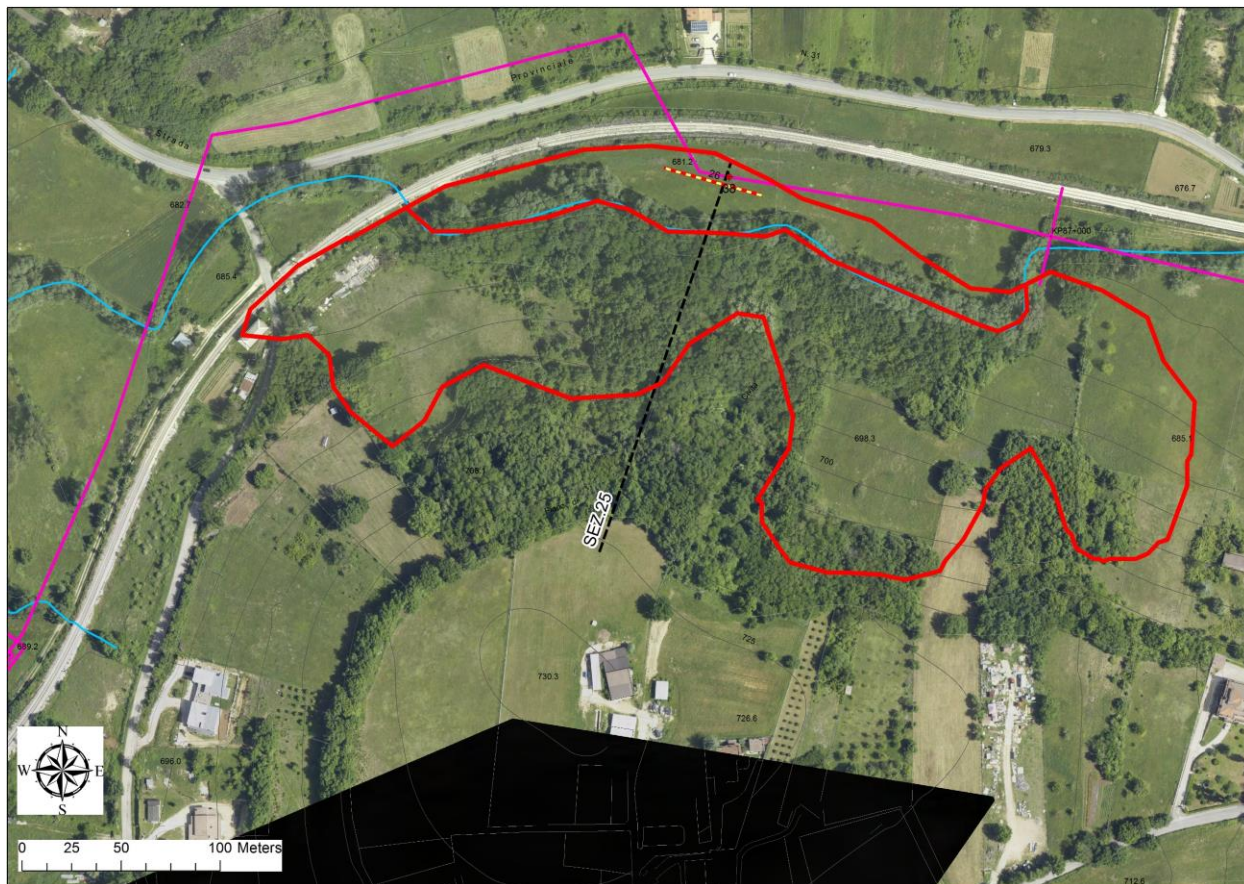
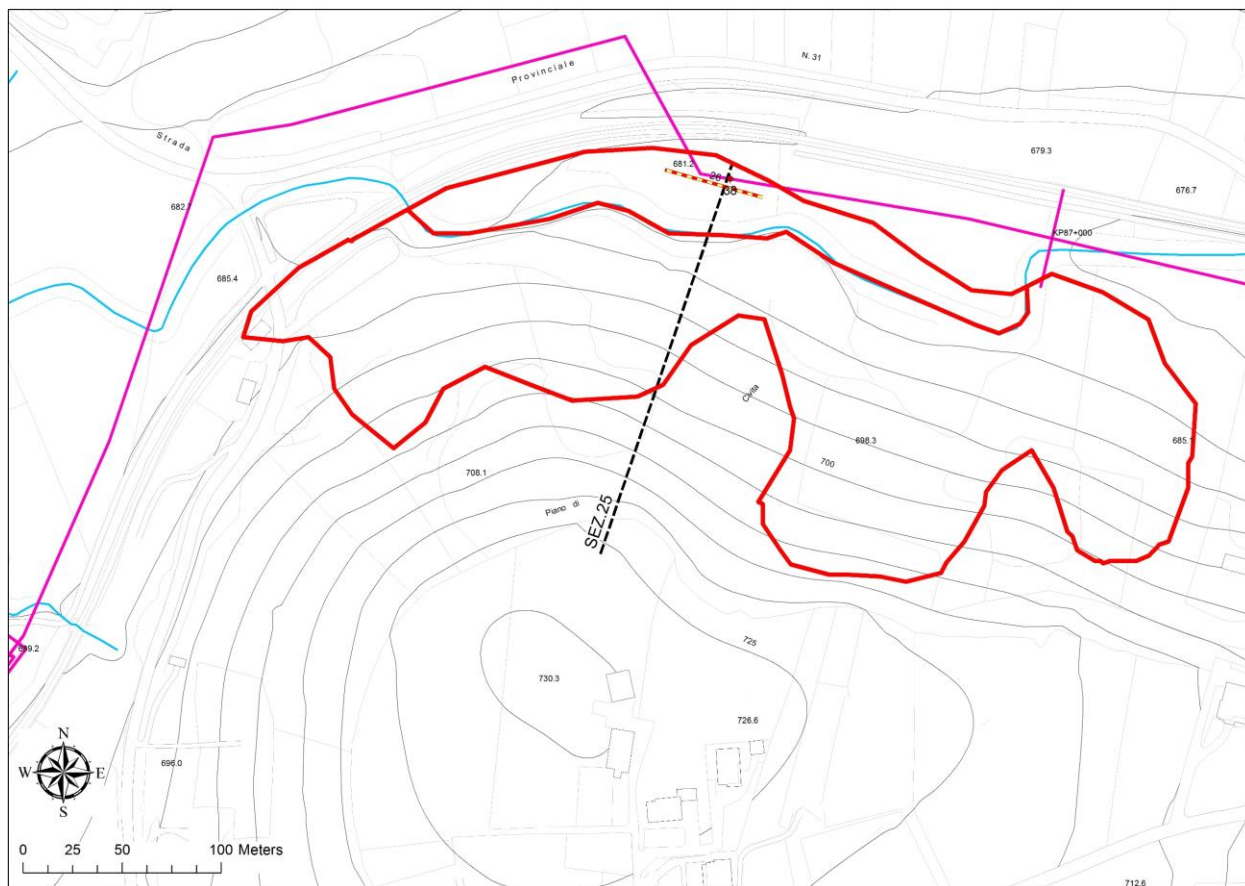


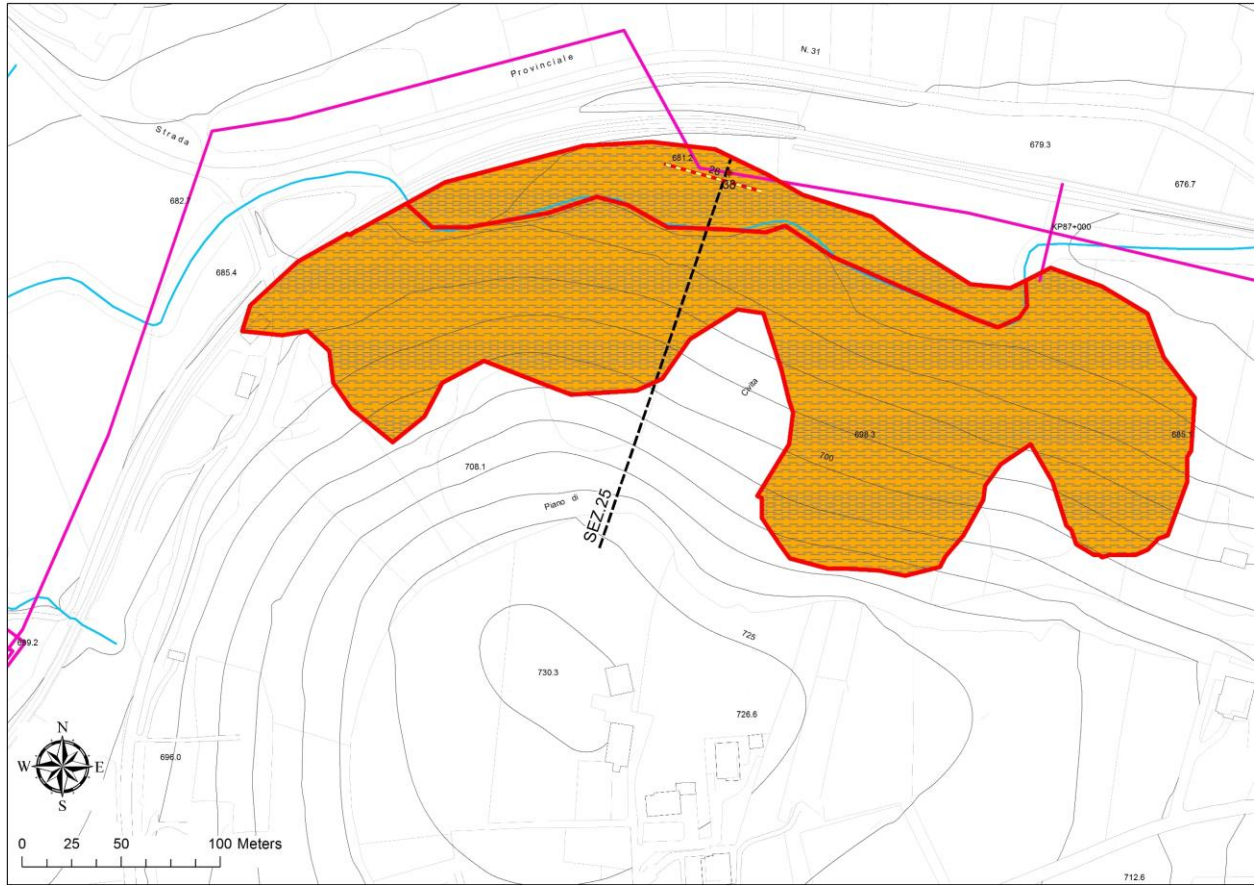
BASE ORTO_LIMITE FRANA_25

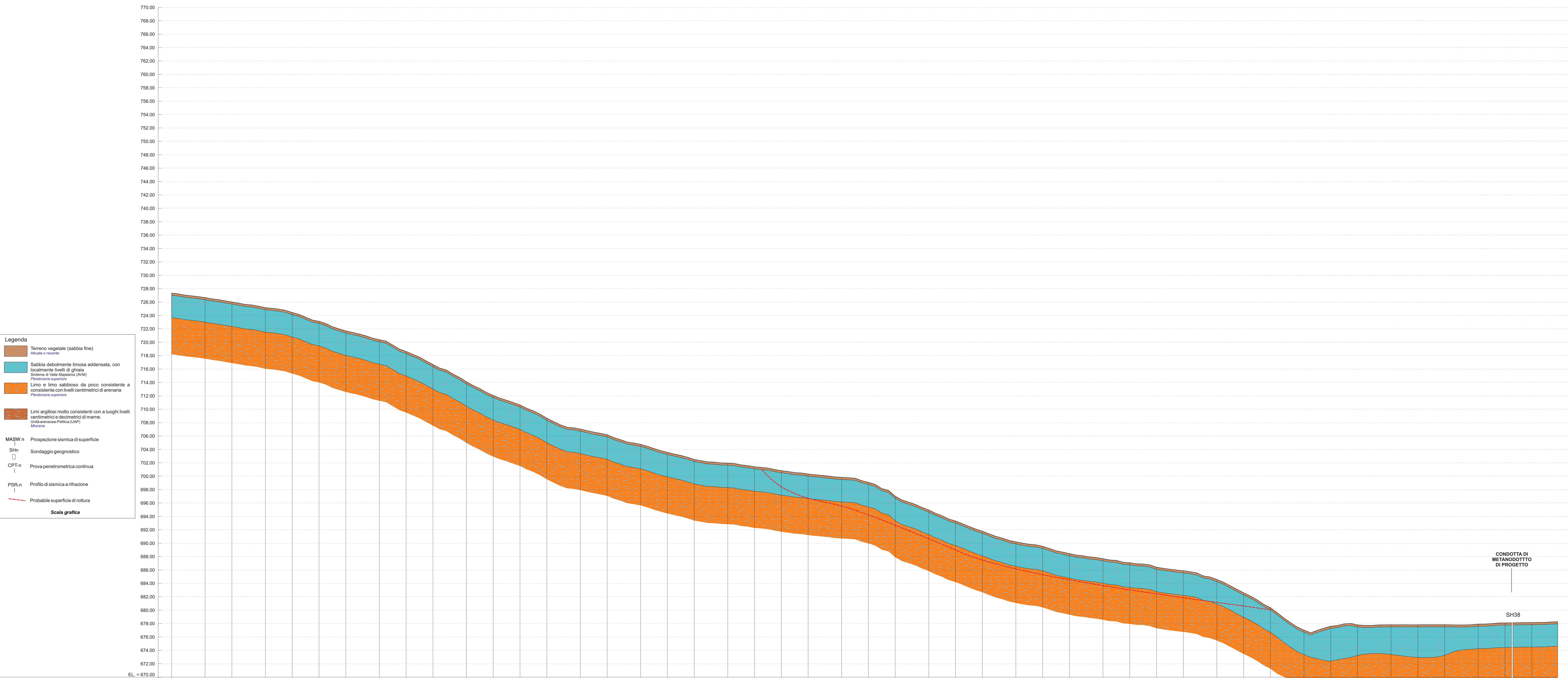


BASE TOPO_LIMITE FRANA_25



BASE TOPO_TIPO FRANA_25





Legenda

- Terreno vegetale (sabbia fine)
Attuale o recente
- Sabbia debolmente limosa addensata, con localmente livelli di ghiaia
Sistema di Valle Magelana (AVM) Pleistocene superiore
- Limo e limo sabbioso da poco consistente a consistente con livelli centimetrici di arenaria
Pleistocene superiore
- Limi argillosi molto consistenti con a luoghi livelli centimetrici e decimetrici di marne. Unità arenacea-Pellica (LAP)
Miocene
- MASW n | Prospezione sismica di superficie
- SHn | Sondaggio geognostico
- CPT-n | Prova penetrometrica continua
- PSR-n | Profilo di sismica a rifrazione
- | Probabile superficie di rottura

Scala grafica

LUNGHEZZA (Kilometri)	0.000																																																	
DEVIAZIONI ANGOLARI	P0																																																	
QUOTA TERRENO (m)	727.34	726.67	726.01	725.17	724.44	723.13	721.70	720.39	718.63	716.66	714.11	712.06	710.65	708.67	707.04	706.20	704.77	703.56	702.50	701.96	701.40	700.83	700.33	699.63	699.08	697.02	694.96	693.32	691.79	690.20	689.63	688.45	687.69	687.08	686.41	685.68	684.59	682.59	680.39	677.03	677.60	677.80	677.92	677.81	677.84	677.92	678.10	678.15	678.23	
PARZIALI ORIZZONTALI (m)	5.00	4.00	5.00	4.00	4.00	4.00	5.00	4.00	4.00	5.00	4.00	4.00	4.00	5.00	4.00	5.00	4.00	4.00	5.00	4.00	4.00	4.00	5.00	4.00	4.00	5.00	4.00	4.00	5.00	4.00	4.00	5.00	4.00	4.00	4.00	4.00	5.00	4.00	4.00	5.00	4.00	4.00	5.00	4.00	4.00	5.00	4.00	3.87		
PROGRESSIVE ORIZZONTALI (m)	0.00	5.00	9.00	14.00	18.00	22.00	26.00	31.00	35.00	39.00	44.00	48.00	52.00	56.00	61.00	65.00	70.00	74.00	78.00	83.00	87.00	91.00	95.00	100.00	104.00	108.00	113.47	118.89	123.23	127.51	132.77	136.83	140.98	146.04	150.10	154.18	158.22	163.42	167.89	172.47	178.51	182.75	186.81	191.92	195.62	199.92	204.62	208.63	212.63	216.71
PROGRESSIVE INCLINATE (m)	0.00	5.06	9.10	14.16	18.26	22.46	26.74	31.91	36.32	40.78	46.43	50.93	55.17	59.64	64.96	69.05	74.27	78.45	82.59	87.63	91.68	95.72	99.76	104.78	108.88	113.47	118.89	123.23	127.51	132.77	136.83	140.98	146.04	150.10	154.18	158.22	163.42	167.89	172.47	178.51	182.75	186.81	191.92	195.62	199.92	204.62	208.63	212.63	216.71	